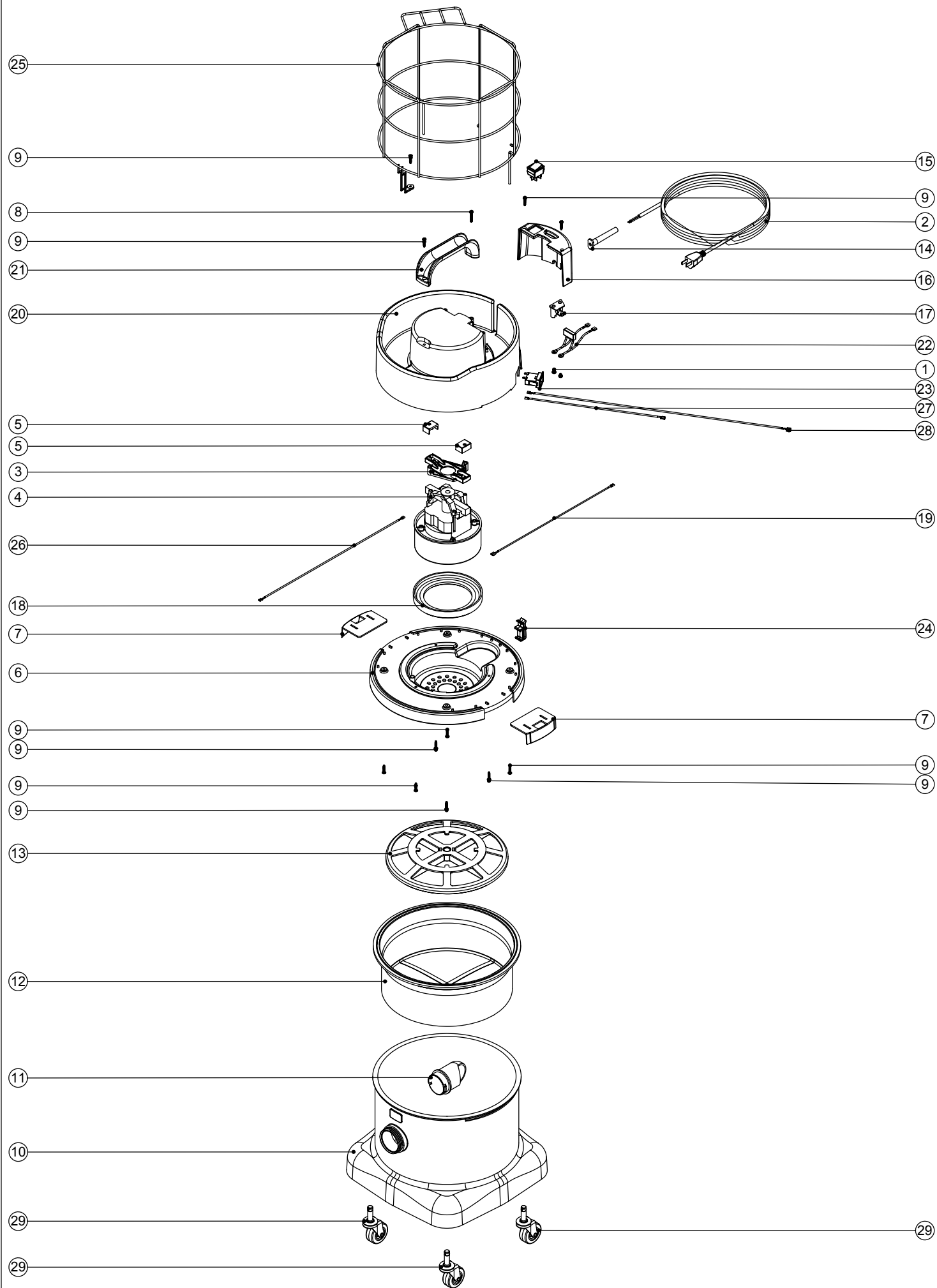


Numatic International Spare Parts

Model No: NVH380-2 (NACE)

234305
DRAWING: EXP-0736 ISS:A01
08/02/2005



Numatic International Spare Parts

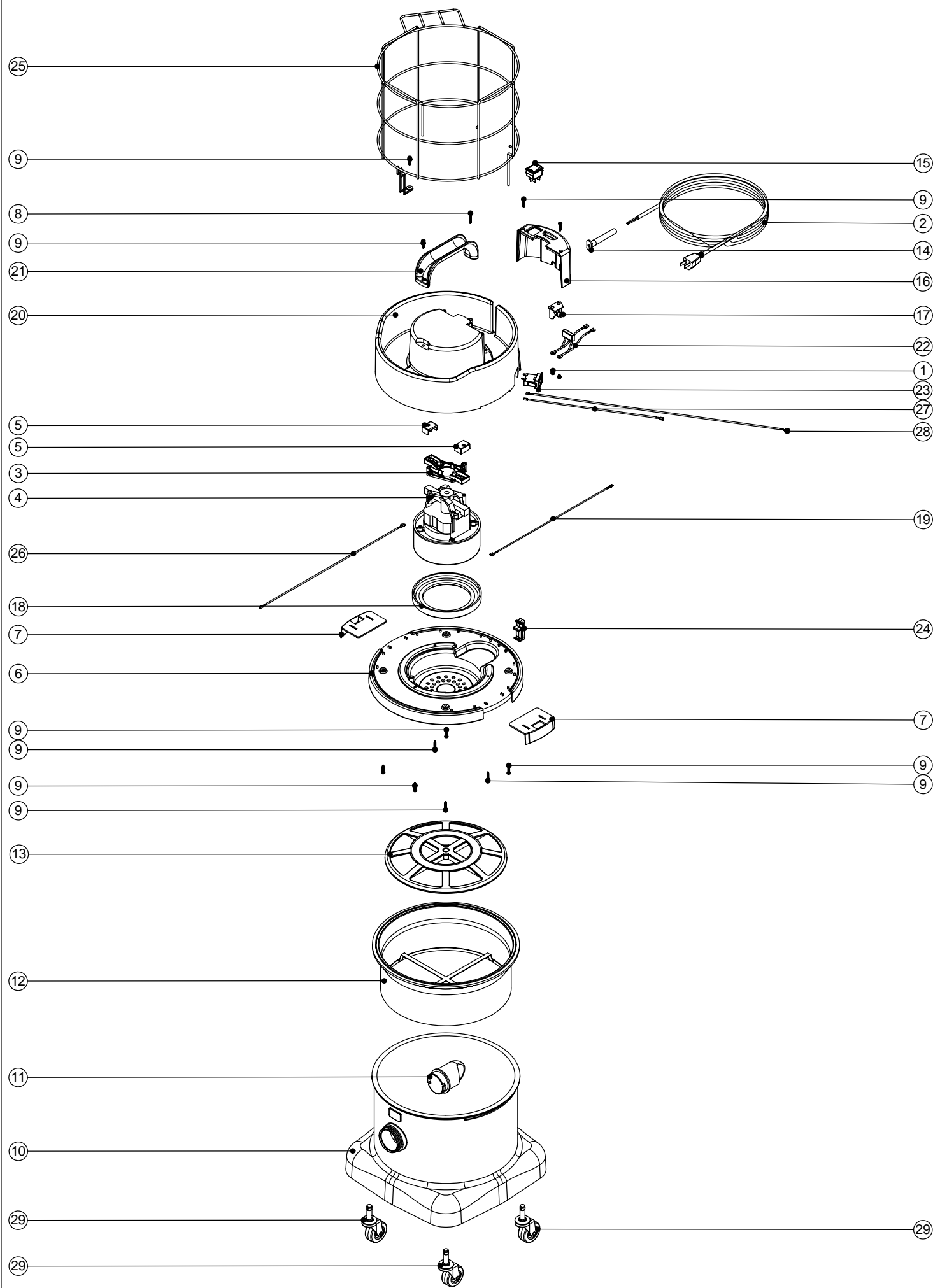
Model No: NVH380-2 (NACE)

POS:	ITEM NO:	DESCRIPTION:	COMMENTS:
1	219090	M4 X 8MM LONG POZI PAN SEMS SCREW	
2	236041	MAINS CABLE (10.0 METRE LONG / 18AWG / 2 CORE / YELLOW CABLE / CSA PLUG)	
3	227881	MOTOR PLATE	
4	205401	120V 2 STAGE THRO FLOW TAPER FAN MOTOR (DL21101T) TCO	
5	227438	RUBBER END PAD	
6	227343	GREY BOTTOM MOTOR HOUSING	
7	227115	TOGGLE	
8	219104	No8 X 1 INCH LONG POZI PAN PLASTITE SCREW	
9	219041	No8 X 3/4 INCH LONG POZI PAN SCREW	
10	225003	RED CONTAINER	
11	227004	BAG CONNECTOR	
12	207109	12 INCH FILTER (DOUBLE BOTTOM) 160GRM SMS	
13	209050	SINGLE FILTER GRID	
14	220923	STRESS RELIEF	
15	220552	RED ROCKER SWITCH	
16	227342	GREY SWITCH BOX	
17	325212	TERMINAL BLOCK + INSERTS	
18	227882	BOTTOM MOTOR GASKET	
19	320296	340MM LONG WHITE LINK WIRE	
20	325494	BLACK TOP MOTOR HOUSING (PROCESSED FOR CAGE & PRINTED WHITE NUMATIC)	
21	206451	HANDLE	
22	220698	SUPPRESSOR ASSEMBLY	
23	220130	PTO SOCKET	
24	229426	HENRY CLIPHOLDER	
25	401377	ROUND TOP WIRE CAGE (PAINTED BLACK)	
26	320335	410MM LONG WHITE LINK WIRE	
27	320697	280MM LONG WHITE LINK WIRE	
28	321110	550MM LONG WHITE LINK WIRE	
29	204059	2 INCH CASTOR	

Numatic International Spare Parts

Model No: NVH380-2 (NACE)

234305
DRAWING: EXP-0736 ISS:A02
12/06/2006



Numatic International Spare Parts

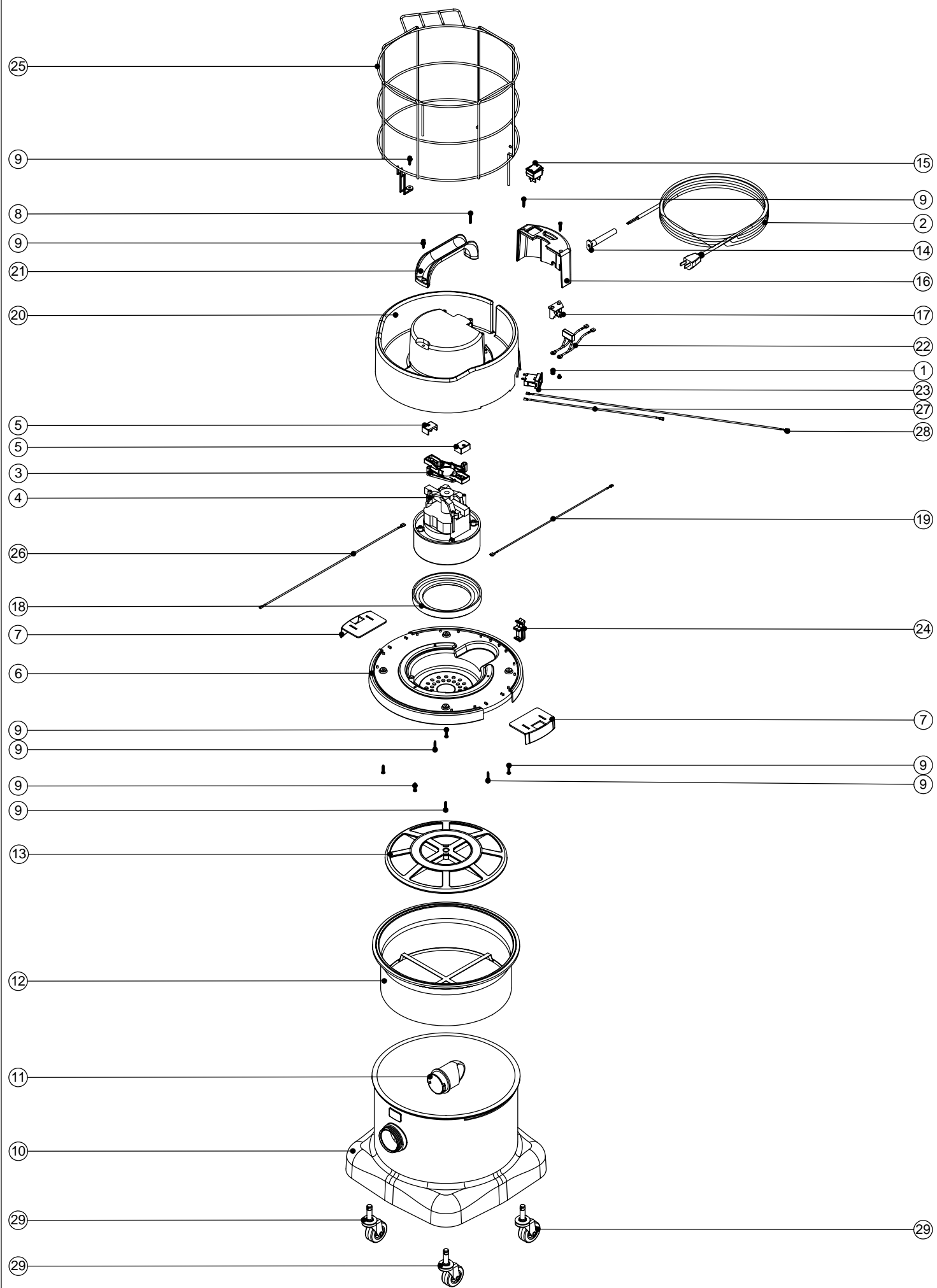
Model No: NVH380-2 (NACE)

POS:	ITEM NO:	DESCRIPTION:	COMMENTS:
1	219090	M4 X 8MM LONG POZI PAN SEMS SCREW	
2	236041	MAINS CABLE (10.0 METRE LONG / 18AWG / 2 CORE / YELLOW CABLE / CSA PLUG)	
3	227881	MOTOR PLATE	
4	205401	120V 2 STAGE THRO FLOW TAPER FAN MOTOR (DL21101T) TCO	
5	227438	RUBBER END PAD	
6	227898	RED BOTTOM MOTOR HOUSING	
7	227115	TOGGLE	
8	219104	No8 X 1 INCH LONG POZI PAN PLASTITE SCREW	
9	219041	No8 X 3/4 INCH LONG POZI PAN SCREW	
10	225003	RED CONTAINER	
11	227004	BAG CONNECTOR	
12	207109	12 INCH FILTER (DOUBLE BOTTOM) 160GRM SMS	
13	209200	12 INCH FILTER GRID	
14	220923	STRESS RELIEF	
15	220552	RED ROCKER SWITCH	
16	227342	GREY SWITCH BOX	
17	325212	TERMINAL BLOCK + INSERTS	
18	227882	BOTTOM MOTOR GASKET	
19	320296	340MM LONG WHITE LINK WIRE	
20	325494	BLACK TOP MOTOR HOUSING (PROCESSED FOR CAGE & PRINTED WHITE NUMATIC)	
21	206451	HANDLE	
22	220698	SUPPRESSOR ASSEMBLY	
23	220130	PTO SOCKET	
24	229426	HENRY CLIPHOLDER	
25	401377	ROUND TOP WIRE CAGE (PAINTED BLACK)	
26	320335	410MM LONG WHITE LINK WIRE	
27	320697	280MM LONG WHITE LINK WIRE	
28	321110	550MM LONG WHITE LINK WIRE	
29	204059	2 INCH CASTOR	

Numatic International Spare Parts

Model No: NVH380-2 (NACE)

234305
DRAWING: EXP-0736 ISS:A03
14/08/2007



Numatic International Spare Parts

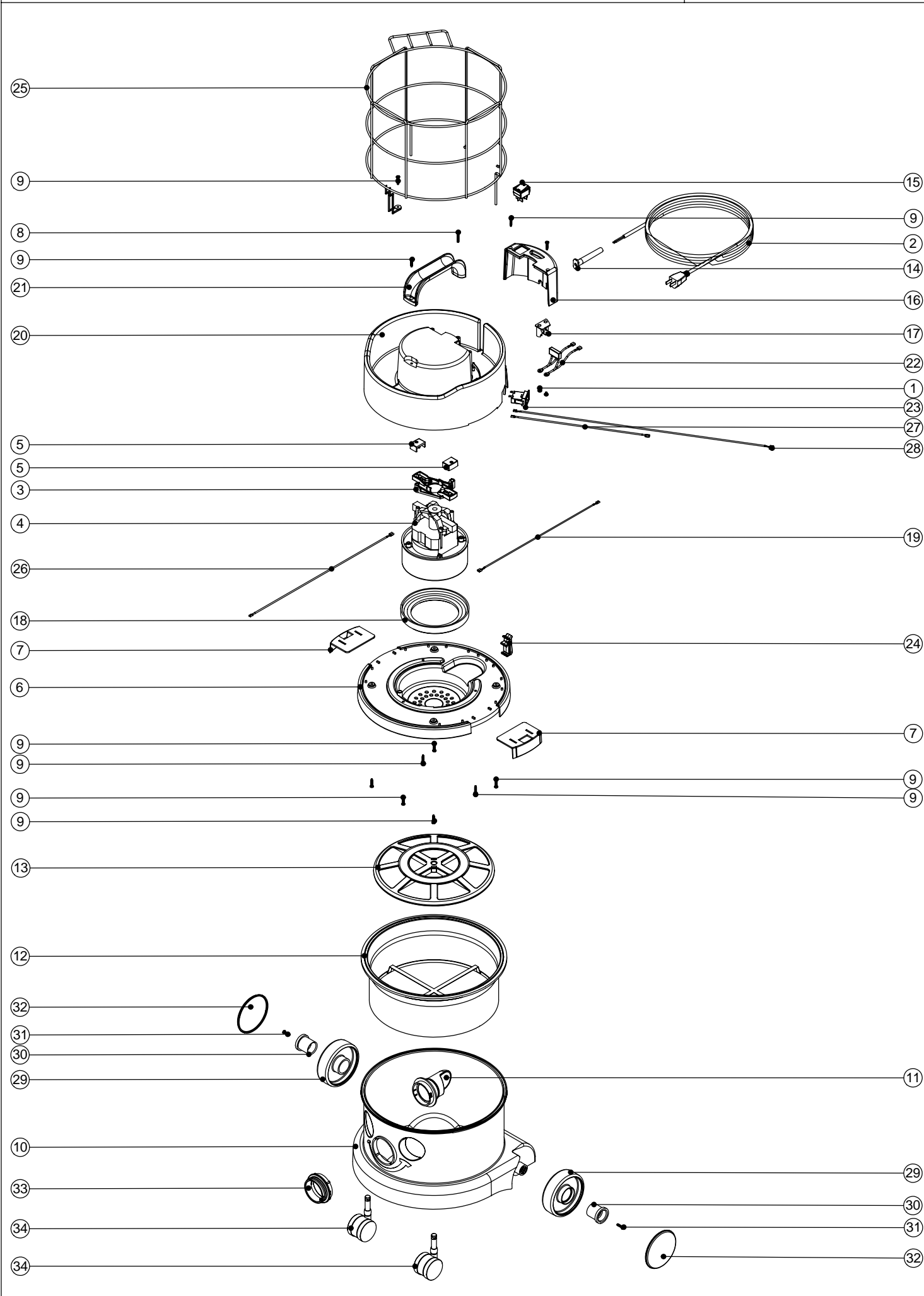
Model No: NVH380-2 (NACE)

POS:	ITEM NO:	DESCRIPTION:	COMMENTS:
1	219090	M4 X 8MM LONG POZI PAN SEMS SCREW	
2	236041	MAINS CABLE (10.0 METRE LONG / 18AWG / 2 CORE / YELLOW CABLE / CSA PLUG)	
3	227881	MOTOR PLATE	
4	205401	120V 2 STAGE THRO FLOW TAPER FAN MOTOR (DL21101T) TCO	
5	227438	RUBBER END PAD	
6	227898	RED BOTTOM MOTOR HOUSING	
7	227115	TOGGLE	
8	219104	No8 X 1 INCH LONG POZI PAN PLASTITE SCREW	
9	219041	No8 X 3/4 INCH LONG POZI PAN SCREW	
10	225003	RED CONTAINER	
11	227004	BAG CONNECTOR	
12	207109	12 INCH FILTER (DOUBLE BOTTOM) 160GRM SMS	INCLUDES ITEM 13 (209200)
13	209200	12 INCH FILTER GRID	
14	220923	STRESS RELIEF	
15	220552	RED ROCKER SWITCH	
16	227342	GREY SWITCH BOX	
17	325212	TERMINAL BLOCK + INSERTS	
18	227882	BOTTOM MOTOR GASKET	
19	320296	340MM LONG WHITE LINK WIRE	
20	325494	BLACK TOP MOTOR HOUSING (PROCESSED FOR CAGE & PRINTED WHITE NUMATIC)	
21	206451	HANDLE	
22	220698	SUPPRESSOR ASSEMBLY	
23	220130	PTO SOCKET	
24	229426	HENRY CLIPHOLDER	
25	401377	ROUND TOP WIRE CAGE (PAINTED BLACK)	
26	320335	410MM LONG WHITE LINK WIRE	
27	320697	280MM LONG WHITE LINK WIRE	
28	321110	550MM LONG WHITE LINK WIRE	
29	204059	2 INCH CASTOR	

Numatic International Spare Parts

Model No: NVH200-2 (NACE)

234307
DRAWING: EXP-0738 ISS:A02
12/06/2006



Numatic International Spare Parts

Model No: NVH200-2 (NACE)

POS:	ITEM NO:	DESCRIPTION:	COMMENTS:
1	219090	M4 X 8MM LONG POZI PAN SEMS SCREW	
2	236041	MAINS CABLE (10.0 METRE LONG / 18AWG / 2 CORE / YELLOW CABLE / CSA PLUG)	
3	227881	MOTOR PLATE	
4	205401	120V 2 STAGE THRO FLOW TAPER FAN MOTOR (DL21101T) TCO	
5	227438	RUBBER END PAD	
6	227898	RED BOTTOM MOTOR HOUSING	
7	227115	TOGGLE	
8	219104	No8 X 1 INCH LONG POZI PAN PLASTITE SCREW	
9	219041	No8 X 3/4 INCH LONG POZI PAN SCREW	
10	225191	RED MOULDED DRUM PLUS FACE	
11	227363	BAG CONNECTOR	
12	207109	12 INCH FILTER (DOUBLE BOTTOM) 160GRM SMS	
13	209200	12 INCH FILTER GRID	
14	220923	STRESS RELIEF	
15	220552	RED ROCKER SWITCH	
16	227342	GREY SWITCH BOX	
17	325212	TERMINAL BLOCK + INSERTS	
18	227882	BOTTOM MOTOR GASKET	
19	320296	340MM LONG WHITE LINK WIRE	
20	325494	BLACK TOP MOTOR HOUSING (PROCESSED FOR CAGE & PRINTED WHITE NUMATIC)	
21	206451	HANDLE	
22	220698	SUPPRESSOR ASSEMBLY	
23	220130	PTO SOCKET	
24	229426	HENRY CLIPHOLDER	
25	401377	ROUND TOP WIRE CAGE (PAINTED BLACK)	
26	320335	410MM LONG WHITE LINK WIRE	
27	320697	280MM LONG WHITE LINK WIRE	
28	321110	550MM LONG WHITE LINK WIRE	
29	227640	2 SHOT WHEEL ASSEMBLY	
30	227868	WHEEL HUB FOR 2 SHOT WHEEL	
31	219105	No8 X 5/8 INCH LONG POZI PAN PLASTITE SCREW	
32	227638	BLACK PLAIN TRIM	
33	227396	RED THREADED NECK	
34	204111	50MM TWIN WHEEL CASTOR WITH PU TYRE	

