

INSTALLATION INTRODUCTION

Installation Tips



For 2017-2020 Model 3 & 2020 Model Y



For 2021+ Model 3 & Model Y

Differences of accessories between 2017-2020 models of Model 3 and 2021+ models of Model3/Y. Please identify the parts suitable for your Tesla before installation.

Note: After The Final Installation is completed, please hold the TWO wheels of the steering wheel with both hands and press for 20 seconds to start the screen.



1 Tilt Down The Panel With A Rocker



2 Remove Plug Of Temperature Sensor



3 Remove the two screws of the original car with the No. 10 wrench



4 Take Out The Screen



5 Remove The Two Screws With T27. And Put The Original Car's Removal Of Screen Cover



6 Remove The White Clip First And Then Pull The Plug In Sequence



7 Put In The Rotating Bracket



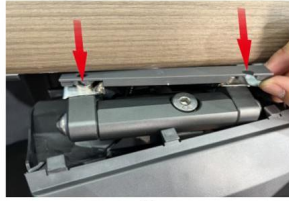
8 Fasten With Two Screws Removed From The Original Car



9 Thread The Link Line Through The Cover



10 Install The Upper Cover Trim Panel (the Bracket Has Been Rotated By 40 And Can Be Directly Installed)



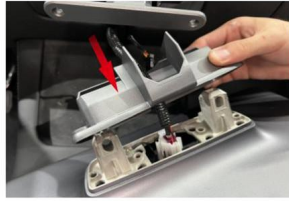
11 Put In The Fastening Strip And Pay Attention To The Pair Of Two Holes, Two Screw Holes (the Fastening Strips Are Misaligned, Coverage Is Lax)



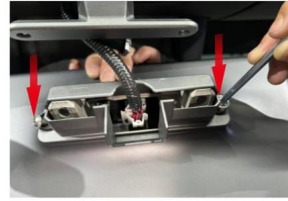
12 Snap The Cover Into Place (be Careful Not To Drop The Fastening Strip)



13 Take Out The Screen And Insert The Line. Then The White Clip Gets Stuck.



14 Fasten The Cover



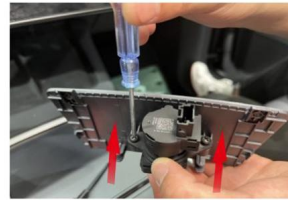
15 Secure The Cover With Two Original Screws T27



16 Put A Good Cover And Screen On The Bracket.



17 Use Two Matching Hexagon Socket Screws. Fixed Large Screen
請用白色螺絲
固定大螢幕
請用白色螺絲
固定大螢幕



18 Remove The Two Screws Of The Original Car Temperature Sensor



19 Lock The Removed Temperature Sensor Into The Matching Heat Dissipation Plate And Fasten It With M4 Screw



20 Plug In The Installed Temperature Sensor



21 Clip The Installed Sensor Into The Cover