

RENLICON FIRE PIT

Part: 000-RN-17282

Instruction Sheet-949



1445 Fortress Street, Chico CA 95973 • (530) 893-5244
www.Renlicon.com

FOREWORD

Thank you for purchasing our Renlicon Fire Pit. Please read the following information carefully before starting assembly.

This instruction sheet provides the necessary information for the assembly of the Renlicon Fire Pit. If you find something we missed or require any additional information, please feel free to contact our Customer Service team at (530) 893-5244.

NOTICE

This product is protected by state common law, copyright and/or patent. All legal rights therein are reserved. The design, layout, dimensions, geometry, and engineering features shown in this product are the exclusive property of Renlicon. This product may not be copied or duplicated in whole or part, abstractly or fundamentally, intentionally, or fortuitously, nor shall any design, dimension, or other information be incorporated into any product or apparatus without prior written consent of Renlicon.

TABLE OF CONTENTS

Contents

FOREWORD..... 2

NOTICE..... 2

TABLE OF CONTENTS 2

SAFETY NOTES 3

TOOLS & SUPPLIES REQUIREMENTS 3

PARTS LIST/DIAGRAM 4

ASSEMBLY INSTRUCTIONS 5

 TRANSPORT HANDLE 5

 ASSEMBLY 6

 ACCESSORIES COMING SOON 7



1445 Fortress Street, Chico CA 95973 • (530) 893-5244
www.Renlicon.com

SAFETY NOTES

Please read assembly instructions and safety notes before using your Renlicon Fire Pit.

- Never use indoors.
- Do not move fire pit once fire is lit.
- Wait an adequate amount of time for fire pit to cool down before disassembling and transporting.



**CAUTION: FIRE PIT PANELS
WILL BE HOT ONCE FIRE IS
LIT**



**CAUTION: DO NOT MOVE
PANEL ONCE FIRE IS LIT**

PLEASE READ THE FOLLOWING PROCEDURES CAREFULLY BEFORE STARTING THE INSTALLATION.

TOOLS & SUPPLIES REQUIREMENTS

Before starting the assembly process, review all assembly instructions. If you have any questions, please contact Renlicon Customer Service at (530) 893-5244.

Tool List:

- Gloves (recommended for assembly)

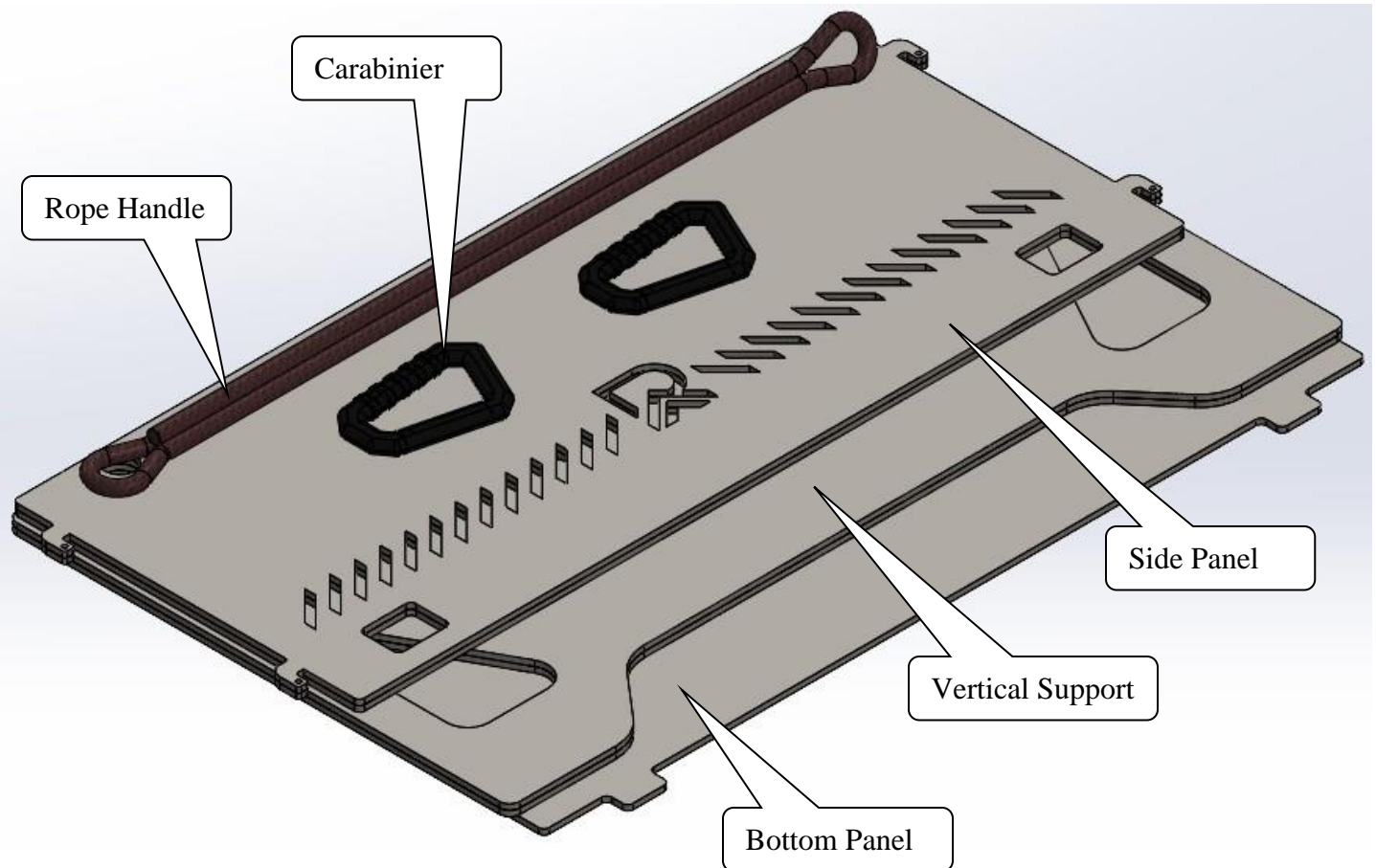


1445 Fortress Street, Chico CA 95973 • (530) 893-5244
www.Renlicon.com

IS-949

PARTS LIST/DIAGRAM

Before beginning assembly, verify all parts listed below are included in the installation kit. If there are any missing or damaged parts, please contact Renlicon at (530) 893-5244.



Parts List:

- A. Vertical Support Panel - (2x)
- B. Side Panel - (2x)
- C. Bottom Panel
- D. Carabinier - (2x)
- E. Rope handle



1445 Fortress Street, Chico CA 95973 • (530) 893-5244
www.Renlicon.com

IS-949

ASSEMBLY INSTRUCTIONS

Transport Handle

To use the carabiner and rope, simply attach the two carabiniers to the rope. The best way to attach the rope assembly to the pit is to stack the parts lining up the large holes at the top of each panel as seen below. The best order to stack is with the bottom plate first, then the two vertical side panels, then the two side panels.

Note: You may find it easier to not connect the vertical side panels and carry them separately.

The supplied rope handle is to **only be used for transport** of the the Renlicon Fire Pit. The materials of the handle are not fire resisant so be sure to remove handle from fire pit area before fire is lit.

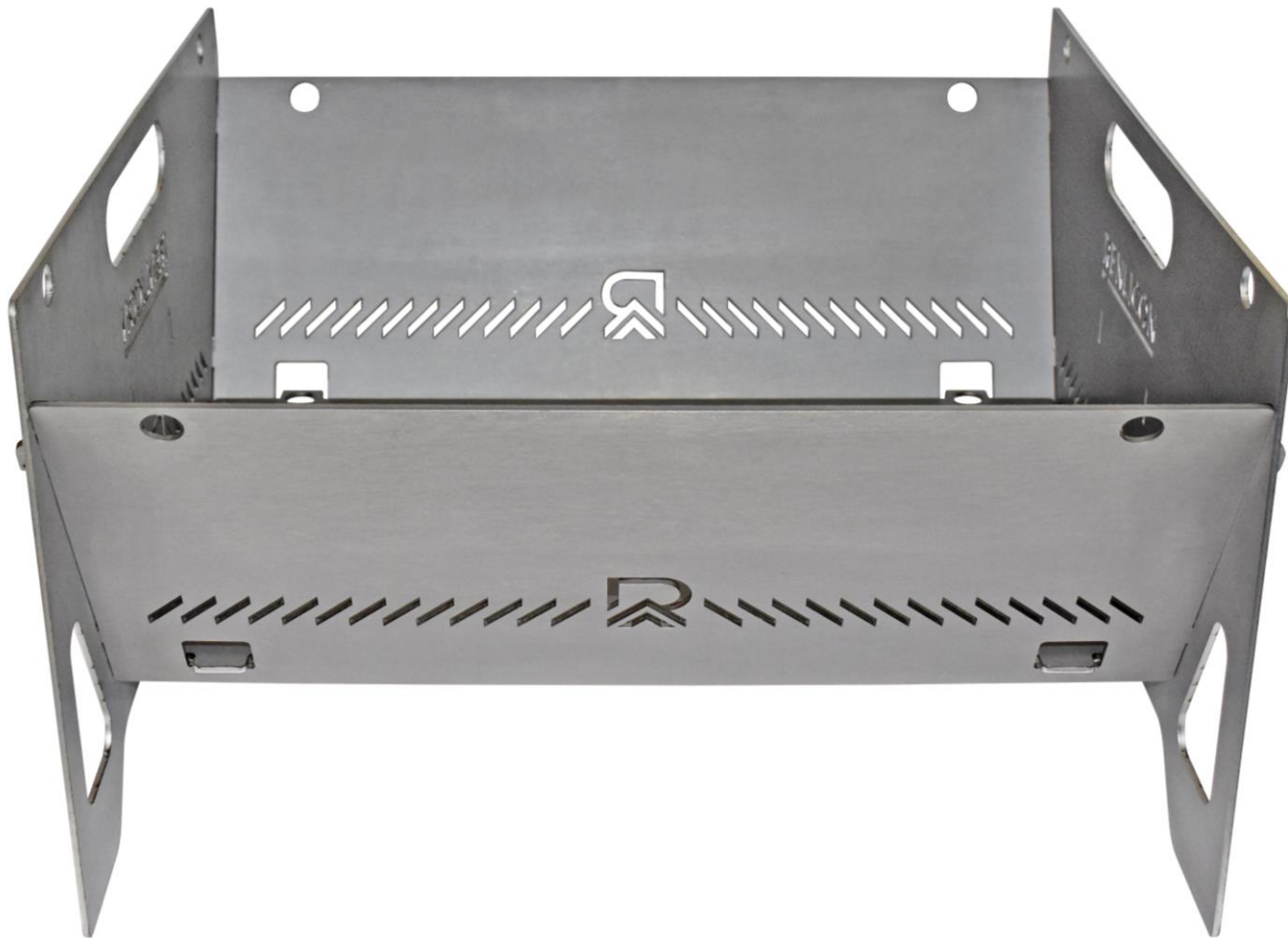


1445 Fortress Street, Chico CA 95973 • (530) 893-5244
www.Renlicon.com

IS-949

Assembly

1. Start with one vertical panel and attach both of the side panels
2. Attach the second vertical panel
3. Finish by placing the bottom panel inside the pit.



1445 Fortress Street, Chico CA 95973 • (530) 893-5244
www.Renlicon.com

IS-949

Accessories Coming Soon

- Grill plate
- Griddle plate
- Dutchoven Pot Hanger
- Fire Stoker
- Fire Starter

For any suggestions on what you would like to see:

Send us an email at info@renlicon.com

or call us at (530) 893-5244



1445 Fortress Street, Chico CA 95973 • (530) 893-5244
www.Renlicon.com