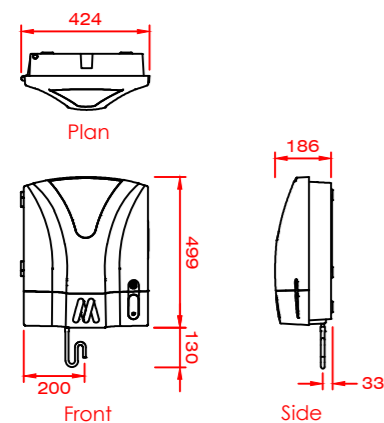


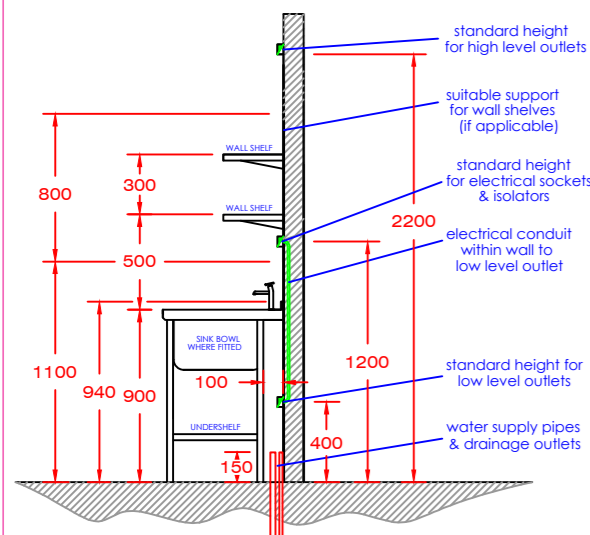


MECHLINE GREASEPAK DMI

Wall mounted GreasePaK (battery operated) drain maintenance units are shown in the best perceived location at the time of drawing. The final position may alter during installation. The ideal location is where the main drains exit the kitchen, this is to ensure optimum performance of each unit. Recommended working height is 1200-1500mm AFFL.



PROPOSED SERVICES TERMINATION DETAILS

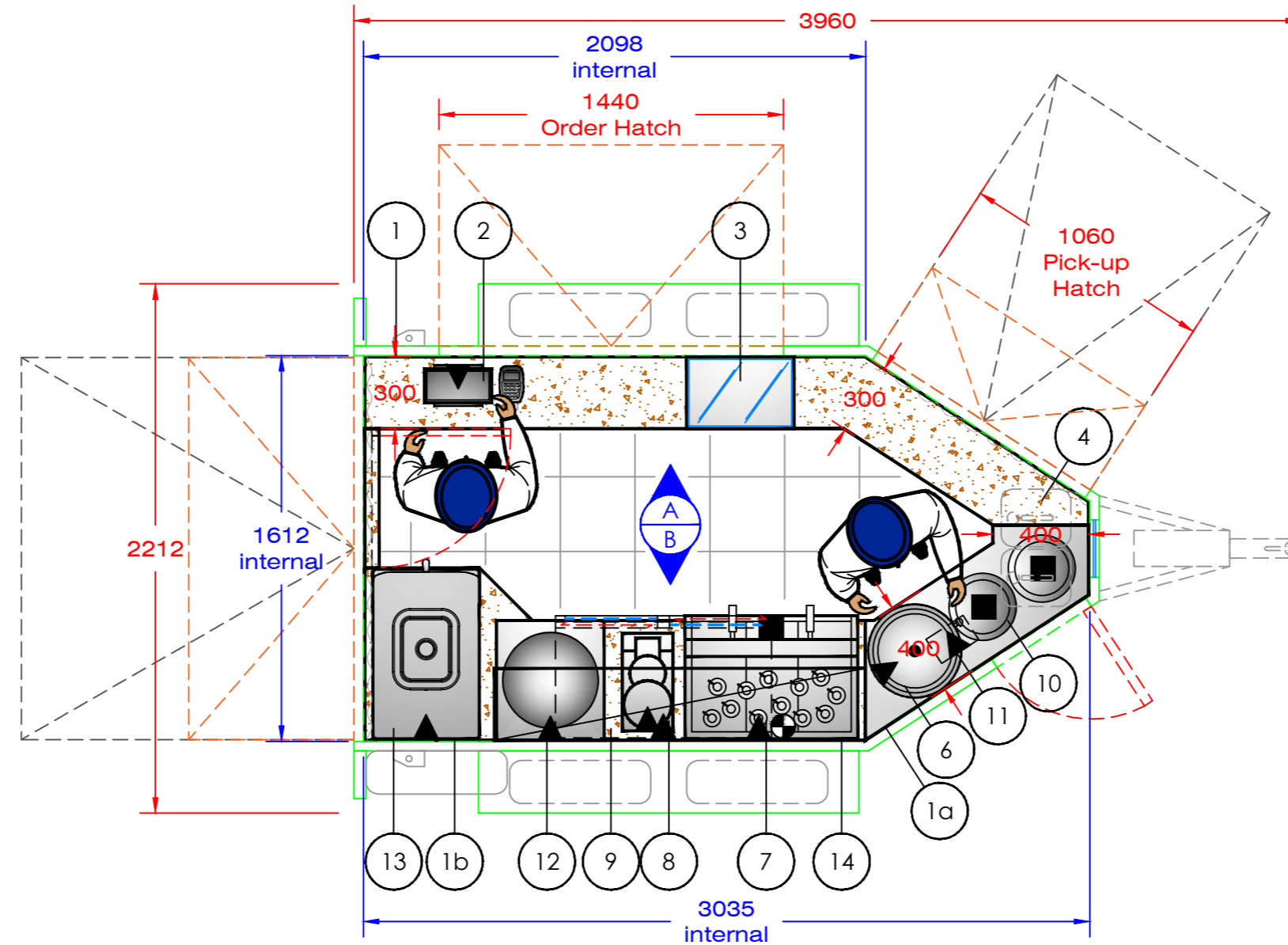


Typical Cross Section For Information Only

PLEASE NOTE

Service connection points & details shown on this layout are for equipment of our supply only. The information shown is for interpretation by the M&E consultants to enable the preparation of their design drawings. Drawing to be approved by the architect in conjunction with current building regulations. Remote refrigeration pipework runs (if applicable) are to be agreed on site. Unless stated, it is assumed that all mechanical services will rise from below. Additional services may be required ie. sockets & drainage etc. The Client must consult the gas supplier to advise on, & ensure, adequate, permanent & unobstructed input ventilation is available to allow the gas appliances on this drawing to operate safely & effectively & comply with GAS SAFE regulations. Extraction is to be fitted with a gas interlock system to comply with GAS SAFE regulations. NB: Gas equipment must be operated under an extraction canopy & interlocked to the gas supply.

Service details are subject to change until the layout & equipment have been agreed with the Client & the drawing has been marked as 'CUSTOMER APPROVED'



PLEASE NOTE
No dimensions to be scaled from this drawing. All dimensions to be checked on site.

SCHEDULE OF EQUIPMENT

No	Qty	Description
1	1	Wooden worktop c/w flap & gate section, voids for items 4 & 9
1a	1	SCE stainless steel worktop section c/w cut-outs for items 10
1b	1	Wooden stand to support item 13
2	1	Till & card reader
3	1	3 tier perspex display
4	2	5 gallon water tanks
5		Omitted
6	1	Burco CE705 electric 20 litre water boiler
7	1	Carimali Cento50 2 group coffee machine
8	1	Carimali C64 coffee grinder
9	1	Blizzard LOWBAR2SL u/c sliding double door bottle cooler (840mm H)
10	2	SCE stainless steel 280mm diameter inset wash hand basins
11	1	Water pump
12	1	Rollergrill 400CSE single plate crepe machine
13	1	Taylor C152 Soft serve ice cream machine
14	1	Wooden wall shelf
15		Omitted



Issue	Date	Details	Drm
E	09/06/21	Item 15 omitted.	DC
D	03/06/21	Amended as per manufacturing process.	DC
C	26/04/21	Items 12 & 13 added.	DC
B	14/04/21	Elevations added.	DC
A	29/03/21	Various changes.	DC

Date Of 1st Issue Drawing : 15 / 03 / 21

AMENDMENTS



205 Canalbanagh Road, Broughshane, Ballymena, Co. Antrim BT42 4NY

T: 028 25861711 E: dclake@stephens-catering.com
www.stephenscateringequipment.com

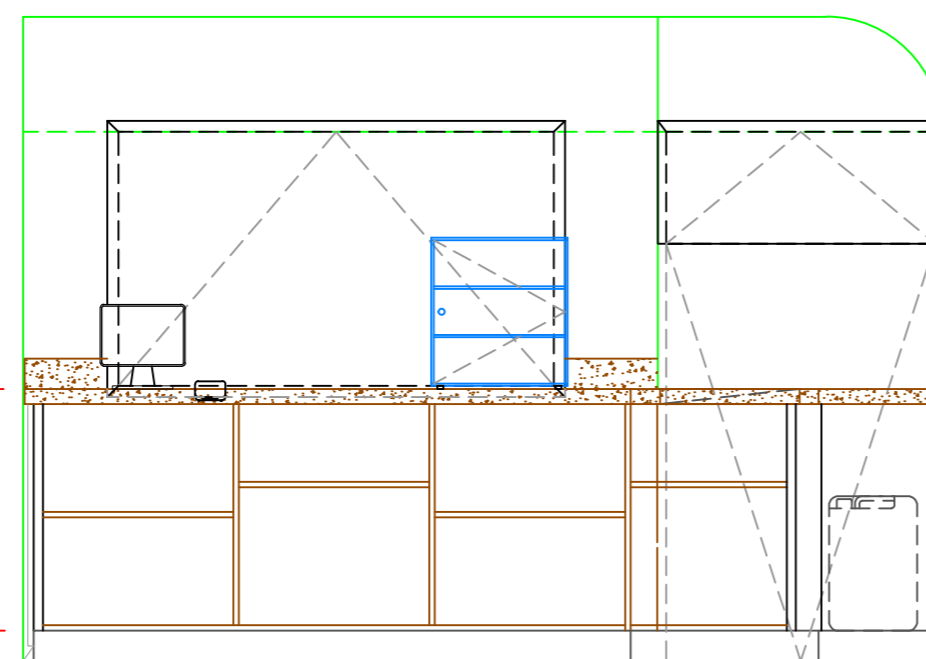
Project

Scale	1 / 25 @ A2	Issue	E
Date	09 / 06 / 21	Drm	DC
Drawing No	DC21H2.2		

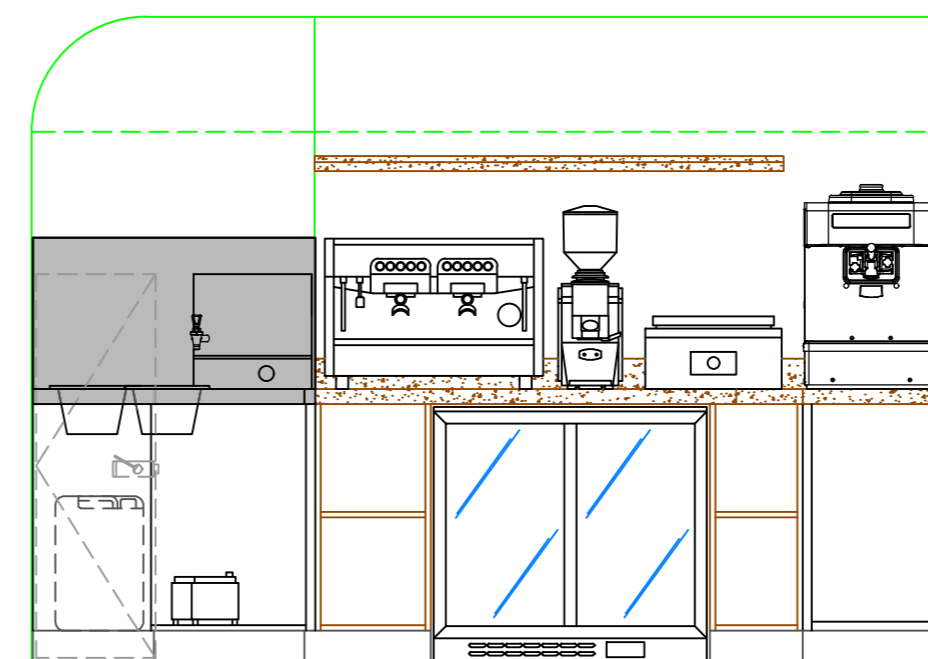
KEY OF SYMBOLS

● Hot water connection	⊕ Mains water connection
○ Cold water connection	▲ Electrical connection
■ Waste connection	⊙ Gas connection

COPYRIGHT © SCE / AUTOCAD
This layout is the property of Stephens Catering Co Ltd & must NOT be reproduced in whole or in part without the written consent of same.



ELEVATION A



ELEVATION B

Ground level to internal floor level: 395mm
Internal height: 2130mm
Internal wall panels: 1240mm high x 40mm thick
Total overall height: 2545mm

All internal dimensions from wall panel to wall panel (40mm thick, each side) rather than external wall to external wall

FOR APPROVAL
This Drawing Is NOT For Manufacture
Approved By
Date