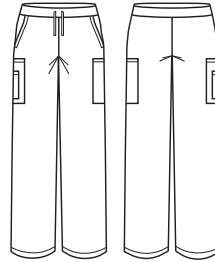




## AVERY MENS SCRUB PANT

CSP946ML



### COLOURS



### GARMENT MEASUREMENTS

SIZE	XS	S	M	L	XL	2XL	3XL	4XL	5XL
½ WAIST RELAXED (CM)	35.5	38.5	41.5	44.5	48.5	52.5	56.5	60.5	64.5
½ WAIST STRETCHED (CM)	43	46	49	52	56	60	64	68	72
IN LEG (CM)	80.5	80.5	80.5	80.5	80.5	80.5	80.5	80.5	80.5

### STYLE F&B

- 2 side front pockets, and 3 cargo style pockets (no back pockets)
- Cargo pockets only have a back gusset, front has been stitched down for a clean, corporate look
- Large pocket can fit iPad mini (pending cover thickness)
- Utility loops on RHS cargo pocket - no bungee cord on pants
- Straight leg shape
- Elastic waist and draw string closure
- 2.5cm hem allowance

### FABRIC COMPOSITION

- 96% Polyester 4% Elastane, with wicking finish
- Easy-care, wash and wear performance fabric for the most demanding of environments
- Suitable for warmer climates
- Excellent Fade Resistance means 'blacks stay black' and colours stay vibrant for longer
- Soft against the skin - camisoles/t-shirts underneath is not required

### CARE DETAILS

- Machine washable at 60°C with like colours, inside out - to hold vibrancy of colours. Do not bleach, do not tumble dry. Cool iron if required, dry cleanable. Quick drying.

### MATCH WITH

- Match back with men's scrub top - CST945MS
- Mix and match colours in bottoms and tops for a unique look

