

# CAT A Fabric

## Specifications

**Composition** 70% Recycled Wool, 25% Recycled Polyacryl,  
5% Recycled Other Fabrics

**Weight** 405 g/m<sup>2</sup> | 11.94 oz/yd<sup>2</sup>

**Width** 148 cm | 58.27"

**Thickness** 0,8 mm | 0.031 inch

**Abrasion resistance** 40.000 Martindale, 50.000 Wyzenbeek

**Flammability** EU: EN 1021.1/2006 | BS EN 1021.1/2006 (cigarette)  
EN 1021.2/2006 | BS EN 1021.2/2006 (match)

USA: CAL TB 117 | ASTM E84 CLASS A

**Fastness to light** EU: 4 | USA: 4

**Fastness to rubbing** EU: Wet 3-4 | Dry 4-5

**Fastness to crocking** USA: Wet 5 | Dry 5



## Maintenance

Vacuum clean regularly. Don't wash. Don't remove the Fabric from the product.

Treat spillages immediately. Professional dry clean or wipe clean with a pH neutral soap and a damp cloth.

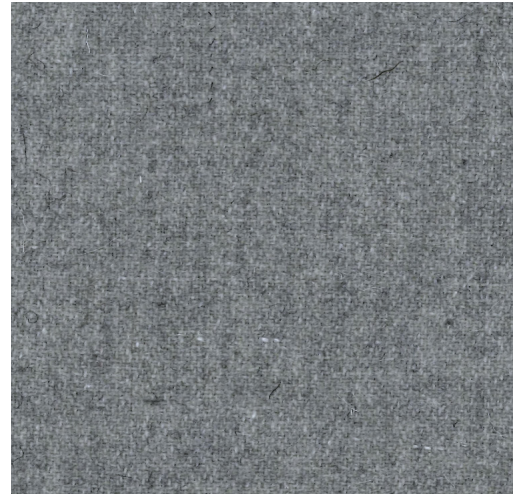


# CAT A Fabric

NO BOUNDARIES



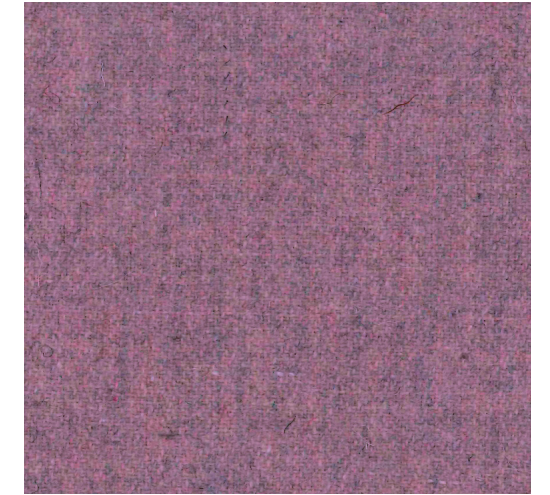
**Fabric**



FA-LightGrey 1000



FA-Kiesel 7



**Fabric**

FA-Pink 73



FA-Ivory 101



FA-Naturel 1



FA-Beige 1037



FA-Dolphin 180



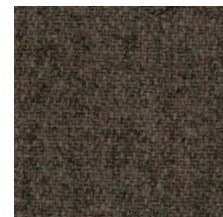
FA-Shitake 124



FA-DarkBrown 18



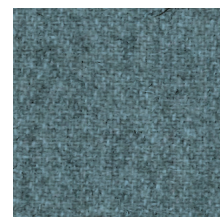
FA-Rust 29



FA-Taupe 1008



FA-Mint 50



FA-Azure 144



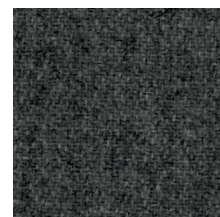
FA-Olive 53



FA-Army 14



FA-Zwart 1003



FA-MidGrey 1001



FA-Blue 45



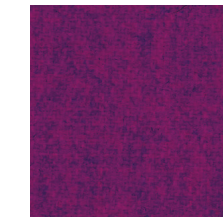
FA-Petrol 56



FA-Purple 78



FA-Aubergine 74



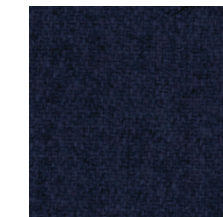
FA-Prune 76



FA-Fuchsia 77



FA-Violet 72



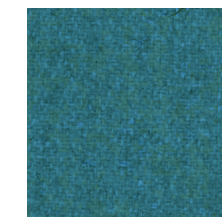
FA-Navy 1007



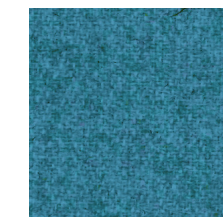
FA-Indigo 90



FA-LightBlue 41



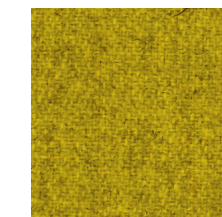
FA-Aqua 143



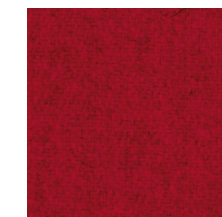
FA-OceanBlue 147



FA-Pistache 52



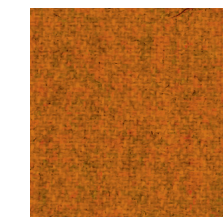
FA-Yellow 24



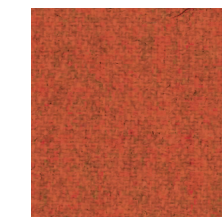
FA-Red 2011



FA-Fire 139



FA-Mandarin 129



FA-Orange 2012