



HALE BOB

LOS ANGELES
Season 9

Let It Shine





**Briar
49ET210A**

Velvet Burnout
(60% silk/40% viscose)
Jersey cami included
(95% viscose/
5% spandex)
Oversized kimono top
with front keyhole

**Fuschia
Navy**

\$148



**Briar
49ET210A**

Velvet Burnout
(60% silk/40% viscose)
Jersey cami included
(95% viscose/
5% spandex)
Oversized kimono top
with front keyhole

**Fuschia
Navy**

\$148



**Briar
49ET210S**

Velvet Burnout
(60% silk/40% viscose)
Jersey cami included
(95% viscose/
5% spandex)
Oversized kimono top
with front keyhole

**Black
Purple
Teal**

\$138



**Briar
49ET210S**

Velvet Burnout
(60% silk/40% viscose)
Jersey cami included
(95% viscose/
5% spandex)
Oversized kimono top
with front keyhole

**Black
Purple
Teal**

\$138



**Briar
49ET210S**

Velvet Burnout
(60% silk/40% viscose)
Jersey cami included
(95% viscose/
5% spandex)
Oversized kimono top
with front keyhole

**Black
Purple
Teal**

\$138



**Mylah
49ET212A**

Washed crepe de chine
(100% silk)
Buttons at front body
Long sleeve
with smocked cuff
Smocked collar
Slim, easy fit.
Hip length
with curved hem

**Fuschia
Navy**

\$148

Mylah
49ET212A

Washed crepe de chine
(100% silk)
Buttons at front body
Long sleeve
with smocked cuff
Smocked collar
Slim, easy fit.
Hip length
with curved hem

Fuschia
Navy

\$148



Bonnie
49ET310A

Wool Blend
Jacquard Sweater
(58% Acrylic/
30% Polyester/
10% wool/2%span)
Shawl collar,
fringe at edges
Wrap body with belt
2 button closure
at front waist
Pockets at hips
Low hip length
(28" HPS)

Fuschia
Navy

\$128



Bonnie
49ET310A

Wool Blend
Jacquard Sweater
(58% Acrylic/
30% Polyester/
10% wool/2%span)
Shawl collar,
fringe at edges
Wrap body with belt
2 button closure
at front waist
Pockets at hips
Low hip length
(28" HPS)

Fuschia
Navy

\$128





**Helena
49ET610A**

Velvet Burnout
(60% silk/40% viscose)
Set in jersey lining at body
(95% viscose/
5% spandex)
Bell sleeve
Pockets at hips
Above the knee length
(35.5" HPS)

\$198

49ET610M

Maxi length
(57" HPS)

\$248

**Fuschia
Navy**



**Helena
49ET610A**

Velvet Burnout
(60% silk/40% viscose)
Set in jersey lining at body
(95% viscose/
5% spandex)
Bell sleeve
Pockets at hips
Above the knee length
(35.5" HPS)

\$198

49ET610M

Maxi length
(57" HPS)

\$248

**Fuschia
Navy**



**Helena
49ET610S**

Velvet Burnout
(60% silk/40% viscose)
Set in jersey lining at body
(95% viscose/
5% spandex)
Bell sleeve
Pockets at hips
Above the knee length
(35.5" HPS)

Teal

\$188



**Sierra
49ET612A**

Washed charmeuse
(54%rayon/46%viscose)
Smocking at waist
Buttons at front, functional
only at the top & hem
Long sleeve
with smocked cuff
Maxi length
(57" HPS)

**Fuschia
Navy**

\$148



**Sierra
49ET612A**

Washed charmeuse
(54%rayon/46%viscose)
Smocking at waist
Buttons at front, functional
only at the top & hem
Long sleeve
with smocked cuff
Maxi length
(57" HPS)

**Fuschia
Navy**

\$148



**Carolina
49ET614A**

Jacquard Sweater
(100% Rayon)
Slim body-con fit
Long sleeve
with flared opening
Buttons at front placket
Maxi length
(54" HPS)

**Fuschia
Navy**

\$128



**Carolina
49ET614A**

Jacquard Sweater
(100% Rayon)
Slim body-con fit
Long sleeve
with flared opening
Buttons at front placket
Maxi length
(54" HPS)

**Fuschia
Navy**

\$128



Adley
49ET616A

Matte jersey
(96% polyester/
4% spandex)
Mesh lining
(92% nylon/8% spandex)
Pleat at CF under placket
Long sleeve
with cuff
Above the knee length
(35.5" HPS)

Fuschia
Navy

\$98



Adley
49ET616A

Matte jersey
(96% polyester/
4% spandex)
Mesh lining
(92% nylon/8% spandex)
Pleat at CF under placket
Long sleeve
with cuff
Above the knee length
(35.5" HPS)

NOTE: NAV colorway will
be deeper in production to
match 49ET612A.

Fuschia
Navy

\$98





**Adley
49ET616D**

Matte jersey
(96% polyester/
4% spandex)
Mesh lining
(92% nylon/8% spandex)
Pleat at CF under placket
Long sleeve
with cuff
Below the knee length
(40" HPS)

**Fuschia
Navy**

\$108

**Adley
49ET616D**

Matte jersey
(96% polyester/
4% spandex)
Mesh lining
(92% nylon/8% spandex)
Pleat at CF under placket
Long sleeve
with cuff
Below the knee length
(40" HPS)

NOTE: NAV colorway will
be deeper in production to
match 49ET612A.

**Fuschia
Navy**

\$108





A woman with long, wavy brown hair is the central figure, wearing a long, flowing dress with a vibrant, repeating pattern of red, orange, and pink floral or leaf-like motifs. She is standing in a lush garden with various green plants, trees, and a brick path. The scene is brightly lit, with a strong sun flare effect behind her. The text 'La Vie En Rouge' is overlaid in a white, serif font on the right side of the image.

La Vie
En Rouge

Salem
49GV222A

Stretch mesh
(92% polyester/
8% spandex)
Adjustable tie at front
Slim fit
3/4 sleeve
with cuff
High hip length

**Floral/Purple
Medallion/Red**

\$68



Salem
49GV222A

Stretch mesh
(92% polyester/
8% spandex)
Adjustable tie at front
Slim fit
3/4 sleeve
with cuff
High hip length

**Floral/Purple
Medallion/Red**

\$68



Mae
49GV620A

Stretch mesh
(92% polyester/
8% spandex)
Faux wrap silhouette
with side zip
Shirred skirt
Long sleeve
with smocked cuff
Above the knee length
(35" HPS)

**Floral/Purple
Medallion/Red**

\$108



Mae
49GV620A

Stretch mesh
(92% polyester/
8% spandex)
Faux wrap silhouette
with side zip
Shirred skirt
Long sleeve
with smocked cuff
Above the knee length
(35" HPS)

**Floral/Purple
Medallion/Red**

\$108



Maci
49GV622A

Washed charmeuse
(100% polyester)
Smocked neckline & waist
Long sleeve
with smocked cuff
Release pleats at skirt
Ankle length
(51" HPS)

**Floral/Purple
Medallion/Red**

\$178



Maci
49GV622A

Washed charmeuse
(100% polyester)
Smocked neckline & waist
Long sleeve
with smocked cuff
Release pleats at skirt
Ankle length
(51" HPS)

**Floral/Purple
Medallion/Red**

\$178







Limited
Edition
Denim

**Blake
ODEN510B**

Stretch denim
LTB/NAV content:
80% cotton/
18% polyester/
2% spandex
BLK/WHT content:
96% cotton/
3% Polyester/1% spandex
High waist (12" rise)
Wide leg with flare
Stitched pin tuck
at front & back
Side pockets at front
Patch pockets at back
33" inseam
with invisible hem
Deep hem
to adjust length

**Black
Light blue wash
Dark blue wash
White**

\$88

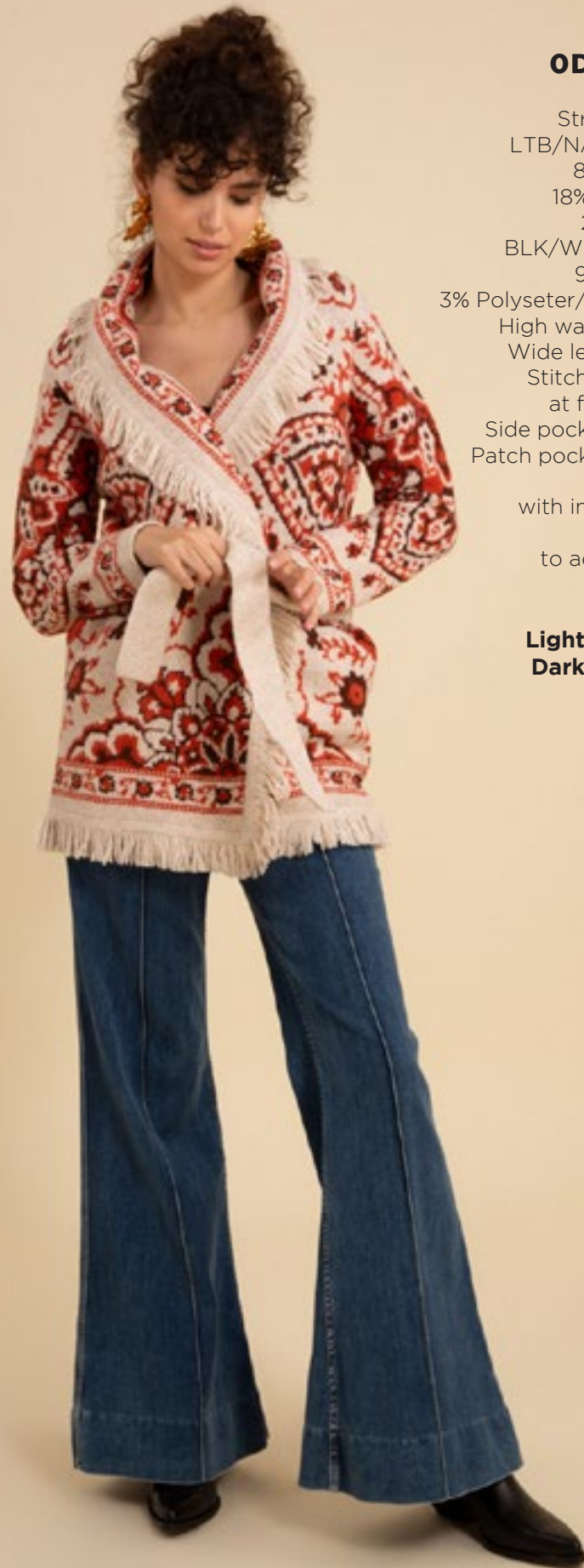


**Blake
ODEN510B**

Stretch denim
LTB/NAV content:
80% cotton/
18% polyester/
2% spandex
BLK/WHT content:
96% cotton/
3% Polyester/1% spandex
High waist (12" rise)
Wide leg with flare
Stitched pin tuck
at front & back
Side pockets at front
Patch pockets at back
33" inseam
with invisible hem
Deep hem
to adjust length

**Black
Light blue wash
Dark blue wash
White**

\$88



**Blake
ODEN510B**

Stretch denim
LTB/NAV content:
80% cotton/
18% polyester/
2% spandex
BLK/WHT content:
96% cotton/
3% Polyester/1% spandex
High waist (12" rise)
Wide leg with flare
Stitched pin tuck
at front & back
Side pockets at front
Patch pockets at back
33" inseam
with invisible hem
Deep hem
to adjust length

**Black
Light blue wash
Dark blue wash
White**

\$88



Blake
ODEN510B

Stretch denim
LTB/NAV content:
80% cotton/
18% polyester/
2% spandex
BLK/WHT content:
96% cotton/
3% Polyester/1% spandex
High waist (12" rise)
Wide leg with flare
Stitched pin tuck
at front & back
Side pockets at front
Patch pockets at back
33" inseam
with invisible hem
Deep hem
to adjust length

Black
Light blue wash
Dark blue wash
White

\$88



Jenna
ODEN512A

Stretch denim
LTB/NAV content:
80% cotton/
18% polyester/2% spandex
BLK/WHT content:
96% cotton/
3% Polyester/1% spandex
High waist (11.5" rise)
Patch pockets
at front & back
Straight leg
with slight flare
33" inseam
with invisible hem
Deep hem
to adjust length

Black
Light blue wash
Dark blue wash
White

\$88





**Jenna
ODEN512A**

Stretch denim
LTB/NAV content:
80% cotton/
18% polyester/2% spandex
BLK/WHT content:
96% cotton/
3% Polyester/1% spandex
High waist (11.5" rise)
Patch pockets
at front & back
Straight leg
with slight flare
33" inseam
with invisible hem
Deep hem
to adjust length

Black
Light blue wash
Dark blue wash
White

\$88



**Jenna
ODEN512A**

Stretch denim
LTB/NAV content:
80% cotton/
18% polyester/2% spandex
BLK/WHT content:
96% cotton/
3% Polyester/1% spandex
High waist (11.5" rise)
Patch pockets
at front & back
Straight leg
with slight flare
33" inseam
with invisible hem
Deep hem
to adjust length

Black
Light blue wash
Dark blue wash
White

\$88



**Jenna
ODEN512A**

Stretch denim
LTB/NAV content:
80% cotton/
18% polyester/2% spandex
BLK/WHT content:
96% cotton/
3% Polyester/1% spandex
High waist (11.5" rise)
Patch pockets
at front & back
Straight leg
with slight flare
33" inseam
with invisible hem
Deep hem
to adjust length

Black
Light blue wash
Dark blue wash
White

\$88

Flight
of
Fancy



**Kinley
49HN230A**

Washed velvet
(80% Rayon/20%Nylon)
Buttons at front keyhole
Smocking & tie at neck
Long sleeve
with elastic & ruffle
Low hip length
with curved hem

**Black
Navy
Purple**

\$88



**Kora
49HN530A**

Washed velvet
(80% Rayon/20%Nylon)
Stretch waistband
Easy palazzo leg
Pockets at hips
High waist
(11" rise)
Full length
(31" Inseam)

**Black
Navy
Purple**

\$88

**Kinley
49HN230A**

Washed velvet
(80% Rayon/20%Nylon)
Buttons at front keyhole
Smocking & tie at neck
Long sleeve
with elastic & ruffle
Low hip length
with curved hem

**Black
Navy
Purple**

\$88



**Kora
49HN530A**

Washed velvet
(80% Rayon/20%Nylon)
Stretch waistband
Easy palazzo leg
Pockets at hips
High waist
(11" rise)
Full length
(31" Inseam)

**Black
Navy
Purple**

\$88



Carter
49HN630A

Washed velvet
(80% Rayon/20%Nylon)
Smocking at waist
Long sleeve
with smocked cuff
Skirt dips at the sides
Above the knee length
(35.5" HPS)

Navy
Purple

\$118



Carter
49HN630A

Washed velvet
(80% Rayon/20%Nylon)
Smocking at waist
Long sleeve
with smocked cuff
Skirt dips at the sides
Above the knee length
(35.5" HPS)

Navy
Purple

\$118



**Meadow
49HN632A**

Washed velvet
(80% Rayon/20%Nylon)
Halter neck with
metal chain necklace
Keyhole at front
& back neck
Tie belt included
Midi length
(47" HPS)

**Navy
Purple**

\$108



**Meadow
49HN632A**

Washed velvet
(80% Rayon/20%Nylon)
Halter neck with
metal chain necklace
Keyhole at front
& back neck
Tie belt included
Midi length
(47" HPS)

**Navy
Purple**

\$108

A woman with long dark hair and a white flower in her hair stands in a lush garden. She is wearing a long, flowing, long-sleeved dress with a vibrant, multi-colored mosaic pattern. The garden is filled with various green plants, including tall grasses and ferns, and a stone lantern is visible in the background. The scene is bathed in soft, natural light.

Mosaic Muse

Wrenley
49MM240A

Washed crepe de chine
(100% silk)
Buttons at front keyhole
Ruffle & smocking at neck
Long sleeve
with smocked cuff
Hip length
with curved hem

**Emerald
Pink**

\$148



Wrenley
49MM240A

Washed crepe de chine
(100% silk)
Buttons at front keyhole
Ruffle & smocking at neck
Long sleeve
with smocked cuff
Hip length
with curved hem

**Emerald
Pink**

\$148



Kyla
49MM242A

Washed twill
(55% viscose/45% rayon)
Buttons at front placket
Long sleeve
with cuff
Hip length
with curved hem

**Emerald
Pink**

\$88



Ryan
49MM540A

Washed twill
(55% viscose/45% rayon)
Stretch waistband
Easy palazzo leg
Pockets at hips
High waist
(11" rise)
Full length
(31" Inseam)

**Emerald
Pink**

\$78

Kyla
49MM242A

Washed twill
(55% viscose/45% rayon)
Buttons at front placket
Long sleeve
with cuff
Hip length
with curved hem

**Emerald
Pink**

\$88



Ryan
49MM540A

Washed twill
(55% viscose/45% rayon)
Stretch waistband
Easy palazzo leg
Pockets at hips
High waist
(11" rise)
Full length
(31" Inseam)

**Emerald
Pink**

\$78



**Heaven
49MM640A**

Matte jersey
(96% polyester/
4% spandex)
Mesh lining
(92% nylon/8% spandex)
Pleat at CF under placket
Pockets at hips
Long sleeve
with cuff
Deep hem added
for length
Above the knee
(35.5" HPS)

**Emerald
Pink**

\$98

**Heaven
49MM640A**

Matte jersey
(96% polyester/
4% spandex)
Mesh lining
(92% nylon/8% spandex)
Pleat at CF under placket
Pockets at hips
Long sleeve
with cuff
Deep hem added
for length
Above the knee
(35.5" HPS)

**Emerald
Pink**

\$98



**Heaven
49MM640D**

Matte jersey
(96% polyester/
4% spandex)
Mesh lining
(92% nylon/8% spandex)
Pleat at CF under placket
Pockets at hips
Long sleeve
with cuff
Deep hem added
for length
Below the knee
(40" HPS)

**Emerald
Pink**

\$108





**Heaven
49MM640D**

Matte jersey
(96% polyester/
4% spandex)
Mesh lining
(92% nylon/8% spandex)
Pleat at CF under placket
Pockets at hips
Long sleeve
with cuff
Deep hem added
for length
Below the knee
(40" HPS)

**Emerald
Pink**

\$108



**Raya
49MM642A**

Washed crepe de chine
(100% Viscose)
Buttons at front neck
Smocking at neck
Long sleeve with
smocked cuff
Ruffle at hem
Above the knee length
(35.5" HPS)

**Emerald
Pink**

\$148



**Raya
49MM642A**

Washed crepe de chine
(100% Viscose)
Buttons at front neck
Smocking at neck
Long sleeve with
smocked cuff
Ruffle at hem
Above the knee length
(35.5" HPS)

**Emerald
Pink**

\$148

**Jennifer
49MM644A**

Washed chiffon
(70% rayon/30% silk)
Jersey lining
(95% viscose/
5% spandex)
Pleating at front bodice
and skirt
Long sleeve with smocked
cuff with ruffle
Maxi length
(57" HPS)

**Emerald
Pink**

\$178



**Jennifer
49MM644A**

Washed chiffon
(70% rayon/30% silk)
Jersey lining
(95% viscose/
5% spandex)
Pleating at front bodice
and skirt
Long sleeve with smocked
cuff with ruffle
Maxi length
(57" HPS)

**Emerald
Pink**

\$178





Gold Standard



Angel
49NL250A

Lurex Knit
(95% viscose/5% lurex)
Lined with jersey
(100% polyester)
Shirring at bust
around placket
Long sleeve
with flared opening
Hip length

Black
Burgundy
Navy

\$88



Edith
49NL550A

Lurex Knit
(95% viscose/5% lurex)
Lined with jersey
(100% polyester)
Elastic at waist
High waist
(9.25" rise)
Slim fit with flared leg
Full length
(32" inseam)

NOTE: The sample is
very small, the
production fit will
be a relaxed
straight fit with
a slight flare

Black
Burgundy
Navy

\$98

Angel
49NL250A

Lurex Knit
(95% viscose/5% lurex)
Lined with jersey
(100% polyester)
Shirring at bust
around placket
Long sleeve
with flared opening
Hip length

Black
Burgundy
Navy

\$88



Edith
49NL550A

Lurex Knit
(95% viscose/5% lurex)
Lined with jersey
(100% polyester)
Elastic at waist
High waist
(9.25" rise)
Slim fit with flared leg
Full length
(32" inseam)

NOTE: The sample is
very small, the
production fit
will be a relaxed
straight fit with
a slight flare

Black
Burgundy
Navy

\$98

Angel
49NL250A

Lurex Knit
(95% viscose/5% lurex)
Lined with jersey
(100% polyester)
Shirring at bust
around placket
Long sleeve
with flared opening
Hip length

Black
Burgundy
Navy

\$88



Edith
49NL550A

Lurex Knit
(95% viscose/5% lurex)
Lined with jersey
(100% polyester)
Elastic at waist
High waist
(9.25" rise)
Slim fit with flared leg
Full length
(32" inseam)

NOTE: The sample is
very small, the
production fit will
be a relaxed
straight fit with
a slight flare

Black
Burgundy
Navy

\$98



**Madelynn
49NL650A**

Lurex Knit
(95% viscose/5% lurex)
Lined with jersey
(100% polyester)
Boat neck
Slim shift fit
Pocket band detail at hip
(not functional)
Sleeve with flared opening
Above the knee length
(35.5" HPS)

**Black
Burgundy
Navy**

\$98



**Madelynn
49NL650A**

Lurex Knit
(95% viscose/5% lurex)
Lined with jersey
(100% polyester)
Boat neck
Slim shift fit
Pocket band detail at hip
(not functional)
Sleeve with flared opening
Above the knee length
(35.5" HPS)

**Black
Burgundy
Navy**

\$98



**Madelynn
49NL650A**

Lurex Knit
(95% viscose/5% lurex)
Lined with jersey
(100% polyester)
Boat neck
Slim shift fit
Pocket band detail at hip
(not functional)
Sleeve with flared opening
Above the knee length
(35.5" HPS)

**Black
Burgundy
Navy**

\$98



Lyra
49NL652A

Lurex Knit
(95% viscose/5% lurex)
Lined with jersey
(100% polyester)
Halter neck with metal
chain necklace
Keyhole at front
& back neck
Slim column fit
Ankle length
(54" HPS)

Black
Navy

\$118



Lyra
49NL652A

Lurex Knit
(95% viscose/5% lurex)
Lined with jersey
(100% polyester)
Halter neck with metal
chain necklace
Keyhole at front
& back neck
Slim column fit
Ankle length
(54" HPS)

Black
Navy

\$118



Stained
Glass
Stunner



**Charleigh
49SU260A**

Velvet Burnout
(60% silk/40% viscose)
Set in jersey lining at body
(95% viscose/
5% spandex)
Buttons at front keyhole.
Hip length.

Green

\$148



**Averie
49SU262A**

Washed crepe de chine
(100% silk)
Button at top of f
ront keyhole
Long sleeve with cuff
Slim, easy fit through body
Hip length
with curved hem

**Green
Purple**

\$128



**Averie
49SU262A**

Washed crepe de chine
(100% silk)
Button at top of f
ront keyhole
Long sleeve with cuff
Slim, easy fit through body
Hip length
with curved hem

**Green
Purple**

\$128

Oaklee
49SU660A

Velvet Burnout
(60% silk/40% viscose)
Set in jersey lining at body
(95% viscose/
5% spandex)
Smocked waistband
Long sleeve
with smocked cuff
Pockets at hips
Tier at hem
Above the knee length
(35.5" HPS)

Green

\$188



Eve
49SU662A

Matte jersey
(96% polyester/
4% spandex)
Mesh lining
(92% nylon/8% spandex)
Tight, body-con fit
Shirring at skirt
Slim sleeve with shirring
Below the knee length
(41" HPS)

Green
Purple

\$108



Eve
49SU662A

Matte jersey
(96% polyester/
4% spandex)
Mesh lining
(92% nylon/8% spandex)
Tight, body-con fit
Shirring at skirt
Slim sleeve with shirring
Below the knee length
(41" HPS)

Green
Purple

\$108





This book is a presentation of a selection of Hale Bob product and is correct at time of publication.

To view the entire collection of products including updates and additions. You can view product line sheets at halebob.com by logging into the "Merchant" section of our website.

Prices and products posted in this book are current at time of publication but are subject to change.

Sales Director

East Coast
South

Sales Executive

Latin America
West Coast

Sales Executive

Southwest
Midwest

Cathy Cooley

310-963-2463
cathy@halebob.com

Isabela Peralta

323-394-1739
isabela@halebob.com

Tracy Holden

214-454-1176
tracy@halebob.com

For Marketing & Press Inquiries:

Marianna Gunther
marianna@halebob.com

HALE BOB
LOS ANGELES

