



HALE BOB

LOS ANGELES

Season 8

Shape Shifter



Mira
48AP210A

Washed crepe de chine
(100% silk)
Slim easy fit
through body
Long sleeve
with smocked cuff
Hip length
with curved hem

Blue

\$148



Elaine
48AP212A

Matte jersey
(96% polyester/
4% spandex)
Oversize voluminous body
3/4 length sleeve
with cuff
Hip length, body dips
at sides

Black
Blue

\$78

Elaine
48AP212A

Matte jersey
(96% polyester/
4% spandex)
Oversize voluminous body
3/4 length sleeve
with cuff
Hip length, body dips
at sides

Black
Blue

\$78



**Jessica
48AP310A**

Wool Blend
Jacquard Sweater
(58% Acrylic/
30% Polyester/
10% wool/2%span)

Oversize fit
Voluminous sleeve
with cuff
High hip length

**Black & White
Lilac**

\$98



**Jessica
48AP310A**

Wool Blend
Jacquard Sweater
(58% Acrylic/
30% Polyester/
10% wool/2%span)

Oversize fit
Voluminous sleeve
with cuff
High hip length

**Black & White
Lilac**

\$98



**Jimena
48AP312A**

Melange boucle cardigan
(10% Wool/
40% Nylon/50% Acrylic)
Easy, slightly oversized fit
Fringe at pocket, wrist,
and hem
Pocket at front is not
functional
Hip length

**Black
Ivory**

\$78

Jimena
48AP312A

Melange boucle cardigan
(10% Wool/
40% Nylon/50% Acrylic)
Easy, slightly oversized fit
Fringe at pocket, wrist,
and hem
Pocket at front is not
functional
Hip length

Black
Ivory

\$78



Haisley
48AP314A

Wool Blend
Jacquard Sweater
(58% Acrylic/
30% Polyester/
10% wool/2%span)
Shawl collar,
fringe at edges
Wrap body with belt
2 button closure
at front waist
Pockets at hips
Low hip length
(28" HPS)

Black & White
Lilac

\$118



**Haisley
48AP314A**

Wool Blend
Jacquard Sweater
(58% Acrylic/
30% Polyester/
10% wool/2%span)
Shawl collar,
fringe at edges
Wrap body with belt
2 button closure
at front waist
Pockets at hips
Low hip length
(28" HPS)

**Black & White
Lilac**

\$118



**Haisley
48AP314M**

Wool Blend
Jacquard Sweater
(58% Acrylic/
30% Polyester/
10% wool/2%span)
Shawl collar,
fringe at edges
Wrap body with belt
2 button closure
at front waist
Pockets at hips
Midi length
(48" HPS)

Black & White

\$148



**Reyna
48AP410A**

Washed charmeuse
(25% silk/75%viscose)
Zipper at back
with smocked panel
Buttons at front skirt
functional only at
lower skirt
Pockets at hips
Self belt included
Ankle length
(33 3/4" HPS)

Blue

\$128



Ari
48AP610A

Matte jersey
(96% polyester/
4% spandex)
Keyhole at front neck
Shirring at front &
back body
Slit at center front skirt
Ankle length
(54" HPS)

Black
Blue

\$138



Ari
48AP610A

Matte jersey
(96% polyester/
4% spandex)
Keyhole at front neck
Shirring at front &
back body
Slit at center front skirt
Ankle length
(54" HPS)

Black
Blue

\$138



Cassidy
48AP612A

Matte jersey
(96% polyester/
4% spandex)
Mesh lining
(92% nylon/8% spandex)
Pleat at CF under placket
Pockets at hips
Long sleeve with cuff
Deep hem added
for length
Above the knee
(35.5" HPS)

Black
Blue

\$98



**Cassidy
48AP612A**

Matte jersey
(96% polyester/
4% spandex)
Mesh lining
(92% nylon/8% spandex)
Pleat at CF under placket
Pockets at hips
Long sleeve with cuff
Deep hem added
for length
Above the knee
(35.5" HPS)

**Black
Blue**

\$98



**Cassidy
48AP612D**

Matte jersey
(96% polyester/
4% spandex)
Mesh lining
(92% nylon/8% spandex)
Pleat at CF under placket
Pockets at hips
Long sleeve with cuff
Deep hem added
for length
Below the knee
(40" HPS)

**Black
Blue**

\$108



**Cassidy
48AP612D**

Matte jersey
(96% polyester/
4% spandex)
Mesh lining
(92% nylon/8% spandex)
Pleat at CF under placket
Pockets at hips
Long sleeve with cuff
Deep hem added
for length
Below the knee
(40" HPS)

**Black
Blue**

\$108





Soft Focus



**Amanda
48CF220A**

Washed velvet
(80% Rayon/20%Nylon)
Crochet insert at sleeve
Buttons at front keyhole
Long sleeve
with smocked cuff
Hip length
with curved hem

**Black
Teal
Violet**

\$88



**Amanda
48CF220A**

Washed velvet
(80% Rayon/20%Nylon)
Crochet insert at sleeve
Buttons at front keyhole
Long sleeve
with smocked cuff
Hip length
with curved hem

**Black
Teal
Violet**

\$88



**Amanda
48CF220A**

Washed velvet
(80% Rayon/20%Nylon)
Crochet insert at sleeve
Buttons at front keyhole
Long sleeve
with smocked cuff
Hip length
with curved hem

**Black
Teal
Violet**

\$88





**Alison
48CF620A**

Washed velvet
(80% Rayon/20%Nylon)
Crochet insert at sleeve
Smocked band at waist
Tier at skirt
Above the knee length
(35.5" HPS)

**Black
Teal
Violet**

\$118



**Alison
48CF620A**

Washed velvet
(80% Rayon/20%Nylon)
Crochet insert at sleeve
Smocked band at waist
Tier at skirt
Above the knee length
(35.5" HPS)

**Black
Teal
Violet**

\$118



**Alison
48CF620A**

Washed velvet
(80% Rayon/20%Nylon)
Crochet insert at sleeve
Smocked band at waist
Tier at skirt
Above the knee length
(35.5" HPS)

**Black
Teal
Violet**

\$118





Limited
Edition
Denim



**Blake
ODEN510B**

Stretch denim
LTB/NAV content:
80% cotton/
18% polyester/
2% spandex
BLK/WHT content:
96% cotton/
3% Polyester/1% spandex
High waist (12" rise)
Wide leg with flare
Stitched pin tuck
at front & back
Side pockets at front
Patch pockets at back
33" inseam
with invisible hem
Deep hem
to adjust length

**Black
Light blue wash
Dark blue wash
White**

\$88



**Blake
ODEN510B**

Stretch denim
LTB/NAV content:
80% cotton/
18% polyester/
2% spandex
BLK/WHT content:
96% cotton/
3% Polyester/1% spandex
High waist (12" rise)
Wide leg with flare
Stitched pin tuck
at front & back
Side pockets at front
Patch pockets at back
33" inseam
with invisible hem
Deep hem
to adjust length

**Black
Light blue wash
Dark blue wash
White**

\$88



**Blake
ODEN510B**

Stretch denim
LTB/NAV content:
80% cotton/
18% polyester/
2% spandex
BLK/WHT content:
96% cotton/
3% Polyester/1% spandex
High waist (12" rise)
Wide leg with flare
Stitched pin tuck
at front & back
Side pockets at front
Patch pockets at back
33" inseam
with invisible hem
Deep hem
to adjust length

**Black
Light blue wash
Dark blue wash
White**

\$88

Blake
ODEN510B

Stretch denim
LTB/NAV content:
80% cotton/
18% polyester/
2% spandex
BLK/WHT content:
96% cotton/
3% Polyester/1% spandex
High waist (12" rise)
Wide leg with flare
Stitched pin tuck
at front & back
Side pockets at front
Patch pockets at back
33" inseam
with invisible hem
Deep hem
to adjust length

Black
Light blue wash
Dark blue wash
White

\$88

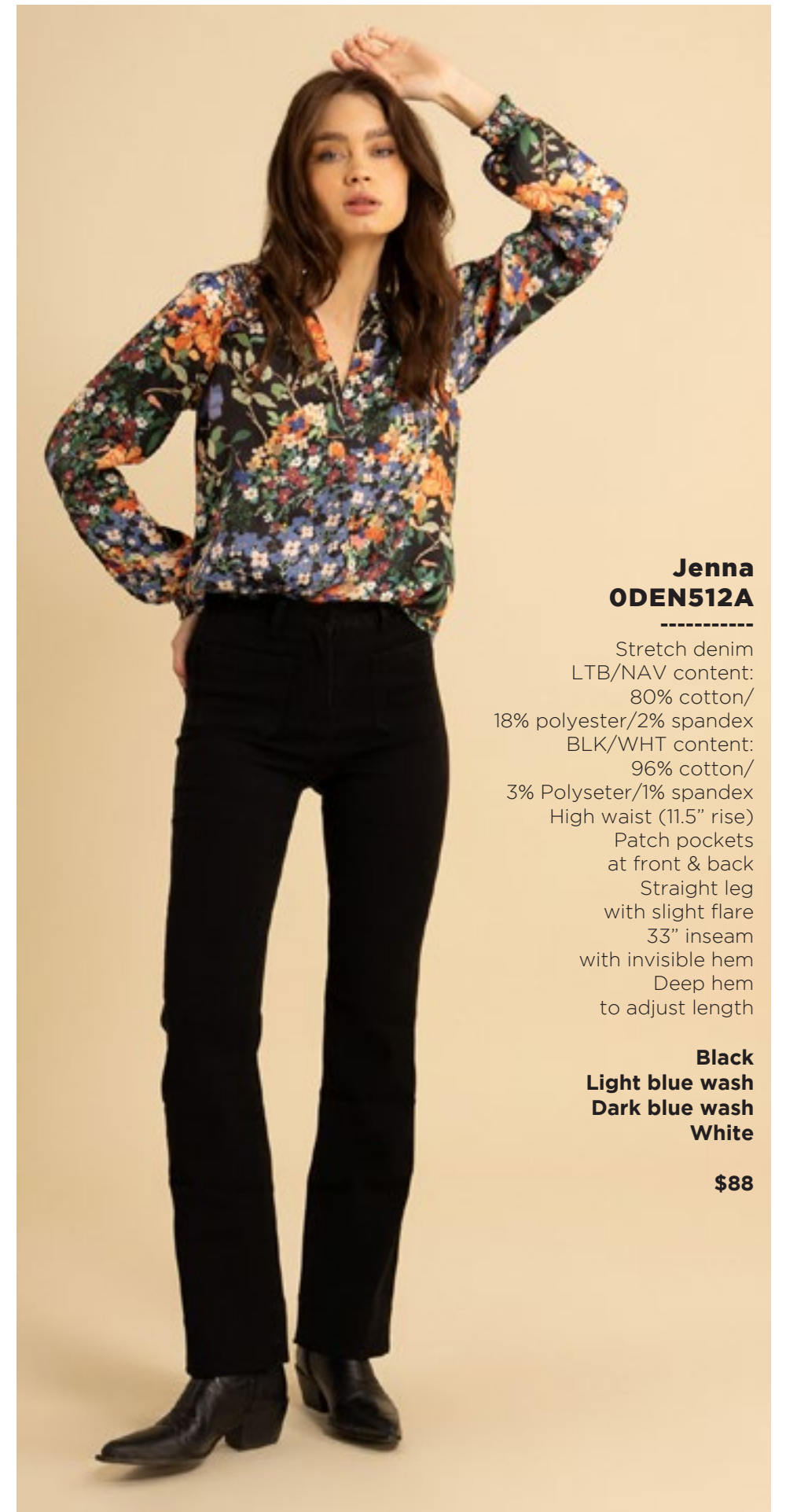


Jenna
ODEN512A

Stretch denim
LTB/NAV content:
80% cotton/
18% polyester/2% spandex
BLK/WHT content:
96% cotton/
3% Polyester/1% spandex
High waist (11.5" rise)
Patch pockets
at front & back
Straight leg
with slight flare
33" inseam
with invisible hem
Deep hem
to adjust length

Black
Light blue wash
Dark blue wash
White

\$88





**Jenna
ODEN512A**

Stretch denim
LTB/NAV content:
80% cotton/
18% polyester/2% spandex
BLK/WHT content:
96% cotton/
3% Polyester/1% spandex
High waist (11.5" rise)
Patch pockets
at front & back
Straight leg
with slight flare
33" inseam
with invisible hem
Deep hem
to adjust length

Black
Light blue wash
Dark blue wash
White

\$88



**Jenna
ODEN512A**

Stretch denim
LTB/NAV content:
80% cotton/
18% polyester/2% spandex
BLK/WHT content:
96% cotton/
3% Polyester/1% spandex
High waist (11.5" rise)
Patch pockets
at front & back
Straight leg
with slight flare
33" inseam
with invisible hem
Deep hem
to adjust length

Black
Light blue wash
Dark blue wash
White

\$88



**Jenna
ODEN512A**

Stretch denim
LTB/NAV content:
80% cotton/
18% polyester/2% spandex
BLK/WHT content:
96% cotton/
3% Polyester/1% spandex
High waist (11.5" rise)
Patch pockets
at front & back
Straight leg
with slight flare
33" inseam
with invisible hem
Deep hem
to adjust length

Black
Light blue wash
Dark blue wash
White

\$88

A woman with long, wavy brown hair and blue eyes is sitting on a bed in a luxurious, ornate bedroom. She is wearing a red dress with a complex, colorful pattern of flowers and paisley designs. She is also wearing large, gold, ornate earrings and black high-heeled shoes. The room features a bed with a gold, ornate headboard and floral-patterned curtains. A round mirror with a gold frame is visible on the wall behind her. A lamp with a white shade is on a bedside table to the right. The overall atmosphere is elegant and sophisticated.

Candy Coated

**Braelynn
48DN230A**

Washed crepe de chine
(100% silk)
Easy fit through body
Voluminous sleeve
with smocked cuff
Low hip with curve hem

**Black
Orange**

\$148



**Holly
48DN530A**

Matte jersey
(96% polyester/
4% spandex)
Elastic at waist
High waist (9.25" rise)
Slim fit with flared leg
Full length (32" inseam)

Black

\$78

**Braelynn
48DN230A**

Washed crepe de chine
(100% silk)
Easy fit through body
Voluminous sleeve
with smocked cuff
Low hip with curve hem

**Black
Orange**

\$148





**Keira
48DN232A**

Velvet Burnout
(60% silk/40% viscose)
Set in jersey lining
at body
(95% viscose/
5% spandex)

**Black
Orange**

\$158



**Keira
48DN232A**

Velvet Burnout
(60% silk/40% viscose)
Set in jersey lining at body
(95% viscose/
5% spandex)

**Black
Orange**

\$158



**Keira
48DN232S**

Velvet Burnout
(60% silk/40% viscose)
Set in jersey lining
at body
(95% viscose/
5% spandex)

Black

\$148

Emelia
48DN234A

Matte jersey
(96% polyester/
4% spandex)
Shirring at side body
Slim fit
3/4 sleeve with cuff

Black
Orange

\$68



Emelia
48DN234A

Matte jersey
(96% polyester/
4% spandex)
Shirring at side body
Slim fit
3/4 sleeve with cuff

Black
Orange

\$68



Cameron
48DN330A

Wool Blend
Jacquard Sweater
(58% Acrylic/
30% Polyester/
10% wool/2%span)
Shawl collar,
fringe at edges
Wrap body with belt
2 button closure
at front waist
Pockets at hips
Low hip length
(28" HPS)

Black
Ivory

\$118



**Cameron
48DN330A**

Wool Blend
Jacquard Sweater
(58% Acrylic/
30% Polyester/
10% wool/2%span)
Shawl collar,
fringe at edges
Wrap body with belt
2 button closure
at front waist
Pockets at hips
Low hip length
(28" HPS)

**Black
Ivory**

\$118



**Matilda
48DN332A**

Wool Blend
Jacquard Blanket
(58% Acrylic/
30% Polyester/
10% wool/2%span)
45" width x 72" length

**Black
Ivory**

\$88



**Matilda
48DN332A**

Wool Blend
Jacquard Blanket
(58% Acrylic/
30% Polyester/
10% wool/2%span)
45" width x 72" length

**Black
Ivory**

\$88





**Kennedi
48DN334A**

100% viscose
Slim easy fit
Long sleeve
Hip length

**Black
Orange**

\$72



**Kennedi
48DN334A**

100% viscose
Slim easy fit
Long sleeve
Hip length

**Black
Orange**

\$72



**Alora
48DN630A**

Velvet Burnout
(60% silk/40% viscose)
Set in jersey lining at body
(95% viscose/
5% spandex)
Easy shift silhouette
7/8 length bell sleeve
Above the knee length
(35.5" HPS)

**Black
Orange**

\$188

Alora
48DN630A

Velvet Burnout
(60% silk/40% viscose)
Set in jersey lining at body
(95% viscose/
5% spandex)
Easy shift silhouette
7/8 length bell sleeve
Above the knee length
(35.5" HPS)

Black
Orange

\$188



Alora
48DN630S

Velvet Burnout
(60% silk/40% viscose)
Set in jersey lining at body
(95% viscose/
5% spandex)
Easy shift silhouette
7/8 length bell sleeve
Above the knee length
(35.5" HPS)

Black

\$178



Kamryn
48DN632A

Washed charmeuse
(54%rayon/46%viscose)
Buttons at front body
are functional at very
top & bottom
Kimono sleeve
Pockets at hips
Voluminous tier at skirt
Midi length
(47" HPS)

Black
Orange

\$138



Kamryn
48DN632A

Washed charmeuse
(54%rayon/46%viscose)
Buttons at front body
are functional at very
top & bottom
Kimono sleeve
Pockets at hips
Voluminous tier at skirt
Midi length
(47" HPS)

Black
Orange

\$138



Rosie
48DN634A

Matte jersey
(96% polyester/
4% spandex)
Pockets at hips
7/8 length bell sleeve
Easy a-line body
Above the knee length
(35.5" HPS)

Black
Orange

\$98



Rosie
48DN634A

Matte jersey
(96% polyester/
4% spandex)
Pockets at hips
7/8 length bell sleeve
Easy a-line body
Above the knee length
(35.5" HPS)

Black
Orange

\$98



Dreamland





**Sarai
48EM240A**

Washed charmeuse
(100% Polyester)
Smocking with tie
at neck
Buttons at front keyhole
Long sleeve
with smocked cuff
Hip length
with curved hem

**Black
Blue**

\$88



**Sarai
48EM240A**

Washed charmeuse
(100% Polyester)
Smocking with tie
at neck
Buttons at front keyhole
Long sleeve
with smocked cuff
Hip length
with curved hem

**Black
Blue**

\$88



**Sarai
48EM240S**

Washed charmeuse
(100% Polyester)
Smocking with tie
at neck
Buttons at front keyhole
Long sleeve
with smocked cuff
Hip length
with curved hem

**Black
Emerald
Deep Fuschia**

\$78



**Sarai
48EM240S**

Washed charmeuse
(100% Polyester)
Smocking with tie
at neck
Buttons at front keyhole
Long sleeve
with smocked cuff
Hip length
with curved hem

**Black
Emerald
Deep Fuschia**

\$78



**Sarai
48EM240S**

Washed charmeuse
(100% Polyester)
Smocking with tie
at neck
Buttons at front keyhole
Long sleeve
with smocked cuff
Hip length
with curved hem

**Black
Emerald
Deep Fuschia**

\$78



**Jolene
48EM242A**

Matte jersey front & sleeves
(90% polyester/
10%spandex)
Washed charmeuse yokes
& pleated back
(100% Polyester)
High hip length

Blue

\$78

Esmeralda
48EM640A

Washed charmeuse
(100% Polyester)
Smocked waistband
Crystal pleated ruffles
& tiers
3/4 length bell sleeve
with pleated ruffle
Above the knee length
(35.5" HPS)

Black

\$128



**Esmeralda
48EM640S**

Washed charmeuse
(100% Polyester)
Smocked waistband
Crystal pleated ruffles
& tiers
3/4 length bell sleeve
with pleated ruffle
Above the knee length
(35.5" HPS)

**Black
Emerald**

\$118



**Esmeralda
48EM640S**

Washed charmeuse
(100% Polyester)
Smocked waistband
Crystal pleated ruffles
& tiers
3/4 length bell sleeve
with pleated ruffle
Above the knee length
(35.5" HPS)

**Black
Emerald**

\$118



**Bristol
48EM642A**

Heavyweight stretch ponte
(68% Rayon/28% Nylon/
4%Spandex)
Contrast detailing
Zip at front neck
Snaps at pockets
& sleeve tabs
Functional lower pockets
Above the knee length
(35.5" HPS)

Black

\$78





Shimmering Light



**Jazlyn
48LG250A**

Crinkle lurex mesh
(100% polyester)
Jersey lining at body
(100% polyester)
Flower enamel buttons
at front opening
Yoke with ruffle detail
Long sleeve
with smocked cuff

**Black
Emerald
Silver**

\$68



**Jazlyn
48LG250A**

Crinkle lurex mesh
(100% polyester)
Jersey lining at body
(100% polyester)
Flower enamel buttons
at front opening
Yoke with ruffle detail
Long sleeve
with smocked cuff

**Black
Emerald
Silver**

\$68



**Jazlyn
48LG250A**

Crinkle lurex mesh
(100% polyester)
Jersey lining at body
(100% polyester)
Flower enamel buttons
at front opening
Yoke with ruffle detail
Long sleeve
with smocked cuff

**Black
Emerald
Silver**

\$68



**Bianca
48LG650A**

Crinkle lurex mesh
(100% polyester)
Jersey lining at body
(100% polyester)
Smocked waistband
Tiered skirt
Long sleeve
with smocking
Above the knee length
(35.5" HPS)

**Black
Emerald
Silver**

\$88



**Bianca
48LG650A**

Crinkle lurex mesh
(100% polyester)
Jersey lining at body
(100% polyester)
Smocked waistband
Tiered skirt
Long sleeve
with smocking
Above the knee length
(35.5" HPS)

**Black
Emerald
Silver**

\$88



**Bianca
48LG650A**

Crinkle lurex mesh
(100% polyester)
Jersey lining at body
(100% polyester)
Smocked waistband
Tiered skirt
Long sleeve
with smocking
Above the knee length
(35.5" HPS)

**Black
Emerald
Silver**

\$88





**Bianca
48LG650M**

Crinkle lurex mesh
(100% polyester)
Jersey lining at body
(100% polyester)
Smocked waistband
Tiered skirt
Long sleeve
with smocking
Maxi length
(55" HPS)

**Black
Emerald
Silver**

\$118



**Bianca
48LG650M**

Crinkle lurex mesh
(100% polyester)
Jersey lining at body
(100% polyester)
Smocked waistband
Tiered skirt
Long sleeve
with smocking
Maxi length
(55" HPS)

**Black
Emerald
Silver**

\$118



**Bianca
48LG650M**

Crinkle lurex mesh
(100% polyester)
Jersey lining at body
(100% polyester)
Smocked waistband
Tiered skirt
Long sleeve
with smocking
Maxi length
(55" HPS)

**Black
Emerald
Silver**

\$118

Adelina
48LG652A

Crinkle lurex mesh
(100% polyester)
Jersey lining at body
(100% polyester)
Smocked waistband
Flouce tiered skirt
Ankle length at front
with hi/low hem
(49" at front,
55" at back)

Black
Emerald
Silver

\$118



Adelina
48LG652A

Crinkle lurex mesh
(100% polyester)
Jersey lining at body
(100% polyester)
Smocked waistband
Flouce tiered skirt
Ankle length at front
with hi/low hem
(49" at front,
55" at back)

Black
Emerald
Silver

\$118



Adelina
48LG652A

Crinkle lurex mesh
(100% polyester)
Jersey lining at body
(100% polyester)
Smocked waistband
Flouce tiered skirt
Ankle length at front
with hi/low hem
(49" at front,
55" at back)

Black
Emerald
Silver

\$118





A woman with voluminous, wavy brown hair is sitting on a bed in a luxurious, ornate room. She is wearing a dark, long-sleeved dress with a vibrant floral pattern in shades of blue, gold, and purple. She is also wearing large, silver, teardrop-shaped earrings. The room features a bed with white linens and a floral canopy, two round mirrors with ornate gold frames, and a lamp with a white shade. The overall atmosphere is elegant and sophisticated.

Living
Fantasy

**Paris
48VT260A**

Washed crepe de chine
(100% silk)
Buttons at front placket
Long sleeve
with cuff
Hip length
with curved hem

**Black
Emerald
Pink**

\$148



**Paris
48VT260A**

Washed crepe de chine
(100% silk)
Buttons at front placket
Long sleeve
with cuff
Hip length
with curved hem

**Black
Emerald
Pink**

\$148

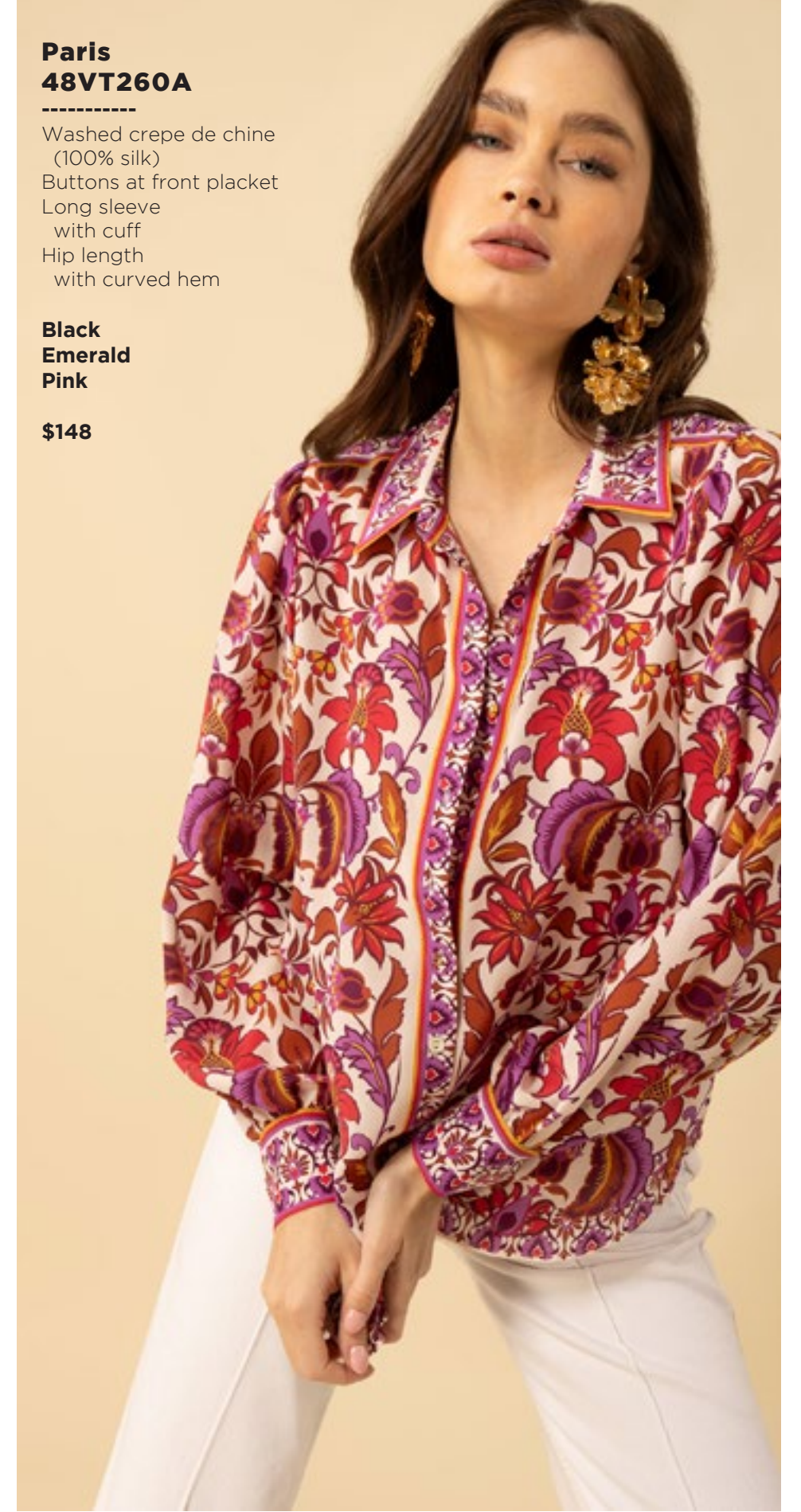


**Paris
48VT260A**

Washed crepe de chine
(100% silk)
Buttons at front placket
Long sleeve
with cuff
Hip length
with curved hem

**Black
Emerald
Pink**

\$148



**Lorelei
48VT262A**

Matte jersey
(96% polyester/
4% spandex)
Pleat at front
under placket
Long sleeve
with smocked cuff
Slim, easy fit
Hip length
with curved hem

**Black
Emerald
Pink**

\$68



**Lorelei
48VT262A**

Matte jersey
(96% polyester/
4% spandex)
Pleat at front
under placket
Long sleeve
with smocked cuff
Slim, easy fit
Hip length
with curved hem

**Black
Emerald
Pink**

\$68

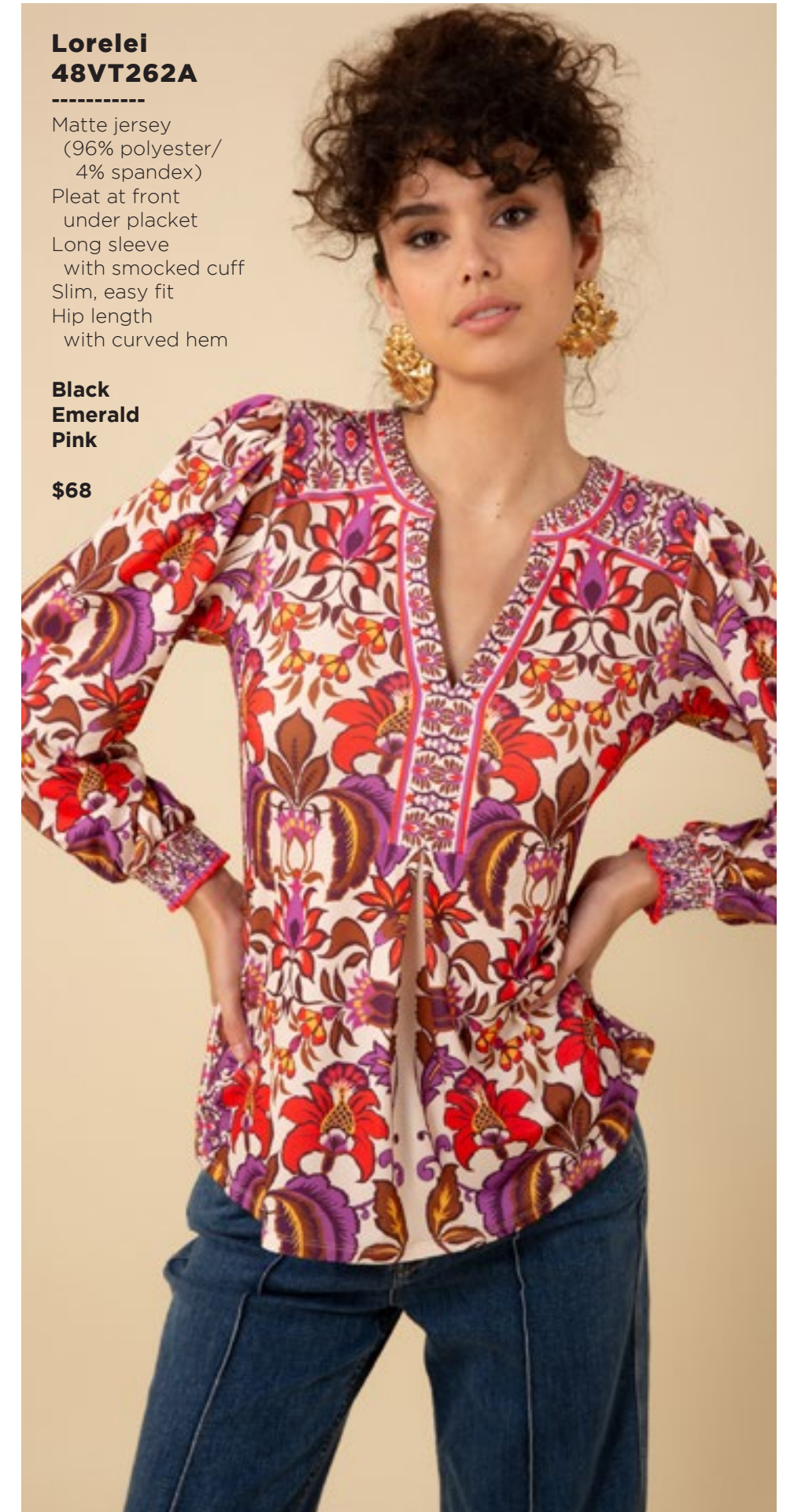


**Lorelei
48VT262A**

Matte jersey
(96% polyester/
4% spandex)
Pleat at front
under placket
Long sleeve
with smocked cuff
Slim, easy fit
Hip length
with curved hem

**Black
Emerald
Pink**

\$68





**Danielle
48VT264A**

Velvet Burnout
(60% silk/40% viscose)
Set in jersey lining at body
(95% viscose/
5% spandex)
Shirring at front & back
body under yokes

**Black
Emerald
Pink**

\$158



**Danielle
48VT264A**

Velvet Burnout
(60% silk/40% viscose)
Set in jersey lining at body
(95% viscose/
5% spandex)
Shirring at front & back
body under yokes

**Black
Emerald
Pink**

\$158



**Danielle
48VT264A**

Velvet Burnout
(60% silk/40% viscose)
Set in jersey lining at body
(95% viscose/
5% spandex)
Shirring at front & back
body under yokes

**Black
Emerald
Pink**

\$158



**Danielle
48VT264S**

Velvet Burnout
(60% silk/40% viscose)
Set in jersey lining at body
(95% viscose/
5% spandex)
Shirring at front & back
body under yokes

**Emerald
Navy**

\$148

**Danielle
48VT264S**

Velvet Burnout
(60% silk/40% viscose)
Set in jersey lining at body
(95% viscose/
5% spandex)
Shirring at front & back
body under yokes

**Emerald
Navy**

\$148



**Monroe
48VT360A**

100% viscose
Slim easy fit
Long sleeve
Hip length

**Black
Pink**

\$72



Monroe
48VT360A

100% viscose
Slim easy fit
Long sleeve
Hip length

Black
Pink

\$72



Alexa
48VT660A

Velvet Burnout
(60% silk/40% viscose)
Set in jersey lining at body
(95% viscose/
5% spandex)
Smocked waistband
Tier at skirt, pocket at hips
Above the knee
length (35.5" HPS)

Black
Emerald
Pink

\$218



Alexa
48VT660A

Velvet Burnout
(60% silk/40% viscose)
Set in jersey lining at body
(95% viscose/
5% spandex)
Smocked waistband
Tier at skirt, pocket at hips
Above the knee
length (35.5" HPS)

Black
Emerald
Pink

\$218





**Alexa
48VT660A**

Velvet Burnout
(60% silk/40% viscose)
Set in jersey lining at body
(95% viscose/
5% spandex)
Smocked waistband
Tier at skirt, pocket at hips
Above the knee
length (35.5" HPS)

**Black
Emerald
Pink**

\$218



**Alexa
48VT660M**

Velvet Burnout
(60% silk/40% viscose)
Set in jersey lining at body
(95% viscose/
5% spandex)
Smocked waistband
Tier at skirt, pocket at hips
Maxi
(57" HPS)

**Black
Emerald
Pink**

\$248



**Alexa
48VT660M**

Velvet Burnout
(60% silk/40% viscose)
Set in jersey lining at body
(95% viscose/
5% spandex)
Smocked waistband
Tier at skirt, pocket at hips
Maxi
(57" HPS)

**Black
Emerald
Pink**

\$248



**Alexa
48VT660M**

Velvet Burnout
(60% silk/40% viscose)
Set in jersey lining at body
(95% viscose/
5% spandex)
Smocked waistband
Tier at skirt, pocket at hips
Maxi
(57" HPS)

**Black
Emerald
Pink**

\$248



**Alexa
48VT660S**

Velvet Burnout
(60% silk/40% viscose)
Set in jersey lining at body
(95% viscose/
5% spandex)
Smocked waistband
Tier at skirt, pocket at hips
Above the knee length
(35.5" HPS)

**Emerald
Navy**

\$208



**Alexa
48VT660S**

Velvet Burnout
(60% silk/40% viscose)
Set in jersey lining at body
(95% viscose/
5% spandex)
Smocked waistband
Tier at skirt, pocket at hips
Above the knee length
(35.5" HPS)

**Emerald
Navy**

\$208

Felicity
48VT662A

Washed charmeuse
(54%rayon/46%viscose)
Smocking at waist
Flutter sleeve
Pockets at hips
Maxi length
(57" HPS)

Black
Emerald

\$138



Felicity
48VT662A

Washed charmeuse
(54%rayon/46%viscose)
Smocking at waist
Flutter sleeve
Pockets at hips
Maxi length
(57" HPS)

Black
Emerald

\$138



Helen
48VT664A

Matte jersey
(96% polyester/
4% spandex)
Mesh lining
(92% nylon/8% spandex)
Pleat at CF under placket
Long sleeve
with cuff
Above the knee length
(35.5" HPS)

Black
Emerald
Pink

\$98





**Helen
48VT664A**

Matte jersey
(96% polyester/
4% spandex)
Mesh lining
(92% nylon/8% spandex)
Pleat at CF under placket
Long sleeve
with cuff
Above the knee length
(35.5" HPS)

**Black
Emerald
Pink**

\$98



**Helen
48VT664A**

Matte jersey
(96% polyester/
4% spandex)
Mesh lining
(92% nylon/8% spandex)
Pleat at CF under placket
Long sleeve
with cuff
Above the knee length
(35.5" HPS)

**Black
Emerald
Pink**

\$98



**Helen
48VT664D**

Matte jersey
(96% polyester/
4% spandex)
Mesh lining
(92% nylon/8% spandex)
Pleat at CF under placket
Long sleeve
with cuff
Below the knee length
(40" HPS)

Black

\$108

This book is a presentation of a selection of Hale Bob product and is correct at time of publication.

To view the entire collection of products including updates and additions. You can view product line sheets at halebob.com by logging into the "Merchant" section of our website.

Prices and products posted in this book are current at time of publication but are subject to change.

Sales Director
East Coast
South

Sales Executive
Latin America
West Coast

Sales Executive
Southwest
Midwest

Cathy Cooley
310-963-2463
cathy@halebob.com

Isabela Peralta
323-394-1739
isabela@halebob.com

Tracy Holden
214-454-1176
tracy@halebob.com

For Marketing & Press Inquiries:

Marianna Gunther
marianna@halebob.com

HALE BOB

LOS ANGELES

