

HALE BOB

LOS ANGELES

Season 7





Made To
Treasure



**Sabrina
47AA210A**

Washed silk georgette
(100% silk)
Jersey lining
(95% viscose/
5% spandex)
Ruffle with smocking
at neckline
Long sleeve
with smocked cuff
at wrist

**47AA210B
(BEADED)**

Hand beading
on neckline

**Black
Teal**



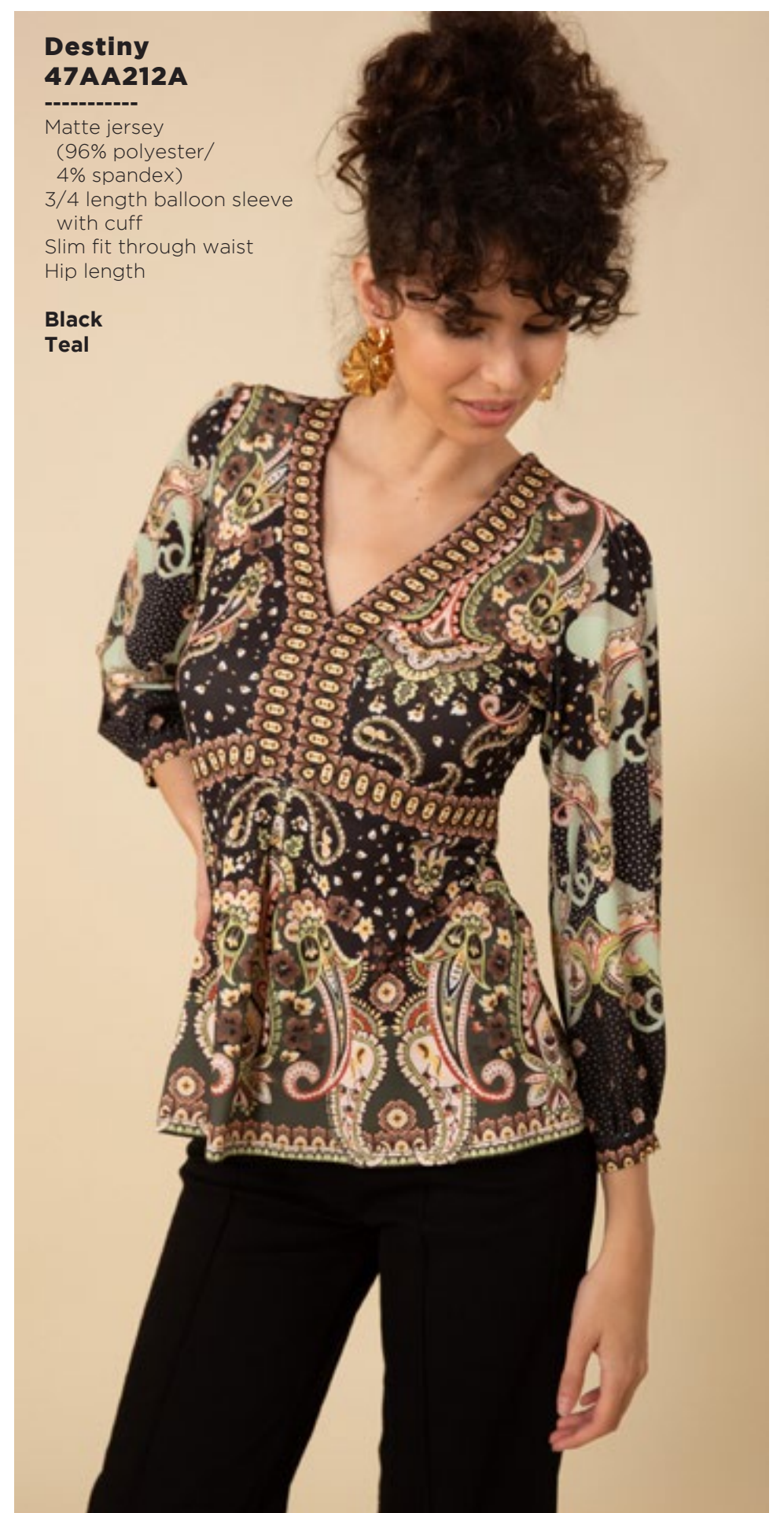
**Sabrina
47AA210A**

Washed silk georgette
(100% silk)
Jersey lining
(95% viscose/
5% spandex)
Ruffle with smocking
at neckline
Long sleeve
with smocked cuff
at wrist

**47AA210B
(BEADED)**

Hand beading
on neckline

**Black
Teal**



**Destiny
47AA212A**

Matte jersey
(96% polyester/
4% spandex)
3/4 length balloon sleeve
with cuff
Slim fit through waist
Hip length

**Black
Teal**

**Destiny
47AA212A**

Matte jersey
(96% polyester/
4% spandex)
3/4 length balloon sleeve
with cuff
Slim fit through waist
Hip length

**Black
Teal**



**Gwendolyn
47AA310A**

Jacquard Sweater
(50%Viscose/
25%Polyamide/
25%Polyester)
Easy fit through body
Hip length

**Black
Green
Pink**



**Gwendolyn
47AA310A**

Jacquard Sweater
(50%Viscose/
25%Polyamide/
25%Polyester)
Easy fit through body
Hip length

**Black
Green
Pink**



**Gwendolyn
47AA310A**

Jacquard Sweater
(50%Viscose/
25%Polyamide/
25%Polyester)
Easy fit through body
Hip length

**Black
Green
Pink**



**Alessandra
47AA312A**

Wool Blend
Jacquard Sweater
(58% Acrylic/
30% Polyester/
10% wool/2%span)
Shawl collar,
fringe at edges
Wrap body with belt
2 button closure
at front waist
Low hip length
(28" HPS)

**Black
Ivory
Pink**



**Alessandra
47AA312A**

Wool Blend
Jacquard Sweater
(58% Acrylic/
30% Polyester/
10% wool/2%span)
Shawl collar,
fringe at edges
Wrap body with belt
2 button closure
at front waist
Low hip length
(28" HPS)

**Black
Ivory
Pink**



**Alessandra
47AA312A**

Wool Blend
Jacquard Sweater
(58% Acrylic/
30% Polyester/
10% wool/2%span)
Shawl collar,
fringe at edges
Wrap body with belt
2 button closure
at front waist
Low hip length
(28" HPS)

**Black
Ivory
Pink**



**Maliyah
47AA410A**

Washed chiffon
(70% rayon/30% silk)
Woven lining
(100% Viscose)
Smocking at waist
Tiered voluminous skirt
Pockets at hips

**Black
Teal**



**Maliyah
47AA410A**

Washed chiffon
(70% rayon/30% silk)
Woven lining
(100% Viscose)
Smocking at waist
Tiered voluminous skirt
Pockets at hips

**Black
Teal**



**Amora
47AA610A**

Matte jersey
(96% polyester/
4% spandex)
Mesh lining
(92% nylon/8% spandex)
Pleat at CF under placket
Pockets at hips
Long sleeve with cuff
Deep hem
added for length
Above the knee
(35" HPS)

**Black
Teal**



**Amora
47AA610A**

Matte jersey
(96% polyester/
4% spandex)
Mesh lining
(92% nylon/8% spandex)
Pleat at CF under placket
Pockets at hips
Long sleeve with cuff
Deep hem
added for length
Above the knee
(35" HPS)

**Black
Teal**



**Amora
47AA610D**

Matte jersey
(96% polyester/
4% spandex)
Mesh lining
(92% nylon/8% spandex)
Pleat at CF under placket
Pockets at hips
Long sleeve with cuff
Deep hem
added for length
Below the knee
(41" HPS)

**Black
Teal**





**Amora
47AA610D**

Matte jersey
(96% polyester/
4% spandex)
Mesh lining
(92% nylon/8% spandex)
Pleat at CF under placket
Pockets at hips
Long sleeve with cuff
Deep hem
added for length
Below the knee
(41" HPS)

**Black
Teal**

**Nylah
47AA612A**

Washed chiffon
(70% rayon/30% silk)
Jersey lining at bust
(95% viscose/
5% spandex)
Woven lining at skirt
(100% Viscose)
V-neck with ruffle
Smocking
at neck & waist
Long sleeve
Tiered voluminous skirt
Pockets at hips
Maxi length
(57" HPS)

**Black
Teal**



**Nylah
47AA612A**

Washed chiffon
(70% rayon/30% silk)
Jersey lining at bust
(95% viscose/
5% spandex)
Woven lining at skirt
(100% Viscose)
V-neck with ruffle
Smocking
at neck & waist
Long sleeve
Tiered voluminous skirt
Pockets at hips
Maxi length
(57" HPS)

**Black
Teal**







Earthly Wonders



**Maisie
47DY220A**

Washed crepe de chine
(100% silk)
Shirring at front
under yoke
Button at top neck
Long full sleeve
with elastic & ruffle
Low hip length
with curved hem

**Beige
Navy**



**Maisie
47DY220A**

Washed crepe de chine
(100% silk)
Shirring at front
under yoke
Button at top neck
Long full sleeve
with elastic & ruffle
Low hip length
with curved hem

**Beige
Navy**



**Miracle
47DY22A**

Matte jersey
(96% polyester/
4% spandex)
3/4 sleeve with cuff
Slim fit through body,
pleat under placket
Hip length

**47DY22B
(BEADED)**

Hand beading
on neckline

**Beige
Navy**

**Miracle
47DY22A**

Matte jersey
(96% polyester/
4% spandex)
3/4 sleeve with cuff
Slim fit through body,
pleat under placket
Hip length

47DY22B

(BEADED)
Hand beading
on neckline

**Beige
Navy**



**Liana
47DY224A**

Velvet Burnout
(60% silk/40% viscose)
Set in jersey lining at body
(95% viscose/
5% spandex)
Buttons at front keyhole
Long sleeve,
Hip length
with curved hem

**Beige
Navy**



**Liana
47DY224A**

Velvet Burnout
(60% silk/40% viscose)
Set in jersey lining at body
(95% viscose/
5% spandex)
Buttons at front keyhole
Long sleeve,
Hip length
with curved hem

**Beige
Navy**



Liana
47DY224S

Velvet Burnout
(60% silk/40% viscose)
Set in jersey lining at body
(95% viscose/
5% spandex)
Buttons at front keyhole
Long sleeve,
Hip length
with curved hem

Gold
Lavender
Navy



Liana
47DY224S

Velvet Burnout
(60% silk/40% viscose)
Set in jersey lining at body
(95% viscose/
5% spandex)
Buttons at front keyhole
Long sleeve,
Hip length
with curved hem

Gold
Lavender
Navy



Liana
47DY224S

Velvet Burnout
(60% silk/40% viscose)
Set in jersey lining at body
(95% viscose/
5% spandex)
Buttons at front keyhole
Long sleeve,
Hip length
with curved hem

Gold
Lavender
Navy





**Raven
47DY620A**

Velvet Burnout
(60% silk/40% viscose)
Set in jersey lining at body
(95% viscose/
5% spandex)
Buttons at front body
are functional at very
top & bottom
Kimono sleeve
Voluminous tier at skirt
Midi length
(47" HPS)

**Beige
Navy**



**Raven
47DY620A**

Velvet Burnout
(60% silk/40% viscose)
Set in jersey lining at body
(95% viscose/
5% spandex)
Buttons at front body
are functional at very
top & bottom
Kimono sleeve
Voluminous tier at skirt
Midi length
(47" HPS)

**Beige
Navy**



**Raven
47DY620S**

Velvet Burnout
(60% silk/40% viscose)
Set in jersey lining at body
(95% viscose/
5% spandex)
Buttons at front body
are functional at very
top & bottom
Kimono sleeve
Voluminous tier at skirt
Midi length
(47" HPS)

**Gold
Navy**

Raven
47DY620S

Velvet Burnout
(60% silk/40% viscose)
Set in jersey lining at body
(95% viscose/
5% spandex)
Buttons at front body
are functional at very
top & bottom
Kimono sleeve
Voluminous tier at skirt
Midi length
(47" HPS)

Gold
Navy



Shiloh
47DY622A

Matte jersey
(96% polyester/
4% spandex)
Mesh lining
(95% nylon/8% spandex)
Slim fit through waist
Long full sleeve with cuff
A-line skirt with pleat
at waist
Below the knee length
(40" HPS)

47DY222B
(BEADED)

Hand beading
on neckline

Beige
Navy





**Shiloh
47DY622A**

Matte jersey
(96% polyester/
4% spandex)
Mesh lining
(95% nylon/8% spandex)
Slim fit through waist
Long full sleeve with cuff
A-line skirt with pleat
at waist
Below the knee length
(40" HPS)

47DY222B
(BEADED)

Hand beading
on neckline

**Beige
Navy**

NOTE: the NAV color will
be deeper in production,
matching the linen.



**Allie
47DY624A**

Lightweight washed linen
(100% linen)
Body is lined
(100% viscose)
Buttons at front body:
only the top and
lower skirt buttons are
functional.
Invisible zipper at back
3/4 length sleeve
with elastic
Slim fit through body
Slim top skirt
with ruffle
Tie belt at waist
Ankle length
(51" HPS)

**Beige
Navy**



**Allie
47DY624A**

Lightweight washed linen
(100% linen)
Body is lined
(100% viscose)
Buttons at front body:
only the top and
lower skirt buttons are
functional.
Invisible zipper at back
3/4 length sleeve
with elastic
Slim fit through body
Slim top skirt
with ruffle
Tie belt at waist
Ankle length
(51" HPS)

**Beige
Navy**





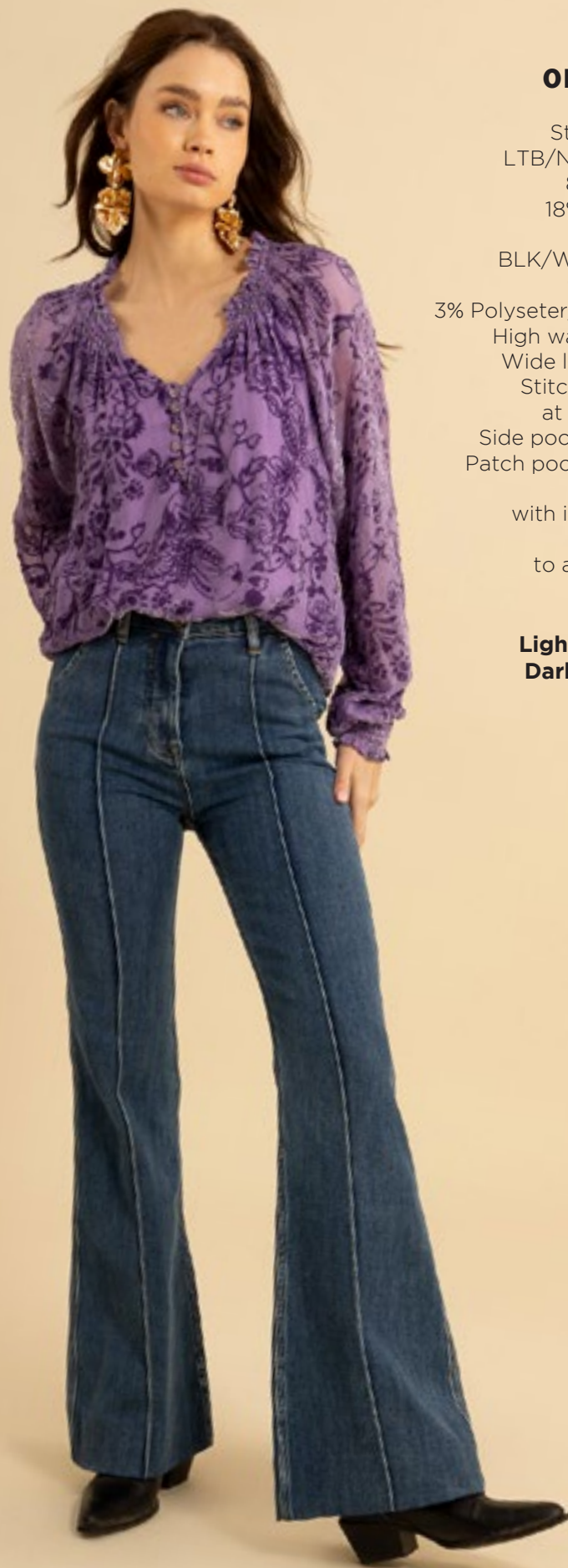
Limited
Edition
Denim



**Blake
ODEN510B**

Stretch denim
LTB/NAV content:
80% cotton/
18% polyester/
2% spandex
BLK/WHT content:
96% cotton/
3% Polyester/1% spandex
High waist (12" rise)
Wide leg with flare
Stitched pin tuck
at front & back
Side pockets at front
Patch pockets at back
33" inseam
with invisible hem
Deep hem
to adjust length

**Black
Light blue wash
Dark blue wash
White**



**Blake
ODEN510B**

Stretch denim
LTB/NAV content:
80% cotton/
18% polyester/
2% spandex
BLK/WHT content:
96% cotton/
3% Polyester/1% spandex
High waist (12" rise)
Wide leg with flare
Stitched pin tuck
at front & back
Side pockets at front
Patch pockets at back
33" inseam
with invisible hem
Deep hem
to adjust length

**Black
Light blue wash
Dark blue wash
White**



**Blake
ODEN510B**

Stretch denim
LTB/NAV content:
80% cotton/
18% polyester/
2% spandex
BLK/WHT content:
96% cotton/
3% Polyester/1% spandex
High waist (12" rise)
Wide leg with flare
Stitched pin tuck
at front & back
Side pockets at front
Patch pockets at back
33" inseam
with invisible hem
Deep hem
to adjust length

**Black
Light blue wash
Dark blue wash
White**

Blake
ODEN510B

Stretch denim
LTB/NAV content:
80% cotton/
18% polyester/
2% spandex
BLK/WHT content:
96% cotton/
3% Polyester/1% spandex
High waist (12" rise)
Wide leg with flare
Stitched pin tuck
at front & back
Side pockets at front
Patch pockets at back
33" inseam
with invisible hem
Deep hem
to adjust length

Black
Light blue wash
Dark blue wash
White



Jenna
ODEN512A

Stretch denim
LTB/NAV content:
80% cotton/
18% polyester/2% spandex
BLK/WHT content:
96% cotton/
3% Polyester/1% spandex
High waist (11.5" rise)
Patch pockets
at front & back
Straight leg
with slight flare
33" inseam
with invisible hem
Deep hem
to adjust length

Black
Light blue wash
Dark blue wash
White





**Jenna
ODEN512A**

Stretch denim
LTB/NAV content:
80% cotton/
18% polyester/2% spandex
BLK/WHT content:
96% cotton/
3% Polyester/1% spandex
High waist (11.5" rise)
Patch pockets
at front & back
Straight leg
with slight flare
33" inseam
with invisible hem
Deep hem
to adjust length

Black
Light blue wash
Dark blue wash
White



**Jenna
ODEN512A**

Stretch denim
LTB/NAV content:
80% cotton/
18% polyester/2% spandex
BLK/WHT content:
96% cotton/
3% Polyester/1% spandex
High waist (11.5" rise)
Patch pockets
at front & back
Straight leg
with slight flare
33" inseam
with invisible hem
Deep hem
to adjust length

Black
Light blue wash
Dark blue wash
White



**Jenna
ODEN512A**

Stretch denim
LTB/NAV content:
80% cotton/
18% polyester/2% spandex
BLK/WHT content:
96% cotton/
3% Polyester/1% spandex
High waist (11.5" rise)
Patch pockets
at front & back
Straight leg
with slight flare
33" inseam
with invisible hem
Deep hem
to adjust length

Black
Light blue wash
Dark blue wash
White



A Cut Above



**Daleyza
47ET230A**

Washed crepe de chine
(100% silk)
Buttons at front placket
Voluminous sleeve
with cuff
Low hip length
with slits at sides

**Coral
Periwinkle**



**Daleyza
47ET230A**

Washed crepe de chine
(100% silk)
Buttons at front placket
Voluminous sleeve
with cuff
Low hip length
with slits at sides

**Coral
Periwinkle**



**Kate
47ET232A**

Matte jersey
(96% polyester/
4% spandex)
3/4 bell sleeve
Slim fit through body
Hip length

**Coral
Periwinkle**



Kate
47ET232A

Matte jersey
(96% polyester/
4% spandex)
3/4 bell sleeve
Slim fit through body
Hip length

Coral
Periwinkle



Lexi
47ET530A

Heavyweight stretch ponte
(68% Rayon/28% Nylon/
4%Spandex)
Functional zip at front
Buttons at front hips
Slim through thigh to flare
Full length
(31" Inseam)

Black



Lyric
47ET532A

Faux Leather
(100% Poly, fuzzy inside of
fabric)
Functional zip at front
Buttons at front hips
Slim through thigh to flare
Full length
(31" Inseam)

Black
Ivory
Olive



**Lyric
47ET532A**

Faux Leather
(100% Poly, fuzzy
inside of fabric)
Functional zip at front
Buttons at front hips
Slim through
thigh to flare
Full length
(31" Inseam)

**Black
Ivory
Olive**



**Lyric
47ET532A**

Faux Leather
(100% Poly, fuzzy inside of
fabric)
Functional zip at front
Buttons at front hips
Slim through thigh to flare
Full length
(31" Inseam)

**Black
Ivory
Olive**



**Addilyn
47ET630A**

Matte jersey
(96% polyester/
4% spandex)
Easy/slim fit through
bodice
Long sleeve
with smocked cuff
Swingy tiered skirt
Above the knee length
(35.5" HPS)

**Coral
Periwinkle**



**Addilyn
47ET630A**

Matte jersey
(96% polyester/
4% spandex)
Easy/slim fit through
bodice
Long sleeve
with smocked cuff
Swingy tiered skirt
Above the knee length
(35.5" HPS)

**Coral
Periwinkle**



**Anaya
47ET632A**

Matte jersey
(96% polyester/
4% spandex)
Faux wrap silhouette
3/4 sleeve
with cuff
Skirt with slit
over the leg
Midi length
(42" HPS)

**Coral
Periwinkle**



**Anaya
47ET632A**

Matte jersey
(96% polyester/
4% spandex)
Faux wrap silhouette
3/4 sleeve
with cuff
Skirt with slit
over the leg
Midi length
(42" HPS)

**Coral
Periwinkle**



Need For Tweed





**Malani
47NT240A**

Boucle Tweed
with fringe detailing
Fully lined
(100% Polyester)
Lower pockets functional
Black: (60% Polyester/
50% Cotton)
Coral: (90% Polyester/
10% mixed ribbons)
Navy: (70% Polyester/
30% Wool)

**Black & White
Coral
Navy**



**Malani
47NT240A**

Boucle Tweed
with fringe detailing
Fully lined
(100% Polyester)
Lower pockets functional
Black: (60% Polyester/
50% Cotton)
Coral: (90% Polyester/
10% mixed ribbons)
Navy: (70% Polyester/
30% Wool)

**Black & White
Coral
Navy**



**Malani
47NT240A**

Boucle Tweed
with fringe detailing
Fully lined
(100% Polyester)
Lower pockets functional
Black: (60% Polyester/
50% Cotton)
Coral: (90% Polyester/
10% mixed ribbons)
Navy: (70% Polyester/
30% Wool)

**Black & White
Coral
Navy**

**Paislee
47NT440A**

Boucle Tweed
with fringe detailing
Fully lined
(100% Polyester)
Side Zip
Length from waist to hem:

Black: (60% Polyester/
50% Cotton)
Coral: (90% Polyester/
10% mixed ribbons)
Navy: (70% Polyester/
30% Wool)

NOTE: the production
will only have fringe
at the hem

**Black & White
Coral
Navy**



**Paislee
47NT440A**

Boucle Tweed
with fringe detailing
Fully lined
(100% Polyester)
Side Zip
Length from waist to hem:

Black: (60% Polyester/
50% Cotton)
Coral: (90% Polyester/
10% mixed ribbons)
Navy: (70% Polyester/
30% Wool)

NOTE: the production
will only have fringe
at the hem

**Black & White
Coral
Navy**



**Paislee
47NT440A**

Boucle Tweed
with fringe detailing
Fully lined
(100% Polyester)
Side Zip
Length from waist to hem:

Black: (60% Polyester/
50% Cotton)
Coral: (90% Polyester/
10% mixed ribbons)
Navy: (70% Polyester/
30% Wool)

NOTE: the production
will only have fringe
at the hem

**Black & White
Coral
Navy**





**Kayleigh
47NT540A**

Boucle Tweed
with fringe detailing
Fully lined
(100% Polyester)
Patch pockets at front
Zip fly at front
Slim fit through thigh,
flared leg
Inseam 31"
Black: (60% Polyester/
50% Cotton)
Coral: (90% Polyester/
10% mixed ribbons)
Navy: (70% Polyester/
30% Wool)

**Black & White
Coral
Navy**



**Kayleigh
47NT540A**

Boucle Tweed
with fringe detailing
Fully lined
(100% Polyester)
Patch pockets at front
Zip fly at front
Slim fit through thigh,
flared leg
Inseam 31"
Black: (60% Polyester/
50% Cotton)
Coral: (90% Polyester/
10% mixed ribbons)
Navy: (70% Polyester/
30% Wool)

**Black & White
Coral
Navy**



**Kayleigh
47NT540A**

Boucle Tweed
with fringe detailing
Fully lined
(100% Polyester)
Patch pockets at front
Zip fly at front
Slim fit through thigh,
flared leg
Inseam 31"
Black: (60% Polyester/
50% Cotton)
Coral: (90% Polyester/
10% mixed ribbons)
Navy: (70% Polyester/
30% Wool)

**Black & White
Coral
Navy**



**Regina
47NT640A**

Boucle Tweed
Fully lined
(100% Polyester)
Patch pockets at front
Short sleeve
Zip at back body
Above the knee length
(35.5" HPS)
Black: (60% Polyester/
50% Cotton)
Coral: (90% Polyester/
10% mixed ribbons)
Navy: (70% Polyester/
30% Wool)

**Black & White
Coral
Navy**



**Regina
47NT640A**

Boucle Tweed
Fully lined
(100% Polyester)
Patch pockets at front
Short sleeve
Zip at back body
Above the knee length
(35.5" HPS)
Black: (60% Polyester/
50% Cotton)
Coral: (90% Polyester/
10% mixed ribbons)
Navy: (70% Polyester/
30% Wool)

**Black & White
Coral
Navy**



**Regina
47NT640A**

Boucle Tweed
Fully lined
(100% Polyester)
Patch pockets at front
Short sleeve
Zip at back body
Above the knee length
(35.5" HPS)
Black: (60% Polyester/
50% Cotton)
Coral: (90% Polyester/
10% mixed ribbons)
Navy: (70% Polyester/
30% Wool)

**Black & White
Coral
Navy**





Wish On A Star



**Skye
47WS250A**

Washed crepe de chine
(100% silk)
Buttons at front placket
Voluminous sleeve
with cuff
Hip length
with curved hem

**47WS250B
(BEADED)**

Hand beading
on neckline

**Black
Ivory
Red**



**Skye
47WS250A**

Washed crepe de chine
(100% silk)
Buttons at front placket
Voluminous sleeve
with cuff
Hip length
with curved hem

**47WS250B
(BEADED)**

Hand beading
on neckline

**Black
Ivory
Red**



**Skye
47WS250A**

Washed crepe de chine
(100% silk)
Buttons at front placket
Voluminous sleeve
with cuff
Hip length
with curved hem

**47WS250B
(BEADED)**

Hand beading
on neckline

**Black
Ivory
Red**



**Daniella
47WS252A**

Matte jersey
(96% polyester/
4% spandex)
Embroidered yoke
Shirring under yoke
at front body
Long sleeve with cuff
Hip length

**Black
Ivory
Red**



**Daniella
47WS252A**

Matte jersey
(96% polyester/
4% spandex)
Embroidered yoke
Shirring under yoke
at front body
Long sleeve with cuff
Hip length

**Black
Ivory
Red**



**Daniella
47WS252A**

Matte jersey
(96% polyester/
4% spandex)
Embroidered yoke
Shirring under yoke
at front body
Long sleeve with cuff
Hip length

**Black
Ivory
Red**

**Makenzie
47WS350A**

Jacquard tunic sweater
(50%Viscose/
25%Polyamide/
25%Polyester)
Easy fit through body
Hip length

**Beige
Blue**



**Makenzie
47WS350A**

Jacquard tunic sweater
(50%Viscose/
25%Polyamide/
25%Polyester)
Easy fit through body
Hip length

**Beige
Blue**

**Alondra
47WS354A**

100% viscose
Slim easy fit
Long sleeve
Hip length

**Black
Ivory**



Alondra
47WS354A

100% viscose
Slim easy fit
Long sleeve
Hip length

Black
Ivory



Legacy
47WS650A

Matte jersey
(96% polyester/
4% spandex)
Pockets at hips
7/8 length bell sleeve
Easy a-line body
Above the knee length
(35.5" HPS)

Black
Ivory



Legacy
47WS650A

Matte jersey
(96% polyester/
4% spandex)
Pockets at hips
7/8 length bell sleeve
Easy a-line body
Above the knee length
(35.5" HPS)

Black
Ivory





**Maia
47WS652A**

Chiffon
(100% polyester)
Button at top of keyhole
at neck
Smocking at waist
3/4 sleeve
with smocked cuff
Asymmetrical
voluminous tier
(37" HPS at shortest point,
47" at longest point)

**Black
Ivory
Red**



**Maia
47WS652A**

Chiffon
(100% polyester)
Button at top of keyhole
at neck
Smocking at waist
3/4 sleeve
with smocked cuff
Asymmetrical
voluminous tier
(37" HPS at shortest point,
47" at longest point)

**Black
Ivory
Red**



**Maia
47WS652A**

Chiffon
(100% polyester)
Button at top of keyhole
at neck
Smocking at waist
3/4 sleeve
with smocked cuff
Asymmetrical
voluminous tier
(37" HPS at shortest point,
47" at longest point)

**Black
Ivory
Red**

Perfect Harmony



**Ariah
47YM260A**

Washed charmeuse
(100% polyester)
Long sleeve
with smocked cuff
Smocked yoke
with ruffles
Low hip length
with curved hem

**Black
Pink**



**Ariah
47YM260A**

Washed charmeuse
(100% polyester)
Long sleeve
with smocked cuff
Smocked yoke
with ruffles
Low hip length
with curved hem

**Black
Pink**



**Ariah
47YM260S**

Washed charmeuse
(100% polyester)
Long sleeve
with smocked cuff
Smocked yoke
with ruffles
Low hip length
with curved hem

**Black
Periwinkle
Raspberry**



Ariah
47YM260S

Washed charmeuse
(100% polyester)
Long sleeve
with smocked cuff
Smocked yoke
with ruffles
Low hip length
with curved hem

Black
Periwinkle
Raspberry



Ariah
47YM260S

Washed charmeuse
(100% polyester)
Long sleeve
with smocked cuff
Smocked yoke
with ruffles
Low hip length
with curved hem

Black
Periwinkle
Raspberry



Carmen
47YM262A

Washed chiffon
(70% rayon/30% silk)
Body is lined
(95% viscose/
5% spandex jersey)
Voluminous balloon sleeve
with smocked cuff
Smocking at opening
Hip length
with curved hem

Black
Pink



Carmen
47YM262A

Washed chiffon
(70% rayon/30% silk)
Body is lined
(95% viscose/
5% spandex jersey)
Voluminous balloon sleeve
with smocked cuff
Smocking at opening
Hip length
with curved hem

Black
Pink



Astrid
47YM660A

Chiffon
(100% polyester)
Smocking & ruffle at neck
Hook & eye at front neck
Elastic smocked waist
Balloon sleeve
with elastic inside
Tiered skirt
with slit at lower tiers
Ankle length at front with
High/low hem
(49" at front, 52" at back)

Black



Astrid
47YM660S

Washed charmeuse
(100% polyester)
Smocking & ruffle at neck
Hook & eye at front neck
Elastic smocked waist
Balloon sleeve
with elastic inside
Tiered skirt
with slit at lower tiers
Ankle length at front with
High/low hem
(49" at front, 52" at back)

Black
Periwinkle
Raspberry



Astrid
47YM660S

Washed charmeuse
(100% polyester)
Smocking & ruffle at neck
Hook & eye at front neck
Elastic smocked waist
Balloon sleeve
with elastic inside
Tiered skirt
with slit at lower tiers
Ankle length at front with
High/low hem
(49" at front, 52" at back)

Black
Periwinkle
Raspberry



Astrid
47YM660S

Washed charmeuse
(100% polyester)
Smocking & ruffle at neck
Hook & eye at front neck
Elastic smocked waist
Balloon sleeve
with elastic inside
Tiered skirt
with slit at lower tiers
Ankle length at front with
High/low hem
(49" at front, 52" at back)

Black
Periwinkle
Raspberry



Maren
47YM662A

Woven crepe
(55% viscose/45% rayon)
Wrap dress ties
at the side waist
Voluminous long sleeve
with smocked cuff
Swingy skirt
Above the knee length
(35.5" HPS)

Black
Pink





**Maren
47YM662A**

Woven crepe
(55% viscose/45% rayon)
Wrap dress ties
at the side waist
Voluminous long sleeve
with smocked cuff
Swingy skirt
Above the knee length
(35.5" HPS)

**Black
Pink**



This book is a presentation of a selection of Hale Bob product and is correct at time of publication.

To view the entire collection of products including updates and additions. You can view product line sheets at halebob.com by logging into the "Merchant" section of our website.

Prices and products posted in this book are current at time of publication but are subject to change.

Sales Director
East Coast
South

Sales Executive
Latin America
West Coast

Sales Executive
Southwest
Midwest

Cathy Cooley
310-963-2463
cathy@halebob.com

Isabela Peralta
323-394-1739
isabela@halebob.com

Tracy Holden
214-454-1176
tracy@halebob.com

For Marketing & Press Inquiries:

Marianna Gunther
marianna@halebob.com

HALE BOB

LOS ANGELES

