

HALE BOB

LOS ANGELES

Season 6



The Life Exotic





**Laura
46FX210A**

Washed crepe de chine
(100% silk)
Ruffle with smocking
at neckline
Deep keyhole
with buttons
Long sleeve
with smocked cuff
at wrist

**Black
Blue
Ivory**

\$148



**Laura
46FX210A**

Washed crepe de chine
(100% silk)
Ruffle with smocking
at neckline
Deep keyhole
with buttons
Long sleeve
with smocked cuff
at wrist

**Black
Blue
Ivory**

\$148



**Laura
46FX210A**

Washed crepe de chine
(100% silk)
Ruffle with smocking
at neckline
Deep keyhole
with buttons
Long sleeve
with smocked cuff
at wrist

**Black
Blue
Ivory**

\$148



**Brinley
46FX212A**

Washed chiffon
(70% rayon/30% silk)
Jersey cami lining
(95% viscose/
5% spandex)
3/4 length sleeve
with cuff
Buttons at front
Oversized scarf shirt
drapes at the sides

**Black
Blue
Ivory**

\$108



**Brinley
46FX212A**

Washed chiffon
(70% rayon/30% silk)
Jersey cami lining
(95% viscose/
5% spandex)
3/4 length sleeve
with cuff
Buttons at front
Oversized scarf shirt
drapes at the sides

**Black
Blue
Ivory**

\$108



**Brinley
46FX212A**

Washed chiffon
(70% rayon/30% silk)
Jersey cami lining
(95% viscose/
5% spandex)
3/4 length sleeve
with cuff
Buttons at front
Oversized scarf shirt
drapes at the sides

**Black
Blue
Ivory**

\$108



**Frances
46FX214A**

Matte jersey
(96% polyester/
4% spandex)
V-neck with smocked
yoke detail
Balloon sleeve
with smocked cuff
Slim easy fit
through body
High hip length
with curved hem

**Black
Blue
Ivory**

\$68



**Frances
46FX214A**

Matte jersey
(96% polyester/
4% spandex)
V-neck with smocked
yoke detail
Balloon sleeve
with smocked cuff
Slim easy fit through body
High hip length
with curved hem

**Black
Blue
Ivory**

\$68



Frances
46FX214A

Matte jersey
(96% polyester/
4% spandex)
V-neck with smocked
yoke detail
Balloon sleeve
with smocked cuff
Slim easy fit through body
High hip length
with curved hem

Black
Blue
Ivory

\$68



Michelle
46FX510A

Stretch canvas
(97%cotton/3%spandex)
High waist (12" rise)
Functional button/fly
Pockets at hips & back
Flared wide leg
Long length with invisible
hem to adjust length
33" inseam

Black
Blue
Ivory

\$98



Michelle
46FX510A

Stretch canvas
(97%cotton/3%spandex)
High waist (12" rise)
Functional button/fly
Pockets at hips & back
Flared wide leg
Long length with invisible
hem to adjust length
33" inseam

Black
Blue
Ivory

\$98



Michelle
46FX510A

Stretch canvas
(97%cotton/3%spandex)
High waist (12" rise)
Functional button/fly
Pockets at hips & back
Flared wide leg
Long length with invisible
hem to adjust length
33" inseam

Black
Blue
Ivory

\$98



Heidi
46FX610A

Matte jersey
(96% polyester/
4% spandex)
Mesh lining
(95% nylon/8% spandex)
Keyhole at back neck
with button
Slim easy fit
Above the knee length
(35.5" HPS)

Black
Blue
Ivory

\$88



Heidi
46FX610A

Matte jersey
(96% polyester/
4% spandex)
Mesh lining
(95% nylon/8% spandex)
Keyhole at back neck
with button
Slim easy fit
Above the knee length
(35.5" HPS)

Black
Blue
Ivory

\$88



Heidi
46FX610A

Matte jersey
(96% polyester/
4% spandex)
Mesh lining
(95% nylon/8% spandex)
Keyhole at back neck
with button
Slim easy fit
Above the knee length
(35.5" HPS)

Black
Blue
Ivory

\$88





**Serena
46FX612A**

Washed charmeuse
(100% Polyester)
Smocked neckline &
waistband
Flutter Sleeve,
elbow length
High-low hem
(35" at front,
57" at back)

**Black
Blue**

\$118



**Serena
46FX612A**

Washed charmeuse
(100% Polyester)
Smocked neckline &
waistband
Flutter Sleeve,
elbow length
High-low hem
(35" at front,
57" at back)

**Black
Blue**

\$118



**Serena
46FX612S**

Washed charmeuse
(100% Polyester)
Smocked neckline &
waistband
Flutter Sleeve,
elbow length
High-low hem
(35" at front,
57" at back)

**Black
Rose**

\$108



**Serena
46FX612S**

Washed charmeuse
(100% Polyester)
Smocked neckline &
waistband
Flutter Sleeve,
elbow length
High-low hem
(35" at front,
57" at back)

**Black
Rose**

\$108

Rylie
46FX614A - SHORT

Matte jersey
(96% polyester/
4% spandex)
Mesh lining
(95% nylon/8% spandex)
Pleat at CF under placket
Pockets at hips
3/4 Length sleeve
with cuff
Deep hem added
for length
Above the knee
(35" HPS)

Black
Blue
Ivory

\$98



Rylie
46FX614A - SHORT

Matte jersey
(96% polyester/
4% spandex)
Mesh lining
(95% nylon/8% spandex)
Pleat at CF under placket
Pockets at hips
3/4 Length sleeve
with cuff
Deep hem added
for length
Above the knee
(35" HPS)

Black
Blue
Ivory

\$98



Rylie
46FX614A - SHORT

Matte jersey
(96% polyester/
4% spandex)
Mesh lining
(95% nylon/8% spandex)
Pleat at CF under placket
Pockets at hips
3/4 Length sleeve
with cuff
Deep hem added
for length
Above the knee
(35" HPS)

Black
Blue
Ivory

\$98





**Rylie
46FX614D - MIDI**

Matte jersey
(96% polyester/
4% spandex)
Mesh lining
(95% nylon/8% spandex)
Pleat at CF under placket
Pockets at hips
3/4 Length sleeve
with cuff
Deep hem added
for length
Below the knee
(41" HPS)

**Black
Blue
Ivory**

\$108



**Rylie
46FX614D - MIDI**

Matte jersey
(96% polyester/
4% spandex)
Mesh lining
(95% nylon/8% spandex)
Pleat at CF under placket
Pockets at hips
3/4 Length sleeve
with cuff
Deep hem added
for length
Below the knee
(41" HPS)

**Black
Blue
Ivory**

\$108



**Rylie
46FX614D - MIDI**

Matte jersey
(96% polyester/
4% spandex)
Mesh lining
(95% nylon/8% spandex)
Pleat at CF under placket
Pockets at hips
3/4 Length sleeve
with cuff
Deep hem added
for length
Below the knee
(41" HPS)

**Black
Blue
Ivory**

\$108

**Samara
46FX616A - SHORT**

Lightweight washed linen
(100% linen)
Body is lined
(100% viscose)
Buttons at front body:
only the top and lower
skirt buttons are
functional.
Invisible zipper at back
Puff sleeve with elastic
Slim fit through body
Slim top skirt with ruffle
Tie belt at waist
Above the knee
(35" HPS)

**Black
Blue
Ivory**

\$158

*Note: In production,
the eyelet trim will
be removed from
the front placket
and remain
around the
neck.



**Samara
46FX616A - SHORT**

Lightweight washed linen
(100% linen)
Body is lined
(100% viscose)
Buttons at front body:
only the top and lower
skirt buttons are
functional.
Invisible zipper at back
Puff sleeve with elastic
Slim fit through body
Slim top skirt with ruffle
Tie belt at waist
Above the knee
(35" HPS)

**Black
Blue
Ivory**

\$158

*Note: In production, the
eyelet trim will be
removed from the front
placket and remain
around the neck.



**Samara
46FX616A - SHORT**

Lightweight washed linen
(100% linen)
Body is lined
(100% viscose)
Buttons at front body:
only the top and lower
skirt buttons are
functional.
Invisible zipper at back
Puff sleeve with elastic
Slim fit through body
Slim top skirt with ruffle
Tie belt at waist
Above the knee
(35" HPS)

**Black
Blue
Ivory**

\$158

*Note: In production,
the eyelet trim will
be removed from
the front placket
and remain
around the
neck.





Samara
46FX616M - MAXI

Lightweight washed linen
(100% linen)
Body is lined
(100% viscose)
Buttons at front body:
only the top and lower
skirt buttons are
functional.
Invisible zipper at back
Puff sleeve with elastic
Slim fit through body
Slim top skirt with ruffle
Tie belt at waist
Ankle length:
(51" HPS)

Black
Blue
Ivory

\$188

*Note: Samples are too long, they will be ankle length in production.

***The eyelet trim will be removed from the front placket and remain around the neck.



**Samara
46FX616M - MAXI**

Lightweight washed linen
(100% linen)
Body is lined
(100% viscose)
Buttons at front body:
only the top and lower
skirt buttons are
functional.
Invisible zipper at back
Puff sleeve with elastic
Slim fit through body
Slim top skirt with ruffle
Tie belt at waist
Ankle length:
(51" HPS)

**Black
Blue
Ivory**

\$188

*Note: Samples are too long, they will be ankle length in production.

***The eyelet trim will be removed from the front placket and remain around the neck.



**Samara
46FX616M - MAXI**

Lightweight washed linen
(100% linen)
Body is lined
(100% viscose)
Buttons at front body:
only the top and lower
skirt buttons are
functional.
Invisible zipper at back
Puff sleeve with elastic
Slim fit through body
Slim top skirt with ruffle
Tie belt at waist
Ankle length:
(51" HPS)

**Black
Blue
Ivory**

\$188

*Note: Samples are too long, they will be ankle length in production.

***The eyelet trim will be removed from the front placket and remain around the neck.





Secret Garden

Royalty
46GD220A

Embroidered crinkle gauze
(100% Viscose)
Body is lined
(100% viscose challis)

Black
Ivory

\$108



Royalty
46GD220A

Embroidered crinkle gauze
(100% Viscose)
Body is lined
(100% viscose challis)

Black
Ivory

\$108



Selah
46GD222A

Washed crepe de chine
(100% silk)
Buttons at front placket
Voluminous sleeve
with cuff
Low hip length
with slits at sides

Black
Ivory

\$148





**Selah
46GD222A**

Washed crepe de chine
(100% silk)
Buttons at front placket
Voluminous sleeve
with cuff
Low hip length
with slits at sides

**Black
Ivory**

\$148



**Annalise
46GD224A**

Matte jersey
(96% polyester/
4% spandex)
Mesh lining
(95% nylon/8% spandex)
Keyhole at back neck
with button
Slim easy fit
Hip length

**Black
Ivory**

\$58



**Annalise
46GD224A**

Matte jersey
(96% polyester/
4% spandex)
Mesh lining
(95% nylon/8% spandex)
Keyhole at back neck
with button
Slim easy fit
Hip length

**Black
Ivory**

\$58



**Madeleine
46GD226A**

Embroidered linen
(100% linen)
Stretch satin lining
(97% polyester/
3% spandex)
Hook & eye closure
at front
Adjustable strap
at back waist

**Black
Ivory**

\$78



**Madeleine
46GD226A**

Embroidered linen
(100% linen)
Stretch satin lining
(97% polyester/
3% spandex)
Hook & eye closure
at front
Adjustable strap
at back waist

**Black
Ivory**

\$78



**Camryn
46GD620A**

Embroidered slub voile
(80% Rayon/20% Linen)
Body is lined
(100% viscose challis)
Kimono sleeve
Oversized voluminous fit
Above the knee
(35.5" HPS)

**Black
Ivory**

\$148



**Camryn
46GD620A**

Embroidered slub voile
(80% Rayon/20% Linen)
Body is lined
(100% viscose challis)
Kimono sleeve
Oversized voluminous fit
Above the knee
(35.5" HPS)

**Black
Ivory**

\$148



Melissa
46GD622A - SHORT

Lightweight washed linen
(100% linen)
Body is lined
(100% viscose)
Buttons at front body:
only the top and lower
skirt buttons are
functional.
Invisible zipper at back
7/8 length sleeve
with elastic
Slim fit through body
Slim top skirt with ruffle
Self covered belt at waist
Above the knee
(35" HPS)

Black
Ivory

\$178



Melissa
46GD622A - SHORT

Lightweight washed linen
(100% linen)
Body is lined
(100% viscose)
Buttons at front body:
only the top and lower
skirt buttons are
functional.
Invisible zipper at back
7/8 length sleeve
with elastic
Slim fit through body
Slim top skirt with ruffle
Self covered belt at waist
Above the knee
(35" HPS)

Black
Ivory

\$178



**Melissa
46GD622M - MAXI**

Lightweight washed linen
(100% linen)
Body is lined
(100% viscose)
Buttons at front body:
only the top and lower
skirt buttons are
functional.
Invisible zipper at back
7/8 length sleeve
with elastic
Slim fit through body
Slim top skirt with ruffle
Self covered belt at waist
Ankle length:
(51" HPS)

**Black
Ivory**

\$228

*Note: Samples are too long, they will be ankle length in production.



**Melissa
46GD622M - MAXI**

Lightweight washed linen
(100% linen)
Body is lined
(100% viscose)
Buttons at front body:
only the top and lower
skirt buttons are
functional.
Invisible zipper at back
7/8 length sleeve
with elastic
Slim fit through body
Slim top skirt with ruffle
Self covered belt at waist
Ankle length:
(51" HPS)

**Black
Ivory**

\$228

*Note: Samples are too long, they will be ankle length in production.



Nayeli
46GD624A - SHORT

Matte jersey
(96% polyester/
4% spandex)
Mesh lining
(92% nylon/8% spandex)
Slim fit through bodice
A-line skirt with pleat
at waist
3/4 balloon sleeve
with cuff
Above the knee
(35.5" HPS)

Black
Ivory

\$98

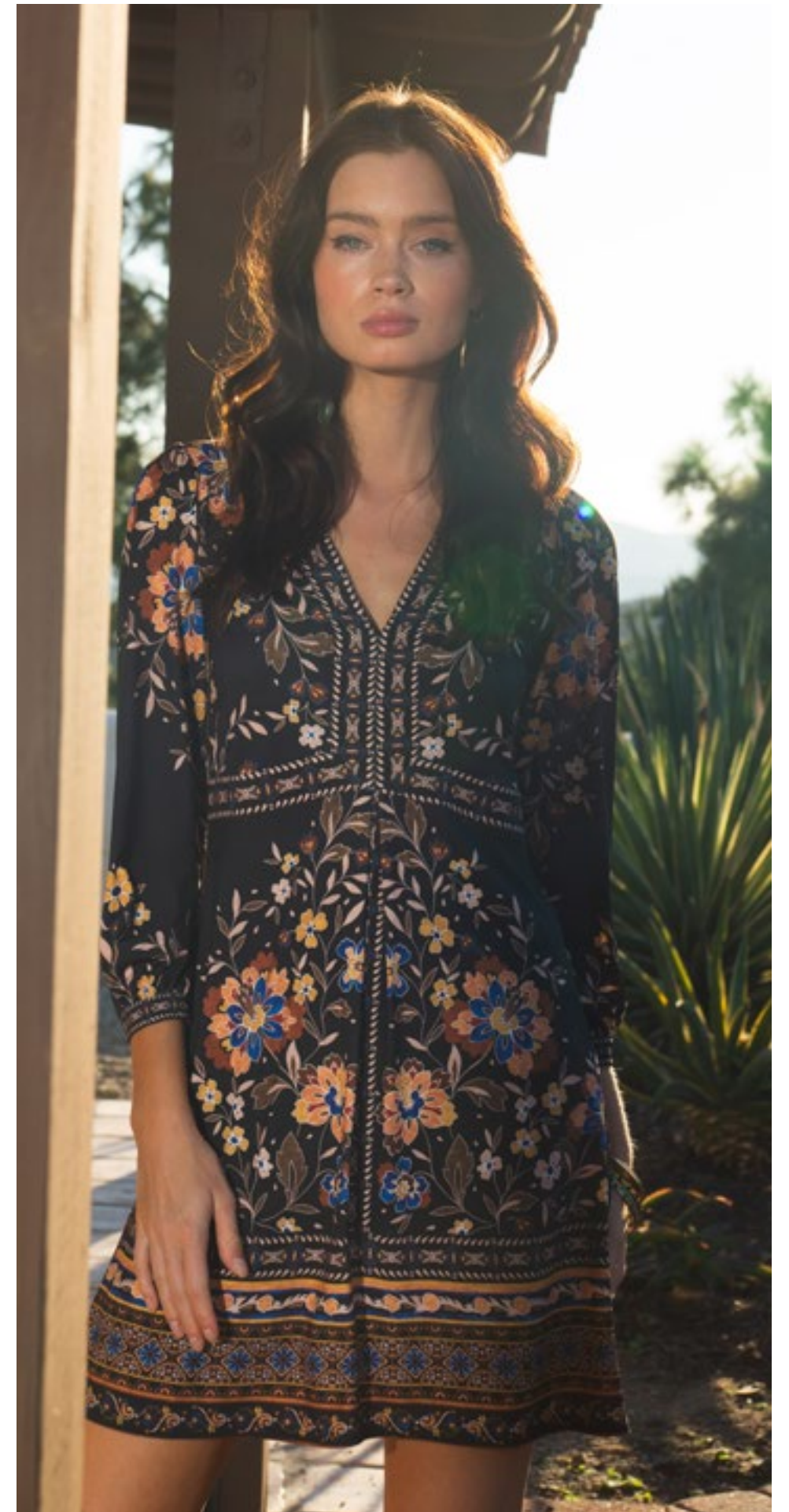


Nayeli
46GD624A - SHORT

Matte jersey
(96% polyester/
4% spandex)
Mesh lining
(92% nylon/8% spandex)
Slim fit through bodice
A-line skirt with pleat
at waist
3/4 balloon sleeve
with cuff
Above the knee
(35.5" HPS)

Black
Ivory

\$98





Nayeli
46GD624D - MIDI

Matte jersey
(96% polyester/
4% spandex)
Mesh lining
(92% nylon/8% spandex)
Slim fit through bodice
A-line skirt with pleat
at waist
3/4 balloon sleeve
with cuff
Below the knee
(41" HPS)

Black
Ivory

\$108



Nayeli
46GD624D - MIDI

Matte jersey
(96% polyester/
4% spandex)
Mesh lining
(92% nylon/8% spandex)
Slim fit through bodice
A-line skirt with pleat
at waist
3/4 balloon sleeve
with cuff
Below the knee
(41" HPS)

Black
Ivory

\$108





Limited
Edition
Denim



**Blake
ODEN510B**

Stretch denim
LTB/NAV content:
80% cotton/
18% polyester/
2% spandex
BLK/WHT content:
96% cotton/
3% Polyester/1% spandex
High waist (12" rise)
Wide leg with flare
Stitched pin tuck
at front & back
Side pockets at front
Patch pockets at back
33" inseam
with invisible hem
Deep hem
to adjust length

**Black
Light blue wash
Dark blue wash
White**

\$88



**Blake
ODEN510B**

Stretch denim
LTB/NAV content:
80% cotton/
18% polyester/
2% spandex
BLK/WHT content:
96% cotton/
3% Polyester/1% spandex
High waist (12" rise)
Wide leg with flare
Stitched pin tuck
at front & back
Side pockets at front
Patch pockets at back
33" inseam
with invisible hem
Deep hem
to adjust length

**Black
Light blue wash
Dark blue wash
White**

\$88



**Blake
ODEN510B**

Stretch denim
LTB/NAV content:
80% cotton/
18% polyester/
2% spandex
BLK/WHT content:
96% cotton/
3% Polyester/1% spandex
High waist (12" rise)
Wide leg with flare
Stitched pin tuck
at front & back
Side pockets at front
Patch pockets at back
33" inseam
with invisible hem
Deep hem
to adjust length

**Black
Light blue wash
Dark blue wash
White**

\$88

Blake
ODEN510B

Stretch denim
LTB/NAV content:
80% cotton/
18% polyester/
2% spandex
BLK/WHT content:
96% cotton/
3% Polyester/1% spandex
High waist (12" rise)
Wide leg with flare
Stitched pin tuck
at front & back
Side pockets at front
Patch pockets at back
33" inseam
with invisible hem
Deep hem
to adjust length

Black
Light blue wash
Dark blue wash
White

\$88



Jenna
ODEN512A

Stretch denim
LTB/NAV content:
80% cotton/
18% polyester/2% spandex
BLK/WHT content:
96% cotton/
3% Polyester/1% spandex
High waist (11.5" rise)
Patch pockets
at front & back
Straight leg
with slight flare
33" inseam
with invisible hem
Deep hem
to adjust length

Black
Light blue wash
Dark blue wash
White

\$88





**Jenna
ODEN512A**

Stretch denim
LTB/NAV content:
80% cotton/
18% polyester/2% spandex
BLK/WHT content:
96% cotton/
3% Polyester/1% spandex
High waist (11.5" rise)
Patch pockets
at front & back
Straight leg
with slight flare
33" inseam
with invisible hem
Deep hem
to adjust length

**Black
Light blue wash
Dark blue wash
White**

\$88



**Jenna
ODEN512A**

Stretch denim
LTB/NAV content:
80% cotton/
18% polyester/2% spandex
BLK/WHT content:
96% cotton/
3% Polyester/1% spandex
High waist (11.5" rise)
Patch pockets
at front & back
Straight leg
with slight flare
33" inseam
with invisible hem
Deep hem
to adjust length

**Black
Light blue wash
Dark blue wash
White**

\$88



**Jenna
ODEN512A**

Stretch denim
LTB/NAV content:
80% cotton/
18% polyester/2% spandex
BLK/WHT content:
96% cotton/
3% Polyester/1% spandex
High waist (11.5" rise)
Patch pockets
at front & back
Straight leg
with slight flare
33" inseam
with invisible hem
Deep hem
to adjust length

**Black
Light blue wash
Dark blue wash
White**

\$88



Petal



Flurry



**Raelyn
46PT230A**

Washed crepe de chine
(100% silk)
Ruffle with tie at neckline
Deep keyhole
with buttons
Long sleeve
with smocked cuff
at wrist

**Blue
Pink**

\$148



**Raelyn
46PT230A**

Washed crepe de chine
(100% silk)
Ruffle with tie at neckline
Deep keyhole
with buttons
Long sleeve
with smocked cuff
at wrist

**Blue
Pink**

\$148



**Esme
46PT232A**

Washed challis
(100% viscose)
Buttons at front placket
Flutter sleeve with trim
Pintuck pleats
at front & back
Swingy fit, hip length

**Blue
Pink**

\$68

Esme
46PT232A

Washed challis
(100% viscose)
Buttons at front placket
Flutter sleeve with trim
Pintuck pleats
at front & back
Swingy fit, hip length

Blue
Pink

\$68



Leighton
46PT234A

Matte jersey
(96% polyester/
4% spandex)
3/4 sleeve with cuff
Slim fit through body
Hip length

Blue

\$68



Everlee
46PT530A

Matte jersey
(96% polyester/
4% spandex)
Elastic at waist
High waist (9.25" rise)
Slim fit with flared leg
Full length (32" inseam)

Blue

\$78



**Lilliana
46PT330A**

Jacquard cashmere
feel sweater (45% Nylon/
30% Acrylic/20% Viscose/
5% Wool)
Easy fit through body
Hip length

**Grey
Pink**

\$48



**Lilliana
46PT330A**

Jacquard cashmere
feel sweater (45% Nylon/
30% Acrylic/20% Viscose/
5% Wool)
Easy fit through body
Hip length

**Grey
Pink**

\$48

Mabel
46PT630A

Matte jersey
(96% polyester/
4% spandex)
Easy/slim fit
through bodice
3/4 sleeve with tier
Swingy tiered skirt
Above the knee length
(35.5" HPS)

Blue
Pink

\$98



Mabel
46PT630A

Matte jersey
(96% polyester/
4% spandex)
Easy/slim fit
through bodice
3/4 sleeve with tier
Swingy tiered skirt
Above the knee length
(35.5" HPS)

Blue
Pink

\$98





**Izabella
46PT632A**

Chiffon
(100% polyester)
Ruffle along front neckline
Flutter sleeve
with ruffle
Slim fit at waist
Invisible zip at back
Asymmetrical voluminous
tier (37" HPS at shortest
point, 47" at longest
point)

**Blue
Pink**

\$118

**Izabella
46PT632A**

Chiffon
(100% polyester)
Ruffle along front neckline
Flutter sleeve
with ruffle
Slim fit at waist
Invisible zip at back
Asymmetrical voluminous
tier (37" HPS at shortest
point, 47" at longest
point)

**Blue
Pink**

\$118



Homecoming





**Danna
46RH240A**

Space Dyed Knit
(90% Viscose/
10% Polyamide)
Balloon sleeve
with fitted band
Slim body, hip length

**Blue
Brown**

\$58



**Danna
46RH240A**

Space Dyed Knit
(90% Viscose/
10% Polyamide)
Balloon sleeve
with fitted band
Slim body, hip length

**Blue
Brown**

\$58



**Rosemary
46RH242A**

Space Dyed Knit
(90% Viscose/
10% Polyamide)
Partial placket
with buttons
Long flared sleeve
Slim body, hip length

**Blue
Brown**

\$68



**Rosemary
46RH242A**

Space Dyed Knit
(90% Viscose/
10% Polyamide)
Partial placket
with buttons
Long flared sleeve
Slim body, hip length

**Blue
Brown**

\$68



**Makenna
46RH540A**

Space Dyed Knit
(90% Viscose/
10% Polyamide)
Elastic at waist
High waist
Slim fit with flared leg
Full length
(31" inseam)

**Blue
Brown**

\$78



**Makenna
46RH540A**

Space Dyed Knit
(90% Viscose/
10% Polyamide)
Elastic at waist
High waist
Slim fit with flared leg
Full length
(31" inseam)

**Blue
Brown**

\$78



Bathing Beauty





**Demi
46UB250A**

Washed charmeuse
(100% polyester)
Long sleeve
with smocked cuff
Pleated ruffles throughout
Tie at front neck
with buttons at keyhole
Hip length
with curved hem

Blue

\$88



**Demi
46UB250S**

Washed charmeuse
(100% polyester)
Long sleeve
with smocked cuff
Pleated ruffles throughout
Tie at front neck
with buttons at keyhole
Hip length
with curved hem

**Black
Champagne
Indigo
Rose**

\$78



**Demi
46UB250S**

Washed charmeuse
(100% polyester)
Long sleeve
with smocked cuff
Pleated ruffles throughout
Tie at front neck
with buttons at keyhole
Hip length
with curved hem

**Black
Champagne
Indigo
Rose**

\$78



**Demi
46UB250S**

Washed charmeuse
(100% polyester)
Long sleeve
with smocked cuff
Pleated ruffles throughout
Tie at front neck
with buttons at keyhole
Hip length
with curved hem

**Black
Champagne
Indigo
Rose**

\$78



**Demi
46UB250S**

Washed charmeuse
(100% polyester)
Long sleeve
with smocked cuff
Pleated ruffles throughout
Tie at front neck
with buttons at keyhole
Hip length
with curved hem

**Black
Champagne
Indigo
Rose**

\$78



**Aitana
46UB252A**

Washed charmeuse
(100% polyester)
Pleated double tier sleeve
Pleated ruffles
at neck/yoke
Tie at front neck
Hip length
with curved hem

Blue

\$58

**Aitana
46UB252S**

Washed charmeuse
(100% polyester)
Pleated double tier sleeve
Pleated ruffles
at neck/yoke
Tie at front neck
Hip length
with curved hem

**Black
Champagne
Indigo
Rose**

\$48



**Aitana
46UB252S**

Washed charmeuse
(100% polyester)
Pleated double tier sleeve
Pleated ruffles
at neck/yoke
Tie at front neck
Hip length
with curved hem

**Black
Champagne
Indigo
Rose**

\$48



**Aitana
46UB252S**

Washed charmeuse
(100% polyester)
Pleated double tier sleeve
Pleated ruffles
at neck/yoke
Tie at front neck
Hip length
with curved hem

**Black
Champagne
Indigo
Rose**

\$48





Aitana
46UB252S

Washed charmeuse
(100% polyester)
Pleated double tier sleeve
Pleated ruffles
at neck/yoke
Tie at front neck
Hip length
with curved hem

Black
Champagne
Indigo
Rose

\$48



Charli
46UB350A

Tie-dyed cashmere feel
sweater (45% Nylon/30%
Acrylic/20% Viscose/
5% Wool)
Easy fit through body
Hip length

Blue

\$58



Ainsley
46UB650A

Chiffon
(100% polyester)
V-neck with
flounce ruffle
Flutter sleeve
Tiered flounce skirt
Slit at front leg
starting at mid-thigh
Maxi length
(58" HPS)

Blue
Orange

\$128



**Ainsley
46UB650A**

Chiffon
(100% polyester)
V-neck with
flounce ruffle
Flutter sleeve
Tiered flounce skirt
Slit at front leg
starting at mid-thigh
Maxi length
(58" HPS)

**Blue
Orange**

\$128



**Ainsley
46UB650S**

Washed charmeuse
(100% polyester)
V-neck with
flounce ruffle
Flutter sleeve
Tiered flounce skirt
Slit at front leg
starting at mid-thigh
Maxi length
(58" HPS)

**Black
Champagne
Indigo
Rose**

\$128



**Ainsley
46UB650S**

Washed charmeuse
(100% polyester)
V-neck with
flounce ruffle
Flutter sleeve
Tiered flounce skirt
Slit at front leg
starting at mid-thigh
Maxi length
(58" HPS)

**Black
Champagne
Indigo
Rose**

\$128



**Ainsley
46UB650S**

Washed charmeuse
(100% polyester)
V-neck with
flounce ruffle
Flutter sleeve
Tiered flounce skirt
Slit at front leg
starting at mid-thigh
Maxi length
(58" HPS)

**Black
Champagne
Indigo
Rose**

\$128



**Ainsley
46UB650S**

Washed charmeuse
(100% polyester)
V-neck with
flounce ruffle
Flutter sleeve
Tiered flounce skirt
Slit at front leg
starting at mid-thigh
Maxi length
(58" HPS)

**Black
Champagne
Indigo
Rose**

\$128



**Brynn
46UB652A**

Heavyweight jersey
(95% viscose/
5% spandex)
Dropped shoulder/
cap sleeve
Slim fit body
with shirring at
center front & back
through waist
Swingy voluminous skirt
with gussets
Ankle length:
(51" HPS)

**Blue
Orange**

\$118

*Note: Samples are too
long, they will be ankle
length in production.

Giselle
46UB654A

Washed charmeuse
(100% polyester)
Pintucked yoke at front
Ruffle drape sleeve
Elastic at side
body & back waist
Pockets at hips
Voluminous tier at hem
Ankle length:
(51" HPS)

Blue

\$118

*Note: Samples are too
long, they will be ankle
length in production.



This book is a presentation of a selection of Hale Bob product and is correct at time of publication.

To view the entire collection of products including updates and additions. You can view product line sheets at halebob.com by logging into the "Merchant" section of our website.

Prices and products posted in this book are current at time of publication but are subject to change.

Sales Director
East Coast
South

Sales Executive
Latin America
West Coast

Sales Executive
Southwest
Midwest

Cathy Cooley
310-963-2463
cathy@halebob.com

Isabela Peralta
323-394-1739
isabela@halebob.com

Tracy Holden
214-454-1176
tracy@halebob.com

For Marketing & Press Inquiries:

Marianna Gunther
marianna@halebob.com

HALE BOB

LOS ANGELES

