

# HALE BOB

LOS ANGELES

Season 6





# The Life Exotic







**Laura  
46FX210A**

Washed crepe de chine  
(100% silk)  
Ruffle with smocking  
at neckline  
Deep keyhole  
with buttons  
Long sleeve  
with smocked cuff  
at wrist

**Black  
Blue  
Ivory**



**Laura  
46FX210A**

Washed crepe de chine  
(100% silk)  
Ruffle with smocking  
at neckline  
Deep keyhole  
with buttons  
Long sleeve  
with smocked cuff  
at wrist

**Black  
Blue  
Ivory**



**Laura  
46FX210A**

Washed crepe de chine  
(100% silk)  
Ruffle with smocking  
at neckline  
Deep keyhole  
with buttons  
Long sleeve  
with smocked cuff  
at wrist

**Black  
Blue  
Ivory**





**Brinley  
46FX212A**

Washed chiffon  
(70% rayon/30% silk)  
Jersey cami lining  
(95% viscose/  
5% spandex)  
3/4 length sleeve  
with cuff  
Buttons at front  
Oversized scarf shirt  
drapes at the sides

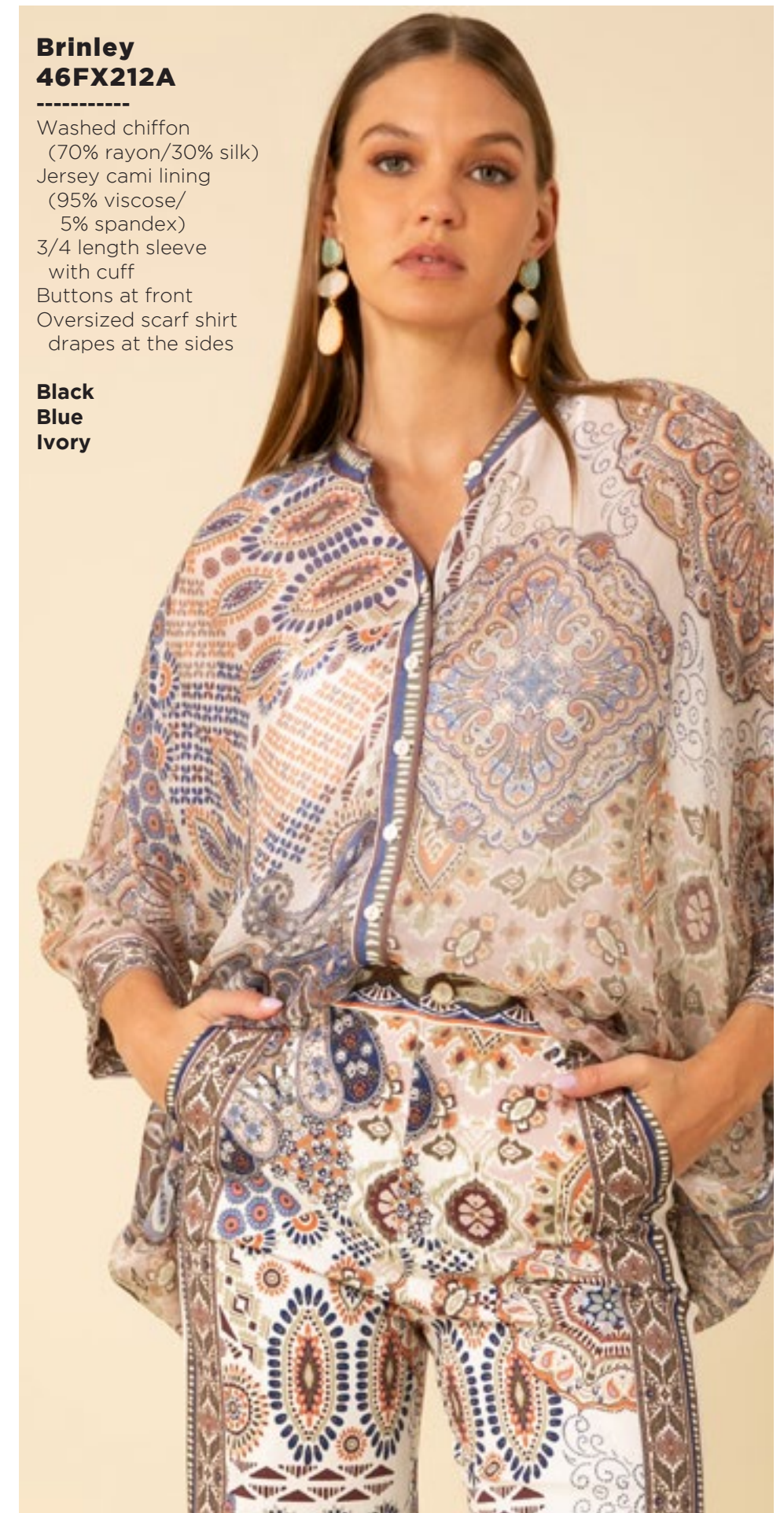
**Black  
Blue  
Ivory**



**Brinley  
46FX212A**

Washed chiffon  
(70% rayon/30% silk)  
Jersey cami lining  
(95% viscose/  
5% spandex)  
3/4 length sleeve  
with cuff  
Buttons at front  
Oversized scarf shirt  
drapes at the sides

**Black  
Blue  
Ivory**



**Brinley  
46FX212A**

Washed chiffon  
(70% rayon/30% silk)  
Jersey cami lining  
(95% viscose/  
5% spandex)  
3/4 length sleeve  
with cuff  
Buttons at front  
Oversized scarf shirt  
drapes at the sides

**Black  
Blue  
Ivory**





**Frances  
46FX214A**  
-----

Matte jersey  
(96% polyester/  
4% spandex)  
V-neck with smocked  
yoke detail  
Balloon sleeve  
with smocked cuff  
Slim easy fit  
through body  
High hip length  
with curved hem

**Black  
Blue  
Ivory**



**Frances  
46FX214A**  
-----

Matte jersey  
(96% polyester/  
4% spandex)  
V-neck with smocked  
yoke detail  
Balloon sleeve  
with smocked cuff  
Slim easy fit through body  
High hip length  
with curved hem

**Black  
Blue  
Ivory**





**Frances**  
**46FX214A**

-----  
Matte jersey  
(96% polyester/  
4% spandex)  
V-neck with smocked  
yoke detail  
Balloon sleeve  
with smocked cuff  
Slim easy fit through body  
High hip length  
with curved hem

**Black**  
**Blue**  
**Ivory**



**Michelle**  
**46FX510A**

-----  
Stretch canvas  
(97%cotton/3%spandex)  
High waist (12" rise)  
Functional button/fly  
Pockets at hips & back  
Flared wide leg  
Long length with invisible  
hem to adjust length  
33" inseam

**Black**  
**Blue**  
**Ivory**



**Michelle**  
**46FX510A**

-----  
Stretch canvas  
(97%cotton/3%spandex)  
High waist (12" rise)  
Functional button/fly  
Pockets at hips & back  
Flared wide leg  
Long length with invisible  
hem to adjust length  
33" inseam

**Black**  
**Blue**  
**Ivory**





**Michelle**  
**46FX510A**

-----  
Stretch canvas  
(97%cotton/3%spandex)  
High waist (12" rise)  
Functional button/fly  
Pockets at hips & back  
Flared wide leg  
Long length with invisible  
hem to adjust length  
33" inseam

**Black**  
**Blue**  
**Ivory**





**Heidi**  
**46FX610A**

Matte jersey  
(96% polyester/  
4% spandex)  
Mesh lining  
(95% nylon/8% spandex)  
Keyhole at back neck  
with button  
Slim easy fit  
Above the knee length  
(35.5" HPS)

**Black**  
**Blue**  
**Ivory**



**Heidi**  
**46FX610A**

Matte jersey  
(96% polyester/  
4% spandex)  
Mesh lining  
(95% nylon/8% spandex)  
Keyhole at back neck  
with button  
Slim easy fit  
Above the knee length  
(35.5" HPS)

**Black**  
**Blue**  
**Ivory**



**Heidi**  
**46FX610A**

Matte jersey  
(96% polyester/  
4% spandex)  
Mesh lining  
(95% nylon/8% spandex)  
Keyhole at back neck  
with button  
Slim easy fit  
Above the knee length  
(35.5" HPS)

**Black**  
**Blue**  
**Ivory**







**Serena  
46FX612A**

-----  
Washed charmeuse  
(100% Polyester)  
Smocked neckline &  
waistband  
Flutter Sleeve,  
elbow length  
High-low hem  
(35" at front,  
57" at back)

**Black  
Blue**



**Serena  
46FX612A**

-----  
Washed charmeuse  
(100% Polyester)  
Smocked neckline &  
waistband  
Flutter Sleeve,  
elbow length  
High-low hem  
(35" at front,  
57" at back)

**Black  
Blue**



**Serena  
46FX612S**

-----  
Washed charmeuse  
(100% Polyester)  
Smocked neckline &  
waistband  
Flutter Sleeve,  
elbow length  
High-low hem  
(35" at front,  
57" at back)

**Black  
Rose**



**Serena  
46FX612S**

-----  
Washed charmeuse  
(100% Polyester)  
Smocked neckline &  
waistband  
Flutter Sleeve,  
elbow length  
High-low hem  
(35" at front,  
57" at back)

**Black  
Rose**





**Rylie**  
**46FX614A - SHORT**

Matte jersey  
(96% polyester/  
4% spandex)  
Mesh lining  
(95% nylon/8% spandex)  
Pleat at CF under placket  
Pockets at hips  
3/4 Length sleeve  
with cuff  
Deep hem added  
for length  
Above the knee  
(35" HPS)

**Black**  
**Blue**  
**Ivory**



**Rylie**  
**46FX614A - SHORT**

Matte jersey  
(96% polyester/  
4% spandex)  
Mesh lining  
(95% nylon/8% spandex)  
Pleat at CF under placket  
Pockets at hips  
3/4 Length sleeve  
with cuff  
Deep hem added  
for length  
Above the knee  
(35" HPS)

**Black**  
**Blue**  
**Ivory**



**Rylie**  
**46FX614A - SHORT**

Matte jersey  
(96% polyester/  
4% spandex)  
Mesh lining  
(95% nylon/8% spandex)  
Pleat at CF under placket  
Pockets at hips  
3/4 Length sleeve  
with cuff  
Deep hem added  
for length  
Above the knee  
(35" HPS)

**Black**  
**Blue**  
**Ivory**







**Rylie  
46FX614D - MIDI**

Matte jersey  
(96% polyester/  
4% spandex)  
Mesh lining  
(95% nylon/8% spandex)  
Pleat at CF under placket  
Pockets at hips  
3/4 Length sleeve  
with cuff  
Deep hem added  
for length  
Below the knee  
(41" HPS)

**Black  
Blue  
Ivory**



**Rylie  
46FX614D - MIDI**

Matte jersey  
(96% polyester/  
4% spandex)  
Mesh lining  
(95% nylon/8% spandex)  
Pleat at CF under placket  
Pockets at hips  
3/4 Length sleeve  
with cuff  
Deep hem added  
for length  
Below the knee  
(41" HPS)

**Black  
Blue  
Ivory**



**Rylie  
46FX614D - MIDI**

Matte jersey  
(96% polyester/  
4% spandex)  
Mesh lining  
(95% nylon/8% spandex)  
Pleat at CF under placket  
Pockets at hips  
3/4 Length sleeve  
with cuff  
Deep hem added  
for length  
Below the knee  
(41" HPS)

**Black  
Blue  
Ivory**



**Samara**  
**46FX616A - SHORT**

Lightweight washed linen  
(100% linen)  
Body is lined  
(100% viscose)  
Buttons at front body:  
only the top and lower  
skirt buttons are  
functional.  
Invisible zipper at back  
Puff sleeve with elastic  
Slim fit through body  
Slim top skirt with ruffle  
Tie belt at waist  
Above the knee  
(35" HPS)

**Black**  
**Blue**  
**Ivory**

\*Note: In production,  
the eyelet trim will  
be removed from  
the front placket  
and remain  
around the  
neck.



**Samara**  
**46FX616A - SHORT**

Lightweight washed linen  
(100% linen)  
Body is lined  
(100% viscose)  
Buttons at front body:  
only the top and lower  
skirt buttons are  
functional.  
Invisible zipper at back  
Puff sleeve with elastic  
Slim fit through body  
Slim top skirt with ruffle  
Tie belt at waist  
Above the knee  
(35" HPS)

**Black**  
**Blue**  
**Ivory**

\*Note: In production, the  
eyelet trim will be  
removed from the front  
placket and remain  
around the neck.



**Samara**  
**46FX616A - SHORT**

Lightweight washed linen  
(100% linen)  
Body is lined  
(100% viscose)  
Buttons at front body:  
only the top and lower  
skirt buttons are  
functional.  
Invisible zipper at back  
Puff sleeve with elastic  
Slim fit through body  
Slim top skirt with ruffle  
Tie belt at waist  
Above the knee  
(35" HPS)

**Black**  
**Blue**  
**Ivory**

\*Note: In production,  
the eyelet trim will  
be removed from  
the front placket  
and remain  
around the  
neck.







**Samara**  
**46FX616M - MAXI**  
-----

Lightweight washed linen  
(100% linen)  
Body is lined  
(100% viscose)  
Buttons at front body:  
only the top and lower  
skirt buttons are  
functional.  
Invisible zipper at back  
Puff sleeve with elastic  
Slim fit through body  
Slim top skirt with ruffle  
Tie belt at waist  
Ankle length:  
(51" HPS)

**Black**  
**Blue**  
**Ivory**

\*Note: Samples are too  
long, they will be ankle  
length in production.

\*\*\*The eyelet trim will be  
removed from the front  
placket and remain  
around the neck.





**Samara  
46FX616M - MAXI**  
-----

Lightweight washed linen  
(100% linen)  
Body is lined  
(100% viscose)  
Buttons at front body:  
only the top and lower  
skirt buttons are  
functional.  
Invisible zipper at back  
Puff sleeve with elastic  
Slim fit through body  
Slim top skirt with ruffle  
Tie belt at waist  
Ankle length:  
(51" HPS)

**Black  
Blue  
Ivory**

\*Note: Samples are too  
long, they will be ankle  
length in production.

\*\*\*The eyelet trim will be  
removed from the front  
placket and remain  
around the neck.



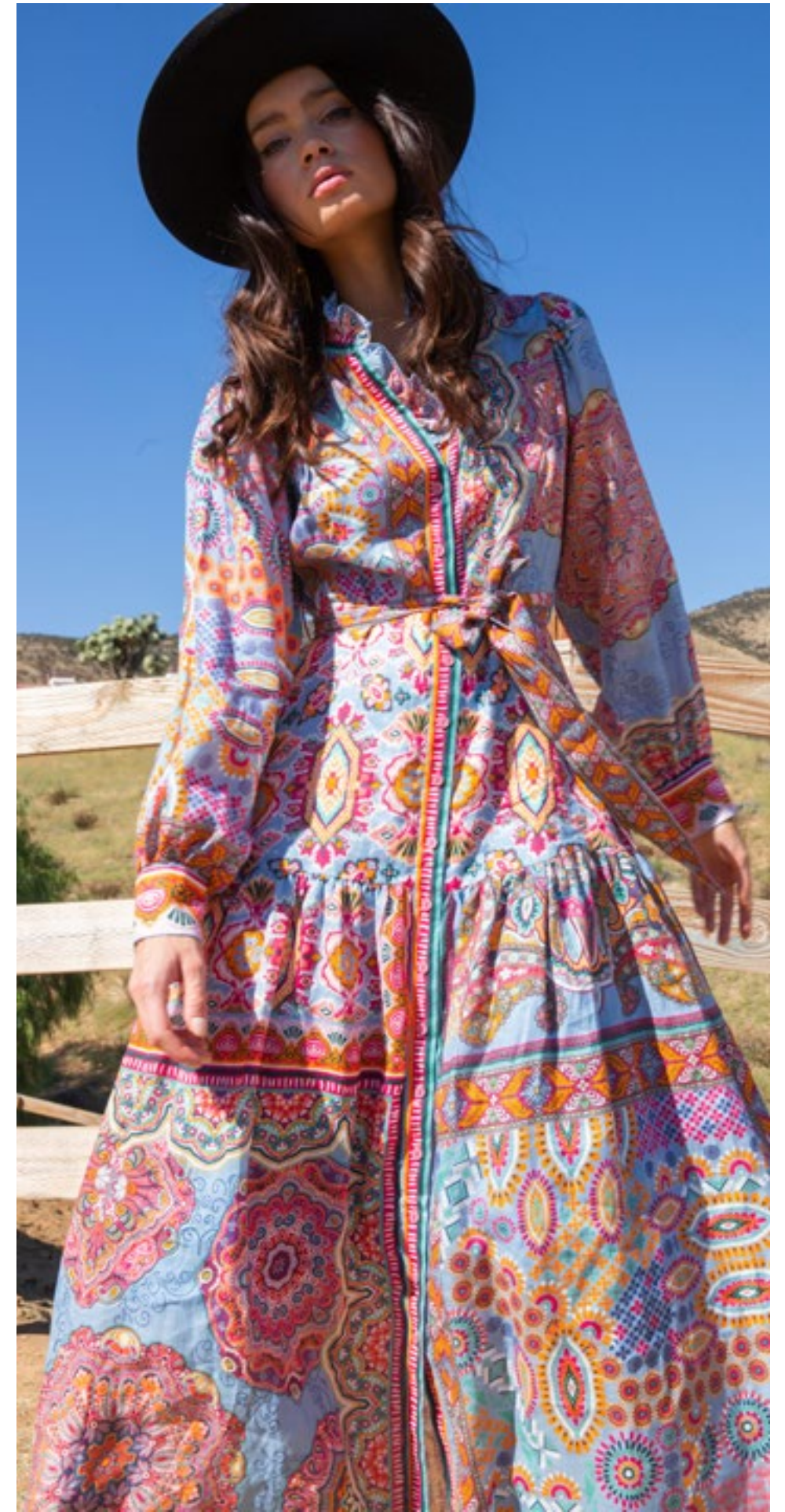
**Samara  
46FX616M - MAXI**  
-----

Lightweight washed linen  
(100% linen)  
Body is lined  
(100% viscose)  
Buttons at front body:  
only the top and lower  
skirt buttons are  
functional.  
Invisible zipper at back  
Puff sleeve with elastic  
Slim fit through body  
Slim top skirt with ruffle  
Tie belt at waist  
Ankle length:  
(51" HPS)

**Black  
Blue  
Ivory**

\*Note: Samples are too  
long, they will be ankle  
length in production.

\*\*\*The eyelet trim will be  
removed from the front  
placket and remain  
around the neck.







# Secret Garden



**Royalty**  
**46GD220A**

-----  
Embroidered crinkle gauze  
(100% Viscose)  
Body is lined  
(100% viscose challis)

**Black**  
**Ivory**



**Royalty**  
**46GD220A**

-----  
Embroidered crinkle gauze  
(100% Viscose)  
Body is lined  
(100% viscose challis)

**Black**  
**Ivory**



**Selah**  
**46GD222A**

-----  
Washed crepe de chine  
(100% silk)  
Buttons at front placket  
Voluminous sleeve  
with cuff  
Low hip length  
with slits at sides

**Black**  
**Ivory**







**Selah  
46GD222A**

Washed crepe de chine  
(100% silk)  
Buttons at front placket  
Voluminous sleeve  
with cuff  
Low hip length  
with slits at sides

**Black  
Ivory**



**Annalise  
46GD224A**

Matte jersey  
(96% polyester/  
4% spandex)  
Mesh lining  
(95% nylon/8% spandex)  
Keyhole at back neck  
with button  
Slim easy fit  
Hip length

**Black  
Ivory**



**Annalise  
46GD224A**

Matte jersey  
(96% polyester/  
4% spandex)  
Mesh lining  
(95% nylon/8% spandex)  
Keyhole at back neck  
with button  
Slim easy fit  
Hip length

**Black  
Ivory**





**Madeleine  
46GD226A**

-----  
Embroidered linen  
(100% linen)  
Stretch satin lining  
(97% polyester/  
3% spandex)  
Hook & eye closure  
at front  
Adjustable strap  
at back waist

**Black  
Ivory**



**Madeleine  
46GD226A**

-----  
Embroidered linen  
(100% linen)  
Stretch satin lining  
(97% polyester/  
3% spandex)  
Hook & eye closure  
at front  
Adjustable strap  
at back waist

**Black  
Ivory**





**Camryn  
46GD620A**

-----  
Embroidered slub voile  
(80% Rayon/20% Linen)  
Body is lined  
(100% viscose challis)  
Kimono sleeve  
Oversized voluminous fit  
Above the knee  
(35.5" HPS)

**Black  
Ivory**



**Camryn  
46GD620A**

-----  
Embroidered slub voile  
(80% Rayon/20% Linen)  
Body is lined  
(100% viscose challis)  
Kimono sleeve  
Oversized voluminous fit  
Above the knee  
(35.5" HPS)

**Black  
Ivory**





**Melissa**  
**46GD622A - SHORT**

Lightweight washed linen  
(100% linen)  
Body is lined  
(100% viscose)  
Buttons at front body:  
only the top and lower  
skirt buttons are  
functional.  
Invisible zipper at back  
7/8 length sleeve  
with elastic  
Slim fit through body  
Slim top skirt with ruffle  
Self covered belt at waist  
Above the knee  
(35" HPS)

**Black**  
**Ivory**



**Melissa**  
**46GD622A - SHORT**

Lightweight washed linen  
(100% linen)  
Body is lined  
(100% viscose)  
Buttons at front body:  
only the top and lower  
skirt buttons are  
functional.  
Invisible zipper at back  
7/8 length sleeve  
with elastic  
Slim fit through body  
Slim top skirt with ruffle  
Self covered belt at waist  
Above the knee  
(35" HPS)

**Black**  
**Ivory**





**Melissa  
46GD622M - MAXI**  
-----

Lightweight washed linen  
(100% linen)  
Body is lined  
(100% viscose)  
Buttons at front body:  
only the top and lower  
skirt buttons are  
functional.  
Invisible zipper at back  
7/8 length sleeve  
with elastic  
Slim fit through body  
Slim top skirt with ruffle  
Self covered belt at waist  
Ankle length:  
(51" HPS)

**Black  
Ivory**

\*Note: Samples are too  
long, they will be ankle  
length in production.



**Melissa  
46GD622M - MAXI**  
-----

Lightweight washed linen  
(100% linen)  
Body is lined  
(100% viscose)  
Buttons at front body:  
only the top and lower  
skirt buttons are  
functional.  
Invisible zipper at back  
7/8 length sleeve  
with elastic  
Slim fit through body  
Slim top skirt with ruffle  
Self covered belt at waist  
Ankle length:  
(51" HPS)

**Black  
Ivory**

\*Note: Samples are too  
long, they will be ankle  
length in production.





**Nayeli**  
**46GD624A - SHORT**

Matte jersey  
(96% polyester/  
4% spandex)  
Mesh lining  
(92% nylon/8% spandex)  
Slim fit through bodice  
A-line skirt with pleat  
at waist  
3/4 balloon sleeve  
with cuff  
Above the knee  
(35.5" HPS)

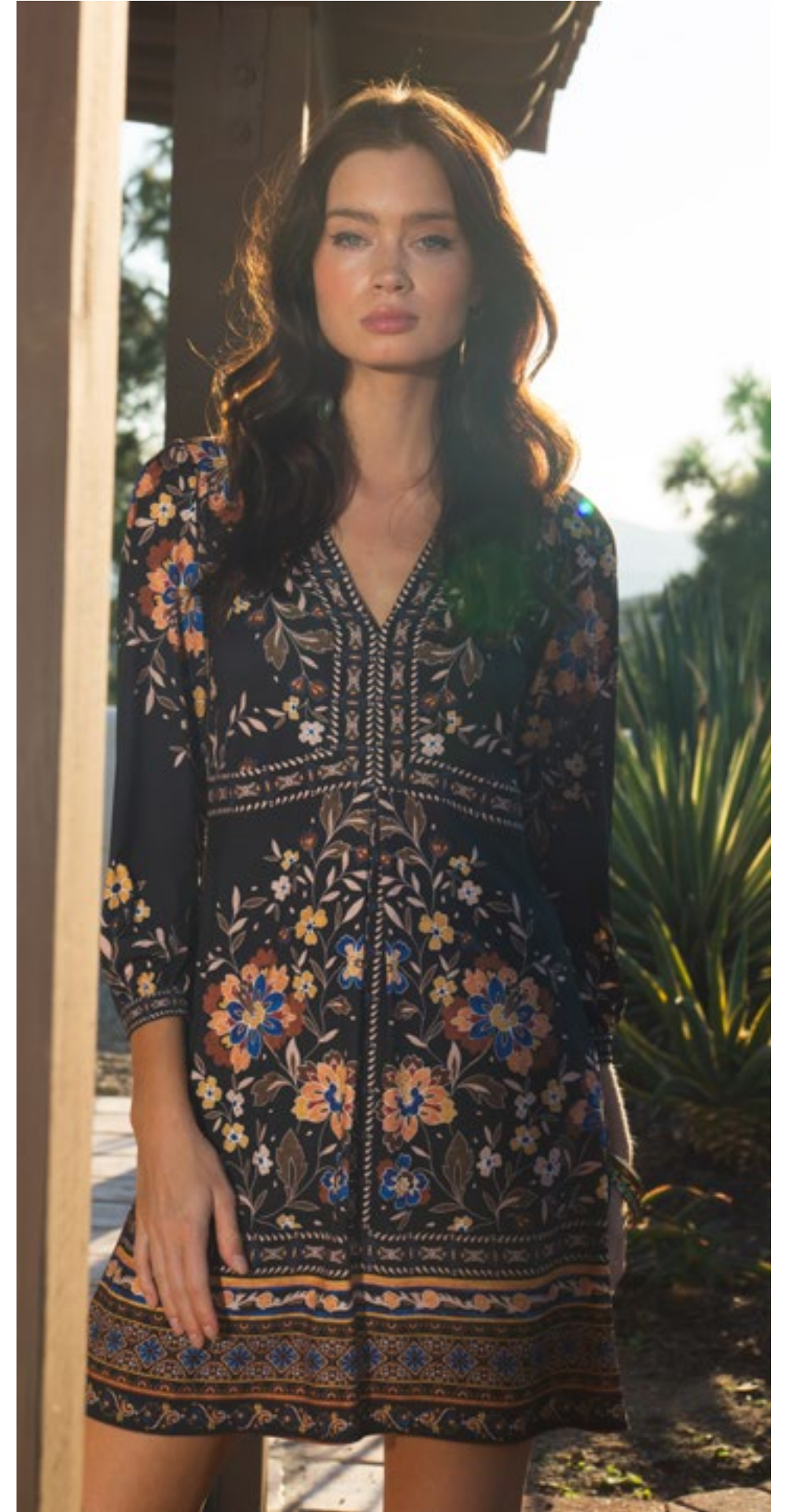
**Black**  
**Ivory**



**Nayeli**  
**46GD624A - SHORT**

Matte jersey  
(96% polyester/  
4% spandex)  
Mesh lining  
(92% nylon/8% spandex)  
Slim fit through bodice  
A-line skirt with pleat  
at waist  
3/4 balloon sleeve  
with cuff  
Above the knee  
(35.5" HPS)

**Black**  
**Ivory**







**Nayeli**  
**46GD624D - MIDI**

Matte jersey  
(96% polyester/  
4% spandex)  
Mesh lining  
(92% nylon/8% spandex)  
Slim fit through bodice  
A-line skirt with pleat  
at waist  
3/4 balloon sleeve  
with cuff  
Below the knee  
(41" HPS)

**Black**  
**Ivory**



**Nayeli**  
**46GD624D - MIDI**

Matte jersey  
(96% polyester/  
4% spandex)  
Mesh lining  
(92% nylon/8% spandex)  
Slim fit through bodice  
A-line skirt with pleat  
at waist  
3/4 balloon sleeve  
with cuff  
Below the knee  
(41" HPS)

**Black**  
**Ivory**









Limited  
Edition  
Denim





**Blake  
ODEN510B**

-----  
Stretch denim  
LTB/NAV content:  
80% cotton/  
18% polyester/  
2% spandex  
BLK/WHT content:  
96% cotton/  
3% Polyester/1% spandex  
High waist (12" rise)  
Wide leg with flare  
Stitched pin tuck  
at front & back  
Side pockets at front  
Patch pockets at back  
33" inseam  
with invisible hem  
Deep hem  
to adjust length

**Black  
Light blue wash  
Dark blue wash  
White**



**Blake  
ODEN510B**

-----  
Stretch denim  
LTB/NAV content:  
80% cotton/  
18% polyester/  
2% spandex  
BLK/WHT content:  
96% cotton/  
3% Polyester/1% spandex  
High waist (12" rise)  
Wide leg with flare  
Stitched pin tuck  
at front & back  
Side pockets at front  
Patch pockets at back  
33" inseam  
with invisible hem  
Deep hem  
to adjust length

**Black  
Light blue wash  
Dark blue wash  
White**



**Blake  
ODEN510B**

-----  
Stretch denim  
LTB/NAV content:  
80% cotton/  
18% polyester/  
2% spandex  
BLK/WHT content:  
96% cotton/  
3% Polyester/1% spandex  
High waist (12" rise)  
Wide leg with flare  
Stitched pin tuck  
at front & back  
Side pockets at front  
Patch pockets at back  
33" inseam  
with invisible hem  
Deep hem  
to adjust length

**Black  
Light blue wash  
Dark blue wash  
White**



**Blake  
ODEN510B**

-----  
Stretch denim  
LTB/NAV content:  
80% cotton/  
18% polyester/  
2% spandex  
BLK/WHT content:  
96% cotton/  
3% Polyester/1% spandex  
High waist (12" rise)  
Wide leg with flare  
Stitched pin tuck  
at front & back  
Side pockets at front  
Patch pockets at back  
33" inseam  
with invisible hem  
Deep hem  
to adjust length

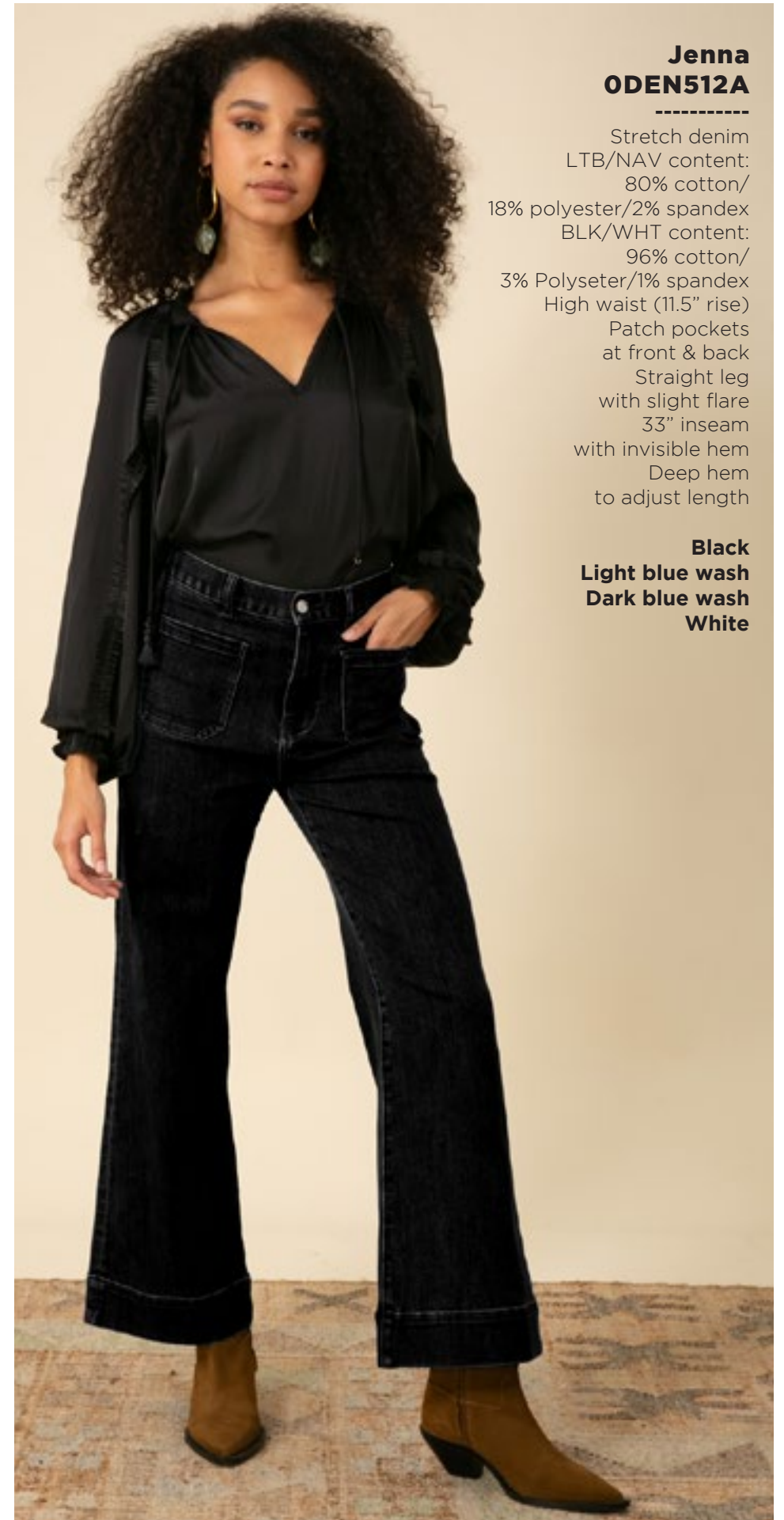
**Black**  
**Light blue wash**  
**Dark blue wash**  
**White**



**Jenna  
ODEN512A**

-----  
Stretch denim  
LTB/NAV content:  
80% cotton/  
18% polyester/2% spandex  
BLK/WHT content:  
96% cotton/  
3% Polyester/1% spandex  
High waist (11.5" rise)  
Patch pockets  
at front & back  
Straight leg  
with slight flare  
33" inseam  
with invisible hem  
Deep hem  
to adjust length

**Black**  
**Light blue wash**  
**Dark blue wash**  
**White**







**Jenna  
ODEN512A**

Stretch denim  
LTB/NAV content:  
80% cotton/  
18% polyester/2% spandex  
BLK/WHT content:  
96% cotton/  
3% Polyester/1% spandex  
High waist (11.5" rise)  
Patch pockets  
at front & back  
Straight leg  
with slight flare  
33" inseam  
with invisible hem  
Deep hem  
to adjust length

**Black**  
**Light blue wash**  
**Dark blue wash**  
**White**  
**8**



**Jenna  
ODEN512A**

Stretch denim  
LTB/NAV content:  
80% cotton/  
18% polyester/2% spandex  
BLK/WHT content:  
96% cotton/  
3% Polyester/1% spandex  
High waist (11.5" rise)  
Patch pockets  
at front & back  
Straight leg  
with slight flare  
33" inseam  
with invisible hem  
Deep hem  
to adjust length

**Black**  
**Light blue wash**  
**Dark blue wash**  
**White**



**Jenna  
ODEN512A**

Stretch denim  
LTB/NAV content:  
80% cotton/  
18% polyester/2% spandex  
BLK/WHT content:  
96% cotton/  
3% Polyester/1% spandex  
High waist (11.5" rise)  
Patch pockets  
at front & back  
Straight leg  
with slight flare  
33" inseam  
with invisible hem  
Deep hem  
to adjust length

**Black**  
**Light blue wash**  
**Dark blue wash**  
**White**





Petal



Flurry





**Raelyn  
46PT230A**

Washed crepe de chine  
(100% silk)  
Ruffle with tie at neckline  
Deep keyhole  
with buttons  
Long sleeve  
with smocked cuff  
at wrist

**Blue  
Pink**



**Raelyn  
46PT230A**

Washed crepe de chine  
(100% silk)  
Ruffle with tie at neckline  
Deep keyhole  
with buttons  
Long sleeve  
with smocked cuff  
at wrist

**Blue  
Pink**



**Esme  
46PT232A**

Washed challis  
(100% viscose)  
Buttons at front placket  
Flutter sleeve with trim  
Pintuck pleats  
at front & back  
Swingy fit, hip length

**Blue  
Pink**



**Esme**  
**46PT232A**

Washed challis  
(100% viscose)  
Buttons at front placket  
Flutter sleeve with trim  
Pintuck pleats  
at front & back  
Swingy fit, hip length

**Blue**  
**Pink**



**Leighton**  
**46PT234A**

Matte jersey  
(96% polyester/  
4% spandex)  
3/4 sleeve with cuff  
Slim fit through body  
Hip length

**Blue**



**Everlee**  
**46PT530A**

Matte jersey  
(96% polyester/  
4% spandex)  
Elastic at waist  
High waist (9.25" rise)  
Slim fit with flared leg  
Full length (32" inseam)

**Blue**





**Lilliana  
46PT330A**

-----  
Jacquard cashmere  
feel sweater (45% Nylon/  
30% Acrylic/20% Viscose/  
5% Wool)  
Easy fit through body  
Hip length

**Grey  
Pink**



**Lilliana  
46PT330A**

-----  
Jacquard cashmere  
feel sweater (45% Nylon/  
30% Acrylic/20% Viscose/  
5% Wool)  
Easy fit through body  
Hip length

**Grey  
Pink**



**Mabel**  
**46PT630A**

Matte jersey  
(96% polyester/  
4% spandex)  
Easy/slim fit  
through bodice  
3/4 sleeve with tier  
Swingy tiered skirt  
Above the knee length  
(35.5" HPS)

**Blue**  
**Pink**



**Mabel**  
**46PT630A**

Matte jersey  
(96% polyester/  
4% spandex)  
Easy/slim fit  
through bodice  
3/4 sleeve with tier  
Swingy tiered skirt  
Above the knee length  
(35.5" HPS)

**Blue**  
**Pink**







**Izabella  
46PT632A**

-----  
Chiffon  
(100% polyester)  
Ruffle along front neckline  
Flutter sleeve  
with ruffle  
Slim fit at waist  
Invisible zip at back  
Asymmetrical voluminous  
tier (37" HPS at shortest  
point, 47" at longest  
point)

**Blue  
Pink**

**Izabella  
46PT632A**

-----  
Chiffon  
(100% polyester)  
Ruffle along front neckline  
Flutter sleeve  
with ruffle  
Slim fit at waist  
Invisible zip at back  
Asymmetrical voluminous  
tier (37" HPS at shortest  
point, 47" at longest  
point)

**Blue  
Pink**





# Homecoming







**Danna  
46RH240A**

Space Dyed Knit  
(90% Viscose/  
10% Polyamide)  
Balloon sleeve  
with fitted band  
Slim body, hip length

**Blue  
Brown**



**Danna  
46RH240A**

Space Dyed Knit  
(90% Viscose/  
10% Polyamide)  
Balloon sleeve  
with fitted band  
Slim body, hip length

**Blue  
Brown**



**Rosemary  
46RH242A**

Space Dyed Knit  
(90% Viscose/  
10% Polyamide)  
Partial placket  
with buttons  
Long flared sleeve  
Slim body, hip length

**Blue  
Brown**





**Rosemary  
46RH242A**

Space Dyed Knit  
(90% Viscose/  
10% Polyamide)  
Partial placket  
with buttons  
Long flared sleeve  
Slim body, hip length

**Blue  
Brown**



**Makenna  
46RH540A**

Space Dyed Knit  
(90% Viscose/  
10% Polyamide)  
Elastic at waist  
High waist  
Slim fit with flared leg  
Full length  
(31" inseam)

**Blue  
Brown**



**Makenna  
46RH540A**

Space Dyed Knit  
(90% Viscose/  
10% Polyamide)  
Elastic at waist  
High waist  
Slim fit with flared leg  
Full length  
(31" inseam)

**Blue  
Brown**







# Bathing Beauty







**Demi  
46UB250A**

Washed charmeuse  
(100% polyester)  
Long sleeve  
with smocked cuff  
Pleated ruffles throughout  
Tie at front neck  
with buttons at keyhole  
Hip length  
with curved hem

**Blue**



**Demi  
46UB250S**

Washed charmeuse  
(100% polyester)  
Long sleeve  
with smocked cuff  
Pleated ruffles throughout  
Tie at front neck  
with buttons at keyhole  
Hip length  
with curved hem

**Black  
Champagne  
Indigo  
Rose**



**Demi  
46UB250S**

Washed charmeuse  
(100% polyester)  
Long sleeve  
with smocked cuff  
Pleated ruffles throughout  
Tie at front neck  
with buttons at keyhole  
Hip length  
with curved hem

**Black  
Champagne  
Indigo  
Rose**





**Demi  
46UB250S**

Washed charmeuse  
(100% polyester)  
Long sleeve  
with smocked cuff  
Pleated ruffles throughout  
Tie at front neck  
with buttons at keyhole  
Hip length  
with curved hem

**Black  
Champagne  
Indigo  
Rose**



**Demi  
46UB250S**

Washed charmeuse  
(100% polyester)  
Long sleeve  
with smocked cuff  
Pleated ruffles throughout  
Tie at front neck  
with buttons at keyhole  
Hip length  
with curved hem

**Black  
Champagne  
Indigo  
Rose**



**Aitana  
46UB252A**

Washed charmeuse  
(100% polyester)  
Pleated double tier sleeve  
Pleated ruffles  
at neck/yoke  
Tie at front neck  
Hip length  
with curved hem

**Blue**



**Aitana  
46UB252S**

-----  
Washed charmeuse  
(100% polyester)  
Pleated double tier sleeve  
Pleated ruffles  
at neck/yoke  
Tie at front neck  
Hip length  
with curved hem

**Black  
Champagne  
Indigo  
Rose**



**Aitana  
46UB252S**

-----  
Washed charmeuse  
(100% polyester)  
Pleated double tier sleeve  
Pleated ruffles  
at neck/yoke  
Tie at front neck  
Hip length  
with curved hem

**Black  
Champagne  
Indigo  
Rose**



**Aitana  
46UB252S**

-----  
Washed charmeuse  
(100% polyester)  
Pleated double tier sleeve  
Pleated ruffles  
at neck/yoke  
Tie at front neck  
Hip length  
with curved hem

**Black  
Champagne  
Indigo  
Rose**







**Aitana**  
**46UB252S**

-----  
Washed charmeuse  
(100% polyester)  
Pleated double tier sleeve  
Pleated ruffles  
at neck/yoke  
Tie at front neck  
Hip length  
with curved hem

**Black**  
**Champagne**  
**Indigo**  
**Rose**



**Charli**  
**46UB350A**

-----  
Tie-dyed cashmere feel  
sweater (45% Nylon/30%  
Acrylic/20% Viscose/  
5% Wool)  
Easy fit through body  
Hip length

**Blue**



**Ainsley**  
**46UB650A**

-----  
Chiffon  
(100% polyester)  
V-neck with  
flounce ruffle  
Flutter sleeve  
Tiered flounce skirt  
Slit at front leg  
starting at mid-thigh  
Maxi length  
(58" HPS)

**Blue**  
**Orange**





**Ainsley  
46UB650A**

-----  
Chiffon  
(100% polyester)  
V-neck with  
founce ruffle  
Flutter sleeve  
Tiered founce skirt  
Slit at front leg  
starting at mid-thigh  
Maxi length  
(58" HPS)

**Blue  
Orange**



**Ainsley  
46UB650S**

-----  
Washed charmeuse  
(100% polyester)  
V-neck with  
founce ruffle  
Flutter sleeve  
Tiered founce skirt  
Slit at front leg  
starting at mid-thigh  
Maxi length  
(58" HPS)

**Black  
Champagne  
Indigo  
Rose**



**Ainsley  
46UB650S**

-----  
Washed charmeuse  
(100% polyester)  
V-neck with  
founce ruffle  
Flutter sleeve  
Tiered founce skirt  
Slit at front leg  
starting at mid-thigh  
Maxi length  
(58" HPS)

**Black  
Champagne  
Indigo  
Rose**





**Ainsley  
46UB650S**  
-----

Washed charmeuse  
(100% polyester)  
V-neck with  
flounce ruffle  
Flutter sleeve  
Tiered flounce skirt  
Slit at front leg  
starting at mid-thigh  
Maxi length  
(58" HPS)

**Black  
Champagne  
Indigo  
Rose**



**Ainsley  
46UB650S**  
-----

Washed charmeuse  
(100% polyester)  
V-neck with  
flounce ruffle  
Flutter sleeve  
Tiered flounce skirt  
Slit at front leg  
starting at mid-thigh  
Maxi length  
(58" HPS)

**Black  
Champagne  
Indigo  
Rose**



**Brynn  
46UB652A**  
-----

Heavyweight jersey  
(95% viscose/  
5% spandex)  
Dropped shoulder/  
cap sleeve  
Slim fit body  
with shirring at  
center front & back  
through waist  
Swingy voluminous skirt  
with gussets  
Ankle length:  
(51" HPS)

**Blue  
Orange**

\*Note: Samples are too  
long, they will be ankle  
length in production.



**Giselle**  
**46UB654A**

-----  
Washed charmeuse  
(100% polyester)  
Pintucked yoke at front  
Ruffle drape sleeve  
Elastic at side  
body & back waist  
Pockets at hips  
Voluminous tier at hem  
Ankle length:  
(51" HPS)

**Blue**

\*Note: Samples are too  
long, they will be ankle  
length in production.





This book is a presentation of a selection of Hale Bob product and is correct at time of publication.

To view the entire collection of products including updates and additions. You can view product line sheets at [halebob.com](http://halebob.com) by logging into the "Merchant" section of our website.

Prices and products posted in this book are current at time of publication but are subject to change.

Sales Director  
East Coast  
South

Sales Executive  
Latin America  
West Coast

Sales Executive  
Southwest  
Midwest

Cathy Cooley  
310-963-2463  
[cathy@halebob.com](mailto:cathy@halebob.com)

Isabela Peralta  
323-394-1739  
[isabela@halebob.com](mailto:isabela@halebob.com)

Tracy Holden  
214-454-1176  
[tracy@halebob.com](mailto:tracy@halebob.com)

**For Marketing & Press Inquiries:**

Marianna Gunther  
[marianna@halebob.com](mailto:marianna@halebob.com)

# HALE BOB

LOS ANGELES

