

# HALE BOB

LOS ANGELES

Season 5





Ripple Effect



**Palmer  
45EC210A**  
-----

Washed challis  
(100% viscose)  
Voluminous sleeve  
with smocked cuff  
Easy fit  
Low hip length  
with curved hem

**Olive  
Periwinkle**

**\$68**

**Mckenzie  
45EC510A**  
-----

Matte jersey  
(96% polyester/  
4% spandex)  
Elastic at waist  
High waist  
(9.25" rise)  
Slim fit  
with flared leg  
Full length  
(32" inseam)

**Olive**

**\$78**



**Palmer  
45EC210A**  
-----

Washed challis  
(100% viscose)  
Voluminous sleeve  
with smocked cuff  
Easy fit  
Low hip length  
with curved hem

**Olive  
Periwinkle**

**\$68**



**Noa  
45EC212A**  
-----

Matte jersey  
(96% polyester/  
4% spandex)  
Short sleeve  
Slim fit through body  
Hip length

**Olive  
Periwinkle**

**\$58**

**Noa**  
**45EC212A**

Matte jersey  
(96% polyester/  
4% spandex)  
Short sleeve  
Slim fit  
through body  
Hip length

**Olive**  
**Periwinkle**

**\$58**



**Aurelia**  
**45EC410A**

Washed charmeuse  
(100% Polyester)  
Waistband  
with smocked back  
Invisible zipper  
at back  
Soft flex belt  
at waist  
Below the knee  
length

**Olive**

**\$108**





**Kiara  
45EC610A**

-----  
Washed chiffon  
(70% rayon/30% silk)  
Jersey lining  
(95% viscose/  
5% spandex)  
Smocked neckline  
& waistband  
Ruffle detail at neck  
Flutter sleeve  
Swingy skirt with tier  
Above the knee length  
(35.5" HPS)

**Olive  
Periwinkle**

**\$128**



**Kiara  
45EC610A**

-----  
Washed chiffon  
(70% rayon/30% silk)  
Jersey lining  
(95% viscose/  
5% spandex)  
Smocked neckline  
& waistband  
Ruffle detail at neck  
Flutter sleeve  
Swingy skirt with tier  
Above the knee length  
(35.5" HPS)

**Olive  
Periwinkle**

**\$128**



**Amari  
45EC612A**

-----  
Slub Voile  
(91%Lyocell/9%Linen)  
Challis lining  
(100% Viscose)  
Embroidered eyelet trim  
Buttons at neck  
3/4 length sleeve  
Above the knee  
(35.5" HPS)

**\$118**

**Olive  
Periwinkle**



**Amari  
45EC612A**

-----  
Slub Voile  
(91%Lyocell/9%Linen)  
Challis lining  
(100% Viscose)  
Embroidered eyelet trim  
Buttons at neck  
3/4 length sleeve  
Above the knee  
(35.5" HPS)

**\$118**

**Olive  
Periwinkle**





**Amari  
45EC612M**

Slub Voile  
(91%Lyocell/9%Linen)  
Challis lining  
(100% Viscose)  
Embroidered eyelet trim  
Buttons at neck  
3/4 length sleeve  
Above the knee  
(35.5" HPS)

**\$168**

**Olive  
Periwinkle**

\*Note: Samples are too long,  
they will be ankle length in  
production.



**Amari  
45EC612M**

Slub Voile  
(91%Lyocell/9%Linen)  
Challis lining  
(100% Viscose)  
Embroidered eyelet trim  
Buttons at neck  
3/4 length sleeve  
Above the knee  
(35.5" HPS)

**\$168**

**Olive  
Periwinkle**

\*Note: Samples are too long,  
they will be ankle length in  
production.



**Gracelynn  
45EC614A**

Matte jersey  
(96% polyester/  
4% spandex)  
Mesh lining  
(92% nylon/8% spandex)  
Slim fit through bodice  
A-line skirt  
with pleat at waist  
3/4 balloon sleeve  
with cuff  
Above the knee length  
(35.5" HPS)

**Olive  
Periwinkle**

**\$98**



**Gracelynn  
45EC614A**

Matte jersey  
(96% polyester/  
4% spandex)  
Mesh lining  
(92% nylon/8% spandex)  
Slim fit through bodice  
A-line skirt  
with pleat at waist  
3/4 balloon sleeve  
with cuff  
Above the knee length  
(35.5" HPS)

**Olive  
Periwinkle**

**\$98**



**Gracelynn  
45EC614D**

Matte jersey  
(96% polyester/  
4% spandex)  
Mesh lining  
(92% nylon/8% spandex)  
Slim fit through bodice  
A-line skirt  
with pleat at waist  
3/4 balloon sleeve  
with cuff  
Below the knee length  
(41" HPS)

**Olive  
Periwinkle**

**\$108**



**Gracelynn  
45EC614D**

Matte jersey  
(96% polyester/  
4% spandex)  
Mesh lining  
(92% nylon/8% spandex)  
Slim fit through bodice  
A-line skirt  
with pleat at waist  
3/4 balloon sleeve  
with cuff  
Below the knee length  
(41" HPS)

**Olive  
Periwinkle**

**\$108**





# Eternal Sunshine



**Adriana**  
**45LN220A**

-----  
Washed chiffon  
(70% rayon/30% silk)  
Jersey lining  
(95% viscose/  
5% spandex)  
Buttons at placket  
Flutter sleeve ends  
above elbow  
Hip length  
with curved hem

**Blue**  
**Pink**

**\$88**



**Adriana**  
**45LN220A**

-----  
Washed chiffon  
(70% rayon/30% silk)  
Jersey lining  
(95% viscose/  
5% spandex)  
Buttons at placket  
Flutter sleeve ends  
above elbow  
Hip length  
with curved hem

**Blue**  
**Pink**

**\$88**



**Lauren**  
**45LN222A**

-----  
Washed crepe de chine  
(100% Silk)  
Buttons at top  
of front placket  
3/4 length sleeve  
with smocked cuff  
Hip length  
with curved hem

**Blue**  
**Pink**

**\$138**



**Lauren**  
**45LN222A**

-----  
Washed crepe de chine  
(100% Silk)  
Buttons at top  
of front placket  
3/4 length sleeve  
with smocked cuff  
Hip length  
with curved hem

**Blue**  
**Pink**

**\$138**



**Cali**  
**45LN224A**

-----  
Stretch Jersey  
(95% viscose/  
5% spandex)  
Adjustable halter neckline  
Center front keyhole  
High hip  
with curved hem

**Blue**  
**Pink**

**\$68**

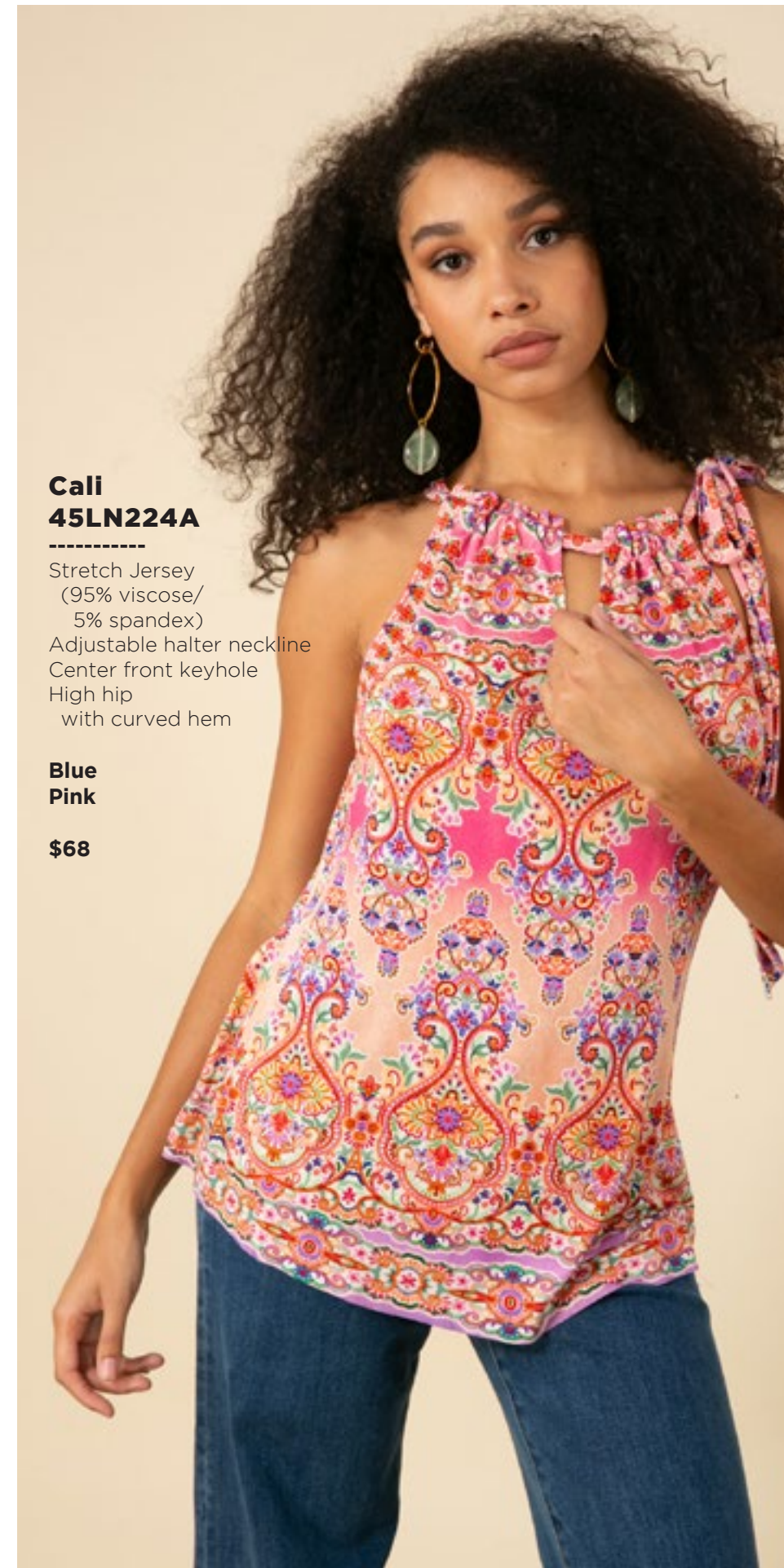


**Cali**  
**45LN224A**

-----  
Stretch Jersey  
(95% viscose/  
5% spandex)  
Adjustable halter neckline  
Center front keyhole  
High hip  
with curved hem

**Blue**  
**Pink**

**\$68**



**Aniyah**  
**45LN620A**

Matte jersey  
(96% polyester/  
4% spandex)  
Slim fit through rib cage  
Easy swing fit body  
Pockets at hips  
3/4 length bell sleeve  
Above the knee length  
(35.5" HPS)

**Blue**  
**Pink**

**\$98**



**Aniyah**  
**45LN620A**

Matte jersey  
(96% polyester/  
4% spandex)  
Slim fit through rib cage  
Easy swing fit body  
Pockets at hips  
3/4 length bell sleeve  
Above the knee length  
(35.5" HPS)

**Blue**  
**Pink**

**\$98**



**Nicole**  
**45LN622A**

Viscose Charmeuse  
(54% Rayon/  
46% Viscose)  
Ruffle sleeve  
Elastic with tie at waist  
High-low hem  
(35" at front,  
57" at back)

**Blue**  
**Pink**

**\$148**



**Nicole**  
**45LN622A**

Viscose Charmeuse  
(54% Rayon/  
46% Viscose)  
Ruffle sleeve  
Elastic with tie at waist  
High-low hem  
(35" at front,  
57" at back)

**Blue**  
**Pink**

**\$148**



**Alexis**  
**45LN624A**

Slub Voile  
(91%Lyocell/9%Linen)  
Body is lined  
(100% Viscose challis)  
Flutter sleeve ends  
above elbow  
Smocked waistband  
Pockets at hips  
Ankle length:  
(51" HPS)

**Blue**  
**Pink**

**\$148**

\*Note: Samples are too  
long, they will be ankle  
length in production.





**Alexis  
45LN624A**

Slub Voile  
(91%Lyocell/9%Linen)  
Body is lined  
(100% Viscose challis)  
Flutter sleeve ends  
above elbow  
Smocked waistband  
Pockets at hips  
Ankle length:  
(51" HPS)

**Blue  
Pink**

**\$148**

\*Note: Samples are too  
long, they will be ankle  
length in production.





**Mariah  
45LN626A**  
-----

Embroidered Slub Voile  
(91%Lyocell/9%Linen)  
Body is lined  
(100% Viscose challis)  
Flutter sleeve ends  
above elbow  
Smocked waistband  
Pockets at hips  
Ankle length: (51" HPS)

**Black  
Olive  
Rose**

**\$218**

\*Note: Samples are too  
long, they will be ankle  
length in production.



**Mariah  
45LN626A**  
-----

Embroidered Slub Voile  
(91%Lyocell/9%Linen)  
Body is lined  
(100% Viscose challis)  
Flutter sleeve ends  
above elbow  
Smocked waistband  
Pockets at hips  
Ankle length: (51" HPS)

**Black  
Olive  
Rose**

**\$218**

\*Note: Samples are too  
long, they will be ankle  
length in production.





**Mariah**  
**45LN626A**

-----  
Embroidered Slub Voile  
(91%Lyocell/9%Linen)  
Body is lined  
(100% Viscose challis)  
Flutter sleeve ends  
above elbow  
Smocked waistband  
Pockets at hips  
Ankle length: (51" HPS)

**Black**  
**Olive**  
**Rose**

**\$218**

\*Note: Samples are too  
long, they will be ankle  
length in production.





Limited  
Edition  
Denim

**Blake**  
**ODEN510B**

Stretch denim  
LTB/NAV content:  
80% cotton/  
18% polyester/  
2% spandex  
BLK/WHT content:  
96% cotton/  
3% Polyester/1% spandex  
High waist (12" rise)  
Wide leg with flare  
Stitched pin tuck  
at front & back  
Side pockets at front  
Patch pockets at back  
33" inseam  
with invisible hem  
Deep hem  
to adjust length

**Black**  
**Light blue wash**  
**Dark blue wash**  
**White**

**\$88**



**Blake**  
**ODEN510B**

Stretch denim  
LTB/NAV content:  
80% cotton/  
18% polyester/  
2% spandex  
BLK/WHT content:  
96% cotton/  
3% Polyester/1% spandex  
High waist (12" rise)  
Wide leg with flare  
Stitched pin tuck  
at front & back  
Side pockets at front  
Patch pockets at back  
33" inseam  
with invisible hem  
Deep hem  
to adjust length

**Black**  
**Light blue wash**  
**Dark blue wash**  
**White**

**\$88**





**Blake  
ODEN510B**

Stretch denim  
LTB/NAV content:  
80% cotton/  
18% polyester/  
2% spandex  
BLK/WHT content:  
96% cotton/  
3% Polyester/1% spandex  
High waist (12" rise)  
Wide leg with flare  
Stitched pin tuck  
at front & back  
Side pockets at front  
Patch pockets at back  
33" inseam  
with invisible hem  
Deep hem  
to adjust length

**Black**  
**Light blue wash**  
**Dark blue wash**  
**White**

**\$88**



**Blake**  
**ODEN510B**

Stretch denim  
LTB/NAV content:  
80% cotton/  
18% polyester/  
2% spandex  
BLK/WHT content:  
96% cotton/  
3% Polyester/1% spandex  
High waist (12" rise)  
Wide leg with flare  
Stitched pin tuck  
at front & back  
Side pockets at front  
Patch pockets at back  
33" inseam  
with invisible hem  
Deep hem  
to adjust length

**Black**  
**Light blue wash**  
**Dark blue wash**  
**White**

**\$88**



# Dreamweaver



**Kalani**  
**45MW230A**

-----  
Slub Voile  
(91%Lyocell/9%Linen)  
Embroidered style  
Buttons at front yoke,  
long sleeve

**Black**  
**White**

**\$118**



**Kalani**  
**45MW230A**

-----  
Slub Voile  
(91%Lyocell/9%Linen)  
Embroidered style  
Buttons at front yoke,  
long sleeve

**Black**  
**White**

**\$118**





**Kalani  
45MW230T**

Chambray (100% Tencel)  
Embroidered style  
Buttons at front yoke,  
long sleeve

**Blue**

**\$118**



**Gabriela  
45MW630A**

Slub Voile  
(91%Lyocell/9%Linen)  
Embroidered style  
Buttons at front placket  
3/4 length voluminous sleeve  
Easy/slim fit through bodice  
Swingy tiered skirt  
Above the knee length  
(35.5" HPS)

**Black  
White**

**\$178**



**Gabriela  
45MW630A**

Slub Voile  
(91%Lyocell/9%Linen)  
Embroidered style  
Buttons at front placket  
3/4 length voluminous sleeve  
Easy/slim fit through bodice  
Swingy tiered skirt  
Above the knee length  
(35.5" HPS)

**Black  
White**

**\$178**





**Gabriela**  
**45MW630T**

-----  
Chambray (100% Tencel)  
Embroidered style  
Buttons at front placket  
3/4 length voluminous sleeve  
Easy/slim fit through bodice  
Swingy tiered skirt  
Above the knee length  
(35.5" HPS)

**Blue**

**\$178**



**Wynter**  
**45MW632A**

-----  
Slub Voile  
(91%Lyocell/9%Linen)  
Embroidered style  
Buttons at front neck  
Smocking neckline  
Raglan puff sleeve  
Smocked cuff above elbow  
Tie belt at waist  
Swing skirt  
Ankle length: (51" HPS)

**Black**  
**White**

**\$208**

\*Note: Samples are too long, they will be ankle length in production.



**Wynter**  
**45MW632A**

-----  
Slub Voile  
(91%Lyocell/9%Linen)  
Embroidered style  
Buttons at front neck  
Smocking neckline  
Raglan puff sleeve  
Smocked cuff above elbow  
Tie belt at waist  
Swing skirt  
Ankle length: (51" HPS)

**Black**  
**White**

**\$208**

\*Note: Samples are too long, they will be ankle length in production.





**Wynter  
45MW632T**

-----  
Chambray (100% Tencel)  
Embroidered style  
Buttons at front neck  
Smocking neckline  
Raglan puff sleeve  
Smocked cuff above elbow  
Tie belt at waist  
Swing skirt  
Ankle length: (51" HPS)

**Blue**

**\$208**

\*Note: Samples are too long, they will be ankle length in production.





May Flowers

**Amina**  
**45WR240A**

-----  
Washed chiffon  
(70% rayon/30% silk)  
Jersey lining  
(95% viscose/  
5% spandex)  
Ruffle & tie at neck  
Double layer flounce sleeve  
Hip length  
with curved hem

**Green**

**\$88**



**Remington**  
**45WR242A**

-----  
Washed charmeuse  
(100% polyester)  
Long sleeve  
with smocked cuff  
Pleated ruffles throughout  
Tie at front neck  
Hip length  
with curved hem

**Green**  
**Orange**

**\$88**



**Remington  
45WR242A**

Washed charmeuse  
(100% polyester)  
Long sleeve  
with smocked cuff  
Pleated ruffles throughout  
Tie at front neck  
Hip length  
with curved hem

**Green  
Orange**

**\$88**



**Remington  
45WR242S**

Washed charmeuse  
(100% polyester)  
Long sleeve  
with smocked cuff  
Pleated ruffles throughout  
Tie at front neck  
Hip length  
with curved hem

**Black  
Ivory  
Olive  
Rust**

**\$78**



**Remington  
45WR242S**

Washed charmeuse  
(100% polyester)  
Long sleeve  
with smocked cuff  
Pleated ruffles throughout  
Tie at front neck  
Hip length  
with curved hem

**Black  
Ivory  
Olive  
Rust**

**\$78**





**Remington  
45WR242S**

Washed charmeuse  
(100% polyester)  
Long sleeve  
with smocked cuff  
Pleated ruffles throughout  
Tie at front neck  
Hip length  
with curved hem

**Black  
Ivory  
Olive  
Rust**

**\$78**

**Remington  
45WR242S**

Washed charmeuse  
(100% polyester)  
Long sleeve  
with smocked cuff  
Pleated ruffles throughout  
Tie at front neck  
Hip length  
with curved hem

**Black  
Ivory  
Olive  
Rust**

**\$78**



**Macie  
45WR410S**

Washed charmeuse  
(100% Polyester)  
Waistband  
with smocked back  
Invisible zipper at back  
Soft flex belt at waist  
Below the knee length

**Black**

**\$98**



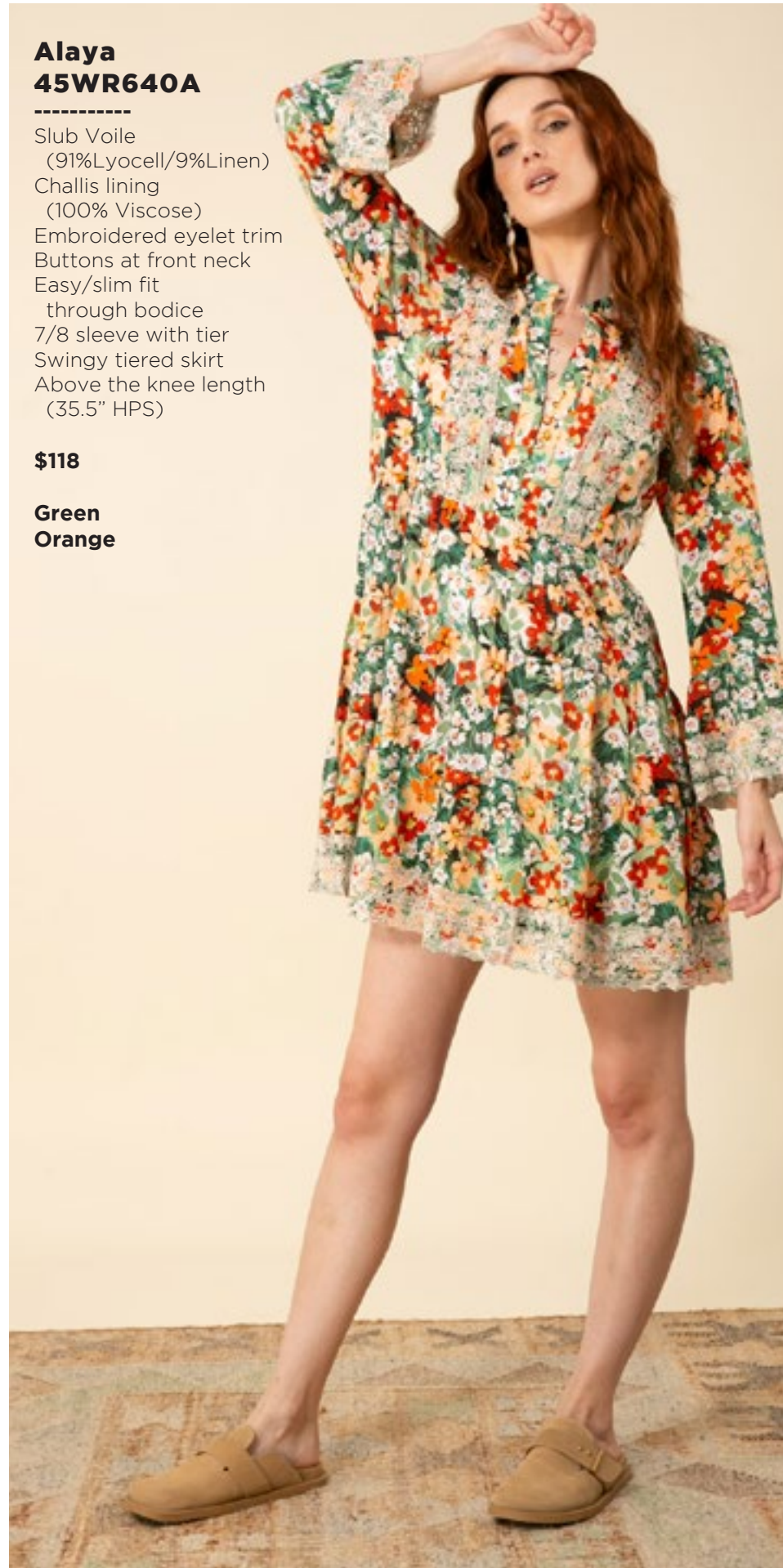


**Alaya  
45WR640A**

-----  
Slub Voile  
(91%Lyocell/9%Linen)  
Challis lining  
(100% Viscose)  
Embroidered eyelet trim  
Buttons at front neck  
Easy/slim fit  
through bodice  
7/8 sleeve with tier  
Swingy tiered skirt  
Above the knee length  
(35.5" HPS)

**\$118**

**Green  
Orange**



**Dream  
45WR642A**

-----  
Chiffon  
(100% polyester)  
Smocking & ruffle at neck  
Hook & eye at front neck  
Elastic smocked waist  
Balloon sleeve  
with elastic inside  
Tiered skirt  
with slit at lower tiers  
Ankle length at front  
with High/low hem  
(49" at front, 52" at back)

**Green  
Orange**

**\$128**







**Dream  
45WR642A**  
-----

Chiffon  
(100% polyester)  
Smocking & ruffle at neck  
Hook & eye at front neck  
Elastic smocked waist  
Balloon sleeve  
with elastic inside  
Tiered skirt  
with slit at lower tiers  
Ankle length at front  
with High/low hem  
(49" at front, 52" at back)

**Green  
Orange**

**\$128**



**Ariyah  
45WR644A**  
-----

Washed charmeuse  
(100% polyester)  
Pleated double layer sleeve  
and ruffles throughout  
Buttons at front keyhole  
with tie neck  
Drop waist, elastic  
at high hip  
Tiered swingy skirt  
Above the knee  
(35" HPS)

**Green**

**\$118**

**Ariyah  
45WR644D**

Washed charmeuse  
(100% polyester)  
Pleated double layer sleeve  
and ruffles throughout  
Buttons at front keyhole  
with tie neck  
Drop waist, elastic  
at high hip  
Tiered swingy skirt  
Below the knee  
(41" HPS)

**Green  
Orange**

**\$128**



**Ariyah  
45WR644D**

Washed charmeuse  
(100% polyester)  
Pleated double layer sleeve  
and ruffles throughout  
Buttons at front keyhole  
with tie neck  
Drop waist, elastic  
at high hip  
Tiered swingy skirt  
Below the knee  
(41" HPS)

**Green  
Orange**

**\$128**



**Alexandria  
45WR646A**

Washed charmeuse  
(100% polyester)  
Pleated double layer sleeve  
and ruffles throughout  
Buttons at front keyhole  
with tie neck  
Drop waist, elastic  
at high hip  
Tiered swingy skirt  
Above the knee  
(35" HPS)

**Black  
Ivory  
Olive  
Rust**

**\$108**





**Alexandria  
45WR646A**

Washed charmeuse  
(100% polyester)  
Pleated double layer sleeve  
and ruffles throughout  
Buttons at front keyhole  
with tie neck  
Drop waist, elastic  
at high hip  
Tiered swingy skirt  
Above the knee  
(35" HPS)

**Black  
Ivory  
Olive  
Rust**

**\$108**



**Alexandria  
45WR646A**

Washed charmeuse  
(100% polyester)  
Pleated double layer sleeve  
and ruffles throughout  
Buttons at front keyhole  
with tie neck  
Drop waist, elastic  
at high hip  
Tiered swingy skirt  
Above the knee  
(35" HPS)

**Black  
Ivory  
Olive  
Rust**

**\$108**



**Alexandria  
45WR646A**

Washed charmeuse  
(100% polyester)  
Pleated double layer sleeve  
and ruffles throughout  
Buttons at front keyhole  
with tie neck  
Drop waist, elastic  
at high hip  
Tiered swingy skirt  
Above the knee  
(35" HPS)

**Black  
Ivory  
Olive  
Rust**

**\$108**



**Alexandria  
45WR646D**

Washed charmeuse  
(100% polyester)  
Pleated double layer sleeve  
and ruffles throughout  
Buttons at front keyhole  
with tie neck  
Drop waist, elastic  
at high hip  
Tiered swingy skirt  
Below the knee  
(41" HPS)

**Black  
Ivory  
Olive  
Rust**

**\$118**



**Alexandria  
45WR646D**

Washed charmeuse  
(100% polyester)  
Pleated double layer sleeve  
and ruffles throughout  
Buttons at front keyhole  
with tie neck  
Drop waist, elastic  
at high hip  
Tiered swingy skirt  
Below the knee  
(41" HPS)

**Black  
Ivory  
Olive  
Rust**

**\$118**



**Alexandria  
45WR646D**

Washed charmeuse  
(100% polyester)  
Pleated double layer sleeve  
and ruffles throughout  
Buttons at front keyhole  
with tie neck  
Drop waist, elastic  
at high hip  
Tiered swingy skirt  
Below the knee  
(41" HPS)

**Black  
Ivory  
Olive  
Rust**

**\$118**



**Alexandria  
45WR646D**

Washed charmeuse  
(100% polyester)  
Pleated double layer sleeve  
and ruffles throughout  
Buttons at front keyhole  
with tie neck  
Drop waist, elastic  
at high hip  
Tiered swingy skirt  
Below the knee  
(41" HPS)

**Black  
Ivory  
Olive  
Rust**

**\$118**



# Frame Worthy



**Willa**  
**45YF250A**

Washed chiffon  
(70% rayon/30% silk)  
Body is lined  
(95% viscose/  
5% spandex jersey)  
Voluminous balloon sleeve  
with smocked cuff  
Smocking at opening  
Hip length  
with curved hem

**Blue**  
**Pink**

**\$98**



**Willa**  
**45YF250A**

Washed chiffon  
(70% rayon/30% silk)  
Body is lined  
(95% viscose/  
5% spandex jersey)  
Voluminous balloon sleeve  
with smocked cuff  
Smocking at opening  
Hip length  
with curved hem

**Blue**  
**Pink**

**\$98**



**Avianna**  
**45YF252A**

Twill  
(55% viscose/  
45% rayon)  
3/4 length sleeve  
with cuff  
Buttons at front  
Oversized scarf shirt  
drapes at the sides

**Blue**  
**Pink**

**\$78**



**Avianna**  
**45YF252A**

-----  
Twill  
(55% viscose/  
45% rayon)  
3/4 length sleeve  
with cuff  
Buttons at front  
Oversized scarf shirt  
drapes at the sides

**Blue**  
**Pink**

**\$78**



**Makayla**  
**45YF254A**

-----  
Twill  
(55% viscose/  
45% rayon)  
Buttons at front  
Voluminous long sleeve  
with cuff  
Low hip length  
with curved hem

**Blue**  
**Pink**

**\$88**



**Makayla**  
**45YF254A**

-----  
Twill  
(55% viscose/  
45% rayon)  
Buttons at front  
Voluminous long sleeve  
with cuff  
Low hip length  
with curved hem

**Blue**  
**Pink**

**\$88**







**Gracelyn  
45YF550A**

-----  
Twill  
(55% viscose/45% rayon)  
Buttons at front waist  
with hidden zipper  
under front panel  
Pockets at hips  
High Waist  
(13" rise including  
waistband)  
Wide voluminous  
flared leg  
Full length pant  
(30.5" inseam)

**Blue  
Pink**

**\$108**



**Gracelyn  
45YF550A**

-----  
Twill  
(55% viscose/45% rayon)  
Buttons at front waist  
with hidden zipper  
under front panel  
Pockets at hips  
High Waist  
(13" rise including  
waistband)  
Wide voluminous  
flared leg  
Full length pant  
(30.5" inseam)

**Blue  
Pink**

**\$108**



**Elle  
45YF650A**

Washed silk charmeuse  
(25% silk/75% viscose)  
Hidden button placket  
at front  
Long sleeve with cuff  
Sleeve tab to adjust length  
Slim easy fit through body  
Swingy skirt  
with slight hi/low  
Above the knee length  
(35.5"HPS)

**Blue  
Pink**

**\$128**



**Elle  
45YF650A**

Washed silk charmeuse  
(25% silk/75% viscose)  
Hidden button placket  
at front  
Long sleeve with cuff  
Sleeve tab to adjust length  
Slim easy fit through body  
Swingy skirt  
with slight hi/low  
Above the knee length  
(35.5"HPS)

**Blue  
Pink**

**\$128**



**Amiyah  
45YF652A**

Matte jersey  
(96% polyester/  
4% spandex)  
Mesh lining  
(92% nylon/8% spandex)  
Pleat at CF under placket  
Pockets at hips  
3/4 Length bell sleeve  
Deep hem  
added for length  
Above the knee  
(35" HPS)

**Blue  
Pink**

**\$98**

**Amiyah  
45YF652A**

Matte jersey  
(96% polyester/  
4% spandex)  
Mesh lining  
(92% nylon/8% spandex)  
Pleat at CF under placket  
Pockets at hips  
3/4 Length bell sleeve  
Deep hem  
added for length  
Above the knee  
(35" HPS)

**Blue  
Pink**

**\$98**



**Amiyah  
45YF652D**

Matte jersey  
(96% polyester/  
4% spandex)  
Mesh lining  
(92% nylon/8% spandex)  
Pleat at CF under placket  
Pockets at hips  
3/4 Length bell sleeve  
Deep hem  
added for length  
Below the knee  
(41" HPS)

**Blue  
Pink**

**\$108**



**Amiyah  
45YF652D**

Matte jersey  
(96% polyester/  
4% spandex)  
Mesh lining  
(92% nylon/8% spandex)  
Pleat at CF under placket  
Pockets at hips  
3/4 Length bell sleeve  
Deep hem  
added for length  
Below the knee  
(41" HPS)

**Blue  
Pink**

**\$108**





**Elianna  
45YF654A**

Lightweight washed linen  
(100% linen)  
Body is lined  
(100% viscose)  
Buttons at front body:  
only the top  
and lower skirt  
buttons are functional.  
Invisible zipper at back  
Puff sleeve with elastic  
Slim fit through body  
Slim top skirt with ruffle  
Tie belt at waist  
Above the knee  
(35" HPS)

**Blue  
Pink**

**\$148**



**Elianna  
45YF654A**

Lightweight washed linen  
(100% linen)  
Body is lined  
(100% viscose)  
Buttons at front body:  
only the top  
and lower skirt  
buttons are functional.  
Invisible zipper at back  
Puff sleeve with elastic  
Slim fit through body  
Slim top skirt with ruffle  
Tie belt at waist  
Above the knee  
(35" HPS)

**Blue  
Pink**

**\$148**



**Elianna  
45YF654M**

Lightweight washed linen  
(100% linen)  
Body is lined  
(100% viscose)  
Buttons at front body:  
only the top  
and lower skirt  
buttons are functional.  
Invisible zipper at back  
Puff sleeve with elastic  
Slim fit through body  
Slim top skirt with ruffle  
Tie belt at waist  
Ankle length:  
(51" HPS)

**Blue  
Pink**

**\$188**

\*Note: Samples are too  
long, they will be ankle  
length in production.

**Elianna**  
**45YF654M**

Lightweight washed linen  
(100% linen)  
Body is lined  
(100% viscose)  
Buttons at front body:  
only the top  
and lower skirt  
buttons are functional.  
Invisible zipper at back  
Puff sleeve with elastic  
Slim fit through body  
Slim top skirt with ruffle  
Tie belt at waist  
Ankle length:  
(51" HPS)

**Blue**  
**Pink**

**\$188**

\*Note: Samples are too  
long, they will be ankle  
length in production.



**Maddison**  
**45YF980A**

Silk Habotai  
36" Square

**Blue**  
**Pink**

**\$44**

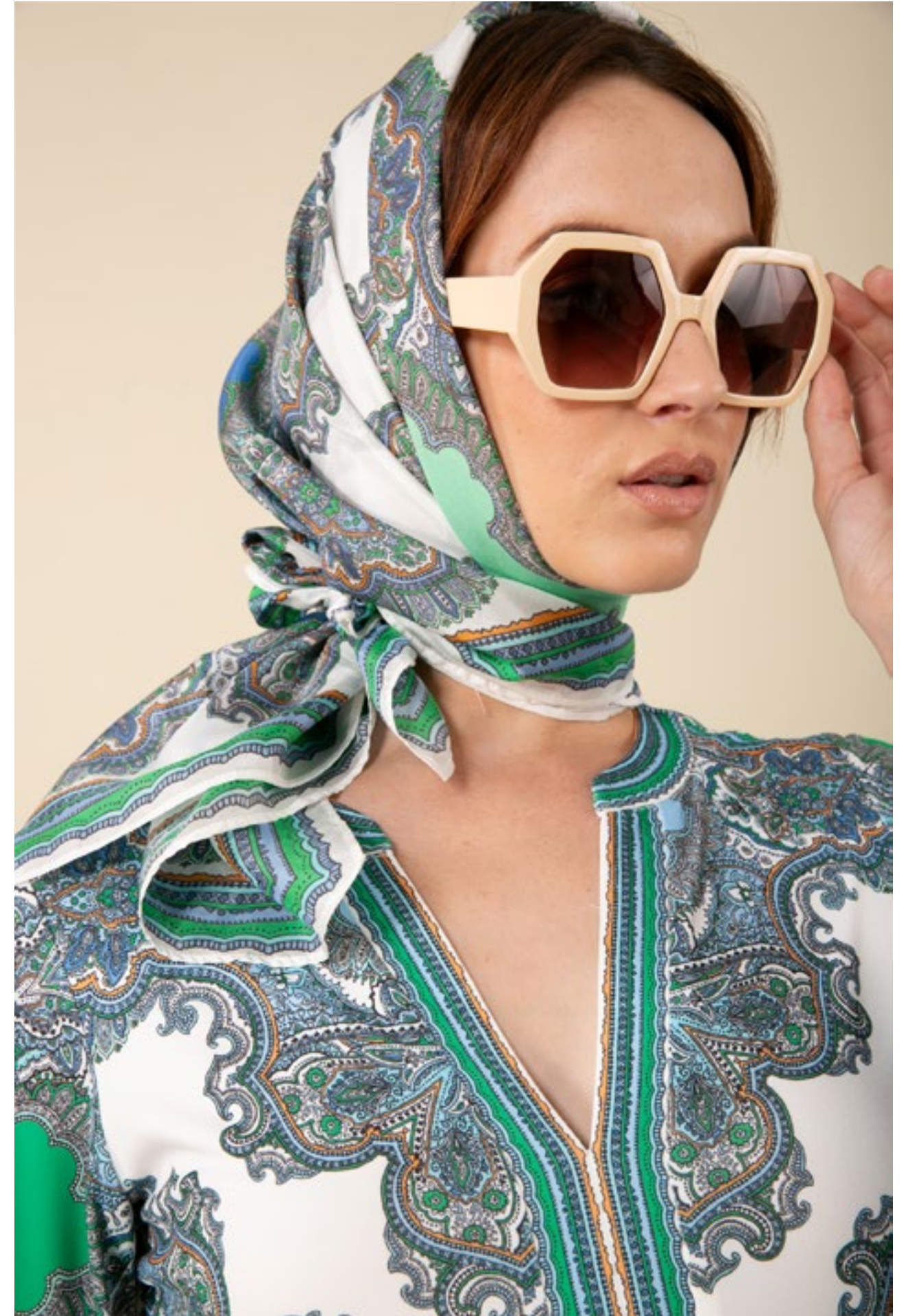


**Maddison**  
**45YF980A**

-----  
Silk Habotai  
36" Square

**Blue**  
**Pink**

**\$44**





This book is a presentation of a selection of Hale Bob product and is correct at time of publication.

To view the entire collection of products including updates and additions. You can view product line sheets at halebob.com by logging into the "Merchant" section of our website.

Prices and products posted in this book are current at time of publication but are subject to change.

Sales Director  
East Coast  
South

Cathy Cooley  
310-963-2463  
cathy@halebob.com

Sales Executive  
Latin America  
West Coast

Isabela Peralta  
323-394-1739  
isabela@halebob.com

Sales Executive  
Southwest  
Midwest

Tracy Holden  
214-454-1176  
tracy@halebob.com

**For Marketing & Press Inquiries:**

Marianna Gunther  
marianna@halebob.com

**HALE BOB**  
LOS ANGELES

