



HALE BOB

LOS ANGELES
Season 4

Earth Bound





**Milani
44EA210A**

Stretch jersey
(95% viscose/
5% spandex)
Eyelet ruffles
at shoulders
Slim easy fit
Hip length

**Beige
Pink**



**Milani
44EA210A**

Stretch jersey
(95% viscose/
5% spandex)
Eyelet ruffles
at shoulders
Slim easy fit
Hip length

**Beige
Pink**

Talia
44EA212A

Slub voile
(91%Lyocell/9%Linen)
Pleat detailing
at sleeve & yokes
Puff short sleeve
with smocked cuff
Hip length

Beige
Pink



Rebecca
44EA410A

Slub voile
(91%Lyocell/9%Linen)
Lining
(100% viscose)
Pockets at hips
Flat waistband
with smocked insert
at back for easy fit
Invisible zipper at back
High waist, full length skirt
(42" length from top of
waist to hem)

Beige
Pink

Talia
44EA212A

Slub voile
(91%Lyocell/9%Linen)
Pleat detailing
at sleeve & yokes
Puff short sleeve
with smocked cuff
Hip length

Beige
Pink



Rebecca
44EA410A

Slub voile
(91%Lyocell/9%Linen)
Lining
(100% viscose)
Pockets at hips
Flat waistband
with smocked insert
at back for easy fit
Invisible zipper at back
High waist, full length skirt
(42" length from top of
waist to hem)

Beige
Pink



**Kendall
44EA610A**

Matte jersey
(96% polyester/
4% spandex)
V-neck at front
Pockets at hips
3/4 length bell sleeve
Easy a-line body
Above the knee length
(35.5" HPS)

**Beige
Pink**



**Kendall
44EA610A**

Matte jersey
(96% polyester/
4% spandex)
V-neck at front
Pockets at hips
3/4 length bell sleeve
Easy a-line body
Above the knee length
(35.5" HPS)

**Beige
Pink**



**Harley
44EA612A**

Slub voile
(91%Lyocell/9%Linen)
Lining
(100% viscose)
Buttons at front neck
Eyelet detailing
throughout body
3/4 length sleeve
with ruffle
Tiered voluminous skirt
Above the knee length
(35.5" HPS)

**Beige
Pink**



**Harley
44EA612A**

Slub voile
(91%Lyocell/9%Linen)
Lining
(100% viscose)
Buttons at front neck
Eyelet detailing
throughout body
3/4 length sleeve
with ruffle
Tiered voluminous skirt
Above the knee length
(35.5" HPS)

**Beige
Pink**



**Lia
44EA614A**

Crepe de chine
(100% viscose)
Ruffle with smocking
at neck
Deep keyhole at front
with buttons
Elastic at waist
with self tie
Tiered voluminous skirt
Pockets at hips
Maxi length
(58" HPS)

**Beige
Pink**



**Lia
44EA614A**

Crepe de chine
(100% viscose)
Ruffle with smocking
at neck
Deep keyhole at front
with buttons
Elastic at waist
with self tie
Tiered voluminous skirt
Pockets at hips
Maxi length
(58" HPS)

**Beige
Pink**



A woman with voluminous dark curly hair stands in a lush garden. She is wearing a white short-sleeved top with intricate lace detailing and high-waisted, wide-leg trousers in a light cream color. Her right leg is raised and bent at the knee, with the hem of her trousers billowing out. She is wearing light-colored flat shoes. The background features a dense green hedge with small white flowers, several tree trunks, and a window with a blue frame. The ground is paved with reddish-brown stones.

Love
In The
Air



**Phoenix
44LR220A**

Washed Voile
(30% silk/70% cotton)
Jersey cami lining
(95% viscose/
5% spandex)
Spaghetti tie
at neckline
Deep keyhole
with buttons
Long sleeve with eyelet
trim detailing

**Ivory
Orange**



**Phoenix
44LR220A**

Washed Voile
(30% silk/70% cotton)
Jersey cami lining
(95% viscose/
5% spandex)
Spaghetti tie
at neckline
Deep keyhole
with buttons
Long sleeve with eyelet
trim detailing

**Ivory
Orange**

Dahlia
44LR222A

Washed Georgette
(100% viscose)
Jersey lining
(95% viscose/
5% spandex)
Short sleeve
with folded ruffle detail
Hip length
with curved hem

Ivory
Orange



Dahlia
44LR222A

Washed Georgette
(100% viscose)
Jersey lining
(95% viscose/
5% spandex)
Short sleeve
with folded ruffle detail
Hip length
with curved hem

Ivory
Orange





**Jayla
44LR620A**

Matte jersey
(96% polyester/
4% spandex)
Mesh lining
(95% nylon/5% spandex)
Keyhole at back neck
with button
Slim easy fit
Above the knee length
(35.5" HPS)

**Ivory
Orange**



**Jayla
44LR620A**

Matte jersey
(96% polyester/
4% spandex)
Mesh lining
(95% nylon/5% spandex)
Keyhole at back neck
with button
Slim easy fit
Above the knee length
(35.5" HPS)

**Ivory
Orange**

**Brooklynn
44LR622A**

Washed chiffon
(70% rayon/30% silk)
Lining
(100% viscose)
Buttons at center
front neck
Flat waistband
with smocked insert
at back
Invisible zipper at back
Long sleeve
with smocked cuff
Above the knee length
(35.5" HPS)

**Ivory
Orange**



**Brooklynn
44LR622A**

Washed chiffon
(70% rayon/30% silk)
Lining
(100% viscose)
Buttons at center
front neck
Flat waistband
with smocked insert
at back
Invisible zipper at back
Long sleeve
with smocked cuff
Above the knee length
(35.5" HPS)

**Ivory
Orange**



Blair
44LR624A

Lightweight linen
(100% linen)
Lining
(100% viscose)
Slim fit through body
Voluminous skirt
with tier
Buttons at lower skirt
Invisible zip at back
Puff sleeve
with elastic and ruffle
Tie belt at waist
Maxi length
(59" HPS)

Ivory
Orange



Blair
44LR624A

Lightweight linen
(100% linen)
Lining
(100% viscose)
Slim fit through body
Voluminous skirt
with tier
Buttons at lower skirt
Invisible zip at back
Puff sleeve
with elastic and ruffle
Tie belt at waist
Maxi length
(59" HPS)

Ivory
Orange



Limited Edition Denim



**Blake
ODEN510A**

Made in the USA
Cotton stretch denim
High waisted fit
(12 3/8" rise including
waistband)
Wide leg with flare
Stitched pin tuck
Side pockets at front
Patch pockets at back
Shipped with 33" inseam
Deep hem to adjust length

Black
Light blue wash
Dark blue wash
White



**Blake
ODEN510A**

Made in the USA
Cotton stretch denim
High waisted fit
(12 3/8" rise including
waistband)
Wide leg with flare
Stitched pin tuck
Side pockets at front
Patch pockets at back
Shipped with 33" inseam
Deep hem to adjust length

Black
Light blue wash
Dark blue wash
White





Blake
ODEN510A

Made in the USA
Cotton stretch denim
High waisted fit
(12 3/8" rise including
waistband)
Wide leg with flare
Stitched pin tuck
Side pockets at front
Patch pockets at back
Shipped with 33" inseam
Deep hem to adjust length

Black
Light blue wash
Dark blue wash
White



Blake
ODEN510A

Made in the USA
Cotton stretch denim
High waisted fit
(12 3/8" rise including
waistband)
Wide leg with flare
Stitched pin tuck
Side pockets at front
Patch pockets at back
Shipped with 33" inseam
Deep hem to adjust length

Black
Light blue wash
Dark blue wash
White





In Bloom

**Vivienne
44MB230A**

Georgette
(100% Rayon)
Tiered body
Laceup at front neck
Adjustable halter straps
Low hip length

**Pink Floral
Purple Paisley**



**Vivienne
44MB230A**

Georgette
(100% Rayon)
Tiered body
Laceup at front neck
Adjustable halter straps
Low hip length

**Pink Floral
Purple Paisley**



**Hallie
44MB232A**

Silk Cotton Voile
(30% silk/70% cotton)
Jersey cami lining
(95% viscose/
5% spandex)
Ruffle at neck,
deep keyhole
with buttons
Long sleeve
with elastic & ruffle
Hip length

**Pink Floral
Purple Paisley**





**Hallie
44MB232A**

Silk Cotton Voile
(30% silk/70% cotton)
Jersey cami lining
(95% viscose/
5% spandex)
Ruffle at neck,
deep keyhole
with buttons
Long sleeve
with elastic & ruffle
Hip length

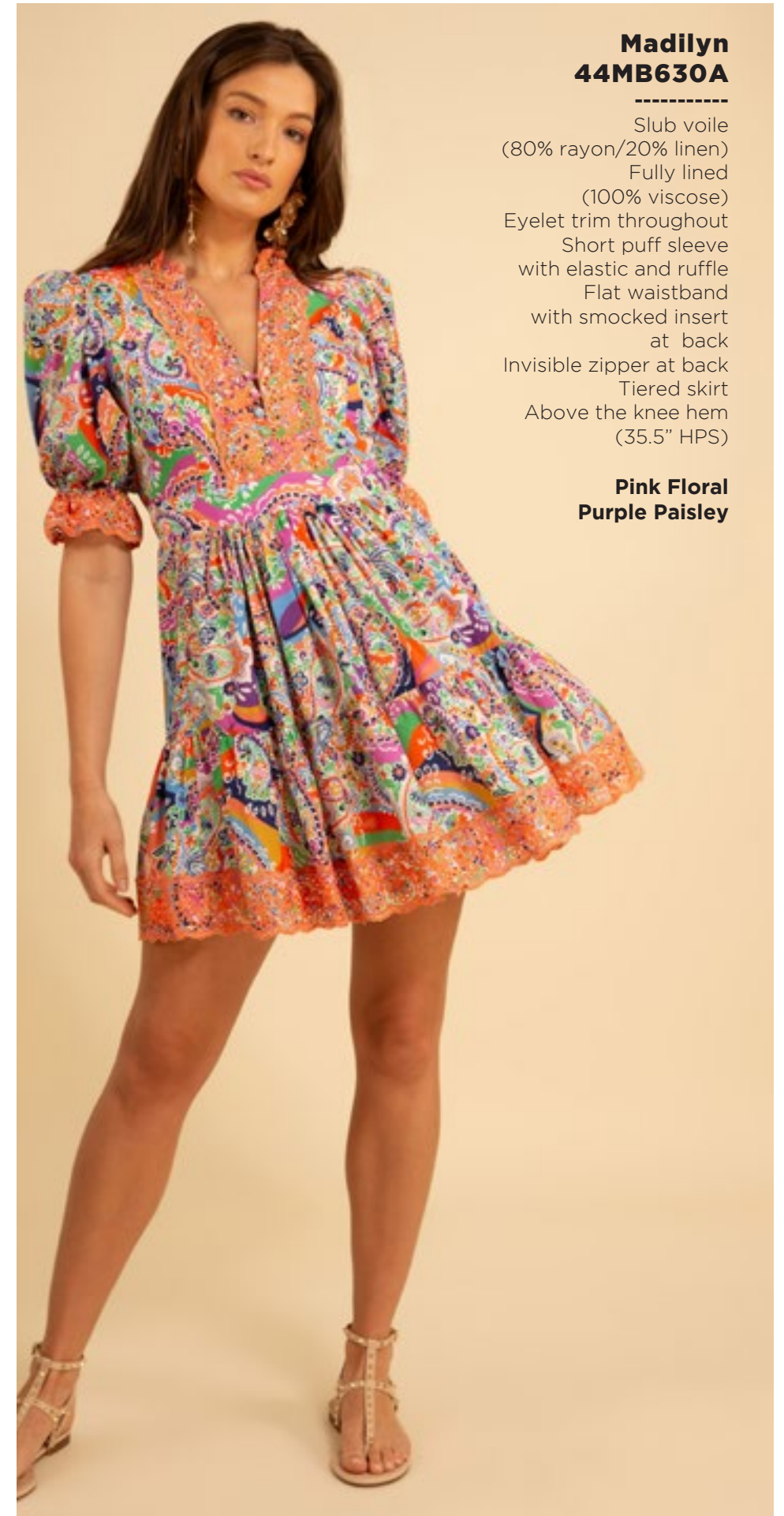
**Pink Floral
Purple Paisley**



**Madilyn
44MB630A**

Slub voile
(80% rayon/20% linen)
Fully lined
(100% viscose)
Eyelet trim throughout
Short puff sleeve
with elastic and ruffle
Flat waistband
with smocked insert
at back
Invisible zipper at back
Tiered skirt
Above the knee hem
(35.5" HPS)

**Pink Floral
Purple Paisley**



**Madilyn
44MB630A**

Slub voile
(80% rayon/20% linen)
Fully lined
(100% viscose)
Eyelet trim throughout
Short puff sleeve
with elastic and ruffle
Flat waistband
with smocked insert
at back
Invisible zipper at back
Tiered skirt
Above the knee hem
(35.5" HPS)

**Pink Floral
Purple Paisley**

**Mckenna
44MB632A**

Heavy stretch jersey
(95% rayon/5% spandex)
Halter cross front neckline
Shirring at front &
back body
Gusset inserts create
voluminous skirt
Midi length
(46" HPS)

**Pink Floral
Purple Paisley**



**Mckenna
44MB632A**

Heavy stretch jersey
(95% rayon/5% spandex)
Halter cross front neckline
Shirring at front &
back body
Gusset inserts create
voluminous skirt
Midi length
(46" HPS)

**Pink Floral
Purple Paisley**





**Ophelia
44MB634A**

Washed chiffon
(70% rayon/30% silk)
Jersey lining
(95% viscose/
5% spandex)
Pleating at front
bodice & skirt
Pockets at hips
Sleeve with smocking
above elbow with
long ruffle
Maxi length
(58" HPS)

**Pink Floral
Purple Paisley**



**Ophelia
44MB634A**

Washed chiffon
(70% rayon/30% silk)
Jersey lining
(95% viscose/
5% spandex)
Pleating at front
bodice & skirt
Pockets at hips
Sleeve with smocking
above elbow with
long ruffle
Maxi length
(58" HPS)

**Pink Floral
Purple Paisley**







On The Horizon



Evelynn
44ZN240A

Washed chiffon
(70% rayon/30% silk)
Jersey lining
(95% viscose/
5% spandex)
Tiered sleeve ruffle
Tie at neck
Hip length

Ivory
Navy

Evelynn
44ZN240A

Washed chiffon
(70% rayon/30% silk)
Jersey lining
(95% viscose/
5% spandex)
Tiered sleeve ruffle
Tie at neck
Hip length

Ivory
Navy



**Alayah
44ZN242A**

Washed silk charmeuse
(25% silk/75% viscose)
3/4 length sleeve
with cuff
Buttons at front
Oversized scarf shirt
drapes at the sides

**Ivory
Navy**



**Winter
44ZN540A**

Washed silk charmeuse
(25% silk/75% viscose)
Elastic at waist
High waist
(12" front rise including
waistband)
Voluminous flared leg
Pockets at hips
Full length with deep hem
(31" Inseam)

**Ivory
Navy**

**Alayah
44ZN242A**

Washed silk charmeuse
(25% silk/75% viscose)
3/4 length sleeve
with cuff
Buttons at front
Oversized scarf shirt
drapes at the sides

**Ivory
Navy**



**Winter
44ZN540A**

Washed silk charmeuse
(25% silk/75% viscose)
Elastic at waist
High waist
(12" front rise including
waistband)
Voluminous flared leg
Pockets at hips
Full length with deep hem
(31" Inseam)

**Ivory
Navy**

**Catherine
44ZN640A**

Matte jersey
(96% polyester/
4% spandex)
Pockets at hips
Dropped sleeve
Above the knee length
(35.5" HPS)
Deep hem added
to adjust length

44ZN640B

(BEADED)

Hand beading
on neckline

**Ivory
Navy**



**Catherine
44ZN640A**

Matte jersey
(96% polyester/
4% spandex)
Pockets at hips
Dropped sleeve
Above the knee length
(35.5" HPS)
Deep hem added
to adjust length

44ZN640B

(BEADED)

Hand beading
on neckline

**Ivory
Navy**



**Collins
44ZN642A**

Washed poplin
(100% cotton)
Enamel buttons
at front body
7/8 length sleeve
with elastic at opening
Pintuck pleats & crochet
details at body & sleeve
Tie belt at waist
Gussets at skirt, swingy fit
Above the knee length
(36" HPS)

**Ivory
Navy**



Collins
44ZN642A

Washed poplin
(100% cotton)
Enamel buttons
at front body
7/8 length sleeve
with elastic at opening
Pintuck pleats & crochet
details at body & sleeve
Tie belt at waist
Gussets at skirt, swingy fit
Above the knee length
(36" HPS)

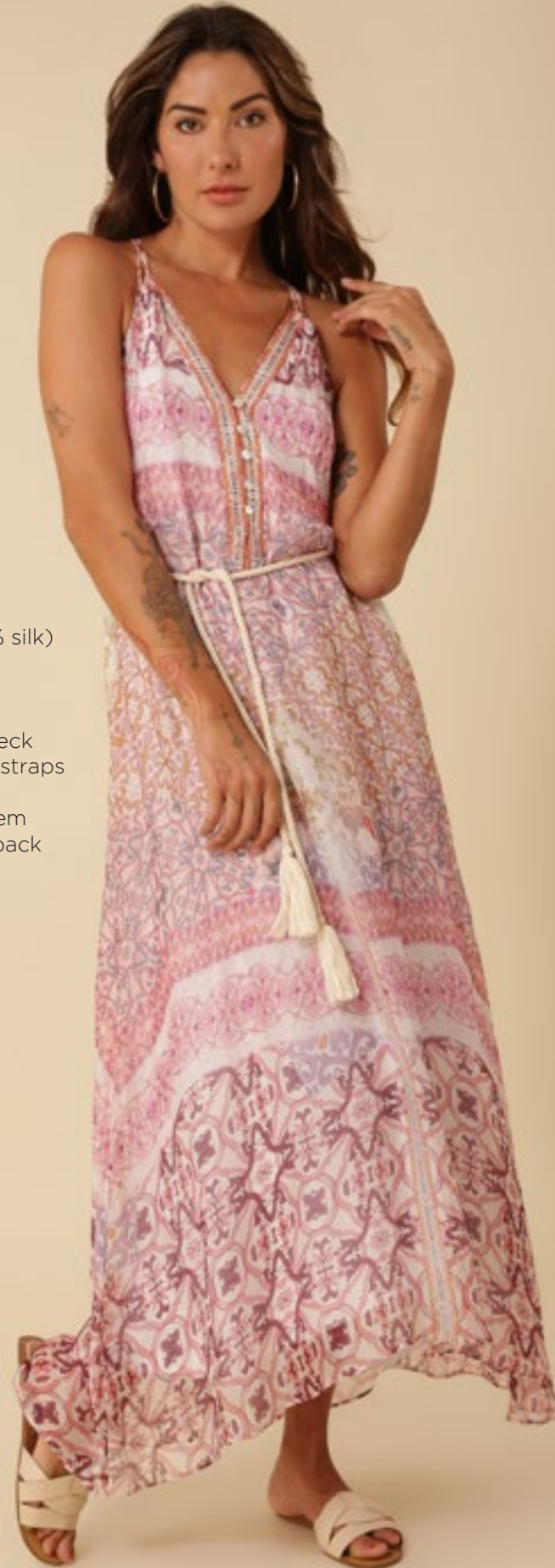
Ivory
Navy



Briella
44ZN644A

Washed chiffon
(70% rayon/30% silk)
Jersey lining
(95% viscose/
5% spandex)
Laceup at front neck
Adjustable halter straps
Long easy fit
Slight high/low hem
(Maxi length at back
58" HPS)

Ivory
Navy



Briella
44ZN644A

Washed chiffon
(70% rayon/30% silk)
Jersey lining
(95% viscose/
5% spandex)
Laceup at front neck
Adjustable halter straps
Long easy fit
Slight high/low hem
(Maxi length at back
58" HPS)

Ivory
Navy





This book is a presentation of a selection of Hale Bob product and is correct at time of publication.

To view the entire collection of products including updates and additions. You can view product line sheets at halebob.com by logging into the "Merchant" section of our website.

Prices and products posted in this book are current at time of publication but are subject to change.

Sales Director

East Coast
South East
Puerto Rico
Canada
Majors

Cathy Cooley

310-963-2463
cathy@halebob.com

Sales Executive

Mexico
Central America
South America

Isabela Peralta

323-394-1739
isabela@halebob.com

Sales Executive

Midwest

Tracy Holden

214-454-1176
tracy@halebob.com

For Marketing & Press Inquiries:

Marianna Gunther
marianna@halebob.com

HALE BOB
LOS ANGELES

