



# HALE BOB

LOS ANGELES  
Season 3



Birds  
of  
Paradise

**Kayla  
43DS210A**

Washed linen  
(100% linen)  
Sheer crochet insert  
at sleeve  
Voluminous sleeve  
with pleating  
at the shoulder,  
smocked wrist  
Hip length  
with curved hem

**Black & White  
Pink**

**\$128**



**Kayla  
43DS210A**

Washed linen  
(100% linen)  
Sheer crochet insert  
at sleeve  
Voluminous sleeve  
with pleating  
at the shoulder,  
smocked wrist  
Hip length  
with curved hem

**Black & White  
Pink**

**\$128**



**Malia  
43DS212A**

Stretch Jersey  
(95% viscose/  
5% spandex)  
Ruffles at armhole &  
neck spaghetti ties  
at neck  
Trim detailing  
Hip length  
with curved hem

**Black & White  
Pink**

**\$68**





**Malia  
43DS212A**

Stretch Jersey  
(95% viscose/  
5% spandex)  
Ruffles at armhole &  
neck spaghetti ties  
at neck  
Trim detailing  
Hip length  
with curved hem

**Black & White  
Pink**

**\$68**



**Saylor  
43DS214A**

Embroidered washed linen  
(100% linen)  
Ruffle at neckline  
Deep keyhole  
with buttons  
Long sleeve with elastic  
& ruffle at wrist

**White/Gold  
White/Turquoise**

**\$128**



**Saylor  
43DS214A**

Embroidered washed linen  
(100% linen)  
Ruffle at neckline  
Deep keyhole  
with buttons  
Long sleeve with elastic  
& ruffle at wrist

**White/Gold  
White/Turquoise**

**\$128**



**Alayna  
43DS510A**

Washed linen  
(100% linen)  
Buttons at front waist  
with hidden zipper  
under front panel  
High Waist  
(13" rise including  
waistband)  
Wide voluminous flared leg  
Full length pant  
(30.5" inseam)

**Black & White  
Pink**

**\$148**



**Alayna  
43DS510A**

Washed linen  
(100% linen)  
Buttons at front waist  
with hidden zipper  
under front panel  
High Waist  
(13" rise including  
waistband)  
Wide voluminous flared leg  
Full length pant  
(30.5" inseam)

**Black & White  
Pink**

**\$148**



**Alayna  
43DS510S**

Washed linen  
(100% linen)  
Buttons at front waist  
with hidden zipper  
under front panel  
High Waist  
(13" rise including  
waistband)  
Wide voluminous flared leg  
Full length pant  
(30.5" inseam)

**Beige  
White**

**\$138**



**Alayna  
43DS510S**

Washed linen  
(100% linen)  
Buttons at front waist  
with hidden zipper  
under front panel  
High Waist  
(13" rise including  
waistband)  
Wide voluminous  
flared leg  
Full length pant  
(30.5" inseam)

**Beige  
White**

**\$138**





**Daniela  
43DS610A  
(Short Length)**

-----  
Washed linen  
(100% linen)  
Fully lined  
(100% viscose)  
Enamel buttons  
at front body  
Large button detailing  
Covered belt included  
Dropped sleeve  
Above the knee  
35.5" HPS

**Black & White  
Pink**

**\$158**



**Daniela  
43DS610A  
(Short Length)**

-----  
Washed linen  
(100% linen)  
Fully lined  
(100% viscose)  
Enamel buttons  
at front body  
Large button detailing  
Covered belt included  
Dropped sleeve  
Above the knee  
35.5" HPS

**Black & White  
Pink**

**\$158**



**Daniela  
43DS610D  
(Midi Length)**

-----  
Washed linen  
(100% linen)  
Fully lined  
(100% viscose)  
Enamel buttons  
at front body  
Large button detailing  
Covered belt included  
Dropped sleeve  
Midi length:  
45" HPS

**Black & White  
Pink**

**\$188**



**Daniela**  
**43DS610D**  
**(Midi Length)**

-----  
Washed linen  
(100% linen)  
Fully lined  
(100% viscose)  
Enamel buttons  
at front body  
Large button detailing  
Covered belt included  
Dropped sleeve  
Midi length:  
45" HPS

**Black & White**  
**Pink**

**\$188**



**Jane**  
**43DS612A**  
**(Short Length)**

-----  
Embroidered washed linen  
(100% linen)  
Fully lined  
(100% viscose)  
Enamel buttons  
at front body  
Large button detailing  
Covered belt included  
Dropped sleeve  
Above the knee  
35.5" HPS

**White**

**\$158**





**Jane  
43DS612D  
(Midi Length)**

-----  
Embroidered washed linen  
(100% linen)  
Fully lined  
(100% viscose)  
Enamel buttons  
at front body  
Large button detailing  
Covered belt included  
Dropped sleeve  
Midi length:  
45" HPS

**White**

**\$178**

**Payton  
43DS614A**

-----  
Matte jersey  
(96% polyester/  
4% spandex)  
Mesh lining  
(95% nylon/8% spandex)  
Pleat at CF under placket  
Voluminous sleeve  
with smocked cuff  
above elbow  
Pockets at hips  
Above the knee length  
(35.5" HPS)  
Deep hem added to  
adjust length

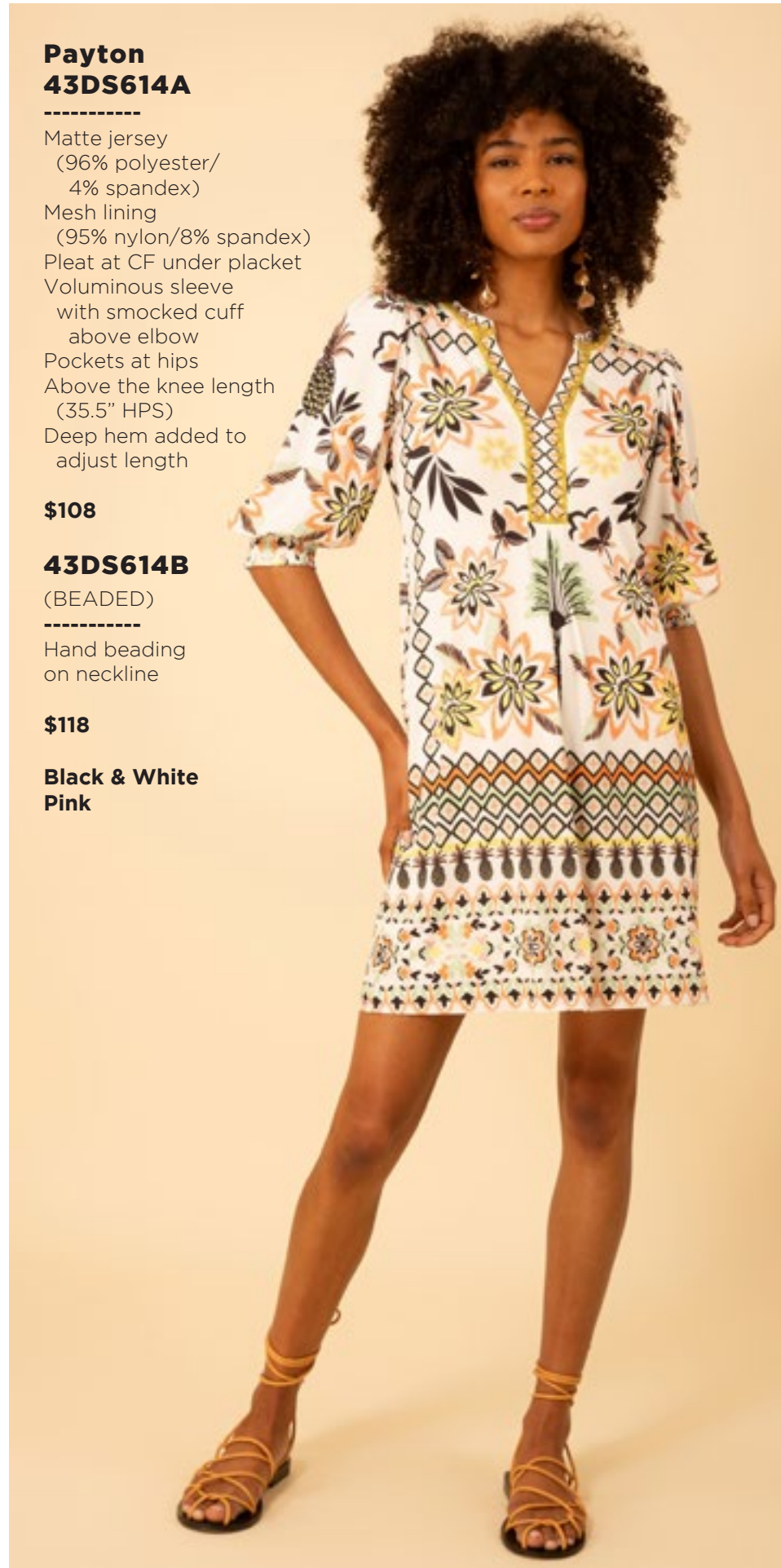
**\$108**

**43DS614B  
(BEADED)**

-----  
Hand beading  
on neckline

**\$118**

**Black & White  
Pink**



**Payton  
43DS614A**

-----  
Matte jersey  
(96% polyester/  
4% spandex)  
Mesh lining  
(95% nylon/8% spandex)  
Pleat at CF under placket  
Voluminous sleeve  
with smocked cuff  
above elbow  
Pockets at hips  
Above the knee length  
(35.5" HPS)  
Deep hem added to  
adjust length

**\$108**

**43DS614B  
(BEADED)**

-----  
Hand beading  
on neckline

**\$118**

**Black & White  
Pink**





**Journey  
43DS616A**

-----  
Embroidered washed linen  
(100% linen)  
Fully lined (100% viscose)  
Bell flutter sleeve  
above elbow  
Waist smocked  
Tiered voluminous skirt  
Pockets at hips  
Maxi length  
(57" HPS)

**White/Gold  
White/Turquoise**

**\$278**



**Journey  
43DS616A**

-----  
Embroidered washed linen  
(100% linen)  
Fully lined (100% viscose)  
Bell flutter sleeve  
above elbow  
Waist smocked  
Tiered voluminous skirt  
Pockets at hips  
Maxi length  
(57" HPS)

**White/Gold  
White/Turquoise**

**\$278**



# Kaleidoscope





**Lilith  
43EK220A**

Washed Voile  
(30% silk/70% cotton)  
Jersey cami lining  
(95% viscose/  
5% spandex)  
Spaghetti tie at neckline  
Deep keyhole  
with buttons  
Long sleeve with eyelet  
trim detailing

**Ivory  
Turquoise**

**\$108**



**Lilith  
43EK220A**

Washed Voile  
(30% silk/70% cotton)  
Jersey cami lining  
(95% viscose/  
5% spandex)  
Spaghetti tie at neckline  
Deep keyhole  
with buttons  
Long sleeve with eyelet  
trim detailing

**Ivory  
Turquoise**

**\$108**



**Delaney  
43EK222A**

Stretch Jersey  
(95% viscose/  
5% spandex)  
V-neck with shirring  
at shoulder  
Smocking & ruffle detail  
at front  
Short sleeve  
with smocked cuff  
Hip length  
with curved hem

**Ivory  
Turquoise**

**\$78**

**Delaney**  
**43EK222A**

-----  
Stretch Jersey  
(95% viscose/  
5% spandex)  
V-neck with shirring  
at shoulder  
Smocking & ruffle detail  
at front  
Short sleeve  
with smocked cuff  
Hip length  
with curved hem

**Ivory**  
**Turquoise**

**\$78**



**Dakota**  
**43EK620A**

-----  
Matte jersey  
(90% polyester/  
10% spandex)  
Pockets at hips  
Dropped sleeve  
Above the knee length  
(35.5" HPS)  
Deep hem added  
to adjust length

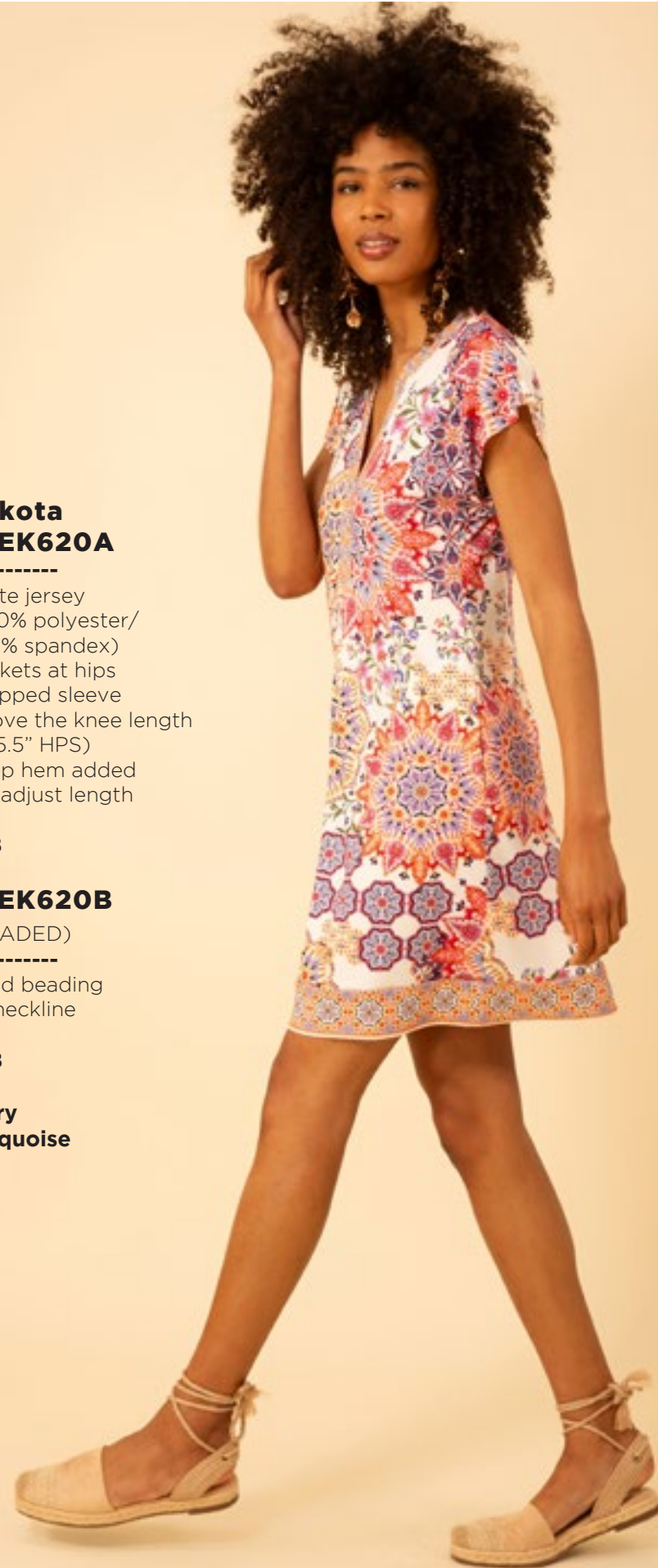
**\$88**

**43EK620B**  
(BEADED)

-----  
Hand beading  
on neckline

**\$98**

**Ivory**  
**Turquoise**



**Dakota**  
**43EK620A**

-----  
Matte jersey  
(90% polyester/  
10% spandex)  
Pockets at hips  
Dropped sleeve  
Above the knee length  
(35.5" HPS)  
Deep hem added  
to adjust length

**\$88**

**43EK620B**  
(BEADED)

-----  
Hand beading  
on neckline

**\$98**

**Ivory**  
**Turquoise**





**Charlee  
43EK622A**

-----  
Crepe de chine  
(100% visocose)  
Eyelet trim  
at neck & sleeve  
Flutter sleeve ends  
above elbow  
Smocked waistband  
Full voluminous skirt  
with gussets  
Maxi length  
(58" HPS)

**Ivory  
Turquoise**

**\$168**

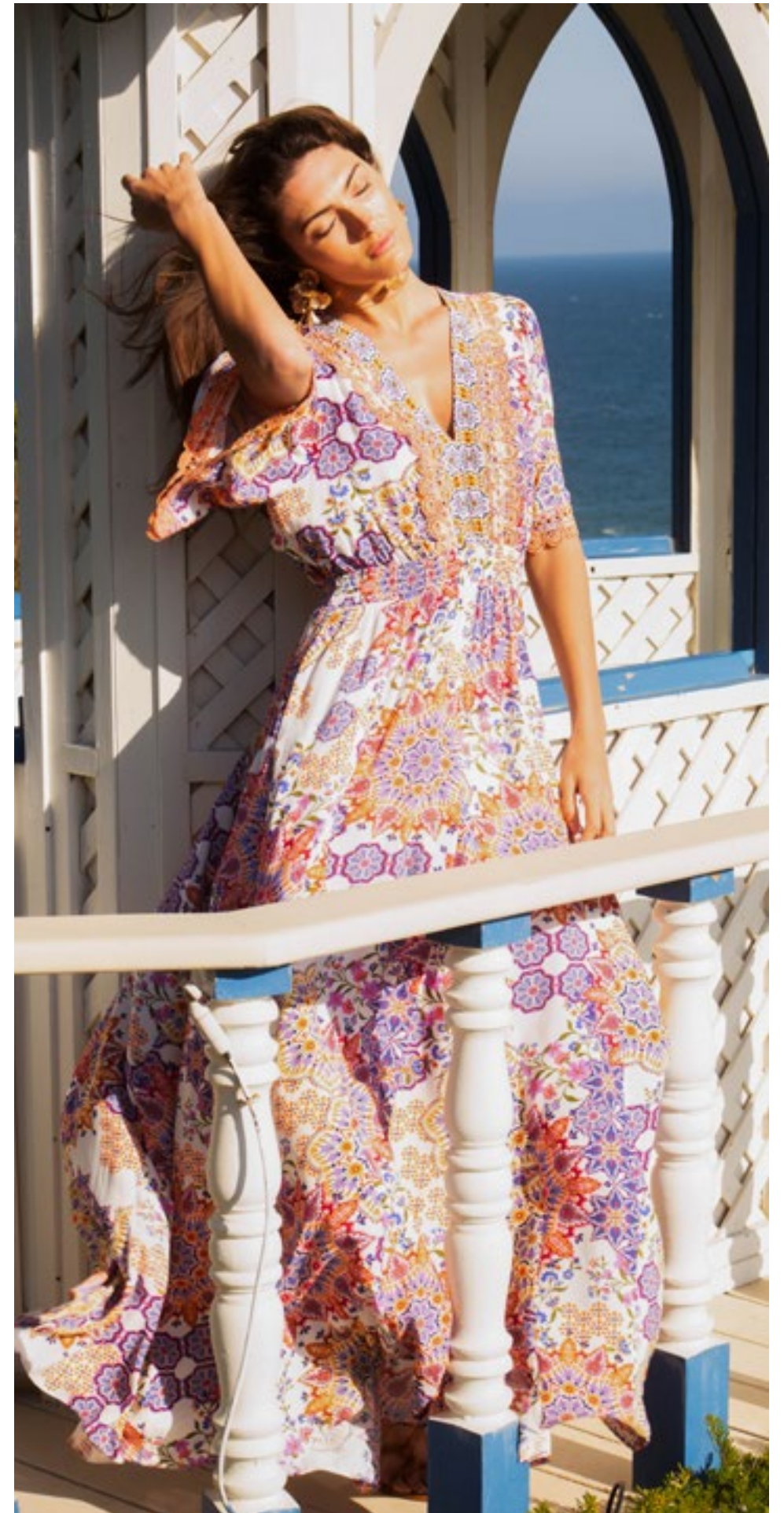


**Charlee  
43EK622A**

-----  
Crepe de chine  
(100% visocose)  
Eyelet trim  
at neck & sleeve  
Flutter sleeve ends  
above elbow  
Smocked waistband  
Full voluminous skirt  
with gussets  
Maxi length  
(58" HPS)

**Ivory  
Turquoise**

**\$168**





Fresh  
Flowers



**Alivia**  
**43FS230A**

Washed Voile  
(30% silk/70% cotton)  
Jersey cami lining  
(95% viscose/  
5% spandex)  
Ruffle & tie at neckline,  
deep keyhole  
with buttons  
Lace detailing  
at body & sleeve  
Hip length  
with curved hem

**Ivory  
Pink**

**\$118**



**Alivia**  
**43FS230A**

Washed Voile  
(30% silk/70% cotton)  
Jersey cami lining  
(95% viscose/  
5% spandex)  
Ruffle & tie at neckline,  
deep keyhole  
with buttons  
Lace detailing  
at body & sleeve  
Hip length  
with curved hem

**Ivory  
Pink**

**\$118**



**Kailani**  
**43FS232A**

Washed georgette  
(100% Rayon)  
Body is lined with print  
Lace overlay  
at sleeve ruffles  
Spaghetti tie  
at front neck  
High hip length  
with curved hem

**Ivory  
Pink**

**\$88**



**Kailani**  
**43FS232A**

Washed georgette  
(100% Rayon)  
Body is lined with print  
Lace overlay  
at sleeve ruffles  
Spaghetti tie  
at front neck  
High hip length  
with curved hem

**Ivory**  
**Pink**

**\$88**



**Annabelle**  
**43FS630A**

Chiffon  
(100% polyester)  
Fully lined with print  
Lace detailing  
throughout body  
Smocking & ruffle at neck  
Hook & eye at front neck  
Elastic smocked waist  
Tiered skirt  
with high/low hem  
Shorter at front,  
maxi length at back  
(58" HPS at back)

**Ivory**  
**Pink**

**\$148**



**Annabelle**  
**43FS630A**

Chiffon  
(100% polyester)  
Fully lined with print  
Lace detailing  
throughout body  
Smocking & ruffle at neck  
Hook & eye at front neck  
Elastic smocked waist  
Tiered skirt  
with high/low hem  
Shorter at front,  
maxi length at back  
(58" HPS at back)

**Ivory**  
**Pink**

**\$148**





**Lucille  
43FS632A**

-----  
Washed georgette  
(100% Rayon)  
Body is lined  
(100% viscose)  
Lining will be 35" HPS  
Lace detailing  
throughout body  
Short placket at front  
with buttons  
Long sleeve  
with smocked cuff  
Self tie included  
Invisible zipper will be  
added at side body  
in production  
Above the knee length  
(35.5" HPS)

**Ivory  
Pink**

**\$148**



**Lucille  
43FS632A**

-----  
Washed georgette  
(100% Rayon)  
Body is lined  
(100% viscose)  
Lining will be 35" HPS  
Lace detailing  
throughout body  
Short placket at front  
with buttons  
Long sleeve  
with smocked cuff  
Self tie included  
Invisible zipper will be  
added at side body  
in production  
Above the knee length  
(35.5" HPS)

**Ivory  
Pink**

**\$148**





**Trinity**  
**43FS634A**

-----  
Stretch Jersey  
(95% viscose/  
5% spandex)  
Elastic under bust  
with tie at waist  
3/4 length balloon sleeve  
with elastic at the opening  
Gussets at skirt create  
voluminous swing skirt  
Above the knee length  
(35.5" HPS)

**Pink**

**\$128**



# Day Dreaming



**Gia**  
**43RG240A**

Washed crepe de chine  
(100% silk)  
3/4 length balloon sleeve  
Hip length  
with curved hem

**Blue**  
**Ivory**

**\$138**



**Gia**  
**43RG240A**

Washed crepe de chine  
(100% silk)  
3/4 length balloon sleeve  
Hip length  
with curved hem

**Blue**  
**Ivory**

**\$138**



**Tatum**  
**43RG242A**

Washed silk charmeuse  
(25% silk/75% viscose)  
Elastic with ruffle at neck  
can be worn on or  
off the shoulder  
Balloon sleeve  
with elastic & ruffle  
Hip length  
with curved hem

**Blue**  
**Ivory**

**\$88**



**Raegan**  
**43RG540A**

Washed silk charmeuse  
(25% silk/75% viscose)  
Elastic at waist  
High waist  
(12" front rise  
including waistband)  
Voluminous flared leg  
Pockets at hips  
Full length  
with deep hem  
(31" Inseam)

**Blue**  
**Ivory**

**\$118**



**Tatum  
43RG242A**

Washed silk charmeuse  
(25% silk/75% viscose)  
Elastic with ruffle at neck  
can be worn on or  
off the shoulder  
Balloon sleeve  
with elastic & ruffle  
Hip length  
with curved hem

**Blue  
Ivory**

**\$88**

**Raegan  
43RG540A**

Washed silk charmeuse  
(25% silk/75% viscose)  
Elastic at waist  
High waist  
(12" front rise  
including waistband)  
Voluminous flared leg  
Pockets at hips  
Full length  
with deep hem  
(31" Inseam)

**Blue  
Ivory**

**\$118**



**Tatum  
43RG242S**

Washed silk charmeuse  
(25% silk/75% viscose)  
Elastic with ruffle at neck  
can be worn on or  
off the shoulder  
Balloon sleeve  
with elastic & ruffle  
Hip length  
with curved hem

**Beige  
Indigo**

**\$78**

**Raegan  
43RG540S**

Washed silk charmeuse  
(25% silk/75% viscose)  
Elastic at waist  
High waist  
(12" front rise  
including waistband)  
Voluminous flared leg  
Pockets at hips  
Full length  
with deep hem  
(31" Inseam)

**Beige  
Indigo**

**\$98**



**Tatum  
43RG242S**

Washed silk charmeuse  
(25% silk/75% viscose)  
Elastic with ruffle at neck  
can be worn on or  
off the shoulder  
Balloon sleeve  
with elastic & ruffle  
Hip length  
with curved hem

**Beige  
Indigo**

**\$78**

**Raegan  
43RG540S**

Washed silk charmeuse  
(25% silk/75% viscose)  
Elastic at waist  
High waist  
(12" front rise  
including waistband)  
Voluminous flared leg  
Pockets at hips  
Full length  
with deep hem  
(31" Inseam)

**Beige  
Indigo**

**\$98**



**Kaylani**  
**43RG640A**

Matte jersey  
(96% polyester/  
4% spandex)  
Slim fit through rib cage  
Easy swing fit body  
Pockets at hips  
3/4 length sleeve with tier  
Above the knee length  
(35.5" HPS)

**Blue**  
**Ivory**

**\$98**



**Kaylani**  
**43RG640A**

Matte jersey  
(96% polyester/  
4% spandex)  
Slim fit through rib cage  
Easy swing fit body  
Pockets at hips  
3/4 length sleeve with tier  
Above the knee length  
(35.5" HPS)

**Blue**  
**Ivory**

**\$98**



**Maggie**  
**43RG642A**  
**(Short Length)**

Washed linen  
(100% linen)  
Body is lined  
(100% viscose challis)  
Embroidered eyelet trim  
Buttons at front  
are functional only  
at the lower skirt.  
Zip closure at back  
Slim fit through body  
Flutter bell sleeve,  
elbow length  
Self covered belt  
Above the knee length  
(35.5" HPS)

**Blue**  
**Ivory**

**\$158**





**Maggie  
43RG642A  
(Short Length)**

Washed linen  
(100% linen)  
Body is lined  
(100% viscose challis)  
Embroidered eyelet trim  
Buttons at front  
are functional only  
at the lower skirt.  
Zip closure at back  
Slim fit through body  
Flutter bell sleeve,  
elbow length  
Self covered belt  
Above the knee length  
(35.5" HPS)

**Blue  
Ivory**

**\$158**

**Maggie  
43RG642M  
(Maxi Length)**

Washed linen  
(100% linen)  
Body is lined  
(100% viscose challis)  
Embroidered eyelet trim  
Buttons at front  
are functional only  
at the lower skirt.  
Zip closure at back  
Slim fit through body  
Flutter bell sleeve,  
elbow length  
Self covered belt  
Maxi length  
(57"HPS)

**Blue  
Ivory**

**\$218**



**Maggie  
43RG642M  
(Maxi Length)**

Washed linen  
(100% linen)  
Body is lined  
(100% viscose challis)  
Embroidered eyelet trim  
Buttons at front  
are functional only  
at the lower skirt.  
Zip closure at back  
Slim fit through body  
Flutter bell sleeve,  
elbow length  
Self covered belt  
Maxi length  
(57"HPS)

**Blue  
Ivory**

**\$218**





**Haven  
43RG644A  
(Short Length)**  
-----

Embroidered linen  
(100% linen)  
Body is lined  
(100% viscose challis)  
Buttons at front  
are functional only  
at the lower skirt.  
Zip closure at back  
Slim fit through body  
Flutter bell sleeve,  
elbow length  
Self covered belt  
Above the knee length  
(35.5" HPS)

**Coral  
White**

**\$168**



**Haven  
43RG644A  
(Short Length)**  
-----

Embroidered linen  
(100% linen)  
Body is lined  
(100% viscose challis)  
Buttons at front  
are functional only  
at the lower skirt.  
Zip closure at back  
Slim fit through body  
Flutter bell sleeve,  
elbow length  
Self covered belt  
Above the knee length  
(35.5" HPS)

**Coral  
White**

**\$168**



**Haven  
43RG644M  
(Maxi Length)**  
-----

Embroidered linen  
(100% linen)  
Body is lined  
(100% viscose challis)  
Buttons at front  
are functional only  
at the lower skirt.  
Zip closure at back  
Slim fit through body  
Flutter bell sleeve,  
elbow length  
Self covered belt  
Maxi length  
(57"HPS)

**Coral  
White**

**\$228**



**Haven  
43RG644M  
(Maxi Length)**  
-----

Embroidered linen  
(100% linen)  
Body is lined  
(100% viscose challis)  
Buttons at front  
are functional only  
at the lower skirt.  
Zip closure at back  
Slim fit through body  
Flutter bell sleeve,  
elbow length  
Self covered belt  
Maxi length  
(57"HPS)

**Coral  
White**

**\$228**





# Limited Edition Denim



**Blake  
ODEN510A**

-----  
Made in the USA  
Cotton stretch denim  
High waisted fit  
(12 3/8" rise including  
waistband)  
Wide leg with flare  
Stitched pin tuck  
Side pockets at front  
Patch pockets at back  
Shipped with 33" inseam  
Deep hem to adjust length

**Black**  
**Light blue wash**  
**Dark blue wash**  
**White**

**\$118**



**Blake  
ODEN510A**

-----  
Made in the USA  
Cotton stretch denim  
High waisted fit  
(12 3/8" rise including  
waistband)  
Wide leg with flare  
Stitched pin tuck  
Side pockets at front  
Patch pockets at back  
Shipped with 33" inseam  
Deep hem to adjust length

**Black**  
**Light blue wash**  
**Dark blue wash**  
**White**

**\$118**





**Blake**  
**ODEN510A**

-----  
Made in the USA  
Cotton stretch denim  
High waisted fit  
(12 3/8" rise including  
waistband)  
Wide leg with flare  
Stitched pin tuck  
Side pockets at front  
Patch pockets at back  
Shipped with 33" inseam  
Deep hem to adjust length

**Black**  
**Light blue wash**  
**Dark blue wash**  
**White**

**\$118**





**Blake**  
**ODEN510A**

-----  
Made in the USA  
Cotton stretch denim  
High waisted fit  
(12 3/8" rise including  
waistband)  
Wide leg with flare  
Stitched pin tuck  
Side pockets at front  
Patch pockets at back  
Shipped with 33" inseam  
Deep hem to adjust length

**Black**  
**Light blue wash**  
**Dark blue wash**  
**White**

**\$118**



A woman with a large afro hairstyle, wearing a vibrant pink and orange floral dress, is captured in a joyful moment as she runs across a lush green lawn. The garden is filled with various plants, including several large, rounded, topiary-style bushes and numerous flowering bushes with red and pink blooms. In the background, a white gazebo with blue accents stands on a raised platform, overlooking a body of blue water and palm trees under a clear sky. The overall scene is bright and sunny, conveying a sense of celebration and outdoor enjoyment.

# Garden Party

**Kali**  
**43TY250A**

Stretch jersey  
(95% viscose/  
5% spandex)  
Georgette sleeves  
(100% viscose)  
Layered ruffle sleeves  
Slim fit body,  
hip length

**Black**  
**Pink**

**\$58**



**Kali**  
**43TY250A**

Stretch jersey  
(95% viscose/  
5% spandex)  
Georgette sleeves  
(100% viscose)  
Layered ruffle sleeves  
Slim fit body,  
hip length

**Black**  
**Pink**

**\$58**



**Tessa**  
**43TY252A**

Washed Voile  
(30% silk/70% cotton)  
Jersey cami lining  
(95% viscose/  
5% spandex)  
Ruffle at neck,  
deep keyhole  
with buttons  
Tiered 3/4 sleeve  
with eyelet detail  
Hip length

**Black**  
**Pink**

**\$108**



**Tessa**  
**43TY252A**

Washed Voile  
(30% silk/70% cotton)  
Jersey cami lining  
(95% viscose/  
5% spandex)  
Ruffle at neck,  
deep keyhole with buttons  
Tiered 3/4 sleeve  
with eyelet detail  
Hip length

**Black**  
**Pink**

**\$108**



**Daphne**  
**43TY650A**

Washed georgette  
(100% viscose)  
Jersey lining  
(95% viscose/  
5% spandex)  
Ruffle bands at armhole  
Enamel buttons  
at front keyhole  
Belt at waist  
Pockets at hips  
Swingy fit  
with ruffle hem  
Above the knee length  
(35.5" HPS)

**Black**  
**Pink**

**\$118**



**Daphne**  
**43TY650A**

Washed georgette  
(100% viscose)  
Jersey lining  
(95% viscose/  
5% spandex)  
Ruffle bands at armhole  
Enamel buttons  
at front keyhole  
Belt at waist  
Pockets at hips  
Swingy fit  
with ruffle hem  
Above the knee length  
(35.5" HPS)

**Black**  
**Pink**

**\$118**





**Hayden  
43TY652A  
(Short Length)**  
-----

Lightweight washed linen  
(100% linen)  
Body is lined  
(100% viscose challis)  
Eyelet trim throughout body  
Buttons at front  
are functional only  
at the lower skirt.  
Zip closure at back  
Slim fit through body  
Puff sleeve with elastic cuff  
Self covered belt  
Above the knee length  
(35.5" HPS)

**Black  
Pink**

**\$138**



**Hayden  
43TY652A  
(Short Length)**  
-----

Lightweight washed linen  
(100% linen)  
Body is lined  
(100% viscose challis)  
Eyelet trim throughout body  
Buttons at front  
are functional only  
at the lower skirt.  
Zip closure at back  
Slim fit through body  
Puff sleeve with elastic cuff  
Self covered belt  
Above the knee length  
(35.5" HPS)

**Black  
Pink**

**\$138**



**Hayden  
43TY652M  
(Maxi Length)**  
-----

Lightweight washed linen  
(100% linen)  
Body is lined  
(100% viscose challis)  
Eyelet trim throughout body  
Buttons at front  
are functional only  
at the lower skirt.  
Zip closure at back  
Slim fit through body  
Puff sleeve with elastic cuff  
Self covered belt  
Maxi length  
(57"HPS)

**Black  
Pink**

**\$168**

**Hayden**  
**43TY652M**  
**(Maxi Length)**

Lightweight washed linen  
(100% linen)  
Body is lined  
(100% viscose challis)  
Eyelet trim throughout body  
Buttons at front  
are functional only  
at the lower skirt.  
Zip closure at back  
Slim fit through body  
Puff sleeve with elastic cuff  
Self covered belt  
Maxi length  
(57" HPS)

**Black**  
**Pink**

**\$168**



**Joanna**  
**43TY654A**

Chiffon  
(100% polyester)  
Smocking & ruffle  
at neck  
Flutter sleeve  
with ruffle  
Tiered asymmetrical  
tulip skirt with  
voluminous flounces  
Shorter at front,  
maxi length at back  
(58" HPS at back)

**Black**  
**Pink**

**\$128**



**Joanna**  
**43TY654A**

Chiffon  
(100% polyester)  
Smocking & ruffle  
at neck  
Flutter sleeve  
with ruffle  
Tiered asymmetrical  
tulip skirt with  
voluminous flounces  
Shorter at front,  
maxi length at back  
(58" HPS at back)

**Black**  
**Pink**

**\$128**





Let Loose





**Jocelyn  
43WL260A**

Silk georgette  
(100% silk)  
Jersey cami  
(95% viscose/  
5% spandex)  
Elastic at front  
yoke with tie  
Buttons at  
front placket  
Long sleeve  
with smocked  
cuff

**Beige  
Blue**

**\$128**



**Jocelyn  
43WL260A**

Silk georgette  
(100% silk)  
Jersey cami  
(95% viscose/  
5% spandex)  
Elastic at front  
yoke with tie  
Buttons at  
front placket  
Long sleeve  
with smocked  
cuff

**Beige  
Blue**

**\$128**



**Juliet  
43WL560A**

Twill  
(55% viscose/  
45% rayon)  
Elastic at waist  
with tie  
Mid-rise  
(9.5" rise including  
waistband)  
Pockets at hips  
Easy leg  
with tie at ankle  
Ankle length  
(27.5" Inseam)

**Beige  
Blue**

**\$88**

**Evie  
43WL262A**

Twill  
(55% viscose/  
45% rayon)  
Buttons at front  
partial placket  
Dropped sleeve  
with shirring at front  
& back under yoke  
Easy voluminous body  
High hip length

**Beige  
Blue**

**\$68**



**Juliet  
43WL560A**

Twill  
(55% viscose/  
45% rayon)  
Elastic at waist  
with tie  
Mid-rise  
(9.5" rise including  
waistband)  
Pockets at hips  
Easy leg  
with tie at ankle  
Ankle length  
(27.5" Inseam)

**Beige  
Blue**

**\$88**



**Evie  
43WL262A**

-----  
Twill  
(55% viscose/  
45% rayon)  
Buttons at front  
partial placket  
Dropped sleeve  
with shirring at front  
& back under yoke  
Easy voluminous body  
High hip length

**Beige  
Blue**

**\$68**

**Cataleya  
43WL660A**

-----  
Matte jersey  
(96% polyester/  
4% spandex)  
Mesh lining  
(95% nylon/  
5% spandex)  
Keyhole at back neck  
with button  
Slim easy fit  
Above the knee length  
(35.5" HPS)

**Beige  
Blue**

**\$88**



**Cataleya  
43WL660A**

-----  
Matte jersey  
(96% polyester/  
4% spandex)  
Mesh lining  
(95% nylon/  
5% spandex)  
Keyhole at back neck  
with button  
Slim easy fit  
Above the knee length  
(35.5" HPS)

**Beige  
Blue**

**\$88**





**Leia  
43WL662A**

-----  
Washed Voile  
(100% Cotton)  
Smocked detail  
at front & waist  
Bell sleeve with trim  
at opening  
Tiered voluminous skirt  
Pockets at hips  
Ankle length  
(51" HPS)

**Beige  
Blue**

**\$158**



**Leia  
43WL662A**

-----  
Washed Voile  
(100% Cotton)  
Smocked detail  
at front & waist  
Bell sleeve with trim  
at opening  
Tiered voluminous skirt  
Pockets at hips  
Ankle length  
(51" HPS)

**Beige  
Blue**

**\$158**





**Paige  
43WL664A**

Washed challis  
(100% viscose)  
Buttons at front placket  
Flutter sleeve  
Pintuck pleats  
at front & back  
Pockets at front hips  
Above the knee length  
(35.5" HPS)

**Beige  
Blue**

**\$108**



**Paige  
43WL664A**

Washed challis  
(100% viscose)  
Buttons at front placket  
Flutter sleeve  
Pintuck pleats  
at front & back  
Pockets at front hips  
Above the knee length  
(35.5" HPS)

**Beige  
Blue**

**\$108**



This book is a presentation of a selection of Hale Bob product and is correct at time of publication.

To view the entire collection of products including updates and additions. You can view product line sheets at [halebob.com](http://halebob.com) by logging into the "Merchant" section of our website.

Prices and products posted in this book are current at time of publication but are subject to change.

**Sales Director**

East Coast  
South East  
Puerto Rico  
Canada  
Majors

**Cathy Cooley**

310-963-2463  
[cathy@halebob.com](mailto:cathy@halebob.com)

**Sales Executive**

Mexico  
Central America  
South America

**Isabela Peralta**

323-394-1739  
[isabela@halebob.com](mailto:isabela@halebob.com)

**Sales Executive**

Midwest

**Tracy Holden**

214-454-1176  
[tracy@halebob.com](mailto:tracy@halebob.com)

**For Marketing & Press Inquiries:**

Marianna Gunther  
[marianna@halebob.com](mailto:marianna@halebob.com)

# HALE BOB

LOS ANGELES

