

HALE BOB

LOS ANGELES
Season 2



Free Form



Leila
42EE210A

Crepe de chine
(100% silk)
Voluminous sleeve
with elastic & ruffle
Hip length

Green
Ivory



Leila
42EE210A

Crepe de chine
(100% silk)
Voluminous sleeve
with elastic & ruffle
Hip length

Green
Ivory



Marley
42EE212A

Washed linen
(100% linen)
Buttons at front body
Sleeve with
voluminous lower part
Smocked cuff
Hip length
with curved hem

Green
Ivory





**Marley
42EE212A**

Washed linen
(100% linen)
Buttons at front body
Sleeve with
voluminous lower part
Smocked cuff
Hip length
with curved hem

**Green
Ivory**



**London
42EE214A**

Washed charmeuse
(54%rayon/46%viscose)
Keyhole at front
with neck tie
Hip length
with curved hem

**Green
Ivory**



**London
42EE214A**

Washed charmeuse
(54%rayon/46%viscose)
Keyhole at front
with neck tie
Hip length
with curved hem

**Green
Ivory**



**Amira
42EE610A**

Washed charmeuse
(54%rayon/46%viscose)
Slim easy fit through body
Bell sleeve 7/8 length
Above the knee hem
(35.5" HPS)

**Green
Ivory**



**Amira
42EE610A**

Washed charmeuse
(54%rayon/46%viscose)
Slim easy fit through body
Bell sleeve 7/8 length
Above the knee hem
(35.5" HPS)

**Green
Ivory**



**Kimberly
42EE612A**

Matte jersey
(96% polyester/
4% spandex)
Mesh lining
(95% nylon/8% spandex)
Pockets at hips
Dropped shoulder
Above the knee length
(35.5" HPS)
Deep hem added
to adjust length

**42EE612B
(BEADED)**

Hand beading
on neckline

**Green
Ivory**



**Kimberly
42EE612A**

Matte jersey
(96% polyester/
4% spandex)
Mesh lining
(95% nylon/8% spandex)
Pockets at hips
Dropped shoulder
Above the knee length
(35.5" HPS)
Deep hem added
to adjust length

**42EE612B
(BEADED)**

Hand beading
on neckline

**Green
Ivory**



Elsie
42EE614A

Washed linen
(100% linen)
Smocking detail
at neck & waist
Bell sleeve
with crochet trim
A-line skirt
with pockets at hips
Maxi length
(58" HPS)

Green
Ivory



Elsie
42EE614A

Washed linen
(100% linen)
Smocking detail
at neck & waist
Bell sleeve
with crochet trim
A-line skirt
with pockets at hips
Maxi length
(58" HPS)

Green
Ivory





Wild
Idea

Ariel
42LD220A

Washed Voile
(30% silk/70% cotton)
Jersey cami lining
(95% viscose/
5% spandex)
Ruffle & tie
at neckline
Deep keyhole
with buttons
Long sleeve
with elastic & ruffle
at wrist

Blue
Ivory



Ariel
42LD220A

Washed Voile
(30% silk/70% cotton)
Jersey cami lining
(95% viscose/
5% spandex)
Ruffle & tie
at neckline
Deep keyhole
with buttons
Long sleeve
with elastic & ruffle
at wrist

Blue
Ivory



Diana
42LD222A

Washed georgette
(100% rayon)
Body is lined
(100% viscose challis)
Smocking at front yoke
Flutter bell sleeve
with ruffle
Hip length
with curved hem

Blue
Ivory



Diana
42LD222A

Washed georgette
(100% rayon)
Body is lined
(100% viscose challis)
Smocking at front yoke
Flutter bell sleeve
with ruffle
Hip length
with curved hem

Blue
Ivory



Alana
42LD620A

Washed voile
(100% cotton)
Fully lined
(100% cotton)
Shirred borders
at armhole
Buttons at front neck
Flat waist
with smocked insert
at back
Invisible zip at back
Tiered voluminous skirt
Ankle length
(54" HPS)

Blue
Ivory



Alana
42LD620A

Washed voile
(100% cotton)
Fully lined
(100% cotton)
Shirred borders
at armhole
Buttons at front neck
Flat waist
with smocked insert
at back
Invisible zip at back
Tiered voluminous skirt
Ankle length
(54" HPS)

Blue
Ivory



Hope
42LD622A

Washed georgette
(100% rayon)
Challis lining
(100% Viscose)
Slim bodice with back zip
Tiered skirt with pocket
Pleated drape sleeve
Above the knee length
(35.5" HPS)

Blue
Ivory



Hope
42LD622A

Washed georgette
(100% rayon)
Challis lining
(100% Viscose)
Slim bodice with back zip
Tiered skirt with pocket
Pleated drape sleeve
Above the knee length
(35.5" HPS)

Blue
Ivory



Annie
42LD624A

Matte jersey
(90% polyester/
10%spandex)
Pleat at front under placket
Pockets at hips
Balloon sleeve
with smocked cuff
Above the knee length
(35.5" HPS)
Deep hem added
to adjust length

42LD624B

(BEADED)

Hand beading
on neckline

Blue
Ivory



Annie
42LD624A

Matte jersey
(90% polyester/
10%spandex)
Pleat at front under placket
Pockets at hips
Balloon sleeve
with smocked cuff
Above the knee length
(35.5" HPS)
Deep hem added
to adjust length

42LD624B

(BEADED)

Hand beading
on neckline

Blue
Ivory



A woman with long brown hair is sitting on a wooden chair in a rustic, bamboo-walled setting. She is wearing a colorful, patterned blouse with a yellow and blue design and blue jeans. She is leaning back on her hand, looking towards the camera. The background features a bamboo wall and a thatched roof.

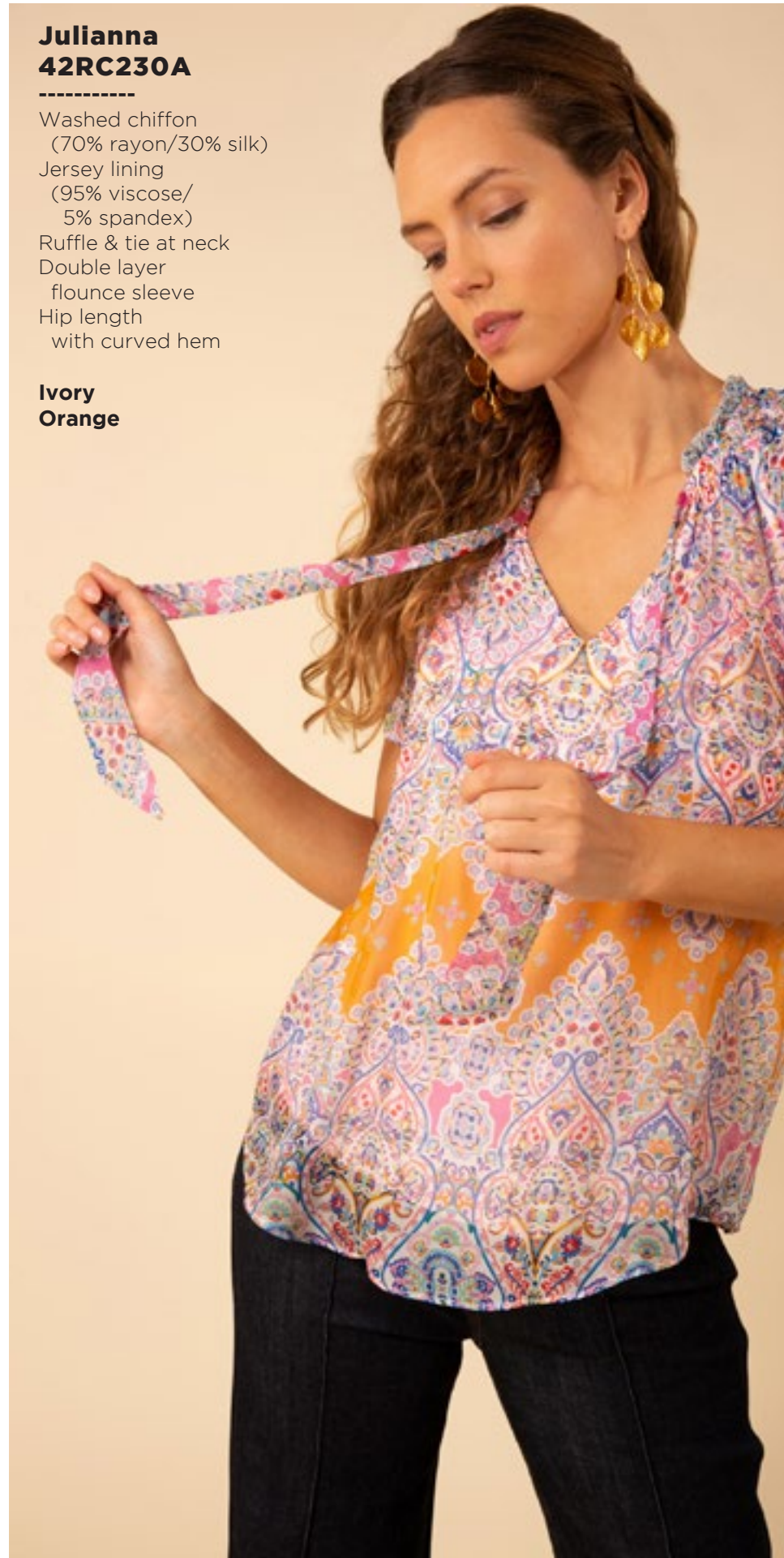
Treasure Chest



**Julianna
42RC230A**

Washed chiffon
(70% rayon/30% silk)
Jersey lining
(95% viscose/
5% spandex)
Ruffle & tie at neck
Double layer
flounce sleeve
Hip length
with curved hem

**Ivory
Orange**



**Julianna
42RC230A**

Washed chiffon
(70% rayon/30% silk)
Jersey lining
(95% viscose/
5% spandex)
Ruffle & tie at neck
Double layer
flounce sleeve
Hip length
with curved hem

**Ivory
Orange**



**Lennon
42RC232A**

Matte jersey
(96% polyester/
4% spandex)
Pleat at CF under placket
3/4 sleeve with cuff
Hip length

**Ivory
Orange**

Lennon
42RC232A

Matte jersey
(96% polyester/
4% spandex)
Pleat at CF under placket
3/4 sleeve with cuff
Hip length

Ivory
Orange



Evangeline
42RC234A

Crepe de chine
(100% silk)
Voluminous sleeve
with cuff
Buttons at front yoke
Hip length

Ivory
Orange

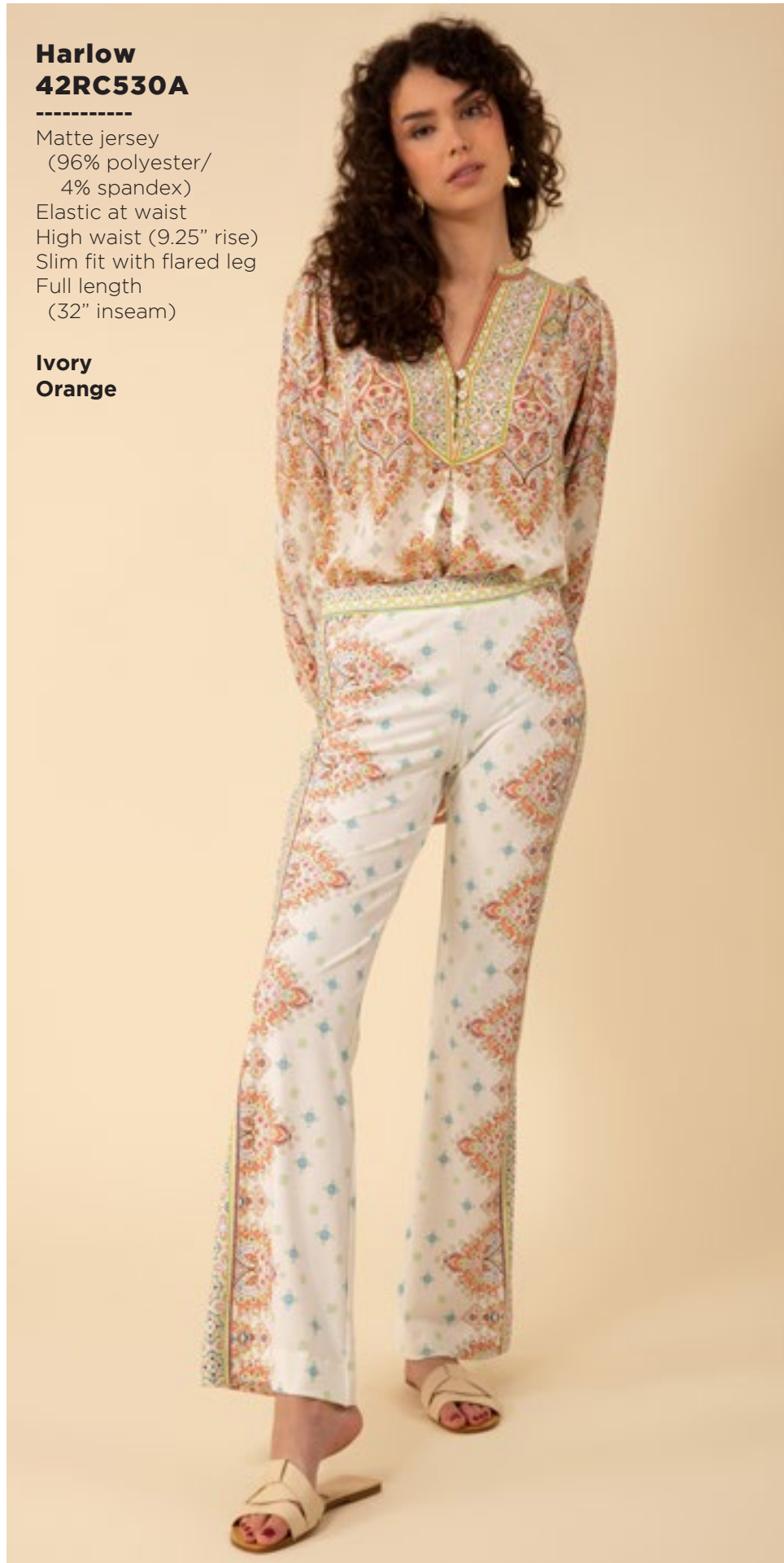




**Evangeline
42RC234A**

Crepe de chine
(100% silk)
Voluminous sleeve
with cuff
Buttons at front yoke
Hip length

**Ivory
Orange**



**Harlow
42RC530A**

Matte jersey
(96% polyester/
4% spandex)
Elastic at waist
High waist (9.25" rise)
Slim fit with flared leg
Full length
(32" inseam)

**Ivory
Orange**



**Harlow
42RC530A**

Matte jersey
(96% polyester/
4% spandex)
Elastic at waist
High waist (9.25" rise)
Slim fit with flared leg
Full length
(32" inseam)

**Ivory
Orange**



**Kamila
42RC630A**

Washed Charmeuse
(25% silk/75% viscose)
Buttons at front
Long sleeve
with wide cuff
Slim fit silhouette
Above the knee
(35.5" HPS)

**Ivory
Orange**



**Kamila
42RC630A**

Washed Charmeuse
(25% silk/75% viscose)
Buttons at front
Long sleeve
with wide cuff
Slim fit silhouette
Above the knee
(35.5" HPS)

**Ivory
Orange**



**Rowan
42RC632A**

Matte jersey
(96% polyester/
4% spandex)
Mesh lining
(95% nylon/8% spandex)
Keyhole at back neck
with button
Slim easy fit
Above the knee length
(35.5" HPS)

**Ivory
Orange**

Rowan
42RC632A

Matte jersey
(96% polyester/
4% spandex)
Mesh lining
(95% nylon/8% spandex)
Keyhole at back neck
with button
Slim easy fit
Above the knee length
(35.5" HPS)

Ivory
Orange



Elise
42RC634A
(Midi Length)

Matte jersey
(96% polyester/
4% spandex)
Mesh lining
(95% nylon/8% spandex)
Slim fit through bodice
A-line skirt
with pleat at waist
Dropped shoulder
Below the knee length
(41" HPS)

Ivory
Orange



**Elise
42RC634A
(Midi Length)**

Matte jersey
(96% polyester/
4% spandex)
Mesh lining
(95% nylon/8% spandex)
Slim fit through bodice
A-line skirt
with pleat at waist
Dropped shoulder
Below the knee length
(41" HPS)

**Ivory
Orange**



**Elise
42RC634L
(Short Length)**

Matte jersey
(96% polyester/
4% spandex)
Mesh lining
(95% nylon/8% spandex)
Slim fit through bodice
A-line skirt
with pleat at waist
Dropped shoulder
Above the knee length
(35.5" HPS)

**Ivory
Orange**



**Elise
42RC634L
(Short Length)**

Matte jersey
(96% polyester/
4% spandex)
Mesh lining
(95% nylon/8% spandex)
Slim fit through bodice
A-line skirt
with pleat at waist
Dropped shoulder
Above the knee length
(35.5" HPS)

**Ivory
Orange**



Vera
42RC636A

Washed chiffon
(70% rayon/30% silk)
Challis lining
(100% Viscose)
Halter neck
with tie at side
Keyhole at front neck
Smocking at waist
Full a-line skirt
with pockets
Maxi length
(58" HPS)

Ivory
Orange



Vera
42RC636A

Washed chiffon
(70% rayon/30% silk)
Challis lining
(100% Viscose)
Halter neck
with tie at side
Keyhole at front neck
Smocking at waist
Full a-line skirt
with pockets
Maxi length
(58" HPS)

Ivory
Orange





Limited
Edition
Denim

**Blake
ODEN510A**

Made in the USA
Cotton stretch denim
High waisted fit
(12 3/8" rise including
waistband)
Wide leg with flare
Stitched pin tuck
Side pockets at front
Patch pockets at back
Shipped with 33" inseam
Deep hem to adjust length

Black
Light blue wash
Dark blue wash
White



**Blake
ODEN510A**

Made in the USA
Cotton stretch denim
High waisted fit
(12 3/8" rise including
waistband)
Wide leg with flare
Stitched pin tuck
Side pockets at front
Patch pockets at back
Shipped with 33" inseam
Deep hem to adjust length

Black
Light blue wash
Dark blue wash
White





Blake
ODEN510A

Made in the USA
Cotton stretch denim
High waisted fit
(12 3/8" rise including
waistband)
Wide leg with flare
Stitched pin tuck
Side pockets at front
Patch pockets at back
Shipped with 33" inseam
Deep hem to adjust length

Black
Light blue wash
Dark blue wash
White



Blake
ODEN510A

Made in the USA
Cotton stretch denim
High waisted fit
(12 3/8" rise including
waistband)
Wide leg with flare
Stitched pin tuck
Side pockets at front
Patch pockets at back
Shipped with 33" inseam
Deep hem to adjust length

Black
Light blue wash
Dark blue wash
White



A woman with long, wavy brown hair and blue eyes is the central figure. She is wearing a white dress with a blue floral and vine pattern. She is sitting on a large, light-colored rock. In the background, there is a small pond with water, surrounded by lush green tropical plants, including palm trees and other foliage. The scene is brightly lit, suggesting a sunny day. The text 'Climbing Vines' is overlaid on the right side of the image in a white, serif font.

Climbing Vines



**Kaia
42SV240A**

Washed embroidered linen
(100% linen)
3/4 sleeve
with flutter bell
Buttons at front body
Hip length

**Chartreuse
Ivory**



**Kaia
42SV240A**

Washed embroidered linen
(100% linen)
3/4 sleeve
with flutter bell
Buttons at front body
Hip length

**Chartreuse
Ivory**



**Sutton
42SV540A**

Washed embroidered linen
(100% linen)
Fully lined
(100% viscose challis)
Functional waist
with hooks & zipper
Pockets at hips
Flared leg
Full length (32" Inseam)
with deep hem

Ivory



**Teagan
42SV640A**

Washed embroidered linen
(100% linen)
Body is lined
(100% viscose challis)
Slim fit through rib cage
Tiered voluminous skirt
Short sleeve
Above the knee length
(35.5" HPS)

**Blue
Chartreuse
Ivory**



**Teagan
42SV640A**

Washed embroidered linen
(100% linen)
Body is lined
(100% viscose challis)
Slim fit through rib cage
Tiered voluminous skirt
Short sleeve
Above the knee length
(35.5" HPS)

**Blue
Chartreuse
Ivory**



**Teagan
42SV640A**

Washed embroidered linen
(100% linen)
Body is lined
(100% viscose challis)
Slim fit through rib cage
Tiered voluminous skirt
Short sleeve
Above the knee length
(35.5" HPS)

**Blue
Chartreuse
Ivory**



Myla
42SV642A

Washed embroidered linen
(100% linen)
Body is lined
(100% viscose challis)
Slim fit through body
Voluminous tier at hem
Zipper at back
Belt at waist
Short sleeve
with smocked cuff
Maxi length
(57" HPS)

Blue
Ivory



Myla
42SV642A

Washed embroidered linen
(100% linen)
Body is lined
(100% viscose challis)
Slim fit through body
Voluminous tier at hem
Zipper at back
Belt at waist
Short sleeve
with smocked cuff
Maxi length
(57" HPS)

Blue
Ivory







Clear Skies



**Lilah
42TK250A**

Washed Voile
(30% silk/70% cotton)
Jersey cami lining
(95% viscose/5% spandex)
Ruffle at neck,
deep keyhole with buttons
Long sleeve with elastic
& ruffle at wrist
Hip length

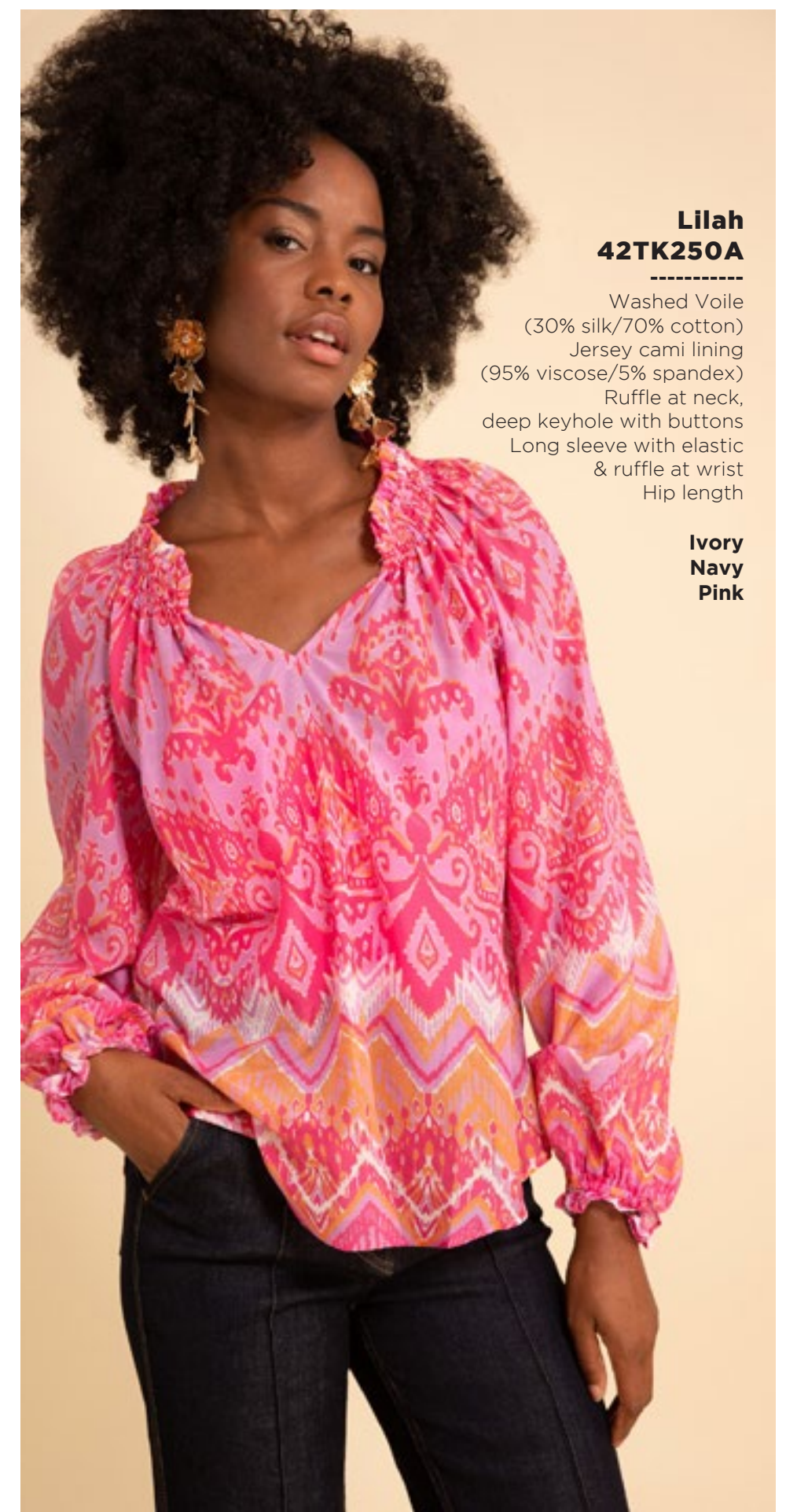
**Ivory
Navy
Pink**



**Lilah
42TK250A**

Washed Voile
(30% silk/70% cotton)
Jersey cami lining
(95% viscose/5% spandex)
Ruffle at neck,
deep keyhole with buttons
Long sleeve with elastic
& ruffle at wrist
Hip length

**Ivory
Navy
Pink**



**Lilah
42TK250A**

Washed Voile
(30% silk/70% cotton)
Jersey cami lining
(95% viscose/5% spandex)
Ruffle at neck,
deep keyhole with buttons
Long sleeve with elastic
& ruffle at wrist
Hip length

**Ivory
Navy
Pink**



**Alyssa
42TK252A**

Jersey
(95% viscose/5% spandex)
Drop shoulder
Tie at front waist
Hip length
Easy, relaxed fit

**Ivory
Navy
Pink**



**Alyssa
42TK252A**

Jersey
(95% viscose/5% spandex)
Drop shoulder
Tie at front waist
Hip length
Easy, relaxed fit

**Ivory
Navy
Pink**



**Alyssa
42TK252A**

Jersey
(95% viscose/5% spandex)
Drop shoulder
Tie at front waist
Hip length
Easy, relaxed fit

**Ivory
Navy
Pink**



**Adelyn
42TK254A**

Washed linen
(100% linen)
Buttons at front body
Long sleeve with tab
to adjust length
Hip length

**Ivory
Navy
Pink**



**Adelyn
42TK254A**

Washed linen
(100% linen)
Buttons at front body
Long sleeve with tab
to adjust length
Hip length

**Ivory
Navy
Pink**



**Adelyn
42TK254A**

Washed linen
(100% linen)
Buttons at front body
Long sleeve with tab
to adjust length
Hip length

**Ivory
Navy
Pink**



**Phoebe
42TK550A**

Washed linen
(100% linen)
Fully lined
(100% viscose challis)
Side zip
Flared leg
Full length with deep hem
(32" Inseam)

**Ivory
Navy
Pink**

Note: the sales sample
runs large



**Phoebe
42TK550A**

Washed linen
(100% linen)
Fully lined
(100% viscose challis)
Side zip
Flared leg
Full length with deep hem
(32" Inseam)

**Ivory
Navy
Pink**

Note: the sales sample
runs large



**Phoebe
42TK550A**

Washed linen
(100% linen)
Fully lined
(100% viscose challis)
Side zip
Flared leg
Full length with deep hem
(32" Inseam)

**Ivory
Navy
Pink**

Note: the sales sample
runs large



Laila
42TK650A

Matte jersey
(96% polyester/
4% spandex)
Slim fit through rib cage
Easy swing fit body
Pockets at hips
3/4 length bell sleeve
Above the knee length
(35.5" HPS)

Ivory
Navy
Pink



Laila
42TK650A

Matte jersey
(96% polyester/
4% spandex)
Slim fit through rib cage
Easy swing fit body
Pockets at hips
3/4 length bell sleeve
Above the knee length
(35.5" HPS)

Ivory
Navy
Pink



Laila
42TK650A

Matte jersey
(96% polyester/
4% spandex)
Slim fit through rib cage
Easy swing fit body
Pockets at hips
3/4 length bell sleeve
Above the knee length
(35.5" HPS)

Ivory
Navy
Pink

**Angela
42TK652A**

Heavyweight jersey
(95% viscose/5% spandex)
Shirring at front & back body
Spaghetti ties can tie
at front or around neck
Dropped shoulder
Slim fit at body
with flounce hem
Maxi length
(57" HPS)

**Ivory
Navy
Pink**



**Angela
42TK652A**

Heavyweight jersey
(95% viscose/5% spandex)
Shirring at front & back body
Spaghetti ties can tie
at front or around neck
Dropped shoulder
Slim fit at body
with flounce hem
Maxi length
(57" HPS)

**Ivory
Navy
Pink**



**Angela
42TK652A**

Heavyweight jersey
(95% viscose/5% spandex)
Shirring at front & back body
Spaghetti ties can tie
at front or around neck
Dropped shoulder
Slim fit at body
with flounce hem
Maxi length
(57" HPS)

**Ivory
Navy
Pink**



Sydney
42TK654A

Lightweight washed linen
(100% linen)
Body is lined
(100% viscose challis)
Buttons at front
are functional only
at the lower skirt.
Zip closure at back
Slim fit through body
Puff sleeve
with elastic cuff
Self covered belt
Maxi length
(57"HPS)

Ivory
Navy
Pink



Sydney
42TK654A

Lightweight washed linen
(100% linen)
Body is lined
(100% viscose challis)
Buttons at front
are functional only
at the lower skirt.
Zip closure at back
Slim fit through body
Puff sleeve
with elastic cuff
Self covered belt
Maxi length
(57"HPS)

Ivory
Navy
Pink



Sydney
42TK654A

Lightweight washed linen
(100% linen)
Body is lined
(100% viscose challis)
Buttons at front
are functional only
at the lower skirt.
Zip closure at back
Slim fit through body
Puff sleeve
with elastic cuff
Self covered belt
Maxi length
(57"HPS)

Ivory
Navy
Pink





Petal Poetry



**Ana
42YP260A**

Washed georgette
(100% rayon)
Body is lined
(95% viscose/
5% spandex jersey)
Pleated sleeve,
short length
Easy fit through body
Hip length

**Blue (Rainbow)
Orange**



**Ana
42YP260A**

Washed georgette
(100% rayon)
Body is lined
(95% viscose/
5% spandex jersey)
Pleated sleeve,
short length
Easy fit through body
Hip length

**Blue (Rainbow)
Orange**

**Octavia
42YP262A**

Washed chiffon
(70% rayon/30% silk)
Body is lined
(95% viscose/
5% spandex jersey)
Voluminous balloon sleeve
with smocked cuff
Smocking at opening
Hip length
with curved hem

**Blue (Rainbow)
Orange**



**Octavia
42YP262A**

Washed chiffon
(70% rayon/30% silk)
Body is lined
(95% viscose/
5% spandex jersey)
Voluminous balloon sleeve
with smocked cuff
Smocking at opening
Hip length
with curved hem

**Blue (Rainbow)
Orange**





**Mariana
42YP660A**

Poplin
(100% Cotton)
Eyelet trim detailing
Buttons at front placket
are not functional.
Zip closure at back
Tie at waist
Above the knee length
(35.5" HPS)

**Blue (Rainbow)
Orange**



**Mariana
42YP660A**

Poplin
(100% Cotton)
Eyelet trim detailing
Buttons at front placket
are not functional.
Zip closure at back
Tie at waist
Above the knee length
(35.5" HPS)

**Blue (Rainbow)
Orange**



**Mariana
42YP660S**

Poplin
(100% Cotton)
Eyelet trim detailing
Buttons at front placket
are not functional.
Zip closure at back
Tie at waist
Above the knee length
(35.5" HPS)

**Blue
Coral**

Mariana
42YP660S

Poplin
(100% Cotton)
Eyelet trim detailing
Buttons at front placket
are not functional.
Zip closure at back
Tie at waist
Above the knee length
(35.5" HPS)

Blue
Coral



Wren
42YP662A

Heavyweight jersey
(95% viscose/5% spandex)
Shirred bodice with tie neck
Smocked back bodice
Voluminous skirt
with gussets
Above the knee length
(35.5" HPS)

Blue



Lainey
42YP664A

Chiffon
(100% polyester)
Smocking & ruffle at neck
Hook & eye at front neck
Elastic smocked waist
Pleated short sleeve
Tiered skirt
with slit at lower tiers
Ankle length at front
with hi/low hem
(49" at front, 52" at back)

Blue
Orange



Lainey
42YP654A

Chiffon
(100% polyester)
Smocking & ruffle at neck
Hook & eye at front neck
Elastic smocked waist
Pleated short sleeve
Tiered skirt
with slit at lower tiers
Ankle length at front
with hi/low hem
(49" at front, 52" at back)

Blue
Orange



This book is a presentation of a selection of Hale Bob product and is correct at time of publication.

To view the entire collection of products including updates and additions. You can view product line sheets at halebob.com by logging into the "Merchant" section of our website.

Prices and products posted in this book are current at time of publication but are subject to change.

Sales Director

East Coast
South East
Puerto Rico
Canada
Majors

Cathy Cooley

310-963-2463
cathy@halebob.com

Sales Executive

Mexico
Central America
South America

Isabela Peralta

323-394-1739
isabela@halebob.com

Sales Executive

Midwest

Tracy Holden

214-454-1176
tracy@halebob.com

For Marketing & Press Inquiries:

Marianna Gunther
marianna@halebob.com

HALE BOB
LOS ANGELES

