

HALE BOB

LOS ANGELES
Season 1





The
Golden
Hour

Bailey
41AH210A

Crepe de chine
(100% viscose)
Buttons at front placket
Shirring at front yoke
Long sleeve
with smocked cuff
Low hip length
with curved hem

Coral
Navy



Bailey
41AH210A

Crepe de chine
(100% viscose) z
Buttons at front placket
Shirring at front yoke
Long sleeve
with smocked cuff
Low hip length
with curved hem

Coral
Navy



Faith
41AH212A

Crepe de chine
(100% viscose)
Shirred detail at shoulder
Keyhole with button
at top neck
Hip length
with curved hem

Coral
Navy



Catalina
41AH410A

Crepe de chine
(100% viscose)
Challis lining
(100% viscose)
Smocked waistband
can be worn on
the waist or hip
Pockets at hips
Tiered voluminous fit
Length from top
waistband to hem:
38" (maxi length)

Coral
Navy

Faith
41AH212A

Crepe de chine
(100% viscose)
Shirred detail at shoulder
Keyhole with button
at top neck
Hip length
with curved hem

Coral
Navy



Catalina
41AH410A

Crepe de chine
(100% viscose)
Challis lining
(100% viscose)
Smocked waistband
can be worn on
the waist or hip
Pockets at hips
Tiered voluminous fit
Length from top
waistband to hem:
38" (maxi length)

Coral
Navy



Emerson
41AH610A

Crepe de chine
(100% viscose)
Challis lining
(100% viscose)
Embroidery at hem
Shirring at front
body under yoke
Pockets at hips
Ruffle detail at hem
Long sleeve
with smocking & ruffle
Above the knee length
(35.5" HPS)

Coral
Navy



Emerson
41AH610A

Crepe de chine
(100% viscose)
Challis lining
(100% viscose)
Embroidery at hem
Shirring at front
body under yoke
Pockets at hips
Ruffle detail at hem
Long sleeve
with smocking & ruffle
Above the knee length
(35.5" HPS)

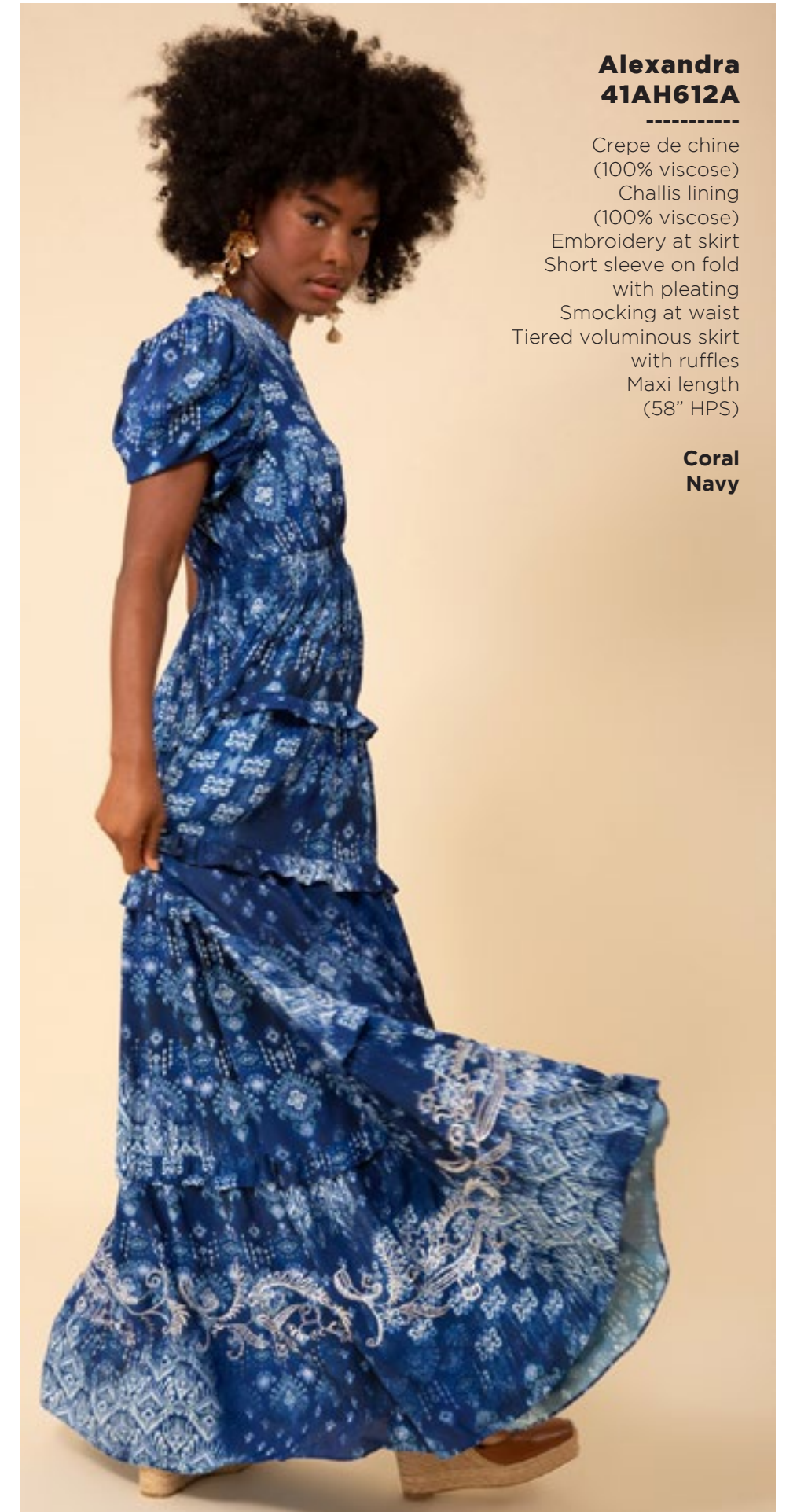
Coral
Navy



**Alexandra
41AH612A**

Crepe de chine
(100% viscose)
Challis lining
(100% viscose)
Embroidery at skirt
Short sleeve on fold
with pleating
Smocking at waist
Tiered voluminous skirt
with ruffles
Maxi length
(58" HPS)

**Coral
Navy**



**Alexandra
41AH612A**

Crepe de chine
(100% viscose)
Challis lining
(100% viscose)
Embroidery at skirt
Short sleeve on fold
with pleating
Smocking at waist
Tiered voluminous skirt
with ruffles
Maxi length
(58" HPS)

**Coral
Navy**

A woman with long brown hair is sitting on a large, light-colored rock in a lush tropical garden. She is wearing a pink and white patterned top and matching wide-leg pants, with gold strappy sandals. The garden is filled with various green plants, including large-leafed tropical foliage and purple flowers. In the foreground, there is a small pond of clear blue water that reflects the woman and the surrounding greenery. The scene is brightly lit, suggesting a sunny day.

Paradise Palms

**Ryleigh
41DL220A**

Washed crepe de chine
(100% silk)
Shell buttons at front
Voluminous sleeve
with cuff
Low hip length
with slits at sides

**Light Blue
Pink**



**Ryleigh
41DL220A**

Washed crepe de chine
(100% silk)
Shell buttons at front
Voluminous sleeve
with cuff
Low hip length
with slits at sides

**Light Blue
Pink**

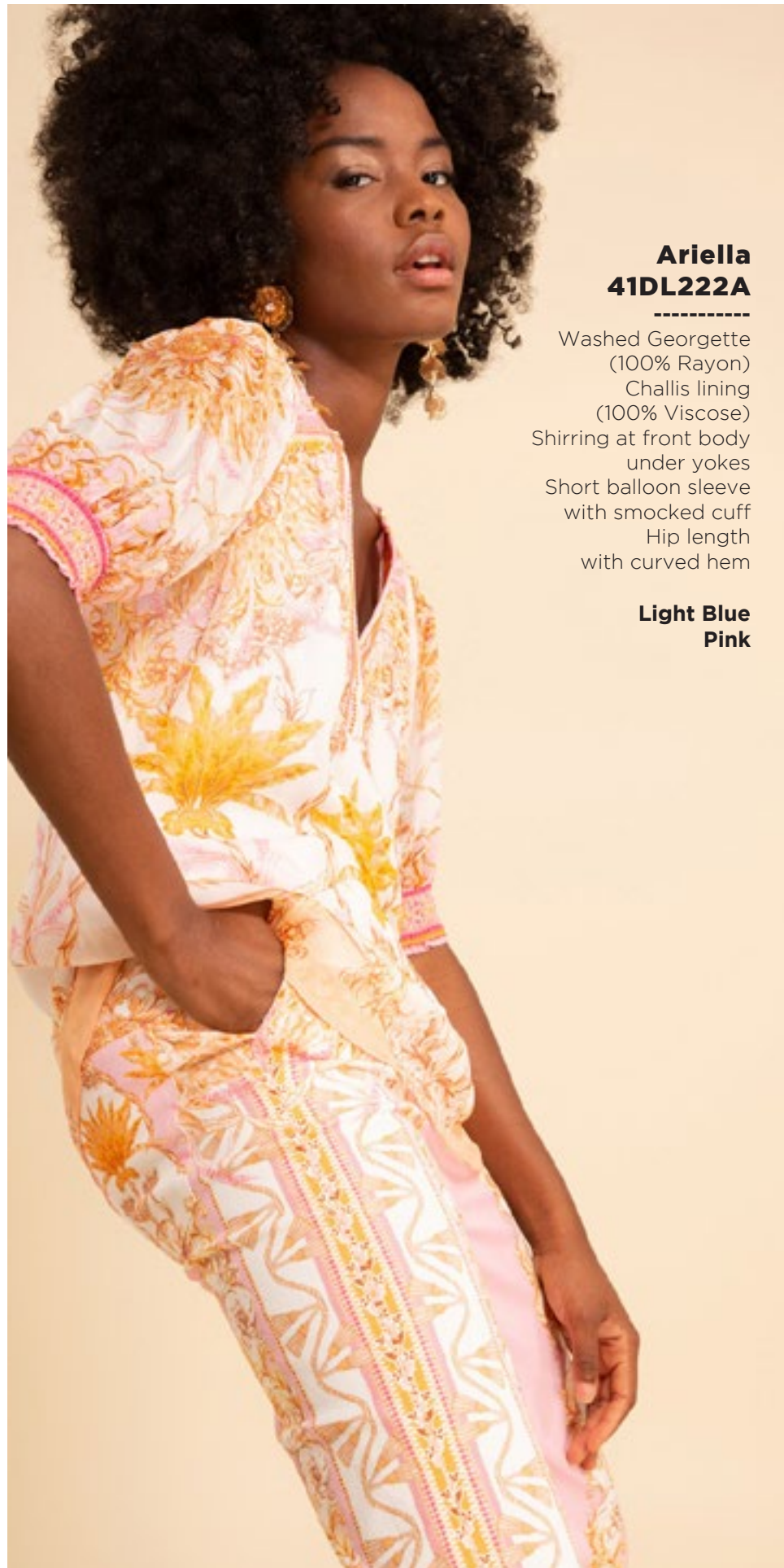


**Ariella
41DL222A**

Washed Georgette
(100% Rayon)
Challis lining
(100% Viscose)
Shirring at front body
under yokes
Short balloon sleeve
with smocked cuff
Hip length
with curved hem

**Light Blue
Pink**





Ariella
41DL222A

Washed Georgette
(100% Rayon)
Challis lining
(100% Viscose)
Shirring at front body
under yokes
Short balloon sleeve
with smocked cuff
Hip length
with curved hem

Light Blue
Pink



Millie
41DL224A

Washed charmeuse
(54%rayon/46%viscose)
Chain necklace
with grosgrain ribbon
Easy fit through body
Hip length
with curved hem

Light Blue
Pink



Millie
41DL224A

Washed charmeuse
(54%rayon/46%viscose)
Chain necklace
with grosgrain ribbon
Easy fit through body
Hip length
with curved hem

Light Blue
Pink



**Khloe
41DL520A**

Stretch sateen
(97%cotton/3%spandex)
High waist (12" rise)
Functional button/fly
Pockets at hips & back
Pintuck at front & back leg
Flared wide leg
Long length with invisible
hem to adjust length
(shipped with 33" inseam)

**Light Blue
Pink**

Note: Sample is too long



**Khloe
41DL520A**

Stretch sateen
(97% cotton/3% spandex)
High waist (12" rise)
Functional button/fly
Pockets at hips & back
Pintuck at front & back leg
Flared wide leg
Long length with invisible
hem to adjust length
(shipped with 33" inseam)

**Light Blue
Pink**

Note: Sample is too long



**Ashley
41DL620A**

Matte jersey
(96% polyester/
4% spandex)
Collar with mid length
placket at front,
with flower buttons
Pockets at hips
Long sleeve
with wide cuff
Self covered belt included
Above the knee length
(35.5" HPS)
Deep hem included
to adjust length

**Light Blue
Pink**



**Ashley
41DL620A**

Matte jersey
(96% polyester/
4% spandex)
Collar with mid length
placket at front,
with flower buttons
Pockets at hips
Long sleeve
with wide cuff
Self covered belt included
Above the knee length
(35.5" HPS)
Deep hem included
to adjust length

**Light Blue
Pink**



**Callie
41DL622A**

Lightweight washed linen
(100% linen)
Challis lining
(100% viscose)
Elastic smocking at waist
Pockets at hips
Bell sleeve
Trim detailing
at sleeve & hem
Above the knee length
(35.5" HPS)

**Light Blue
Pink**



**Callie
41DL622A**

Lightweight washed linen
(100% linen)
Challis lining
(100% viscose)
Elastic smocking at waist
Pockets at hips
Bell sleeve
Trim detailing
at sleeve & hem
Above the knee length
(35.5" HPS)

**Light Blue
Pink**



**Andrea
41DL624A**

Washed charmeuse
(54%rayon/46%viscose)
Dropped flutter sleeve
Elastic at waist
Pockets at hips
Flower buttons at front
skirt are functional
towards the bottom
Slit at center front
Maxi length (58" HPS)

**Light Blue
Pink**

**Andrea
41DL624A**

Washed charmeuse
(54%rayon/46%viscose)
Dropped flutter sleeve
Elastic at waist
Pockets at hips
Flower buttons at front
skirt are functional
towards the bottom
Slit at center front
Maxi length (58" HPS)

**Light Blue
Pink**





Limited
Edition
Denim

Blake
ODEN510A

Made in the USA
Cotton stretch denim
High waisted fit
(12 3/8" rise including
waistband)
Wide leg with flare
Stitched pin tuck
Side pockets at front
Patch pockets at back
Shipped with 33" inseam
Deep hem to adjust length

Black
Light blue wash
Dark blue wash
White



Blake
ODEN510A

Made in the USA
Cotton stretch denim
High waisted fit
(12 3/8" rise including
waistband)
Wide leg with flare
Stitched pin tuck
Side pockets at front
Patch pockets at back
Shipped with 33" inseam
Deep hem to adjust length

Black
Light blue wash
Dark blue wash
White





Blake
ODEN510A

Made in the USA
Cotton stretch denim
High waisted fit
(12 3/8" rise including
waistband)
Wide leg with flare
Stitched pin tuck
Side pockets at front
Patch pockets at back
Shipped with 33" inseam
Deep hem to adjust length

Black
Light blue wash
Dark blue wash
White



Blake
ODEN510A

Made in the USA
Cotton stretch denim
High waisted fit
(12 3/8" rise including
waistband)
Wide leg with flare
Stitched pin tuck
Side pockets at front
Patch pockets at back
Shipped with 33" inseam
Deep hem to adjust length

Black
Light blue wash
Dark blue wash
White





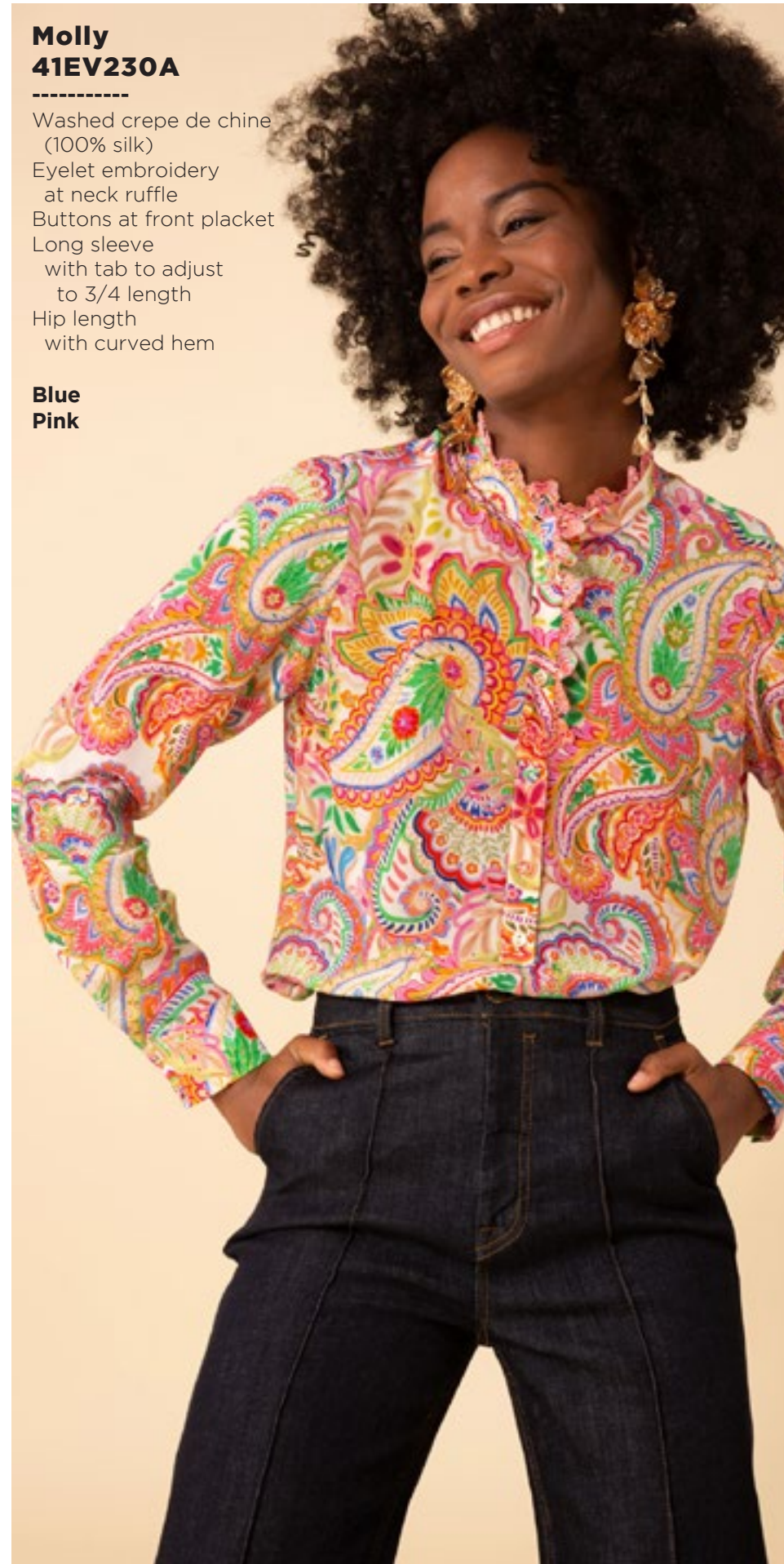
Tidal
Wave



Molly
41EV230A

Washed crepe de chine
(100% silk)
Eyelet embroidery
at neck ruffle
Buttons at
front placket
Long sleeve
with tab to adjust
to 3/4 length
Hip length
with curved hem

Blue
Pink



Molly
41EV230A

Washed crepe de chine
(100% silk)
Eyelet embroidery
at neck ruffle
Buttons at front placket
Long sleeve
with tab to adjust
to 3/4 length
Hip length
with curved hem

Blue
Pink



Ada
41EV232A

Washed Voile
(30% silk/70% cotton)
Ruffleat neckline,
deep keyhole
with buttons
Long full sleeve
with smocked cuff
Sheer crochet insert
at sleeve
Hip length
with curved hem

Blue
Pink

Ada
41EV232A

Washed Voile
(30% silk/70% cotton)
Ruffleat neckline,
deep keyhole
with buttons
Long full sleeve
with smocked cuff
Sheer crochet insert
at sleeve
Hip length
with curved hem

Blue
Pink



Rosalie
41EV630A

Chiffon
(100% polyester)
Challis lining
(100% viscose)
Ruffle detailing
throughout body
Elastic smocked waist
Tiered voluminous skirt
with side slit at leg
Balloon sleeve
with hidden elastic
above elbow
Maxi length (58" HPS)

Blue
Pink



Rosalie
41EV630A

Chiffon
(100% polyester)
Challis lining
(100% viscose)
Ruffle detailing
throughout body
Elastic smocked waist
Tiered voluminous skirt
with side slit at leg
Balloon sleeve
with hidden elastic
above elbow
Maxi length (58" HPS)

Blue
Pink





**Alani
41EV632A**

Linen/tencel blend woven
(45% viscose/19% tencel/
18% linen/18% rayon)
Buttons at front body
Tiered voluminous skirt
Long sleeve with tab to
adjust to 3/4 length
Above the knee length
(35.5" HPS)

**Blue
Pink**



**Alani
41EV632A**

Linen/tencel blend woven
(45% viscose/19% tencel/
18% linen/18% rayon)
Buttons at front body
Tiered voluminous skirt
Long sleeve with tab to
adjust to 3/4 length
Above the knee length
(35.5" HPS)

**Blue
Pink**



**Brianna
41EV634A
(Midi length)**

Matte jersey
(96% polyester/
4% spandex)
Mesh lining
(95% nylon/8% spandex)
Slim fit through bodice
A-line skirt
with pleat at waist
3/4 balloon sleeve
with cuff
Below the knee length
(41" HPS)

**Blue
Pink**



**Brianna
41EV634A
(Midi length)**

Matte jersey
(96% polyester/
4% spandex)
Mesh lining
(95% nylon/8% spandex)
Slim fit through bodice
A-line skirt
with pleat at waist
3/4 balloon sleeve
with cuff
Below the knee length
(41" HPS)

**Blue
Pink**



**Brianna
41EV634L
(Short length)**

Matte jersey
(96% polyester/
4% spandex)
Mesh lining
(95% nylon/8% spandex)
Slim fit through bodice
A-line skirt
with pleat at waist
3/4 balloon sleeve
with cuff
Above the knee length
(35.5" HPS)

**Blue
Pink**



**Brianna
41EV634L
(Short length)**

Matte jersey
(96% polyester/
4% spandex)
Mesh lining
(95% nylon/8% spandex)
Slim fit through bodice
A-line skirt
with pleat at waist
3/4 balloon sleeve
with cuff
Above the knee length
(35.5" HPS)

**Blue
Pink**



Lightheart



Cora
41GT240A

Washed cotton/linen
(70% cotton/30% linen)
Cutwork embroidery &
trim throughout
Voluminous sleeve
with cuff
Low hip length
with slits at sides

Fuchsia



Amy
41GT540A

Washed cotton/linen
(70% cotton/
30% linen)
Lining
(100% cotton)
Cutwork embroidery
& trim throughout
Functional front zip
& button at waist
Pockets at hips
Flared leg
Full length (inseam:)

Fuchsia





Amy
41GT640A

Washed cotton/linen
(70% cotton/30% linen)
Body is lined
(100% cotton)
Cutwork embroidery
& trim throughout
Easy fit, slim through
rib cage
Tiered, swingy fit
at skirt
3/4 sleeve with cuff
Above the knee
(35.5" HPS)

Blue
Ivory
Fuchsia



Amy
41GT640A

Washed cotton/linen
(70% cotton/30% linen)
Body is lined
(100% cotton)
Cutwork embroidery
& trim throughout
Easy fit, slim through
rib cage
Tiered, swingy fit
at skirt
3/4 sleeve with cuff
Above the knee
(35.5" HPS)

Blue
Ivory
Fuchsia



Amy
41GT640A

Washed cotton/linen
(70% cotton/30% linen)
Body is lined
(100% cotton)
Cutwork embroidery
& trim throughout
Easy fit, slim through
rib cage
Tiered, swingy fit
at skirt
3/4 sleeve with cuff
Above the knee
(35.5" HPS)

Blue
Ivory
Fuchsia



Ruth
41GT642A

Washed cotton/linen
(70% cotton/30% linen)
Cutwork embroidery
& trim throughout
Body is lined
(100% cotton)
Buttons at front placket
are functional at top &
bottom (zip at back
to enter)
Slim fit through body
Voluminous tier at skirt
Puff sleeve
with elastic smocking
Tie belt at waist
Maxi length (57"HPS)

Blue
Ivory
Fuchsia



Ruth
41GT642A

Washed cotton/linen
(70% cotton/30% linen)
Cutwork embroidery
& trim throughout
Body is lined
(100% cotton)
Buttons at front placket
are functional at top &
bottom (zip at back
to enter)
Slim fit through body
Voluminous tier at skirt
Puff sleeve
with elastic smocking
Tie belt at wasit
Maxi length (57"HPS)

Blue
Ivory
Fuchsia



Ruth
41GT642A

Washed cotton/linen
(70% cotton/30% linen)
Cutwork embroidery
& trim throughout
Body is lined
(100% cotton)
Buttons at front placket
are functional at top &
bottom (zip at back
to enter)
Slim fit through body
Voluminous tier at skirt
Puff sleeve
with elastic smocking
Tie belt at wasit
Maxi length (57"HPS)

Blue
Ivory
Fuchsia







Desert Sun



**Gemma
41RU250A**

Washed Voile
(30% silk/70% cotton)
Jersey cami lining
(95% viscose/5% spandex)
Ruffle & tie at neckline
Deep keyhole
with flower buttons
Long sleeve
with elastic & ruffle at wrist

**Orange
Peach**



**Gemma
41RU250A**

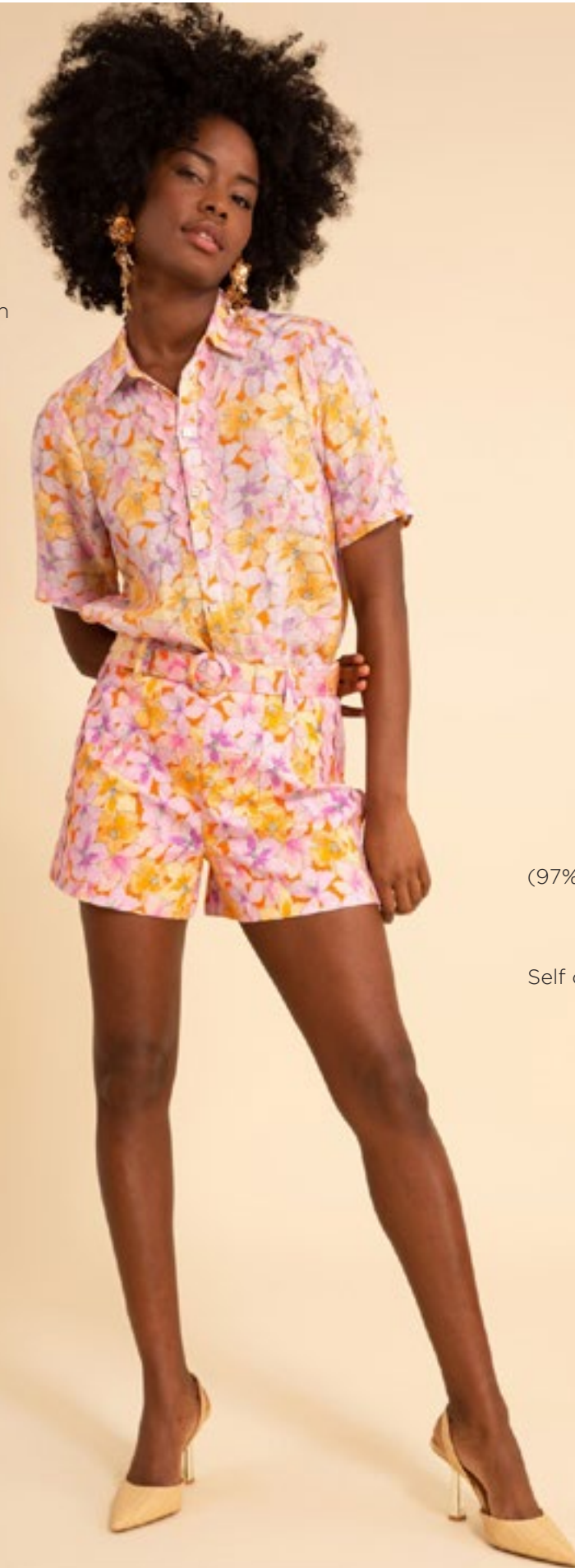
Washed Voile
(30% silk/70% cotton)
Jersey cami lining
(95% viscose/5% spandex)
Ruffle & tie at neckline
Deep keyhole
with flower buttons
Long sleeve
with elastic & ruffle at wrist

**Orange
Peach**

**Taylor
41RU252A**

Lightweight washed linen
(100% linen)
Flower buttons
at front body
Rik-rak trim at collar,
front, and sleeves
Hip length
with curved hem

**Orange
Peach**



**Oakley
41RU550A**

Stretch Canvas
(97% cotton/3% spandex)
High waist silhouette
Welt pocket at back
Invisible side zip
Self covered belt included
Rik-rak trim at sides
3" Inseam

**Orange
Peach**

**Taylor
41RU252A**

Lightweight washed linen
(100% linen)
Flower buttons
at front body
Rik-rak trim at collar,
front, and sleeves
Hip length
with curved hem

**Orange
Peach**



**Oakley
41RU550A**

Stretch Canvas
(97% cotton/3% spandex)
High waist silhouette
Welt pocket at back
Invisible side zip
Self covered belt included
Rik-rak trim at sides
3" Inseam

**Orange
Peach**



**Arabella
41RU650A**

Lightweight washed linen
(100% linen)
Body is lined
(100% viscose)
Cord lace-up at bodice
Slim fit through body
A-line skirt
Puff sleeve with elastic
Zip closure at back
Self covered belt
Midi length (47"HPS)

Orange

*This will be shipped with a supplemental lace-up option for the neck tie made out of printed fabric



**Arabella
41RU650M**

Lightweight washed linen
(100% linen)
Body is lined
(100% viscose)
Cord lace-up at bodice
Slim fit through body
A-line skirt
Puff sleeve with elastic
Zip closure at back
Self covered belt
Maxi length (57"HPS)

**Orange
Peach**

*This will be shipped with a supplemental lace-up option for the neck tie made out of printed fabric

Arabella
41RU650M

Lightweight washed linen
(100% linen)
Body is lined
(100% viscose)
Cord lace-up at bodice
Slim fit through body
A-line skirt
Puff sleeve with elastic
Zip closure at back
Self covered belt
Maxi length (57"HPS)

Orange
Peach

*This will be shipped with a supplemental lace-up option for the neck tie made out of printed fabric



**Journee
41RU652A**

Matte jersey
(96% polyester/
4% spandex)
Elastic with ties at waist
3/4 Sleeve with elastic
Gussets at skirt creates
voluminous swing fit
Above the knee length
(35.5" HPS)

**Orange
Peach**



**Journee
41RU652A**

Matte jersey
(96% polyester/
4% spandex)
Elastic with ties at waist
3/4 Sleeve with elastic
Gussets at skirt creates
voluminous swing fit
Above the knee length
(35.5" HPS)

**Orange
Peach**





**Aspen
41RU654A**

Chiffon
(100% polyester)
Lining
(100% Viscose)
Smocking & ruffles
at neck
Hook & eye hidden
at front neck
Puff sleeve with elastic
Elastic smocked waist
Ruffle skirt
Ankle length

**Orange
Peach**



**Aspen
41RU654A**

Chiffon
(100% polyester)
Lining
(100% Viscose)
Smocking & ruffles
at neck
Hook & eye hidden
at front neck
Puff sleeve with elastic
Elastic smocked waist
Ruffle skirt
Ankle length

**Orange
Peach**





Changing Shapes



**Sara
41SP260A**

Washed georgette
(100% viscose)
Jersey cami lining
(95% viscose/5% spandex)
Long sleeve with ruffles
& smocked cuff
Hip length
with curved hem

**Blue
Pink**



**Sara
41SP260A**

Washed georgette
(100% viscose)
Jersey cami lining
(95% viscose/5% spandex)
Long sleeve with ruffles
& smocked cuff
Hip length
with curved hem

**Blue
Pink**



**Harmony
41SP262A**

Lightweight washed linen
(100% linen)
Long sleeve with tab
to adjust length
Pearlized snaps
at front body & tab
Low hip length
with slits at sides

**Blue
Pink**



**Harmony
41SP262A**

Lightweight washed linen
(100% linen)
Long sleeve with tab
to adjust length
Pearlized snaps
at front body & tab
Low hip length
with slits at sides

**Blue
Pink**



**Alaina
41SP660A**

Lightweight washed linen
(100% linen)
Long sleeve with cuff
Pearlized snaps at front
Gussets at swingy skirt
Above the knee length
(35.5" HPS)

**Blue
Pink**



**Alaina
41SP660A**

Lightweight washed linen
(100% linen)
Long sleeve with cuff
Pearlized snaps at front
Gussets at swingy skirt
Above the knee length
(35.5" HPS)

**Blue
Pink**



**Noelle
41SP662A**

Matte jersey
(90% polyester/
10%spandex)
Pockets at hips
Dropped shoulder
Above the knee length
(35.5" HPS)
Deep hem added
to adjust length

41SP662B
(BEADED)

Hand beading
on neckline

**Blue
Pink**



**Noelle
41SP662A**

Matte jersey
(90% polyester/
10%spandex)
Pockets at hips
Dropped shoulder
Above the knee length
(35.5" HPS)
Deep hem added
to adjust length

41SP662B
(BEADED)

Hand beading
on neckline

**Blue
Pink**



**Oaklynn
41SP664A**

Stretch soft charmeuse
(97% rayon/3% spandex)
Fitted bodice is flat at front
and smocked at back
Tie at bust can be worn
many different ways
Tiered voluminous skirt
Midi length (46" HPS)

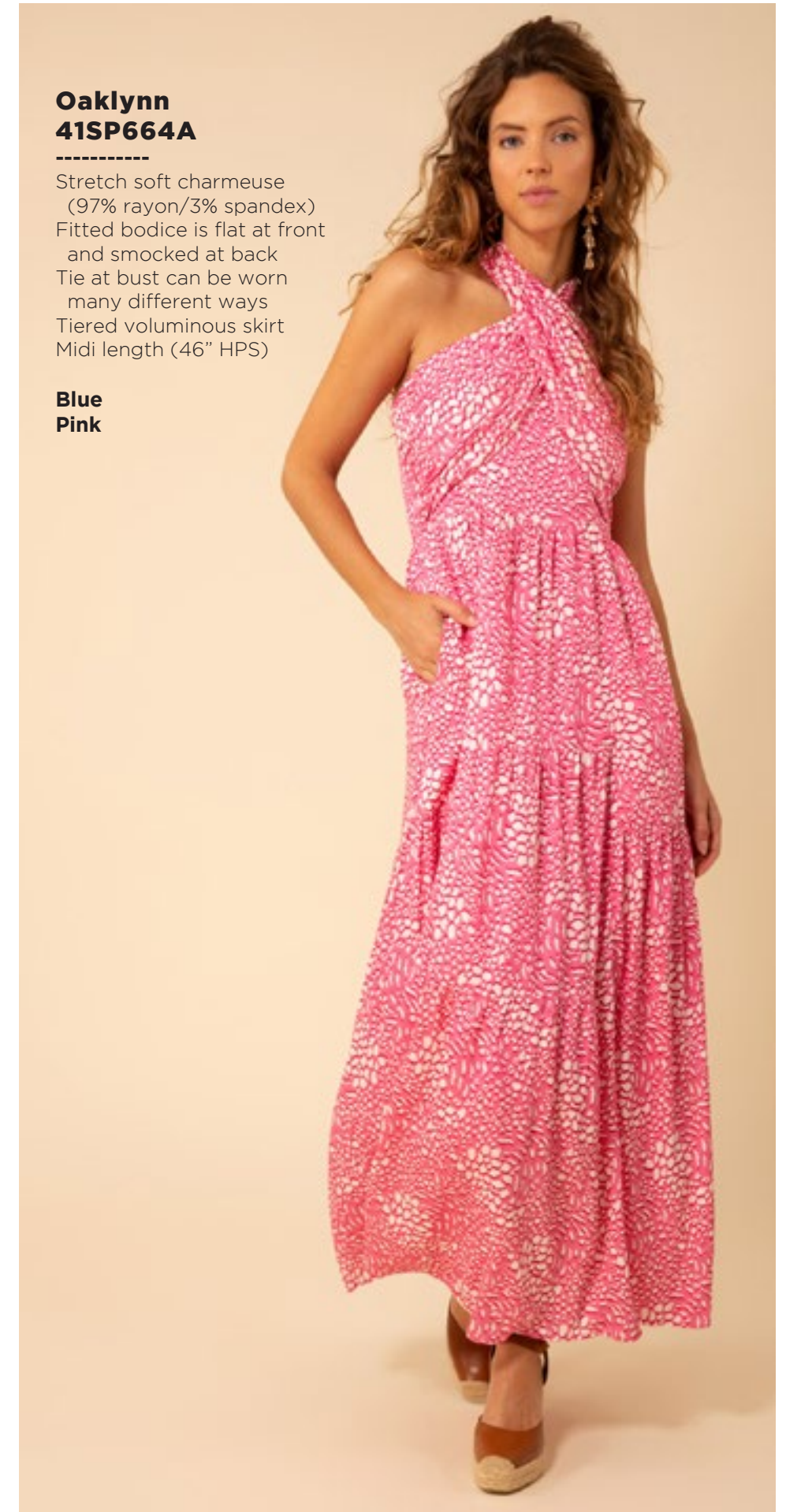
**Blue
Pink**



**Oaklynn
41SP664A**

Stretch soft charmeuse
(97% rayon/3% spandex)
Fitted bodice is flat at front
and smocked at back
Tie at bust can be worn
many different ways
Tiered voluminous skirt
Midi length (46" HPS)

**Blue
Pink**



Dawn to Dusk





Morgan
41WN270A

Washed crepe de chine
(100% silk)
Shirring at front
under yoke
Long full sleeve
with elastic & ruffle
Low hip length
with curved hem

Blue
Pink

Morgan
41WN270A

Washed crepe de chine
(100% silk)
Shirring at front
under yoke
Long full sleeve
with elastic & ruffle
Low hip length
with curved hem

Blue
Pink



**Londyn
41WN272A**

Matte jersey
(96% polyester/
4% spandex)
Short sleeve
Slim fit through body
Hip length

**Blue
Pink**



**Aliyah
41WN570A**

Matte jersey
(96% polyester/
4% spandex)
Elastic at waist
High waist
(9.25" rise)
Slim fit
with flared leg
Full length
(32" inseam)

**Blue
Pink**

**Londyn
41WN272A**

Matte jersey
(96% polyester/
4% spandex)
Short sleeve
Slim fit through body
Hip length

**Blue
Pink**



**Aliyah
41WN570A**

Matte jersey
(96% polyester/
4% spandex)
Elastic at waist
High waist
(9.25" rise)
Slim fit
with flared leg
Full length
(32" inseam)

**Blue
Pink**

**Juliana
41WN670A**

Matte jersey
(96% polyester/
4% spandex)
Mesh lining
(95% nylon/
8% spandex)
Pleat at CF
under placket
Pockets at hips
3/4 Length bell sleeve
Above the knee
(35.5" HPS)
Deep hem added
for length

**41WN670B
(BEADED)**

Hand beading
on neckline

**Blue
Pink**





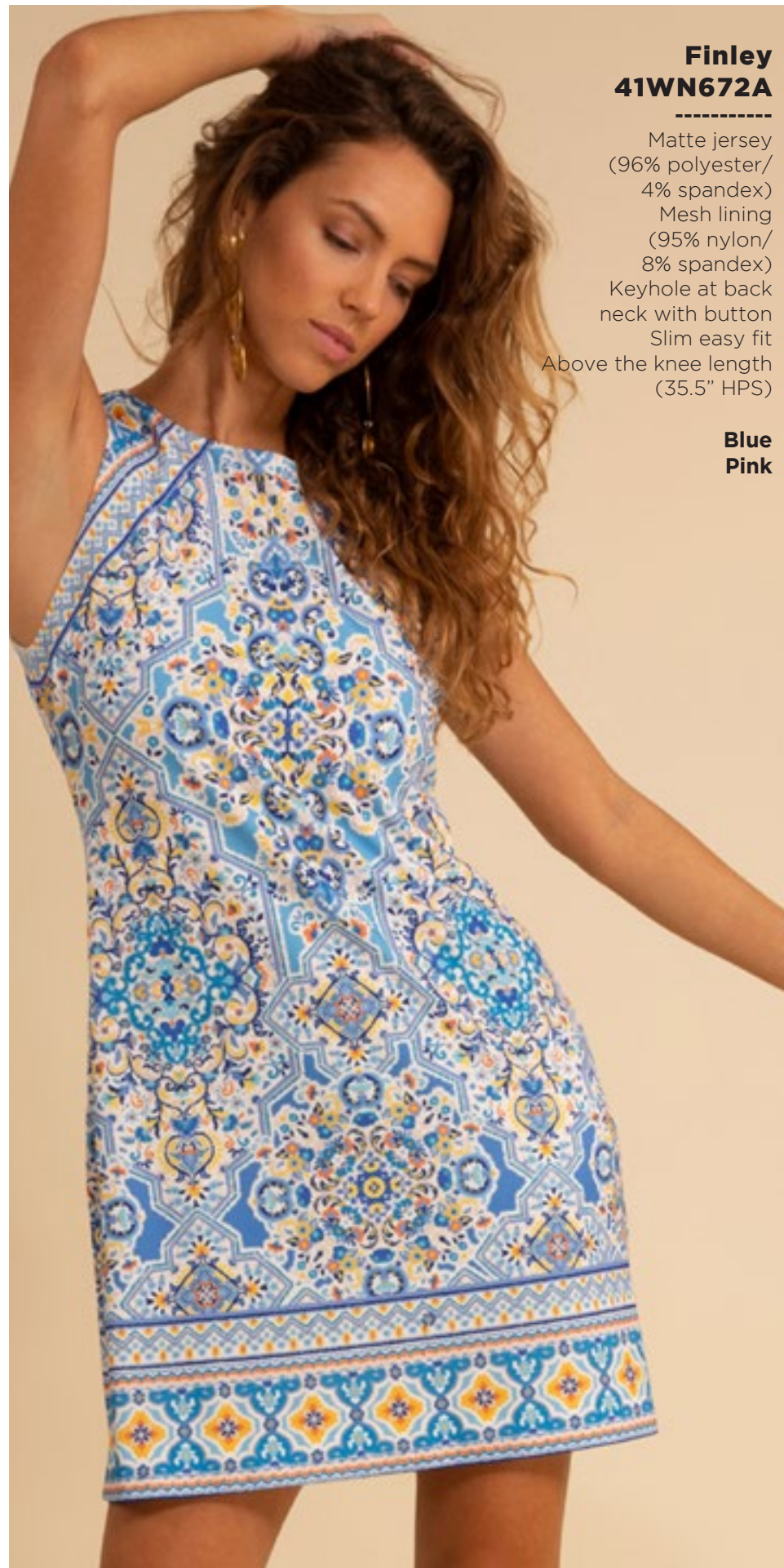
**Juliana
41WN670A**

Matte jersey
(96% polyester/
4% spandex)
Mesh lining
(95% nylon/
8% spandex)
Pleat at CF
under placket
Pockets at hips
3/4 Length bell sleeve
Above the knee
(35.5" HPS)
Deep hem added
for length

**41WN670B
(BEADED)**

Hand beading
on neckline

**Blue
Pink**



**Finley
41WN672A**

Matte jersey
(96% polyester/
4% spandex)
Mesh lining
(95% nylon/
8% spandex)
Keyhole at back
neck with button
Slim easy fit
Above the knee length
(35.5" HPS)

**Blue
Pink**



**Finley
41WN672A**

Matte jersey
(96% polyester/
4% spandex)
Mesh lining
(95% nylon/
8% spandex)
Keyhole at back
neck with button
Slim easy fit
Above the knee length
(35.5" HPS)

**Blue
Pink**

**Jordyn
41WN674A**

Poly Chiffon
Halter top
with center keyhole
Metal chain necklace
with woven grosgrain
ribbon
Smocked waistband
Tiered voluminous skirt
with slit at lower tiers
Ankle length
with slight hi/low
(49" HPS at front,
52" at back)

**Blue
Pink**



**Jordyn
41WN674A**

Poly Chiffon
Halter top
with center keyhole
Metal chain necklace
with woven grosgrain
ribbon
Smocked waistband
Tiered voluminous skirt
with slit at lower tiers
Ankle length
with slight hi/low
(49" HPS at front,
52" at back)

**Blue
Pink**



**Aubrey
41WN676A**

Washed chiffon
(70% rayon/30% silk)
Challis lining
(100% Viscose)
Bodice with shirring detail
Short sleeve with pleating
Smocking at waist
Pockets at hips
Tier at lower skirt
Above the knee
(35.5" HPS)

**Blue
Pink**

*The fit of this bodice
will be adjusted in
production.





**Aubrey
41WN676A**

Washed chiffon
(70% rayon/30% silk)
Challis lining
(100% Viscose)
Bodice with shirring detail
Short sleeve with pleating
Smocking at waist
Pockets at hips
Tier at lower skirt
Above the knee
(35.5" HPS)

**Blue
Pink**

*The fit of this bodice
will be adjusted in
production.



**Aubrey
41WN676M**

Washed chiffon
(70% rayon/30% silk)
Challis lining
(100% Viscose)
Bodice with shirring detail
Short sleeve with pleating
Smocking at waist
Pockets at hips
Tier at lower skirt
Maxi length
(58" HPS)

Pink

*The fit of this bodice
will be adjusted in
production.

This book is a presentation of a selection of Hale Bob product and is correct at time of publication.

To view the entire collection of products including updates and additions. You can view product line sheets at halebob.com by logging into the "Merchant" section of our website.

Prices and products posted in this book are current at time of publication but are subject to change.

Sales Director

East Coast
South East
Puerto Rico
Canada
Majors

Cathy Cooley

310-963-2463
cathy@halebob.com

Sales Executive

Mexico
Central America
South America

Isabela Peralta

323-394-1739
isabela@halebob.com

Sales Executive

Midwest

Tracy Holden

214-454-1176
tracy@halebob.com

For Marketing & Press Inquiries:

Marianna Gunther
marianna@halebob.com

HALE BOB

LOS ANGELES

