

HALE BOB

LOS ANGELES

Season 12





Water
Colorful



**Kaitlyn
4ZCA210A**

Jersey
(95% viscose/
5% spandex)
Buttons at front placket
Swingy bell sleeve
Hip length
with curved hem

**Beige
Green
Pink**



**Kaitlyn
4ZCA210A**

Jersey
(95% viscose/
5% spandex)
Buttons at front placket
Swingy bell sleeve
Hip length
with curved hem

**Beige
Green
Pink**



**Kaitlyn
4ZCA210A**

Jersey
(95% viscose/
5% spandex)
Buttons at front placket
Swingy bell sleeve
Hip length
with curved hem

**Beige
Green
Pink**



**Michaela
4ZCA212A**

Washed chiffon
(70% rayon/30% silk)
Jersey lining at body
(95% viscose/
5% spandex)
Long sleeve
with smocked cuff
Buttons at
front placket
Low hip length
with curved hem

**Beige
Green
Pink**



**Michaela
4ZCA212A**

Washed chiffon
(70% rayon/30% silk)
Jersey lining at body
(95% viscose/
5% spandex)
Long sleeve
with smocked cuff
Buttons at
front placket
Low hip length
with curved hem

**Beige
Green
Pink**



**Michaela
4ZCA212A**

Washed chiffon
(70% rayon/30% silk)
Jersey lining at body
(95% viscose/
5% spandex)
Long sleeve
with smocked cuff
Buttons at
front placket
Low hip length
with curved hem

**Beige
Green
Pink**



Nia
4ZCA214A

Washed linen
(100% linen)
Buttons at center front
Long sleeve with tab
to adjust length
Straight hem
with side slits
Hip length

Beige
Green
Pink



Fernanda
4ZCA510A

Washed linen
(100% linen)
Fully lined
(100% viscose)
Flat front waist,
smocked back
Self tie around waist
Pockets at hips
Easy fit leg
with slight flare
Full length
(31.5" inseam)

Beige
Green
Pink

Nia
4ZCA214A

Washed linen
(100% linen)
Buttons at center front
Long sleeve with tab
to adjust length
Straight hem
with side slits
Hip length

Beige
Green
Pink



Fernanda
4ZCA510A

Washed linen
(100% linen)
Fully lined
(100% viscose)
Flat front waist,
smocked back
Self tie around waist
Pockets at hips
Easy fit leg
with slight flare
Full length
(31.5" inseam)

Beige
Green
Pink

Nia
4ZCA214A

Washed linen
(100% linen)
Buttons at center front
Long sleeve with tab
to adjust length
Straight hem
with side slits
Hip length

Beige
Green
Pink



Fernanda
4ZCA510A

Washed linen
(100% linen)
Fully lined
(100% viscose)
Flat front waist,
smocked back
Self tie around waist
Pockets at hips
Easy fit leg
with slight flare
Full length
(31.5" inseam)

Beige
Green
Pink



**Jaliyah
4ZCA610A**

Washed chiffon
(70% rayon/30% silk)
Jersey lining
(95% viscose/
5% spandex)
Bell sleeve
smocked waistband
Pleating at front skirt
Pockets at hips
Above the knee
(35.5" HPS)

**Beige
Green
Pink**



**Jaliyah
4ZCA610A**

Washed chiffon
(70% rayon/30% silk)
Jersey lining
(95% viscose/
5% spandex)
Bell sleeve
smocked waistband
Pleating at front skirt
Pockets at hips
Above the knee
(35.5" HPS)

**Beige
Green
Pink**



**Jaliyah
4ZCA610A**

Washed chiffon
(70% rayon/30% silk)
Jersey lining
(95% viscose/
5% spandex)
Bell sleeve
smocked waistband
Pleating at front skirt
Pockets at hips
Above the knee
(35.5" HPS)

**Beige
Green
Pink**

Jaliyah
4ZCA610M- MAXI

Washed chiffon
(70% rayon/30% silk)
Jersey lining
(95% viscose/
5% spandex)
Bell sleeve
smocked waistband
Pleating at front skirt
Pockets at hips
Maxi length
(58" HPS)

Beige
Green
Pink



Jaliyah
4ZCA610M- MAXI

Washed chiffon
(70% rayon/30% silk)
Jersey lining
(95% viscose/
5% spandex)
Bell sleeve
smocked waistband
Pleating at front skirt
Pockets at hips
Maxi length
(58" HPS)

Beige
Green
Pink



Jaliyah
4ZCA610M- MAXI

Washed chiffon
(70% rayon/30% silk)
Jersey lining
(95% viscose/
5% spandex)
Bell sleeve
smocked waistband
Pleating at front skirt
Pockets at hips
Maxi length
(58" HPS)

Beige
Green
Pink



**Miranda
4ZCA612A**

Lightweight washed linen
(100% linen)
Challis lining
(100% viscose)
Buttons at front body
(functional at top &
bottom, stationary
through waist/hip)
Invisible zipper at
back body
Self belt at waist
3/4 sleeve with
elastic opening
Swingy voluminous skirt
Above the knee
(35.5" HPS)

**Beige
Green
Pink**



**Miranda
4ZCA612A**

Lightweight washed linen
(100% linen)
Challis lining
(100% viscose)
Buttons at front body
(functional at top &
bottom, stationary
through waist/hip)
Invisible zipper at
back body
Self belt at waist
3/4 sleeve with
elastic opening
Swingy voluminous skirt
Above the knee
(35.5" HPS)

**Beige
Green
Pink**



**Miranda
4ZCA612A**

Lightweight washed linen
(100% linen)
Challis lining
(100% viscose)
Buttons at front body
(functional at top &
bottom, stationary
through waist/hip)
Invisible zipper at
back body
Self belt at waist
3/4 sleeve with
elastic opening
Swingy voluminous skirt
Above the knee
(35.5" HPS)

**Beige
Green
Pink**



**Miranda
4ZCA612M
(Ankle Length)**

Lightweight washed linen
(100% linen)
Challis lining
(100% viscose)
Buttons at front body
(functional at top &
bottom, stationary
through waist/hip)
Invisible zipper at
back body
Self belt at waist
3/4 sleeve with
elastic opening
Swingy voluminous skirt
Ankle length
(51" HPS)

**Beige
Green
Pink**



**Miranda
4ZCA612M
(Ankle Length)**

Lightweight washed linen
(100% linen)
Challis lining
(100% viscose)
Buttons at front body
(functional at top &
bottom, stationary
through waist/hip)
Invisible zipper at
back body
Self belt at waist
3/4 sleeve with
elastic opening
Swingy voluminous skirt
Ankle length
(51" HPS)

**Beige
Green
Pink**



**Miranda
4ZCA612M
(Ankle Length)**

Lightweight washed linen
(100% linen)
Challis lining
(100% viscose)
Buttons at front body
(functional at top &
bottom, stationary
through waist/hip)
Invisible zipper at
back body
Self belt at waist
3/4 sleeve with
elastic opening
Swingy voluminous skirt
Ankle length
(51" HPS)

**Beige
Green
Pink**







**Anne
4ZCA614A**

Matte jersey
(96% polyester/
4% spandex)
Mesh lining
(92% nylon/8% spandex)
Pleat at CF under placket
Pockets at hips
3/4 sleeve with cuff
at opening
Deep hem added
for length
Above the knee
(35.5" HPS)

**Beige
Green
Pink**



**Anne
4ZCA614A**

Matte jersey
(96% polyester/
4% spandex)
Mesh lining
(92% nylon/8% spandex)
Pleat at CF under placket
Pockets at hips
3/4 sleeve with cuff
at opening
Deep hem added
for length
Above the knee
(35.5" HPS)

**Beige
Green
Pink**



**Anne
4ZCA614A**

Matte jersey
(96% polyester/
4% spandex)
Mesh lining
(92% nylon/8% spandex)
Pleat at CF under placket
Pockets at hips
3/4 sleeve with cuff
at opening
Deep hem added
for length
Above the knee
(35.5" HPS)

**Beige
Green
Pink**



**Anne
4ZCA614D - MIDI**

Matte jersey
(96% polyester/
4% spandex)
Mesh lining
(92% nylon/8% spandex)
Pleat at CF under placket
Pockets at hips
3/4 sleeve with cuff
at opening
Deep hem added
for length
Below the knee
(41" HPS)

**Beige
Green
Pink**



**Anne
4ZCA614D - MIDI**

Matte jersey
(96% polyester/
4% spandex)
Mesh lining
(92% nylon/8% spandex)
Pleat at CF under placket
Pockets at hips
3/4 sleeve with cuff
at opening
Deep hem added
for length
Below the knee
(41" HPS)

**Beige
Green
Pink**



**Anne
4ZCA614D - MIDI**

Matte jersey
(96% polyester/
4% spandex)
Mesh lining
(92% nylon/8% spandex)
Pleat at CF under placket
Pockets at hips
3/4 sleeve with cuff
at opening
Deep hem added
for length
Below the knee
(41" HPS)

**Beige
Green
Pink**



**Aileen
4ZCA616A**

Washed silk/
viscose charmeuse
(25% silk/75% viscose)
Long flared sleeve
Borders at sides
with high slit
Maxi length
(57.5" HPS)

**4ZCA616B
(BEADED)**

Hand beading
on neckline

**Beige
Green
Pink**



**Aileen
4ZCA616A**

Washed silk/
viscose charmeuse
(25% silk/75% viscose)
Long flared sleeve
Borders at sides
with high slit
Maxi length
(57.5" HPS)

**4ZCA616B
(BEADED)**

Hand beading
on neckline

**Beige
Green
Pink**



**Aileen
4ZCA616A**

Washed silk/
viscose charmeuse
(25% silk/75% viscose)
Long flared sleeve
Borders at sides
with high slit
Maxi length
(57.5" HPS)

**4ZCA616B
(BEADED)**

Hand beading
on neckline

**Beige
Green
Pink**

Mina
4ZCA810A

Scuba Swim
(95% polyester/
5% spandex)
Zip at front

Beige
Green
Pink



Mina
4ZCA810A

Scuba Swim
(95% polyester/
5% spandex)
Zip at front

Beige
Green
Pink



Mina
4ZCA810A

Scuba Swim
(95% polyester/
5% spandex)
Zip at front

Beige
Green
Pink





Sun Seeker



Myra
4ZEK220A

Washed chiffon
(70% rayon/30% silk)
Jersey lining
(95% viscose/
5% spandex)
Ruffle at neck
with elastic & tie-
can be worn on or
off the shoulder
Hip length

Beige
Navy
Pink



Myra
4ZEK220A

Washed chiffon
(70% rayon/30% silk)
Jersey lining
(95% viscose/
5% spandex)
Ruffle at neck
with elastic & tie-
can be worn on or
off the shoulder
Hip length

Beige
Navy
Pink



Myra
4ZEK220A

Washed chiffon
(70% rayon/30% silk)
Jersey lining
(95% viscose/
5% spandex)
Ruffle at neck
with elastic & tie-
can be worn on or
off the shoulder
Hip length

Beige
Navy
Pink

**Aleena
4ZEK222A**

Stretch charmeuse
(71% rayon/23% silk/
6%spandex)
Oversize fit
Buttons at front
Low hip length

**Beige
Navy
Pink**



**Frankie
4ZEK520A**

Stretch charmeuse
(71% rayon/23% silk/
6%spandex)
Oversize fit
Elastic at waist
Pockets at hips
Wide leg fit
Full length
(31" inseam)

**Beige
Navy
Pink**

**Aleena
4ZEK222A**

Stretch charmeuse
(71% rayon/23% silk/
6%spandex)
Oversize fit
Buttons at front
Low hip length

**Beige
Navy
Pink**



**Frankie
4ZEK520A**

Stretch charmeuse
(71% rayon/23% silk/
6%spandex)
Oversize fit
Elastic at waist
Pockets at hips
Wide leg fit
Full length
(31" inseam)

**Beige
Navy
Pink**

**Aleena
4ZEK222A**

Stretch charmeuse
(71% rayon/23% silk/
6%spandex)
Oversize fit
Buttons at front
Low hip length

**Beige
Navy
Pink**



**Frankie
4ZEK520A**

Stretch charmeuse
(71% rayon/23% silk/
6%spandex)
Oversize fit
Elastic at waist
Pockets at hips
Wide leg fit
Full length
(31" inseam)

**Beige
Navy
Pink**



**Alia
4ZEK620A**

Matte jersey
(96% polyester/
4% spandex)
Shirring at front &
back body
Dropped shoulder
Slim fit through body
Voluminous lower with
gusset flounce hem
Midi length
(47" HPS)

**Beige
Navy
Pink**



**Alia
4ZEK620A**

Matte jersey
(96% polyester/
4% spandex)
Shirring at front &
back body
Dropped shoulder
Slim fit through body
Voluminous lower with
gusset flounce hem
Midi length
(47" HPS)

**Beige
Navy
Pink**



**Alia
4ZEK620A**

Matte jersey
(96% polyester/
4% spandex)
Shirring at front &
back body
Dropped shoulder
Slim fit through body
Voluminous lower with
gusset flounce hem
Midi length
(47" HPS)

**Beige
Navy
Pink**



**Capri
4ZEK320A**

Cotton jacquard sweater
(100% Cotton)
Pockets at hips, buttons
at front for closure option
Low hip length
(28" HPS)

**Beige
Navy
Pink**



**Capri
4ZEK320A**

Cotton jacquard sweater
(100% Cotton)
Pockets at hips, buttons
at front for closure option
Low hip length
(28" HPS)

**Beige
Navy
Pink**



**Capri
4ZEK320A**

Cotton jacquard sweater
(100% Cotton)
Pockets at hips, buttons
at front for closure option
Low hip length
(28" HPS)

**Beige
Navy
Pink**

Capri
4ZEK320D

Cotton jacquard sweater
(100% Cotton)
Pockets at hips, buttons
at front for closure option
Mid-thigh length
(38" HPS)

Beige
Navy
Pink



Capri
4ZEK320D

Cotton jacquard sweater
(100% Cotton)
Pockets at hips, buttons
at front for closure option
Mid-thigh length
(38" HPS)

Beige
Navy
Pink



Capri
4ZEK320D

Cotton jacquard sweater
(100% Cotton)
Pockets at hips, buttons
at front for closure option
Low hip length
(28" HPS)

Beige
Navy
Pink



Ellis
4ZEK622A

Chiffon
(100% polyester)
Jersey lining
(95% viscose/
5% spandex)
Swingy bell sleeve
Elastic smocking at waist
Voluminous paneled skirt
Pockets at hips
Maxi length
(57" HPS)

Beige
Navy
Pink



Ellis
4ZEK622A

Chiffon
(100% polyester)
Jersey lining
(95% viscose/
5% spandex)
Swingy bell sleeve
Elastic smocking at waist
Voluminous paneled skirt
Pockets at hips
Maxi length
(57" HPS)

Beige
Navy
Pink



Ellis
4ZEK622A

Chiffon
(100% polyester)
Jersey lining
(95% viscose/
5% spandex)
Swingy bell sleeve
Elastic smocking at waist
Voluminous paneled skirt
Pockets at hips
Maxi length
(57" HPS)

Beige
Navy
Pink





**Kathryn
4ZEK624A**

Matte jersey
(96% polyester/
4% spandex)
Collar with mid length
placket with buttons
Pockets at hips
3/4 sleeve
Border detail at hem
with side slits
Above the knee length
(35.5" HPS)

**Beige
Navy
Pink**



**Kathryn
4ZEK624A**

Matte jersey
(96% polyester/
4% spandex)
Collar with mid length
placket with buttons
Pockets at hips
3/4 sleeve
Border detail at hem
with side slits
Above the
knee length
(35.5" HPS)

**Beige
Navy
Pink**



**Kathryn
4ZEK624A**

Matte jersey
(96% polyester/
4% spandex)
Collar with mid length
placket with buttons
Pockets at hips
3/4 sleeve
Border detail at hem
with side slits
Above the knee length
(35.5" HPS)

**Beige
Navy
Pink**





**Nalani
4ZEK626A**

Stretch charmeuse
(71% rayon/23% silk/
6%spandex)
Long flared sleeve
Borders at sides
with high slit
Maxi length
(57.5" HPS)

**Beige
Navy
Pink**



**Nalani
4ZEK626A**

Stretch charmeuse
(71% rayon/23% silk/
6%spandex)
Long flared sleeve
Borders at sides
with high slit
Maxi length
(57.5" HPS)

**Beige
Navy
Pink**



**Nalani
4ZEK626A**

Stretch charmeuse
(71% rayon/23% silk/
6%spandex)
Long flared sleeve
Borders at sides
with high slit
Maxi length
(57.5" HPS)

**Beige
Navy
Pink**



**Nola
4ZEK820A**

Stretch swim
(75% nylon/
25% spandex)
Scoop neck
with low scoop back

**Beige
Navy
Pink**



**Nola
4ZEK820A**

Stretch swim
(75% nylon/
25% spandex)
Scoop neck
with low scoop back

**Beige
Navy
Pink**



Nola
4ZEK820A

Stretch swim
(75% nylon/
25% spandex)
Scoop neck
with low scoop back

Beige
Navy
Pink



Limited
Edition
Denim



**Blake
ODEN510B**

Stretch denim
LTB/NAV content:
80% cotton/
18% polyester/
2% spandex
BLK/WHT content:
96% cotton/
3% Polyester/1% spandex
High waist (12" rise)
Wide leg with flare
Stitched pin tuck
at front & back
Side pockets at front
Patch pockets at back
33" inseam
with invisible hem
Deep hem
to adjust length

Black
Light blue wash
Dark blue wash
White



**Blake
ODEN510B**

Stretch denim
LTB/NAV content:
80% cotton/
18% polyester/
2% spandex
BLK/WHT content:
96% cotton/
3% Polyester/1% spandex
High waist (12" rise)
Wide leg with flare
Stitched pin tuck
at front & back
Side pockets at front
Patch pockets at back
33" inseam
with invisible hem
Deep hem
to adjust length

Black
Light blue wash
Dark blue wash
White



**Blake
ODEN510B**

Stretch denim
LTB/NAV content:
80% cotton/
18% polyester/
2% spandex
BLK/WHT content:
96% cotton/
3% Polyester/1% spandex
High waist (12" rise)
Wide leg with flare
Stitched pin tuck
at front & back
Side pockets at front
Patch pockets at back
33" inseam
with invisible hem
Deep hem
to adjust length

Black
Light blue wash
Dark blue wash
White



Blake
ODEN510B

Stretch denim
LTB/NAV content:
80% cotton/
18% polyester/
2% spandex
BLK/WHT content:
96% cotton/
3% Polyester/1% spandex
High waist (12" rise)
Wide leg with flare
Stitched pin tuck
at front & back
Side pockets at front
Patch pockets at back
33" inseam
with invisible hem
Deep hem
to adjust length

Black
Light blue wash
Dark blue wash
White



Jenna
ODEN512A

Stretch denim
LTB/NAV content:
80% cotton/
18% polyester/2% spandex
BLK/WHT content:
96% cotton/
3% Polyester/1% spandex
High waist (11.5" rise)
Patch pockets
at front & back
Straight leg
with slight flare
33" inseam
with invisible hem
Deep hem
to adjust length

Black
Light blue wash
Dark blue wash
White





**Jenna
ODEN512A**

Stretch denim
LTB/NAV content:
80% cotton/
18% polyester/2% spandex
BLK/WHT content:
96% cotton/
3% Polyester/1% spandex
High waist (11.5" rise)
Patch pockets
at front & back
Straight leg
with slight flare
33" inseam
with invisible hem
Deep hem
to adjust length

Black
Light blue wash
Dark blue wash
White



**Jenna
ODEN512A**

Stretch denim
LTB/NAV content:
80% cotton/
18% polyester/2% spandex
BLK/WHT content:
96% cotton/
3% Polyester/1% spandex
High waist (11.5" rise)
Patch pockets
at front & back
Straight leg
with slight flare
33" inseam
with invisible hem
Deep hem
to adjust length

Black
Light blue wash
Dark blue wash
White



**Jenna
ODEN512A**

Stretch denim
LTB/NAV content:
80% cotton/
18% polyester/2% spandex
BLK/WHT content:
96% cotton/
3% Polyester/1% spandex
High waist (11.5" rise)
Patch pockets
at front & back
Straight leg
with slight flare
33" inseam
with invisible hem
Deep hem
to adjust length

Black
Light blue wash
Dark blue wash
White

Spirited Away





**Jemma
4ZFA230A**

Embroidered gauze
(100% viscose)
Full lined
(100% viscose)
Buttons at front
Long sleeve with
smocked cuff
Hip length
with curved hem

**Black
Blue
Coral**



**Jemma
4ZFA230A**

Embroidered gauze
(100% viscose)
Full lined
(100% viscose)
Buttons at front
Long sleeve with
smocked cuff
Hip length
with curved hem

**Black
Blue
Coral**



**Jemma
4ZFA230A**

Embroidered gauze
(100% viscose)
Full lined
(100% viscose)
Buttons at front
Long sleeve with
smocked cuff
Hip length
with curved hem

**Black
Blue
Coral**

**Lennox
4ZFA630A**

Embroidered gauze
(100% viscose)
Full lined
(100% viscose)
Flutter sleeve
Pockets at hips
Tier at hem
Trim detail at
yokes & sleeve
Above the knee length
(35.5" HPS)

**Black
Blue
Coral**



**Lennox
4ZFA630A**

Embroidered gauze
(100% viscose)
Full lined
(100% viscose)
Flutter sleeve
Pockets at hips
Tier at hem
Trim detail at
yokes & sleeve
Above the knee length
(35.5" HPS)

**Black
Blue
Coral**



**Lennox
4ZFA630A**

Embroidered gauze
(100% viscose)
Full lined
(100% viscose)
Flutter sleeve
Pockets at hips
Tier at hem
Trim detail at
yokes & sleeve
Above the knee length
(35.5" HPS)

**Black
Blue
Coral**





**Cassandra
4ZFA632A**

Embroidered organza
(70% Rayon/30% Nylon)
3/4 length sleeve
Voluminous swing skirt
Pockets at sides
Invisible zip at back
Smocked panel at back
bodice for comfortable
slim fit
Above the knee length
(35.5" HPS)

**Black
Blue
Pink**



**Cassandra
4ZFA632A**

Embroidered organza
(70% Rayon/30% Nylon)
3/4 length sleeve
Voluminous swing skirt
Pockets at sides
Invisible zip at back
Smocked panel at back
bodice for comfortable
slim fit
Above the knee length
(35.5" HPS)

**Black
Blue
Pink**



**Cassandra
4ZFA632A**

Embroidered organza
(70% Rayon/30% Nylon)
3/4 length sleeve
Voluminous swing skirt
Pockets at sides
Invisible zip at back
Smocked panel at back
bodice for comfortable
slim fit
Above the knee length
(35.5" HPS)

**Black
Blue
Pink**

**Cassandra
4ZFA632M - MAXI**

Embroidered organza
(70% Rayon/30% Nylon)
3/4 length sleeve
Voluminous swing skirt
Pockets at sides
Invisible zip at back
Smocked panel at back
bodice for comfortable
slim fit
Maxi length
(57" HPS)

**Black
Blue
Pink**



**Cassandra
4ZFA632M - MAXI**

Embroidered organza
(70% Rayon/30% Nylon)
3/4 length sleeve
Voluminous swing skirt
Pockets at sides
Invisible zip at back
Smocked panel at back
bodice for comfortable
slim fit
Maxi length
(57" HPS)

**Black
Blue
Pink**



**Cassandra
4ZFA632M - MAXI**

Embroidered organza
(70% Rayon/30% Nylon)
3/4 length sleeve
Voluminous swing skirt
Pockets at sides
Invisible zip at back
Smocked panel at back
bodice for comfortable
slim fit
Maxi length
(57" HPS)

**Black
Blue
Pink**





Flying High





**Calliope
4ZGH240A**

Washed Voile
(30% silk/70% cotton)
Buttons at front body
Pintucking at front &
back yokes
Trim at neck &
shoulder insert
Long sleeve with cuff

**Beige
Pink**



**Calliope
4ZGH240A**

Washed Voile
(30% silk/70% cotton)
Buttons at front body
Pintucking at front &
back yokes
Trim at neck &
shoulder insert
Long sleeve with cuff

**Beige
Pink**



**Adrianna
4ZGH242A**

Washed crepe de chine
(100% silk)
Trim at neck & front
placket
Long sleeve
with smocked cuff
Hip length
with curved hem

**Beige
Pink**

**Adrianna
4ZGH242A**

Washed crepe de chine
(100% silk)
Trim at neck & front
placket
Long sleeve
with smocked cuff
Hip length
with curved hem

**Beige
Pink**



**Ivanna
4ZGH640A**

Matte jersey
(96% polyester/
4% spandex)
Mesh lining
(92% nylon/8% spandex)
keyhole at back neck
with button
Slim easy fit
Above the knee length
(35.5" HPS)

**Beige
Pink**



**Ivanna
4ZGH640A**

Matte jersey
(96% polyester/
4% spandex)
Mesh lining
(92% nylon/8% spandex)
keyhole at back neck
with button
Slim easy fit
Above the knee length
(35.5" HPS)

**Beige
Pink**





**Zelda
4ZGH642A**

Washed Voile
(100% cotton)
Body is lined
(100% viscose)
Voluminous body
& sleeve
Trim around yoke
at front & back
Pockets at hips
Above the knee length
(35.5" HPS)

**Beige
Pink**



**Zelda
4ZGH642A**

Washed Voile
(100% cotton)
Body is lined
(100% viscose)
Voluminous body
& sleeve
Trim around yoke
at front & back
Pockets at hips
Above the knee length
(35.5" HPS)

**Beige
Pink**



**Faye
4ZGH644A**

Lightweight washed
linen/cotton
(55% Linen/45% Cotton)
Challis lining
(100% viscose)
Tie belt at waist
Buttons at front bodice
Invisible zipper
at back body
Short sleeve with
smocked cuff
Trim at neck
Swingy skirt
Above the knee length
(35.5" HPS)

**Beige
Pink**

Faye
4ZGH644A

Lightweight washed
linen/cotton
(55% Linen/45% Cotton)
Challis lining
(100% viscose)
Tie belt at waist
Buttons at front bodice
Invisible zipper
at back body
Short sleeve with
smocked cuff
Trim at neck
Swingy skirt
Above the knee length
(35.5" HPS)

Beige
Pink



Faye
4ZGH644M
Ankle Length

Lightweight washed
linen/cotton
(55% Linen/45% Cotton)
Challis lining
(100% viscose)
Tie belt at waist
Buttons at front bodice
Invisible zipper
at back body
Short sleeve with
smocked cuff
Trim at neck
Swingy skirt
Ankle length
(51" HPS)

Beige
Pink



Faye
4ZGH644M
Ankle Length

Lightweight washed
linen/cotton
(55% Linen/45% Cotton)
Challis lining
(100% viscose)
Tie belt at waist
Buttons at front bodice
Invisible zipper
at back body
Short sleeve with
smocked cuff
Trim at neck
Swingy skirt
Ankle length
(51" HPS)

Beige
Pink





**Karsyn
4ZGH646A**

Washed chiffon
(100% polyester)
Fully lined
Smocked waistband
Flutter sleeve
Tiered flounce skirt
Slit at center front leg
starting at mid-thigh
Maxi length
(58" HPS)

**Beige
Pink**



**Karsyn
4ZGH646A**

Washed chiffon
(100% polyester)
Fully lined
Smocked waistband
Flutter sleeve
Tiered flounce skirt
Slit at center front leg
starting at mid-thigh
Maxi length
(58" HPS)

**Beige
Pink**



Flower Girl



**Oakleigh
4ZLW250A**

Crochet
(100% cotton)
Jersey lining
(95% viscose/
5% spandex)
Bell sleeve
Elastic with tie at waist
High hip length

**Ivory
Navy**



**Dayana
4ZLW550A**

Crochet
(100% cotton)
Jersey lining
(95% viscose/
5% spandex)
Smocked waistband
Pockets at hips
Trim at hem
*Note: Trim can be
re-applied if hemming
is needed
Full length
(31" inseam)

**Ivory
Navy**

**Oakleigh
4ZLW250A**

Crochet
(100% cotton)
Jersey lining
(95% viscose/
5% spandex)
Bell sleeve
Elastic with tie at waist
High hip length

**Ivory
Navy**



**Dayana
4ZLW550A**

Crochet
(100% cotton)
Jersey lining
(95% viscose/
5% spandex)
Smocked waistband
Pockets at hips
Trim at hem
*Note: Trim can be
re-applied if hemming
is needed
Full length
(31" inseam)

**Ivory
Navy**



**Amirah
4ZLW650A**

Crochet
(100% cotton)
Jersey lining
(95% viscose/
5% spandex)
Keyhole at front with
button at neck
Trim at neck & hem
*Note: Trim can be
re-applied if hemming
is needed
Above the knee
(35.5"HPS)

**Ivory
Navy**



**Amirah
4ZLW650A**

Crochet
(100% cotton)
Jersey lining
(95% viscose/
5% spandex)
Keyhole at front with
button at neck
Trim at neck & hem
*Note: Trim can be
re-applied if hemming
is needed
Above the knee
(35.5"HPS)

**Ivory
Navy**



**Amirah
4ZLW650M - Maxi**

Crochet
(100% cotton)
Jersey lining
(95% viscose/
5% spandex)
Keyhole at front with
button at neck
Trim at neck & hem
*Note: Trim can be
re-applied if hemming
is needed
Maxi length
(55" HPS)

**Ivory
Navy**

Amirah
4ZLW650M - Maxi

Crochet
(100% cotton)
Jersey lining
(95% viscose/
5% spandex)
Keyhole at front with
button at neck
Trim at neck & hem
*Note: Trim can be
re-applied if hemming
is needed
Maxi length
(55" HPS)

Ivory
Navy



Between
The
Lines



Megan
4ZTN260A

Silk Cotton Voile
(30% silk/70% cotton)
Jersey cami lining
(95% viscose/
5% spandex)
Ruffle at neck, deep
keyhole with buttons
Long sleeve with
elastic & ruffle
Hip length

**Olive
Orange**



Megan
4ZTN260A

Silk Cotton Voile
(30% silk/70% cotton)
Jersey cami lining
(95% viscose/
5% spandex)
Ruffle at neck, deep
keyhole with buttons
Long sleeve with
elastic & ruffle
Hip length

**Olive
Orange**



Siena
4ZTN262A

Washed silk/
viscose charmeuse
(25% silk/75% viscose)
Buttons at front body
Long sleeve with tab
to adjust length
Hip length

**Olive
Orange**





Siena
4ZTN262A

Washed silk/
viscose charmeuse
(25% silk/75% viscose)
Buttons at front body
Long sleeve with tab
to adjust length
Hip length

Olive
Orange



Rhea
4ZTN560A

Washed silk/
viscose charmeuse
(25% silk/75% viscose)
Elastic at back & side
waist, tab with d-rings
at front
Patch pockets at hips
Pockets at back
Full length
(30.5" Inseam)

Olive
Orange



Rhea
4ZTN560A

Washed silk/
viscose charmeuse
(25% silk/75% viscose)
Elastic at back & side
waist, tab with d-rings
at front
Patch pockets at hips
Pockets at back
Full length
(30.5" Inseam)

Olive
Orange



Julieta
4ZTN660A

Washed silk/
viscose charmeuse
(25% silk/75% viscose)
Buttons at front body
Ruffle tier at hem
3/4 sleeve with ruffle tier
Tie belt at waist
Above the knee length
(35.5" HPS)

Olive
Orange



Julieta
4ZTN660A

Washed silk/
viscose charmeuse
(25% silk/75% viscose)
Buttons at front body
Ruffle tier at hem
3/4 sleeve with ruffle tier
Tie belt at waist
Above the knee length
(35.5" HPS)

Olive
Orange



Malaysia
4ZTN662A

Matte jersey
(96% polyester/
4% spandex)
Pleat at CF under placket
Pockets at hips
Dropped shoulder
Above the knee length
(35.5" HPS)
Deep hem added to
adjust length

4ZTN662B
(BEADED)

Hand beading
on neckline

Olive
Orange



**Malaysia
4ZTN662A**

Matte jersey
(96% polyester/
4% spandex)
Pleat at CF under placket
Pockets at hips
Dropped shoulder
Above the knee length
(35.5" HPS)
Deep hem added to
adjust length

4ZTN662B
(BEADED)

Hand beading
on neckline

**Olive
Orange**

**Henley
4ZTN664A**

Matte jersey
(96% polyester/
4% spandex)
Slim fit through waist
3/4 bell sleeve
A-line with swing fit
towards hem
Pockets at hips
Ankle length
(51" HPS)

**Olive
Orange**



**Henley
4ZTN664A**

Matte jersey
(96% polyester/
4% spandex)
Slim fit through waist
3/4 bell sleeve
A-line with swing fit
towards hem
Pockets at hips
Ankle length
(51" HPS)

**Olive
Orange**





Morning Glory





**Leslie
4ZYR270A**

Silk Cotton Voile
(30% silk/70% cotton)
Jersey cami lining
(95% viscose/
5% spandex)
Smocked neckline
Buttons at front body
Short sleeve
with smocked cuff

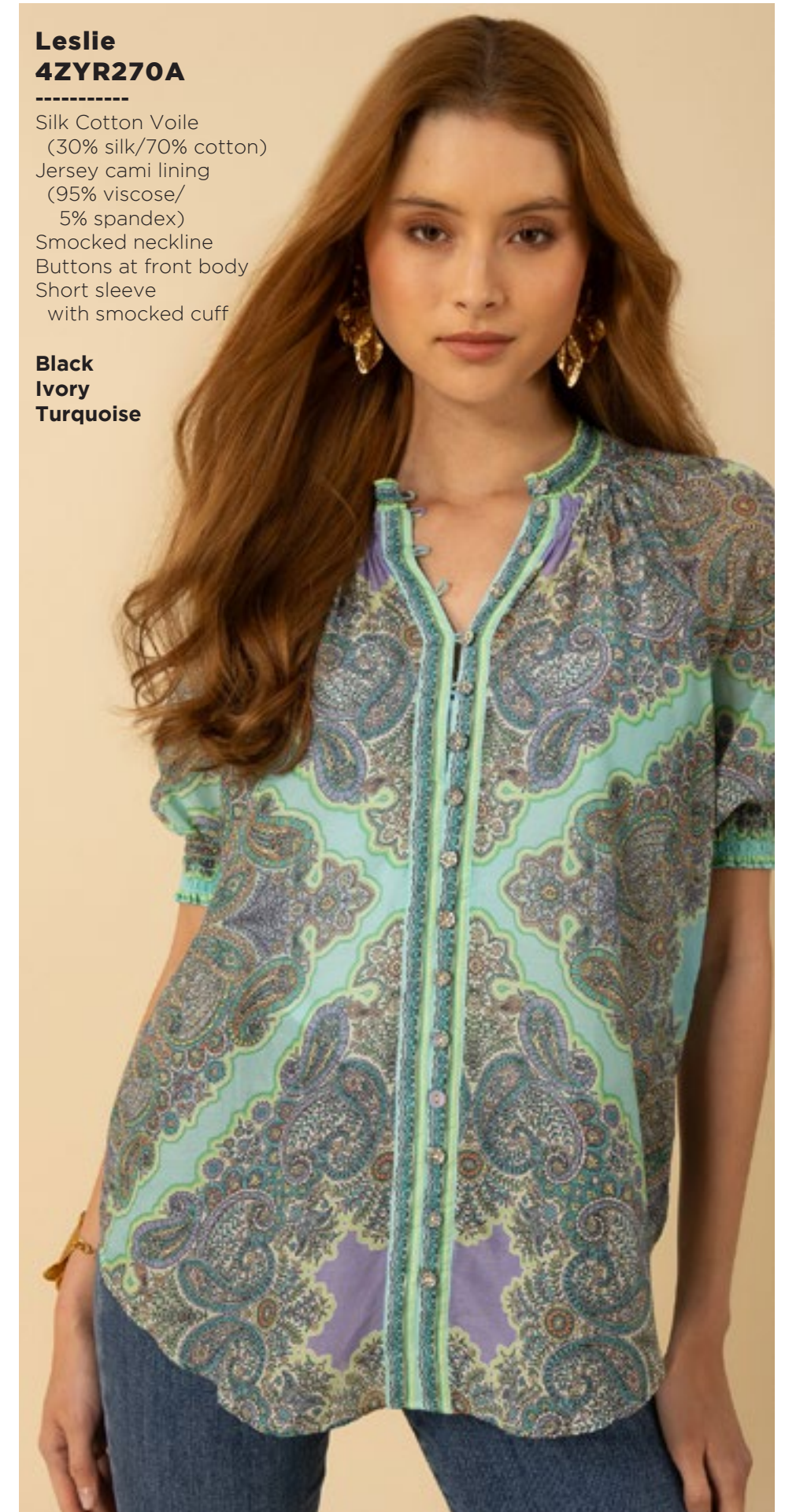
**Black
Ivory
Turquoise**



**Leslie
4ZYR270A**

Silk Cotton Voile
(30% silk/70% cotton)
Jersey cami lining
(95% viscose/
5% spandex)
Smocked neckline
Buttons at front body
Short sleeve
with smocked cuff

**Black
Ivory
Turquoise**



**Leslie
4ZYR270A**

Silk Cotton Voile
(30% silk/70% cotton)
Jersey cami lining
(95% viscose/
5% spandex)
Smocked neckline
Buttons at front body
Short sleeve
with smocked cuff

**Black
Ivory
Turquoise**



**Alejandra
4ZYR272A**

Matte jersey
(96% polyester/
4% spandex)
Slim, easy fit
3/4 sleeve with cuff
Hip length
with curved hem

**Black
Ivory
Turquoise**



**Alejandra
4ZYR272A**

Matte jersey
(96% polyester/
4% spandex)
Slim, easy fit
3/4 sleeve with cuff
Hip length
with curved hem

**Black
Ivory
Turquoise**



**Alejandra
4ZYR272A**

Matte jersey
(96% polyester/
4% spandex)
Slim, easy fit
3/4 sleeve with cuff
Hip length
with curved hem

**Black
Ivory
Turquoise**



**Charley
4ZYR570A**

Matte jersey
(96% polyester/
4% spandex)
Elastic at waist
High waist (9.25" rise)
Slim fit with flared leg
Full length
(31" inseam)

**Black
Ivory
Turquoise**



**Charley
4ZYR570A**

Matte jersey
(96% polyester/
4% spandex)
Elastic at waist
High waist (9.25" rise)
Slim fit with flared leg
Full length
(31" inseam)

**Black
Ivory
Turquoise**



**Charley
4ZYR570A**

Matte jersey
(96% polyester/
4% spandex)
Elastic at waist
High waist (9.25" rise)
Slim fit with flared leg
Full length
(31" inseam)

**Black
Ivory
Turquoise**



**Priscilla
4ZYR670A**

Washed linen
(100% linen)
Body is lined
(100% viscose)
Dropped shoulder
Snaps at front body
Flat waistband with
smocked insert at back
for comfort fit
Swing skirt
Midi length
(44" HPS)

**Black
Ivory
Turquoise**

**Priscilla
4ZYR670A**

Washed linen
(100% linen)
Body is lined
(100% viscose)
Dropped shoulder
Snaps at front body
Flat waistband with
smocked insert at back
for comfort fit
Swing skirt
Midi length
(44" HPS)

**Black
Ivory
Turquoise**



**Priscilla
4ZYR670A**

Washed linen
(100% linen)
Body is lined
(100% viscose)
Dropped shoulder
Snaps at front body
Flat waistband with
smocked insert at back
for comfort fit
Swing skirt
Midi length
(44" HPS)

**Black
Ivory
Turquoise**







**Zariyah
4ZYR672A**

Matte jersey
(96% polyester/
4% spandex)
Mesh lining
(92% nylon/8% spandex)
Slim fit through bodice
A-line skirt with pleat
at waist
3/4 sleeve with cuff
Above the knee length
(35.5" HPS)

**Black
Ivory
Turquoise**



**Zariyah
4ZYR672A**

Matte jersey
(96% polyester/
4% spandex)
Mesh lining
(92% nylon/8% spandex)
Slim fit through bodice
A-line skirt with pleat
at waist
3/4 sleeve with cuff
Above the knee length
(35.5" HPS)

**Black
Ivory
Turquoise**



**Zariyah
4ZYR672A**

Matte jersey
(96% polyester/
4% spandex)
Mesh lining
(92% nylon/8% spandex)
Slim fit through bodice
A-line skirt with pleat
at waist
3/4 sleeve with cuff
Above the knee length
(35.5" HPS)

**Black
Ivory
Turquoise**

Zariyah
4ZYR672D
Below the knee

Matte jersey
(96% polyester/
4% spandex)
Mesh lining
(92% nylon/8% spandex)
Slim fit through bodice
A-line skirt with pleat
at waist
3/4 sleeve with cuff
Below the knee length
(40" HPS)

Black
Ivory
Turquoise



Zariyah
4ZYR672D
Below the knee

Matte jersey
(96% polyester/
4% spandex)
Mesh lining
(92% nylon/8% spandex)
Slim fit through bodice
A-line skirt with pleat
at waist
3/4 sleeve with cuff
Below the knee length
(40" HPS)

Black
Ivory
Turquoise



Zariyah
4ZYR672D
Below the knee

Matte jersey
(96% polyester/
4% spandex)
Mesh lining
(92% nylon/8% spandex)
Slim fit through bodice
A-line skirt with pleat
at waist
3/4 sleeve with cuff
Below the knee length
(40" HPS)

Black
Ivory
Turquoise



**Emerie
4ZYR674A**

Washed chiffon
(70% rayon/30% silk)
Jersey lining
(95% viscose/
5% spandex)
Kimono sleeve
Buttons at front bodice
Elastic at waist
Pockets at hips
Voluminous swing skirt
Above the knee
(35.5" HPS)

**Black
Ivory
Turquoise**



**Emerie
4ZYR674A**

Washed chiffon
(70% rayon/30% silk)
Jersey lining
(95% viscose/
5% spandex)
Kimono sleeve
Buttons at front bodice
Elastic at waist
Pockets at hips
Voluminous swing skirt
Above the knee
(35.5" HPS)

**Black
Ivory
Turquoise**



**Emerie
4ZYR674A**

Washed chiffon
(70% rayon/30% silk)
Jersey lining
(95% viscose/
5% spandex)
Kimono sleeve
Buttons at front bodice
Elastic at waist
Pockets at hips
Voluminous swing skirt
Above the knee
(35.5" HPS)

**Black
Ivory
Turquoise**



**Emerie
4ZYR674M - MAXI**

Washed chiffon
(70% rayon/30% silk)
Jersey lining
(95% viscose/
5% spandex)
Kimono sleeve
Buttons at front bodice
Elastic at waist
Pockets at hips
Voluminous swing skirt
Maxi length
(57" HPS)

**Black
Ivory
Turquoise**



**Emerie
4ZYR674M - MAXI**

Washed chiffon
(70% rayon/30% silk)
Jersey lining
(95% viscose/
5% spandex)
Kimono sleeve
Buttons at front bodice
Elastic at waist
Pockets at hips
Voluminous swing skirt
Maxi length
(57" HPS)

**Black
Ivory
Turquoise**



**Emerie
4ZYR674M - MAXI**

Washed chiffon
(70% rayon/30% silk)
Jersey lining
(95% viscose/
5% spandex)
Kimono sleeve
Buttons at front bodice
Elastic at waist
Pockets at hips
Voluminous swing skirt
Maxi length
(57" HPS)

**Black
Ivory
Turquoise**



This book is a presentation of a selection of Hale Bob product and is correct at time of publication.

To view the entire collection of products including updates and additions. You can view product line sheets at halebob.com by logging into the "Merchant" section of our website.

Prices and products posted in this book are current at time of publication but are subject to change.

Sales Director
East Coast
South

Sales Executive
Latin America
West Coast

Sales Executive
Southwest
Midwest

Cathy Cooley
310-963-2463
cathy@halebob.com

Isabela Peralta
323-394-1739
isabela@halebob.com

Tracy Holden
214-454-1176
tracy@halebob.com

For Marketing & Press Inquiries:

Marianna Gunther
marianna@halebob.com

HALE BOB
LOS ANGELES

