

# HALE BOB

LOS ANGELES

Season 12







Charmed



**Eden**  
**3ZAR210A**

Washed crepe de chine  
(100% silk)  
Buttons at front body  
Voluminous long sleeve  
with cuff  
Low hip length  
with curved hem

**Beige**  
**Blue**  
**Pink**



**Eden**  
**3ZAR210A**

Washed crepe de chine  
(100% silk)  
Buttons at front body  
Voluminous long sleeve  
with cuff  
Low hip length  
with curved hem

**Beige**  
**Blue**  
**Pink**



**Eden**  
**3ZAR210A**

Washed crepe de chine  
(100% silk)  
Buttons at front body  
Voluminous long sleeve  
with cuff  
Low hip length  
with curved hem

**Beige**  
**Blue**  
**Pink**







**Remi  
3ZAR212A**

Matte jersey  
(96% polyester/  
4% spandex)  
Embroidered yoke  
Shirring under yoke  
at front body  
Long sleeve with cuff  
Hip length

**Beige  
Black  
Blue**



**Remi  
3ZAR212A**

Matte jersey  
(96% polyester/  
4% spandex)  
Embroidered yoke  
Shirring under yoke  
at front body  
Long sleeve with cuff  
Hip length

**Beige  
Black  
Blue**



**Remi  
3ZAR212A**

Matte jersey  
(96% polyester/  
4% spandex)  
Embroidered yoke  
Shirring under yoke  
at front body  
Long sleeve with cuff  
Hip length

**Beige  
Black  
Blue**





**Mackenzie  
3ZAR510A**

Matte jersey  
(96% polyester/  
4% spandex)  
Foldover waistband  
Slim fit leg  
with slight flare  
Full length  
(31" inseam)

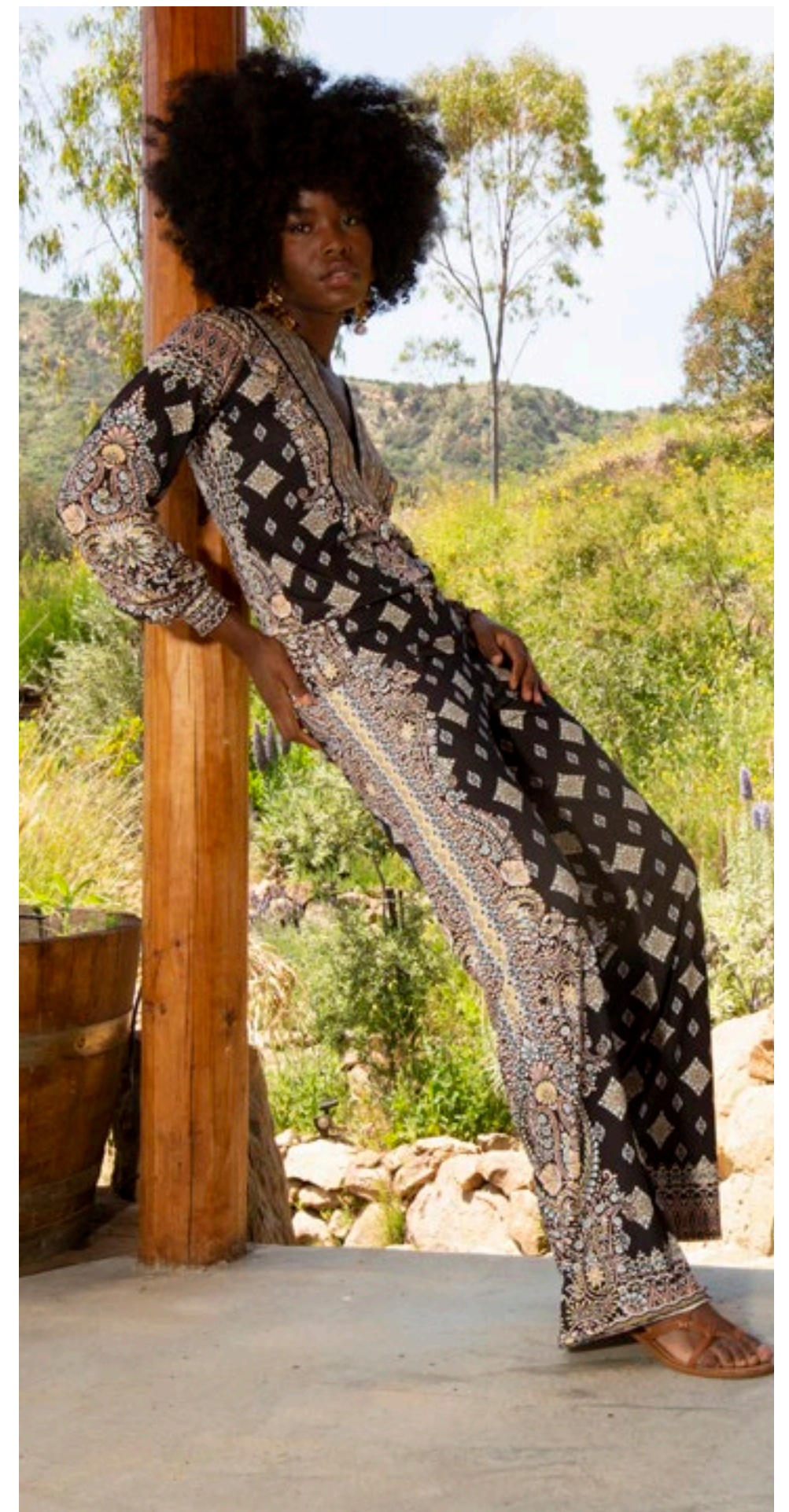
**Beige  
Black  
Blue**



**Mackenzie  
3ZAR510A**

Matte jersey  
(96% polyester/  
4% spandex)  
Foldover waistband  
Slim fit leg  
with slight flare  
Full length  
(31" inseam)

**Beige  
Black  
Blue**







**Mackenzie  
3ZAR510A**

Matte jersey  
(96% polyester/  
4% spandex)  
Foldover waistband  
Slim fit leg  
with slight flare  
Full length  
(31" inseam)

**Beige  
Black  
Blue**



**Maeve  
3ZAR610A**

Matte jersey  
(96% polyester/  
4% spandex)  
Pleat at CF under placket  
Pockets at hips  
Dropped shoulder  
Above the knee length  
(35.5" HPS)  
Deep hem added  
to adjust length

**3ZAR610B  
(BEADED)**

Hand beading  
on neckline

**Beige  
Black  
Blue  
Pink**



**Maeve  
3ZAR610A**

Matte jersey  
(96% polyester/  
4% spandex)  
Pleat at CF under placket  
Pockets at hips  
Dropped shoulder  
Above the knee length  
(35.5" HPS)  
Deep hem added  
to adjust length

**3ZAR610B  
(BEADED)**

Hand beading  
on neckline

**Beige  
Black  
Blue  
Pink**



**Maeve**  
**3ZAR610A**

Matte jersey  
(96% polyester/  
4% spandex)  
Pleat at CF under placket  
Pockets at hips  
Dropped shoulder  
Above the knee length  
(35.5" HPS)  
Deep hem added  
to adjust length

**3ZAR610B**  
(BEADED)

Hand beading  
on neckline

**Beige**  
**Black**  
**Blue**  
**Pink**



**Maeve**  
**3ZAR610A**

Matte jersey  
(96% polyester/  
4% spandex)  
Pleat at CF under placket  
Pockets at hips  
Dropped shoulder  
Above the knee length  
(35.5" HPS)  
Deep hem added  
to adjust length

**3ZAR610B**  
(BEADED)

Hand beading  
on neckline

**Beige**  
**Black**  
**Blue**  
**Pink**



**Reagan**  
**3ZAR612A**

Matte jersey  
(96% polyester/  
4% spandex)  
Mesh lining  
(95% nylon/8% spandex)  
Slim fit through bodice  
A-line skirt  
with pleat at waist  
3/4 balloon sleeve with cuff  
Below the knee length  
(41" HPS)

**Beige**  
**Black**  
**Blue**  
**Pink**







**Reagan  
3ZAR612A**

Matte jersey  
(96% polyester/  
4% spandex)  
Mesh lining  
(95% nylon/8% spandex)  
Slim fit through bodice  
A-line skirt  
with pleat at waist  
3/4 balloon sleeve with cuff  
Below the knee length  
(41" HPS)

**Beige  
Black  
Blue  
Pink**



**Reagan  
3ZAR612A**

Matte jersey  
(96% polyester/  
4% spandex)  
Mesh lining  
(95% nylon/8% spandex)  
Slim fit through bodice  
A-line skirt  
with pleat at waist  
3/4 balloon sleeve with cuff  
Below the knee length  
(41" HPS)

**Beige  
Black  
Blue  
Pink**



**Alaia  
3ZAR614A**

Washed chiffon  
(70% rayon/30% silk)  
Challis lining  
(100% Viscose)  
Long sleeve  
with smocked cuff  
Flat, slim fit waist  
with smocked panel at  
back bodice for comfort  
Center back zipper  
Pockets at hips  
Tier at lower skirt  
Above the knee  
(35.5" HPS)

**Beige  
Blue  
Pink**



**Alaia**  
**3ZAR614A**

Washed chiffon  
(70% rayon/30% silk)  
Challis lining  
(100% Viscose)  
Long sleeve  
with smocked cuff  
Flat, slim fit waist  
with smocked panel at  
back bodice for comfort  
Center back zipper  
Pockets at hips  
Tier at lower skirt  
Above the knee  
(35.5" HPS)

**Beige**  
**Blue**  
**Pink**



**Alaia**  
**3ZAR614A**

Washed chiffon  
(70% rayon/  
30% silk)  
Challis lining  
(100% Viscose)  
Long sleeve  
with smocked cuff  
Flat, slim fit waist  
with smocked panel  
at back bodice  
for comfort  
Center back zipper  
Pockets at hips  
Tier at lower skirt  
Above the knee  
(35.5" HPS)

**Beige**  
**Blue**  
**Pink**

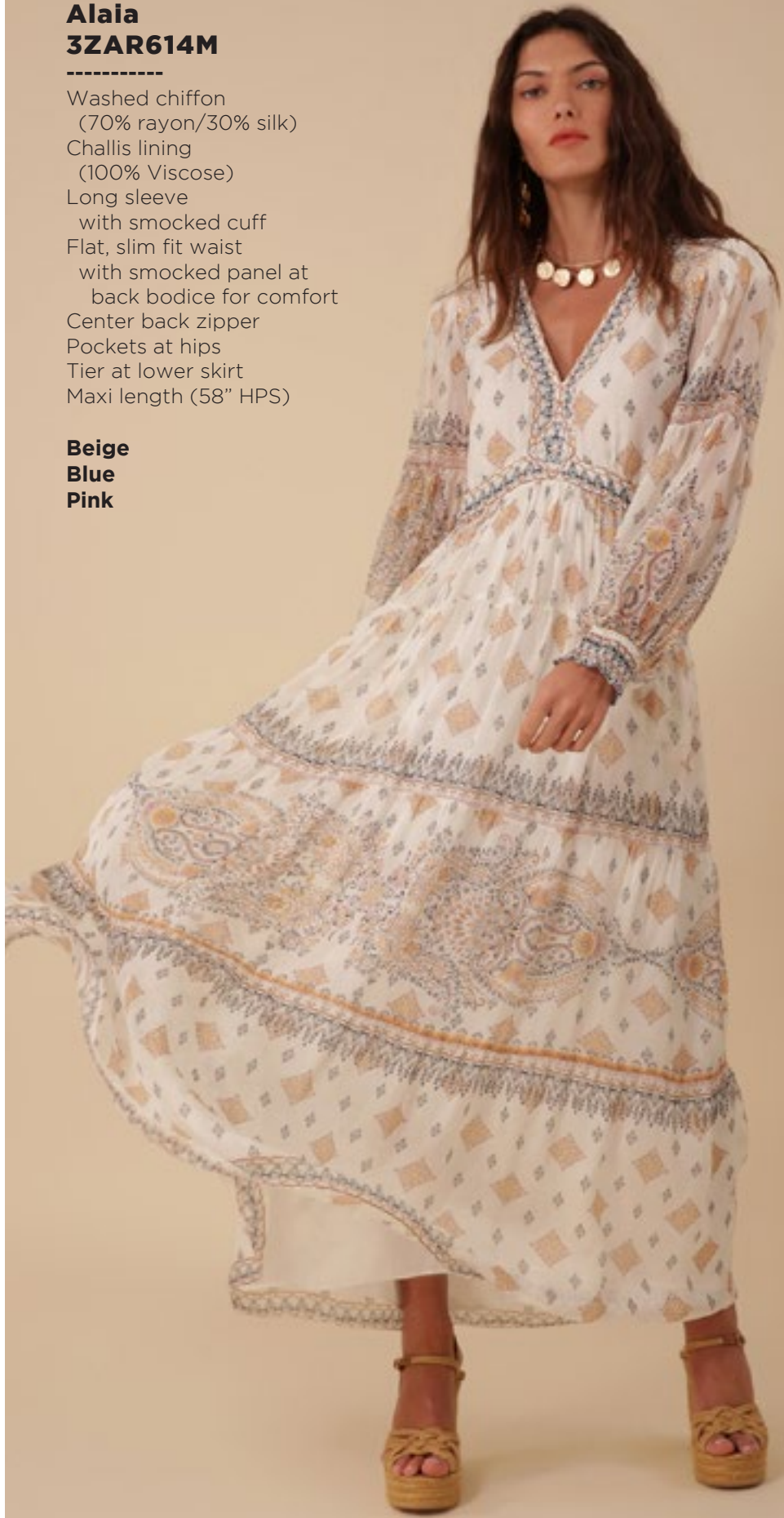




**Alaia  
3ZAR614M**

Washed chiffon  
(70% rayon/30% silk)  
Challis lining  
(100% Viscose)  
Long sleeve  
with smocked cuff  
Flat, slim fit waist  
with smocked panel at  
back bodice for comfort  
Center back zipper  
Pockets at hips  
Tier at lower skirt  
Maxi length (58" HPS)

**Beige  
Blue  
Pink**



**Alaia  
3ZAR614M**

Washed chiffon  
(70% rayon/30% silk)  
Challis lining  
(100% Viscose)  
Long sleeve  
with smocked cuff  
Flat, slim fit waist  
with smocked panel at  
back bodice for comfort  
Center back zipper  
Pockets at hips  
Tier at lower skirt  
Maxi length (58" HPS)

**Beige  
Blue  
Pink**



**Alaia  
3ZAR614M**

Washed chiffon  
(70% rayon/30% silk)  
Challis lining  
(100% Viscose)  
Long sleeve  
with smocked cuff  
Flat, slim fit waist  
with smocked panel at  
back bodice for comfort  
Center back zipper  
Pockets at hips  
Tier at lower skirt  
Maxi length (58" HPS)

**Beige  
Blue  
Pink**











Joyride



**Margaret  
3ZDJ220A**

Washed Georgette  
(100% Viscose)  
Jersey cami lining  
(95% viscose/  
5% spandex)  
Buttons at front body  
Ruffle at body/sleeve

**Pink  
Turquoise**



**Margaret  
3ZDJ220A**

Washed Georgette  
(100% Viscose)  
Jersey cami lining  
(95% viscose/  
5% spandex)  
Buttons at front body  
Ruffle at body/sleeve

**Pink  
Turquoise**



**Josie  
3ZDJ222A**

Crepe de chine  
(100% Silk)  
Swingy easy fit  
through body  
Voluminous balloon sleeve  
with cuff  
Hip length  
with curved hem

**Pink  
Turquoise**





**Josie**  
**3ZDJ222A**

-----  
Crepe de chine  
(100% Silk)  
Swingy easy fit  
through body  
Voluminous balloon sleeve  
with cuff  
Hip length  
with curved hem

**Pink**  
**Turquoise**



**Josie**  
**3ZDJ222S**

-----  
Washed Georgette  
(100% Viscose)  
with challis lining  
(viscose)  
Swingy easy fit  
through body  
Voluminous balloon  
sleeve with cuff  
Hip length  
with curved hem

**Pink**  
**Turquoise**



**Josie**  
**3ZDJ222S**

-----  
Washed Georgette  
(100% Viscose)  
with challis lining  
(viscose)  
Swingy easy fit  
through body  
Voluminous balloon  
sleeve with cuff  
Hip length  
with curved hem

**Pink**  
**Turquoise**





**Elliana**  
**3ZDJ620A**

Matte jersey  
(90% polyester/  
10%spandex)  
Pockets at hips  
7/8 length bell sleeve  
Easy a-line body  
Above the knee length  
(35.5" HPS)

**Pink**  
**Turquoise**



**Elliana**  
**3ZDJ620A**

Matte jersey  
(90% polyester/  
10%spandex)  
Pockets at hips  
7/8 length bell sleeve  
Easy a-line body  
Above the knee length  
(35.5" HPS)

**Pink**  
**Turquoise**



**Mary**  
**3ZDJ622A**

Washed linen  
(100% linen)  
Body is lined  
(100% viscose)  
Trim at neck & hem  
Balloon sleeve  
with elastic ends  
above elbow  
Pockets at hips  
Ruffle tier at hem  
Self covered belt included  
Midi length (46" HPS)

**Pink**  
**Turquoise**







**Mary  
3ZDJ622A**

-----  
Washed linen  
(100% linen)  
Body is lined  
(100% viscose)  
Trim at neck & hem  
Balloon sleeve  
with elastic ends  
above elbow  
Pockets at hips  
Ruffle tier at hem  
Self covered belt included  
Midi length (46" HPS)

**Pink  
Turquoise**



**Daisy  
3ZDJ624A**

-----  
Crepe de chine  
(100% viscose)  
Body is lined  
(100% viscose)  
Ruffle at front neck  
Balloon sleeve  
with smocking  
Voluminous gusset skirt  
Invisible zip at back  
Smocked panel  
at back bodice for  
comfortable slim fit  
Maxi length (59" HPS)

**Pink  
Turquoise**



**Daisy  
3ZDJ624A**

-----  
Crepe de chine  
(100% viscose)  
Body is lined  
(100% viscose)  
Ruffle at front neck  
Balloon sleeve  
with smocking  
Voluminous gusset skirt  
Invisible zip at back  
Smocked panel  
at back bodice for  
comfortable slim fit  
Maxi length (59" HPS)

**Pink  
Turquoise**









Limited  
Edition  
Denim



**Blake**  
**ODEN510A**

-----  
Made in the USA  
Cotton stretch denim  
High waisted fit  
(12 3/8" rise including  
waistband)  
Wide leg with flare  
Stitched pin tuck  
Side pockets at front  
Patch pockets at back  
Shipped with 33" inseam  
Deep hem to adjust length

**Black**  
**Light blue wash**  
**Dark blue wash**  
**White**



**Blake**  
**ODEN510A**

-----  
Made in the USA  
Cotton stretch denim  
High waisted fit  
(12 3/8" rise including  
waistband)  
Wide leg with flare  
Stitched pin tuck  
Side pockets at front  
Patch pockets at back  
Shipped with 33" inseam  
Deep hem to adjust length

**Black**  
**Light blue wash**  
**Dark blue wash**  
**White**







**Blake**  
**ODEN510A**

-----  
Made in the USA  
Cotton stretch denim  
High waisted fit  
(12 3/8" rise including  
waistband)  
Wide leg with flare  
Stitched pin tuck  
Side pockets at front  
Patch pockets at back  
Shipped with 33" inseam  
Deep hem to adjust length

**Black**  
**Light blue wash**  
**Dark blue wash**  
**White**





**Blake**  
**ODEN510A**

-----  
Made in the USA  
Cotton stretch denim  
High waisted fit  
(12 3/8" rise including  
waistband)  
Wide leg with flare  
Stitched pin tuck  
Side pockets at front  
Patch pockets at back  
Shipped with 33" inseam  
Deep hem to adjust length

**Black**  
**Light blue wash**  
**Dark blue wash**  
**White**





Dream Life





**Alina**  
**3ZFL230A**

-----  
Washed crepe de chine  
(100% silk)  
Buttons at top neckline  
Shirring at front shoulder  
under yoke  
Long sleeve with cuff  
Low hip length  
with curved hem

**Blue**  
**Orange**



**Alina**  
**3ZFL230A**

-----  
Washed crepe de chine  
(100% silk)  
Buttons at top neckline  
Shirring at front shoulder  
under yoke  
Long sleeve with cuff  
Low hip length  
with curved hem

**Blue**  
**Orange**



**Lucia**  
**3ZFL232A**

-----  
Washed chiffon  
(70% rayon/30% silk)  
Challis lining  
(100% Viscose)  
Smocking at front yoke  
Ruffle neck  
with ties at front  
Long sleeve  
with smocked cuff  
Low hip length  
with curved hem

**Blue**  
**Orange**





**Lucia**  
**3ZFL232A**

Washed chiffon  
(70% rayon/30% silk)  
Challis lining  
(100% Viscose)  
Smocking at front yoke  
Ruffle neck  
with ties at front  
Long sleeve  
with smocked cuff  
Low hip length  
with curved hem

**Blue**  
**Orange**



**Lucia**  
**3ZFL232S**

Washed chiffon  
(70% rayon/30% silk)  
Challis lining  
(100% Viscose)  
Smocking at front yoke  
Ruffle neck  
with ties at front  
Long sleeve  
with smocked cuff  
Low hip length  
with curved hem

**Fuchsia**  
**Turquoise**  
**White**

**Lucia**  
**3ZFL232S**

Washed chiffon  
(70% rayon/30% silk)  
Challis lining  
(100% Viscose)  
Smocking at front yoke  
Ruffle neck  
with ties at front  
Long sleeve  
with smocked cuff  
Low hip length  
with curved hem

**Fuchsia**  
**Turquoise**  
**White**







**Lucia**  
**3ZF232S**

Washed chiffon  
(70% rayon/30% silk)  
Challis lining  
(100% Viscose)  
Smocking at front yoke  
Ruffle neck  
with ties at front  
Long sleeve  
with smocked cuff  
Low hip length  
with curved hem

**Fuchsia**  
**Turquoise**  
**White**



**Ximena**  
**3ZF234A**

Matte jersey  
(96% polyester/  
4% spandex)  
Pleat under placket  
at front  
3/4 length balloon sleeve  
with cuff  
Slim, easy fit body  
Hip length  
with curved hem

**Blue**  
**Orange**



**Ximena**  
**3ZF234A**

Matte jersey  
(96% polyester/  
4% spandex)  
Pleat under placket  
at front  
3/4 length balloon sleeve  
with cuff  
Slim, easy fit body  
Hip length  
with curved hem

**Blue**  
**Orange**





**Juniper  
3ZFL630A**  
-----

Matte jersey  
(96% polyester/  
4% spandex)  
Mesh lining  
(95% nylon/8% spandex)  
Pleat at front under placket  
Pockets at hips  
3/4 length bell sleeve  
Deep hem added for length  
Above the knee  
(35.5" HPS)

**3ZFL630B  
(BEADED)**  
-----

Hand beading  
on neckline

**Blue  
Orange**



**Juniper  
3ZFL630A**  
-----

Matte jersey  
(96% polyester/  
4% spandex)  
Mesh lining  
(95% nylon/8% spandex)  
Pleat at front under placket  
Pockets at hips  
3/4 length bell sleeve  
Deep hem added for length  
Above the knee  
(35.5" HPS)

**3ZFL630B  
(BEADED)**  
-----

Hand beading  
on neckline

**Blue  
Orange**



**Kaylee  
3ZFL632A**  
-----

Washed charmeuse  
(54%rayon/46%viscose)  
Flower button detail  
at front body are function  
at very top & bottom  
Kimono sleeve  
Pockets at hips  
Voluminous tier at skirt  
Midi length (47" HPS)

**Blue  
Orange**

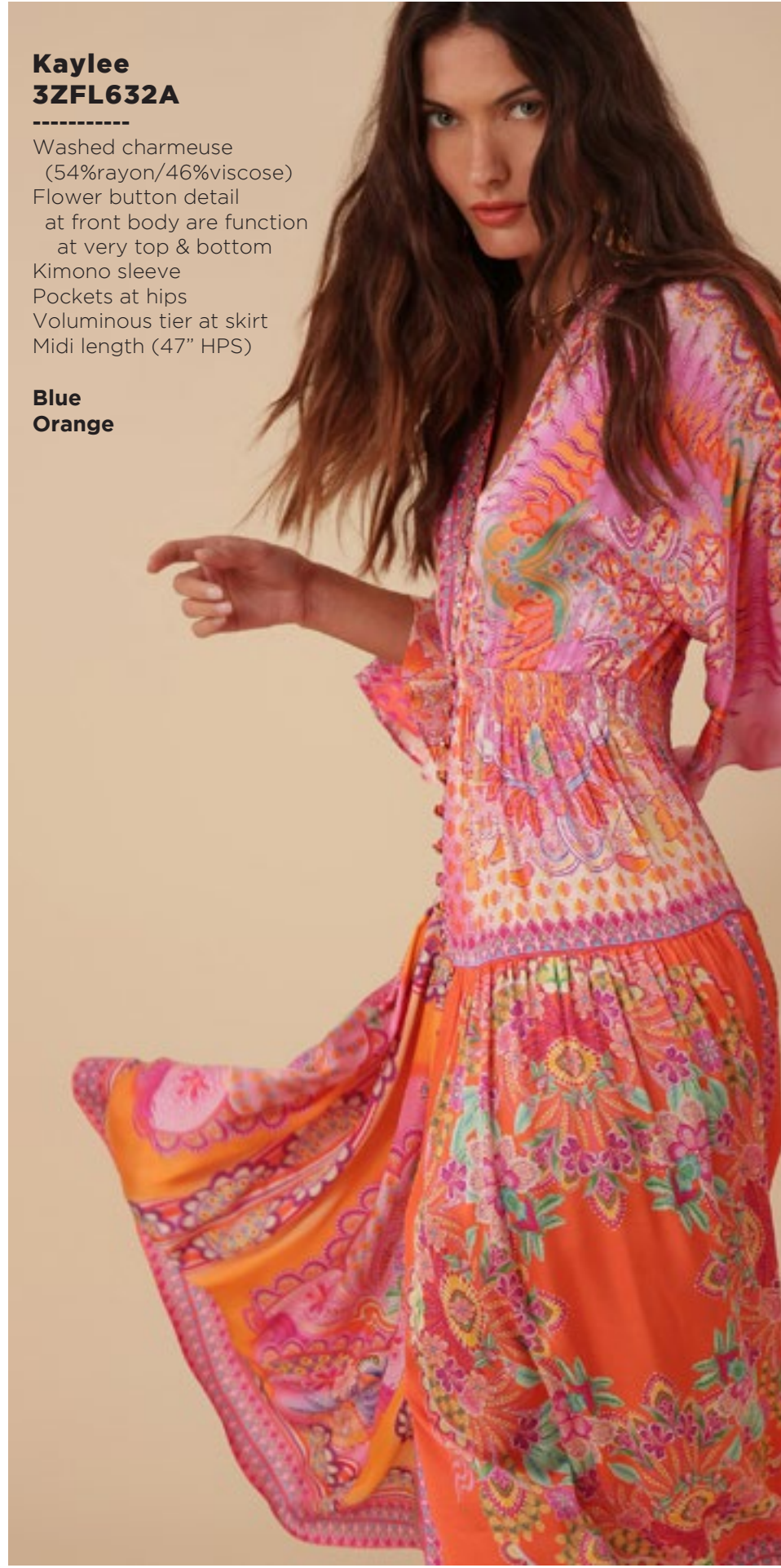




**Kaylee  
3ZFL632A**

-----  
 Washed charmeuse  
 (54%rayon/46%viscose)  
 Flower button detail  
 at front body are function  
 at very top & bottom  
 Kimono sleeve  
 Pockets at hips  
 Voluminous tier at skirt  
 Midi length (47" HPS)

**Blue  
Orange**



**Magnolia  
3ZFL634A**

-----  
 Washed chiffon  
 (70% rayon/30% silk)  
 Challis lining  
 (100% Viscose)  
 Round halter front neckline  
 with keyhole & buttons  
 at back  
 Smocked waistband  
 Pocket at hips  
 Maxi length (58" HPS)

**Blue  
Orange**



**Magnolia  
3ZFL634A**

-----  
Washed chiffon  
(70% rayon/30% silk)  
Challis lining  
(100% Viscose)  
Round halter front neckline  
with keyhole & buttons  
at back  
Smocked waistband  
Pocket at hips  
Maxi length (58" HPS)

**Blue  
Orange**



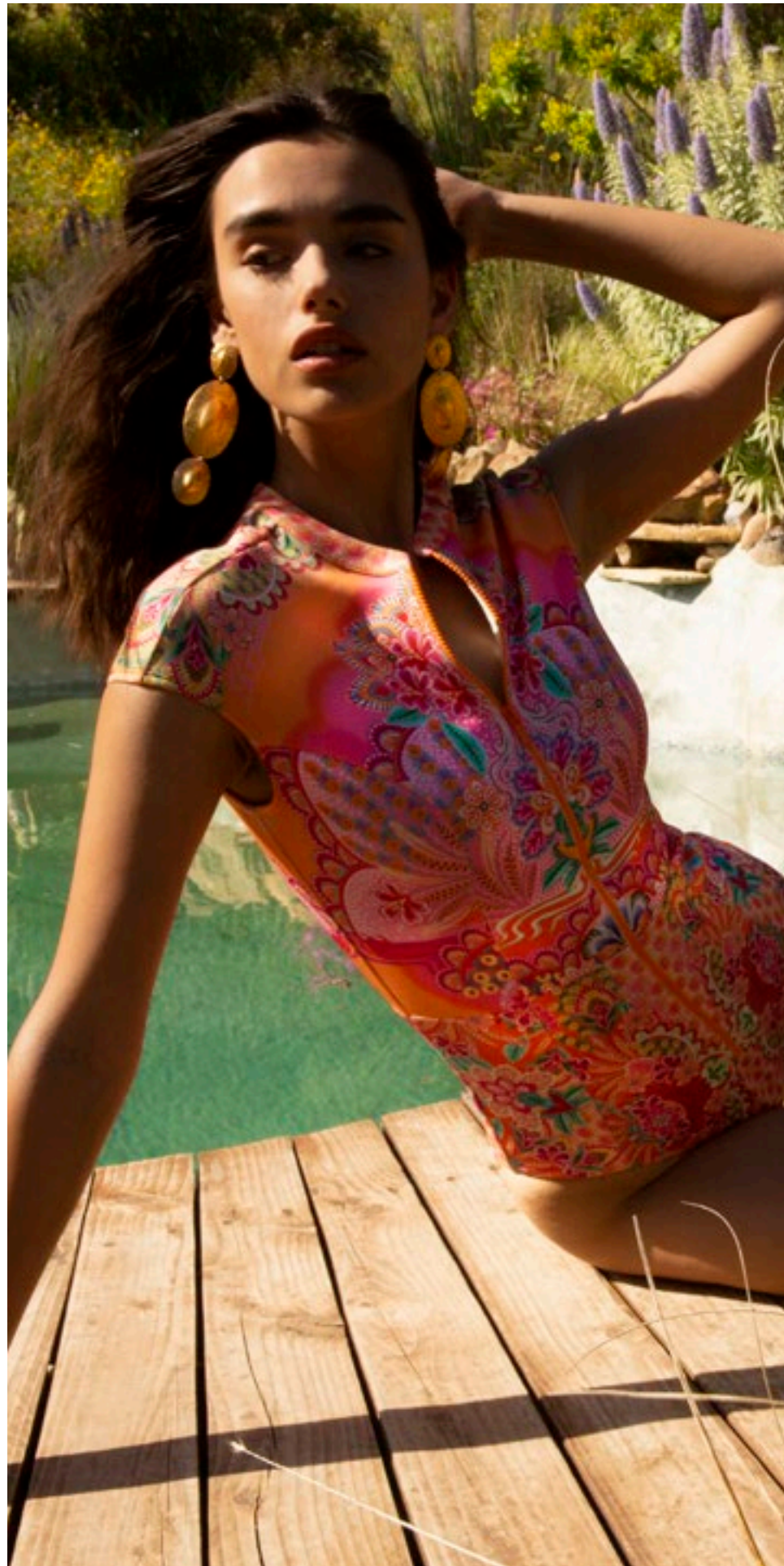
**Summer  
3ZFL636A**

-----  
Washed charmeuse  
(54%rayon/46%viscose)  
Boatneck oversized caftan  
Slits at sides  
Pockets at hips  
Maxi length (57" HPS)

**Blue  
Orange**



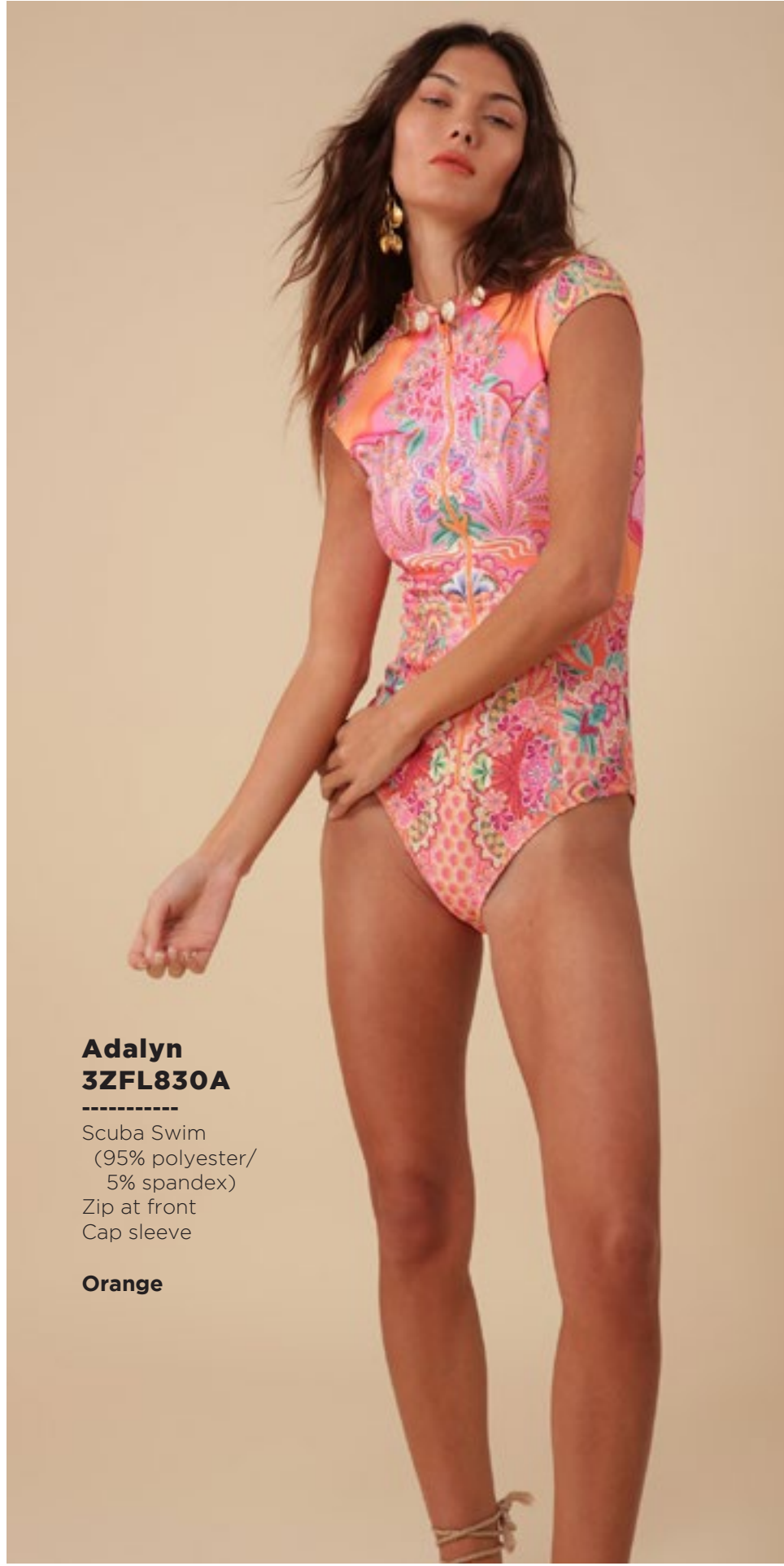




**Summer**  
**3ZFL636A**

-----  
Washed charmeuse  
(54%rayon/46%viscose)  
Boatneck oversized caftan  
Slits at sides  
Pockets at hips  
Maxi length (57" HPS)

**Blue**  
**Orange**



**Adalyn**  
**3ZFL830A**

-----  
Scuba Swim  
(95% polyester/  
5% spandex)  
Zip at front  
Cap sleeve

**Orange**





Short  
Stories



**Sloane**  
**3ZHS240A**

-----  
Embroidered crinkle gauze  
(100% rayon)  
Challis lining at body  
(100% viscose)  
Ruffle at neckline,  
trim at armhole  
Buttons at front keyhole  
Long sleeve  
with elastic & ruffle

**Beige**  
**Black**  
**Blue**



**Sloane**  
**3ZHS240A**

-----  
Embroidered crinkle gauze  
(100% rayon)  
Challis lining at body  
(100% viscose)  
Ruffle at neckline,  
trim at armhole  
Buttons at front keyhole  
Long sleeve  
with elastic & ruffle

**Beige**  
**Black**  
**Blue**



**Sloane**  
**3ZHS240A**

-----  
Embroidered crinkle gauze  
(100% rayon)  
Challis lining at body  
(100% viscose)  
Ruffle at neckline,  
trim at armhole  
Buttons at front keyhole  
Long sleeve  
with elastic & ruffle

**Beige**  
**Black**  
**Blue**





**Amara**  
**3ZHS640A**

Embroidered crinkle gauze  
(100% rayon)  
Challis lining at body  
(100% viscose)  
Trim detailing  
throughout body  
Tie at center bust  
Tiered, voluminous skirt  
Pockets at hips  
Midi length (45" HPS)

**Beige**  
**Black**  
**Blue**

\*Note: the sample is  
hanging low at the back,  
this will be fixed  
in production.



**Amara**  
**3ZHS640A**

Embroidered crinkle gauze  
(100% rayon)  
Challis lining at body  
(100% viscose)  
Trim detailing  
throughout body  
Tie at center bust  
Tiered, voluminous skirt  
Pockets at hips  
Midi length (45" HPS)

**Beige**  
**Black**  
**Blue**

\*Note: the sample is  
hanging low at the back,  
this will be fixed  
in production.





**Isabel**  
**3ZHS642A**

Embroidered crinkle gauze  
(100% rayon)  
Challis lining at body  
(100% viscose)  
Trim detailing  
throughout body  
Easy fit, slim  
through rib cage  
Tiered, swingy fit at skirt  
3/4 sleeve with ruffle tier  
Above the knee  
(35.5" HPS)

**Beige**  
**Black**  
**Blue**

\*Note: the sample is  
hanging low at the back,  
this will be fixed in  
production.



**Isabel**  
**3ZHS642A**

Embroidered crinkle gauze  
(100% rayon)  
Challis lining at body  
(100% viscose)  
Trim detailing  
throughout body  
Easy fit, slim  
through rib cage  
Tiered, swingy fit at skirt  
3/4 sleeve with ruffle tier  
Above the knee  
(35.5" HPS)

**Beige**  
**Black**  
**Blue**

\*Note: the sample is  
hanging low at the back,  
this will be fixed in  
production.



**Isabel**  
**3ZHS642A**

Embroidered crinkle gauze  
(100% rayon)  
Challis lining at body  
(100% viscose)  
Trim detailing  
throughout body  
Easy fit, slim  
through rib cage  
Tiered, swingy fit at skirt  
3/4 sleeve with ruffle tier  
Above the knee  
(35.5" HPS)

**Beige**  
**Black**  
**Blue**

\*Note: the sample is  
hanging low at the back,  
this will be fixed in  
production.







**Isabel**  
**3ZHS642A**

Embroidered crinkle gauze  
(100% rayon)  
Challis lining at body  
(100% viscose)  
Trim detailing  
throughout body  
Easy fit, slim  
through rib cage  
Tiered, swingy fit at skirt  
3/4 sleeve with ruffle tier  
Maxi length (58" HPS)

**Beige**  
**Black**  
**Blue**

\*Note: the sample is  
hanging low at the back,  
this will be fixed in  
production.



**Isabel**  
**3ZHS642A**

Embroidered crinkle gauze  
(100% rayon)  
Challis lining at body  
(100% viscose)  
Trim detailing  
throughout body  
Easy fit, slim  
through rib cage  
Tiered, swingy fit at skirt  
3/4 sleeve with ruffle tier  
Maxi length (58" HPS)

**Beige**  
**Black**  
**Blue**

\*Note: the sample is  
hanging low at the back,  
this will be fixed in  
production.



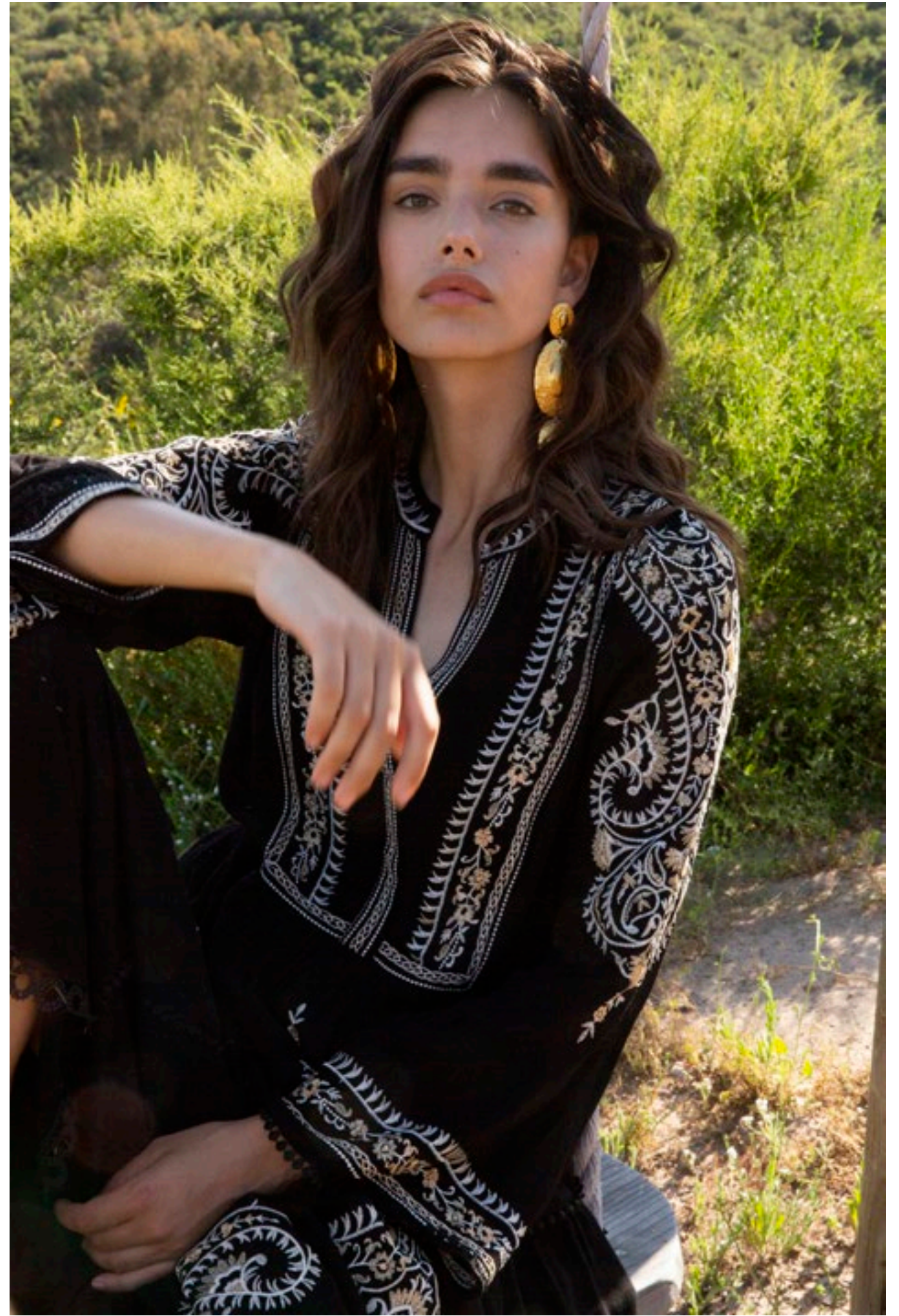
**Isabel**  
**3ZHS642A**

Embroidered crinkle gauze  
(100% rayon)  
Challis lining at body  
(100% viscose)  
Trim detailing  
throughout body  
Easy fit, slim  
through rib cage  
Tiered, swingy fit at skirt  
3/4 sleeve with ruffle tier  
Maxi length (58" HPS)

**Beige**  
**Black**  
**Blue**

\*Note: the sample is  
hanging low at the back,  
this will be fixed in  
production.









In  
Full  
Bloom



**Arianna  
3ZLB250A**

Washed Voile  
(30% silk/70% cotton)  
Jersey cami lining  
(95% viscose/5% spandex)  
Ruffle & tie at neckline,  
deep keyhole with buttons  
Long sleeve  
with elastic wrist,  
with eyelet trim ruffle

**Blue  
Pink**



**Arianna  
3ZLB250A**

Washed Voile  
(30% silk/70% cotton)  
Jersey cami lining  
(95% viscose/5% spandex)  
Ruffle & tie at neckline,  
deep keyhole with buttons  
Long sleeve  
with elastic wrist,  
with eyelet trim ruffle

**Blue  
Pink**



**Arianna  
3ZLB250S**

Eyelet  
(100% cotton)  
Jersey cami lining  
(95% viscose/5% spandex)  
Ruffle & tie at neckline,  
deep keyhole with buttons  
Long sleeve  
with elastic wrist,  
with eyelet trim ruffle

**Blue  
Pink**







**Arianna  
3ZLB250S**

Eyelet  
(100% cotton)  
Jersey cami lining  
(95% viscose/5% spandex)  
Ruffle & tie at neckline,  
deep keyhole with buttons  
Long sleeve  
with elastic wrist,  
with eyelet trim ruffle

**Blue  
Pink**



**Reese  
3ZLB252A**

Lightweight washed linen  
(100% linen)  
Sheer crochet insert  
at voluminous sleeve  
Hip length  
with curved hem

**Blue  
Pink**

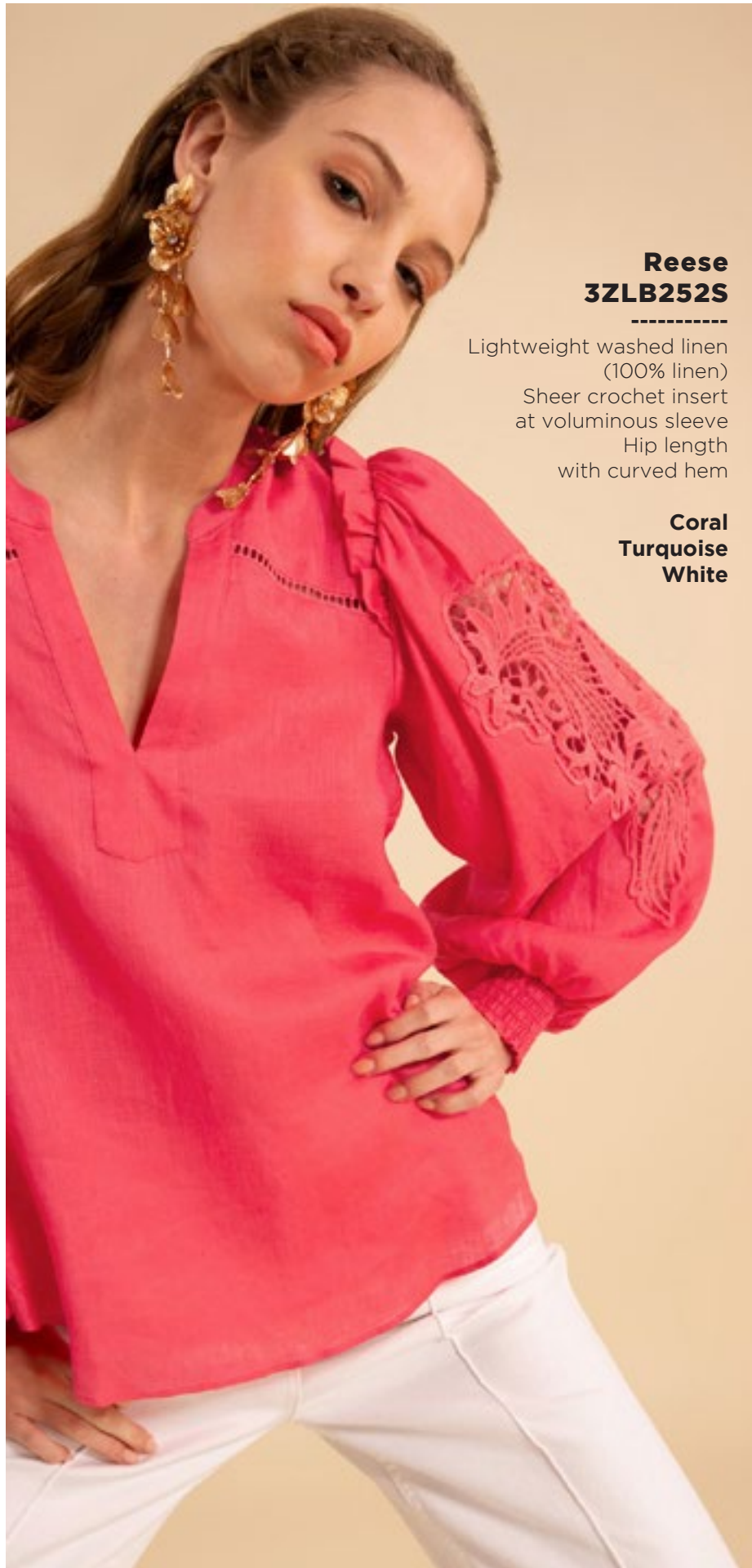


**Reese  
3ZLB252A**

Lightweight washed linen  
(100% linen)  
Sheer crochet insert  
at voluminous sleeve  
Hip length  
with curved hem

**Blue  
Pink**





**Reese  
3ZLB252S**

Lightweight washed linen  
(100% linen)  
Sheer crochet insert  
at voluminous sleeve  
Hip length  
with curved hem

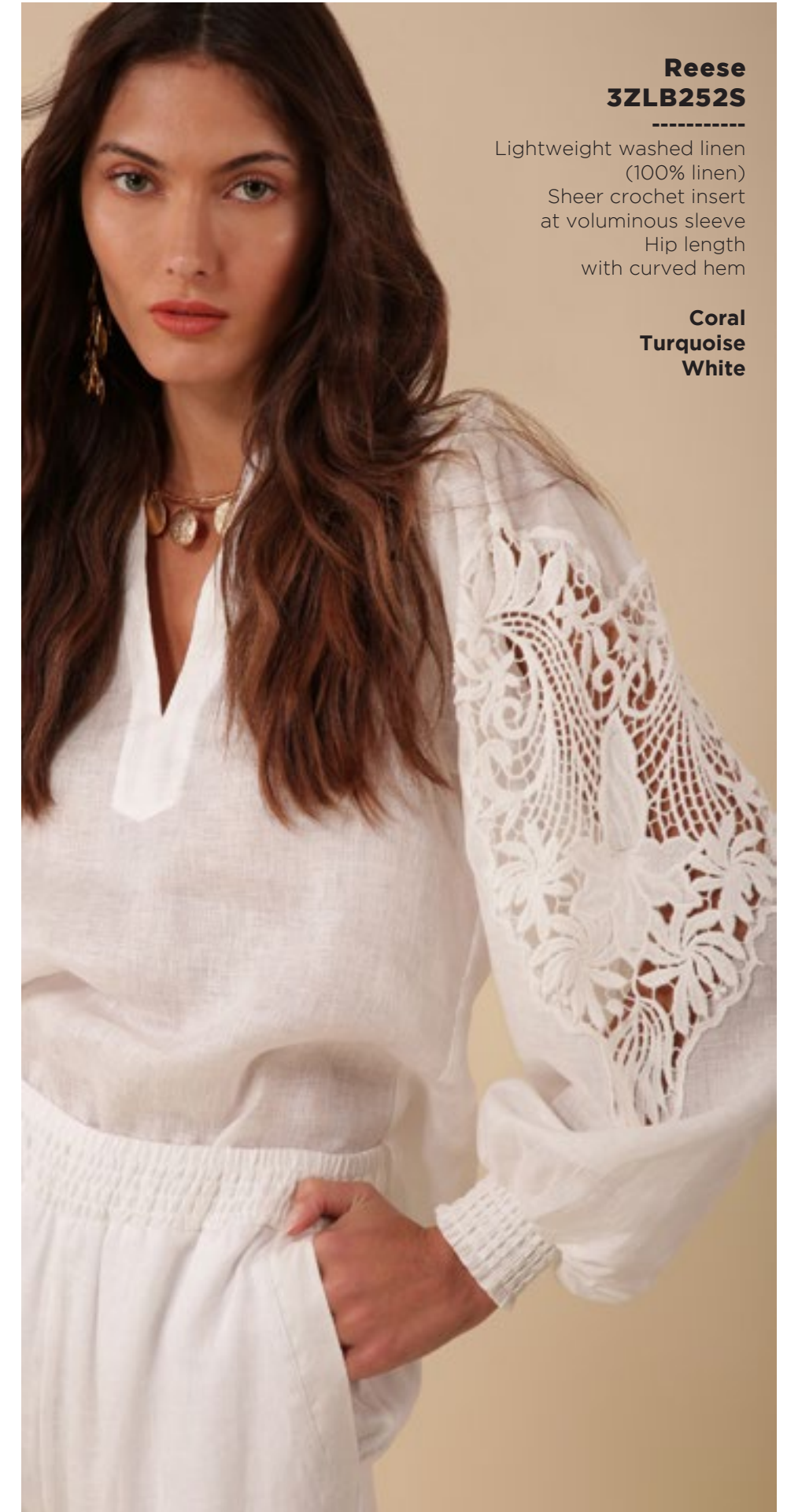
**Coral  
Turquoise  
White**



**Reese  
3ZLB252S**

Lightweight washed linen  
(100% linen)  
Sheer crochet insert  
at voluminous sleeve  
Hip length  
with curved hem

**Coral  
Turquoise  
White**



**Reese  
3ZLB252S**

Lightweight washed linen  
(100% linen)  
Sheer crochet insert  
at voluminous sleeve  
Hip length  
with curved hem

**Coral  
Turquoise  
White**





**Emersyn  
3ZLB550A**

Lightweight washed linen  
(100% linen)  
Fully lined  
(100% viscose)  
Smocked waist  
Full easy fit straight leg  
Pockets at hips  
31" Inseam

**Blue  
Pink**



**Emersyn  
3ZLB550A**

Lightweight washed linen  
(100% linen)  
Fully lined  
(100% viscose)  
Smocked waist  
Full easy fit straight leg  
Pockets at hips  
31" Inseam

**Blue  
Pink**



**Emersyn  
3ZLB550S**

Lightweight washed linen  
(100% linen)  
Fully lined  
(100% viscose)  
Smocked waist  
Full easy fit straight leg  
Pockets at hips  
31" Inseam

**Beige  
White**





**Emersyn  
3ZLB550S**

Lightweight washed linen  
(100% linen)  
Fully lined  
(100% viscose)  
Smocked waist  
Full easy fit straight leg  
Pockets at hips  
31" Inseam

**Beige  
White**



**Kehlani  
3ZLB650A**

Georgette  
(100% viscose)  
Body is lined  
(100% viscose)  
Wrap dress ties  
at the side waist  
Voluminous long sleeve  
with smocked cuff  
Swingy skirt  
Mid- thigh length  
(34.5" HPS)

**Blue  
Pink**



**Kehlani  
3ZLB650A**

Georgette  
(100% viscose)  
Body is lined  
(100% viscose)  
Wrap dress ties  
at the side waist  
Voluminous long sleeve  
with smocked cuff  
Swingy skirt  
Mid- thigh length  
(34.5" HPS)

**Blue  
Pink**



**Kehlani  
3ZLB650S**

Eyelet  
(100% cotton)  
Body is lined  
(100% viscose)  
Wrap dress ties  
at the side waist  
Voluminous long sleeve  
with smocked cuff  
Swingy skirt  
Mid- thigh length  
(34.5" HPS)

**Blue  
Pink**



**Kehlani  
3ZLB650S**

Eyelet  
(100% cotton)  
Body is lined  
(100% viscose)  
Wrap dress ties  
at the side waist  
Voluminous long sleeve  
with smocked cuff  
Swingy skirt  
Mid- thigh length  
(34.5" HPS)

**Blue  
Pink**



**Valerie  
3ZLB652A**

Lightweight washed linen  
(100% linen)  
Body is lined  
(100% viscose)  
Wrap dress ties  
at the side waist  
Voluminous long sleeve  
with smocked cuff  
Swingy skirt  
Ankle Length  
(52" HPS)

**Blue  
Pink**

**3ZLB651A**

Above the knee  
(35.5" HPS)







**Valerie  
3ZLB652A**  
-----

Lightweight washed linen  
(100% linen)  
Body is lined  
(100% viscose)  
Wrap dress ties  
at the side waist  
Voluminous long sleeve  
with smocked cuff  
Swingy skirt  
Ankle Length  
(52" HPS)

**Blue  
Pink**

**3ZLB651A**  
-----

Above the knee  
(35.5" HPS)



**Valerie  
3ZLB652S**  
-----

Eyelet  
(100% cotton)  
Body is lined  
(100% viscose)  
Wrap dress ties  
at the side waist  
Voluminous long sleeve  
with smocked cuff  
Swingy skirt  
Ankle Length  
(52" HPS)

**Blue  
Pink**



**Valerie  
3ZLB652S**  
-----

Eyelet  
(100% cotton)  
Body is lined  
(100% viscose)  
Wrap dress ties  
at the side waist  
Voluminous long sleeve  
with smocked cuff  
Swingy skirt  
Ankle Length  
(52" HPS)

**Blue  
Pink**





**Freya**  
**3ZLB654A**

-----  
Chiffon  
(100% polyester)  
Smocked and ruffle  
at neck  
Flutter sleeve  
Tiered voluminous skirt  
with slit at lower tiers  
Ankle length  
with slight hi/low  
(49" HPS at front,  
52" at back)

**Blue**  
**Pink**









# Whirling Water





**River**  
**3ZWT260A**

Jersey  
(95% viscose/  
5% spandex)  
3/4 sleeve  
with shirring at sides  
Easy slim silhouette  
Hip length  
with curved hem

**Blue**  
**Ivory**



**River**  
**3ZWT260A**

Jersey  
(95% viscose/  
5% spandex)  
3/4 sleeve  
with shirring at sides  
Easy slim silhouette  
Hip length  
with curved hem

**Blue**  
**Ivory**



**Blakely**  
**3ZWT262A**

Washed twill  
(55% viscose/45% rayon)  
Buttons at front placket  
3/4 length sleeve  
with ruffle tier  
Trim at sleeve edge  
Hip length  
with slit at sides

**Blue**  
**Ivory**



**Esther**  
**3ZWT560A**

Washed twill  
(55% viscose/45% rayon)  
Slim/straight leg  
Flat front waistband,  
smocked at back  
for pull-on fit  
Tie belt at waist  
Full length (30" Inseam)

**Blue**  
**Ivory**





**Blakely  
3ZWT262A**

-----  
Washed twill  
(55% viscose/45% rayon)  
Buttons at front placket  
3/4 length sleeve  
with ruffle tier  
Trim at sleeve edge  
Hip length  
with slit at sides

**Blue  
Ivory**

**Esther  
3ZWT560A**

-----  
Washed twill  
(55% viscose/45% rayon)  
Slim/straight leg  
Flat front waistband,  
smocked at back  
for pull-on fit  
Tie belt at waist  
Full length (30" Inseam)

**Blue  
Ivory**



**Katherine  
3ZWT660A**

-----  
Matte jersey  
(96% polyester/  
4% spandex)  
Mesh lining  
(95% nylon/8% spandex)  
keyhole at back neck  
with button  
Slim easy fit  
Above the knee length  
(35.5" HPS)

**Blue  
Ivory**



**Katherine  
3ZWT660A**

-----  
Matte jersey  
(96% polyester/  
4% spandex)  
Mesh lining  
(95% nylon/8% spandex)  
keyhole at back neck  
with button  
Slim easy fit  
Above the knee length  
(35.5" HPS)

**Blue  
Ivory**





**Kylie  
3ZWT662A**  
-----

Lightweight washed linen  
(100% linen)  
Challis lining  
(100% viscose)  
Elastic smocking at waist  
Pockets at hips  
Bell sleeve  
Trim detailing  
at sleeve & hem  
Above the knee length  
(35.5" HPS)

**Blue  
Ivory**



**Kylie  
3ZWT662A**  
-----

Lightweight washed linen  
(100% linen)  
Challis lining  
(100% viscose)  
Elastic smocking at waist  
Pockets at hips  
Bell sleeve  
Trim detailing  
at sleeve & hem  
Above the knee length  
(35.5" HPS)

**Blue  
Ivory**



**Kylie  
3ZWT662M**  
-----

Lightweight washed linen  
(100% linen)  
Challis lining  
(100% viscose)  
Elastic smocking at waist  
Pockets at hips  
Bell sleeve  
Trim detailing  
at sleeve & hem  
Midi length (46" HPS)

**Blue  
Ivory**





**Kylie**  
**3ZWT662M**

Lightweight washed linen  
(100% linen)  
Challis lining  
(100% viscose)  
Elastic smocking at waist  
Pockets at hips  
Bell sleeve  
Trim detailing  
at sleeve & hem  
Midi length (46" HPS)

**Blue**  
**Ivory**



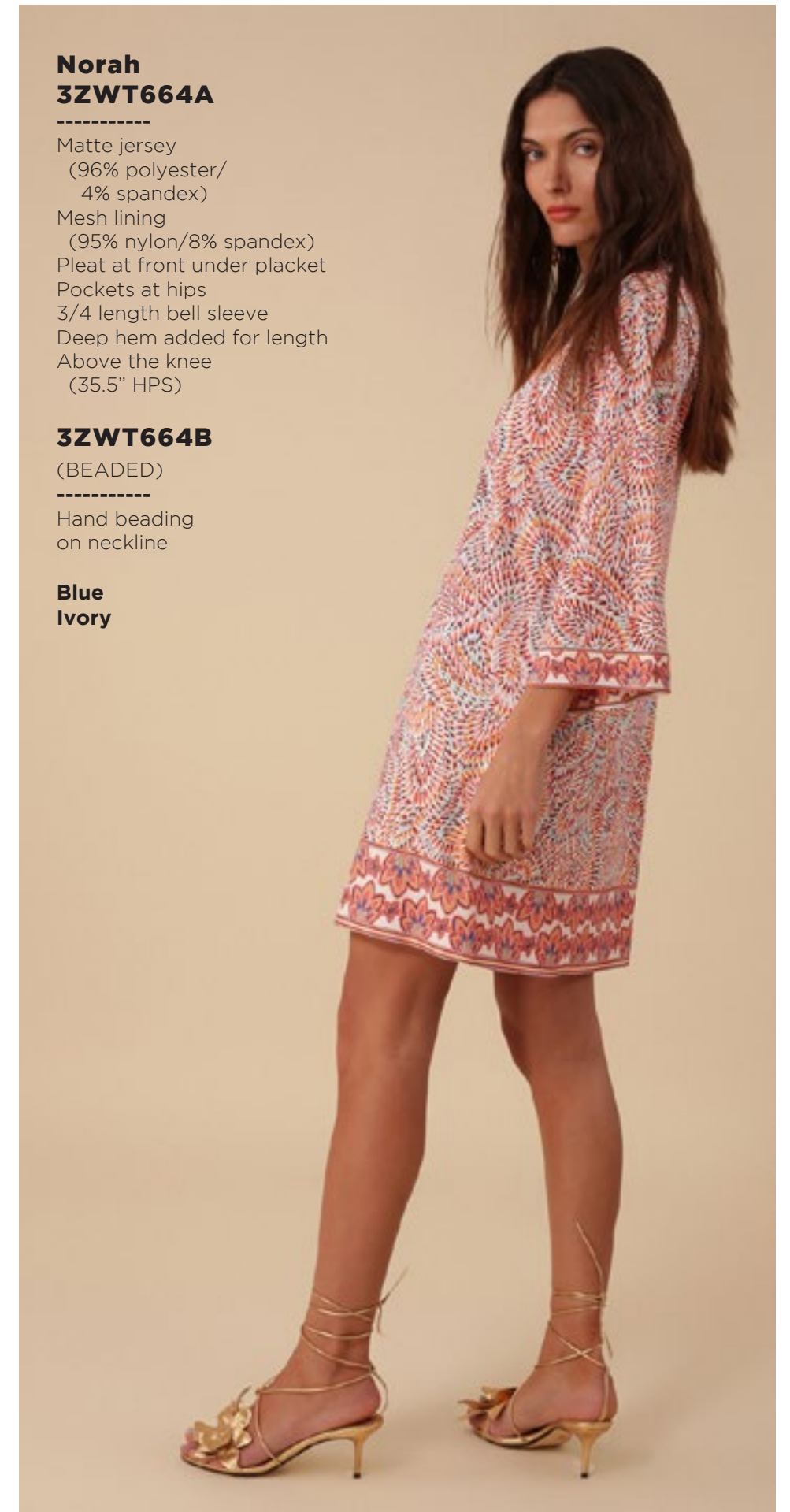
**Norah**  
**3ZWT664A**

Matte jersey  
(96% polyester/  
4% spandex)  
Mesh lining  
(95% nylon/8% spandex)  
Pleat at front under placket  
Pockets at hips  
3/4 length bell sleeve  
Deep hem added for length  
Above the knee  
(35.5" HPS)

**3ZWT664B**  
(BEADED)

Hand beading  
on neckline

**Blue**  
**Ivory**



**Norah**  
**3ZWT664A**

Matte jersey  
(96% polyester/  
4% spandex)  
Mesh lining  
(95% nylon/8% spandex)  
Pleat at front under placket  
Pockets at hips  
3/4 length bell sleeve  
Deep hem added for length  
Above the knee  
(35.5" HPS)

**3ZWT664B**  
(BEADED)

Hand beading  
on neckline

**Blue**  
**Ivory**



**Amaya**  
**3ZWT666A**

Chiffon  
(100% polyester)  
Ruffle at front yoke  
Elastic smocked waist  
3/4 length sleeve  
with smocked cuff  
Tiered skirt  
with slit at lower tiers  
Ankle length at front  
with hi/low hem  
(49" at front, 52" at back)

**Blue**  
**Ivory**



**Amaya**  
**3ZWT666A**

Chiffon  
(100% polyester)  
Ruffle at front yoke  
Elastic smocked waist  
3/4 length sleeve  
with smocked cuff  
Tiered skirt  
with slit at lower tiers  
Ankle length at front  
with hi/low hem  
(49" at front, 52" at back)

**Blue**  
**Ivory**





This book is a presentation of a selection of Hale Bob product and is correct at time of publication.

To view the entire collection of products including updates and additions. You can view product line sheets at [halebob.com](http://halebob.com) by logging into the "Merchant" section of our website.

Prices and products posted in this book are current at time of publication but are subject to change.

**Sales Director**

East Coast  
South East  
Puerto Rico  
Canada  
Majors

**Cathy Cooley**

310-963-2463  
[cathy@halebob.com](mailto:cathy@halebob.com)

**Sales Executive**

Mexico  
Central America  
South America

**Isabela Peralta**

323-394-1739  
[isabela@halebob.com](mailto:isabela@halebob.com)

**Sales Executive**

Midwest

**Tracy Holden**

214-454-1176  
[tracy@halebob.com](mailto:tracy@halebob.com)

**For Marketing & Press Inquiries:**

Marianna Gunther  
[marianna@halebob.com](mailto:marianna@halebob.com)

# HALE BOB

LOS ANGELES

