

# HALE BOB

LOS ANGELES

Season II







High Contrast



**Renata**  
**4YAS210A**

Washed silk georgette  
(100% silk)  
Body lined with jersey  
(95% viscose/  
5% spandex)  
Long sleeve  
with smocked cuff  
Hip length  
with curved hem

**Coral**  
**Ivory**  
**Turquoise**

**\$118**



**Renata**  
**4YAS210A**

Washed silk georgette  
(100% silk)  
Body lined with jersey  
(95% viscose/  
5% spandex)  
Long sleeve  
with smocked cuff  
Hip length  
with curved hem

**Coral**  
**Ivory**  
**Turquoise**

**\$118**



**Renata**  
**4YAS210A**

Washed silk georgette  
(100% silk)  
Body lined with jersey  
(95% viscose/  
5% spandex)  
Long sleeve  
with smocked cuff  
Hip length  
with curved hem

**Coral**  
**Ivory**  
**Turquoise**

**\$118**





**Madilynn  
4YAS212A**

Washed crepe de chine  
(100% silk)  
Shell buttons at front  
Long sleeve  
with cuff  
Tab at sleeve to roll  
to 3/4 length  
Low hip length  
with slits at sides

**Coral  
Ivory  
Turquoise**

**\$148**



**Madilynn  
4YAS212A**

Washed crepe de chine  
(100% silk)  
Shell buttons at front  
Long sleeve  
with cuff  
Tab at sleeve to roll  
to 3/4 length  
Low hip length  
with slits at sides

**Coral  
Ivory  
Turquoise**

**\$148**



**Madilynn  
4YAS212A**

Washed crepe de chine  
(100% silk)  
Shell buttons at front  
Long sleeve  
with cuff  
Tab at sleeve to roll  
to 3/4 length  
Low hip length  
with slits at sides

**Coral  
Ivory  
Turquoise**

**\$148**





**Ailani**  
**4YAS214A**

Matte jersey  
(96% polyester/  
4% spandex)  
Embroidered yoke  
Shirring under yoke  
at front body  
Long sleeve  
with cuff  
Hip length

**Coral**  
**Ivory**  
**Turquoise**

**\$88**



**Ailani**  
**4YAS214A**

Matte jersey  
(96% polyester/  
4% spandex)  
Embroidered yoke  
Shirring under yoke  
at front body  
Long sleeve  
with cuff  
Hip length

**Coral**  
**Ivory**  
**Turquoise**

**\$88**



**Ailani**  
**4YAS214A**

Matte jersey  
(96% polyester/  
4% spandex)  
Embroidered yoke  
Shirring under yoke  
at front body  
Long sleeve  
with cuff  
Hip length

**Coral**  
**Ivory**  
**Turquoise**

**\$88**







**Analia  
4YAS216A**

Washed silk/viscose  
charmeuse front  
(25% silk/75% viscose)  
Jersey sleeves/yoke/back  
(95% viscose/  
5% spandex)  
Relaxed, easy fit  
High hip length

**Coral  
Ivory  
Turquoise**

**\$58**

**Katie  
4YAS510A**

Washed silk/viscose  
charmeuse front  
(25% silk/75% viscose)  
Elastic at back & side waist,  
tab with d-rings at front  
Patch pockets at hips  
Cargo pockets at legs  
Pockets at back  
Full length  
(30.5" Inseam)

**Coral  
Ivory  
Turquoise**

**\$118**



**Analia  
4YAS216A**

Washed silk/viscose  
charmeuse front  
(25% silk/75% viscose)  
Jersey sleeves/yoke/back  
(95% viscose/  
5% spandex)  
Relaxed, easy fit  
High hip length

**Coral  
Ivory  
Turquoise**

**\$58**

**Katie  
4YAS510A**

Washed silk/viscose  
charmeuse front  
(25% silk/75% viscose)  
Elastic at back & side waist,  
tab with d-rings at front  
Patch pockets at hips  
Cargo pockets at legs  
Pockets at back  
Full length  
(30.5" Inseam)

**Coral  
Ivory  
Turquoise**

**\$118**



**Analia  
4YAS216A**

Washed silk/viscose  
charmeuse front  
(25% silk/75% viscose)  
Jersey sleeves/yoke/back  
(95% viscose/  
5% spandex)  
Relaxed, easy fit  
High hip length

**Coral  
Ivory  
Turquoise**

**\$58**

**Katie  
4YAS510A**

Washed silk/viscose  
charmeuse front  
(25% silk/75% viscose)  
Elastic at back & side waist,  
tab with d-rings at front  
Patch pockets at hips  
Cargo pockets at legs  
Pockets at back  
Full length  
(30.5" Inseam)

**Coral  
Ivory  
Turquoise**

**\$118**





**Irene  
4YAS310A**

Cotton jacquard sweater  
(100% Cotton)  
Shawl collar,  
fringe at edges  
Pockets at hips  
Wrap body with belt  
Buttons at front  
for closure option  
Low hip length  
(28" HPS)

**Coral  
Ivory  
Turquoise**

**\$98**



**Irene  
4YAS310A**

Cotton jacquard sweater  
(100% Cotton)  
Shawl collar,  
fringe at edges  
Pockets at hips  
Wrap body with belt  
Buttons at front  
for closure option  
Low hip length  
(28" HPS)

**Coral  
Ivory  
Turquoise**

**\$98**



**Irene  
4YAS310A**

Cotton jacquard sweater  
(100% Cotton)  
Shawl collar,  
fringe at edges  
Pockets at hips  
Wrap body with belt  
Buttons at front  
for closure option  
Low hip length  
(28" HPS)

**Coral  
Ivory  
Turquoise**

**\$98**





**Zariah  
4YAS610A**

Matte jersey  
(96% polyester/  
4% spandex)  
Mesh lining  
(95% nylon/8% spandex)  
Pleat at front  
Pockets at hips  
3/4 length bell sleeve  
Deep hem added  
for length  
Above the knee  
(35.5" HPS)

**\$98**

**4YAS610B**  
(BEADED)

Hand beading  
on neckline

**\$108**

**Coral  
Ivory  
Turquoise**



**Zariah  
4YAS610A**

Matte jersey  
(96% polyester/  
4% spandex)  
Mesh lining  
(95% nylon/8% spandex)  
Pleat at front  
Pockets at hips  
3/4 length bell sleeve  
Deep hem added  
for length  
Above the knee  
(35.5" HPS)

**\$98**

**4YAS610B**  
(BEADED)

Hand beading  
on neckline

**\$108**

**Coral  
Ivory  
Turquoise**



**Zariah  
4YAS610A**

Matte jersey  
(96% polyester/  
4% spandex)  
Mesh lining  
(95% nylon/8% spandex)  
Pleat at front  
Pockets at hips  
3/4 length bell sleeve  
Deep hem added  
for length  
Above the knee  
(35.5" HPS)

**\$98**

**4YAS610B**  
(BEADED)

Hand beading  
on neckline

**\$108**

**Coral  
Ivory  
Turquoise**



**Amber**  
**4YAS612A**

Matte jersey  
(96% polyester/  
4% spandex)  
Mesh lining  
(95% nylon/8% spandex)  
keyhole at back neck  
with button  
Slim easy fit  
Above the knee length  
(35.5" HPS)

**Coral**  
**Ivory**  
**Turquoise**

**\$88**



**Amber**  
**4YAS612A**

Matte jersey  
(96% polyester/  
4% spandex)  
Mesh lining  
(95% nylon/8% spandex)  
keyhole at back neck  
with button  
Slim easy fit  
Above the knee length  
(35.5" HPS)

**Coral**  
**Ivory**  
**Turquoise**

**\$88**



**Amber**  
**4YAS612A**

Matte jersey  
(96% polyester/  
4% spandex)  
Mesh lining  
(95% nylon/8% spandex)  
keyhole at back neck  
with button  
Slim easy fit  
Above the knee length  
(35.5" HPS)

**Coral**  
**Ivory**  
**Turquoise**

**\$88**





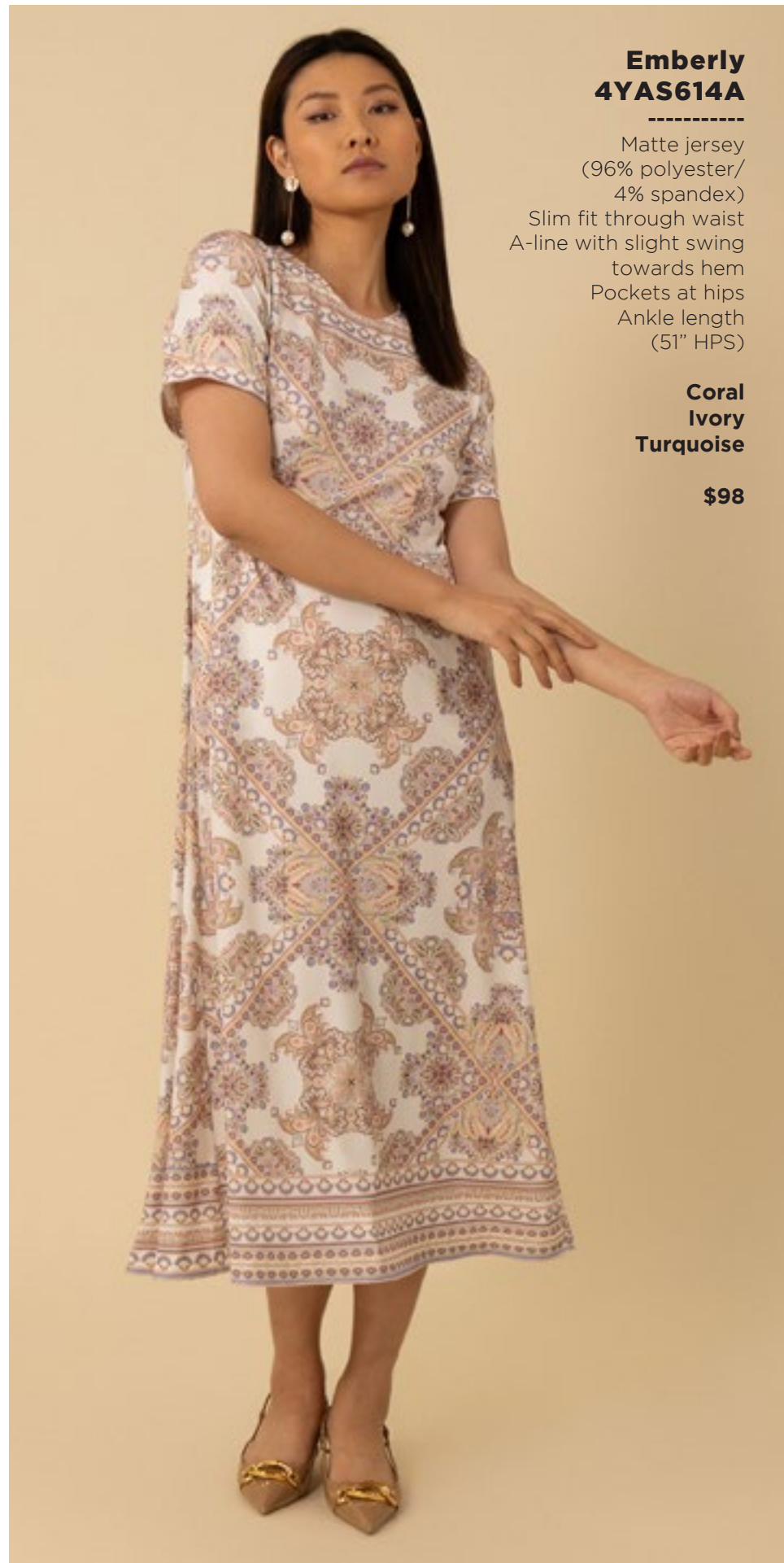


**Emberly  
4YAS614A**

Matte jersey  
(96% polyester/  
4% spandex)  
Slim fit through waist  
A-line with slight swing  
towards hem  
Pockets at hips  
Ankle length  
(51" HPS)

**Coral  
Ivory  
Turquoise**

**\$98**



**Emberly  
4YAS614A**

Matte jersey  
(96% polyester/  
4% spandex)  
Slim fit through waist  
A-line with slight swing  
towards hem  
Pockets at hips  
Ankle length  
(51" HPS)

**Coral  
Ivory  
Turquoise**

**\$98**



**Emberly  
4YAS614A**

Matte jersey  
(96% polyester/  
4% spandex)  
Slim fit through waist  
A-line with slight swing  
towards hem  
Pockets at hips  
Ankle length  
(51" HPS)

**Coral  
Ivory  
Turquoise**

**\$98**





**Mara  
4YAS616A**

Washed silk/rayon chiffon  
(70% rayon/30% silk)  
Jersey lining  
(95% viscose/  
5% spandex)  
Pleating at front bodice  
& skirt  
Pleated sleeve detailing  
Pockets at hips  
Sleeve with smocking  
above elbow with  
long ruffle  
Maxi length  
(58" HPS)

**Coral  
Ivory  
Turquoise**

**\$178**



**Mara  
4YAS616A**

Washed silk/rayon chiffon  
(70% rayon/30% silk)  
Jersey lining  
(95% viscose/  
5% spandex)  
Pleating at front bodice  
& skirt  
Pleated sleeve detailing  
Pockets at hips  
Sleeve with smocking  
above elbow with  
long ruffle  
Maxi length  
(58" HPS)

**Coral  
Ivory  
Turquoise**

**\$178**



**Mara  
4YAS616A**

Washed silk/rayon chiffon  
(70% rayon/30% silk)  
Jersey lining  
(95% viscose/  
5% spandex)  
Pleating at front bodice  
& skirt  
Pleated sleeve detailing  
Pockets at hips  
Sleeve with smocking  
above elbow with  
long ruffle  
Maxi length  
(58" HPS)

**Coral  
Ivory  
Turquoise**

**\$178**





**Erin  
4YAS980A**

-----  
Silk Habotai  
36" square

**Coral  
Ivory  
Turquoise**

**\$44**



**Erin  
4YAS980A**

-----  
Silk Habotai  
36" square

**Coral  
Ivory  
Turquoise**

**\$44**



**Erin  
4YAS980A**

-----  
Silk Habotai  
36" square

**Coral  
Ivory  
Turquoise**

**\$44**







# Bright Side





**Mckinley  
4YBG220A**

Lurex Knit Jacquard  
Oversize fit  
Low hip length

**Black & White  
Pink**

**\$98**



**Virginia  
4YBG520A**

Lurex Knit Jacquard  
Elastic at waist  
Full leg with slight flare  
at hem  
Full length

**Black & White  
Pink**

**\$128**

**Mckinley  
4YBG220A**

Lurex Knit Jacquard  
Oversize fit  
Low hip length

**Black & White  
Pink**

**\$98**



**Virginia  
4YBG520A**

Lurex Knit Jacquard  
Elastic at waist  
Full leg with slight flare  
at hem  
Full length

**Black & White  
Pink**

**\$128**





**Ariya**  
**4YBG620A**

-----  
Lurex Knit Jacquard  
V-neck with kimono sleeve  
Slim fit through body  
Flare at hem

**Black & White**  
**Pink**

**\$168**



**Ariya**  
**4YBG620A**

-----  
Lurex Knit Jacquard  
V-neck with kimono sleeve  
Slim fit through body  
Flare at hem

**Black & White**  
**Pink**

**\$168**



**Lylah**  
**4YBG622A**

-----  
Lurex Knit Jacquard  
Buttons at front neck  
Long flared sleeve  
A-line skirt  
Above the knee  
(35.5" HPS)

**Black & White**  
**Pink**

**\$138**





**Lylah**  
**4YBG622A**

-----  
Lurex Knit Jacquard  
Buttons at front neck  
Long flared sleeve  
A-line skirt  
Above the knee  
(35.5" HPS)

**Black & White**  
**Pink**

**\$138**





Limited  
Edition  
Denim





**Blake  
ODEN510B**

Stretch denim  
LTB/NAV content:  
80% cotton/  
18% polyester/  
2% spandex  
BLK/WHT content:  
96% cotton/  
3% Polyester/1% spandex  
High waist (12" rise)  
Wide leg with flare  
Stitched pin tuck  
at front & back  
Side pockets at front  
Patch pockets at back  
33" inseam  
with invisible hem  
Deep hem  
to adjust length

**Black**  
**Light blue wash**  
**Dark blue wash**  
**White**

**\$88**



**Blake  
ODEN510B**

Stretch denim  
LTB/NAV content:  
80% cotton/  
18% polyester/  
2% spandex  
BLK/WHT content:  
96% cotton/  
3% Polyester/1% spandex  
High waist (12" rise)  
Wide leg with flare  
Stitched pin tuck  
at front & back  
Side pockets at front  
Patch pockets at back  
33" inseam  
with invisible hem  
Deep hem  
to adjust length

**Black**  
**Light blue wash**  
**Dark blue wash**  
**White**

**\$88**



**Blake  
ODEN510B**

Stretch denim  
LTB/NAV content:  
80% cotton/  
18% polyester/  
2% spandex  
BLK/WHT content:  
96% cotton/  
3% Polyester/1% spandex  
High waist (12" rise)  
Wide leg with flare  
Stitched pin tuck  
at front & back  
Side pockets at front  
Patch pockets at back  
33" inseam  
with invisible hem  
Deep hem  
to adjust length

**Black**  
**Light blue wash**  
**Dark blue wash**  
**White**

**\$88**





**Blake  
ODEN510B**

Stretch denim  
LTB/NAV content:  
80% cotton/  
18% polyester/  
2% spandex  
BLK/WHT content:  
96% cotton/  
3% Polyester/1% spandex  
High waist (12" rise)  
Wide leg with flare  
Stitched pin tuck  
at front & back  
Side pockets at front  
Patch pockets at back  
33" inseam  
with invisible hem  
Deep hem  
to adjust length

**Black  
Light blue wash  
Dark blue wash  
White**

**\$88**



**Jenna  
ODEN512A**

Stretch denim  
LTB/NAV content:  
80% cotton/  
18% polyester/2% spandex  
BLK/WHT content:  
96% cotton/  
3% Polyester/1% spandex  
High waist (11.5" rise)  
Patch pockets  
at front & back  
Straight leg  
with slight flare  
33" inseam  
with invisible hem  
Deep hem  
to adjust length

**Black  
Light blue wash  
Dark blue wash  
White**

**\$88**







**Jenna  
ODEN512A**

Stretch denim  
LTB/NAV content:  
80% cotton/  
18% polyester/2% spandex  
BLK/WHT content:  
96% cotton/  
3% Polyester/1% spandex  
High waist (11.5" rise)  
Patch pockets  
at front & back  
Straight leg  
with slight flare  
33" inseam  
with invisible hem  
Deep hem  
to adjust length

**Black**  
**Light blue wash**  
**Dark blue wash**  
**White**

**\$88**



**Jenna  
ODEN512A**

Stretch denim  
LTB/NAV content:  
80% cotton/  
18% polyester/2% spandex  
BLK/WHT content:  
96% cotton/  
3% Polyester/1% spandex  
High waist (11.5" rise)  
Patch pockets  
at front & back  
Straight leg  
with slight flare  
33" inseam  
with invisible hem  
Deep hem  
to adjust length

**Black**  
**Light blue wash**  
**Dark blue wash**  
**White**

**\$88**



**Jenna  
ODEN512A**

Stretch denim  
LTB/NAV content:  
80% cotton/  
18% polyester/2% spandex  
BLK/WHT content:  
96% cotton/  
3% Polyester/1% spandex  
High waist (11.5" rise)  
Patch pockets  
at front & back  
Straight leg  
with slight flare  
33" inseam  
with invisible hem  
Deep hem  
to adjust length

**Black**  
**Light blue wash**  
**Dark blue wash**  
**White**

**\$88**





Wild Winds



**Mallory  
4YDD230A**

Silk Cotton Voile  
(30% silk/70% cotton)  
Jersey cami lining  
(95% viscose/  
5% spandex)  
Ruffle at neck, deep  
keyhole with buttons  
Long sleeve  
with elastic & ruffle  
Hip length

**Blue  
Ivory  
Pink**

**\$108**



**Mallory  
4YDD230A**

Silk Cotton Voile  
(30% silk/70% cotton)  
Jersey cami lining  
(95% viscose/  
5% spandex)  
Ruffle at neck, deep  
keyhole with buttons  
Long sleeve  
with elastic & ruffle  
Hip length

**Blue  
Ivory  
Pink**

**\$108**



**Mallory  
4YDD230A**

Silk Cotton Voile  
(30% silk/70% cotton)  
Jersey cami lining  
(95% viscose/  
5% spandex)  
Ruffle at neck, deep  
keyhole with buttons  
Long sleeve  
with elastic & ruffle  
Hip length

**Blue  
Ivory  
Pink**

**\$108**





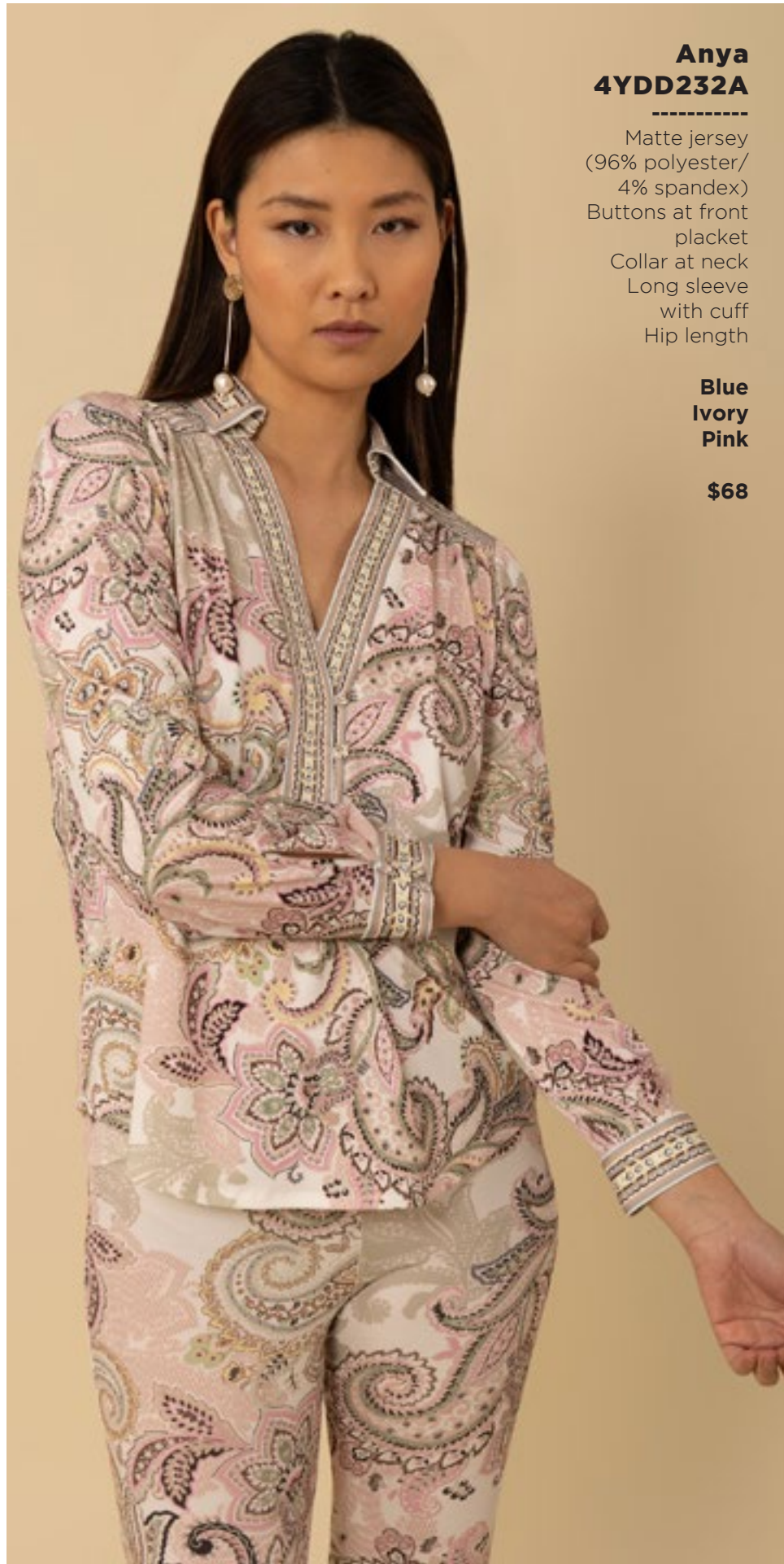


**Anya  
4YDD232A**

Matte jersey  
(96% polyester/  
4% spandex)  
Buttons at front  
placket  
Collar at neck  
Long sleeve  
with cuff  
Hip length

**Blue  
Ivory  
Pink**

**\$68**



**Anya  
4YDD232A**

Matte jersey  
(96% polyester/  
4% spandex)  
Buttons at front  
placket  
Collar at neck  
Long sleeve  
with cuff  
Hip length

**Blue  
Ivory  
Pink**

**\$68**



**Anya  
4YDD232A**

Matte jersey  
(96% polyester/  
4% spandex)  
Buttons at front  
placket  
Collar at neck  
Long sleeve  
with cuff  
Hip length

**Blue  
Ivory  
Pink**

**\$68**



**Opal**  
**4YDD530A**

Matte jersey  
(96% polyester/  
4% spandex)  
Shirring detail at front &  
back waistband  
High waist  
Slim leg  
with flare at hem  
Full length  
(30.5" inseam)

**Blue**  
**Ivory**  
**Pink**

**\$78**



**Opal**  
**4YDD530A**

Matte jersey  
(96% polyester/  
4% spandex)  
Shirring detail at front &  
back waistband  
High waist  
Slim leg  
with flare at hem  
Full length  
(30.5" inseam)

**Blue**  
**Ivory**  
**Pink**

**\$78**



**Opal**  
**4YDD530A**

Matte jersey  
(96% polyester/  
4% spandex)  
Shirring detail at front &  
back waistband  
High waist  
Slim leg  
with flare at hem  
Full length  
(30.5" inseam)

**Blue**  
**Ivory**  
**Pink**

**\$78**







**Shelby  
4YDD630A**

Chiffon  
(100% polyester)  
Jersey lining  
(95% viscose/  
5% spandex)  
Smocking around neck  
Buttons at center front  
Smocked waistband  
Tiered skirt with pockets  
Long sleeve with keyhole  
detailing at arm  
Above the knee  
(35.5"HPS)

**Blue  
Ivory  
Pink**

**\$108**



**Shelby  
4YDD630A**

Chiffon  
(100% polyester)  
Jersey lining  
(95% viscose/  
5% spandex)  
Smocking around neck  
Buttons at center front  
Smocked waistband  
Tiered skirt with pockets  
Long sleeve with keyhole  
detailing at arm  
Above the knee  
(35.5"HPS)

**Blue  
Ivory  
Pink**

**\$108**



**Shelby  
4YDD630A**

Chiffon  
(100% polyester)  
Jersey lining  
(95% viscose/  
5% spandex)  
Smocking around neck  
Buttons at center front  
Smocked waistband  
Tiered skirt with pockets  
Long sleeve with keyhole  
detailing at arm  
Above the knee  
(35.5"HPS)

**Blue  
Ivory  
Pink**

**\$108**





**Shelby  
4YDD630L  
(Ankle Length)**

-----  
Chiffon  
(100% polyester)  
Jersey lining  
(95% viscose/  
5% spandex)  
Smocking around neck  
Buttons at center front  
Smocked waistband  
Tiered skirt with pockets  
Long sleeve with keyhole  
detailing at arm  
Ankle length  
(54" HPS)

**Blue  
Ivory  
Pink**

**\$128**



**Shelby  
4YDD630L  
(Ankle Length)**

-----  
Chiffon  
(100% polyester)  
Jersey lining  
(95% viscose/  
5% spandex)  
Smocking around neck  
Buttons at center front  
Smocked waistband  
Tiered skirt with pockets  
Long sleeve with keyhole  
detailing at arm  
Ankle length  
(54" HPS)

**Blue  
Ivory  
Pink**

**\$128**



**Shelby  
4YDD630L  
(Ankle Length)**

-----  
Chiffon  
(100% polyester)  
Jersey lining  
(95% viscose/  
5% spandex)  
Smocking around neck  
Buttons at center front  
Smocked waistband  
Tiered skirt with pockets  
Long sleeve with keyhole  
detailing at arm  
Ankle length  
(54" HPS)

**Blue  
Ivory  
Pink**

**\$128**



**Clementine  
4YDD632A**

Washed linen  
(100% linen)  
Buttons at CF  
Tie belt at waist  
Long sleeve with  
tab to roll sleeve  
to 3/4 length  
Voluminous skirt  
with gussets  
Ankle length  
(54" HPS)

**Blue  
Ivory  
Pink**

**\$228**



**Clementine  
4YDD632A**

Washed linen  
(100% linen)  
Buttons at CF  
Tie belt at waist  
Long sleeve with  
tab to roll sleeve  
to 3/4 length  
Voluminous skirt  
with gussets  
Ankle length  
(54" HPS)

**Blue  
Ivory  
Pink**

**\$228**



**Clementine  
4YDD632A**

Washed linen  
(100% linen)  
Buttons at CF  
Tie belt at waist  
Long sleeve with  
tab to roll sleeve  
to 3/4 length  
Voluminous skirt  
with gussets  
Ankle length  
(54" HPS)

**Blue  
Ivory  
Pink**

**\$228**







**Remy  
4YDD634A**

-----  
Matte jersey  
(96% polyester/  
4% spandex)  
Mesh lining  
(95% nylon/8% spandex)  
Slim fit through bodice  
A-line skirt  
with pleat at waist  
3/4 sleeve with cuff  
Above the knee length  
(35.5" HPS)

**Blue  
Ivory  
Pink**

**\$98**



**Remy  
4YDD634A**

-----  
Matte jersey  
(96% polyester/  
4% spandex)  
Mesh lining  
(95% nylon/8% spandex)  
Slim fit through bodice  
A-line skirt  
with pleat at waist  
3/4 sleeve with cuff  
Above the knee length  
(35.5" HPS)

**Blue  
Ivory  
Pink**

**\$98**



**Remy  
4YDD634A**

-----  
Matte jersey  
(96% polyester/  
4% spandex)  
Mesh lining  
(95% nylon/8% spandex)  
Slim fit through bodice  
A-line skirt  
with pleat at waist  
3/4 sleeve with cuff  
Above the knee length  
(35.5" HPS)

**Blue  
Ivory  
Pink**

**\$98**





**Remy  
4YDD634D - MIDI**  
-----

Matte jersey  
(96% polyester/  
4% spandex)  
Mesh lining  
(95% nylon/8% spandex)  
Slim fit through bodice  
A-line skirt  
with pleat at waist  
3/4 sleeve with cuff  
Below the knee length  
(40" HPS)

**Blue  
Ivory  
Pink**

**\$108**



**Remy  
4YDD634D - MIDI**  
-----

Matte jersey  
(96% polyester/  
4% spandex)  
Mesh lining  
(95% nylon/8% spandex)  
Slim fit through bodice  
A-line skirt  
with pleat at waist  
3/4 sleeve with cuff  
Below the knee length  
(40" HPS)

**Blue  
Ivory  
Pink**

**\$108**



**Remy  
4YDD634D - MIDI**  
-----

Matte jersey  
(96% polyester/  
4% spandex)  
Mesh lining  
(95% nylon/8% spandex)  
Slim fit through bodice  
A-line skirt  
with pleat at waist  
3/4 sleeve with cuff  
Below the knee length  
(40" HPS)

**Blue  
Ivory  
Pink**

**\$108**



**Xiomara  
4YDD830A**

-----  
Stretch Swim  
(75% Nylon/25% Spandex)  
Scoopneck with keyhole  
Low back

**Blue  
Ivory  
Pink**

**\$68**



**Xiomara  
4YDD830A**

-----  
Stretch Swim  
(75% Nylon/25% Spandex)  
Scoopneck with keyhole  
Low back

**Blue  
Ivory  
Pink**

**\$68**



**Xiomara  
4YDD830A**

-----  
Stretch Swim  
(75% Nylon/  
25% Spandex)  
Scoopneck  
with keyhole  
Low back

**Blue  
Ivory  
Pink**

**\$68**





Indie Spirit





**Elliott  
4YEP240A**

-----  
Embroidered  
lightweight twill  
(55% Visocse/  
45% Rayon)

**Black  
White**

**\$118**



**Elliott  
4YEP240A**

-----  
Embroidered  
lightweight twill  
(55% Visocse/  
45% Rayon)

**Black  
White**

**\$118**



**Elliott  
4YEP240T**

-----  
Embroidered chambray  
(100% Tencel)

**Blue**

**\$118**







**Elora  
4YEP640A**

-----  
Embroidered  
lightweight twill  
(55% Visocse/  
45% Rayon)  
Smocking at neck  
& waist  
Bell sleeve  
Swing skirt  
with pockets  
Above the knee length  
(35.5" HPS)

**Black  
White**

**\$148**



**Elora  
4YEP640A**

-----  
Embroidered  
lightweight twill  
(55% Visocse/  
45% Rayon)  
Smocking at neck  
& waist  
Bell sleeve  
Swing skirt  
with pockets  
Above the knee length  
(35.5" HPS)

**Black  
White**

**\$148**



**Elora  
4YEP640T**

-----  
Embroidered chambray  
(100% Tencel)  
Smocking at neck  
& waist  
Bell sleeve  
Swing skirt  
with pockets  
Above the knee length  
(35.5" HPS)

**Blue**

**\$148**





**Katalina  
4YEP642A**

Embroidered  
lightweight twill  
(55% Visocse/  
45% Rayon)  
Smocking at neck  
& waist  
Bell sleeve  
Swing skirt  
with pockets  
Ankle length  
(52" HPS)

**Black  
White**

**\$188**



**Katalina  
4YEP642A**

Embroidered  
lightweight twill  
(55% Visocse/  
45% Rayon)  
Smocking at neck  
& waist  
Bell sleeve  
Swing skirt  
with pockets  
Ankle length  
(52" HPS)

**Black  
White**

**\$188**



**Katalina  
4YEP642T**

Embroidered chambray  
(100% Tencel)  
Smocking at neck  
& waist  
Bell sleeve  
Swing skirt  
with pockets  
Ankle length  
(52" HPS)

**Blue**

**\$188**





Dew  
Drop



**Skyler  
4YPR250A**

-----  
Washed Voile  
(30% silk/70% cotton)  
Body is lined  
(100% viscose)  
Pockets at sides  
Voluminous body & sleeve  
\*\*NOTE: Sample is too full,  
production will have less  
volume

**Black  
Pink**

**\$108**



**Skyler  
4YPR250A**

-----  
Washed Voile  
(30% silk/70% cotton)  
Body is lined  
(100% viscose)  
Pockets at sides  
Voluminous body & sleeve  
\*\*NOTE: Sample is too full,  
production will have less  
volume

**Black  
Pink**

**\$108**



**Hanna  
4YPR252A**

-----  
Washed crepe de chine  
(100% silk)  
Smocked neckline  
Buttons at CF  
Voluminous sleeve  
with smocked cuff  
Hip length  
with curved hem

**Black  
Pink**

**\$148**







**Hanna  
4YPR252A**

Washed crepe de chine  
(100% silk)  
Smocked neckline  
Buttons at CF  
Voluminous sleeve  
with smocked cuff  
Hip length  
with curved hem

**Black  
Pink**

**\$148**



**Kaliyah  
4YPR650A**

Matte jersey  
(96% polyester/  
4% spandex)  
Slim fit through rib cage,  
swingy fit towards hem  
Pockets at hips  
Tie belt at waist  
3/4 bell sleeve  
Above the knee  
(35.5" HPS)

**Black  
Pink**

**\$108**



**Kaliyah  
4YPR650A**

Matte jersey  
(96% polyester/  
4% spandex)  
Slim fit through rib cage,  
swingy fit towards hem  
Pockets at hips  
Tie belt at waist  
3/4 bell sleeve  
Above the knee  
(35.5" HPS)

**Black  
Pink**

**\$108**



**Alanna  
4YPR652A**

-----  
Washed silk/rayon chiffon  
(70% rayon/30% silk)  
Jersey lining  
(95% viscose/  
5% spandex)  
Pleating at front bodice  
& skirt  
Pleated sleeve detailing  
Pockets at hips  
Sleeve with smocking  
above elbow with  
long ruffle  
Maxi length  
(58" HPS)

**Black  
Pink**

**\$178**



**Alanna  
4YPR652A**

-----  
Washed silk/rayon chiffon  
(70% rayon/30% silk)  
Jersey lining  
(95% viscose/  
5% spandex)  
Pleating at front bodice  
& skirt  
Pleated sleeve detailing  
Pockets at hips  
Sleeve with smocking  
above elbow with  
long ruffle  
Maxi length  
(58" HPS)

**Black  
Pink**

**\$178**



**Haley  
4YPR654A**

-----  
Silk Linen Organza  
(55% silk/ 45% linen)  
Full lined  
(100% viscose)  
Buttons at front neck  
Embroidered eyelet trim  
at neck and sleeve edge  
Voluminous swing skirt  
Braided belt with beads  
Above the knee  
(35.5" HPS)

**Black  
Pink**

**\$228**





**Haley  
4YPR654A**

Silk Linen Organza  
(55% silk/ 45% linen)  
Full lined  
(100% viscose)  
Buttons at front neck  
Embroidered eyelet trim  
at neck and sleeve edge  
Voluminous swing skirt  
Braided belt with beads  
Above the knee  
(35.5" HPS)

**Black  
Pink**

**\$228**



**Haley  
4YPR654M  
(Ankle length)**

Silk Linen Organza  
(55% silk/ 45% linen)  
Full lined  
(100% viscose)  
Buttons at front neck  
Embroidered eyelet trim  
at neck and sleeve edge  
Voluminous swing skirt  
Braided belt with beads  
Ankle length  
(52" HPS)

**Black  
Pink**

**\$268**



**Haley  
4YPR654M  
(Ankle length)**

Silk Linen Organza  
(55% silk/ 45% linen)  
Full lined  
(100% viscose)  
Buttons at front neck  
Embroidered eyelet trim  
at neck and sleeve edge  
Voluminous swing skirt  
Braided belt with beads  
Ankle length  
(52" HPS)

**Black  
Pink**

**\$268**









# California Dreaming







**Itzel  
4YRM260A**

Stretch Jersey  
(95% viscose/  
5% spandex)  
Crochet applique  
at front  
Easy slim fit  
through body  
High hip length

**Black  
Ivory  
Pink**

**\$68**



**Itzel  
4YRM260A**

Stretch Jersey  
(95% viscose/  
5% spandex)  
Crochet applique  
at front  
Easy slim fit  
through body  
High hip length

**Black  
Ivory  
Pink**

**\$68**



**Itzel  
4YRM260A**

Stretch Jersey  
(95% viscose/  
5% spandex)  
Crochet applique  
at front  
Easy slim fit  
through body  
High hip length

**Black  
Ivory  
Pink**

**\$68**





**Cecelia  
4YRM262A**

Stretch Jersey  
(95% viscose/  
5% spandex)  
Cotton corded eyelet  
(100% cotton)  
at yokes & sleeve  
3/4 length bell sleeve  
Easy slim fit at body  
Hip length  
with curved hem

**Black  
Ivory**

**\$108**



**Cecelia  
4YRM262A**

Stretch Jersey  
(95% viscose/  
5% spandex)  
Cotton corded eyelet  
(100% cotton)  
at yokes & sleeve  
3/4 length bell sleeve  
Easy slim fit at body  
Hip length  
with curved hem

**Black  
Ivory**

**\$108**



**Kensley  
4YRM560A**

Cotton corded eyelet  
(100% cotton)  
Slub voile contrast & lining  
(91%Lyocell/9%Linen)  
Zip closure at side body  
Slim fit with flared leg  
Full length  
(31" Inseam)

**Black  
Ivory**

**\$158**





**Kensley  
4YRM560A**

-----  
Cotton corded eyelet  
(100% cotton)  
Slub voile contrast & lining  
(91%Lyocell/9%Linen)  
Zip closure at side body  
Slim fit with flared leg  
Full length  
(31" Inseam)

**Black  
Ivory**

**\$158**



**Journi  
4YRM660A**

-----  
Cotton corded eyelet  
(100% cotton)  
Slub voile contrast & lining  
(91%Lyocell/9%Linen)  
Smocked bodice  
Bell sleeve  
Voluminous skirt  
with gussets  
Above the knee length  
(35.5" HPS)

**Black  
Ivory**

**\$208**



**Journi  
4YRM660A**

-----  
Cotton corded eyelet  
(100% cotton)  
Slub voile contrast & lining  
(91%Lyocell/9%Linen)  
Smocked bodice  
Bell sleeve  
Voluminous skirt  
with gussets  
Above the knee length  
(35.5" HPS)

**Black  
Ivory**

**\$208**





Sunshine  
Day





**Yaretzi  
4YYU270A**

Washed crepe de chine  
(100% silk)  
Buttons at center front  
Long sleeve with tab to  
adjust length  
Straight hem  
with side slits  
Hip length

**Beige  
Orange**

**\$148**



**Yaretzi  
4YYU270A**

Washed crepe de chine  
(100% silk)  
Buttons at center front  
Long sleeve with tab to  
adjust length  
Straight hem  
with side slits  
Hip length

**Beige  
Orange**

**\$148**



**Meredith  
4YYU272A**

Matte jersey  
(96% polyester/  
4% spandex)  
Slim, easy fit body  
3/4 sleeve with cuff  
High hip length  
with curved hem

**Beige  
Orange**

**\$68**



**Meredith  
4YYU272A**

Matte jersey  
(96% polyester/  
4% spandex)  
Slim, easy fit body  
3/4 sleeve  
with cuff  
High hip length  
with curved hem

**Beige  
Orange**

**\$68**



**Oaklyn  
4YYU570A**

Matte jersey  
(96% polyester/  
4% spandex)  
Elastic at waist  
High waist  
(9.25" rise)  
Slim fit  
with flared leg  
Full length  
(31" inseam)

**Beige  
Orange**

**\$78**



**Oaklyn  
4YYU570A**

Matte jersey  
(96% polyester/  
4% spandex)  
Elastic at waist  
High waist  
(9.25" rise)  
Slim fit  
with flared leg  
Full length  
(31" inseam)

**Beige  
Orange**

**\$78**







**Sloan**  
**4YYU670A**

Matte jersey  
(96% polyester/  
4% spandex)  
Collar with mid length  
placket with buttons  
Pockets at hips  
Long sleeve with wide cuff  
Tie belt at waist  
Above the knee length  
(35.5" HPS)  
Deep hem included  
to adjust length

**Beige**  
**Orange**

**\$118**

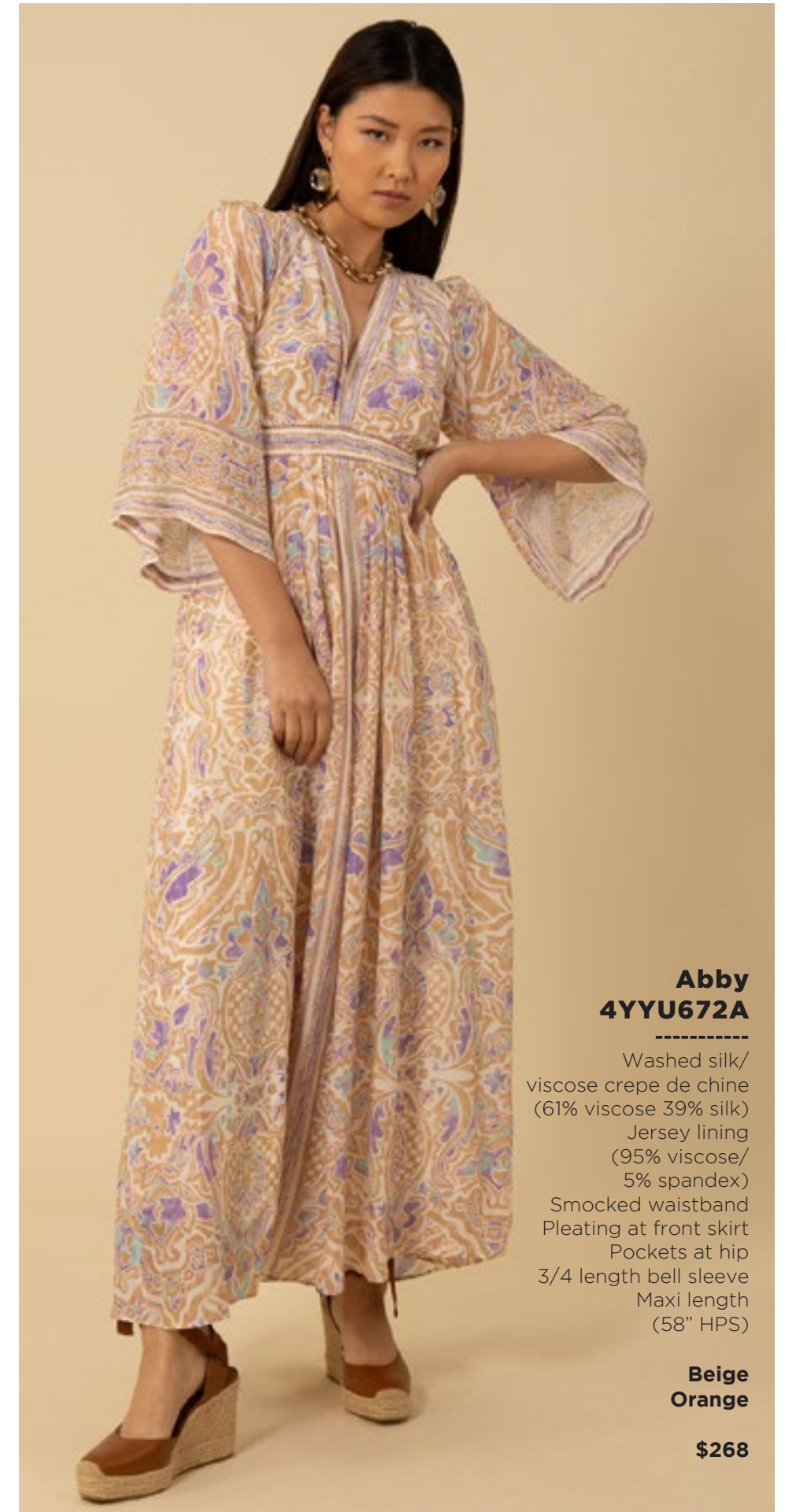


**Sloan**  
**4YYU670A**

Matte jersey  
(96% polyester/  
4% spandex)  
Collar with mid length  
placket with buttons  
Pockets at hips  
Long sleeve with wide cuff  
Tie belt at waist  
Above the knee length  
(35.5" HPS)  
Deep hem included  
to adjust length

**Beige**  
**Orange**

**\$118**



**Abby**  
**4YYU672A**

Washed silk/  
viscose crepe de chine  
(61% viscose 39% silk)  
Jersey lining  
(95% viscose/  
5% spandex)  
Smocked waistband  
Pleating at front skirt  
Pockets at hip  
3/4 length bell sleeve  
Maxi length  
(58" HPS)

**Beige**  
**Orange**

**\$268**





**Abby**  
**4YYU672A**

Washed silk/  
viscose crepe de chine  
(61% viscose 39% silk)  
Jersey lining  
(95% viscose/  
5% spandex)  
Smocked waistband  
Pleating at front skirt  
Pockets at hip  
3/4 length bell sleeve  
Maxi length  
(58" HPS)

**Beige**  
**Orange**

**\$268**

**Davina**  
**4YYU674A**

Lightweight washed linen  
(100% linen)  
Challis lining  
(100% viscose)  
Belt with woven buckle  
Buttons at front body  
(functional at top &  
bottom, stationary  
through waist/hip)  
Invisible zipper at  
back body  
3/4 length straight sleeve  
Loop trim at neck & sleeve  
Ruffle tier at hem  
Above the knee  
(35.5" HPS)

**Beige**  
**Orange**

**\$178**





**Davina  
4YYU674A**

-----  
Lightweight washed linen  
(100% linen)  
Challis lining  
(100% viscose)  
Belt with woven buckle  
Buttons at front body  
(functional at top &  
bottom, stationary  
through waist/hip)  
Invisible zipper at  
back body  
3/4 length straight sleeve  
Loop trim at neck & sleeve  
Ruffle tier at hem  
Above the knee  
(35.5" HPS)

**Beige  
Orange**

**\$178**



**Davina  
4YYU674M  
(Ankle Length)**

-----  
Lightweight washed linen  
(100% linen)  
Challis lining  
(100% viscose)  
Belt with woven buckle  
Buttons at front body  
(functional at top &  
bottom, stationary  
through waist/hip)  
Invisible zipper at  
back body  
3/4 length straight  
sleeve  
Loop trim at neck  
& sleeve  
Ruffle tier at hem  
Ankle length  
(52" HPS)

**Beige  
Orange**

**\$208**



**Davina  
4YYU674M  
(Ankle Length)**

-----  
Lightweight washed linen  
(100% linen)  
Challis lining  
(100% viscose)  
Belt with woven buckle  
Buttons at front body  
(functional at top &  
bottom, stationary  
through waist/hip)  
Invisible zipper at  
back body  
3/4 length straight sleeve  
Loop trim at neck & sleeve  
Ruffle tier at hem  
Ankle length  
(52" HPS)

**Beige  
Orange**

**\$208**





This book is a presentation of a selection of Hale Bob product and is correct at time of publication.

To view the entire collection of products including updates and additions. You can view product line sheets at [halebob.com](http://halebob.com) by logging into the "Merchant" section of our website.

Prices and products posted in this book are current at time of publication but are subject to change.

Sales Director  
East Coast  
South

Sales Executive  
Latin America  
West Coast

Sales Executive  
Southwest  
Midwest

Cathy Cooley  
310-963-2463  
[cathy@halebob.com](mailto:cathy@halebob.com)

Isabela Peralta  
323-394-1739  
[isabela@halebob.com](mailto:isabela@halebob.com)

Tracy Holden  
214-454-1176  
[tracy@halebob.com](mailto:tracy@halebob.com)

**For Marketing & Press Inquiries:**

Marianna Gunther  
[marianna@halebob.com](mailto:marianna@halebob.com)

# HALE BOB

LOS ANGELES

