



HALE BOB

LOS ANGELES

Season 11



Natural Wonders



**Leilani
3YAE210A**

Washed crepe de chine
(100% silk)
Buttons at front placket
Shirring at front yoke
Long sleeve
with smocked cuff
Low hip length
with curved hem

**Ivory
Pink
Yellow**

\$138



**Leilani
3YAE210A**

Washed crepe de chine
(100% silk)
Buttons at front placket
Shirring at front yoke
Long sleeve
with smocked cuff
Low hip length
with curved hem

**Ivory
Pink
Yellow**

\$138



**Leilani
3YAE210A**

Washed crepe de chine
(100% silk)
Buttons at front placket
Shirring at front yoke
Long sleeve
with smocked cuff
Low hip length
with curved hem

**Ivory
Pink
Yellow**

\$138

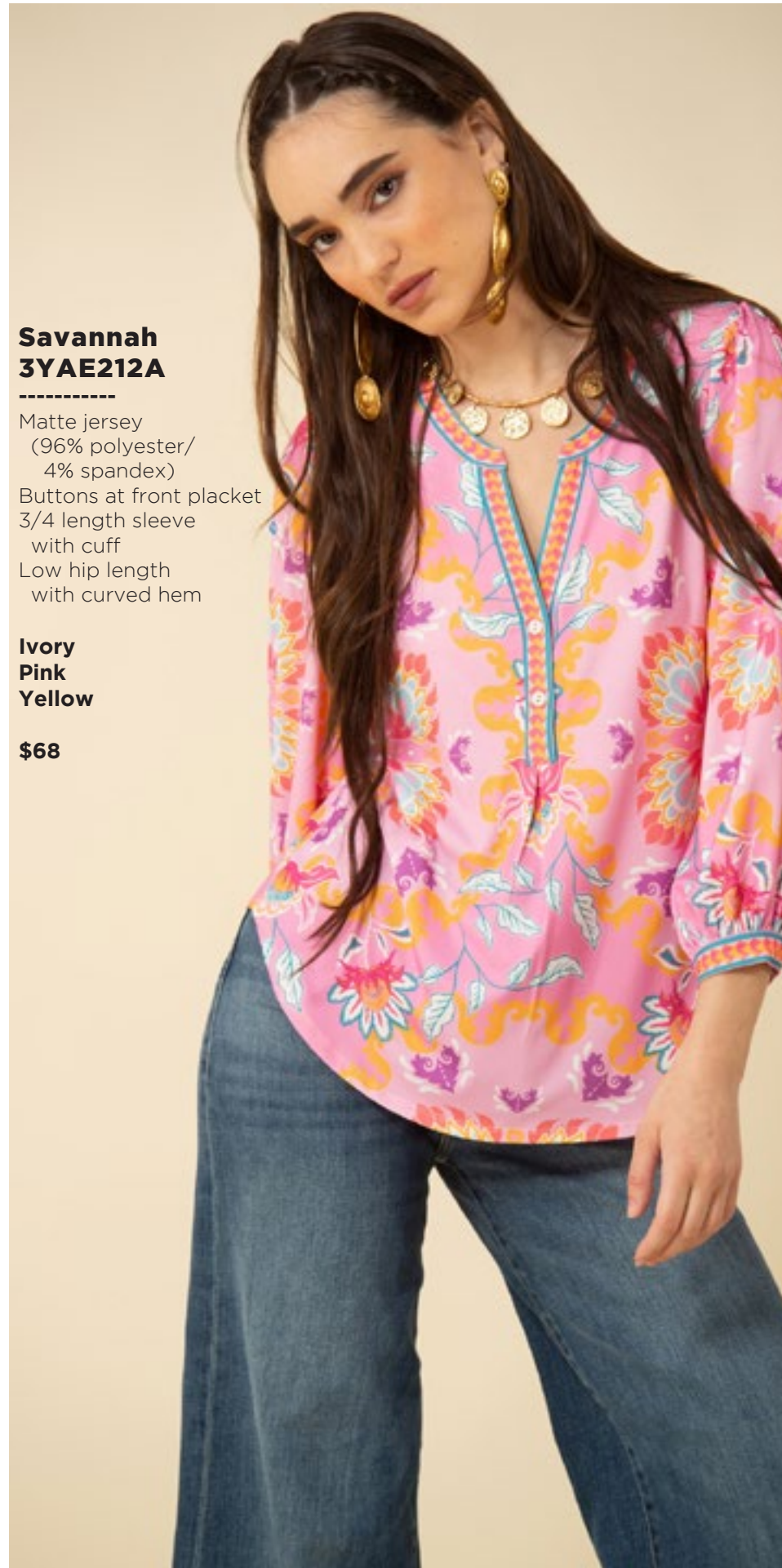


**Savannah
3YAE212A**

Matte jersey
(96% polyester/
4% spandex)
Buttons at front placket
3/4 length sleeve
with cuff
Low hip length
with curved hem

**Ivory
Pink
Yellow**

\$68



**Savannah
3YAE212A**

Matte jersey
(96% polyester/
4% spandex)
Buttons at front placket
3/4 length sleeve
with cuff
Low hip length
with curved hem

**Ivory
Pink
Yellow**

\$68



**Savannah
3YAE212A**

Matte jersey
(96% polyester/
4% spandex)
Buttons at front placket
3/4 length sleeve
with cuff
Low hip length
with curved hem

**Ivory
Pink
Yellow**

\$68

**Madelyn
3YAE510A**

Matte jersey
(96% polyester/
4% spandex)
Foldover waistband
Slim fit leg with slight flare
Full length
(31" inseam)

**Ivory
Pink
Yellow**

\$78



**Madelyn
3YAE510A**

Matte jersey
(96% polyester/
4% spandex)
Foldover waistband
Slim fit leg with slight flare
Full length
(31" inseam)

**Ivory
Pink
Yellow**

\$78



**Madelyn
3YAE510A**

Matte jersey
(96% polyester/
4% spandex)
Foldover waistband
Slim fit leg with slight flare
Full length
(31" inseam)

**Ivory
Pink
Yellow**

\$78



Bella
3YAE610A

Matte jersey
(96% polyester/
4% spandex)
Mesh lining
(95% nylon/8% spandex)
Keyhole at back neck
with button
Slim easy fit
Above the knee length
(35.5" HPS)

Ivory
Pink
Yellow

\$88



Bella
3YAE610A

Matte jersey
(96% polyester/
4% spandex)
Mesh lining
(95% nylon/8% spandex)
Keyhole at back neck
with button
Slim easy fit
Above the knee length
(35.5" HPS)

Ivory
Pink
Yellow

\$88



Bella
3YAE610A

Matte jersey
(96% polyester/
4% spandex)
Mesh lining
(95% nylon/8% spandex)
Keyhole at back neck
with button
Slim easy fit
Above the knee length
(35.5" HPS)

Ivory
Pink
Yellow

\$88





**Skylar
3YAE612A**

Washed poplin
(100% Cotton)
Slim fit through waist
Smocked panel at back
bodice for comfort
Center back zipper
Flared skirt with pockets
Above the knee length
(35" HPS)

**Ivory
Pink
Yellow**

\$128



**Skylar
3YAE612A**

Washed poplin
(100% Cotton)
Slim fit through waist
Smocked panel at back
bodice for comfort
Center back zipper
Flared skirt with pockets
Above the knee length
(35" HPS)

**Ivory
Pink
Yellow**

\$128



**Skylar
3YAE612A**

Washed poplin
(100% Cotton)
Slim fit through waist
Smocked panel at back
bodice for comfort
Center back zipper
Flared skirt with pockets
Above the knee length
(35" HPS)

**Ivory
Pink
Yellow**

\$128



**Genesis
3YAE614A**

Matte jersey
(96% polyester/
4% spandex)
Mesh lining
(95% nylon/8% spandex)
Slim fit through bodice
A-line skirt
with pleat at waist
3/4 balloon sleeve
with cuff
Below the knee length
(41" HPS)

**Ivory
Pink
Yellow**

\$108



**Genesis
3YAE614A**

Matte jersey
(96% polyester/
4% spandex)
Mesh lining
(95% nylon/8% spandex)
Slim fit through bodice
A-line skirt
with pleat at waist
3/4 balloon sleeve
with cuff
Below the knee length
(41" HPS)

**Ivory
Pink
Yellow**

\$108



**Genesis
3YAE614A**

Matte jersey
(96% polyester/
4% spandex)
Mesh lining
(95% nylon/8% spandex)
Slim fit through bodice
A-line skirt
with pleat at waist
3/4 balloon sleeve
with cuff
Below the knee length
(41" HPS)

**Ivory
Pink
Yellow**

\$108



Sophie
3YAE616A

Washed Georgette
(100% Rayon)
Challis lining
(100% Viscose)
Buttons at Front body
Trim at arm
Balloon sleeve
with smocked cuff
Voluminous tier at hem
Self belt
Maxi length (58" HPS)

Ivory
Pink
Yellow

\$198



Sophie
3YAE616A

Washed Georgette
(100% Rayon)
Challis lining
(100% Viscose)
Buttons at Front body
Trim at arm
Balloon sleeve
with smocked cuff
Voluminous tier at hem
Self belt
Maxi length (58" HPS)

Ivory
Pink
Yellow

\$198



Sophie
3YAE616A

Washed Georgette
(100% Rayon)
Challis lining
(100% Viscose)
Buttons at Front body
Trim at arm
Balloon sleeve
with smocked cuff
Voluminous tier at hem
Self belt
Maxi length (58" HPS)

Ivory
Pink
Yellow

\$198



**Kennedy
3YAE710A**

Jacquard Sweater
(100% Cotton)
Shawl collar,
fringe at edges
Pockets at hips
Wrap body with belt
Buttons at front
for closure option
Low hip length
(28" HPS)

**Blue
Ivory
Pink**

\$88



**Kennedy
3YAE710A**

Jacquard Sweater
(100% Cotton)
Shawl collar,
fringe at edges
Pockets at hips
Wrap body with belt
Buttons at front
for closure option
Low hip length
(28" HPS)

**Blue
Ivory
Pink**

\$88



**Kennedy
3YAE710A**

Jacquard Sweater
(100% Cotton)
Shawl collar,
fringe at edges
Pockets at hips
Wrap body with belt
Buttons at front
for closure option
Low hip length
(28" HPS)

**Blue
Ivory
Pink**

\$88





**Valeria
3YAE910A**

Jacquard Knit Blanket
(100% Cotton)
Size: 45" x 72"

**Blue
Ivory
Pink**

\$88



**Valeria
3YAE910A**

Jacquard Knit Blanket
(100% Cotton)
Size: 45" x 72"

**Blue
Ivory
Pink**

\$88



**Valeria
3YAE910A**

Jacquard Knit Blanket
(100% Cotton)
Size: 45" x 72"

**Blue
Ivory
Pink**

\$88



Limited
Edition
Denim



Blake
ODEN510A

Made in the USA
Cotton stretch denim
High waisted fit
(12 3/8" rise including
waistband)
Wide leg with flare
Stitched pin tuck
Side pockets at front
Patch pockets at back
Shipped with 33" inseam
Deep hem to adjust length

Black
Light blue wash
Dark blue wash
White

\$118



Blake
ODEN510A

Made in the USA
Cotton stretch denim
High waisted fit
(12 3/8" rise including
waistband)
Wide leg with flare
Stitched pin tuck
Side pockets at front
Patch pockets at back
Shipped with 33" inseam
Deep hem to adjust length

Black
Light blue wash
Dark blue wash
White

\$118





Blake
ODEN510A

Made in the USA
Cotton stretch denim
High waisted fit
(12 3/8" rise including
waistband)
Wide leg with flare
Stitched pin tuck
Side pockets at front
Patch pockets at back
Shipped with 33" inseam
Deep hem to adjust length

Black
Light blue wash
Dark blue wash
White

\$118



Blake
ODEN510A

Made in the USA
Cotton stretch denim
High waisted fit
(12 3/8" rise including
waistband)
Wide leg with flare
Stitched pin tuck
Side pockets at front
Patch pockets at back
Shipped with 33" inseam
Deep hem to adjust length

Black
Light blue wash
Dark blue wash
White

\$118



Desert Light





**Sadie
3YDT220A**

Washed Voile
(30% silk/70% cotton)
Jersey cami lining
(95% viscose/5% spandex)
Ruffle at neckline & wrist
Long sleeve, low hip length
with curved hem

\$108

**3YDT220B
(BEADED)**

Hand beading
on neckline

\$128

**Beige
Pink
Teal**



**Sadie
3YDT220A**

Washed Voile
(30% silk/70% cotton)
Jersey cami lining
(95% viscose/5% spandex)
Ruffle at neckline & wrist
Long sleeve, low hip length
with curved hem

\$108

**3YDT220B
(BEADED)**

Hand beading
on neckline

\$128

**Beige
Pink
Teal**



**Sadie
3YDT220A**

Washed Voile
(30% silk/70% cotton)
Jersey cami lining
(95% viscose/5% spandex)
Ruffle at neckline & wrist
Long sleeve, low hip length
with curved hem

\$108

**3YDT220B
(BEADED)**

Hand beading
on neckline

\$128

**Beige
Pink
Teal**

Natalia
3YDT222A

Washed crepe de chine
(100% silk)
Buttons at front body
Smocked yoke detail
at front
Long sleeve
with smocked cuff
Low hip length
with cuded hem

Beige
Pink
Teal

\$148



Quinn
3YDT520A

Washed twill
(55% viscose/
45% rayon)
Slim/straight leg
Flat front waistband,
smocked at back
for pull-on fit
Tie belt at wiast
Full length
(30" Inseam)

Beige
Pink
Teal

\$88

Natalia
3YDT222A

Washed crepe de chine
(100% silk)
Buttons at front body
Smocked yoke detail
at front
Long sleeve
with smocked cuff
Low hip length
with cuded hem

Beige
Pink
Teal

\$148



Quinn
3YDT520A

Washed twill
(55% viscose/
45% rayon)
Slim/straight leg
Flat front waistband,
smocked at back
for pull-on fit
Tie belt at wiast
Full length
(30" Inseam)

Beige
Pink
Teal

\$88

Natalia
3YDT222A

Washed crepe de chine
(100% silk)
Buttons at front body
Smocked yoke detail
at front
Long sleeve
with smocked cuff
Low hip length
with cuded hem

Beige
Pink
Teal

\$148



Quinn
3YDT520A

Washed twill
(55% viscose/
45% rayon)
Slim/straight leg
Flat front waistband,
smocked at back
for pull-on fit
Tie belt at wiast
Full length
(30" Inseam)

Beige
Pink
Teal

\$88



**Caroline
3YDT620A**

Chiffon
(100% polyester)
Smocked and ruffle
at neck
Short easy sleeve
Tiered voluminous skirt
with slit at lower tiers
Ankle length
with slight hi/low
(49" HPS at front,
52" at back)

**Beige
Pink
Teal**

\$128



**Caroline
3YDT620A**

Chiffon
(100% polyester)
Smocked and ruffle
at neck
Short easy sleeve
Tiered voluminous skirt
with slit at lower tiers
Ankle length
with slight hi/low
(49" HPS at front,
52" at back)

**Beige
Pink
Teal**

\$128



**Caroline
3YDT620A**

Chiffon
(100% polyester)
Smocked and ruffle
at neck
Short easy sleeve
Tiered voluminous skirt
with slit at lower tiers
Ankle length
with slight hi/low
(49" HPS at front,
52" at back)

**Beige
Pink
Teal**

\$128



**Allison
3YDT622A**

Washed chiffon
(70% rayon/30% silk)
Challis lining
(100% Viscose)
Long sleeve
with smocked cuff
Smocking at waist
Pockets at hips
Tier at lower skirt
Above the knee
(35.5" HPS)

**Beige
Pink
Teal**

\$148



**Allison
3YDT622A**

Washed chiffon
(70% rayon/30% silk)
Challis lining
(100% Viscose)
Long sleeve
with smocked cuff
Smocking at waist
Pockets at hips
Tier at lower skirt
Above the knee
(35.5" HPS)

**Beige
Pink
Teal**

\$148



**Allison
3YDT622A**

Washed chiffon
(70% rayon/30% silk)
Challis lining
(100% Viscose)
Long sleeve
with smocked cuff
Smocking at waist
Pockets at hips
Tier at lower skirt
Above the knee
(35.5" HPS)

**Beige
Pink
Teal**

\$148



**Allison
3YDT622M**

Washed chiffon
(70% rayon/30% silk)
Challis lining
(100% Viscose)
Long sleeve
with smocked cuff
Smocking at waist
Pockets at hips
Tier at lower skirt
Maxi length
(58" HPS)

**Beige
Pink
Teal**

\$188



**Allison
3YDT622M**

Washed chiffon
(70% rayon/30% silk)
Challis lining
(100% Viscose)
Long sleeve
with smocked cuff
Smocking at waist
Pockets at hips
Tier at lower skirt
Maxi length
(58" HPS)

**Beige
Pink
Teal**

\$188



Allison
3YDT622M

Washed chiffon
(70% rayon/30% silk)
Challis lining
(100% Viscose)
Long sleeve
with smocked cuff
Smocking at waist
Pockets at hips
Tier at lower skirt
Maxi length
(58" HPS)

Beige
Pink
Teal

\$188





**Gabriella
3YDT624A**

Matte jersey
(96% polyester/
4% spandex)
Mesh lining
(95% nylon/
8% spandex)
Pleat at CF under placket
Pockets at hips
Voluminous 3/4 sleeve
withcuff at opening
Deep hem added
for length
Above the knee
(35.5" HPS)

**Beige
Pink
Teal**

\$108



**Gabriella
3YDT624A**

Matte jersey
(96% polyester/
4% spandex)
Mesh lining
(95% nylon/
8% spandex)
Pleat at CF under placket
Pockets at hips
Voluminous 3/4 sleeve
withcuff at opening
Deep hem added
for length
Above the knee
(35.5" HPS)

**Beige
Pink
Teal**

\$108



**Gabriella
3YDT624A**

Matte jersey
(96% polyester/
4% spandex)
Mesh lining
(95% nylon/
8% spandex)
Pleat at CF under placket
Pockets at hips
Voluminous 3/4 sleeve
withcuff at opening
Deep hem added
for length
Above the knee
(35.5" HPS)

**Beige
Pink
Teal**

\$108



**Gabriella
3YDT624D**

Matte jersey
(96% polyester/
4% spandex)

Mesh lining
(95% nylon/
8% spandex)

Pleat at CF under placket

Pockets at hips

Voluminous 3/4 sleeve
withcuff at opening

Deep hem added
for length

Below the knee
(41" HPS)

**Beige
Teal**

\$118



**Gabriella
3YDT624D**

Matte jersey
(96% polyester/
4% spandex)

Mesh lining
(95% nylon/
8% spandex)

Pleat at CF under placket

Pockets at hips

Voluminous 3/4 sleeve
withcuff at opening

Deep hem added
for length

Below the knee
(41" HPS)

**Beige
Teal**

\$118

Serenity
3YDT626A

Washed twill
(55% viscose/
45% rayon)
Long flared sleeve
Borders at sides
with high slit
Maxi length
(57.5" HPS)

Beige
Pink
Teal

\$128



Serenity
3YDT626A

Washed twill
(55% viscose/
45% rayon)
Long flared sleeve
Borders at sides
with high slit
Maxi length
(57.5" HPS)

Beige
Pink
Teal

\$128





Serenity
3YDT626A

Washed twill
(55% viscose/
45% rayon)
Long flared sleeve
Borders at sides
with high slit
Maxi length
(57.5" HPS)

Beige
Pink
Teal

\$128



Nevaeh
3YDT820A

Swim
(87% nylon/
13% spandex)
Fully lined
Ruffle at front &
back neck

Pink
Teal

\$78



Nevaeh
3YDT820A

Swim
(87% nylon/
13% spandex)
Fully lined
Ruffle at front &
back neck

Pink
Teal

\$78







Rock Candy



**Cora
3YKN230A**

Embroidered crinkle gauze
(100% rayon)
Challis lining at body
(100% viscose)
Buttons at top neckline
Long sleeve with cuff
Low hip length
with curved hem

**Black
Blue
Ivory
Fuchsia**

\$108

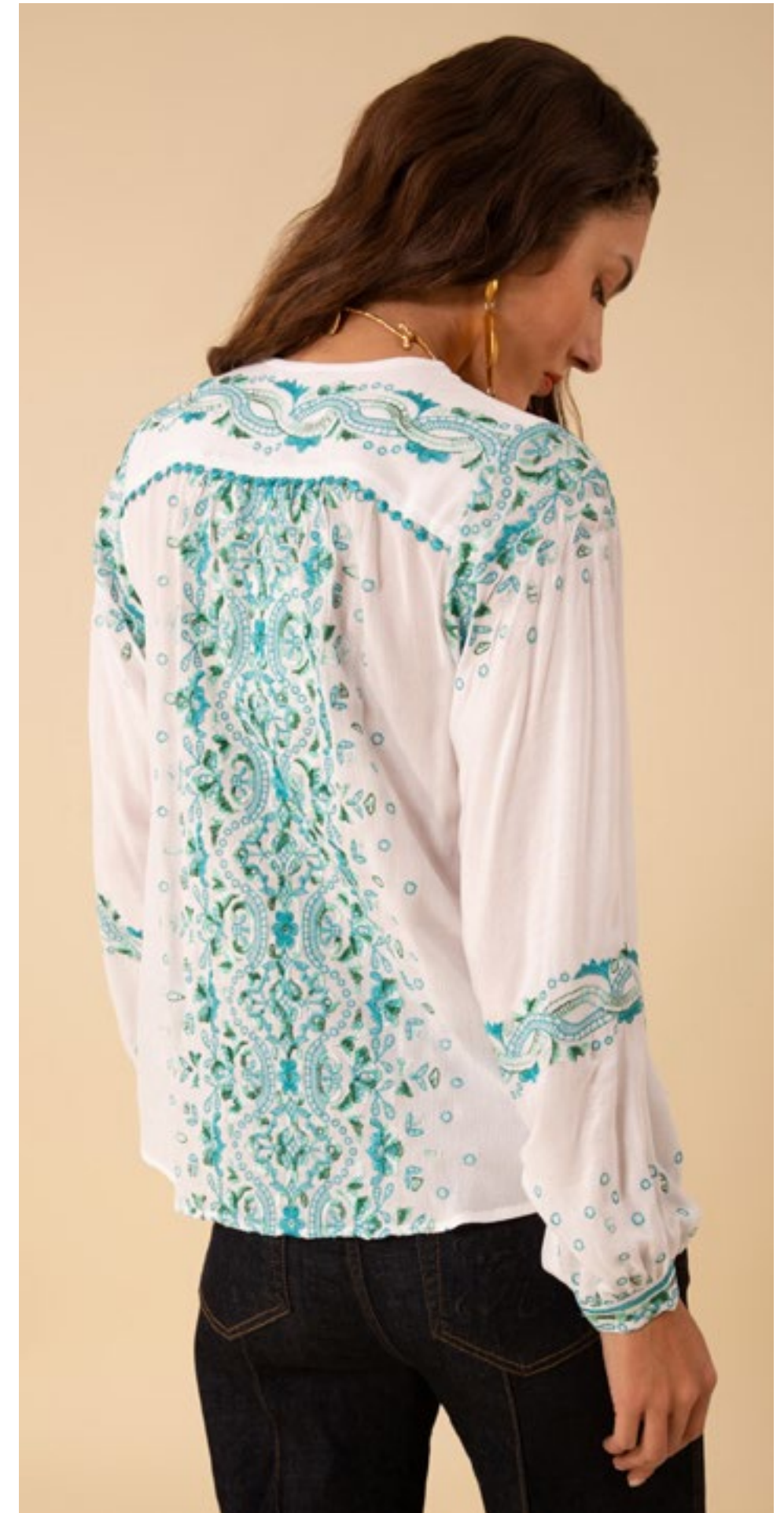


**Cora
3YKN230A**

Embroidered crinkle gauze
(100% rayon)
Challis lining at body
(100% viscose)
Buttons at top neckline
Long sleeve with cuff
Low hip length
with curved hem

**Black
Blue
Ivory
Fuchsia**

\$108





Cora
3YKN230A

Embroidered crinkle gauze
(100% rayon)
Challis lining at body
(100% viscose)
Buttons at top neckline
Long sleeve with cuff
Low hip length
with curved hem

Black
Blue
Ivory
Fuchsia

\$108



Cora
3YKN230A

Embroidered crinkle gauze
(100% rayon)
Challis lining at body
(100% viscose)
Buttons at top neckline
Long sleeve with cuff
Low hip length
with curved hem

Black
Blue
Ivory
Fuchsia

\$108



**Ariana
3YKN630A**

Embroidered crinkle gauze
(100% rayon)
Challis lining at body
(100% viscose)
Flutter sleeve
Pockets at hips
Tier at hem
Above the knee length
(35.5" HPS)

**Black
Blue
Ivory
Fuchsia**

\$118



**Ariana
3YKN630A**

Embroidered crinkle gauze
(100% rayon)
Challis lining at body
(100% viscose)
Flutter sleeve
Pockets at hips
Tier at hem
Above the knee length
(35.5" HPS)

**Black
Blue
Ivory
Fuchsia**

\$118



**Ariana
3YKN630A**

Embroidered crinkle gauze
(100% rayon)
Challis lining at body
(100% viscose)
Flutter sleeve
Pockets at hips
Tier at hem
Above the knee length
(35.5" HPS)

**Black
Blue
Ivory
Fuchsia**

\$118



Ariana
3YKN630A

Embroidered crinkle gauze
(100% rayon)
Challis lining at body
(100% viscose)
Flutter sleeve
Pockets at hips
Tier at hem
Above the knee length
(35.5" HPS)

Black
Blue
Ivory
Fuchsia

\$118



Emery
3YKN632A

Embroidered crinkle gauze
(100% rayon)
Challis lining at body
(100% viscose)
Easy fit, slim through
rib cage
Tiered, swingy fit at skirt
3/4 full sleeve with cuff
Above the knee
(35.5" HPS)

Black
Blue
Ivory
Fuchsia

\$148



Emery
3YKN632A

Embroidered crinkle gauze
(100% rayon)
Challis lining at body
(100% viscose)
Easy fit, slim through
rib cage
Tiered, swingy fit at skirt
3/4 full sleeve with cuff
Above the knee
(35.5" HPS)

Black
Blue
Ivory
Fuchsia

\$148



**Emery
3YKN632A**

Embroidered crinkle gauze
(100% rayon)
Challis lining at body
(100% viscose)
Easy fit, slim through
rib cage
Tiered, swingy fit at skirt
3/4 full sleeve with cuff
Above the knee
(35.5" HPS)

**Black
Blue
Ivory
Fuchsia**

\$148



**Emery
3YKN632A**

Embroidered crinkle gauze
(100% rayon)
Challis lining at body
(100% viscose)
Easy fit, slim through
rib cage
Tiered, swingy fit at skirt
3/4 full sleeve with cuff
Above the knee
(35.5" HPS)

**Black
Blue
Ivory
Fuchsia**

\$148



**Emery
3YKN632M**

Embroidered crinkle gauze
(100% rayon)
Challis lining at body
(100% viscose)
Easy fit, slim through
rib cage
Tiered, swingy fit at skirt
3/4 full sleeve with cuff
Maxi length (58" HPS)

**Black
Blue
Ivory
Fuchsia**

\$178



Emery
3YKN632M

Embroidered crinkle gauze
(100% rayon)
Challis lining at body
(100% viscose)
Easy fit, slim through
rib cage
Tiered, swingy fit at skirt
3/4 full sleeve with cuff
Maxi length (58" HPS)

Black
Blue
Ivory
Fuchsia

\$178



Emery
3YKN632M

Embroidered crinkle gauze
(100% rayon)
Challis lining at body
(100% viscose)
Easy fit, slim through
rib cage
Tiered, swingy fit at skirt
3/4 full sleeve with cuff
Maxi length (58" HPS)

Black
Blue
Ivory
Fuchsia

\$178

Emery
3YKN632M

Embroidered crinkle gauze
(100% rayon)
Challis lining at body
(100% viscose)
Easy fit, slim through
rib cage
Tiered, swingy fit at skirt
3/4 full sleeve with cuff
Maxi length (58" HPS)

Black
Blue
Ivory
Fuchsia

\$178





Garden Glory

Lydia
3YNG240A

Crepe de chine
(100% viscose)
Buttons at front body
Smocked yoke detail
at front
Long sleeve
with smocked cuff
Low hip length
with curved hem

Blue
Coral

\$88



Lydia
3YNG240A

Crepe de chine
(100% viscose)
Buttons at front body
Smocked yoke detail
at front
Long sleeve
with smocked cuff
Low hip length
with curved hem

Blue
Coral

\$88



Adeline
3YNG242A

Crepe de chine
(100% viscose)
Ruffles at neck & armholes
Low hip with curved hem

Blue
Coral

\$68



Adeline
3YNG242A

Crepe de chine
(100% viscose)
Ruffles at neck & armholes
Low hip with curved hem

Blue
Coral

\$68



**Eliza
3YNG440A**

Crepe de chine
(100% viscose)
Skirt is lined with print fabric
Smocked waistband
can be worn on the
waist or hip
Pockets at hips
Tiered voluminous fit
Length from top
waistband to hem:
30" (midi length)

**Blue
Coral**

\$88



**Eliza
3YNG440A**

Crepe de chine
(100% viscose)
Skirt is lined with print fabric
Smocked waistband
can be worn on the
waist or hip
Pockets at hips
Tiered voluminous fit
Length from top
waistband to hem:
30" (midi length)

**Blue
Coral**

\$88



**Piper
3YNG640A**

Matte jersey
(90% polyester/10%spandex)
Elastic with ties at waist
Long sleeve w/ smocked cuff
Gussets at skirt creates
voluminous swing fit
Above the knee length
(35.5" HPS)

**Blue
Coral**

\$118





Piper
3YNG640A

Matte jersey
(90% polyester/10%spandex)
Elastic with ties at waist
Long sleeve w/ smocked cuff
Gussets at skirt creates
voluminous swing fit
Above the knee length
(35.5" HPS)

Blue
Coral

\$118



Rylee
3YNG642A

Crepe de chine
(100% viscose)
Body is lined with print
Slim easy fit through body
with back zip
Pockets at hips
Button detail at front body
are functional towards hem
to adjust slit opening
Midi length (47" HPS)

Blue
Coral

\$118



**Rylee
3YNG642A**

Crepe de chine
(100% viscose)
Body is lined with print
Slim easy fit through body
with back zip
Pockets at hips
Button detail at front body
are functional towards hem
to adjust slit opening
Midi length (47" HPS)

**Blue
Coral**

\$118



**Peyton
3YNG644A**

Chiffon
(100% polyester)
Smocking & ruffle
at neck
Hook & eye hidden
at front neck
Elastic smocked waist
Flutter sleeve with ruffle
Tiered skirt with slit
at lower tiers
Ankle length
with hi/low hem
(49" at front,
52" at back)

**Blue
Coral**

\$128



**Peyton
3YNG644A**

Chiffon
(100% polyester)
Smocking & ruffle
at neck
Hook & eye hidden
at front neck
Elastic smocked waist
Flutter sleeve with ruffle
Tiered skirt with slit
at lower tiers
Ankle length
with hi/low hem
(49" at front,
52" at back)

**Blue
Coral**

\$128

A woman with long dark hair, wearing large gold earrings and a vibrant, long-sleeved dress with a pink-to-orange gradient and a patterned hem, stands on a wooden deck. The dress is blowing in the wind. She is looking towards the camera. The background features a lush garden with tall grasses, a pond, and a hillside covered in greenery and purple lavender flowers. A wooden structure is visible in the background on the left. The scene is brightly lit, suggesting a sunny day.

Sunrise
and
Shine

**Everleigh
3YRR250A**

Washed crepe de chine
(100% silk)
Ruffle at neckline
Buttons at front keyhole
Long sleeve
with elastic & ruffle
Low hip length
with curved hem

**Blue
Pink**

\$138



**Everleigh
3YRR250A**

Washed crepe de chine
(100% silk)
Ruffle at neckline
Buttons at front keyhole
Long sleeve
with elastic & ruffle
Low hip length
with curved hem

**Blue
Pink**

\$138



**Vivian
3YRR252A**

Washed twill
(55% viscose/45% rayon)
Rib knit neckband
Border detail at side body
High hip length

**Blue
Pink**

\$68



**Vivian
3YRR252A**

Washed twill
(55% viscose/45% rayon)
Rib knit neckband
Border detail at side body
High hip length

**Blue
Pink**

\$68



**Raelynn
3YRR550A**

Washed twill
(55% viscose/
45% rayon)
Smocked waistband
Pockets at hips
Easy straight fit
Full length leg
(31" Inseam)

**Blue
Pink**

\$88





**Raelynn
3YRR550A**

Washed twill
(55% viscose/
45% rayon)
Smocked waistband
Pockets at hips
Easy straight fit
Full length leg
(31" Inseam)

**Blue
Pink**

\$88

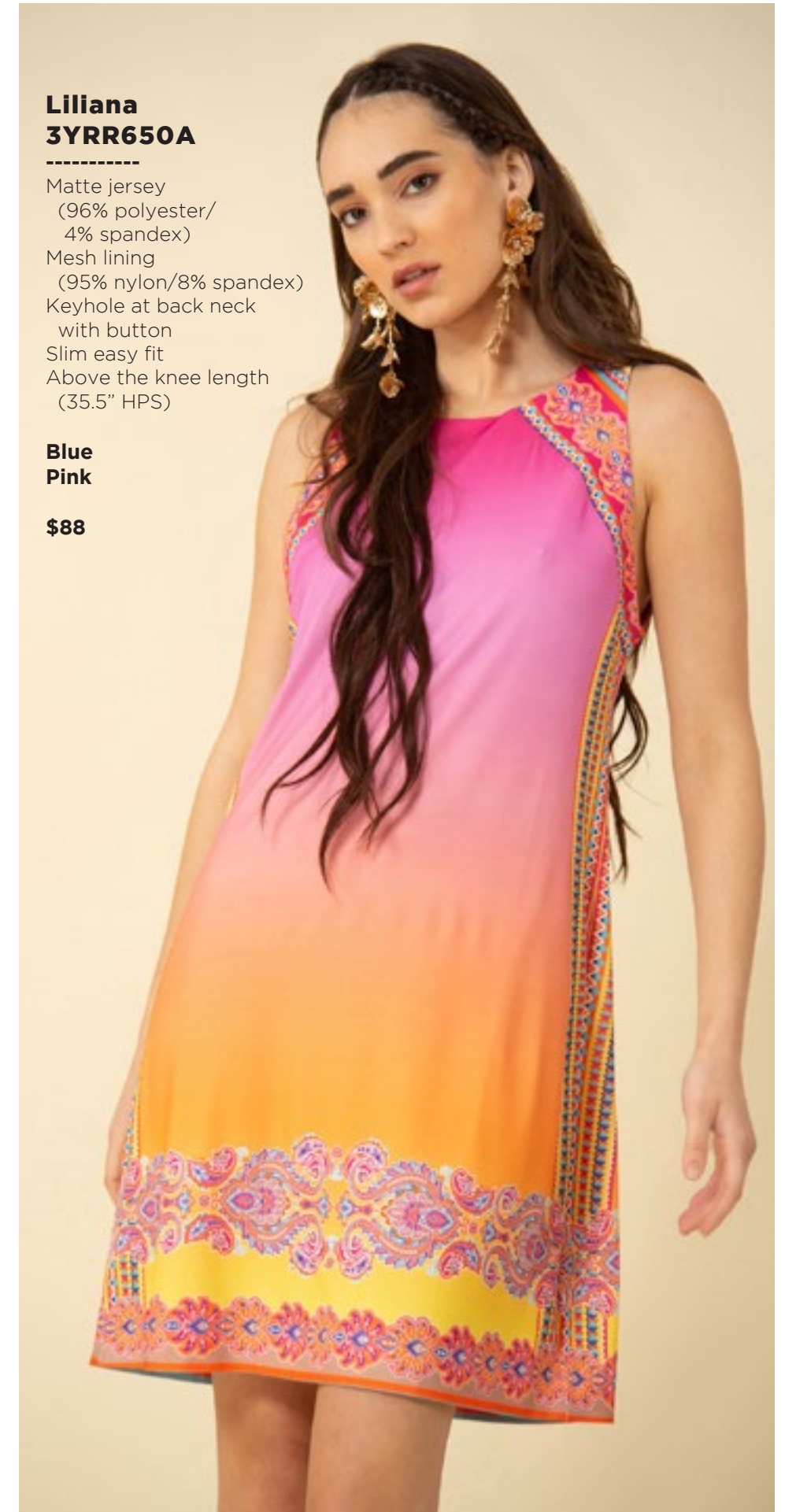


**Liliana
3YRR650A**

Matte jersey
(96% polyester/
4% spandex)
Mesh lining
(95% nylon/8% spandex)
Keyhole at back neck
with button
Slim easy fit
Above the knee length
(35.5" HPS)

**Blue
Pink**

\$88



**Liliana
3YRR650A**

Matte jersey
(96% polyester/
4% spandex)
Mesh lining
(95% nylon/8% spandex)
Keyhole at back neck
with button
Slim easy fit
Above the knee length
(35.5" HPS)

**Blue
Pink**

\$88



**Samantha
3YRR652A**

Matte jersey
(96% polyester/
4% spandex)
Shirring at front & back
body with tie
at center front neck
Dropped shoulder
Slim fit through body
with flounce hem
Midi length (47" HPS)

**Blue
Pink**

\$118





Ayla
3YRR654A

Washed chiffon
(70% rayon/30% silk)
Jersey lining
(95% viscose/5% spandex)
Elastic smocking at waist
Long sleeve
with smocked cuff
Tier at lower skirt
Above the knee length
(35.5" HPS)

Blue
Pink

\$138



Ayla
3YRR654A

Washed chiffon
(70% rayon/30% silk)
Jersey lining
(95% viscose/5% spandex)
Elastic smocking at waist
Long sleeve
with smocked cuff
Tier at lower skirt
Above the knee length
(35.5" HPS)

Blue
Pink

\$138



Ayla
3YRR654M

Washed chiffon
(70% rayon/30% silk)
Jersey lining
(95% viscose/5% spandex)
Elastic smocking at waist
Long sleeve
with smocked cuff
Tier at lower skirt
Maxi length
(58" HPS)

Blue
Pink

\$188



Ayla
3YRR654M

Washed chiffon
(70% rayon/30% silk)
Jersey lining
(95% viscose/5% spandex)
Elastic smocking at waist
Long sleeve
with smocked cuff
Tier at lower skirt
Maxi length
(58" HPS)

Blue
Pink

\$188

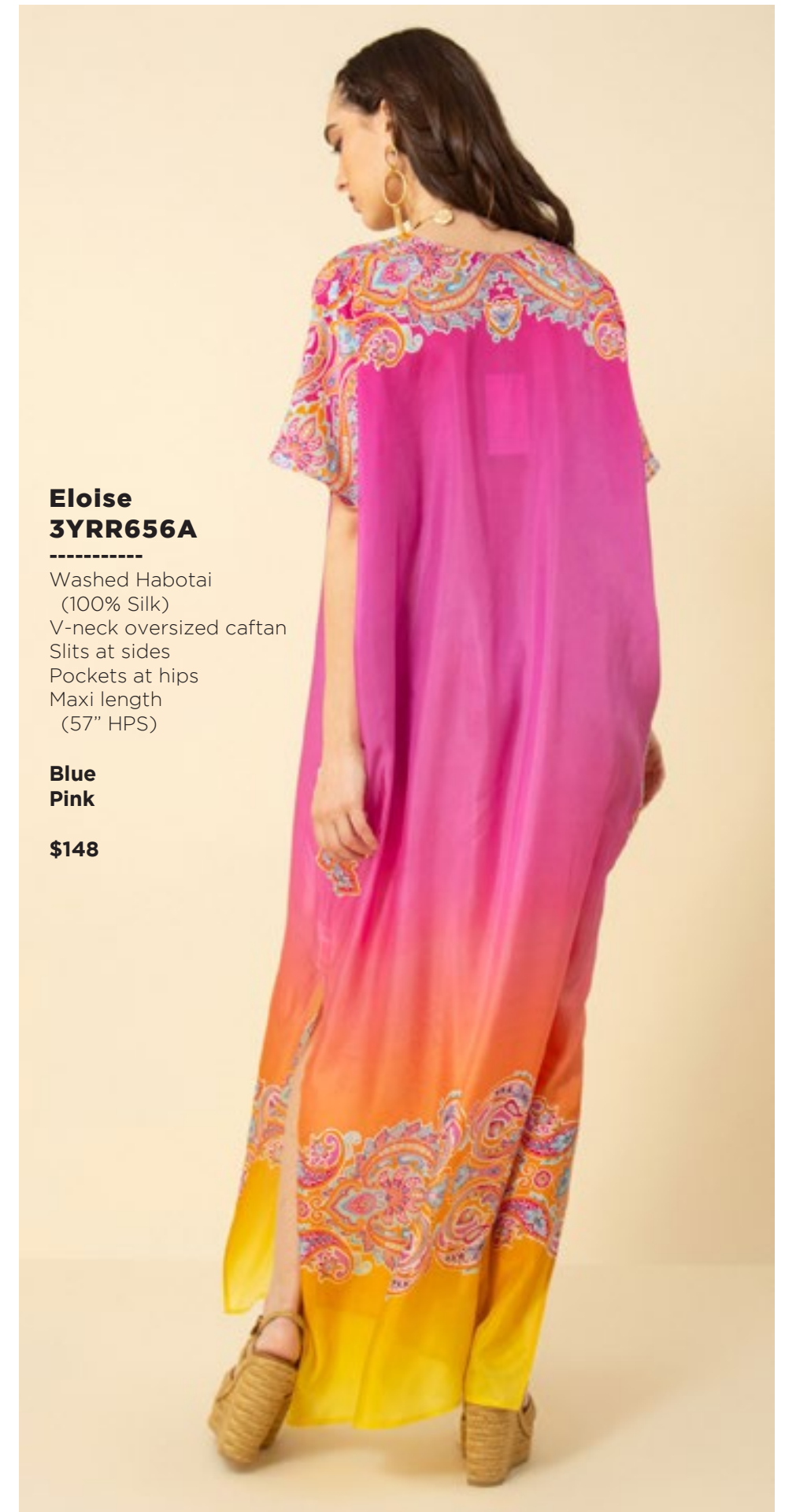


Eloise
3YRR656A

Washed Habotai
(100% Silk)
V-neck oversized caftan
Slits at sides
Pockets at hips
Maxi length
(57" HPS)

Blue
Pink

\$148



Eloise
3YRR656A

Washed Habotai
(100% Silk)
V-neck oversized caftan
Slits at sides
Pockets at hips
Maxi length
(57" HPS)

Blue
Pink

\$148

Madeline
3YRR850A

Swim
(87% nylon/13% spandex)
Fully lined
Ties around neck
or at bust for
strapless look

Blue
Pink

\$68

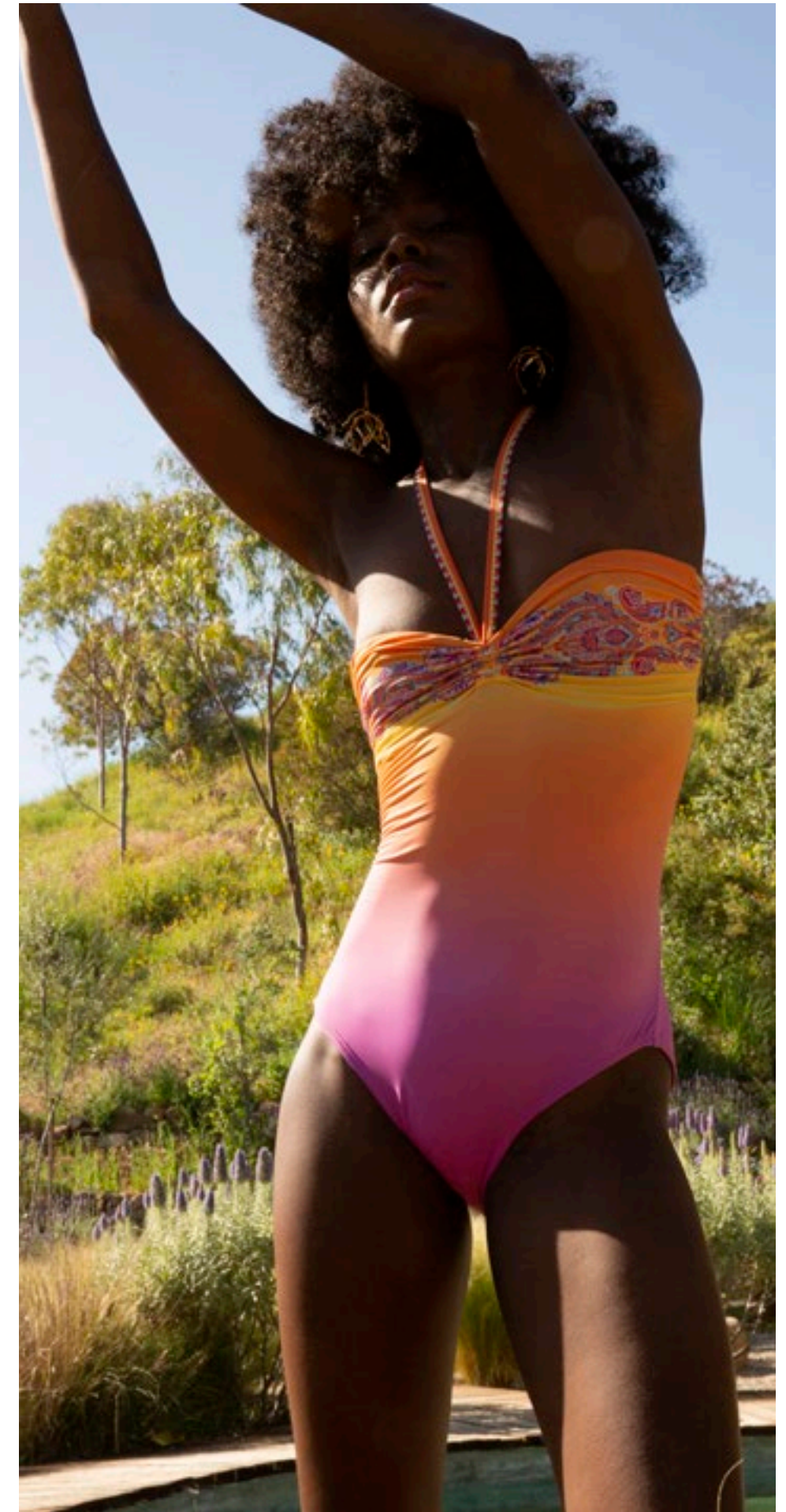


Madeline
3YRR850A

Swim
(87% nylon/
13% spandex)
Fully lined
Ties around neck
or at bust for
strapless look

Blue
Pink

\$68





Calm
Kaleidoscope



Lyla
3YSP260A

Washed Voile
(30% silk/70% cotton)
Jersey cami lining
(95% viscose/5% spandex)
Ruffle at neckline
Buttons at front keyhole
Long sleeve
with smocked cuff
Low hip length
with curved hem

Blue
Coral

\$88



Lyla
3YSP260A

Washed Voile
(30% silk/70% cotton)
Jersey cami lining
(95% viscose/5% spandex)
Ruffle at neckline
Buttons at front keyhole
Long sleeve
with smocked cuff
Low hip length
with curved hem

Blue
Coral

\$88

**Hadley
3YSP262A**

Washed Georgette
(100% Rayon)
Body is lined with challis
(100% Viscose)
Pintucks at front &
back body
Lace-up at front keyhole
Ruffle sleeve
Low hip length
with curved hem

**Blue
Coral**

\$88



**Hadley
3YSP262A**

Washed Georgette
(100% Rayon)
Body is lined with challis
(100% Viscose)
Pintucks at front &
back body
Lace-up at front keyhole
Ruffle sleeve
Low hip length
with curved hem

**Blue
Coral**

\$88





**Parker
3YSP560A**

Stretch Canvas
(97% cotton/
3% spandex)
High waist silhouette
Invisible side zip
Welt pocket at back
Slim fit through leg
with flare
Full length leg
(32" Inseam)

**Blue
Coral**

\$88



**Parker
3YSP560A**

Stretch Canvas
(97% cotton/
3% spandex)
High waist silhouette
Invisible side zip
Welt pocket at back
Slim fit through leg
with flare
Full length leg
(32" Inseam)

**Blue
Coral**

\$88



**Parker
3YSP560S**

Stretch Canvas
(97% cotton/
3% spandex)
High waist silhouette
Invisible side zip
Welt pocket at back
Slim fit through leg
with flare
Full length leg
(32" Inseam)

White

\$78



**Brielle
3YSP660A**

Matte jersey
(96% polyester/
4% spandex)
V-neck at front
Pockets at hips
7/8 length bell sleeve
Easy a-line body
Above the knee length
(35.5" HPS)

**Blue
Coral**

\$98



**Brielle
3YSP660A**

Matte jersey
(96% polyester/
4% spandex)
V-neck at front
Pockets at hips
7/8 length bell sleeve
Easy a-line body
Above the knee length
(35.5" HPS)

**Blue
Coral**

\$98



**Adalynn
3YSP662A**

Washed georgette
(100% Rayon)
Body is lined with challis
(100% Viscose)
Slim fit through bodice
Smocked panel at CB
with zipper for flexible fit
Short sleeve with pleating
Tiered swingy skirt
Above the knee length
(35"HPS)

**Blue
Coral**

\$108



**Adalynn
3YSP662A**

Washed georgette
(100% Rayon)
Body is lined with challis
(100% Viscose)
Slim fit through bodice
Smocked panel at CB
with zipper for flexible fit
Short sleeve with pleating
Tiered swiny skirt
Above the knee length
(35"HPS)

**Blue
Coral**

\$108

**Arya
3YSP664A**

Washed crepe de chine
(100% rayon)
Buttons at front body
Long sleeve
with tab to adjust
length to 3/4
Self belt included
Tier at hem
Maxi length (58" HPS)

**Blue
Coral**

\$148



**Arya
3YSP664A**

Washed crepe de chine
(100% rayon)
Buttons at front body
Long sleeve
with tab to adjust
length to 3/4
Self belt included
Tier at hem
Maxi length (58" HPS)

**Blue
Coral**

\$148



This book is a presentation of a selection of Hale Bob product and is correct at time of publication.

To view the entire collection of products including updates and additions. You can view product line sheets at halebob.com by logging into the "Merchant" section of our website.

Prices and products posted in this book are current at time of publication but are subject to change.

Sales Director

East Coast
South East
Puerto Rico
Canada
Majors

Cathy Cooley

310-963-2463
cathy@halebob.com

Sales Executive

Mexico
Central America
South America

Isabela Peralta

323-394-1739
isabela@halebob.com

Sales Executive

Midwest

Tracy Holden

214-454-1176
tracy@halebob.com

For Marketing & Press Inquiries:

Marianna Gunther
marianna@halebob.com

HALE BOB
LOS ANGELES

