



# HALE BOB

LOS ANGELES

Season 11



Natural Wonders



**Leilani  
3YAE210A**

Washed crepe de chine  
(100% silk)  
Buttons at front placket  
Shirring at front yoke  
Long sleeve  
with smocked cuff  
Low hip length  
with curved hem

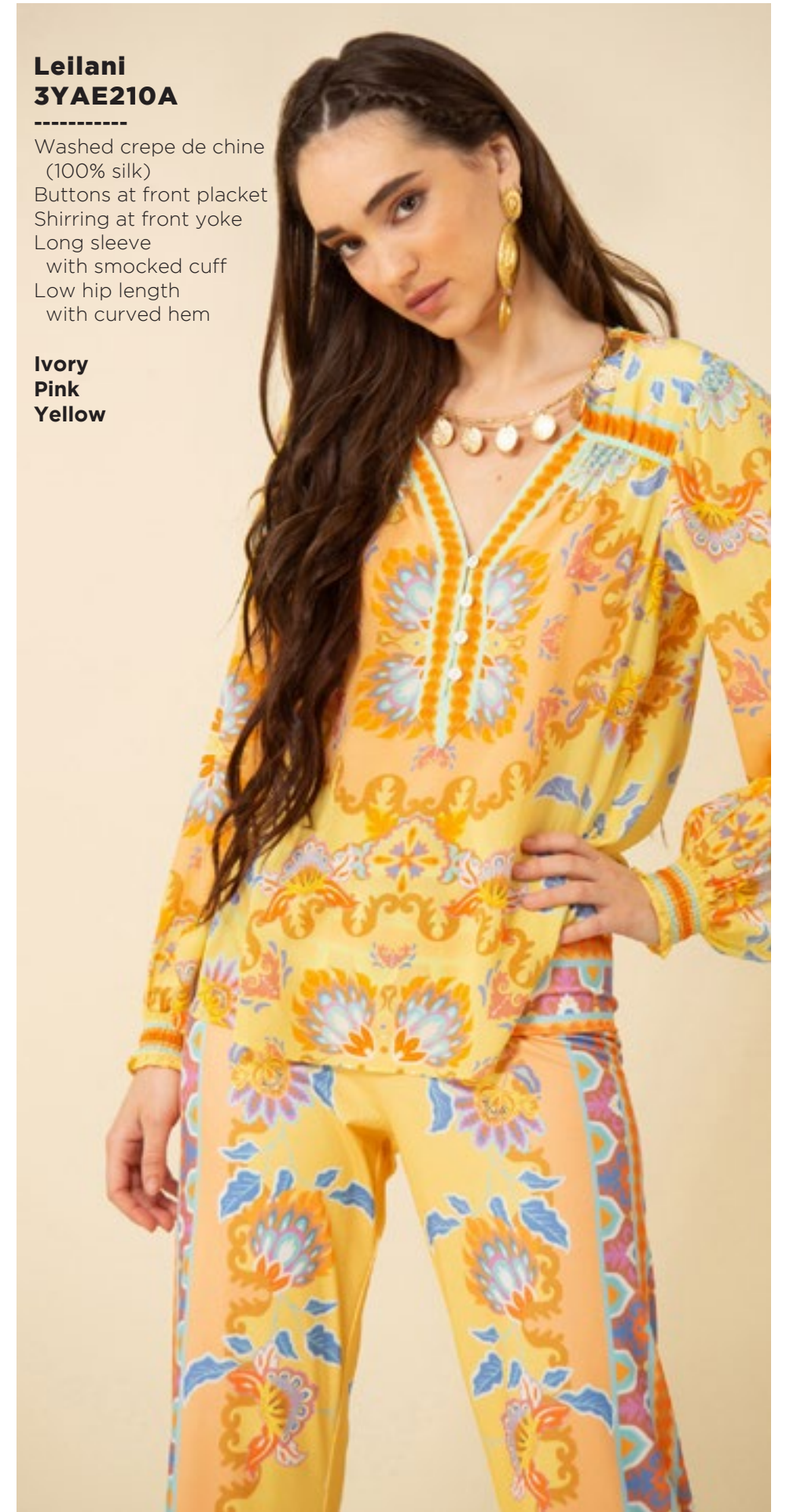
**Ivory  
Pink  
Yellow**



**Leilani  
3YAE210A**

Washed crepe de chine  
(100% silk)  
Buttons at front placket  
Shirring at front yoke  
Long sleeve  
with smocked cuff  
Low hip length  
with curved hem

**Ivory  
Pink  
Yellow**



**Leilani  
3YAE210A**

Washed crepe de chine  
(100% silk)  
Buttons at front placket  
Shirring at front yoke  
Long sleeve  
with smocked cuff  
Low hip length  
with curved hem

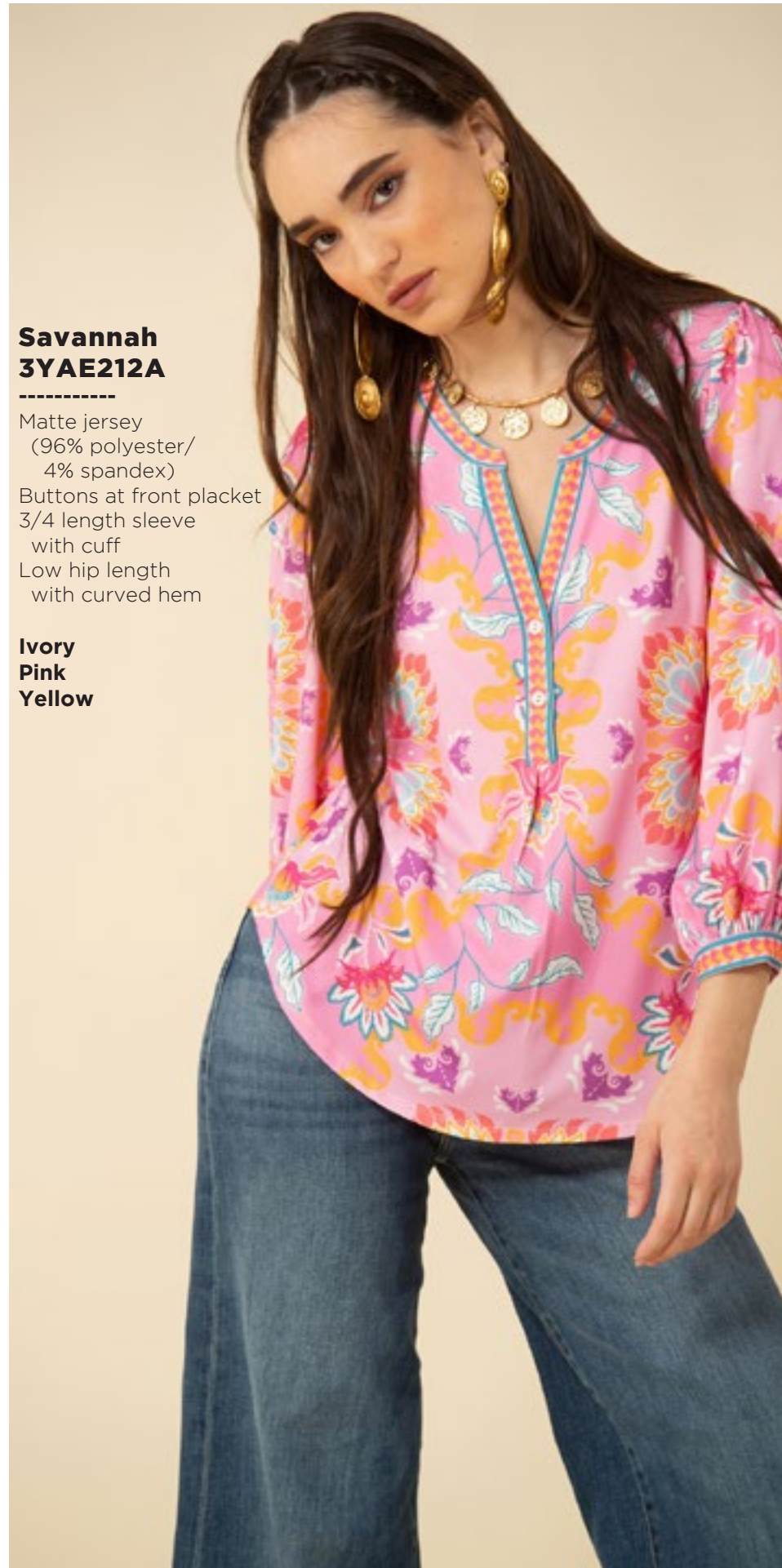
**Ivory  
Pink  
Yellow**



**Savannah  
3YAE212A**

-----  
Matte jersey  
(96% polyester/  
4% spandex)  
Buttons at front placket  
3/4 length sleeve  
with cuff  
Low hip length  
with curved hem

**Ivory  
Pink  
Yellow**



**Savannah  
3YAE212A**

-----  
Matte jersey  
(96% polyester/  
4% spandex)  
Buttons at front placket  
3/4 length sleeve  
with cuff  
Low hip length  
with curved hem

**Ivory  
Pink  
Yellow**



**Savannah  
3YAE212A**

-----  
Matte jersey  
(96% polyester/  
4% spandex)  
Buttons at front placket  
3/4 length sleeve  
with cuff  
Low hip length  
with curved hem

**Ivory  
Pink  
Yellow**

**Madelyn  
3YAE510A**

Matte jersey  
(96% polyester/  
4% spandex)  
Foldover waistband  
Slim fit leg with slight flare  
Full length  
(31" inseam)

**Ivory  
Pink  
Yellow**



**Madelyn  
3YAE510A**

Matte jersey  
(96% polyester/  
4% spandex)  
Foldover waistband  
Slim fit leg with slight flare  
Full length  
(31" inseam)

**Ivory  
Pink  
Yellow**



**Madelyn  
3YAE510A**

Matte jersey  
(96% polyester/  
4% spandex)  
Foldover waistband  
Slim fit leg with slight flare  
Full length  
(31" inseam)

**Ivory  
Pink  
Yellow**



**Bella**  
**3YAE610A**

-----  
Matte jersey  
(96% polyester/  
4% spandex)  
Mesh lining  
(95% nylon/8% spandex)  
Keyhole at back neck  
with button  
Slim easy fit  
Above the knee length  
(35.5" HPS)

**Ivory**  
**Pink**  
**Yellow**



**Bella**  
**3YAE610A**

-----  
Matte jersey  
(96% polyester/  
4% spandex)  
Mesh lining  
(95% nylon/8% spandex)  
Keyhole at back neck  
with button  
Slim easy fit  
Above the knee length  
(35.5" HPS)

**Ivory**  
**Pink**  
**Yellow**



**Bella**  
**3YAE610A**

-----  
Matte jersey  
(96% polyester/  
4% spandex)  
Mesh lining  
(95% nylon/8% spandex)  
Keyhole at back neck  
with button  
Slim easy fit  
Above the knee length  
(35.5" HPS)

**Ivory**  
**Pink**  
**Yellow**





**Skylar  
3YAE612A**

-----  
Washed poplin  
(100% Cotton)  
Slim fit through waist  
Smocked panel at back  
bodice for comfort  
Center back zipper  
Flared skirt with pockets  
Above the knee length  
(35" HPS)

**Ivory  
Pink  
Yellow**



**Skylar  
3YAE612A**

-----  
Washed poplin  
(100% Cotton)  
Slim fit through waist  
Smocked panel at back  
bodice for comfort  
Center back zipper  
Flared skirt with pockets  
Above the knee length  
(35" HPS)

**Ivory  
Pink  
Yellow**



**Skylar  
3YAE612A**

-----  
Washed poplin  
(100% Cotton)  
Slim fit through waist  
Smocked panel at back  
bodice for comfort  
Center back zipper  
Flared skirt with pockets  
Above the knee length  
(35" HPS)

**Ivory  
Pink  
Yellow**



**Genesis  
3YAE614A**

Matte jersey  
(96% polyester/  
4% spandex)  
Mesh lining  
(95% nylon/8% spandex)  
Slim fit through bodice  
A-line skirt  
with pleat at waist  
3/4 balloon sleeve  
with cuff  
Below the knee length  
(41" HPS)

**Ivory  
Pink  
Yellow**



**Genesis  
3YAE614A**

Matte jersey  
(96% polyester/  
4% spandex)  
Mesh lining  
(95% nylon/8% spandex)  
Slim fit through bodice  
A-line skirt  
with pleat at waist  
3/4 balloon sleeve  
with cuff  
Below the knee length  
(41" HPS)

**Ivory  
Pink  
Yellow**



**Genesis  
3YAE614A**

Matte jersey  
(96% polyester/  
4% spandex)  
Mesh lining  
(95% nylon/8% spandex)  
Slim fit through bodice  
A-line skirt  
with pleat at waist  
3/4 balloon sleeve  
with cuff  
Below the knee length  
(41" HPS)

**Ivory  
Pink  
Yellow**





**Sophie**  
**3YAE616A**

-----  
Washed Georgette  
(100% Rayon)  
Challis lining  
(100% Viscose)  
Buttons at Front body  
Trim at arm  
Balloon sleeve  
with smocked cuff  
Voluminous tier at hem  
Self belt  
Maxi length (58" HPS)

**Ivory**  
**Pink**  
**Yellow**



**Sophie**  
**3YAE616A**

-----  
Washed Georgette  
(100% Rayon)  
Challis lining  
(100% Viscose)  
Buttons at Front body  
Trim at arm  
Balloon sleeve  
with smocked cuff  
Voluminous tier at hem  
Self belt  
Maxi length (58" HPS)

**Ivory**  
**Pink**  
**Yellow**



**Sophie**  
**3YAE616A**

-----  
Washed Georgette  
(100% Rayon)  
Challis lining  
(100% Viscose)  
Buttons at Front body  
Trim at arm  
Balloon sleeve  
with smocked cuff  
Voluminous tier at hem  
Self belt  
Maxi length (58" HPS)

**Ivory**  
**Pink**  
**Yellow**



**Kennedy  
3YAE710A**

-----  
Jacquard Sweater  
(100% Cotton)  
Shawl collar,  
fringe at edges  
Pockets at hips  
Wrap body with belt  
Buttons at front  
for closure option  
Low hip length  
(28" HPS)

**Blue  
Ivory  
Pink**



**Kennedy  
3YAE710A**

-----  
Jacquard Sweater  
(100% Cotton)  
Shawl collar,  
fringe at edges  
Pockets at hips  
Wrap body with belt  
Buttons at front  
for closure option  
Low hip length  
(28" HPS)

**Blue  
Ivory  
Pink**



**Kennedy  
3YAE710A**

-----  
Jacquard Sweater  
(100% Cotton)  
Shawl collar,  
fringe at edges  
Pockets at hips  
Wrap body with belt  
Buttons at front  
for closure option  
Low hip length  
(28" HPS)

**Blue  
Ivory  
Pink**





**Valeria  
3YAE910A**

-----  
Jacquard Knit Blanket  
(100% Cotton)  
Size: 45" x 72"

**Blue  
Ivory  
Pink**



**Valeria  
3YAE910A**

-----  
Jacquard Knit Blanket  
(100% Cotton)  
Size: 45" x 72"

**Blue  
Ivory  
Pink**



**Valeria  
3YAE910A**

-----  
Jacquard Knit Blanket  
(100% Cotton)  
Size: 45" x 72"

**Blue  
Ivory  
Pink**



Limited  
Edition  
Denim



**Blake**  
**ODEN510A**

-----  
Made in the USA  
Cotton stretch denim  
High waisted fit  
(12 3/8" rise including  
waistband)  
Wide leg with flare  
Stitched pin tuck  
Side pockets at front  
Patch pockets at back  
Shipped with 33" inseam  
Deep hem to adjust length

**Black**  
**Light blue wash**  
**Dark blue wash**  
**White**



**Blake**  
**ODEN510A**

-----  
Made in the USA  
Cotton stretch denim  
High waisted fit  
(12 3/8" rise including  
waistband)  
Wide leg with flare  
Stitched pin tuck  
Side pockets at front  
Patch pockets at back  
Shipped with 33" inseam  
Deep hem to adjust length

**Black**  
**Light blue wash**  
**Dark blue wash**  
**White**





**Blake  
ODEN510A**

-----  
Made in the USA  
Cotton stretch denim  
High waisted fit  
(12 3/8" rise including  
waistband)  
Wide leg with flare  
Stitched pin tuck  
Side pockets at front  
Patch pockets at back  
Shipped with 33" inseam  
Deep hem to adjust length

**Black**  
**Light blue wash**  
**Dark blue wash**  
**White**





**Blake**  
**ODEN510A**

-----  
Made in the USA  
Cotton stretch denim  
High waisted fit  
(12 3/8" rise including  
waistband)  
Wide leg with flare  
Stitched pin tuck  
Side pockets at front  
Patch pockets at back  
Shipped with 33" inseam  
Deep hem to adjust length

**Black**  
**Light blue wash**  
**Dark blue wash**  
**White**



# Desert Light





**Sadie  
3YDT220A**

Washed Voile  
(30% silk/70% cotton)  
Jersey cami lining  
(95% viscose/5% spandex)  
Ruffle at neckline & wrist  
Long sleeve, low hip length  
with curved hem

**3YDT220B  
(BEADED)**

Hand beading  
on neckline

**Beige  
Pink  
Teal**



**Sadie  
3YDT220A**

Washed Voile  
(30% silk/70% cotton)  
Jersey cami lining  
(95% viscose/5% spandex)  
Ruffle at neckline & wrist  
Long sleeve, low hip length  
with curved hem

**3YDT220B  
(BEADED)**

Hand beading  
on neckline

**Beige  
Pink  
Teal**



**Sadie  
3YDT220A**

Washed Voile  
(30% silk/70% cotton)  
Jersey cami lining  
(95% viscose/5% spandex)  
Ruffle at neckline & wrist  
Long sleeve, low hip length  
with curved hem

**3YDT220B  
(BEADED)**

Hand beading  
on neckline

**Beige  
Pink  
Teal**

**Natalia**  
**3YDT222A**

-----  
Washed crepe de chine  
(100% silk)  
Buttons at front body  
Smocked yoke detail  
at front  
Long sleeve  
with smocked cuff  
Low hip length  
with curved hem

**Beige**  
**Pink**  
**Teal**



**Quinn**  
**3YDT520A**

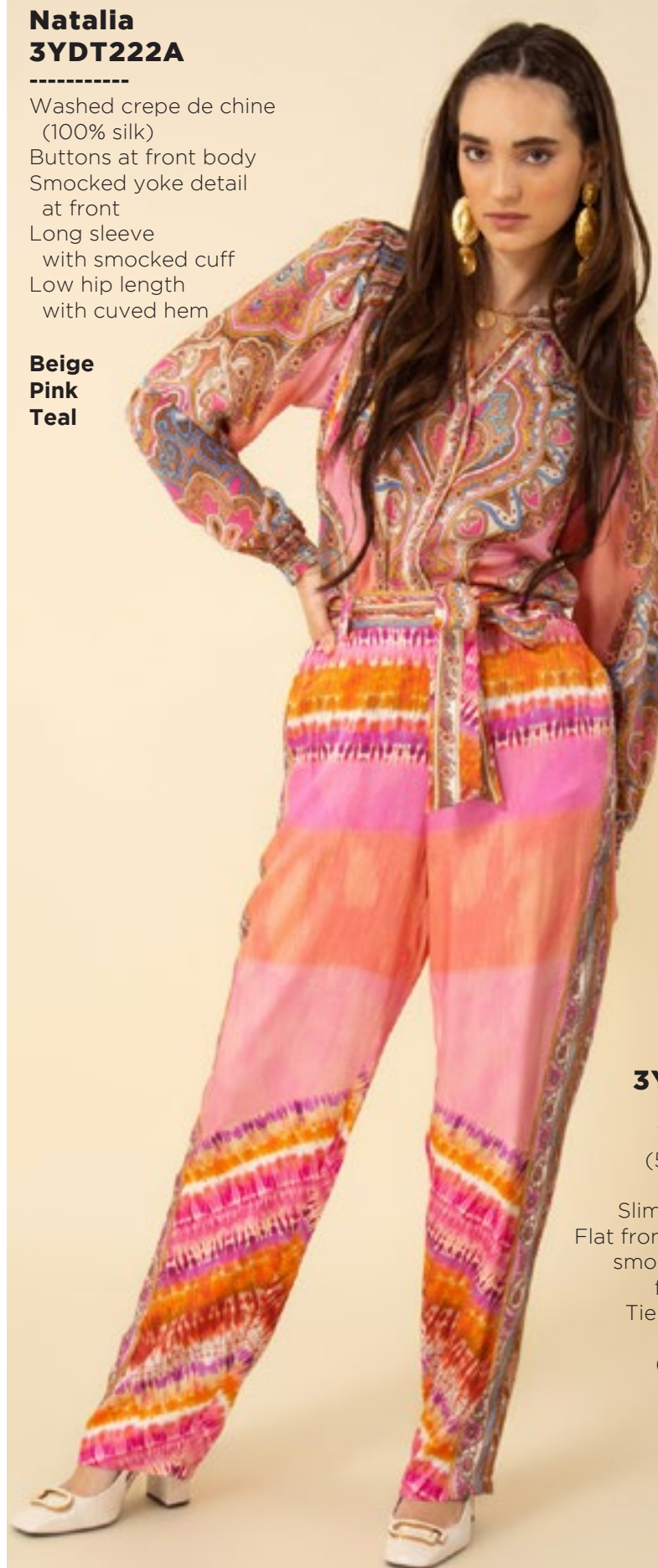
-----  
Washed twill  
(55% viscose/  
45% rayon)  
Slim/straight leg  
Flat front waistband,  
smocked at back  
for pull-on fit  
Tie belt at waist  
Full length  
(30" Inseam)

**Beige**  
**Pink**  
**Teal**

**Natalia**  
**3YDT222A**

-----  
Washed crepe de chine  
(100% silk)  
Buttons at front body  
Smocked yoke detail  
at front  
Long sleeve  
with smocked cuff  
Low hip length  
with curved hem

**Beige**  
**Pink**  
**Teal**



**Quinn**  
**3YDT520A**

-----  
Washed twill  
(55% viscose/  
45% rayon)  
Slim/straight leg  
Flat front waistband,  
smocked at back  
for pull-on fit  
Tie belt at waist  
Full length  
(30" Inseam)

**Beige**  
**Pink**  
**Teal**

**Natalia**  
**3YDT222A**

-----  
Washed crepe de chine  
(100% silk)  
Buttons at front body  
Smocked yoke detail  
at front  
Long sleeve  
with smocked cuff  
Low hip length  
with curved hem

**Beige**  
**Pink**  
**Teal**



**Quinn**  
**3YDT520A**

-----  
Washed twill  
(55% viscose/  
45% rayon)  
Slim/straight leg  
Flat front waistband,  
smocked at back  
for pull-on fit  
Tie belt at waist  
Full length  
(30" Inseam)

**Beige**  
**Pink**  
**Teal**



**Caroline  
3YDT620A**

Chiffon  
(100% polyester)  
Smocked and ruffle  
at neck  
Short easy sleeve  
Tiered voluminous skirt  
with slit at lower tiers  
Ankle length  
with slight hi/low  
(49" HPS at front,  
52" at back)

**Beige  
Pink  
Teal**



**Caroline  
3YDT620A**

Chiffon  
(100% polyester)  
Smocked and ruffle  
at neck  
Short easy sleeve  
Tiered voluminous skirt  
with slit at lower tiers  
Ankle length  
with slight hi/low  
(49" HPS at front,  
52" at back)

**Beige  
Pink  
Teal**



**Caroline  
3YDT620A**

Chiffon  
(100% polyester)  
Smocked and ruffle  
at neck  
Short easy sleeve  
Tiered voluminous skirt  
with slit at lower tiers  
Ankle length  
with slight hi/low  
(49" HPS at front,  
52" at back)

**Beige  
Pink  
Teal**



**Allison  
3YDT622A**

-----  
Washed chiffon  
(70% rayon/30% silk)  
Challis lining  
(100% Viscose)  
Long sleeve  
with smocked cuff  
Smocking at waist  
Pockets at hips  
Tier at lower skirt  
Above the knee  
(35.5" HPS)

**Beige  
Pink  
Teal**



**Allison  
3YDT622A**

-----  
Washed chiffon  
(70% rayon/30% silk)  
Challis lining  
(100% Viscose)  
Long sleeve  
with smocked cuff  
Smocking at waist  
Pockets at hips  
Tier at lower skirt  
Above the knee  
(35.5" HPS)

**Beige  
Pink  
Teal**



**Allison  
3YDT622A**

-----  
Washed chiffon  
(70% rayon/30% silk)  
Challis lining  
(100% Viscose)  
Long sleeve  
with smocked cuff  
Smocking at waist  
Pockets at hips  
Tier at lower skirt  
Above the knee  
(35.5" HPS)

**Beige  
Pink  
Teal**



**Allison  
3YDT622M**

-----  
Washed chiffon  
(70% rayon/30% silk)  
Challis lining  
(100% Viscose)  
Long sleeve  
with smocked cuff  
Smocking at waist  
Pockets at hips  
Tier at lower skirt  
Maxi length  
(58" HPS)

**Beige  
Pink  
Teal**



**Allison  
3YDT622M**

-----  
Washed chiffon  
(70% rayon/30% silk)  
Challis lining  
(100% Viscose)  
Long sleeve  
with smocked cuff  
Smocking at waist  
Pockets at hips  
Tier at lower skirt  
Maxi length  
(58" HPS)

**Beige  
Pink  
Teal**





**Allison**  
**3YDT622M**

-----  
Washed chiffon  
(70% rayon/30% silk)  
Challis lining  
(100% Viscose)  
Long sleeve  
with smocked cuff  
Smocking at waist  
Pockets at hips  
Tier at lower skirt  
Maxi length  
(58" HPS)

**Beige**  
**Pink**  
**Teal**





**Gabriella  
3YDT624A**

Matte jersey  
(96% polyester/  
4% spandex)  
Mesh lining  
(95% nylon/  
8% spandex)  
Pleat at CF under placket  
Pockets at hips  
Voluminous 3/4 sleeve  
withcuff at opening  
Deep hem added  
for length  
Above the knee  
(35.5" HPS)

**Beige  
Pink  
Teal**



**Gabriella  
3YDT624A**

Matte jersey  
(96% polyester/  
4% spandex)  
Mesh lining  
(95% nylon/  
8% spandex)  
Pleat at CF under placket  
Pockets at hips  
Voluminous 3/4 sleeve  
withcuff at opening  
Deep hem added  
for length  
Above the knee  
(35.5" HPS)

**Beige  
Pink  
Teal**



**Gabriella  
3YDT624A**

Matte jersey  
(96% polyester/  
4% spandex)  
Mesh lining  
(95% nylon/  
8% spandex)  
Pleat at CF under placket  
Pockets at hips  
Voluminous 3/4 sleeve  
withcuff at opening  
Deep hem added  
for length  
Above the knee  
(35.5" HPS)

**Beige  
Pink  
Teal**



**Gabriella  
3YDT624D**

-----  
Matte jersey  
(96% polyester/  
4% spandex)  
Mesh lining  
(95% nylon/  
8% spandex)  
Pleat at CF under placket  
Pockets at hips  
Voluminous 3/4 sleeve  
withcuff at opening  
Deep hem added  
for length  
Below the knee  
(41" HPS)

**Beige  
Teal**



**Gabriella  
3YDT624D**

-----  
Matte jersey  
(96% polyester/  
4% spandex)  
Mesh lining  
(95% nylon/  
8% spandex)  
Pleat at CF under placket  
Pockets at hips  
Voluminous 3/4 sleeve  
withcuff at opening  
Deep hem added  
for length  
Below the knee  
(41" HPS)

**Beige  
Teal**

**Serenity**  
**3YDT626A**

-----  
Washed twill  
(55% viscose/  
45% rayon)  
Long flared sleeve  
Borders at sides  
with high slit  
Maxi length  
(57.5" HPS)

**Beige**  
**Pink**  
**Teal**



**Serenity**  
**3YDT626A**

-----  
Washed twill  
(55% viscose/  
45% rayon)  
Long flared sleeve  
Borders at sides  
with high slit  
Maxi length  
(57.5" HPS)

**Beige**  
**Pink**  
**Teal**





**Serenity**  
**3YDT626A**

-----  
Washed twill  
(55% viscose/  
45% rayon)  
Long flared sleeve  
Borders at sides  
with high slit  
Maxi length  
(57.5" HPS)

**Beige**  
**Pink**  
**Teal**



**Nevaeh**  
**3YDT820A**

Swim  
(87% nylon/  
13% spandex)  
Fully lined  
Ruffle at front &  
back neck

**Pink**  
**Teal**



**Nevaeh**  
**3YDT820A**

Swim  
(87% nylon/  
13% spandex)  
Fully lined  
Ruffle at front &  
back neck

**Pink**  
**Teal**







Rock Candy





**Cora  
3YKN230A**

-----  
Embroidered crinkle gauze  
(100% rayon)  
Challis lining at body  
(100% viscose)  
Buttons at top neckline  
Long sleeve with cuff  
Low hip length  
with curved hem

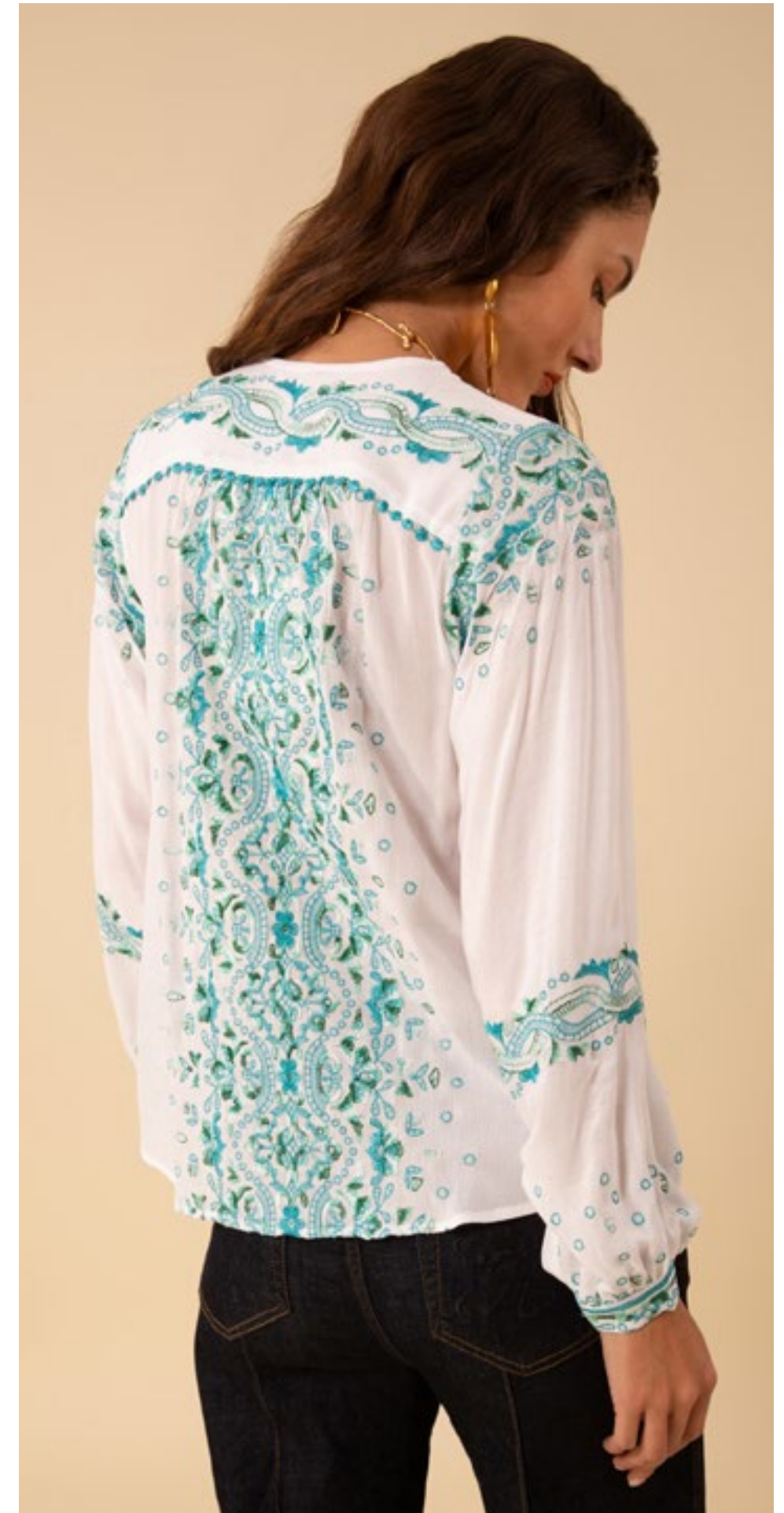
**Black  
Blue  
Ivory  
Fuchsia**



**Cora  
3YKN230A**

-----  
Embroidered crinkle gauze  
(100% rayon)  
Challis lining at body  
(100% viscose)  
Buttons at top neckline  
Long sleeve with cuff  
Low hip length  
with curved hem

**Black  
Blue  
Ivory  
Fuchsia**





**Cora**  
**3YKN230A**

Embroidered crinkle gauze  
(100% rayon)  
Challis lining at body  
(100% viscose)  
Buttons at top neckline  
Long sleeve with cuff  
Low hip length  
with curved hem

**Black**  
**Blue**  
**Ivory**  
**Fuchsia**



**Cora**  
**3YKN230A**

Embroidered crinkle gauze  
(100% rayon)  
Challis lining at body  
(100% viscose)  
Buttons at top neckline  
Long sleeve with cuff  
Low hip length  
with curved hem

**Black**  
**Blue**  
**Ivory**  
**Fuchsia**



**Ariana  
3YKN630A**  
-----

Embroidered crinkle gauze  
(100% rayon)  
Challis lining at body  
(100% viscose)  
Flutter sleeve  
Pockets at hips  
Tier at hem  
Above the knee length  
(35.5" HPS)

**Black  
Blue  
Ivory  
Fuchsia**



**Ariana  
3YKN630A**  
-----

Embroidered crinkle gauze  
(100% rayon)  
Challis lining at body  
(100% viscose)  
Flutter sleeve  
Pockets at hips  
Tier at hem  
Above the knee length  
(35.5" HPS)

**Black  
Blue  
Ivory  
Fuchsia**



**Ariana  
3YKN630A**  
-----

Embroidered crinkle gauze  
(100% rayon)  
Challis lining at body  
(100% viscose)  
Flutter sleeve  
Pockets at hips  
Tier at hem  
Above the knee length  
(35.5" HPS)

**Black  
Blue  
Ivory  
Fuchsia**



**Ariana**  
**3YKN630A**

Embroidered crinkle gauze  
(100% rayon)  
Challis lining at body  
(100% viscose)  
Flutter sleeve  
Pockets at hips  
Tier at hem  
Above the knee length  
(35.5" HPS)

**Black**  
**Blue**  
**Ivory**  
**Fuchsia**



**Emery**  
**3YKN632A**

Embroidered crinkle gauze  
(100% rayon)  
Challis lining at body  
(100% viscose)  
Easy fit, slim through  
rib cage  
Tiered, swingy fit at skirt  
3/4 full sleeve with cuff  
Above the knee  
(35.5" HPS)

**Black**  
**Blue**  
**Ivory**  
**Fuchsia**



**Emery**  
**3YKN632A**

Embroidered crinkle gauze  
(100% rayon)  
Challis lining at body  
(100% viscose)  
Easy fit, slim through  
rib cage  
Tiered, swingy fit at skirt  
3/4 full sleeve with cuff  
Above the knee  
(35.5" HPS)

**Black**  
**Blue**  
**Ivory**  
**Fuchsia**



**Emery  
3YKN632A**

-----  
Embroidered crinkle gauze  
(100% rayon)  
Challis lining at body  
(100% viscose)  
Easy fit, slim through  
rib cage  
Tiered, swingy fit at skirt  
3/4 full sleeve with cuff  
Above the knee  
(35.5" HPS)

**Black  
Blue  
Ivory  
Fuchsia**



**Emery  
3YKN632A**

-----  
Embroidered crinkle gauze  
(100% rayon)  
Challis lining at body  
(100% viscose)  
Easy fit, slim through  
rib cage  
Tiered, swingy fit at skirt  
3/4 full sleeve with cuff  
Above the knee  
(35.5" HPS)

**Black  
Blue  
Ivory  
Fuchsia**



**Emery  
3YKN632M**

-----  
Embroidered crinkle gauze  
(100% rayon)  
Challis lining at body  
(100% viscose)  
Easy fit, slim through  
rib cage  
Tiered, swingy fit at skirt  
3/4 full sleeve with cuff  
Maxi length (58" HPS)

**Black  
Blue  
Ivory  
Fuchsia**



**Emery**  
**3YKN632M**

-----  
Embroidered crinkle gauze  
(100% rayon)  
Challis lining at body  
(100% viscose)  
Easy fit, slim through  
rib cage  
Tiered, swingy fit at skirt  
3/4 full sleeve with cuff  
Maxi length (58" HPS)

**Black**  
**Blue**  
**Ivory**  
**Fuchsia**



**Emery**  
**3YKN632M**

-----  
Embroidered crinkle gauze  
(100% rayon)  
Challis lining at body  
(100% viscose)  
Easy fit, slim through  
rib cage  
Tiered, swingy fit at skirt  
3/4 full sleeve with cuff  
Maxi length (58" HPS)

**Black**  
**Blue**  
**Ivory**  
**Fuchsia**

**Emery**  
**3YKN632M**

-----  
Embroidered crinkle gauze  
(100% rayon)  
Challis lining at body  
(100% viscose)  
Easy fit, slim through  
rib cage  
Tiered, swingy fit at skirt  
3/4 full sleeve with cuff  
Maxi length (58" HPS)

**Black**  
**Blue**  
**Ivory**  
**Fuchsia**





Garden Glory



**Lydia**  
**3YNG240A**

-----  
Crepe de chine  
(100% viscose)  
Buttons at front body  
Smocked yoke detail  
at front  
Long sleeve  
with smocked cuff  
Low hip length  
with curved hem

**Blue**  
**Coral**



**Lydia**  
**3YNG240A**

-----  
Crepe de chine  
(100% viscose)  
Buttons at front body  
Smocked yoke detail  
at front  
Long sleeve  
with smocked cuff  
Low hip length  
with curved hem

**Blue**  
**Coral**



**Adeline**  
**3YNG242A**

-----  
Crepe de chine  
(100% viscose)  
Ruffles at neck & armholes  
Low hip with curved hem

**Blue**  
**Coral**



**Adeline**  
**3YNG242A**

-----  
Crepe de chine  
(100% viscose)  
Ruffles at neck & armholes  
Low hip with curved hem

**Blue**  
**Coral**



**Eliza  
3YNG440A**

Crepe de chine  
(100% viscose)  
Skirt is lined with print fabric  
Smocked waistband  
can be worn on the  
waist or hip  
Pockets at hips  
Tiered voluminous fit  
Length from top  
waistband to hem:  
30" (midi length)

**Blue  
Coral**



**Eliza  
3YNG440A**

Crepe de chine  
(100% viscose)  
Skirt is lined with print fabric  
Smocked waistband  
can be worn on the  
waist or hip  
Pockets at hips  
Tiered voluminous fit  
Length from top  
waistband to hem:  
30" (midi length)

**Blue  
Coral**



**Piper  
3YNG640A**

Matte jersey  
(90% polyester/10%spandex)  
Elastic with ties at waist  
Long sleeve w/ smocked cuff  
Gussets at skirt creates  
voluminous swing fit  
Above the knee length  
(35.5" HPS)

**Blue  
Coral**





**Piper**  
**3YNG640A**

Matte jersey  
(90% polyester/10%spandex)  
Elastic with ties at waist  
Long sleeve w/ smocked cuff  
Gussets at skirt creates  
voluminous swing fit  
Above the knee length  
(35.5" HPS)

**Blue**  
**Coral**



**Rylee**  
**3YNG642A**

Crepe de chine  
(100% viscose)  
Body is lined with print  
Slim easy fit through body  
with back zip  
Pockets at hips  
Button detail at front body  
are functional towards hem  
to adjust slit opening  
Midi length (47" HPS)

**Blue**  
**Coral**



**Rylee  
3YNG642A**

Crepe de chine  
(100% viscose)  
Body is lined with print  
Slim easy fit through body  
with back zip  
Pockets at hips  
Button detail at front body  
are functional towards hem  
to adjust slit opening  
Midi length (47" HPS)

**Blue  
Coral**



**Peyton  
3YNG644A**

Chiffon  
(100% polyester)  
Smocking & ruffle  
at neck  
Hook & eye hidden  
at front neck  
Elastic smocked waist  
Flutter sleeve with ruffle  
Tiered skirt with slit  
at lower tiers  
Ankle length  
with hi/low hem  
(49" at front,  
52" at back)

**Blue  
Coral**



**Peyton  
3YNG644A**

Chiffon  
(100% polyester)  
Smocking & ruffle  
at neck  
Hook & eye hidden  
at front neck  
Elastic smocked waist  
Flutter sleeve with ruffle  
Tiered skirt with slit  
at lower tiers  
Ankle length  
with hi/low hem  
(49" at front,  
52" at back)

**Blue  
Coral**

A woman with long dark hair, wearing large gold earrings and a vibrant, long-sleeved dress with a pink-to-orange gradient and a patterned hem, stands on a wooden deck. The dress is blowing in the wind. Behind her is a lush garden with tall grasses, a wooden walkway, and a swimming pool. In the background, there are green hills and a large tree. The scene is brightly lit, suggesting a sunny day.

Sunrise  
and  
Shine

**Everleigh  
3YRR250A**

Washed crepe de chine  
(100% silk)  
Ruffle at neckline  
Buttons at front keyhole  
Long sleeve  
with elastic & ruffle  
Low hip length  
with curved hem

**Blue  
Pink**



**Everleigh  
3YRR250A**

Washed crepe de chine  
(100% silk)  
Ruffle at neckline  
Buttons at front keyhole  
Long sleeve  
with elastic & ruffle  
Low hip length  
with curved hem

**Blue  
Pink**



**Vivian**  
**3YRR252A**

Washed twill  
(55% viscose/45% rayon)  
Rib knit neckband  
Border detail at side body  
High hip length

**Blue**  
**Pink**



**Vivian**  
**3YRR252A**

Washed twill  
(55% viscose/45% rayon)  
Rib knit neckband  
Border detail at side body  
High hip length

**Blue**  
**Pink**



**Raelynn**  
**3YRR550A**

Washed twill  
(55% viscose/  
45% rayon)  
Smocked waistband  
Pockets at hips  
Easy straight fit  
Full length leg  
(31" Inseam)

**Blue**  
**Pink**







**Raelynn  
3YRR550A**

Washed twill  
(55% viscose/  
45% rayon)  
Smocked waistband  
Pockets at hips  
Easy straight fit  
Full length leg  
(31" Inseam)

**Blue  
Pink**



**Liliana  
3YRR650A**

Matte jersey  
(96% polyester/  
4% spandex)  
Mesh lining  
(95% nylon/8% spandex)  
Keyhole at back neck  
with button  
Slim easy fit  
Above the knee length  
(35.5" HPS)

**Blue  
Pink**



**Liliana  
3YRR650A**

Matte jersey  
(96% polyester/  
4% spandex)  
Mesh lining  
(95% nylon/8% spandex)  
Keyhole at back neck  
with button  
Slim easy fit  
Above the knee length  
(35.5" HPS)

**Blue  
Pink**



**Samantha  
3YRR652A**

Matte jersey  
(96% polyester/  
4% spandex)  
Shirring at front & back  
body with tie  
at center front neck  
Dropped shoulder  
Slim fit through body  
with flounce hem  
Midi length (47" HPS)

**Blue  
Pink**





**Ayla**  
**3YRR654A**

-----  
Washed chiffon  
(70% rayon/30% silk)  
Jersey lining  
(95% viscose/5% spandex)  
Elastic smocking at waist  
Long sleeve  
with smocked cuff  
Tier at lower skirt  
Above the knee length  
(35.5" HPS)

**Blue**  
**Pink**



**Ayla**  
**3YRR654A**

-----  
Washed chiffon  
(70% rayon/30% silk)  
Jersey lining  
(95% viscose/5% spandex)  
Elastic smocking at waist  
Long sleeve  
with smocked cuff  
Tier at lower skirt  
Above the knee length  
(35.5" HPS)

**Blue**  
**Pink**



**Ayla**  
**3YRR654M**

-----  
Washed chiffon  
(70% rayon/30% silk)  
Jersey lining  
(95% viscose/5% spandex)  
Elastic smocking at waist  
Long sleeve  
with smocked cuff  
Tier at lower skirt  
Maxi length  
(58" HPS)

**Blue**  
**Pink**



**Ayla**  
**3YRR654M**

-----  
Washed chiffon  
(70% rayon/30% silk)  
Jersey lining  
(95% viscose/5% spandex)  
Elastic smocking at waist  
Long sleeve  
with smocked cuff  
Tier at lower skirt  
Maxi length  
(58" HPS)

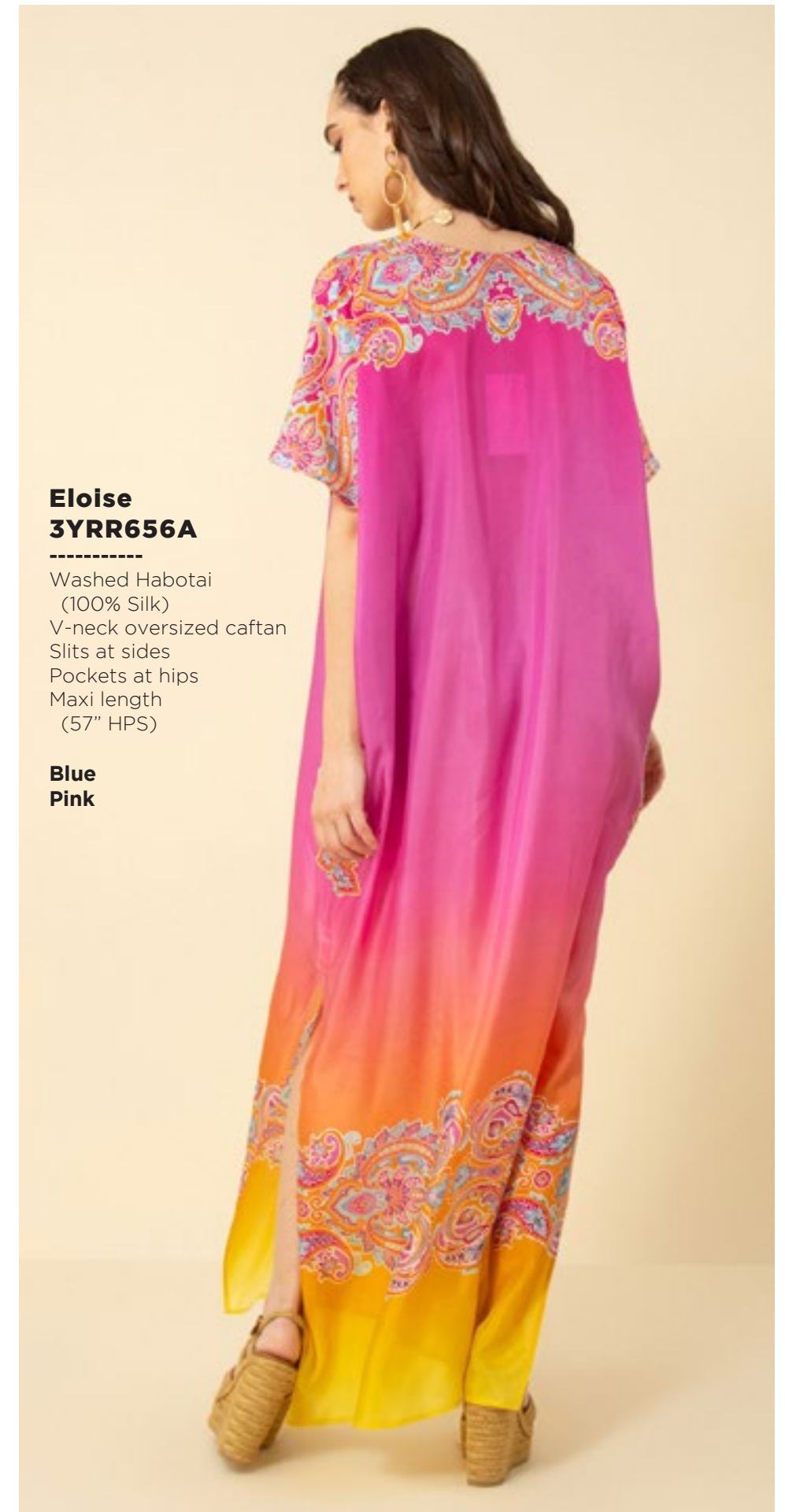
**Blue**  
**Pink**



**Eloise**  
**3YRR656A**

-----  
Washed Habotai  
(100% Silk)  
V-neck oversized caftan  
Slits at sides  
Pockets at hips  
Maxi length  
(57" HPS)

**Blue**  
**Pink**



**Eloise**  
**3YRR656A**

-----  
Washed Habotai  
(100% Silk)  
V-neck oversized caftan  
Slits at sides  
Pockets at hips  
Maxi length  
(57" HPS)

**Blue**  
**Pink**

**Madeline**  
**3YRR850A**

Swim  
(87% nylon/13% spandex)  
Fully lined  
Ties around neck  
or at bust for  
strapless look

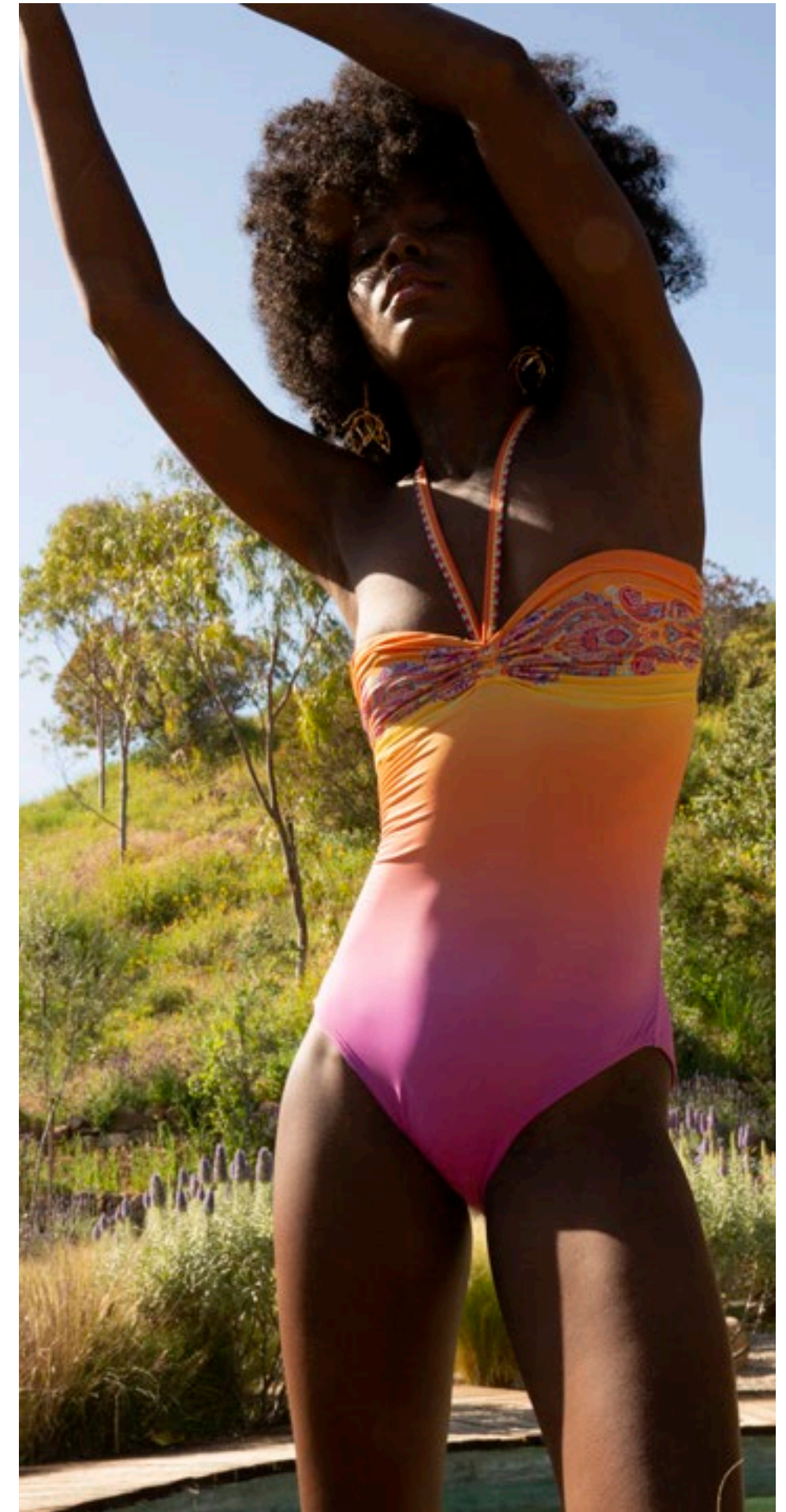
**Blue**  
**Pink**



**Madeline**  
**3YRR850A**

Swim  
(87% nylon/  
13% spandex)  
Fully lined  
Ties around neck  
or at bust for  
strapless look

**Blue**  
**Pink**





Calm  
Kaleidoscope



**Lyla**  
**3YSP260A**

-----  
Washed Voile  
(30% silk/70% cotton)  
Jersey cami lining  
(95% viscose/5% spandex)  
Ruffle at neckline  
Buttons at front keyhole  
Long sleeve  
with smocked cuff  
Low hip length  
with curved hem

**Blue**  
**Coral**



**Lyla**  
**3YSP260A**

-----  
Washed Voile  
(30% silk/70% cotton)  
Jersey cami lining  
(95% viscose/5% spandex)  
Ruffle at neckline  
Buttons at front keyhole  
Long sleeve  
with smocked cuff  
Low hip length  
with curved hem

**Blue**  
**Coral**

**Hadley  
3YSP262A**

Washed Georgette  
(100% Rayon)  
Body is lined with challis  
(100% Viscose)  
Pintucks at front &  
back body  
Lace-up at front keyhole  
Ruffle sleeve  
Low hip length  
with curved hem

**Blue  
Coral**



**Hadley  
3YSP262A**

Washed Georgette  
(100% Rayon)  
Body is lined with challis  
(100% Viscose)  
Pintucks at front &  
back body  
Lace-up at front keyhole  
Ruffle sleeve  
Low hip length  
with curved hem

**Blue  
Coral**







**Parker  
3YSP560A**

Stretch Canvas  
(97% cotton/  
3% spandex)  
High waist silhouette  
Invisible side zip  
Welt pocket at back  
Slim fit through leg  
with flare  
Full length leg  
(32" Inseam)

**Blue  
Coral**



**Parker  
3YSP560A**

Stretch Canvas  
(97% cotton/  
3% spandex)  
High waist silhouette  
Invisible side zip  
Welt pocket at back  
Slim fit through leg  
with flare  
Full length leg  
(32" Inseam)

**Blue  
Coral**



**Parker  
3YSP560S**

Stretch Canvas  
(97% cotton/  
3% spandex)  
High waist silhouette  
Invisible side zip  
Welt pocket at back  
Slim fit through leg  
with flare  
Full length leg  
(32" Inseam)

**White**



**Brielle**  
**3YSP660A**

-----  
Matte jersey  
(96% polyester/  
4% spandex)  
V-neck at front  
Pockets at hips  
7/8 length bell sleeve  
Easy a-line body  
Above the knee length  
(35.5" HPS)

**Blue**  
**Coral**



**Brielle**  
**3YSP660A**

-----  
Matte jersey  
(96% polyester/  
4% spandex)  
V-neck at front  
Pockets at hips  
7/8 length bell sleeve  
Easy a-line body  
Above the knee length  
(35.5" HPS)

**Blue**  
**Coral**



**Adalynn**  
**3YSP662A**

-----  
Washed georgette  
(100% Rayon)  
Body is lined with challis  
(100% Viscose)  
Slim fit through bodice  
Smocked panel at CB  
with zipper for flexible fit  
Short sleeve with pleating  
Tiered swingy skirt  
Above the knee length  
(35"HPS)

**Blue**  
**Coral**



**Adalynn  
3YSP662A**

Washed georgette  
(100% Rayon)  
Body is lined with challis  
(100% Viscose)  
Slim fit through bodice  
Smocked panel at CB  
with zipper for flexible fit  
Short sleeve with pleating  
Tiered swiny skirt  
Above the knee length  
(35"HPS)

**Blue  
Coral**



**Arya  
3YSP664A**

Washed crepe de chine  
(100% rayon)  
Buttons at front body  
Long sleeve  
with tab to adjust  
length to 3/4  
Self belt included  
Tier at hem  
Maxi length (58" HPS)

**Blue  
Coral**



**Arya  
3YSP664A**

Washed crepe de chine  
(100% rayon)  
Buttons at front body  
Long sleeve  
with tab to adjust  
length to 3/4  
Self belt included  
Tier at hem  
Maxi length (58" HPS)

**Blue  
Coral**

This book is a presentation of a selection of Hale Bob product and is correct at time of publication.

To view the entire collection of products including updates and additions. You can view product line sheets at [halebob.com](http://halebob.com) by logging into the "Merchant" section of our website.

Prices and products posted in this book are current at time of publication but are subject to change.

**Sales Director**

East Coast  
South East  
Puerto Rico  
Canada  
Majors

**Cathy Cooley**

310-963-2463  
[cathy@halebob.com](mailto:cathy@halebob.com)

**Sales Executive**

Mexico  
Central America  
South America

**Isabela Peralta**

323-394-1739  
[isabela@halebob.com](mailto:isabela@halebob.com)

**Sales Executive**

Midwest

**Tracy Holden**

214-454-1176  
[tracy@halebob.com](mailto:tracy@halebob.com)

**For Marketing & Press Inquiries:**

Marianna Gunther  
[marianna@halebob.com](mailto:marianna@halebob.com)

**HALE BOB**  
LOS ANGELES

