

HALE BOB

LOS ANGELES

Season 9



Desert Stars





**Garance
39ED2020**

Velvet burnout
(60% silk/40% viscose)
Set in lining at body
(100% viscose)
Shirring at yoke &
center front
Long sleeve
with smocked cuff

**Black
Emerald
Rose**

\$158

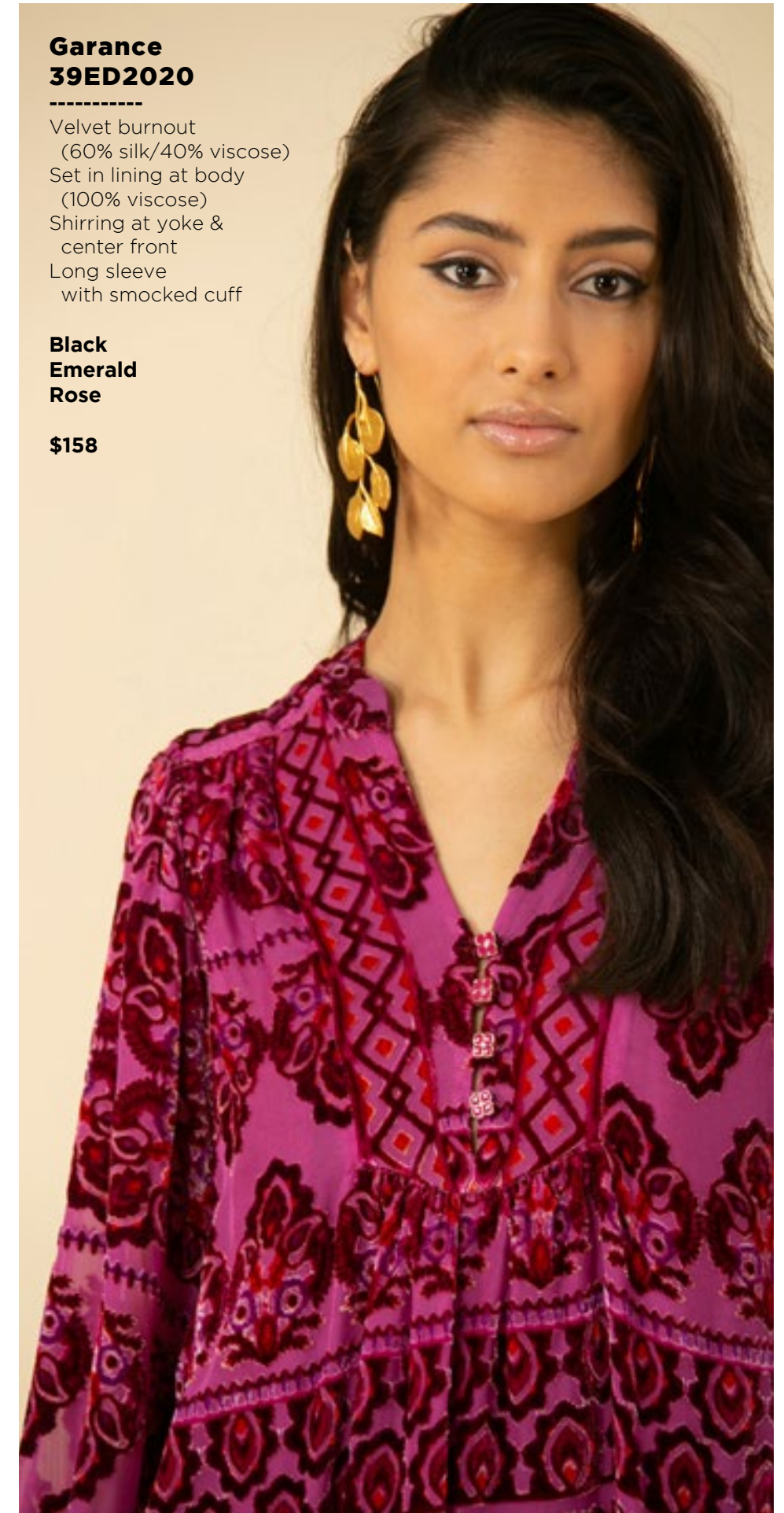


**Garance
39ED2020**

Velvet burnout
(60% silk/40% viscose)
Set in lining at body
(100% viscose)
Shirring at yoke &
center front
Long sleeve
with smocked cuff

**Black
Emerald
Rose**

\$158



**Garance
39ED2020**

Velvet burnout
(60% silk/40% viscose)
Set in lining at body
(100% viscose)
Shirring at yoke &
center front
Long sleeve
with smocked cuff

**Black
Emerald
Rose**

\$158

Nelya
39ED2040

Matte jersey
(96% polyester/
4% spandex)
Pleat at front under placket
Full length sleeve with
smocked cuff
Hip length

Black
Emerald

\$78



Nelya
39ED2040

Matte jersey
(96% polyester/
4% spandex)
Pleat at front under placket
Full length sleeve with
smocked cuff
Hip length

Black
Emerald

\$78



Harper
39ED6020

Matte jersey
(96% polyester/
4% spandex)
Slim fit through rib cage
Tiered swingy fit at skirt
Long sleeve
with smocked cuff
Above the knee length
(35.5" HPS)

Black
Emerald

\$98



Harper
39ED6020

Matte jersey
(96% polyester/
4% spandex)
Slim fit through rib cage
Tiered swingy fit at skirt
Long sleeve
with smocked cuff
Above the knee length
(35.5" HPS)

Black
Emerald

\$98



Camila
39ED6030

Velvet burnout
(60% silk/40% viscose)
Set in lining at body
(100% viscose)
Smocked waistband
Skirt with tier at hem
Pockets at hips
Long sleeve
with smocked cuff
Above the knee length
(35.5" HPS)

Black
Emerald
Rose

\$198



Camila
39ED6030

Velvet burnout
(60% silk/40% viscose)
Set in lining at body
(100% viscose)
Smocked waistband
Skirt with tier at hem
Pockets at hips
Long sleeve
with smocked cuff
Above the knee length
(35.5" HPS)

Black
Emerald
Rose

\$198



Camila
39ED6030

Velvet burnout
(60% silk/40% viscose)
Set in lining at body
(100% viscose)
Smocked waistband
Skirt with tier at hem
Pockets at hips
Long sleeve
with smocked cuff
Above the knee length
(35.5" HPS)

Black
Emerald
Rose

\$198



Gianna
39ED6040

Velvet burnout
(60% silk/40% viscose)
Set in lining at body
(100% viscose)
Slim fit through body
Voluminous tier at skirt
Buttons at front body
Puff sleeve
with elastic smocking
Tie belt at waist
Maxi length (58" HPS)

Black
Emerald
Rose

\$288



Gianna
39ED6040

Velvet burnout
(60% silk/40% viscose)
Set in lining at body
(100% viscose)
Slim fit through body
Voluminous tier at skirt
Buttons at front body
Puff sleeve
with elastic smocking
Tie belt at waist
Maxi length (58" HPS)

Black
Emerald
Rose

\$288



Gianna
39ED6040

Velvet burnout
(60% silk/40% viscose)
Set in lining at body
(100% viscose)
Slim fit through body
Voluminous tier at skirt
Buttons at front body
Puff sleeve
with elastic smocking
Tie belt at waist
Maxi length (58" HPS)

Black
Emerald
Rose

\$288



Elizabeth
39ED6050

Lightweight stretch velvet
(90% polyester/10% span)
Slim fit through rib cage
Tiered swingy fit at skirt
Long sleeve
with smocked cuff
Above the knee length
(35.5" HPS)

Black
Emerald
Navy
Wine

\$98



Elizabeth
39ED6050

Lightweight stretch velvet
(90% polyester/10% span)
Slim fit through rib cage
Tiered swingy fit at skirt
Long sleeve
with smocked cuff
Above the knee length
(35.5" HPS)

Black
Emerald
Navy
Wine

\$98





Elizabeth
39ED6050

Lightweight stretch velvet
(90% polyester/10% span)
Slim fit through rib cage
Tiered swingy fit at skirt
Long sleeve
with smocked cuff
Above the knee length
(35.5" HPS)

Black
Emerald
Navy
Wine

\$98



Elizabeth
39ED6050

Lightweight stretch velvet
(90% polyester/10% span)
Slim fit through rib cage
Tiered swingy fit at skirt
Long sleeve
with smocked cuff
Above the knee length
(35.5" HPS)

Black
Emerald
Navy
Wine

\$98



Eleanor
39ED6060

Lightweight stretch velvet
(90% polyester/10% span)
Hook & eye at front neck
Elastic smocked waist
Long sleeve
with smocked cuff
Tiered skirt
with slit at lower tiers
Ankle length at front
with hi/low hem
(49" at front, 52" at back)

Black
Emerald
Navy
Wine

\$158



**Eleanor
39ED6060**

Lightweight stretch velvet
(90% polyester/10% span)
Hook & eye at front neck
Elastic smocked waist
Long sleeve
with smocked cuff
Tiered skirt
with slit at lower tiers
Ankle length at front
with hi/low hem
(49" at front, 52" at back)

**Black
Emerald
Navy
Wine**

\$158



**Eleanor
39ED6060**

Lightweight stretch velvet
(90% polyester/10% span)
Hook & eye at front neck
Elastic smocked waist
Long sleeve
with smocked cuff
Tiered skirt
with slit at lower tiers
Ankle length at front
with hi/low hem
(49" at front, 52" at back)

**Black
Emerald
Navy
Wine**

\$158



**Eleanor
39ED6060**

Lightweight stretch velvet
(90% polyester/10% span)
Hook & eye at front neck
Elastic smocked waist
Long sleeve
with smocked cuff
Tiered skirt
with slit at lower tiers
Ankle length at front
with hi/low hem
(49" at front, 52" at back)

**Black
Emerald
Navy
Wine**

\$158



Life
in
Color

Abigail
39FC2020

Washed crepe de chine
(100% silk)
Voluminous long sleeve
with smocked cuff
Relaxed swingy fit
Hip length
with curved hem

Fuchsia
Taupe

\$148



Abigail
39FC2020

Washed crepe de chine
(100% silk)
Voluminous long sleeve
with smocked cuff
Relaxed swingy fit
Hip length
with curved hem

Fuchsia
Taupe

\$148



Avery
39FC4020

Lightweight faux leather
(100% Poly, fuzzy back
face of fabric)
Smocked waist
Tiered skirt
Pockets at hips
18.5" from waist to hem

Black
Ivory
Olive

\$98

NOTE: The samples are small.
A zipper will be added at the
waist for easy entry





**Avery
39FC4020**

Lightweight faux leather
(100% Poly, fuzzy back
face of fabric)
Smocked waist
Tiered skirt
Pockets at hips
18.5" from waist to hem

**Black
Ivory
Olive**

\$98

NOTE: The samples are small.
A zipper will be added at the
waist for easy entry



**Avery
39FC4020**

Lightweight faux leather
(100% Poly, fuzzy back
face of fabric)
Smocked waist
Tiered skirt
Pockets at hips
18.5" from waist to hem

**Black
Ivory
Olive**

\$98

NOTE: The samples are small.
A zipper will be added at the
waist for easy entry



**Avery
39FC402D**

Lightweight faux leather
(100% Poly, fuzzy back
face of fabric)
Smocked waist
Tiered skirt
Pockets at hips
30.5" from waist to hem

**Black
Ivory
Olive**

\$138

NOTE: The samples are small.
A zipper will be added at the
waist for easy entry

Avery
39FC402D

Lightweight faux leather
(100% Poly, fuzzy back
face of fabric)
Smocked waist
Tiered skirt
Pockets at hips
30.5" from waist to hem

Black
Ivory
Olive

\$138

NOTE: The samples are small.
A zipper will be added at the
waist for easy entry



Avery
39FC402D

Lightweight faux leather
(100% Poly, fuzzy back
face of fabric)
Smocked waist
Tiered skirt
Pockets at hips
30.5" from waist to hem

Black
Ivory
Olive

\$138

NOTE: The samples are small.
A zipper will be added at the
waist for easy entry



Emily
39FC6020

Lightweight faux leather
(100% Poly, fuzzy back
face of fabric)
Smocked waistband
Skirt with tier at hem
Pockets at hips
Long sleeve
with smocked cuff
Above the knee length
(35.5" HPS)

Black
Ivory
Olive

\$168





**Emily
39FC6020**

Lightweight faux leather
(100% Poly, fuzzy back
face of fabric)
Smocked waistband
Skirt with tier at hem
Pockets at hips
Long sleeve
with smocked cuff
Above the knee length
(35.5" HPS)

**Black
Ivory
Olive**

\$168



**Emily
39FC6020**

Lightweight faux leather
(100% Poly, fuzzy back
face of fabric)
Smocked waistband
Skirt with tier at hem
Pockets at hips
Long sleeve
with smocked cuff
Above the knee length
(35.5" HPS)

**Black
Ivory
Olive**

\$168



**Penelope
39FC6030**

Matte jersey
(96% polyester/
4% spandex)
Collar with mid length
placket at front,
with clover buttons
Pockets at hips
Long sleeve with wide cuff
Self covered belt included
Above the knee length
(35.5" HPS)
Deep hem included
to adjust length

**Fuchsia
Taupe**

\$118



**Penelope
39FC6030**

Matte jersey
(96% polyester/
4% spandex)
Collar with mid length
placket at front,
with clover buttons
Pockets at hips
Long sleeve with wide cuff
Self covered belt included
Above the knee length
(35.5" HPS)
Deep hem included
to adjust length

**Fuchsia
Taupe**

\$118

Chloe
39FC6040

Chiffon
(100% Polyester)
Smocking & ruffle at neck
Hook & eye hidden
at front neck
Elastic smocked waist
Elbow length bell sleeve
with ruffle
Tiered skirt
Midi length
with hi/low hem
(41" at front,
44" at back)

Fuchsia
Taupe

\$118



Chloe
39FC6040

Chiffon
(100% Polyester)
Smocking & ruffle at neck
Hook & eye hidden
at front neck
Elastic smocked waist
Elbow length bell sleeve
with ruffle
Tiered skirt
Midi length
with hi/low hem
(41" at front,
44" at back)

Fuchsia
Taupe

\$118

Scarlett
39FC6050

Poly Chiffon
with foiling Chiffon
(100% Polyester)
Ruffle detailing
throughout body
Elastic smocked waist
Tiered voluminous skirt
with side slit at leg
Long sleeve
with smocked cuff
Maxi length (58" HPS)

Fuchsia
Taupe

\$138





Scarlett
39FC6050

Poly Chiffon
with foiling Chiffon
(100% Polyester)
Ruffle detailing
throughout body
Elastic smocked waist
Tiered voluminous skirt
with side slit at leg
Long sleeve
with smocked cuff
Maxi length (58" HPS)

Fuchsia
Taupe

\$138





High Voltage



**Nora
39HG2020**

Lurex crinkle mesh
(100% polyester)
Set in lining
(100% viscose)
Buttons at front keyhole
Smocked detail at neck
with ruffle
Long full sleeve
with smocking & ruffle

**Black
Champagne**

\$68



**Nora
39HG2020**

Lurex crinkle mesh
(100% polyester)
Set in lining
(100% viscose)
Buttons at front keyhole
Smocked detail at neck
with ruffle
Long full sleeve
with smocking & ruffle

**Black
Champagne**

\$68

Hazel
39HG4020

Lurex crinkle mesh
(100% polyester)
Set in lining
(100% viscose)
Tiered skirt
with slit at lower tiers
Ankle length at front
with hi/low hem

Black
Champagne

\$118



Hazel
39HG4020

Lurex crinkle mesh
(100% polyester)
Set in lining
(100% viscose)
Tiered skirt
with slit at lower tiers
Ankle length at front
with hi/low hem

Black
Champagne

\$118



Ellie
39HG6020

Lurex crinkle mesh
(100% polyester)
Set in lining
(100% viscose)
Faux wrap at front body
Shirred upper skirt with
tiered lower ruffles
Long sleeve with
smocked cuff
Mini length (34" HPS)

Black
Champagne

\$98



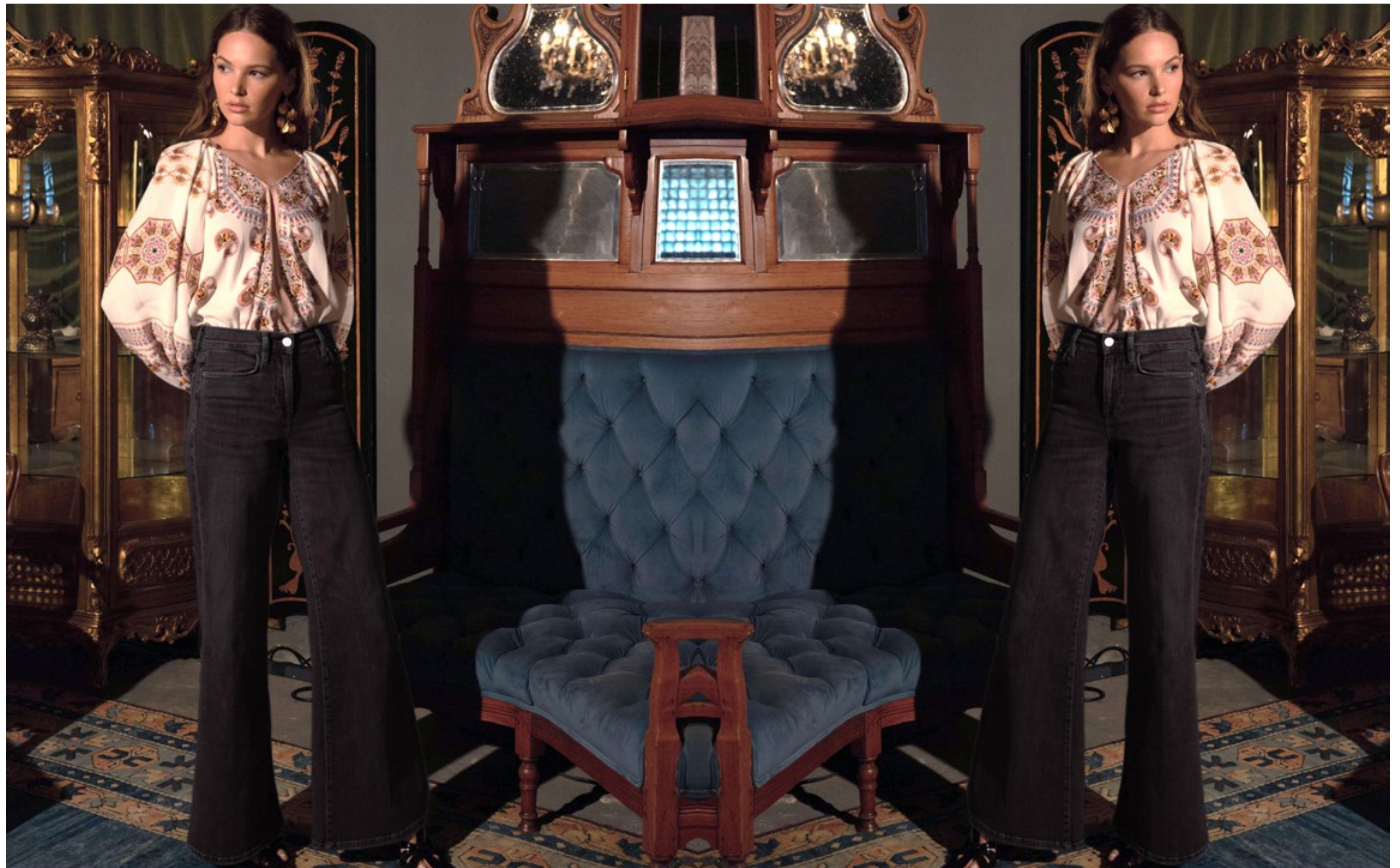
Ellie
39HG6020

Lurex crinkle mesh
(100% polyester)
Set in lining
(100% viscose)
Faux wrap at front body
Shirred upper skirt with
tiered lower ruffles
Long sleeve with
smocked cuff
Mini length (34" HPS)

Black
Champagne

\$98







Blake
ODEN510A

Made in the USA
Cotton stretch denim
High waisted fit
Wide leg with flare
Stitched pin tuck
Side pockets at front
Patch pockets at back
Shipped with 33" inseam
Deep hem to adjust length

Black wash
Dark Blue Wash

\$118

Denim will be available in
seasons 7, 8, and 9.
Please specify delivery date
on purchase order.



Leaves Fall



Nova
39LV2020

Velvet burnout
(60% silk/40% viscose)
Set in lining at body
(100% viscose)
Smocking at neck
Buttons at front keyhole
Long sleeve with cuff
Low hip length
with curved hem

Olive
Raspberry

\$148



Nova
39LV2020

Velvet burnout
(60% silk/40% viscose)
Set in lining at body
(100% viscose)
Smocking at neck
Buttons at front keyhole
Long sleeve with cuff
Low hip length
with curved hem

Olive
Raspberry

\$148



Nova
39LV202S

Velvet burnout
(60% silk/40% viscose)
Set in lining at body
(100% viscose)
Smocking at neck
Buttons at front keyhole
Long sleeve with cuff
Low hip length
with curved hem

Black
Forest Green
Rose

\$138





**Nova
39LV202S**

Velvet burnout
(60% silk/40% viscose)
Set in lining at body
(100% viscose)
Smocking at neck
Buttons at front keyhole
Long sleeve with cuff
Low hip length
with curved hem

**Black
Forest Green
Rose**

\$138



**Nova
39LV202S**

Velvet burnout
(60% silk/40% viscose)
Set in lining at body
(100% viscose)
Smocking at neck
Buttons at front keyhole
Long sleeve with cuff
Low hip length
with curved hem

**Black
Forest Green
Rose**

\$138



**Violet
39LV2040**

Velvet burnout
(60% silk/40% viscose)
Set in lining at body
(100% viscose)
Elastic & ruffle at neck
can be worn on or
off the shoulder
Ties at front neck
Long sleeve with ruffle
Hip length

**Olive
Raspberry**

\$148



**Violet
39LV2040**

Velvet burnout
(60% silk/40% viscose)
Set in lining at body
(100% viscose)
Elastic & ruffle at neck
can be worn on or
off the shoulder
Ties at front neck
Long sleeve with ruffle
Hip length

**Olive
Raspberry**

\$148



**Violet
39LV204S**

Velvet burnout
(60% silk/40% viscose)
Set in lining at body
(100% viscose)
Elastic & ruffle at neck
can be worn on or
off the shoulder
Ties at front neck
Long sleeve with ruffle
Hip length

**Black
Forest Green
Rose**

\$148



**Violet
39LV204S**

Velvet burnout
(60% silk/40% viscose)
Set in lining at body
(100% viscose)
Elastic & ruffle at neck
can be worn on or
off the shoulder
Ties at front neck
Long sleeve with ruffle
Hip length

**Black
Forest Green
Rose**

\$148



Violet
39LV204S

Velvet burnout
(60% silk/40% viscose)
Set in lining at body
(100% viscose)
Elastic & ruffle at neck
can be worn on or
off the shoulder
Ties at front neck
Long sleeve with ruffle
Hip length

Black
Forest Green
Rose

\$148



Riley
39LV3020

Wool Blend Jacquard Sweater
(58% Acrylic/ 30% Polyester/
10% wool/ 2% spandex)
Shawl collar, fringe at edges
Wrap body with belt
Low hip length (28" HPS)

Beige
Blue
Pink

\$118



Riley
39LV3020

Wool Blend Jacquard Sweater
(58% Acrylic/ 30% Polyester/
10% wool/ 2% spandex)
Shawl collar, fringe at edges
Wrap body with belt
Low hip length (28" HPS)

Beige
Blue
Pink

\$118



Riley
39LV3020

Wool Blend Jacquard Sweater
(58% Acrylic/ 30% Polyester/
10% wool/ 2% spandex)
Shawl collar, fringe at edges
Wrap body with belt
Low hip length (28" HPS)

Beige
Blue
Pink

\$118



Zoey
39LV3040

Wool Blend Jacquard Sweater
(58% Acrylic/ 30% Polyester/
10% wool/ 2% spandex)
Shawl collar, fringe at edges
Wrap body with belt
Midi length (46" HPS)

Beige
Blue
Pink

\$148



Zoey
39LV3040

Wool Blend Jacquard Sweater
(58% Acrylic/ 30% Polyester/
10% wool/ 2% spandex)
Shawl collar, fringe at edges
Wrap body with belt
Midi length (46" HPS)

Beige
Blue
Pink

\$148

Zoey
39LV3040

Wool Blend Jacquard Sweater
(58% Acrylic/ 30% Polyester/
10% wool/ 2% spandex)
Shawl collar, fringe at edges
Wrap body with belt
Midi length (46" HPS)

Beige
Blue
Pink

\$148



Willow
39LV6020

Velvet burnout
(60% silk/40% viscose)
Set in lining at body
(100% viscose)
Smocked waistband
Skirt with tier at hem
Pockets at hips
Balloon sleeve elbow length
Above the knee length
(35.5" HPS)

Olive
Raspberry

\$188



Willow
39LV6020

Velvet burnout
(60% silk/40% viscose)
Set in lining at body
(100% viscose)
Smocked waistband
Skirt with tier at hem
Pockets at hips
Balloon sleeve elbow length
Above the knee length
(35.5" HPS)

Olive
Raspberry

\$188





**Willow
39LV602S**

Velvet burnout
(60% silk/40% viscose)
Set in lining at body
(100% viscose)
Smocked waistband
Skirt with tier at hem
Pockets at hips
Balloon sleeve elbow length
Above the knee length
(35.5" HPS)

**Black
Forest Green
Rose**

\$178



**Willow
39LV602S**

Velvet burnout
(60% silk/40% viscose)
Set in lining at body
(100% viscose)
Smocked waistband
Skirt with tier at hem
Pockets at hips
Balloon sleeve elbow length
Above the knee length
(35.5" HPS)

**Black
Forest Green
Rose**

\$178



**Willow
39LV602S**

Velvet burnout
(60% silk/40% viscose)
Set in lining at body
(100% viscose)
Smocked waistband
Skirt with tier at hem
Pockets at hips
Balloon sleeve elbow length
Above the knee length
(35.5" HPS)

**Black
Forest Green
Rose**

\$178



Stella
39LV6040

Velvet burnout
(60% silk/40% viscose)
Set in lining at body
(100% viscose)
Flounce ruffle at neck
7/8 length sleeve
with flounce
Flower enamel buttons
at front
Buttons function only
at top and bottom
of opening
Pockets at hips
Invisible zip at back
Maxi length (58" HPS)

Olive
Raspberry

\$258



Stella
39LV6040

Velvet burnout
(60% silk/40% viscose)
Set in lining at body
(100% viscose)
Flounce ruffle at neck
7/8 length sleeve
with flounce
Flower enamel buttons
at front
Buttons function only
at top and bottom
of opening
Pockets at hips
Invisible zip
at back
Maxi length
(58" HPS)

Olive
Raspberry

\$258



Stella
39LV604S

Velvet burnout
(60% silk/40% viscose)
Set in lining at body
(100% viscose)
Flounce ruffle at neck
7/8 length sleeve
with flounce
Flower enamel buttons
at front
Buttons function only
at top and bottom
of opening
Pockets at hips
Invisible zip at back
Maxi length (58" HPS)

Black
Forest Green
Rose

\$248

Stella
39LV604S

Velvet burnout
(60% silk/40% viscose)
Set in lining at body
(100% viscose)
Flounce ruffle at neck
7/8 length sleeve
with flounce
Flower enamel buttons
at front
Buttons function only
at top and bottom
of opening
Pockets at hips
Invisible zip
at back
Maxi length
(58" HPS)

Black
Forest Green
Rose

\$248



Stella
39LV604S

Velvet burnout
(60% silk/40% viscose)
Set in lining at body
(100% viscose)
Flounce ruffle at neck
7/8 length sleeve
with flounce
Flower enamel buttons
at front
Buttons function only
at top and bottom
of opening
Pockets at hips
Invisible zip at back
Maxi length (58" HPS)

Black
Forest Green
Rose

\$248



Treasure Trove



**Addison
39SR2020**

Twill
(55% viscose/45% rayon)
Buttons at front keyhole
Scarf tie at neck
Long sleeve
with smocked cuff
Swingy fit, hip length

**Raspberry
Teal**

\$88



**Addison
39SR2020**

Twill
(55% viscose/45% rayon)
Buttons at front keyhole
Scarf tie at neck
Long sleeve
with smocked cuff
Swingy fit, hip length

**Raspberry
Teal**

\$88

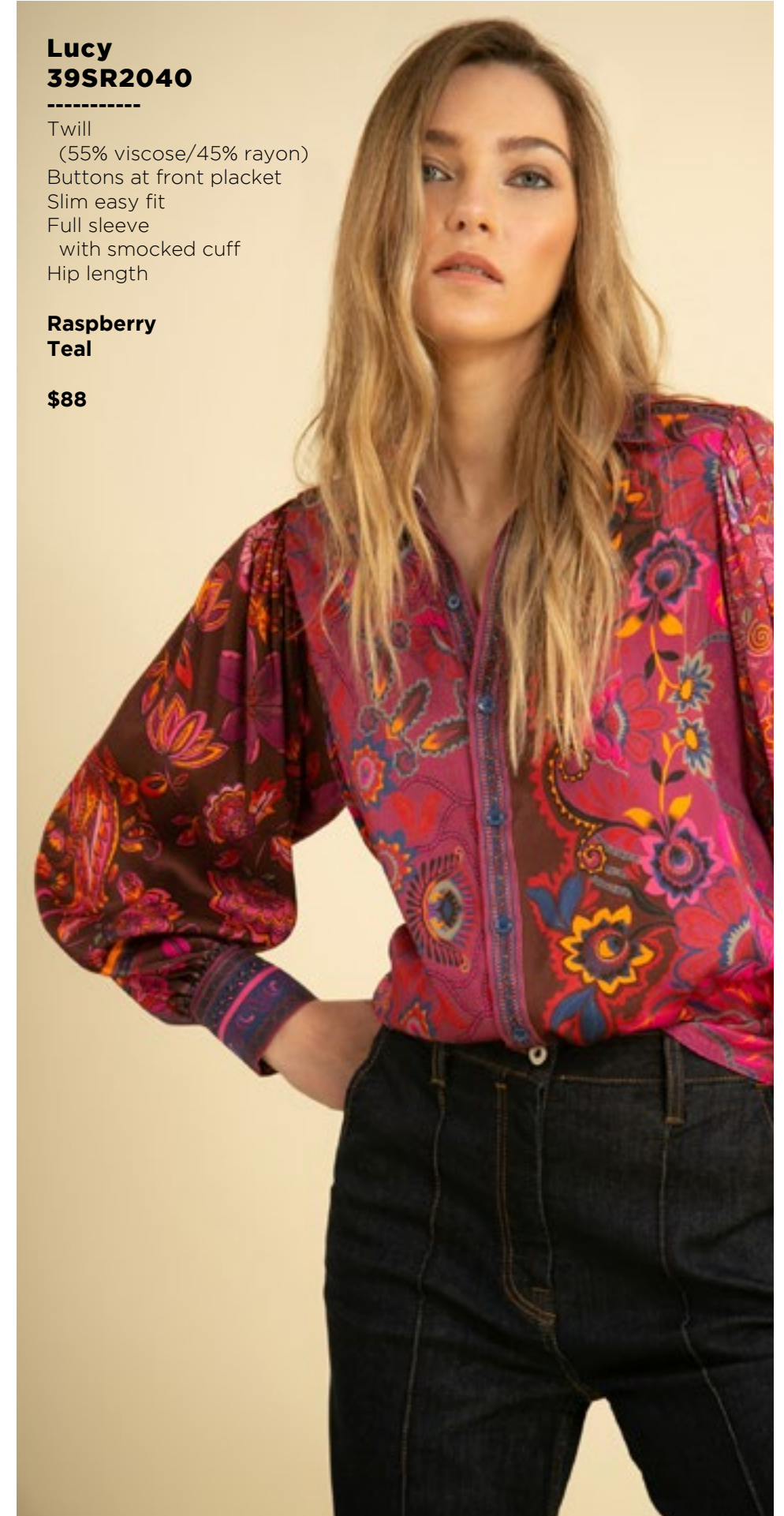


**Lucy
39SR2040**

Twill
(55% viscose/45% rayon)
Buttons at front placket
Slim easy fit
Full sleeve
with smocked cuff
Hip length

**Raspberry
Teal**

\$88





**Lucy
39SR2040**

Twill
(55% viscose/45% rayon)
Buttons at front placket
Slim easy fit
Full sleeve
with smocked cuff
Hip length

**Raspberry
Teal**

\$88



**Eliana
39SR3020**

Wool Blend Jacquard Sweater
(58% Acrylic/ 30% Polyester/
10% wool/ 2% spandex)
Shawl collar, fringe at edges
Wrap body with belt
Low hip length (28" HPS)

**Brown
Beige/Teal**

\$118



**Eliana
39SR3020**

Wool Blend Jacquard Sweater
(58% Acrylic/ 30% Polyester/
10% wool/ 2% spandex)
Shawl collar, fringe at edges
Wrap body with belt
Low hip length (28" HPS)

**Brown
Beige/Teal**

\$118

Everly
39SR3040

Wool Blend Jacquard Sweater
(58% Acrylic/ 30% Polyester/
10% wool/ 2% spandex)
Shawl collar, fringe at edges
Wrap body with belt
Midi length (46" HPS)

Navy
Beige/Red

\$148



Everly
39SR3040

Wool Blend Jacquard Sweater
(58% Acrylic/ 30% Polyester/
10% wool/ 2% spandex)
Shawl collar, fringe at edges
Wrap body with belt
Midi length (46" HPS)

Navy
Beige/Red

\$148



Ivy
39SR5020

Twill
(55% viscose/45% rayon)
Pockets at hips
Flat front waist
with elastic back
Slim fit leg
Tie at waist
Ankle length (29" inseam)

Raspberry
Teal

\$88





Ivy
39SR5020

Twill
(55% viscose/45% rayon)
Pockets at hips
Flat front waist
with elastic back
Slim fit leg
Tie at waist
Ankle length (29" inseam)

Raspberry
Teal

\$88

Paisley
39SR6020

Matte jersey
(96% polyester/4% spandex)
Mesh lining
(95% nylon/8% spandex)
Pleat at front under placket
Full length sleeve with cuff
Above the knee length
(35.5" HPS)
Deep hem added
to adjust length

\$108

39SR602B
(BEADED)

Hand beading
on neckline

\$118

Raspberry
Teal



Paisley
39SR6020

Matte jersey
(96% polyester/4% spandex)
Mesh lining
(95% nylon/8% spandex)
Pleat at front under placket
Full length sleeve with cuff
Above the knee length
(35.5" HPS)
Deep hem added
to adjust length

\$108

39SR602B
(BEADED)

Hand beading
on neckline

\$118

Raspberry
Teal





**Kinsley
39SR6040**

Crepe de chine
(100% viscose)
V-neck with shaped waist
3/4 length bell sleeve
Buttons function only
at bottom skirt opening
Pockets at hip
Invisible zip at back with
smocked panel for slim fit
Maxi length (58" HPS)

**Raspberry
Teal**

\$178



**Kinsley
39SR6040**

Crepe de chine
(100% viscose)
V-neck with shaped waist
3/4 length bell sleeve
Buttons function only
at bottom skirt opening
Pockets at hip
Invisible zip at back with
smocked panel for slim fit
Maxi length (58" HPS)

**Raspberry
Teal**

\$178



**Delilah
39SR7020**

Twill
(55% viscose/45% rayon)
Full lined
(100% viscose)
Pockets at front
Low hip length
with angled front opening

**Raspberry
Teal**

\$148

**Delilah
39SR7020**

Twill
(55% viscose/45% rayon)
Full lined
(100% viscose)
Pockets at front
Low hip length
with angled front opening

**Raspberry
Teal**

\$148



**Delilah
39SR702S**

Twill
(55% viscose/45% rayon)
Full lined
(100% viscose)
Pockets at front
Low hip length
with angled front opening

**Black
Camel**

\$138



**Delilah
39SR702S**

Twill
(55% viscose/45% rayon)
Full lined
(100% viscose)
Pockets at front
Low hip length
with angled front opening

**Black
Camel**

\$138







Trail
Blazer

Claire
39TZ2020

Embroidered crepe de chine
(100% viscose)
Long sleeve
with smocked cuff
Hip length
with curved hem

Black
Olive

\$118



Claire
39TZ2020

Embroidered crepe de chine
(100% viscose)
Long sleeve
with smocked cuff
Hip length
with curved hem

Black
Olive

\$118

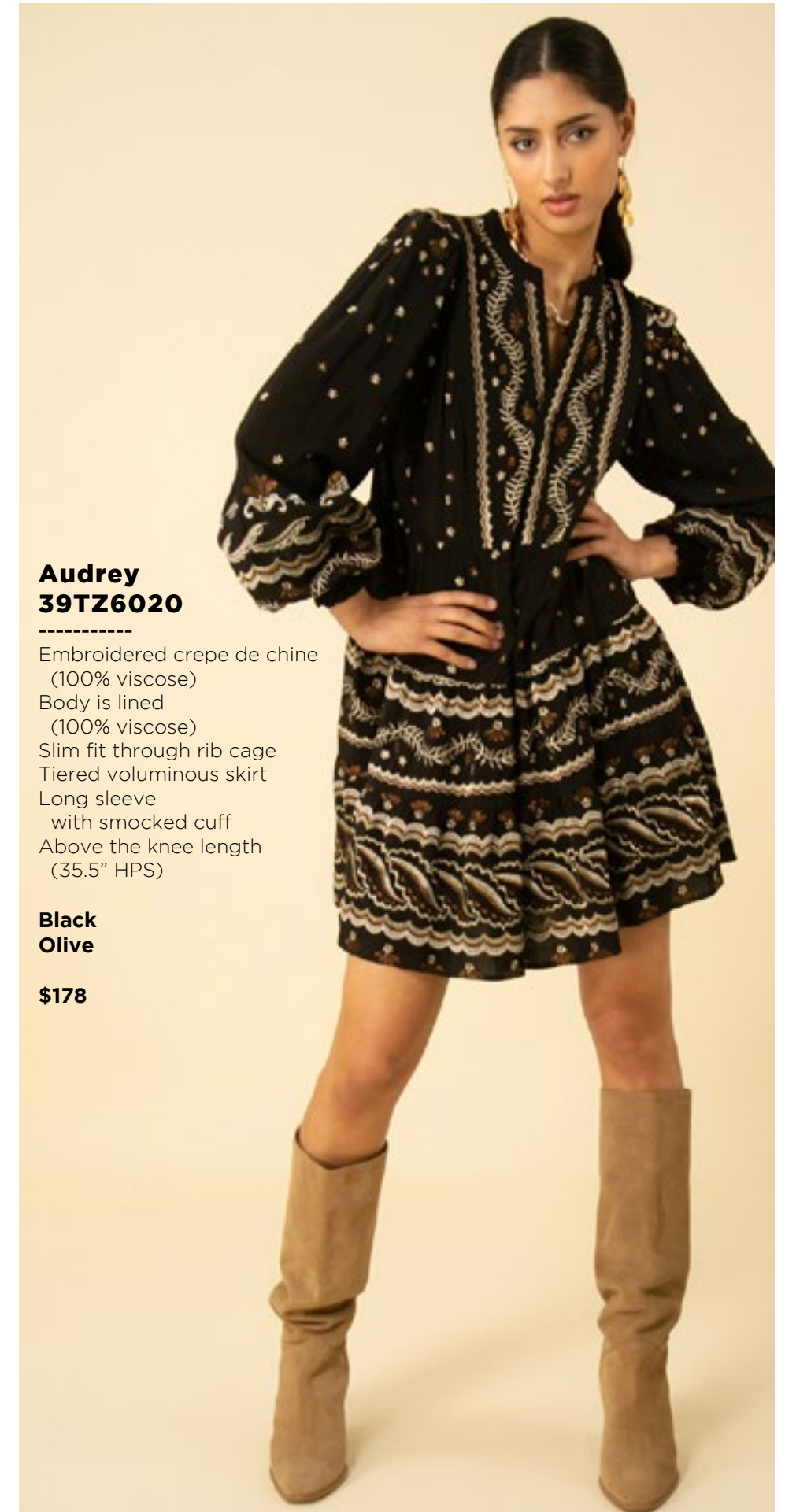


Audrey
39TZ6020

Embroidered crepe de chine
(100% viscose)
Body is lined
(100% viscose)
Slim fit through rib cage
Tiered voluminous skirt
Long sleeve
with smocked cuff
Above the knee length
(35.5" HPS)

Black
Olive

\$178



Audrey
39TZ6020

Embroidered crepe de chine
(100% viscose)
Body is lined
(100% viscose)
Slim fit through rib cage
Tiered voluminous skirt
Long sleeve
with smocked cuff
Above the knee length
(35.5" HPS)

Black
Olive

\$178



Audrey
39TZ602M

Embroidered crepe de chine
(100% viscose)
Body is lined
(100% viscose)
Slim fit through rib cage
Tiered voluminous skirt
Long sleeve
with smocked cuff
Maxi length
(58" HPS)

Black
Olive

\$218



Audrey
39TZ602M

Embroidered crepe de chine
(100% viscose)
Body is lined
(100% viscose)
Slim fit through rib cage
Tiered voluminous skirt
Long sleeve
with smocked cuff
Maxi length
(58" HPS)

Black
Olive

\$218



Coming
up
Roses





**Aaliyah
39UM2020**

Velvet burnout
(60% silk/40% viscose)
Set in lining at body
(100% viscose)
Shirring at front under yoke
Long sleeve, hip length

**Black
Teal**

\$158



**Aaliyah
39UM2020**

Velvet burnout
(60% silk/40% viscose)
Set in lining at body
(100% viscose)
Shirring at front under yoke
Long sleeve, hip length

**Black
Teal**

\$158



**Aaliyah
39UM202S**

Velvet burnout
(60% silk/40% viscose)
Set in lining at body
(100% viscose)
Shirring at front under yoke
Long sleeve, hip length

Black

\$148



Ruby
39UM6020

Velvet burnout
(60% silk/40% viscose)
Set in lining at body
(100% viscose)
Smocked waistband
Skirt with tier at hem
Pockets at hips
Elbow length balloon sleeve
Above the knee length
(35.5" HPS)

Black
Teal

\$188



Ruby
39UM6020

Velvet burnout
(60% silk/40% viscose)
Set in lining at body
(100% viscose)
Smocked waistband
Skirt with tier at hem
Pockets at hips
Elbow length balloon sleeve
Above the knee length
(35.5" HPS)

Black
Teal

\$188



Ruby
39UM602S

Velvet burnout
(60% silk/40% viscose)
Set in lining at body
(100% viscose)
Smocked waistband
Skirt with tier at hem
Pockets at hips
Elbow length balloon sleeve
Above the knee length
(35.5" HPS)

Black

\$178



**Brooklyn
39UM6040**

Velvet burnout
(60% silk/40% viscose)
Set in lining at body
(100% viscose)
Smocked waistband
Voluminous tiered skirt
Pockets at hips
Long sleeve
with smocked cuff
Maxi length
(58" HPS)

**Black
Teal**

\$288





**Brooklyn
39UM6040**

Velvet burnout
(60% silk/40% viscose)
Set in lining at body
(100% viscose)
Smocked waistband
Voluminous tiered skirt
Pockets at hips
Long sleeve
with smocked cuff
Maxi length
(58" HPS)

**Black
Teal**

\$288



**Brooklyn
39UM604S**

Velvet burnout
(60% silk/40% viscose)
Set in lining at body
(100% viscose)
Smocked waistband
Voluminous tiered skirt
Pockets at hips
Long sleeve
with smocked cuff
Maxi length
(58" HPS)

Black

\$278





Presley
39UM6060

Matte jersey
(96% polyester/
4% spandex)
Slim fit through rib cage
Easy swing fit through body
Pockets at hips
Long sleeve
with smocked cuff
Above the knee length
(35.5" HPS)

Black
Teal

\$98



Presley
39UM6060

Matte jersey
(96% polyester/
4% spandex)
Slim fit through rib cage
Easy swing fit through body
Pockets at hips
Long sleeve
with smocked cuff
Above the knee length
(35.5" HPS)

Black
Teal

\$98

This book is a presentation of a selection of Hale Bob product and is correct at time of publication.

To view the entire collection of products including updates and additions. You can view product line sheets at halebob.com by logging into the "Merchant" section of our website.

Prices and products posted in this book are current at time of publication but are subject to change.

Sales Director

East Coast
South East
Puerto Rico
Canada
Majors

Cathy Cooley

310-963-2463
cathy@halebob.com

Sales Executive

Mexico
Central America
South America

Maria Garcia

323-394-1739
mariag@halebob.com

Sales Executive

West Coast

For Marketing & Press Inquiries:

Marianna Gunther
marianna@halebob.com

HALE BOB

LOS ANGELES

