



# HALE BOB

LOS ANGELES

Fall 2 2023



**Louise  
37AX2020**

Crepe de chine  
(100% silk)  
Voluminous sleeve  
with cuff  
Low hip length  
with curved hem

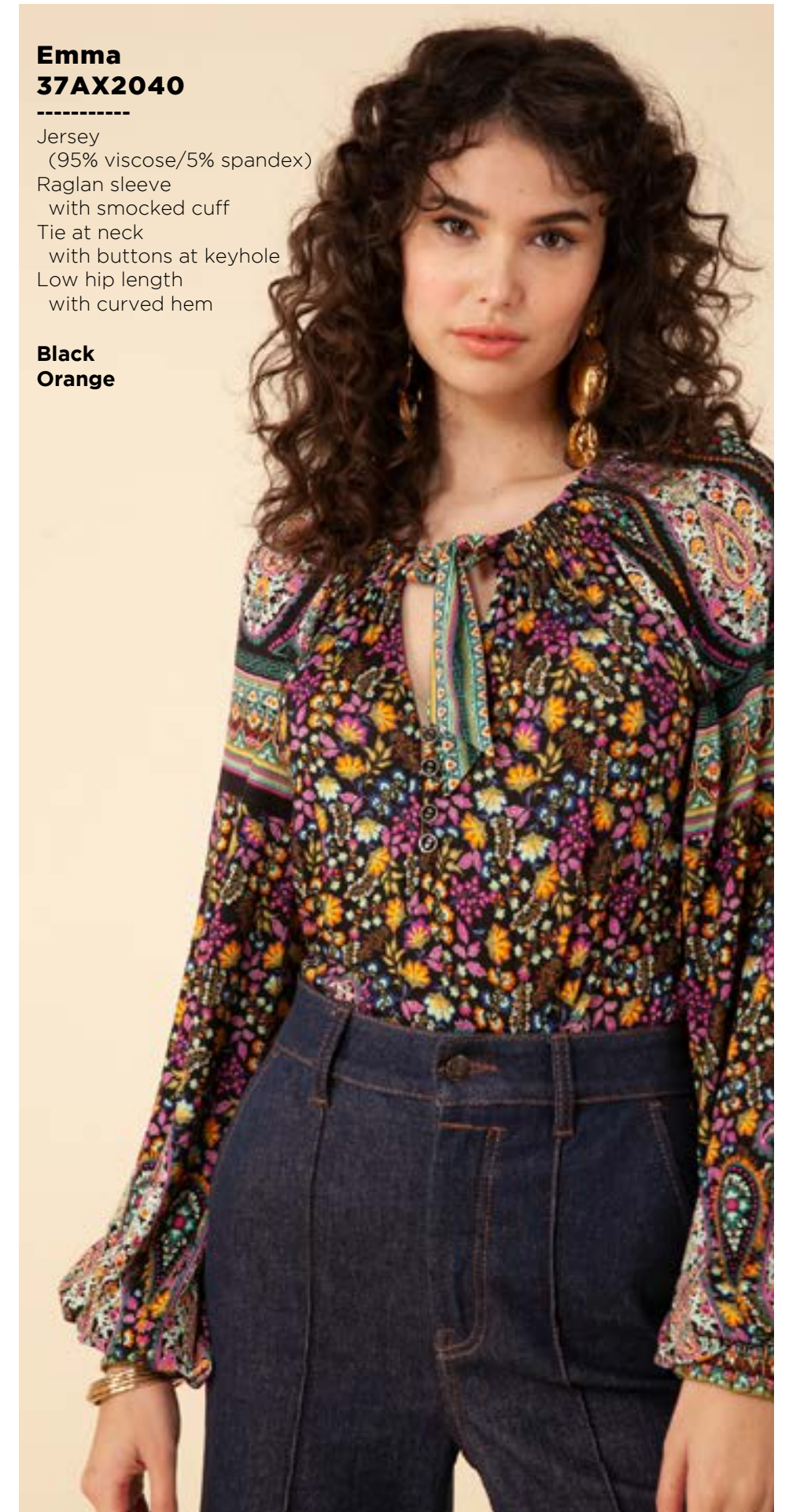
**Black  
Orange**



**Louise  
37AX2020**

Crepe de chine  
(100% silk)  
Voluminous sleeve  
with cuff  
Low hip length  
with curved hem

**Black  
Orange**



**Emma  
37AX2040**

Jersey  
(95% viscose/5% spandex)  
Raglan sleeve  
with smocked cuff  
Tie at neck  
with buttons at keyhole  
Low hip length  
with curved hem

**Black  
Orange**



**Emma**  
**37AX2040**

Jersey  
(95% viscose/5% spandex)  
Raglan sleeve  
with smocked cuff  
Tie at neck  
with buttons at keyhole  
Low hip length  
with curved hem

**Black**  
**Orange**



**Ambre**  
**37AX6020**

Washed Charmeuse  
(25% silk/75% viscose)  
A-line body  
7/8 length bell sleeve  
Above th knee length  
(35" HPS)

**Black**  
**Orange**



**Ambre**  
**37AX6020**

Washed Charmeuse  
(25% silk/75% viscose)  
A-line body  
7/8 length bell sleeve  
Above th knee length  
(35" HPS)

**Black**  
**Orange**



**Rose**  
**37AX6040**

-----  
Matte jersey  
(96% polyester/4% spandex)  
Mesh lining  
(95% nylon/8% spandex)  
Slim fit through waist  
Long full sleeve with cuff  
A-line skirt with pleat at waist  
Below the knee length  
(40"HPS)

**Black**  
**Orange**



**Rose**  
**37AX6040**

-----  
Matte jersey  
(96% polyester/4% spandex)  
Mesh lining  
(95% nylon/8% spandex)  
Slim fit through waist  
Long full sleeve with cuff  
A-line skirt with pleat at waist  
Below the knee length  
(40"HPS)

**Black**  
**Orange**



**Anna  
37AX6060**

-----  
Crepe  
(55% viscose/  
45% rayon)  
Slim fit through waist  
with smocked panel  
at back  
Invisible zip at back  
Long full sleeve  
with smocked cuff  
Tiered voluminous skirt  
Maxi length (58" HPS)

NOTE: sample is long,  
the length will be fixed  
in production

**Black  
Orange**

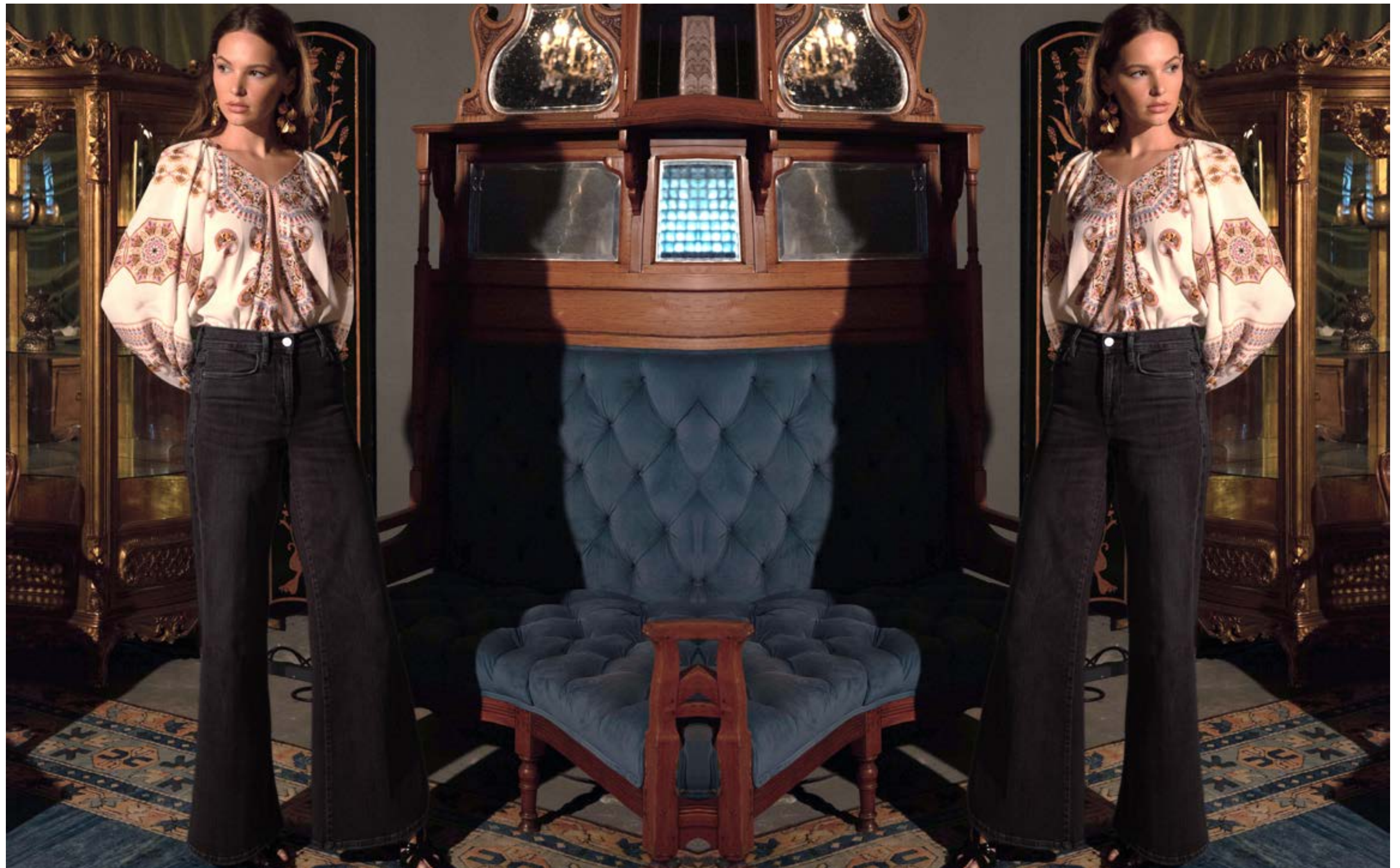


**Anna  
37AX6060**

-----  
Crepe  
(55% viscose/45% rayon)  
Slim fit through waist  
with smocked panel at back  
Invisible zip at back  
Long full sleeve  
with smocked cuff  
Tiered voluminous skirt  
Maxi length (58" HPS)

NOTE: sample is long,  
the length will be fixed  
in production

**Black  
Orange**





**Blake  
ODEN510A**

-----  
Made in the USA  
Cotton stretch denim  
High waisted fit  
Wide leg with flare  
Stitched pin tuck  
Side pockets at front  
Patch pockets at back  
Shipped with 33" inseam  
Deep hem to adjust length

**Black wash  
Dark Blue Wash**

Denim will be available in  
seasons 7, 8, and 9.  
Please specify delivery date  
on purchase order.



A woman with long, wavy brown hair and bangs is the central figure. She is wearing a long-sleeved, blue dress with a vibrant floral pattern in shades of teal and white. Her eyes are closed, and she has a serene expression. She is holding a branch of a tree with green leaves. The background is a lush garden with various green plants and trees. The lighting is bright and warm, suggesting a sunny day. The text 'Sweet Dreams' is written in a white, serif font in the upper right quadrant of the image.

Sweet  
Dreams



**Alba  
37DR2020**

Velvet Burnout  
(60% silk/40% viscose)  
Set in lining at body  
(100% viscose)  
Buttons at front keyhole  
Tie at neck  
with buttons at keyhole  
Long raglan sleeve  
Smocked cuff  
with ruffle  
Hip length  
with curved hem

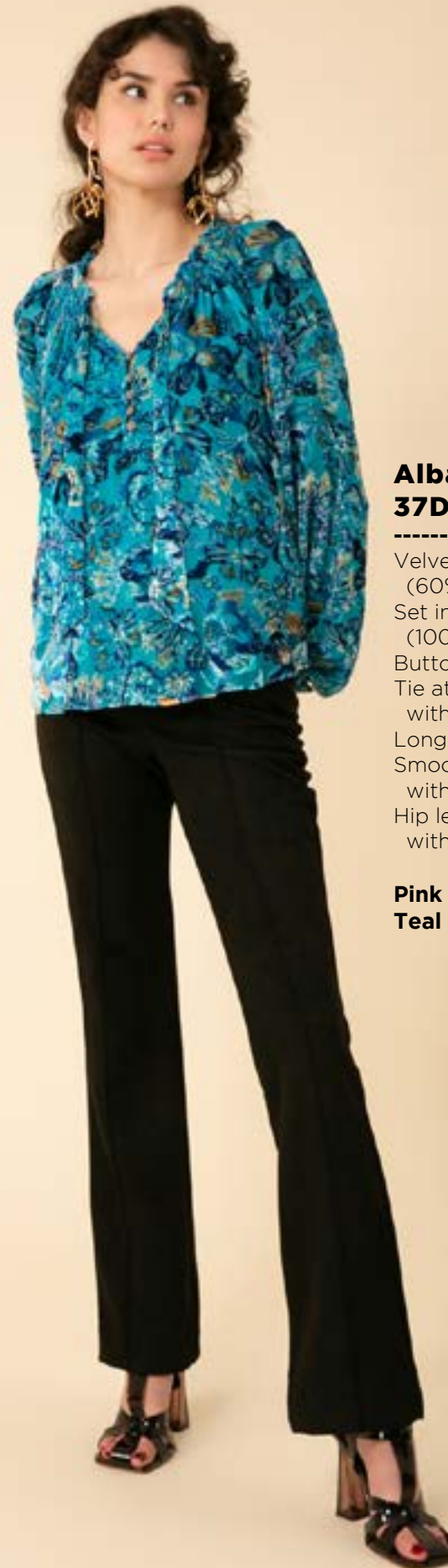
**Pink  
Teal**



**Alba  
37DR2020**

Velvet Burnout  
(60% silk/40% viscose)  
Set in lining at body  
(100% viscose)  
Buttons at front keyhole  
Tie at neck  
with buttons at keyhole  
Long raglan sleeve  
Smocked cuff  
with ruffle  
Hip length  
with curved hem

**Pink  
Teal**



**Alba  
37DR202S**

Velvet Burnout  
(60% silk/40% viscose)  
Set in lining at body  
(100% viscose)  
Buttons at front keyhole  
Tie at neck  
with buttons at keyhole  
Long raglan sleeve  
Smocked cuff  
with ruffle  
Hip length  
with curved hem

**Black**



**Romy  
37DR2040**

Velvet Burnout  
(60% silk/40% viscose)  
Set in lining at body  
(100% viscose)  
Keyhole at front neck  
Scarf ties at side neck  
High hip length  
with curved hem

**Pink  
Teal**



**Romy  
37DR2040**

Velvet Burnout  
(60% silk/40% viscose)  
Set in lining at body  
(100% viscose)  
Keyhole at front neck  
Scarf ties at side neck  
High hip length  
with curved hem

**Pink  
Teal**



**Romy  
37DR204S**

Velvet Burnout  
(60% silk/40% viscose)  
Set in lining at body  
(100% viscose)  
Keyhole at front neck  
Scarf ties at side neck  
High hip length  
with curved hem

**Black**



**Mia**  
**37DR6020**

Velvet Burnout  
(60% silk/40% viscose)  
Set in lining at body  
(100% viscose)  
Balloon sleeve  
with elastic at opening  
Slim fit body  
with invisible zip  
Self covered belt included  
Midi length (45" HPS)

**Pink**  
**Teal**



**Mia**  
**37DR6020**

Velvet Burnout  
(60% silk/40% viscose)  
Set in lining at body  
(100% viscose)  
Balloon sleeve  
with elastic at opening  
Slim fit body  
with invisible zip  
Self covered belt included  
Midi length (45" HPS)

**Pink**  
**Teal**

**Mia**  
**37DR602S**

Velvet Burnout  
(60% silk/40% viscose)  
Set in lining at body  
(100% viscose)  
Balloon sleeve  
with elastic at opening  
Slim fit body  
with invisible zip  
Self covered belt included  
Midi length (45" HPS)

**Black**



**Lina**  
**37DR6040**

Velvet Burnout  
(60% silk/40% viscose)  
Set in lining at body  
(100% viscose)  
Smocking around neck  
Buttons at front keyhole  
Long sleeve with elastic  
Voluminous tiered skirt  
Maxi length (58" HPS)

**Pink**  
**Teal**



**Lina**  
**37DR6040**

Velvet Burnout  
(60% silk/40% viscose)  
Set in lining at body  
(100% viscose)  
Smocking around neck  
Buttons at front keyhole  
Long sleeve with elastic  
Voluminous tiered skirt  
Maxi length (58" HPS)

**Pink**  
**Teal**





**Lina**  
**37DR604S**

-----  
Velvet Burnout  
(60% silk/40% viscose)  
Set in lining at body  
(100% viscose)  
Smocking around neck  
Buttons at front keyhole  
Long sleeve with elastic  
Voluminous tiered skirt  
Maxi length (58" HPS)

**Black**





Breathe Easy

**Lou**  
**37EB2020**

-----  
Twill (100% rayon)  
Buttons at front neck  
Voluminous kimono  
sleeve with elastic cuff  
Smocking at waist  
High hip length

**Black**  
**Blue**



**Lou**  
**37EB2020**

-----  
Twill (100% rayon)  
Buttons at front neck  
Voluminous kimono  
sleeve with elastic cuff  
Smocking at waist  
High hip length

**Black**  
**Blue**



**Julia**  
**37EB2040**

-----  
Matte jersey  
(96% polyester/  
4% spandex)  
Buttons at front boy  
Long sleeve with cuff  
Slim easy fit body  
Low hip length

**Black**  
**Blue**



**Julia**  
**37EB2040**

-----  
Matte jersey  
(96% polyester/  
4% spandex)  
Buttons at front boy  
Long sleeve with cuff  
Slim easy fit body  
Low hip length

**Black**  
**Blue**





**Lena  
37EB5020**

-----  
Corduroy  
(100% cotton)  
Pockets at hips  
Flat front waist  
with elastic back  
Slim fit leg  
Ankle length  
(29" Inseam)

**Black  
Camel  
Navy  
Rust**



**Lena  
37EB5020**

-----  
Corduroy  
(100% cotton)  
Pockets at hips  
Flat front waist  
with elastic back  
Slim fit leg  
Ankle length  
(29" Inseam)

**Black  
Camel  
Navy  
Rust**



**Lena  
37EB5020**

-----  
Corduroy  
(100% cotton)  
Pockets at hips  
Flat front waist  
with elastic back  
Slim fit leg  
Ankle length  
(29" Inseam)

**Black  
Camel  
Navy  
Rust**

**Chloé**  
**37EB6020**

Matte jersey  
(96% polyester/  
4% spandex)  
Mesh lining  
(95% nylon/8% spandex)  
Pleat at front under placket  
Full length sleeve with cuff  
Above the knee length  
(35.5" HPS)  
Deep hem added  
to adjust length



**36AU202B**

(BEADED)

Hand beading  
on neckline

**Black**  
**Blue**  
**Raspberry**

**Chloé**  
**37EB6020**

Matte jersey  
(96% polyester/  
4% spandex)  
Mesh lining  
(95% nylon/8% spandex)  
Pleat at front under placket  
Full length sleeve with cuff  
Above the knee length  
(35.5" HPS)  
Deep hem added  
to adjust length

**36AU202B**

(BEADED)

Hand beading  
on neckline

**Black**  
**Blue**  
**Raspberry**



**Chloé**  
**37EB6020**

Matte jersey  
(96% polyester/  
4% spandex)  
Mesh lining  
(95% nylon/8% spandex)  
Pleat at front under placket  
Full length sleeve with cuff  
Above the knee length  
(35.5" HPS)  
Deep hem added  
to adjust length

**36AU202B**

(BEADED)

Hand beading  
on neckline

**Black**  
**Blue**  
**Raspberry**





**Agathe**  
**37EB6040**

-----  
Twill (100% rayon)  
Slim fit through rib cage  
7/8 length sleeve with ruffle  
Tiered swingy fit at skirt  
Above the knee length:  
35.5" HPS

**Black**  
**Blue**



**Agathe**  
**37EB6040**

-----  
Twill (100% rayon)  
Slim fit through rib cage  
7/8 length sleeve with ruffle  
Tiered swingy fit at skirt  
Above the knee length:  
35.5" HPS

**Black**  
**Blue**  
**v**

**Agathe**  
**37EB604D**

-----  
Twill (100% rayon)  
Slim fit through  
rib cage  
7/8 length sleeve  
with ruffle  
Tiered swingy fit  
at skirt  
Ankle length:  
50.5" HPS

**Black**



**Lea**  
**37EB7020**

-----  
Corduroy  
(100% cotton)  
Full lined  
(100% viscose challis)  
Buttons at front  
Mid-thigh length

**Black**  
**Camel**  
**Navy**  
**Rust**



**Lea**  
**37EB7020**

-----  
Corduroy  
(100% cotton)  
Full lined  
(100% viscose challis)  
Buttons at front  
Mid-thigh length

**Black**  
**Camel**  
**Navy**  
**Rust**



**Lea**  
**37EB7020**

-----  
Corduroy  
(100% cotton)  
Full lined  
(100% viscose challis)  
Buttons at front  
Mid-thigh length

**Black**  
**Camel**  
**Navy**  
**Rust**



A woman with long, wavy brown hair and bangs stands in a room with green walls. She is wearing a vibrant red suit consisting of a jacket and matching trousers, over a dark floral-patterned top. Her hands are tucked into her pockets. Behind her is a framed painting of a group of people. To the left, an arched doorway with red curtains leads to another room with a window and a patterned rug. The scene is lit with warm, directional light from the right, creating strong shadows.

Down  
To  
Earth

**Juliette**  
**37NR2020**

-----  
Chiffon (100% rayon)  
Body is lined  
(100% viscose)  
Buttons at front neck  
Long full sleeve  
with smocked cuff  
Low hip length  
with curved hem

**Black**  
**Gold**



**Juliette**  
**37NR2020**

-----  
Chiffon (100% rayon)  
Body is lined  
(100% viscose)  
Buttons at front neck  
Long full sleeve  
with smocked cuff  
Low hip length  
with curved hem

**Black**  
**Gold**

**Inaya**  
**37NR2040**

-----  
Soft jersey  
(95% micro modal/  
5% spandex)  
Twisted drape  
at front bust, slim fit  
Voluminous long sleeve  
with cuff  
Swingy skirt below  
waistband  
High hip length

**Black**  
**Gold**



**Inaya**  
**37NR2040**

Soft jersey  
(95% micro modal/  
5% spandex)  
Twisted drape  
at front bust, slim fit  
Voluminous long sleeve  
with cuff  
Swingy skirt below  
waistband  
High hip length

**Black**  
**Gold**



**Lilou**  
**37NR2060**

Soft jersey  
(95% micro modal/  
5% spandex)  
Slim fit body & sleeve  
Mid-rise turtleneck  
Hip length body

**Black**  
**Gold**



**Lilou**  
**37NR2060**

Soft jersey  
(95% micro modal/  
5% spandex)  
Slim fit body & sleeve  
Mid-rise turtleneck  
Hip length body

**Black**  
**Gold**







**Lilou**  
**37NR206S**

Soft jersey  
(95% micro modal/  
5% spandex)  
Slim fit body & sleeve  
Mid-rise turtleneck  
Hip length body

**Black**  
**Emerald**  
**Wine**



**Lilou**  
**37NR206S**

Soft jersey  
(95% micro modal/  
5% spandex)  
Slim fit body & sleeve  
Mid-rise turtleneck  
Hip length body

**Black**  
**Emerald**  
**Wine**



**Lilou**  
**37NR206S**

Soft jersey  
(95% micro modal/  
5% spandex)  
Slim fit body & sleeve  
Mid-rise turtleneck  
Hip length body

**Black**  
**Emerald**  
**Wine**

**Zoe**  
**37NR6020**

-----  
Soft woven  
(100% viscose)  
Asymmetrical trim  
detailing  
Swingy voluminous tiers  
Long sleeve  
with smocked cuff  
Above the knee length  
(35.5" HPS)

**Black**  
**Gold**



**Zoe**  
**37NR6020**

-----  
Soft woven  
(100% viscose)  
Asymmetrical trim  
detailing  
Swingy voluminous tiers  
Long sleeve  
with smocked cuff  
Above the knee length  
(35.5" HPS)

**Black**  
**Gold**





**Jeanne  
37NR6040**

-----  
Lurex Jacquard  
(100% polyester)  
Long sleeve  
with smocked cuff  
Tiered voluminous skirt  
with slit at lower tiers  
Ankle length with hi/low  
(49" HPS at front,  
52" at back)

**Black  
Gold**



**Jeanne  
37NR6040**

-----  
Lurex Jacquard  
(100% polyester)  
Long sleeve  
with smocked cuff  
Tiered voluminous skirt  
with slit at lower tiers  
Ankle length with hi/low  
(49" HPS at front,  
52" at back)

**Black  
Gold**



A fashion advertisement featuring two women. The woman on the left has long, wavy blonde hair and is wearing a dark brown, long-sleeved top with intricate gold and brown geometric patterns. The woman on the right has long, wavy dark hair and is wearing a dark brown, long-sleeved top with gold floral embroidery. They are standing outdoors against a clear blue sky. The text 'Open Road' is overlaid in the upper right corner.

# Open Road



**Leonie**  
**37RD2020**

-----  
BLK/BRN: Embroidered crepe  
(55% viscose/45% rayon)  
BLU: Embroidered chambray  
(100% cotton)  
Yoke at front with buttons  
Hip length with curved hem

**Black**  
**Brown**



**Leonie**  
**37RD2020**

BLK/BRN: Embroidered crepe  
(55% viscose/45% rayon)  
BLU: Embroidered chambray  
(100% cotton)  
Yoke at front with buttons  
Hip length with curved hem

**Black**  
**Brown**



**Charlie**  
**37RD3020**

Wool Blend Jacquard Sweater  
(58% Acrylic/  
30% Polyester/10% wool/  
2% spandex)  
Shawl collar, fringe at edges  
Wrap body with belt  
Low hip length (28" HPS)

**Black**  
**Blue**  
**Ivory**





**Charlie**  
**37RD3020**

Wool Blend Jacquard Sweater  
(58% Acrylic/  
30% Polyester/10% wool/  
2% spandex)  
Shawl collar, fringe at edges  
Wrap body with belt  
Low hip length (28" HPS)

**Black**  
**Blue**  
**Ivory**



**Charlie**  
**37RD3020**

Wool Blend Jacquard Sweater  
(58% Acrylic/  
30% Polyester/10% wool/  
2% spandex)  
Shawl collar, fringe at edges  
Wrap body with belt  
Low hip length (28" HPS)

**Black**  
**Blue**  
**Ivory**



**Anais**  
**37RD3040**

Wool Blend Jacquard Sweater  
(58% Acrylic/  
30% Polyester/10% wool/  
2% spandex)  
Shawl collar, fringe at edges  
Wrap body with belt  
Midi length (46" HPS)

**Black**  
**Blue**  
**Ivory**



**Anais**  
**37RD3040**

Wool Blend Jacquard Sweater  
(58% Acrylic/  
30% Polyester/10% wool/  
2% spandex)  
Shawl collar, fringe at edges  
Wrap body with belt  
Midi length (46" HPS)

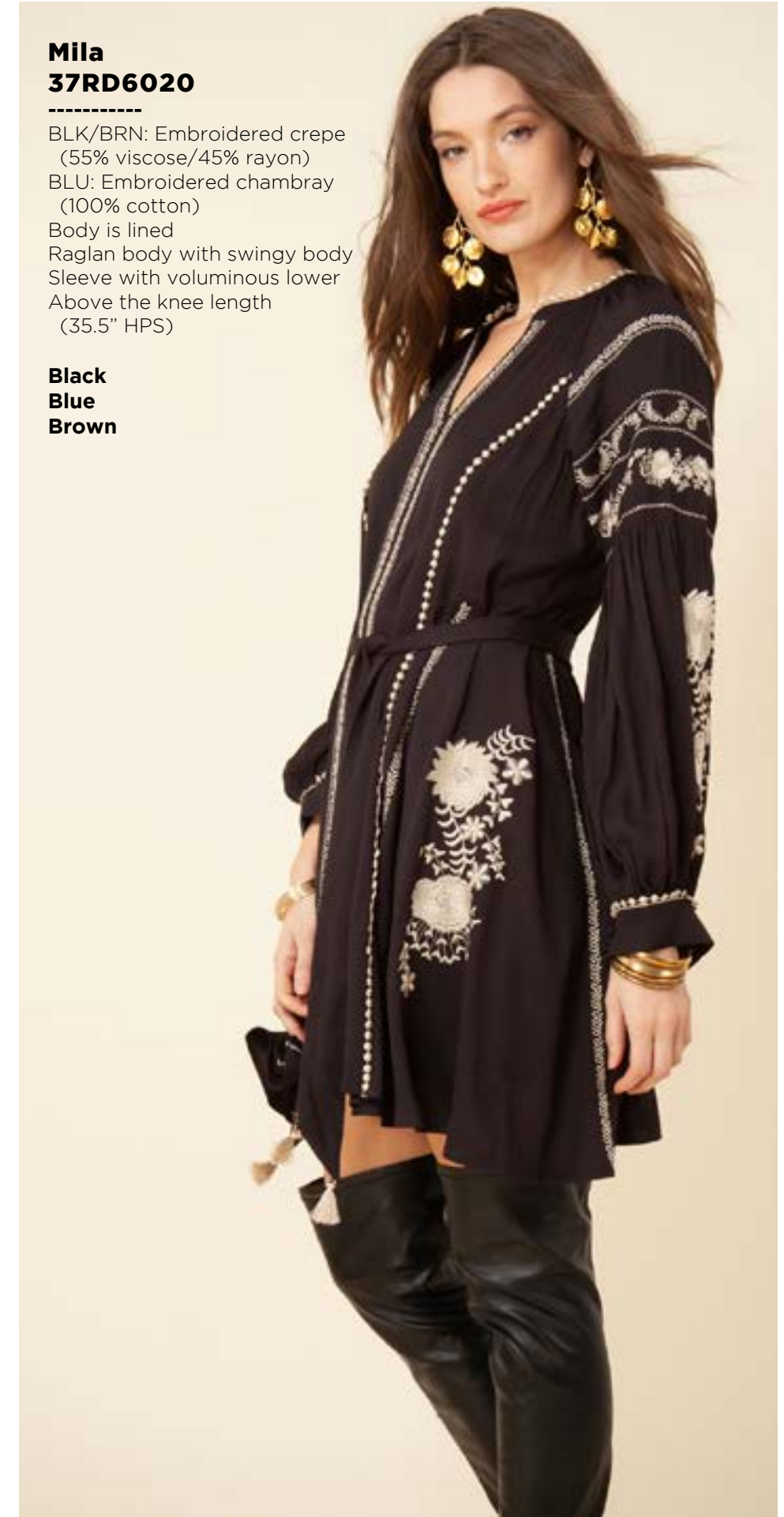
**Black**  
**Blue**  
**Ivory**



**Anais**  
**37RD3040**

Wool Blend Jacquard Sweater  
(58% Acrylic/  
30% Polyester/10% wool/  
2% spandex)  
Shawl collar, fringe at edges  
Wrap body with belt  
Midi length (46" HPS)

**Black**  
**Blue**  
**Ivory**



**Mila**  
**37RD6020**

BLK/BRN: Embroidered crepe  
(55% viscose/45% rayon)  
BLU: Embroidered chambray  
(100% cotton)  
Body is lined  
Raglan body with swingy body  
Sleeve with voluminous lower  
Above the knee length  
(35.5" HPS)

**Black**  
**Blue**  
**Brown**





**Mila**  
**37RD6020**

BLK/BRN: Embroidered crepe  
(55% viscose/45% rayon)  
BLU: Embroidered chambray  
(100% cotton)  
Body is lined  
Raglan body with swingy body  
Sleeve with voluminous lower  
Above the knee length  
(35.5" HPS)

**Black**  
**Blue**  
**Brown**



**Mila**  
**37RD6020**

BLK/BRN: Embroidered crepe  
(55% viscose/45% rayon)  
BLU: Embroidered chambray  
(100% cotton)  
Body is lined  
Raglan body with swingy body  
Sleeve with voluminous lower  
Above the knee length  
(35.5" HPS)

**Black**  
**Blue**  
**Brown**



**Luna**  
**37RD6040**

BLK/BRN: Embroidered crepe  
(55% viscose/45% rayon)  
BLU: Embroidered chambray  
(100% cotton)  
Body is lined  
Easy fit, slim through rib cage  
Tiered, swingy fit at skirt  
Long sleeve  
with tier at lower part  
Cuff at wrist  
Above the knee length  
(35.5" HPS)

**Black**  
**Blue**  
**Brown**



**Luna  
37RD6040**

-----  
BLK/BRN: Embroidered crepe  
(55% viscose/45% rayon)  
BLU: Embroidered chambray  
(100% cotton)  
Body is lined  
Easy fit, slim through rib cage  
Tiered, swingy fit at skirt  
Long sleeve  
with tier at lower part  
Cuff at wrist  
Above the knee length  
(35.5" HPS)

**Black  
Blue  
Brown**



**Luna  
37RD6040**

-----  
BLK/BRN: Embroidered crepe  
(55% viscose/45% rayon)  
BLU: Embroidered chambray  
(100% cotton)  
Body is lined  
Easy fit, slim through rib cage  
Tiered, swingy fit at skirt  
Long sleeve  
with tier at lower part  
Cuff at wrist  
Above the knee length  
(35.5" HPS)

**Black  
Blue  
Brown**

**Luna**  
**37RD604M**

BLK/BRN: Embroidered crepe  
(55% viscose/45% rayon)  
BLU: Embroidered chambray  
(100% cotton)  
Body is lined  
Easy fit, slim through rib cage  
Tiered, swingy fit at skirt  
Long sleeve  
with tier at lower part  
Cuff at wrist  
Maxi length (58" HPS)

**Black**  
**Brown**



**Luna**  
**37RD604M**

BLK/BRN: Embroidered crepe  
(55% viscose/45% rayon)  
BLU: Embroidered chambray  
(100% cotton)  
Body is lined  
Easy fit, slim through rib cage  
Tiered, swingy fit at skirt  
Long sleeve  
with tier at lower part  
Cuff at wrist  
Maxi length (58" HPS)

**Black**  
**Brown**



# Retro Rules





**Adele  
37UE2020**  
-----

Matte jersey  
(96% polyester/  
4% spandex)  
Ultrasuede contrasts  
(97% polyester/  
3% spandex)  
Equestrian buckles  
at neck (not functional)  
Long sleeve  
with snaps at cuffs  
Hip length  
with curved hem

**Ivory  
Navy**



**Adele  
37UE2020**  
-----

Matte jersey  
(96% polyester/  
4% spandex)  
Ultrasuede contrasts  
(97% polyester/  
3% spandex)  
Equestrian buckles  
at neck (not functional)  
Long sleeve  
with snaps at cuffs  
Hip length  
with curved hem

**Ivory  
Navy**

**Victoire**  
**37UE2040**

-----  
Twill  
(55% viscose/  
45% rayon)  
Buttons at front body  
Voluminous sleeve  
with cuff  
Hip length  
with curved hem

**Ivory**  
**Navy**



**Victoire**  
**37UE2040**

-----  
Twill  
(55% viscose/  
45% rayon)  
Buttons at front body  
Voluminous sleeve  
with cuff  
Hip length  
with curved hem

**Ivory**  
**Navy**





**Sofia**  
**37UE2060**

-----  
Quilted Twill  
(55% viscose/  
45% rayon)  
Snaps at front body  
Pockets at front  
Long sleeve  
High hip length

**Ivory**  
**Navy**



**Sofia**  
**37UE2060**

-----  
Quilted Twill  
(55% viscose/  
45% rayon)  
Snaps at front body  
Pockets at front  
Long sleeve  
High hip length

**Ivory**  
**Navy**

**Inès**  
**37UE3020**

Wool Blend Jacquard Sweater  
(58% Acrylic/ 30% Polyester/  
10% wool/ 2%spandex)  
Shawl collar, fringe at edges  
Wrap front body  
with buttons at hips  
High hip length (22" HPS)

**Grey**  
**Ivory**



**Inès**  
**37UE3020**

Wool Blend Jacquard Sweater  
(58% Acrylic/ 30% Polyester/  
10% wool/ 2%spandex)  
Shawl collar, fringe at edges  
Wrap front body  
with buttons at hips  
High hip length (22" HPS)

**Grey**  
**Ivory**



**Diane**  
**37UE3040**

Wool Blend Jacquard Sweater  
(58% Acrylic/ 30% Polyester/  
10% wool/ 2%spandex)  
Shawl collar, fringe at edges  
Wrap front body with belt  
Midi length (46" HPS)

**Grey**  
**Ivory**





**Diane**  
**37UE3040**

Wool Blend Jacquard Sweater  
(58% Acrylic/ 30% Polyester/  
10% wool/ 2%spandex)  
Shawl collar, fringe at edges  
Wrap front body with belt  
Midi length (46" HPS)

**Grey**  
**Ivory**





**Camille  
37UE5020**

-----  
Twill  
(55% viscose/45%  
rayon)  
Pockets at hips  
Flat front waist  
with elastic back  
Slim fit leg  
Tie at waist  
Ankle length  
(29" Inseam)

**Ivory  
Navy**



**Camille  
37UE5020**

-----  
Twill  
(55% viscose/45%  
rayon)  
Pockets at hips  
Flat front waist  
with elastic back  
Slim fit leg  
Tie at waist  
Ankle length  
(29" Inseam)

**Ivory  
Navy**

**Victoria  
37UE5040**

-----  
Stretch ultrasuede  
(97% polyester/  
3% spandex)  
Pintuck at front leg  
High waist  
with functional fly  
Tie at waist (removable)  
Flared leg  
Full length (32" Inseam)

**Black  
Camel  
Chocolate  
Eggplant  
Navy**



**Victoria  
37UE5040**

-----  
Stretch ultrasuede  
(97% polyester/  
3% spandex)  
Pintuck at front leg  
High waist  
with functional fly  
Tie at waist (removable)  
Flared leg  
Full length (32" Inseam)

**Black  
Camel  
Chocolate  
Eggplant  
Navy**



**Victoria  
37UE5040**

-----  
Stretch ultrasuede  
(97% polyester/  
3% spandex)  
Pintuck at front leg  
High waist  
with functional fly  
Tie at waist (removable)  
Flared leg  
Full length (32" Inseam)

**Black  
Camel  
Chocolate  
Eggplant  
Navy**



**Victoria**  
**37UE5040**

Stretch ultrasuede  
(97% polyester/  
3% spandex)  
Pintuck at front leg  
High waist  
with functional fly  
Tie at waist (removable)  
Flared leg  
Full length (32" Inseam)

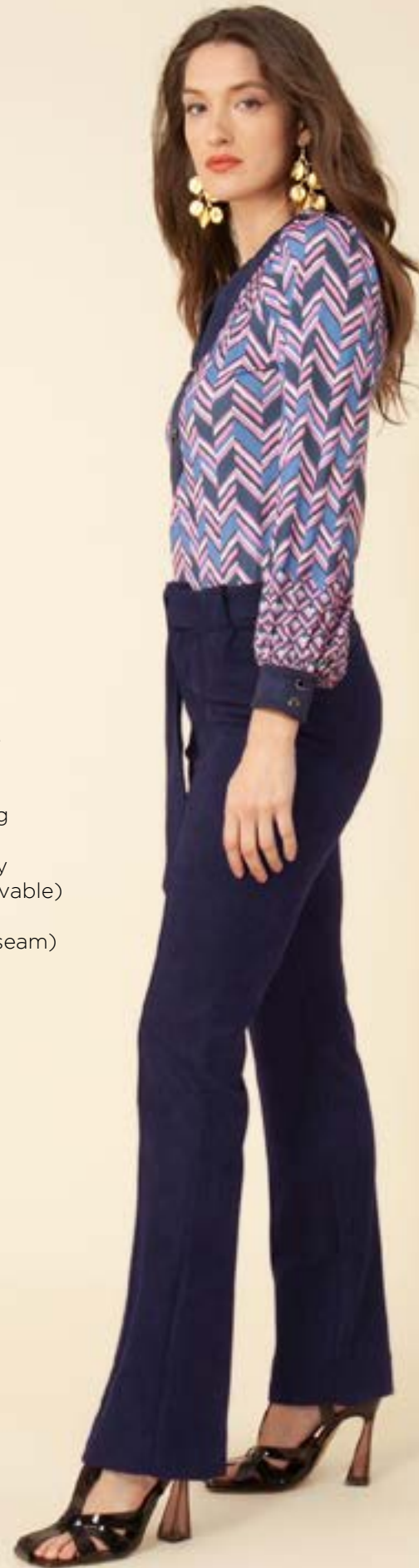
**Black**  
**Camel**  
**Chocolate**  
**Eggplant**  
**Navy**



**Victoria**  
**37UE5040**

Stretch ultrasuede  
(97% polyester/  
3% spandex)  
Pintuck at front leg  
High waist  
with functional fly  
Tie at waist (removable)  
Flared leg  
Full length (32" Inseam)

**Black**  
**Camel**  
**Chocolate**  
**Eggplant**  
**Navy**



**Lucie**  
**37UE6020**

Twill  
(55% viscose/  
45% rayon)  
Ultrasuede contrasts  
(97% polyester/  
3% spandex)  
Metal zip at front neck  
Snaps at pockets/cuff  
Above the knee length  
(35.5" HPS)

**Ivory**  
**Navy**



**Lucie**  
**37UE6020**

-----  
Twill  
(55% viscose/  
45% rayon)  
Ultrasuede contrasts  
(97% polyester/  
3% spandex)  
Metal zip at front neck  
Snaps at pockets/cuff  
Above the knee length  
(35.5" HPS)

**Ivory**  
**Navy**



**Margaux**  
**37UE6040**

-----  
Matte jersey  
(96% polyester/  
4% spandex)  
Snaps at front body  
Belt with metal d-ring  
at waist  
Long sleeve  
with snap cuff  
Midi-length (46" HPS)

**Ivory**  
**Navy**



**Margaux**  
**37UE6040**

-----  
Matte jersey  
(96% polyester/  
4% spandex)  
Snaps at front body  
Belt with metal d-ring  
at waist  
Long sleeve  
with snap cuff  
Midi-length (46" HPS)

**Ivory**  
**Navy**





**Romane  
37UE6060**

-----  
Stretch ultrasuede  
(97% polyester/  
3% span)  
Slim easy, fit  
Buttons at front body  
Belt with D-ring at waist  
Midi length (44" HPS)

**Black  
Camel  
Chocolate  
Eggplant**



**Romane  
37UE6060**

-----  
Stretch ultrasuede  
(97% polyester/  
3% span)  
Slim easy, fit  
Buttons at front body  
Belt with D-ring at waist  
Midi length (44" HPS)

**Black  
Camel  
Chocolate  
Eggplant**



**Romane  
37UE6060**

-----  
Stretch ultrasuede  
(97% polyester/  
3% span)  
Slim easy, fit  
Buttons at front body  
Belt with D-ring at waist  
Midi length (44" HPS)

**Black  
Camel  
Chocolate  
Eggplant**



**Romane  
37UE6060**

-----  
Stretch ultrasuede  
(97% polyester/  
3% span)  
Slim easy, fit  
Buttons at front body  
Belt with D-ring at waist  
Midi l length (44" HPS)

**Black  
Camel  
Chocolate  
Eggplant**



# HALE BOB

LOS ANGELES

Season 8





# Paradise Found





**Charlotte  
38AR2020**  
-----

Crepe de chine  
(100% silk)  
Flower enamel buttons  
at neck  
Voluminous sleeve with cuff  
Hip length

**Blue  
Gold**



**Charlotte  
38AR2020**  
-----

Crepe de chine  
(100% silk)  
Flower enamel buttons at neck  
Voluminous sleeve with cuff  
Hip length

**Blue  
Gold**



**Alix  
38AR2040**  
-----

Viscose/rayon  
charmeuse  
(54% rayon/  
46% viscose)  
Elastic at neck  
with tie at front  
Flutter sleeves  
Easy fit body  
with curved hem

**Blue  
Gold**



**Alix**  
**38AR2040**

Viscose/rayon  
charmeuse  
(54% rayon/  
46% viscose)  
Elastic at neck  
with tie at front  
Flutter sleeves  
Easy fit body  
with curved hem

**Blue**  
**Gold**



**Nour**  
**38AR3020**

Wool Blend Jacquard Sweater  
(58% Acrylic/ 30% Polyester/  
10% wool/ 2%spandex)  
Oversized cardigan  
with voluminous sleeve buttons  
Buttons at front  
Hip length (26" HPS)

**Blue**  
**Ivory**



**Nour**  
**38AR3020**

Wool Blend Jacquard Sweater  
(58% Acrylic/ 30% Polyester/  
10% wool/ 2%spandex)  
Oversized cardigan  
with voluminous sleeve buttons  
Buttons at front  
Hip length (26" HPS)

**Blue**  
**Ivory**

**\$118**

**Maelle**  
**38AR3040**

Wool Blend Jacquard Sweater  
(58% Acrylic/ 30% Polyester/  
10% wool/ 2%spandex)  
Shawl collar, fringe at edges  
Wrap body with belt  
Midi length (46" HPS)

**Black/Blue**  
**Black/Brown**



**Maelle**  
**38AR3040**

Wool Blend Jacquard Sweater  
(58% Acrylic/ 30% Polyester/  
10% wool/ 2%spandex)  
Shawl collar, fringe at edges  
Wrap body with belt  
Midi length (46" HPS)

**Black/Blue**  
**Black/Brown**



**Lyana**  
**38AR5020**

Stretch Ponte  
(63% viscose/  
32% nylon/ 5% span)  
Grosgrain ribbon trim  
at side legs  
Functional zip at front  
High waist  
Pintuck at front leg  
Slim fit through thigh  
to flare  
Full length (31" Inseam)

**Black**  
**Brown**





**Lyana  
38AR5020**  
-----

Stretch Ponte  
(63% viscose/  
32% nylon/ 5% span)  
Grosgrain ribbon trim  
at side legs  
Functional zip at front  
High waist  
Pintuck at front leg  
Slim fit through thigh  
to flare  
Full length (31" Inseam)

**Black  
Brown**

**Margot  
38AR6020**  
-----

Washed chiffon  
(70% rayon/30% silk)  
Jersey lining  
(95% viscose/  
5% spandex)  
Elastic smocking  
at waist  
Long sleeve  
with smocked cuff  
Tier at lower skirt  
Above the knee length  
(35.5" HPS)

**Blue  
Gold**



**Margot  
38AR6020**  
-----

Washed chiffon  
(70% rayon/30% silk)  
Jersey lining  
(95% viscose/  
5% spandex)  
Elastic smocking  
at waist  
Long sleeve  
with smocked cuff  
Tier at lower skirt  
Above the knee length  
(35.5" HPS)

**Blue  
Gold**

**Louna**  
**38AR6030**

-----  
Matte jersey  
(96% polyester/4% spandex)  
Mesh lining  
(95% nylon/8% spandex)  
Pleat at front under placket  
Full length sleeve with cuff  
Above the knee length  
(35.5" HPS)  
Deep hem added  
to adjust length

**38AR603B**

(BEADED)

-----  
Hand beading  
on neckline

**Blue**  
**Gold**



**Louna**  
**38AR6030**

-----  
Matte jersey  
(96% polyester/4% spandex)  
Mesh lining  
(95% nylon/8% spandex)  
Pleat at front under placket  
Full length sleeve with cuff  
Above the knee length  
(35.5" HPS)  
Deep hem added  
to adjust length

**38AR603B**

(BEADED)

-----  
Hand beading  
on neckline

**Blue**  
**Gold**



**Mya**  
**38AR6040**

-----  
Crepe de chine  
(100% rayon)  
Flounce ruffle at neck  
7/8 length slim sleeve  
with flounce  
Flower enamel buttons  
front body  
Buttons function only at top  
and bottom of opening  
Pockets at hips  
Invisible zip at back  
Maxi length (58" HPS)

**Blue**  
**Gold**

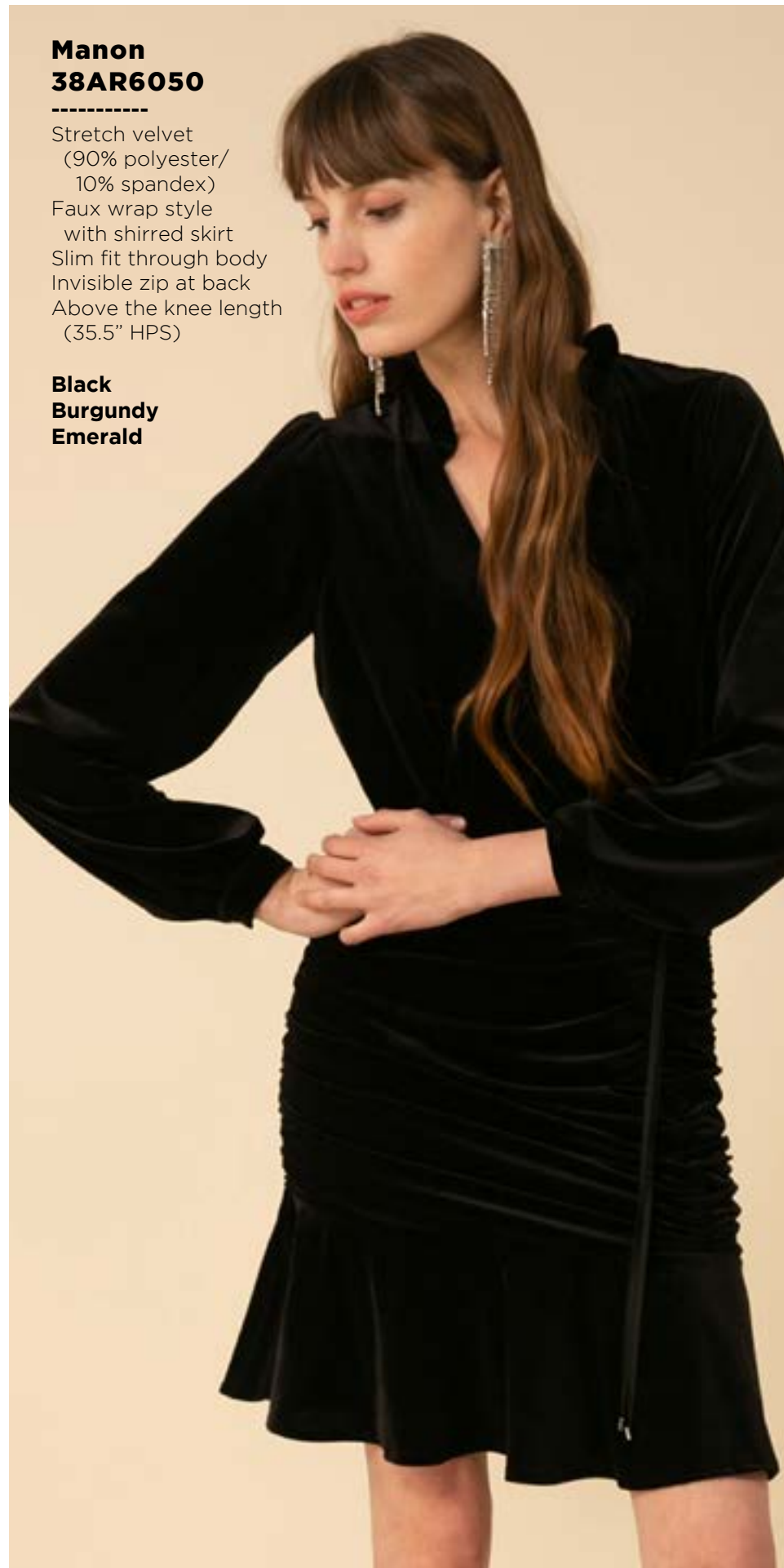




**Mya**  
**38AR6040**

-----  
Crepe de chine  
(100% rayon)  
Flounce ruffle at neck  
7/8 length slim sleeve  
with flounce  
Flower enamel buttons  
front body  
Buttons function only at top  
and bottom of opening  
Pockets at hips  
Invisible zip at back  
Maxi length (58" HPS)

**Blue**  
**Gold**



**Manon**  
**38AR6050**

-----  
Stretch velvet  
(90% polyester/  
10% spandex)  
Faux wrap style  
with shirred skirt  
Slim fit through body  
Invisible zip at back  
Above the knee length  
(35.5" HPS)

**Black**  
**Burgundy**  
**Emerald**



**Manon**  
**38AR6050**

-----  
Stretch velvet  
(90% polyester/  
10% spandex)  
Faux wrap style  
with shirred skirt  
Slim fit through body  
Invisible zip at back  
Above the knee length  
(35.5" HPS)

**Black**  
**Burgundy**  
**Emerald**



**Manon**  
**38AR6050**

-----  
Stretch velvet  
(90% polyester/  
10% spandex)  
Faux wrap style  
with shirred skirt  
Slim fit through body  
Invisible zip at back  
Above the knee length  
(35.5" HPS)

**Black**  
**Burgundy**  
**Emerald**



**Lya**  
**38AR6060**

-----  
Stretch velvet  
(90% polyester/  
10% spandex)  
Shirring at front & back body  
Adjustable shirring at bust  
Slim fit body with voluminous  
flounces at hem  
Maxi length (58" HPS)

**Black**  
**Burgundy**  
**Emerald**



**Lya**  
**38AR6060**

-----  
Stretch velvet  
(90% polyester/  
10% spandex)  
Shirring at front & back body  
Adjustable shirring at bust  
Slim fit body with voluminous  
flounces at hem  
Maxi length (58" HPS)

**Black**  
**Burgundy**  
**Emerald**



**Lya**  
**38AR6060**

-----  
Stretch velvet  
(90% polyester/  
10% spandex)  
Shirring at front & back body  
Adjustable shirring at bust  
Slim fit body with voluminous  
flounces at hem  
Maxi length (58" HPS)

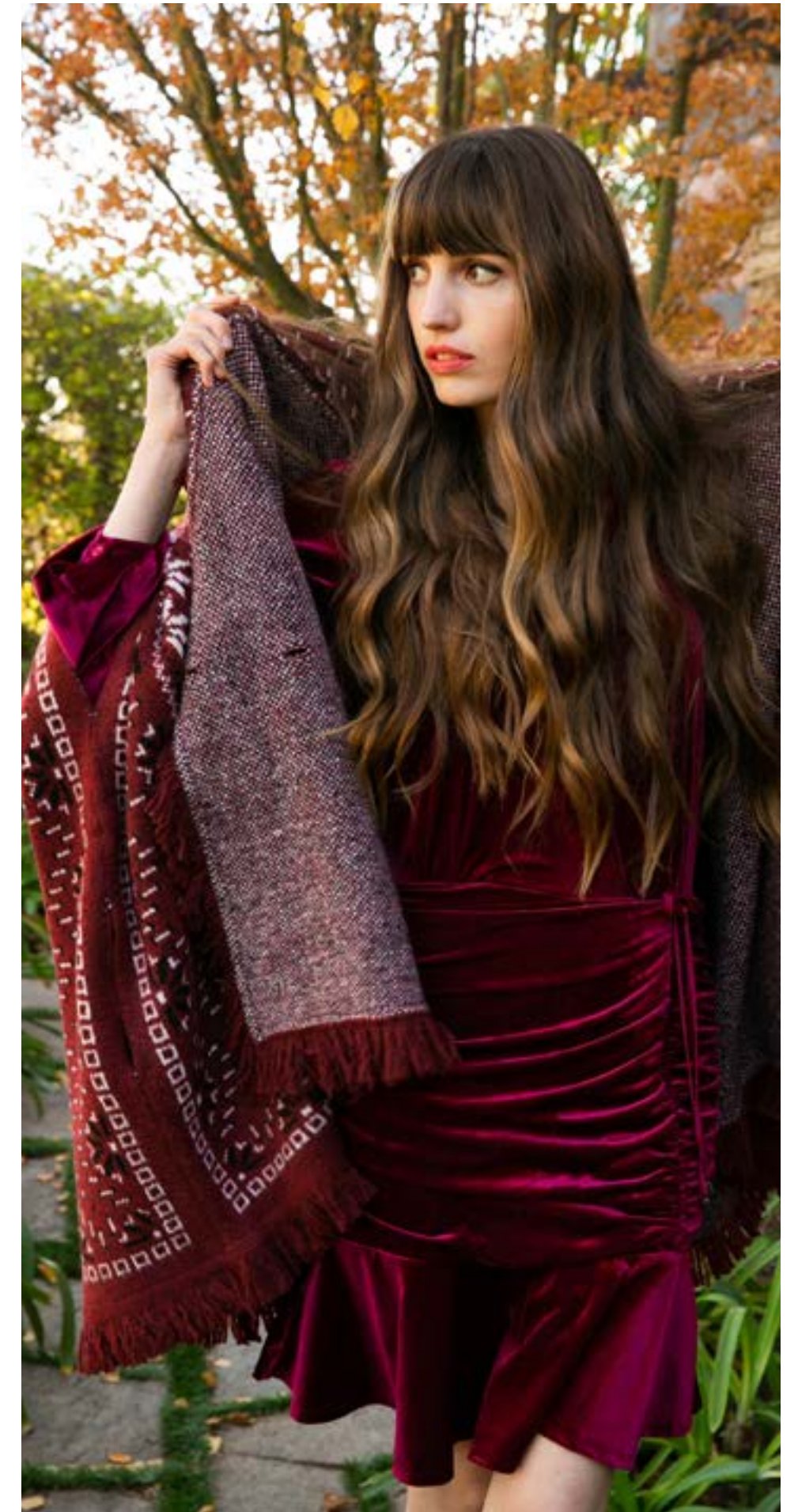
**Black**  
**Burgundy**  
**Emerald**



**Elise**  
**38AR9810**

-----  
Habotai (100% Silk)  
36" Square

**Blue**





Rise  
and  
Shine

**Emy**  
**38EH2020**

Washed charmeuse  
(54% rayon/46% viscose)  
Voluminous sleeve  
with pleating at shoulder  
Elastic at wrist  
Low hip length  
with curved hem

**Blue**  
**Raspberry**



**Ava**  
**38EH5020**

Washed charmeuse  
(54% rayon/46% viscose)  
High waist with elastic  
Pockets at hips  
Easy full leg  
Full length  
(30" Inseam)

**Blue**  
**Raspberry**

**Ava**  
**38EH5020**

Washed charmeuse  
(54% rayon/46% viscose)  
High waist with elastic  
Pockets at hips  
Easy full leg  
Full length  
(30" Inseam)

**Blue**  
**Raspberry**



**Emy**  
**38EH2020**

Washed charmeuse  
(54% rayon/46% viscose)  
Voluminous sleeve  
with pleating at shoulder  
Elastic at wrist  
Low hip length  
with curved hem

**Blue**  
**Raspberry**



**Capucine**  
**38EH2030**

-----  
Lurex crinkle mesh  
Body is lined  
(100% viscose)  
Voluminous sleeve  
with pleating at shoulder  
Elastic at wrist  
Low hip length  
with curved hem

**Black**  
**Blue**  
**Champagne**

**Clemence**  
**38EH5030**

-----  
Lurex crinkle mesh  
Fully lined  
(100% viscose)  
High waist with elastic  
Pockets at hips  
Easy full leg  
Full length  
(30" Inseam)

**Black**  
**Blue**  
**Champagne**

**Capucine**  
**38EH2030**

-----  
Lurex crinkle mesh  
Body is lined  
(100% viscose)  
Voluminous sleeve  
with pleating at shoulder  
Elastic at wrist  
Low hip length  
with curved hem

**Black**  
**Blue**  
**Champagne**



**Clemence**  
**38EH5030**

-----  
Lurex crinkle mesh  
Fully lined  
(100% viscose)  
High waist with elastic  
Pockets at hips  
Easy full leg  
Full length  
(30" Inseam)

**Black**  
**Blue**  
**Champagne**

**Capucine**  
**38EH2030**

-----  
Lurex crinkle mesh  
Body is lined  
(100% viscose)  
Voluminous sleeve  
with pleating at shoulder  
Elastic at wrist  
Low hip length  
with curved hem

**Black**  
**Blue**  
**Champagne**



**Clemence**  
**38EH5030**

-----  
Lurex crinkle mesh  
Fully lined  
(100% viscose)  
High waist with elastic  
Pockets at hips  
Easy full leg  
Full length  
(30" Inseam)

**Black**  
**Blue**  
**Champagne**

**Thea**  
**38EH6020**

-----  
Matte jersey  
(96% polyester/4% span)  
Elastic at waist  
7/8 bell sleeve with ruffle  
Tiered voluminous body  
Above the knee length  
(35.5" HPS)

**Blue**  
**Raspberry**





**Thea**  
**38EH6020**

Matte jersey  
(96% polyester/4% span)  
Elastic at waist  
7/8 bell sleeve with ruffle  
Tiered voluminous body  
Above the knee length  
(35.5" HPS)

**Blue**  
**Raspberry**



**Gabrielle**  
**38EH6030**

Lurex crinkle mesh  
Body is lined  
(100% viscose)  
7/8 bell sleeve with ruffle  
Layered ruffle skirt  
Above the knee length  
(35.5" HPS)

**Black**  
**Blue**  
**Champagne**



**Gabrielle**  
**38EH6030**

Lurex crinkle mesh  
Body is lined  
(100% viscose)  
7/8 bell sleeve with ruffle  
Layered ruffle skirt  
Above the knee length  
(35.5" HPS)

**Black**  
**Blue**  
**Champagne**



**Gabrielle**  
**38EH6030**

-----  
Lurex crinkle mesh  
Body is lined  
(100% viscose)  
7/8 bell sleeve with ruffle  
Layered ruffle skirt  
Above the knee length  
(35.5" HPS)

**Black**  
**Blue**  
**Champagne**



**Alma**  
**38EH6040**

-----  
Chiffon  
(100% Polyester)  
Smocking & ruffle at neck  
Hook & eye hidden at front neck  
Elastic smocked waist  
Long sleeve with smocked cuff  
Tiered skirt with slit at lower tiers  
Ankle length at front  
with hi/low hem  
(49" at front, 52" at back)

**Blue**  
**Raspberry**



**Alma**  
**38EH6040**

Chiffon  
(100% Polyester)  
Smocking & ruffle at neck  
Hook & eye hidden at front neck  
Elastic smocked waist  
Long sleeve with smocked cuff  
Tiered skirt with slit at lower tiers  
Ankle length at front  
with hi/low hem  
(49" at front, 52" at back)

**Blue**  
**Raspberry**



**Lyna**  
**38EH6050**

Lurex crinkle mesh  
Body is lined  
(100% viscose)  
Smocking & ruffle at neck  
Hook & eye hidden at front neck  
Elastic smocked waist  
Long sleeve with smocked cuff  
Tiered skirt with slit at lower tiers  
Ankle length at front  
with hi/low hem  
(49" at front, 52" at back)

**Black**  
**Blue**  
**Champagne**





**Lyna**  
**38EH6050**  
-----

Lurex crinkle mesh  
Body is lined  
(100% viscose)  
Smocking & ruffle at neck  
Hook & eye hidden at front neck  
Elastic smocked waist  
Long sleeve with smocked cuff  
Tiered skirt with slit at lower tiers  
Ankle length at front  
with hi/low hem  
(49" at front, 52" at back)

**Black**  
**Blue**  
**Champagne**



**Lyna**  
**38EH6050**  
-----

Lurex crinkle mesh  
Body is lined  
(100% viscose)  
Smocking & ruffle at neck  
Hook & eye hidden  
at front neck  
Elastic smocked waist  
Long sleeve  
with smocked cuff  
Tiered skirt with slit  
at lower tiers  
Ankle length at front  
with hi/low hem  
(49" at front,  
52" at back)

**Black**  
**Blue**  
**Champagne**



Wonder Full

**Alya**  
**38LF2020**

-----  
Embroidered crepe  
(55% viscose/45% rayon)  
Yoke detail at front & back  
Full sleeve with cuff  
Hip length with curved hem

**Black**  
**Emerald**



**Alya**  
**38LF2020**

-----  
Embroidered crepe  
(55% viscose/45% rayon)  
Yoke detail at front & back  
Full sleeve with cuff  
Hip length with curved hem

**Black**  
**Emerald**





**Yasmine**  
**38LF2040**

-----  
Embroidered Twill  
(55% viscose/45% rayon)  
7/8 sleeve with smocked cuff  
Elastic at waist with full skirt  
High hip length

**Black**  
**Emerald**



**Yasmine**  
**38LF2040**

-----  
Embroidered Twill  
(55% viscose/45% rayon)  
7/8 sleeve with smocked cuff  
Elastic at waist with full skirt  
High hip length

**Black**  
**Emerald**



**Aya**  
**38LF5020**

-----  
Stretch Ponte  
(63% viscose/ 32% nylon/  
5% spandex)  
Functional zip at front  
Buttons at front body  
Slim through thigh to flare  
Full length (31" Inseam)

**Black**  
**Brown**

**Aya**  
**38LF5020**

Stretch Ponte  
(63% viscose/ 32% nylon/  
5% spandex)  
Functional zip at front  
Buttons at front body  
Slim through thigh to flare  
Full length (31" Inseam)

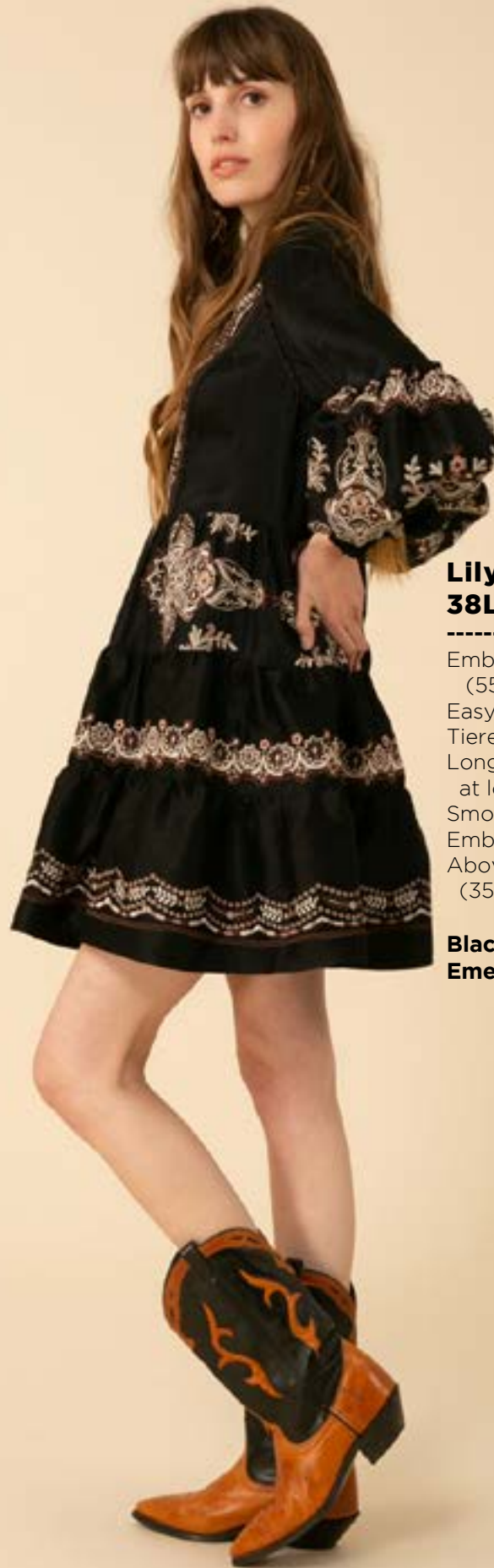
**Black**  
**Brown**



**Lily**  
**38LF6020**

Embroidered Twill  
(55% viscose/45% rayon)  
Easy fit, slim through rib cage  
Tiered, swingy fit at skirt  
Long sleeve with tier  
at lower part  
Smocked cuff at wrist  
Embroidered dot trim details  
Above the knee length  
(35.5" HPS)

**Black**  
**Emerald**



**Lily**  
**38LF6020**

Embroidered Twill  
(55% viscose/45% rayon)  
Easy fit, slim through rib cage  
Tiered, swingy fit at skirt  
Long sleeve with tier  
at lower part  
Smocked cuff at wrist  
Embroidered dot trim details  
Above the knee length  
(35.5" HPS)

**Black**  
**Emerald**





**Lily**  
**38LF602M**

-----  
Embroidered Twill  
(55% viscose/45% rayon)  
Easy fit, slim through rib cage  
Tiered, swingy fit at skirt  
Long sleeve with tier  
at lower part  
Smocked cuff at wrist  
Embroidered dot trim details  
Maxi length (58" HPS)

**Black**  
**Emerald**

**Lily**  
**38LF602M**

-----  
Embroidered Twill  
(55% viscose/45% rayon)  
Easy fit, slim through rib cage  
Tiered, swingy fit at skirt  
Long sleeve with tier  
at lower part  
Smocked cuff at wrist  
Embroidered dot trim details  
Maxi length (58" HPS)

**Black**  
**Emerald**





**Apolline**  
**38LF6040**

-----  
Embroidered Twill  
(55% viscose/45% rayon)  
Flounce ruffle at neck  
7/8 length slim sleeve with flounce  
Flower enamel buttons front body  
Buttons function only at top and  
bottom of opening  
Pockets at hips  
Embroidered dot trim details  
Invisible zip at back  
Maxi length (58" HPS)

**Black**  
**Emerald**



**Apolline**  
**38LF6040**

-----  
Embroidered Twill  
(55% viscose/45% rayon)  
Flounce ruffle at neck  
7/8 length slim sleeve with flounce  
Flower enamel buttons front body  
Buttons function only at top and  
bottom of opening  
Pockets at hips  
Embroidered dot trim details  
Invisible zip at back  
Maxi length (58" HPS)

**Black**  
**Emerald**



**Clara**  
**38LF7020**

-----  
Faux fur jacquard  
(100% Polyester)  
Fully Lined  
Double breasted coat  
Pockets at hips  
Long sleeve  
Midi length (47" HPS)

**Black**  
**Camel**



**Clara**  
**38LF7020**

-----  
Faux fur jacquard  
(100% Polyester)  
Fully Lined  
Double breasted coat  
Pockets at hips  
Long sleeve  
Midi length (47" HPS)

**Black**  
**Camel**







**Ella**  
**38LF7030**

-----  
Faux fur jacquard  
(100% Polyester)  
Fully Lined  
Double breasted coat  
Pockets at hips  
Long sleeve  
Low hip length (30" HPS)

**Black**  
**Camel**



**Ella**  
**38LF7030**

-----  
Faux fur jacquard  
(100% Polyester)  
Fully Lined  
Double breasted coat  
Pockets at hips  
Long sleeve  
Low hip length (30" HPS)

**Black**  
**Camel**

# Eye Candy





**Lana  
38NY2020**  
-----

Crepe de chine  
(100% rayon)  
Sheer crochet insert  
at sleeve  
Voluminous sleeve  
with pleating at the  
shoulder, smocked wrist  
Hip length  
with curved hem

**Black & White  
Peach**



**Lana  
38NY2020**  
-----

Crepe de chine  
(100% rayon)  
Sheer crochet insert  
at sleeve  
Voluminous sleeve  
with pleating at the  
shoulder, smocked wrist  
Hip length  
with curved hem

**Black & White  
Peach**



**Assia**  
**38NY2040**

Matte jersey  
(96% polyester/4% span)  
Elastic at waist  
7/8 bell sleeve with ruffle  
Swingy lower body

**Black & White**  
**Peach**



**Assia**  
**38NY2040**

Matte jersey  
(96% polyester/4% span)  
Elastic at waist  
7/8 bell sleeve with ruffle  
Swingy lower body

**Black & White**  
**Peach**



**Zélie**  
**38NY3020**

Wool Blend  
Jacquard Sweater  
(58% Acrylic/  
30% Polyester/  
10% wool/ 2% spandex)  
Shawl collar, fringe at edges  
Wrap body with belt  
Low hip length  
(28" HPS)

**Blue**  
**Grey**  
**Ivory**



**Zélie**  
**38NY3020**

Wool Blend  
Jacquard Sweater  
(58% Acrylic/  
30% Polyester/  
10% wool/ 2% spandex)  
Shawl collar, fringe at edges  
Wrap body with belt  
Low hip length  
(28" HPS)

**Blue**  
**Grey**  
**Ivory**



**Zélie**  
**38NY3020**

Wool Blend  
Jacquard Sweater  
(58% Acrylic/  
30% Polyester/  
10% wool/ 2% spandex)  
Shawl collar, fringe at edges  
Wrap body with belt  
Low hip length  
(28" HPS)

**Blue**  
**Grey**  
**Ivory**



**Marie**  
**38NY3040**

Wool Blend  
Jacquard Sweater  
(58% Acrylic/  
30% Polyester/  
10% wool/ 2% spandex)  
Shawl collar, fringe at edges  
Wrap body with belt  
Midi length (46" HPS)

**Blue**  
**Grey**  
**Ivory**



**Marie**  
**38NY3040**

Wool Blend  
Jacquard Sweater  
(58% Acrylic/  
30% Polyester/  
10% wool/ 2% spandex)  
Shawl collar, fringe at edges  
Wrap body with belt  
Midi length (46" HPS)

**Blue**  
**Grey**  
**Ivory**

**Marie**  
**38NY3040**

Wool Blend  
Jacquard Sweater  
(58% Acrylic/  
30% Polyester/  
10% wool/ 2% spandex)  
Shawl collar, fringe at edges  
Wrap body with belt  
Midi length (46" HPS)

**Blue**  
**Grey**  
**Ivory**



**Lila**  
**38NY6020**

Matte jersey  
(96% polyester/  
4% spandex)  
Long sleeve  
with smocked cuff  
Slim fit through rib cage  
Tiered swingy fit at skirt  
Above the knee length  
(35.5" HPS)

**Black & White**  
**Peach**





**Lila**  
**38NY6020**

-----  
Matte jersey  
(96% polyester/  
4% spandex)  
Long sleeve  
with smocked cuff  
Slim fit through rib cage  
Tiered swingy fit at skirt  
Above the knee length  
(35.5" HPS)

**Black & White  
Peach**



**Albane**  
**38NY6040**

-----  
Lurex jacquard chiffon  
(100% polyester)  
Jersey lining  
(95% viscose/5% spandex)  
Trim at shoulder & sleeve  
Smocking at waist  
Voluminous sleeve  
Tier at lower skirt  
Maxi length (58" HPS)

**Black & White  
Peach**



**Albane**  
**38NY6040**

-----  
Lurex jacquard chiffon  
(100% polyester)  
Jersey lining  
(95% viscose/5% spandex)  
Trim at shoulder & sleeve  
Smocking at waist  
Voluminous sleeve  
Tier at lower skirt  
Maxi length (58" HPS)

**Black & White  
Peach**

# Gilded Touch







**Maëlys**  
**38TJ2020**

-----  
Foiled chiffon  
(100% polyester)  
Pintucking at  
front & back body  
Laceup at front  
Long sleeve  
with ruffles & elastic  
at cuff  
Low hip length  
with curved hem

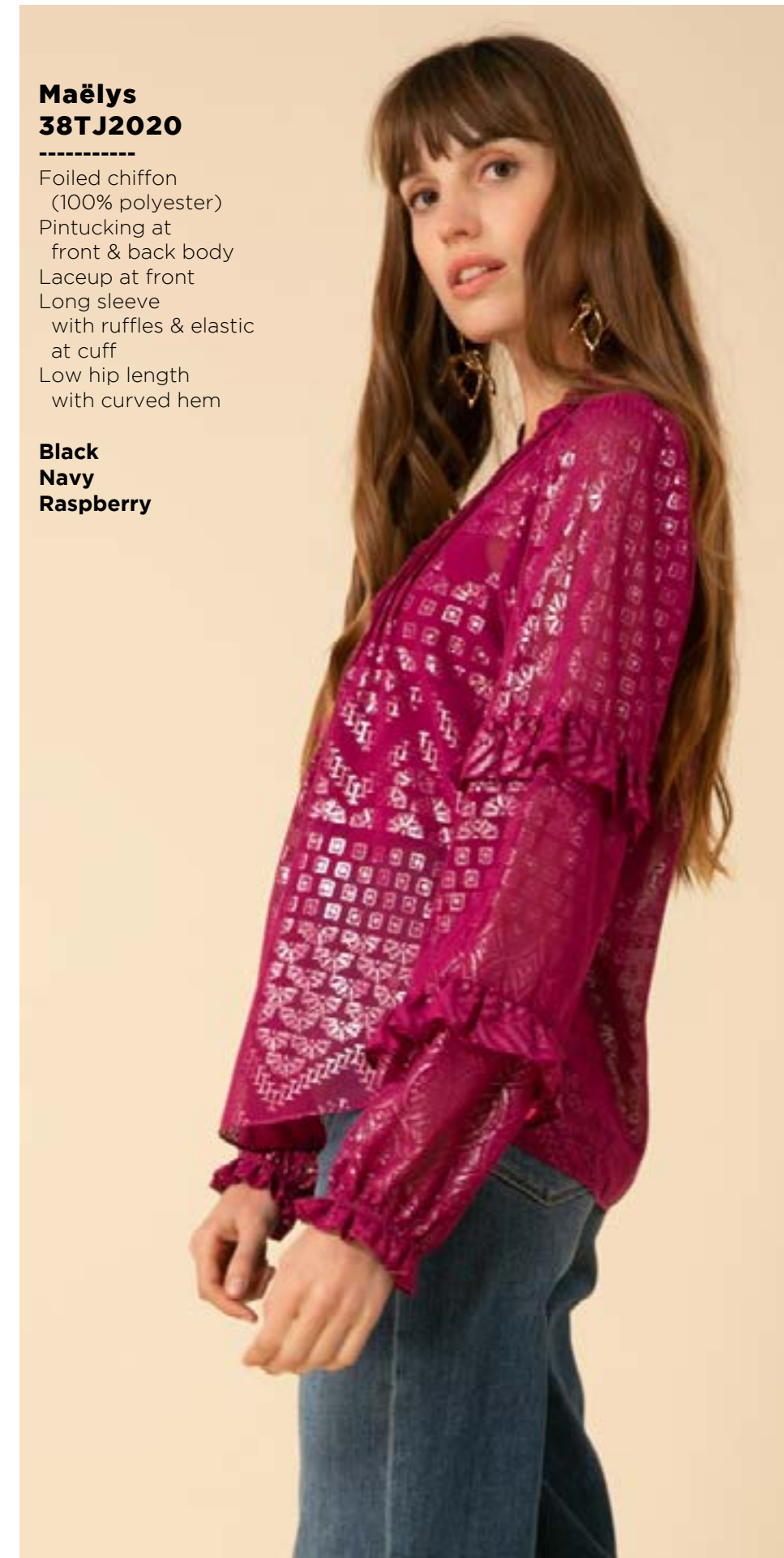
**Black**  
**Navy**  
**Raspberry**



**Maëlys**  
**38TJ2020**

-----  
Foiled chiffon  
(100% polyester)  
Pintucking at  
front & back body  
Laceup at front  
Long sleeve  
with ruffles & elastic  
at cuff  
Low hip length  
with curved hem

**Black**  
**Navy**  
**Raspberry**



**Maëlys**  
**38TJ2020**

-----  
Foiled chiffon  
(100% polyester)  
Pintucking at  
front & back body  
Laceup at front  
Long sleeve  
with ruffles & elastic  
at cuff  
Low hip length  
with curved hem

**Black**  
**Navy**  
**Raspberry**



**Lania**  
**36TE2040**

-----  
Foiled chiffon  
(100% polyester)  
Elastic at neck  
with tie at front  
Flutter sleeves  
Easy fit body  
with curved hem

**Black**  
**Navy**  
**Raspberry**



**Lania**  
**36TE2040**

-----  
Foiled chiffon  
(100% polyester)  
Elastic at neck  
with tie at front  
Flutter sleeves  
Easy fit body  
with curved hem

**Black**  
**Navy**  
**Raspberry**



**Lania**  
**36TE2040**

-----  
Foiled chiffon  
(100% polyester)  
Elastic at neck  
with tie at front  
Flutter sleeves  
Easy fit body  
with curved hem

**Black**  
**Navy**  
**Raspberry**



**Maria**  
**38TJ3020**

Wool Blend Jacquard Sweater  
(58% Acrylic/ 30% Polyester/  
10% wool/ 2%spandex)  
Shawl collar, fringe at edges  
Oversized poncho style  
Buttons at front body  
Mid-thigh length (32" HPS)

**Black**  
**Navy**  
**Red**



**Maria**  
**38TJ3020**

Wool Blend Jacquard Sweater  
(58% Acrylic/ 30% Polyester/  
10% wool/ 2%spandex)  
Shawl collar, fringe at edges  
Oversized poncho style  
Buttons at front body  
Mid-thigh length (32" HPS)

**Black**  
**Navy**  
**Red**



**Maria**  
**38TJ3020**

Wool Blend Jacquard Sweater  
(58% Acrylic/ 30% Polyester/  
10% wool/ 2%spandex)  
Shawl collar, fringe at edges  
Oversized poncho style  
Buttons at front body  
Mid-thigh length (32" HPS)

**Black**  
**Navy**  
**Red**



**Emmy**  
**38TJ3030**

Wool Blend Jacquard Sweater  
(58% Acrylic/ 30% Polyester/  
10% wool/ 2% spandex)  
Shawl collar, fringe at edges  
Wrap body with belt  
Low hip length (28" HPS)

**Black**  
**Navy**  
**Red**



**Emmy**  
**38TJ3030**

Wool Blend Jacquard Sweater  
(58% Acrylic/ 30% Polyester/  
10% wool/ 2% spandex)  
Shawl collar, fringe at edges  
Wrap body with belt  
Low hip length (28" HPS)

**Black**  
**Navy**  
**Red**



**Emmy**  
**38TJ3030**

Wool Blend Jacquard Sweater  
(58% Acrylic/ 30% Polyester/  
10% wool/ 2% spandex)  
Shawl collar, fringe at edges  
Wrap body with belt  
Low hip length (28" HPS)

**Black**  
**Navy**  
**Red**



**Leana  
38TJ3040**

Wool Blend Jacquard Sweater  
(58% Acrylic/ 30% Polyester/  
10% wool/ 2% spandex)  
Shawl collar, fringe at edges  
Wrap body with belt  
Midi length (46" HPS)

**Black  
Navy  
Red**



**Leana  
38TJ3040**

Wool Blend Jacquard Sweater  
(58% Acrylic/ 30% Polyester/  
10% wool/ 2% spandex)  
Shawl collar, fringe at edges  
Wrap body with belt  
Midi length (46" HPS)

**Black  
Navy  
Red**



**Leana  
38TJ3040**

Wool Blend Jacquard Sweater  
(58% Acrylic/ 30% Polyester/  
10% wool/ 2% spandex)  
Shawl collar, fringe at edges  
Wrap body with belt  
Midi length (46" HPS)

**Black  
Navy  
Red**



**Joy**  
**38TJ6020**

-----  
Foiled chiffon  
(100% polyester)  
Wrap front  
with hook & eye  
Elastic smocked waist  
Flutter sleeve with ruffle  
Tiered skirt with slit  
at lower tiers  
Midi length at front  
with hi/low hem

**Black**  
**Navy**  
**Raspberry**



**Joy**  
**38TJ6020**

-----  
Foiled chiffon  
(100% polyester)  
Wrap front  
with hook & eye  
Elastic smocked waist  
Flutter sleeve with ruffle  
Tiered skirt with slit  
at lower tiers  
Midi length at front  
with hi/low hem

**Black**  
**Navy**  
**Raspberry**



**Joy**  
**38TJ6020**

-----  
Foiled chiffon  
(100% polyester)  
Wrap front  
with hook & eye  
Elastic smocked waist  
Flutter sleeve with ruffle  
Tiered skirt with slit  
at lower tiers  
Midi length at front  
with hi/low hem

**Black**  
**Navy**  
**Raspberry**

**Joy**  
**38TJ602S**

Charmeuse  
(100% polyester)  
Wrap front  
with hook & eye  
Elastic smocked waist  
Flutter sleeve with ruffle  
Tiered skirt with slit  
at lower tiers  
Midi length at front  
with hi/low hem

**Black**  
**Green**  
**Rose**



**Joy**  
**38TJ602S**

Charmeuse  
(100% polyester)  
Wrap front  
with hook & eye  
Elastic smocked waist  
Flutter sleeve with ruffle  
Tiered skirt with slit  
at lower tiers  
Midi length at front  
with hi/low hem

**Black**  
**Green**  
**Rose**



**Joy**  
**38TJ602S**

Charmeuse  
(100% polyester)  
Wrap front  
with hook & eye  
Elastic smocked waist  
Flutter sleeve with ruffle  
Tiered skirt with slit  
at lower tiers  
Midi length at front  
with hi/low hem

**Black**  
**Green**  
**Rose**





**Mathilde**  
**38TJ6040**

-----  
Foiled chiffon  
(100% polyester)  
Ruffle detailing  
throughout body  
Long sleeve  
with smocked cuff  
Smocked band under bust  
Tiered voluminous skirt  
Slit at side front leg  
Maxi length (59" HPS)

**Black**  
**Navy**  
**Raspberry**



**Mathilde**  
**38TJ6040**

-----  
Foiled chiffon  
(100% polyester)  
Ruffle detailing  
throughout body  
Long sleeve  
with smocked cuff  
Smocked band under bust  
Tiered voluminous skirt  
Slit at side front leg  
Maxi length (59" HPS)

**Black**  
**Navy**  
**Raspberry**



**Mathilde**  
**38TJ6040**

-----  
Foiled chiffon  
(100% polyester)  
Ruffle detailing  
throughout body  
Long sleeve  
with smocked cuff  
Smocked band under bust  
Tiered voluminous skirt  
Slit at side front leg  
Maxi length (59" HPS)

**Black**  
**Navy**  
**Raspberry**





**Mathilde  
38TJ604S**

Charmeuse  
(100% polyester)  
Ruffle detailing  
throughout body  
Long sleeve  
with smocked cuff  
Smocked band under bust  
Tiered voluminous skirt  
Slit at side front leg  
Maxi length (59" HPS)

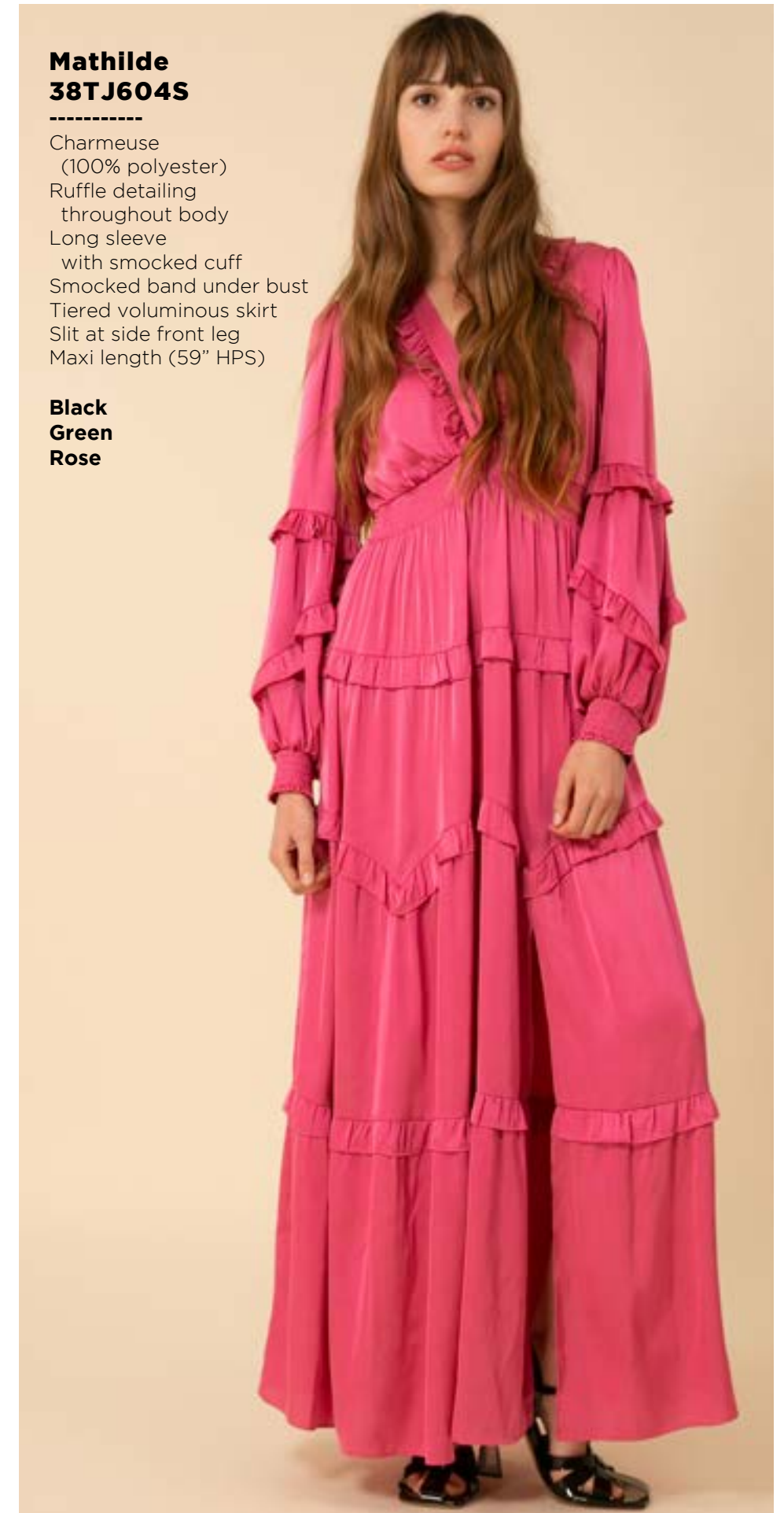
**Black  
Green  
Rose**



**Mathilde  
38TJ604S**

Charmeuse  
(100% polyester)  
Ruffle detailing  
throughout body  
Long sleeve  
with smocked cuff  
Smocked band under bust  
Tiered voluminous skirt  
Slit at side front leg  
Maxi length (59" HPS)

**Black  
Green  
Rose**



**Mathilde  
38TJ604S**

Charmeuse  
(100% polyester)  
Ruffle detailing  
throughout body  
Long sleeve  
with smocked cuff  
Smocked band under bust  
Tiered voluminous skirt  
Slit at side front leg  
Maxi length (59" HPS)

**Black  
Green  
Rose**



# Going Places



**Alicia  
38WP2020**

Velvet burnout  
(60% silk/40% viscose)  
Set in lining at body  
(100% viscose)  
Smocking at neck  
Buttons at front keyhole  
Charmeuse piping details  
Long sleeve with cuff  
Low hip length  
with curved hem

**Blue  
Pink**



**Alicia  
38WP2020**

Velvet burnout  
(60% silk/40% viscose)  
Set in lining at body  
(100% viscose)  
Smocking at neck  
Buttons at front keyhole  
Charmeuse piping details  
Long sleeve with cuff  
Low hip length  
with curved hem

**Blue  
Pink**



**Alicia  
38WP202S**

Velvet burnout  
(60% silk/40% viscose)  
Set in lining at body  
(100% viscose)  
Smocking at neck  
Buttons at front keyhole  
Charmeuse piping details  
Long sleeve with cuff  
Low hip length  
with curved hem

**Black  
Magenta  
Navy**

**Alicia**  
**38WP202S**

Velvet burnout  
(60% silk/40% viscose)  
Set in lining at body  
(100% viscose)  
Smocking at neck  
Buttons at front keyhole  
Charmeuse piping details  
Long sleeve with cuff  
Low hip length  
with curved hem

**Black**  
**Magenta**  
**Navy**



**Alicia**  
**38WP202S**

Velvet burnout  
(60% silk/40% viscose)  
Set in lining at body  
(100% viscose)  
Smocking at neck  
Buttons at front keyhole  
Charmeuse piping details  
Long sleeve with cuff  
Low hip length  
with curved hem

**Black**  
**Magenta**  
**Navy**



**Thaïs**  
**38WP2040**

Velvet burnout  
(60% silk/40% viscose)  
Set in lining at body  
(100% viscose)  
Ruffles at armholes  
Scarf ties at front neck  
Charmeuse piping details  
Hip length  
with curved hem

**Blue**  
**Pink**



**Thaïs**  
**38WP2040**

Velvet burnout  
(60% silk/40% viscose)  
Set in lining at body  
(100% viscose)  
Ruffles at armholes  
Scarf ties at front neck  
Charmeuse piping details  
Hip length  
with curved hem

**Blue**  
**Pink**



**Thaïs**  
**38WP204S**

Velvet burnout  
(60% silk/40% viscose)  
Set in lining at body  
(100% viscose)  
Ruffles at armholes  
Scarf ties at front neck  
Charmeuse piping details  
Hip length  
with curved hem

**Black**  
**Magenta**  
**Navy**



**Thaïs**  
**38WP204S**

Velvet burnout  
(60% silk/40% viscose)  
Set in lining at body  
(100% viscose)  
Ruffles at armholes  
Scarf ties at front neck  
Charmeuse piping details  
Hip length  
with curved hem

**Black**  
**Magenta**  
**Navy**





**Thaïs**  
**38WP204S**

Velvet burnout  
(60% silk/40% viscose)  
Set in lining at body  
(100% viscose)  
Ruffles at armholes  
Scarf ties at front neck  
Charmeuse piping details  
Hip length  
with curved hem

**Black**  
**Magenta**  
**Navy**



**Constance**  
**38WP2060**

Quilted velvet burnout  
(60% silk/40% viscose)  
Set in lining at body  
(100% viscose)  
Snaps at front body  
Pockets at front  
Long sleeve  
High hip length

**Blue**  
**Pink**

**Constance**  
**38WP2060**

Quilted velvet burnout  
(60% silk/40% viscose)  
Set in lining at body  
(100% viscose)  
Snaps at front body  
Pockets at front  
Long sleeve  
High hip length

**Blue**  
**Pink**



**Constance**  
**38WP206S**

Quilted velvet burnout  
(60% silk/40% viscose)  
Set in lining at body  
(100% viscose)  
Snaps at front body  
Pockets at front  
Long sleeve  
High hip length

**Black**  
**Magenta**  
**Navy**



**Constance**  
**38WP206S**

Quilted velvet burnout  
(60% silk/40% viscose)  
Set in lining at body  
(100% viscose)  
Snaps at front body  
Pockets at front  
Long sleeve  
High hip length

**Black**  
**Magenta**  
**Navy**



**Constance**  
**38WP206S**

Quilted velvet burnout  
(60% silk/40% viscose)  
Set in lining at body  
(100% viscose)  
Snaps at front body  
Pockets at front  
Long sleeve  
High hip length

**Black**  
**Magenta**  
**Navy**







**Salomé  
38WP6020**

Velvet burnout  
(60% silk/40% viscose)  
Set in lining at body  
(100% viscose)  
Slim fit body with tier at hem  
7/8 length flared bell sleeve  
with ruffle at edge  
Charmeuse piping details  
Above the knee length  
(35.5" HPS)

**Blue  
Pink**



**Salomé  
38WP6020**

Velvet burnout  
(60% silk/40% viscose)  
Set in lining at body  
(100% viscose)  
Slim fit body with tier at hem  
7/8 length flared bell sleeve  
with ruffle at edge  
Charmeuse piping details  
Above the knee length  
(35.5" HPS)

**Blue  
Pink**



**Salomé  
38WP602S**

Velvet burnout  
(60% silk/40% viscose)  
Set in lining at body  
(100% viscose)  
Slim fit body with tier at hem  
7/8 length flared bell sleeve  
with ruffle at edge  
Charmeuse piping details  
Above the knee length  
(35.5" HPS)

**Black  
Magenta  
Navy**



**Salomé**  
**38WP602S**

Velvet burnout  
(60% silk/40% viscose)  
Set in lining at body  
(100% viscose)  
Slim fit body with tier at hem  
7/8 length flared bell sleeve  
with ruffle at edge  
Charmeuse piping details  
Above the knee length  
(35.5" HPS)

**Black**  
**Magenta**  
**Navy**



**Salomé**  
**38WP602S**

Velvet burnout  
(60% silk/40% viscose)  
Set in lining at body  
(100% viscose)  
Slim fit body with tier at hem  
7/8 length flared bell sleeve  
with ruffle at edge  
Charmeuse piping details  
Above the knee length  
(35.5" HPS)

**Black**  
**Magenta**  
**Navy**



**Valentine**  
**38WP6040**

Velvet burnout  
(60% silk/40% viscose)  
Set in lining at body  
(100% viscose)  
Wrap front with  
charmeuse piping  
Short sleeve  
Tiered voluminous skirt  
with slit at lower tiers  
Ankle length with hi/low  
(49" HPS at front,  
52" at back)

**Blue**  
**Pink**

**Valentine  
38WP6040**

Velvet burnout  
(60% silk/40% viscose)  
Set in lining at body  
(100% viscose)  
Wrap front with charmeuse  
piping  
Short sleeve  
Tiered voluminous skirt  
with slit at lower tiers  
Ankle length with hi/low  
(49" HPS at front,  
52" at back)

**Blue  
Pink**



**Valentine  
38WP604S**

Velvet burnout  
(60% silk/40% viscose)  
Set in lining at body  
(100% viscose)  
Wrap front with  
charmeuse piping  
Short sleeve  
Tiered voluminous skirt  
with slit at lower tiers  
Ankle length with hi/low  
(49" HPS at front,  
52" at back)

**Black  
Magenta  
Navy**



**Valentine  
38WP604S**

Velvet burnout  
(60% silk/40% viscose)  
Set in lining at body  
(100% viscose)  
Wrap front with  
charmeuse piping  
Short sleeve  
Tiered voluminous skirt  
with slit at lower tiers  
Ankle length with hi/low  
(49" HPS at front,  
52" at back)

**Black  
Magenta  
Navy**



**Valentine**  
**38WP604S**

Velvet burnout  
(60% silk/40% viscose)  
Set in lining at body  
(100% viscose)  
Wrap front with  
charmeuse piping  
Short sleeve  
Tiered voluminous skirt  
with slit at lower tiers  
Ankle length with hi/low  
(49" HPS at front,  
52" at back)

**Black**  
**Magenta**  
**Navy**



**Héloïse**  
**38WP6060**

Velvet burnout  
(60% silk/40% viscose)  
Set in lining at body  
(100% viscose)  
Slim fit through body  
Flounce tier at skirt  
Buttons at front body  
Charmeuse piping details  
Puff sleeve  
with smocket cuff  
Tie belt at waist  
Maxi length (58" HPS)

**Blue**  
**Pink**



**Héloïse**  
**38WP6060**

Velvet burnout  
(60% silk/40% viscose)  
Set in lining at body  
(100% viscose)  
Slim fit through body  
Flounce tier at skirt  
Buttons at front body  
Charmeuse piping details  
Puff sleeve  
with smocket cuff  
Tie belt at waist  
Maxi length (58" HPS)

**Blue**  
**Pink**



**Héloïse**  
**38WP606S**

Velvet burnout  
(60% silk/40% viscose)  
Set in lining at body  
(100% viscose)  
Slim fit through body  
Flounce tier at skirt  
Buttons at front body  
Charmeuse piping details  
Puff sleeve  
with smocket cuff  
Tie belt at waist  
Maxi length (58" HPS)

**Black**  
**Magenta**  
**Navy**



**Héloïse**  
**38WP606S**

Velvet burnout  
(60% silk/40% viscose)  
Set in lining at body  
(100% viscose)  
Slim fit through body  
Flounce tier at skirt  
Buttons at front body  
Charmeuse piping details  
Puff sleeve  
with smocket cuff  
Tie belt at waist  
Maxi length (58" HPS)

**Black**  
**Magenta**  
**Navy**



**Héloïse**  
**38WP606S**

Velvet burnout  
(60% silk/40% viscose)  
Set in lining at body  
(100% viscose)  
Slim fit through body  
Flounce tier at skirt  
Buttons at front body  
Charmeuse piping details  
Puff sleeve  
with smocket cuff  
Tie belt at waist  
Maxi length (58" HPS)

**Black**  
**Magenta**  
**Navy**



# HALE BOB

LOS ANGELES

Season 9



# Desert Stars





**Garance  
39ED2020**

Velvet burnout  
(60% silk/40% viscose)  
Set in lining at body  
(100% viscose)  
Shirring at yoke &  
center front  
Long sleeve  
with smocked cuff

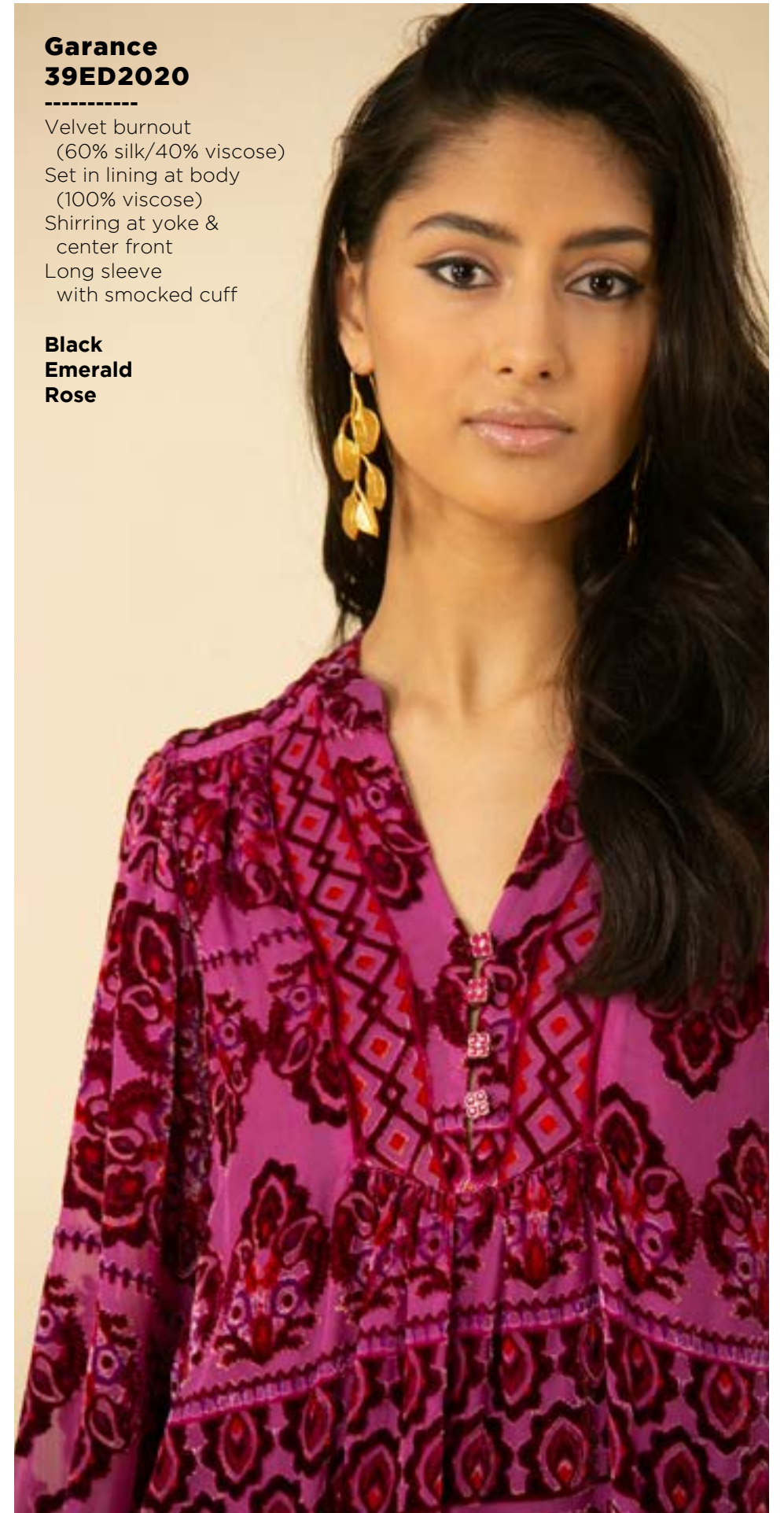
**Black  
Emerald  
Rose**



**Garance  
39ED2020**

Velvet burnout  
(60% silk/40% viscose)  
Set in lining at body  
(100% viscose)  
Shirring at yoke &  
center front  
Long sleeve  
with smocked cuff

**Black  
Emerald  
Rose**



**Garance  
39ED2020**

Velvet burnout  
(60% silk/40% viscose)  
Set in lining at body  
(100% viscose)  
Shirring at yoke &  
center front  
Long sleeve  
with smocked cuff

**Black  
Emerald  
Rose**



**Nelya**  
**39ED2040**

Matte jersey  
(96% polyester/  
4% spandex)  
Pleat at front under placket  
Full length sleeve with  
smocked cuff  
Hip length

**Black**  
**Emerald**



**Nelya**  
**39ED2040**

Matte jersey  
(96% polyester/  
4% spandex)  
Pleat at front under placket  
Full length sleeve with  
smocked cuff  
Hip length

**Black**  
**Emerald**



**Harper**  
**39ED6020**

Matte jersey  
(96% polyester/  
4% spandex)  
Slim fit through rib cage  
Tiered swingy fit at skirt  
Long sleeve  
with smocked cuff  
Above the knee length  
(35.5" HPS)

**Black**  
**Emerald**



**Harper  
39ED6020**

Matte jersey  
(96% polyester/  
4% spandex)  
Slim fit through rib cage  
Tiered swingy fit at skirt  
Long sleeve  
with smocked cuff  
Above the knee length  
(35.5" HPS)

**Black  
Emerald**



**Camila  
39ED6030**

Velvet burnout  
(60% silk/40% viscose)  
Set in lining at body  
(100% viscose)  
Smocked waistband  
Skirt with tier at hem  
Pockets at hips  
Long sleeve  
with smocked cuff  
Above the knee length  
(35.5" HPS)

**Black  
Emerald  
Rose**



**Camila  
39ED6030**

Velvet burnout  
(60% silk/40% viscose)  
Set in lining at body  
(100% viscose)  
Smocked waistband  
Skirt with tier at hem  
Pockets at hips  
Long sleeve  
with smocked cuff  
Above the knee length  
(35.5" HPS)

**Black  
Emerald  
Rose**



**Camila**  
**39ED6030**

-----  
Velvet burnout  
(60% silk/40% viscose)  
Set in lining at body  
(100% viscose)  
Smocked waistband  
Skirt with tier at hem  
Pockets at hips  
Long sleeve  
with smocked cuff  
Above the knee length  
(35.5" HPS)

**Black**  
**Emerald**  
**Rose**



**Gianna**  
**39ED6040**

-----  
Velvet burnout  
(60% silk/40% viscose)  
Set in lining at body  
(100% viscose)  
Slim fit through body  
Voluminous tier at skirt  
Buttons at front body  
Puff sleeve  
with elastic smocking  
Tie belt at waist  
Maxi length (58" HPS)

**Black**  
**Emerald**



**Gianna**  
**39ED6040**

-----  
Velvet burnout  
(60% silk/40% viscose)  
Set in lining at body  
(100% viscose)  
Slim fit through body  
Voluminous tier at skirt  
Buttons at front body  
Puff sleeve  
with elastic smocking  
Tie belt at waist  
Maxi length (58" HPS)

**Black**  
**Emerald**





**Elizabeth**  
**39ED6050**

-----  
Lightweight stretch velvet  
(90% polyester/10% span)  
Slim fit through rib cage  
Tiered swingy fit at skirt  
Long sleeve  
with smocked cuff  
Above the knee length  
(35.5" HPS)

**Black**  
**Emerald**  
**Navy**  
**Wine**



**Elizabeth**  
**39ED6050**

-----  
Lightweight stretch velvet  
(90% polyester/10% span)  
Slim fit through rib cage  
Tiered swingy fit at skirt  
Long sleeve  
with smocked cuff  
Above the knee length  
(35.5" HPS)

**Black**  
**Emerald**  
**Navy**  
**Wine**





**Elizabeth  
39ED6050**

Lightweight stretch velvet  
(90% polyester/10% span)  
Slim fit through rib cage  
Tiered swingy fit at skirt  
Long sleeve  
with smocked cuff  
Above the knee length  
(35.5" HPS)

**Black  
Emerald  
Navy  
Wine**



**Elizabeth  
39ED6050**

Lightweight stretch velvet  
(90% polyester/10% span)  
Slim fit through rib cage  
Tiered swingy fit at skirt  
Long sleeve  
with smocked cuff  
Above the knee length  
(35.5" HPS)

**Black  
Emerald  
Navy  
Wine**



**Eleanor  
39ED6060**

Lightweight stretch velvet  
(90% polyester/10% span)  
Hook & eye at front neck  
Elastic smocked waist  
Long sleeve  
with smocked cuff  
Tiered skirt  
with slit at lower tiers  
Ankle length at front  
with hi/low hem  
(49" at front, 52" at back)

**Black  
Emerald  
Navy  
Wine**



**Eleanor  
39ED6060**

Lightweight stretch velvet  
(90% polyester/10% span)  
Hook & eye at front neck  
Elastic smocked waist  
Long sleeve  
with smocked cuff  
Tiered skirt  
with slit at lower tiers  
Ankle length at front  
with hi/low hem  
(49" at front, 52" at back)

**Black  
Emerald  
Navy  
Wine**



**Eleanor  
39ED6060**

Lightweight stretch velvet  
(90% polyester/10% span)  
Hook & eye at front neck  
Elastic smocked waist  
Long sleeve  
with smocked cuff  
Tiered skirt  
with slit at lower tiers  
Ankle length at front  
with hi/low hem  
(49" at front, 52" at back)

**Black  
Emerald  
Navy  
Wine**



**Eleanor  
39ED6060**

Lightweight stretch velvet  
(90% polyester/10% span)  
Hook & eye at front neck  
Elastic smocked waist  
Long sleeve  
with smocked cuff  
Tiered skirt  
with slit at lower tiers  
Ankle length at front  
with hi/low hem  
(49" at front, 52" at back)

**Black  
Emerald  
Navy  
Wine**





Life  
in  
Color



**Abigail**  
**39FC2020**

Washed crepe de chine  
(100% silk)  
Voluminous long sleeve  
with smocked cuff  
Relaxed swingy fit  
Hip length  
with curved hem

**Fuchsia**  
**Taupe**



**Abigail**  
**39FC2020**

Washed crepe de chine  
(100% silk)  
Voluminous long sleeve  
with smocked cuff  
Relaxed swingy fit  
Hip length  
with curved hem

**Fuchsia**  
**Taupe**



**Avery**  
**39FC4020**

Lightweight faux leather  
(100% Poly, fuzzy back  
face of fabric)  
Smocked waist  
Tiered skirt  
Pockets at hips  
18.5" from waist to hem

**Black**  
**Ivory**  
**Olive**

NOTE: The samples are small.  
A zipper will be added at the  
waist for easy entry





**Avery**  
**39FC4020**

Lightweight faux leather  
(100% Poly, fuzzy back  
face of fabric)  
Smocked waist  
Tiered skirt  
Pockets at hips  
18.5" from waist to hem

**Black**  
**Ivory**  
**Olive**

NOTE: The samples are small.  
A zipper will be added at the  
waist for easy entry



**Avery**  
**39FC4020**

Lightweight faux leather  
(100% Poly, fuzzy back  
face of fabric)  
Smocked waist  
Tiered skirt  
Pockets at hips  
18.5" from waist to hem

**Black**  
**Ivory**  
**Olive**

NOTE: The samples are small.  
A zipper will be added at the  
waist for easy entry



**Avery**  
**39FC402D**

Lightweight faux leather  
(100% Poly, fuzzy back  
face of fabric)  
Smocked waist  
Tiered skirt  
Pockets at hips  
30.5" from waist to hem

**Black**  
**Ivory**  
**Olive**

NOTE: The samples are small.  
A zipper will be added at the  
waist for easy entry

**Avery**  
**39FC402D**

Lightweight faux leather  
(100% Poly, fuzzy back  
face of fabric)  
Smocked waist  
Tiered skirt  
Pockets at hips  
30.5" from waist to hem

**Black**  
**Ivory**  
**Olive**

NOTE: The samples are small.  
A zipper will be added at the  
waist for easy entry



**Avery**  
**39FC402D**

Lightweight faux leather  
(100% Poly, fuzzy back  
face of fabric)  
Smocked waist  
Tiered skirt  
Pockets at hips  
30.5" from waist to hem

**Black**  
**Ivory**  
**Olive**

NOTE: The samples are small.  
A zipper will be added at the  
waist for easy entry



**Emily**  
**39FC6020**

Lightweight faux leather  
(100% Poly, fuzzy back  
face of fabric)  
Smocked waistband  
Skirt with tier at hem  
Pockets at hips  
Long sleeve  
with smocked cuff  
Above the knee length  
(35.5" HPS)

**Black**  
**Ivory**  
**Olive**





**Emily**  
**39FC6020**

Lightweight faux leather  
(100% Poly, fuzzy back  
face of fabric)  
Smocked waistband  
Skirt with tier at hem  
Pockets at hips  
Long sleeve  
with smocked cuff  
Above the knee length  
(35.5" HPS)

**Black**  
**Ivory**  
**Olive**



**Emily**  
**39FC6020**

Lightweight faux leather  
(100% Poly, fuzzy back  
face of fabric)  
Smocked waistband  
Skirt with tier at hem  
Pockets at hips  
Long sleeve  
with smocked cuff  
Above the knee length  
(35.5" HPS)

**Black**  
**Ivory**  
**Olive**



**Penelope**  
**39FC6030**

Matte jersey  
(96% polyester/  
4% spandex)  
Collar with mid length  
placket at front,  
with clover buttons  
Pockets at hips  
Long sleeve with wide cuff  
Self covered belt included  
Above the knee length  
(35.5" HPS)  
Deep hem included  
to adjust length

**Fuchsia**  
**Taupe**



**Penelope  
39FC6030**

-----  
Matte jersey  
(96% polyester/  
4% spandex)  
Collar with mid length  
placket at front,  
with clover buttons  
Pockets at hips  
Long sleeve with wide cuff  
Self covered belt included  
Above the knee length  
(35.5" HPS)  
Deep hem included  
to adjust length

**Fuchsia  
Taupe**

**Chloe  
39FC6040**

Chiffon  
(100% Polyester)  
Smocking & ruffle at neck  
Hook & eye hidden  
at front neck  
Elastic smocked waist  
Elbow length bell sleeve  
with ruffle  
Tiered skirt  
Midi length  
with hi/low hem  
(41" at front,  
44" at back)

**Fuchsia  
Taupe**



**Chloe  
39FC6040**

Chiffon  
(100% Polyester)  
Smocking & ruffle at neck  
Hook & eye hidden  
at front neck  
Elastic smocked waist  
Elbow length bell sleeve  
with ruffle  
Tiered skirt  
Midi length  
with hi/low hem  
(41" at front,  
44" at back)

**Fuchsia  
Taupe**

**Scarlett  
39FC6050**

Poly Chiffon  
with foiling Chiffon  
(100% Polyester)  
Ruffle detailing  
throughout body  
Elastic smocked waist  
Tiered voluminous skirt  
with side slit at leg  
Long sleeve  
with smocked cuff  
Maxi length (58" HPS)

**Fuchsia  
Taupe**





**Scarlett**  
**39FC6050**

-----  
Poly Chiffon  
with foiling Chiffon  
(100% Polyester)  
Ruffle detailing  
throughout body  
Elastic smocked waist  
Tiered voluminous skirt  
with side slit at leg  
Long sleeve  
with smocked cuff  
Maxi length (58" HPS)

**Fuchsia**  
**Taupe**





# High Voltage





**Nora  
39HG2020**  
-----

Lurex crinkle mesh  
(100% polyester)  
Set in lining  
(100% viscose)  
Buttons at front keyhole  
Smocked detail at neck  
with ruffle  
Long full sleeve  
with smocking & ruffle

**Black  
Champagne**



**Nora  
39HG2020**  
-----

Lurex crinkle mesh  
(100% polyester)  
Set in lining  
(100% viscose)  
Buttons at front keyhole  
Smocked detail at neck  
with ruffle  
Long full sleeve  
with smocking & ruffle

**Black  
Champagne**



**Ellie  
39HG6020**  
-----

Lurex crinkle mesh  
(100% polyester)  
Set in lining  
(100% viscose)  
Faux wrap at front body  
Shirred upper skirt with  
tiered lower ruffles  
Long sleeve with  
smocked cuff  
Mini length (34" HPS)

**Black**

# Leaves Fall



**Nova**  
**39LV2020**

Velvet burnout  
(60% silk/40% viscose)  
Set in lining at body  
(100% viscose)  
Smocking at neck  
Buttons at front keyhole  
Long sleeve with cuff  
Low hip length  
with curved hem

**Olive**  
**Raspberry**



**Nova**  
**39LV2020**

Velvet burnout  
(60% silk/40% viscose)  
Set in lining at body  
(100% viscose)  
Smocking at neck  
Buttons at front keyhole  
Long sleeve with cuff  
Low hip length  
with curved hem

**Olive**  
**Raspberry**



**Nova**  
**39LV202S**

Velvet burnout  
(60% silk/40% viscose)  
Set in lining at body  
(100% viscose)  
Smocking at neck  
Buttons at front keyhole  
Long sleeve with cuff  
Low hip length  
with curved hem

**Black**  
**Forest Green**  
**Rose**





**Nova  
39LV202S**  
-----

Velvet burnout  
(60% silk/40% viscose)  
Set in lining at body  
(100% viscose)  
Smocking at neck  
Buttons at front keyhole  
Long sleeve with cuff  
Low hip length  
with curved hem

**Black  
Forest Green  
Rose**



**Nova  
39LV202S**  
-----

Velvet burnout  
(60% silk/40% viscose)  
Set in lining at body  
(100% viscose)  
Smocking at neck  
Buttons at front keyhole  
Long sleeve with cuff  
Low hip length  
with curved hem

**Black  
Forest Green  
Rose**



**Violet  
39LV2040**  
-----

Velvet burnout  
(60% silk/40% viscose)  
Set in lining at body  
(100% viscose)  
Elastic & ruffle at neck  
can be worn on or  
off the shoulder  
Ties at front neck  
Long sleeve with ruffle  
Hip length

**Olive  
Raspberry**



**Violet  
39LV2040**

Velvet burnout  
(60% silk/40% viscose)  
Set in lining at body  
(100% viscose)  
Elastic & ruffle at neck  
can be worn on or  
off the shoulder  
Ties at front neck  
Long sleeve with ruffle  
Hip length

**Olive  
Raspberry**



**Violet  
39LV204S**

Velvet burnout  
(60% silk/40% viscose)  
Set in lining at body  
(100% viscose)  
Elastic & ruffle at neck  
can be worn on or  
off the shoulder  
Ties at front neck  
Long sleeve with ruffle  
Hip length

**Black  
Forest Green  
Rose**



**Violet  
39LV204S**

Velvet burnout  
(60% silk/40% viscose)  
Set in lining at body  
(100% viscose)  
Elastic & ruffle at neck  
can be worn on or  
off the shoulder  
Ties at front neck  
Long sleeve with ruffle  
Hip length

**Black  
Forest Green  
Rose**



**Violet**  
**39LV204S**

Velvet burnout  
(60% silk/40% viscose)  
Set in lining at body  
(100% viscose)  
Elastic & ruffle at neck  
can be worn on or  
off the shoulder  
Ties at front neck  
Long sleeve with ruffle  
Hip length

**Black**  
**Forest Green**  
**Rose**



**Riley**  
**39LV3020**

Wool Blend Jacquard Sweater  
(58% Acrylic/ 30% Polyester/  
10% wool/ 2% spandex)  
Shawl collar, fringe at edges  
Wrap body with belt  
Low hip length (28" HPS)

**Beige**  
**Blue**  
**Pink**



**Riley**  
**39LV3020**

Wool Blend Jacquard Sweater  
(58% Acrylic/ 30% Polyester/  
10% wool/ 2% spandex)  
Shawl collar, fringe at edges  
Wrap body with belt  
Low hip length (28" HPS)

**Beige**  
**Blue**  
**Pink**



**Riley**  
**39LV3020**

Wool Blend Jacquard Sweater  
(58% Acrylic/ 30% Polyester/  
10% wool/ 2% spandex)  
Shawl collar, fringe at edges  
Wrap body with belt  
Low hip length (28" HPS)

**Beige**  
**Blue**  
**Pink**



**Willow**  
**39LV6020**

Velvet burnout  
(60% silk/40% viscose)  
Set in lining at body  
(100% viscose)  
Smocked waistband  
Skirt with tier at hem  
Pockets at hips  
Balloon sleeve elbow length  
Above the knee length  
(35.5" HPS)

**Olive**  
**Raspberry**



**Willow**  
**39LV6020**

Velvet burnout  
(60% silk/40% viscose)  
Set in lining at body  
(100% viscose)  
Smocked waistband  
Skirt with tier at hem  
Pockets at hips  
Balloon sleeve elbow length  
Above the knee length  
(35.5" HPS)

**Olive**  
**Raspberry**



**Willow  
39LV602S**

Velvet burnout  
(60% silk/40% viscose)  
Set in lining at body  
(100% viscose)  
Smocked waistband  
Skirt with tier at hem  
Pockets at hips  
Balloon sleeve elbow length  
Above the knee length  
(35.5" HPS)

**Black  
Forest Green  
Rose**



**Willow  
39LV602S**

Velvet burnout  
(60% silk/40% viscose)  
Set in lining at body  
(100% viscose)  
Smocked waistband  
Skirt with tier at hem  
Pockets at hips  
Balloon sleeve elbow length  
Above the knee length  
(35.5" HPS)

**Black  
Forest Green  
Rose**



**Willow  
39LV602S**

Velvet burnout  
(60% silk/40% viscose)  
Set in lining at body  
(100% viscose)  
Smocked waistband  
Skirt with tier at hem  
Pockets at hips  
Balloon sleeve elbow length  
Above the knee length  
(35.5" HPS)

**Black  
Forest Green  
Rose**





**Stella**  
**39LV6040**

Velvet burnout  
(60% silk/40% viscose)  
Set in lining at body  
(100% viscose)  
Flounce ruffle at neck  
7/8 length sleeve  
with flounce  
Flower enamel buttons  
at front  
Buttons function only  
at top and bottom  
of opening  
Pockets at hips  
Invisible zip at back  
Maxi length (58" HPS)

**Olive**  
**Raspberry**



**Stella**  
**39LV6040**

Velvet burnout  
(60% silk/40% viscose)  
Set in lining at body  
(100% viscose)  
Flounce ruffle at neck  
7/8 length sleeve  
with flounce  
Flower enamel buttons  
at front  
Buttons function only  
at top and bottom  
of opening  
Pockets at hips  
Invisible zip  
at back  
Maxi length  
(58" HPS)

**Olive**  
**Raspberry**

# Treasure Trove



**Addison  
39SR2020**

-----  
Twill  
(55% viscose/45% rayon)  
Buttons at front keyhole  
Scarf tie at neck  
Long sleeve  
with smocked cuff  
Swingy fit, hip length

**Raspberry  
Teal**



**Addison  
39SR2020**

-----  
Twill  
(55% viscose/45% rayon)  
Buttons at front keyhole  
Scarf tie at neck  
Long sleeve  
with smocked cuff  
Swingy fit, hip length

**Raspberry  
Teal**

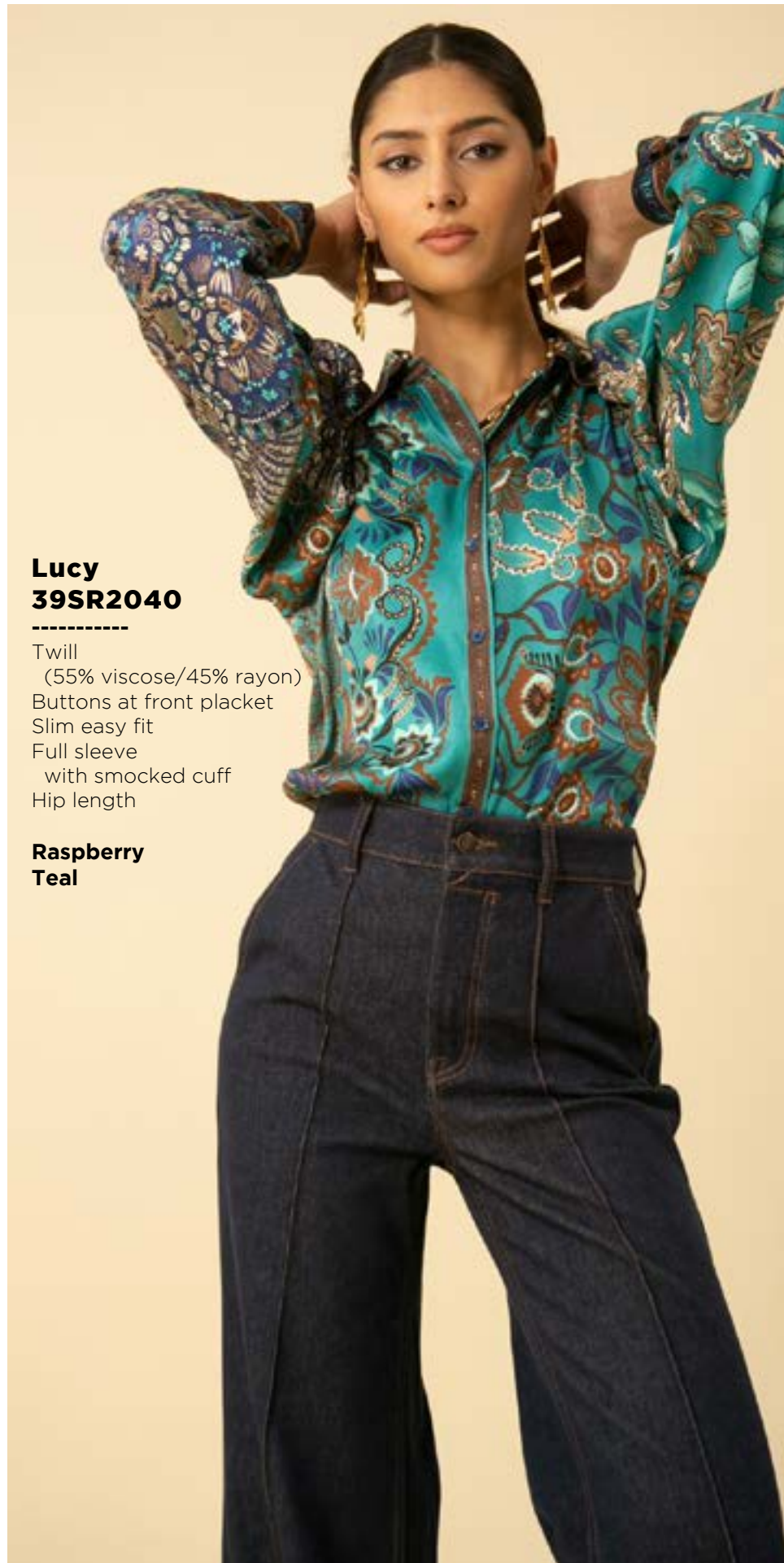


**Lucy  
39SR2040**

-----  
Twill  
(55% viscose/45% rayon)  
Buttons at front placket  
Slim easy fit  
Full sleeve  
with smocked cuff  
Hip length

**Raspberry  
Teal**





**Lucy  
39SR2040**

-----  
Twill  
(55% viscose/45% rayon)  
Buttons at front placket  
Slim easy fit  
Full sleeve  
with smocked cuff  
Hip length

**Raspberry  
Teal**



**Eliana  
39SR3020**

-----  
Wool Blend Jacquard Sweater  
(58% Acrylic/ 30% Polyester/  
10% wool/ 2% spandex)  
Shawl collar, fringe at edges  
Wrap body with belt  
Low hip length (28" HPS)

**Brown  
Beige/Teal**



**Everly  
39SR3040**

-----  
Wool Blend Jacquard Sweater  
(58% Acrylic/ 30% Polyester/  
10% wool/ 2% spandex)  
Shawl collar, fringe at edges  
Wrap body with belt  
Midi length (46" HPS)

**Navy  
Beige/Red**



**Everly**  
**39SR3040**

Wool Blend Jacquard Sweater  
(58% Acrylic/ 30% Polyester/  
10% wool/ 2% spandex)  
Shawl collar, fringe at edges  
Wrap body with belt  
Midi length (46" HPS)

**Navy**  
**Beige/Red**



**Ivy**  
**39SR5020**

Twill  
(55% viscose/45% rayon)  
Pockets at hips  
Flat front waist  
with elastic back  
Slim fit leg  
Tie at waist  
Ankle length (29" inseam)

**Raspberry**  
**Teal**



**Ivy**  
**39SR5020**

Twill  
(55% viscose/45% rayon)  
Pockets at hips  
Flat front waist  
with elastic back  
Slim fit leg  
Tie at waist  
Ankle length (29" inseam)

**Raspberry**  
**Teal**

**Paisley  
39SR6020**

Matte jersey  
(96% polyester/4% spandex)  
Mesh lining  
(95% nylon/8% spandex)  
Pleat at front under placket  
Full length sleeve with cuff  
Above the knee length  
(35.5" HPS)  
Deep hem added  
to adjust length

**39SR602B**  
(BEADED)

Hand beading  
on neckline

**Raspberry  
Teal**



**Paisley  
39SR6020**

Matte jersey  
(96% polyester/4% spandex)  
Mesh lining  
(95% nylon/8% spandex)  
Pleat at front under placket  
Full length sleeve with cuff  
Above the knee length  
(35.5" HPS)  
Deep hem added  
to adjust length

**39SR602B**  
(BEADED)

Hand beading  
on neckline

**Raspberry  
Teal**



**Kinsley  
39SR6040**

Crepe de chine  
(100% viscose)  
V-neck with shaped waist  
3/4 length bell sleeve  
Buttons function only  
at bottom skirt opening  
Pockets at hip  
Invisible zip at back with  
smocked panel for slim fit  
Maxi length (58" HPS)

**Raspberry  
Teal**





**Delilah**  
**39SR7020**

-----  
Twill  
(55% viscose/45% rayon)  
Full lined  
(100% viscose)  
Pockets at front  
Low hip length  
with angled front opening

**Raspberry**  
**Teal**



**Delilah**  
**39SR7020**

-----  
Twill  
(55% viscose/45% rayon)  
Full lined  
(100% viscose)  
Pockets at front  
Low hip length  
with angled front opening

**Raspberry**  
**Teal**



Trail  
Blazer



**Claire**  
**39TZ2020**

-----  
Embroidered crepe de chine  
(100% viscose)  
Long sleeve  
with smocked cuff  
Hip length  
with curved hem

**Black**



**Audrey**  
**39TZ6020**

-----  
Embroidered crepe de chine  
(100% viscose)  
Body is lined  
(100% viscose)  
Slim fit through rib cage  
Tiered voluminous skirt  
Long sleeve  
with smocked cuff  
Above the knee length  
(35.5" HPS)

**Black**  
**Olive**



**Audrey**  
**39TZ6020**

Embroidered crepe de chine  
(100% viscose)  
Body is lined  
(100% viscose)  
Slim fit through rib cage  
Tiered voluminous skirt  
Long sleeve  
with smocked cuff  
Above the knee length  
(35.5" HPS)

**Black**  
**Olive**

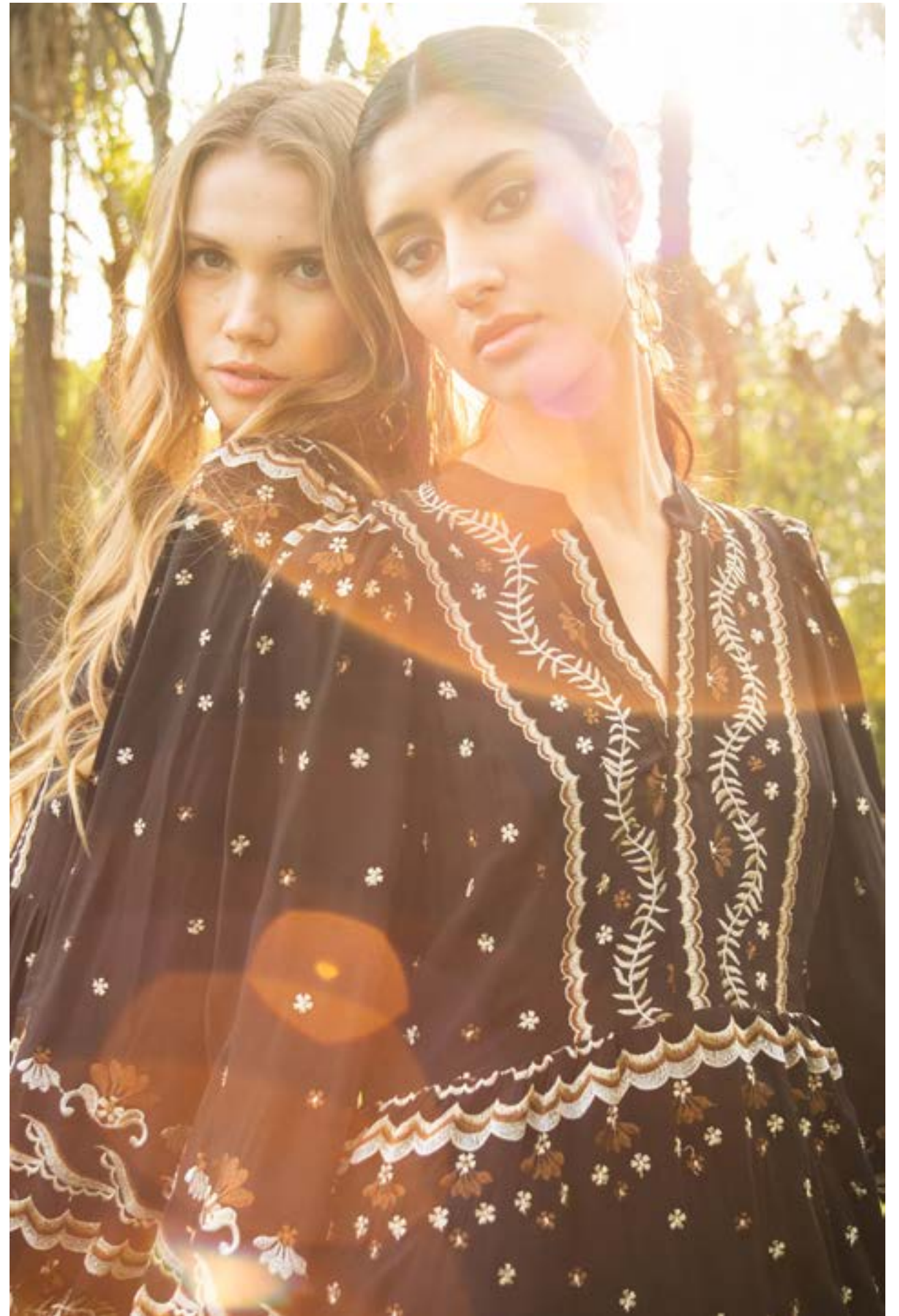


**Audrey**  
**39TZ602M**

Embroidered crepe de chine  
(100% viscose)  
Body is lined  
(100% viscose)  
Slim fit through rib cage  
Tiered voluminous skirt  
Long sleeve  
with smocked cuff  
Maxi length  
(58" HPS)

**Black**





A fashion advertisement featuring two women standing by a swimming pool. The woman on the left has dark hair and is wearing a dark, patterned long-sleeved top and a long, tiered white skirt. The woman on the right has long, wavy blonde hair and is wearing a matching dark, patterned long-sleeved dress. They are both wearing gold boots. The background includes palm trees, a lounge chair, and a swimming pool. The text 'Coming up Roses' is overlaid in the upper right corner.

Coming  
up  
Roses



**Aaliyah  
39UM2020**

Velvet burnout  
(60% silk/40% viscose)  
Set in lining at body  
(100% viscose)  
Shirring at front under yoke  
Long sleeve, hip length

**Black  
Teal**



**Aaliyah  
39UM2020**

Velvet burnout  
(60% silk/40% viscose)  
Set in lining at body  
(100% viscose)  
Shirring at front under yoke  
Long sleeve, hip length

**Black  
Teal**



**Aaliyah  
39UM202S**

Velvet burnout  
(60% silk/40% viscose)  
Set in lining at body  
(100% viscose)  
Shirring at front under yoke  
Long sleeve, hip length

**Black**



**Ruby  
39UM6020**

Velvet burnout  
(60% silk/40% viscose)  
Set in lining at body  
(100% viscose)  
Smocked waistband  
Skirt with tier at hem  
Pockets at hips  
Elbow length balloon sleeve  
Above the knee length  
(35.5" HPS)

**Black  
Teal**



**Ruby  
39UM6020**

Velvet burnout  
(60% silk/40% viscose)  
Set in lining at body  
(100% viscose)  
Smocked waistband  
Skirt with tier at hem  
Pockets at hips  
Elbow length balloon sleeve  
Above the knee length  
(35.5" HPS)

**Black  
Teal**



**Ruby  
39UM602S**

Velvet burnout  
(60% silk/40% viscose)  
Set in lining at body  
(100% viscose)  
Smocked waistband  
Skirt with tier at hem  
Pockets at hips  
Elbow length balloon sleeve  
Above the knee length  
(35.5" HPS)

**Black**



**Brooklyn  
39UM6040**

-----  
Velvet burnout  
(60% silk/40% viscose)  
Set in lining at body  
(100% viscose)  
Smocked waistband  
Voluminous tiered skirt  
Pockets at hips  
Long sleeve  
with smocked cuff  
Maxi length  
(58" HPS)

**Black  
Teal**





**Brooklyn  
39UM6040**

-----  
Velvet burnout  
(60% silk/40% viscose)  
Set in lining at body  
(100% viscose)  
Smocked waistband  
Voluminous tiered skirt  
Pockets at hips  
Long sleeve  
with smocked cuff  
Maxi length  
(58" HPS)

**Black  
Teal**



**Brooklyn  
39UM604S**

-----  
Velvet burnout  
(60% silk/40% viscose)  
Set in lining at body  
(100% viscose)  
Smocked waistband  
Voluminous tiered skirt  
Pockets at hips  
Long sleeve  
with smocked cuff  
Maxi length  
(58" HPS)

**Black**







**Presley**  
**39UM6060**

-----  
Matte jersey  
(96% polyester/  
4% spandex)  
Slim fit through rib cage  
Easy swing fit through body  
Pockets at hips  
Long sleeve  
with smocked cuff  
Above the knee length  
(35.5" HPS)

**Black**  
**Teal**



**Presley**  
**39UM6060**

-----  
Matte jersey  
(96% polyester/  
4% spandex)  
Slim fit through rib cage  
Easy swing fit through body  
Pockets at hips  
Long sleeve  
with smocked cuff  
Above the knee length  
(35.5" HPS)

**Black**  
**Teal**

This book is a presentation of a selection of Hale Bob product and is correct at time of publication.

To view the entire collection of products including updates and additions. You can view product line sheets at [halebob.com](http://halebob.com) by logging into the "Merchant" section of our website.

Prices and products posted in this book are current at time of publication but are subject to change.

**Sales Director**

East Coast  
South East  
Puerto Rico  
Canada  
Majors

**Cathy Cooley**

310-963-2463  
[cathy@halebob.com](mailto:cathy@halebob.com)

**Sales Executive**

Mexico  
Central America  
South America

**Maria Garcia**

323-394-1739  
[mariag@halebob.com](mailto:mariag@halebob.com)

**Sales Executive**

West Coast

**For Marketing & Press Inquiries:**

Marianna Gunther  
[marianna@halebob.com](mailto:marianna@halebob.com)

**HALE BOB**  
LOS ANGELES

