

A woman with long, wavy brown hair and bangs is the central figure, wearing a long, flowing dress with a complex, colorful pattern in shades of pink, orange, and purple. She is standing in a lush garden filled with various green plants and trees. The sun is shining brightly from behind her, creating a lens flare effect. The overall mood is bright and natural.

HALE BOB

LOS ANGELES

Fall 2 2023



**Louise
37AX2020**

Crepe de chine
(100% silk)
Voluminous sleeve
with cuff
Low hip length
with curved hem

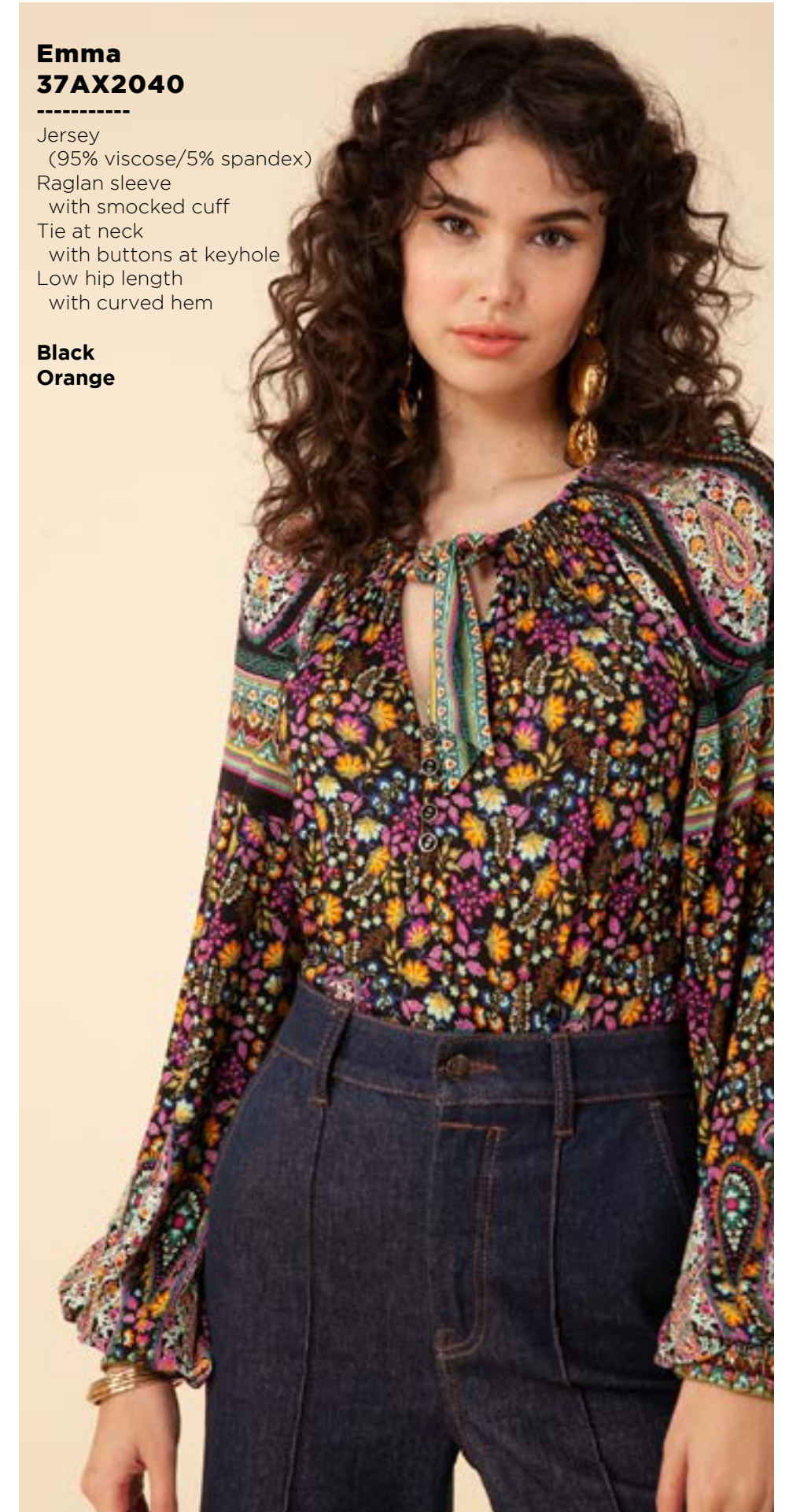
**Black
Orange**



**Louise
37AX2020**

Crepe de chine
(100% silk)
Voluminous sleeve
with cuff
Low hip length
with curved hem

**Black
Orange**



**Emma
37AX2040**

Jersey
(95% viscose/5% spandex)
Raglan sleeve
with smocked cuff
Tie at neck
with buttons at keyhole
Low hip length
with curved hem

**Black
Orange**



Emma
37AX2040

Jersey
(95% viscose/5% spandex)
Raglan sleeve
with smocked cuff
Tie at neck
with buttons at keyhole
Low hip length
with curved hem

Black
Orange



Ambre
37AX6020

Washed Charmeuse
(25% silk/75% viscose)
A-line body
7/8 length bell sleeve
Above th knee length
(35" HPS)

Black
Orange



Ambre
37AX6020

Washed Charmeuse
(25% silk/75% viscose)
A-line body
7/8 length bell sleeve
Above th knee length
(35" HPS)

Black
Orange



Rose
37AX6040

Matte jersey
(96% polyester/4% spandex)
Mesh lining
(95% nylon/8% spandex)
Slim fit through waist
Long full sleeve with cuff
A-line skirt with pleat at waist
Below the knee length
(40"HPS)

Black
Orange



Rose
37AX6040

Matte jersey
(96% polyester/4% spandex)
Mesh lining
(95% nylon/8% spandex)
Slim fit through waist
Long full sleeve with cuff
A-line skirt with pleat at waist
Below the knee length
(40"HPS)

Black
Orange



**Anna
37AX6060**

Crepe
(55% viscose/
45% rayon)
Slim fit through waist
with smocked panel
at back
Invisible zip at back
Long full sleeve
with smocked cuff
Tiered voluminous skirt
Maxi length (58" HPS)

NOTE: sample is long,
the length will be fixed
in production

**Black
Orange**

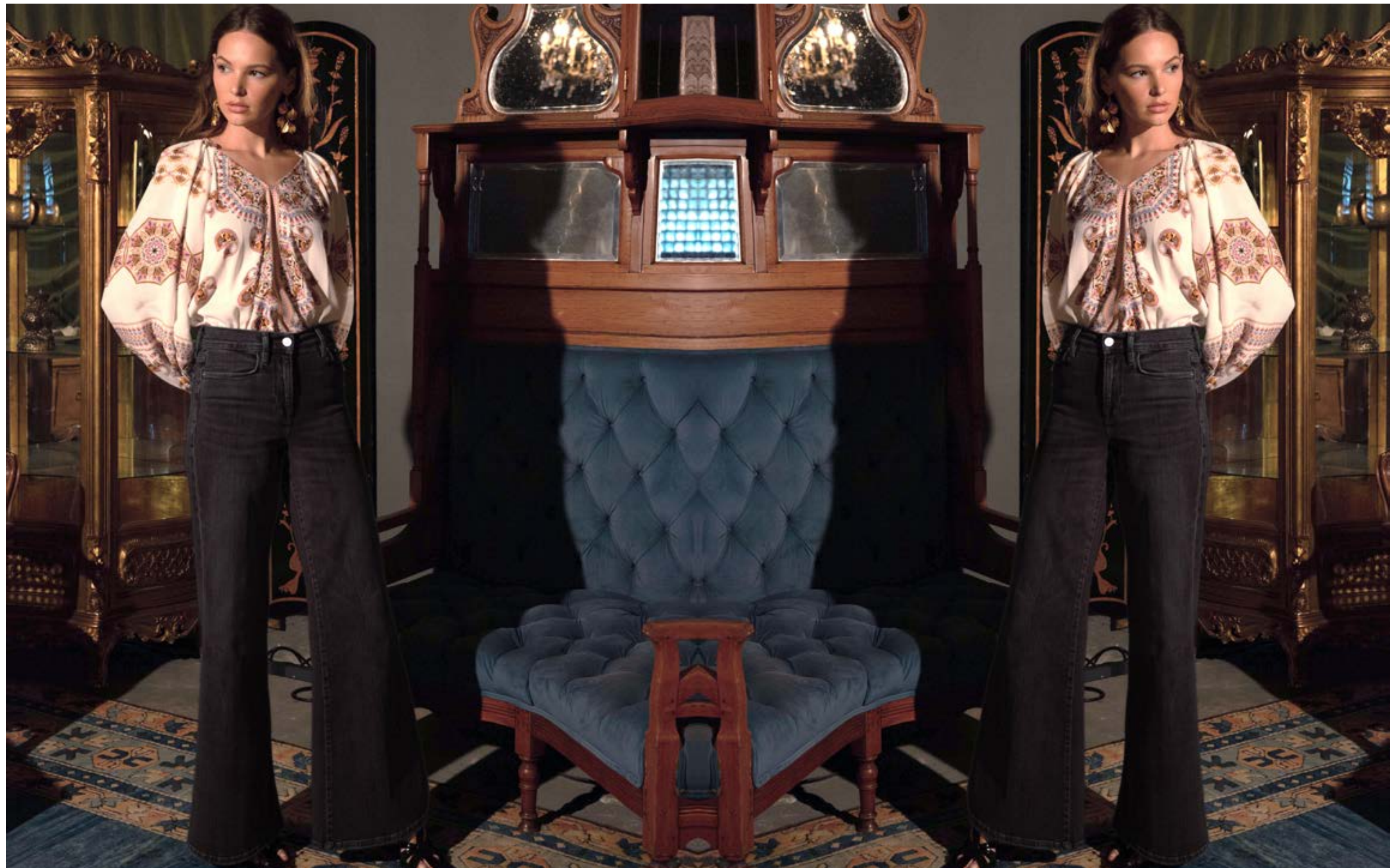


**Anna
37AX6060**

Crepe
(55% viscose/45% rayon)
Slim fit through waist
with smocked panel at back
Invisible zip at back
Long full sleeve
with smocked cuff
Tiered voluminous skirt
Maxi length (58" HPS)

NOTE: sample is long,
the length will be fixed
in production

**Black
Orange**





**Blake
ODEN510A**

Made in the USA
Cotton stretch denim
High waisted fit
Wide leg with flare
Stitched pin tuck
Side pockets at front
Patch pockets at back
Shipped with 33" inseam
Deep hem to adjust length

**Black wash
Dark Blue Wash**

Denim will be available in
seasons 7, 8, and 9.
Please specify delivery date
on purchase order.



A woman with long brown hair and bangs, wearing a blue dress with a floral pattern, stands in a sunlit garden. She is looking down and holding the hem of her dress. The background features lush green foliage and trees under a bright sky. The text "Sweet Dreams" is overlaid in the upper right corner.

Sweet
Dreams

Alba
37DR2020

Velvet Burnout
(60% silk/40% viscose)
Set in lining at body
(100% viscose)
Buttons at front keyhole
Tie at neck
with buttons at keyhole
Long raglan sleeve
Smocked cuff
with ruffle
Hip length
with curved hem

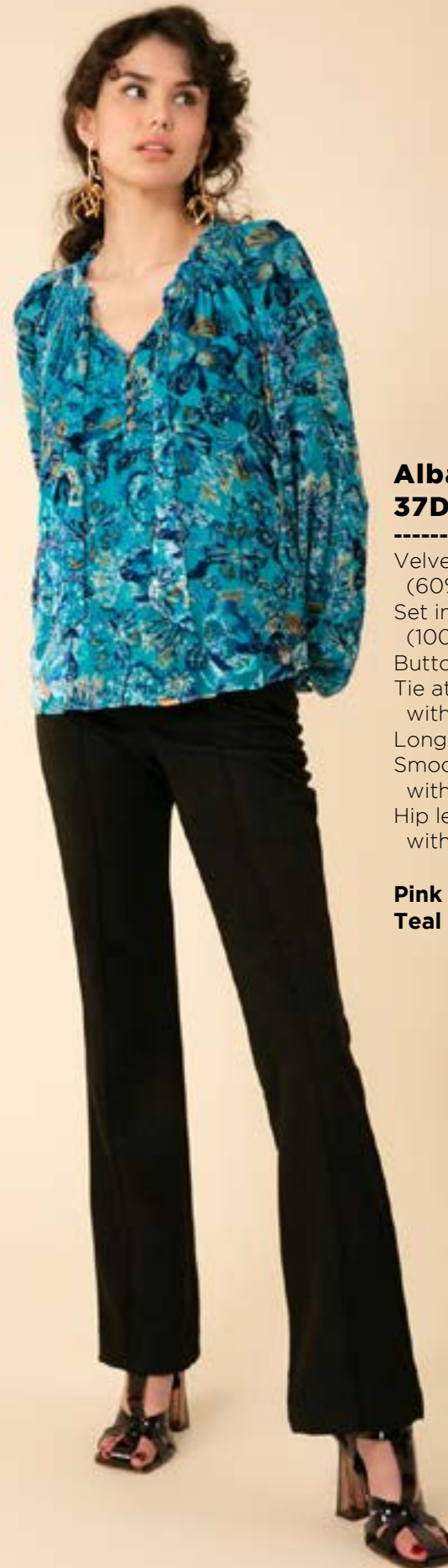
Pink
Teal



Alba
37DR2020

Velvet Burnout
(60% silk/40% viscose)
Set in lining at body
(100% viscose)
Buttons at front keyhole
Tie at neck
with buttons at keyhole
Long raglan sleeve
Smocked cuff
with ruffle
Hip length
with curved hem

Pink
Teal



Alba
37DR202S

Velvet Burnout
(60% silk/40% viscose)
Set in lining at body
(100% viscose)
Buttons at front keyhole
Tie at neck
with buttons at keyhole
Long raglan sleeve
Smocked cuff
with ruffle
Hip length
with curved hem

Black



Romy
37DR2040

Velvet Burnout
(60% silk/40% viscose)
Set in lining at body
(100% viscose)
Keyhole at front neck
Scarf ties at side neck
High hip length
with curved hem

Pink
Teal



Romy
37DR2040

Velvet Burnout
(60% silk/40% viscose)
Set in lining at body
(100% viscose)
Keyhole at front neck
Scarf ties at side neck
High hip length
with curved hem

Pink
Teal



Romy
37DR204S

Velvet Burnout
(60% silk/40% viscose)
Set in lining at body
(100% viscose)
Keyhole at front neck
Scarf ties at side neck
High hip length
with curved hem

Black



Mia
37DR6020

Velvet Burnout
(60% silk/40% viscose)
Set in lining at body
(100% viscose)
Balloon sleeve
with elastic at opening
Slim fit body
with invisible zip
Self covered belt included
Midi length (45" HPS)

Pink
Teal



Mia
37DR6020

Velvet Burnout
(60% silk/40% viscose)
Set in lining at body
(100% viscose)
Balloon sleeve
with elastic at opening
Slim fit body
with invisible zip
Self covered belt included
Midi length (45" HPS)

Pink
Teal



Mia
37DR602S

Velvet Burnout
(60% silk/40% viscose)
Set in lining at body
(100% viscose)
Balloon sleeve
with elastic at opening
Slim fit body
with invisible zip
Self covered belt included
Midi length (45" HPS)

Black



Lina
37DR6040

Velvet Burnout
(60% silk/40% viscose)
Set in lining at body
(100% viscose)
Smocking around neck
Buttons at front keyhole
Long sleeve with elastic
Voluminous tiered skirt
Maxi length (58" HPS)

Pink
Teal



Lina
37DR6040

Velvet Burnout
(60% silk/40% viscose)
Set in lining at body
(100% viscose)
Smocking around neck
Buttons at front keyhole
Long sleeve with elastic
Voluminous tiered skirt
Maxi length (58" HPS)

Pink
Teal





Lina
37DR604S

Velvet Burnout
(60% silk/40% viscose)
Set in lining at body
(100% viscose)
Smocking around neck
Buttons at front keyhole
Long sleeve with elastic
Voluminous tiered skirt
Maxi length (58" HPS)

Black





Breathe Easy

Lou
37EB2020

Twill (100% rayon)
Buttons at front neck
Voluminous kimono
sleeve with elastic cuff
Smocking at waist
High hip length

Black
Blue



Lou
37EB2020

Twill (100% rayon)
Buttons at front neck
Voluminous kimono
sleeve with elastic cuff
Smocking at waist
High hip length

Black
Blue



Julia
37EB2040

Matte jersey
(96% polyester/
4% spandex)
Buttons at front boy
Long sleeve with cuff
Slim easy fit body
Low hip length

Black
Blue



Julia
37EB2040

Matte jersey
(96% polyester/
4% spandex)
Buttons at front boy
Long sleeve with cuff
Slim easy fit body
Low hip length

Black
Blue





**Lena
37EB5020**

Corduroy
(100% cotton)
Pockets at hips
Flat front waist
with elastic back
Slim fit leg
Ankle length
(29" Inseam)

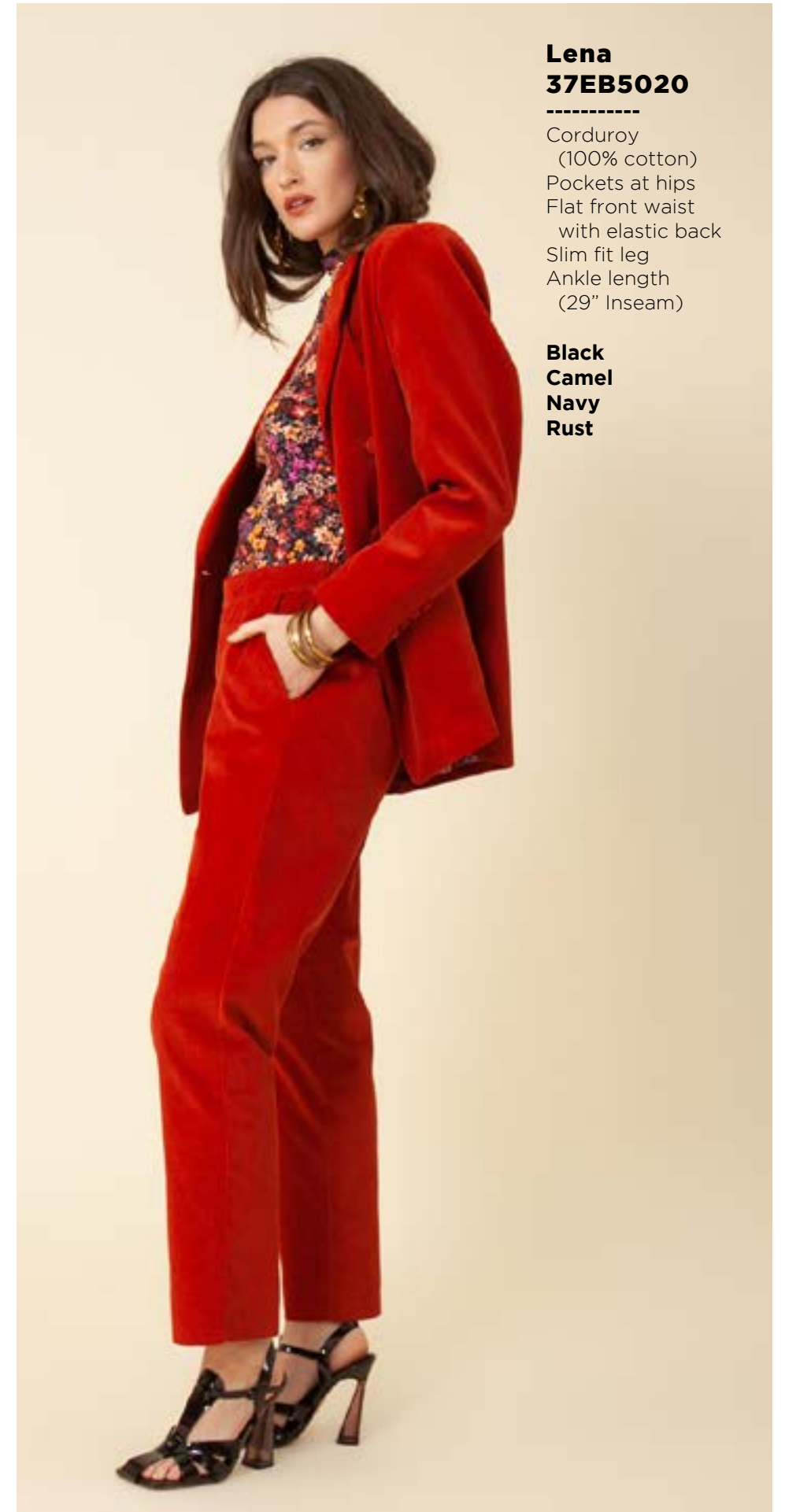
**Black
Camel
Navy
Rust**



**Lena
37EB5020**

Corduroy
(100% cotton)
Pockets at hips
Flat front waist
with elastic back
Slim fit leg
Ankle length
(29" Inseam)

**Black
Camel
Navy
Rust**



**Lena
37EB5020**

Corduroy
(100% cotton)
Pockets at hips
Flat front waist
with elastic back
Slim fit leg
Ankle length
(29" Inseam)

**Black
Camel
Navy
Rust**

Chloé
37EB6020

Matte jersey
(96% polyester/
4% spandex)
Mesh lining
(95% nylon/8% spandex)
Pleat at front under placket
Full length sleeve with cuff
Above the knee length
(35.5" HPS)
Deep hem added
to adjust length



36AU202B

(BEADED)

Hand beading
on neckline

Black
Blue
Raspberry

Chloé
37EB6020

Matte jersey
(96% polyester/
4% spandex)
Mesh lining
(95% nylon/8% spandex)
Pleat at front under placket
Full length sleeve with cuff
Above the knee length
(35.5" HPS)
Deep hem added
to adjust length

36AU202B

(BEADED)

Hand beading
on neckline

Black
Blue
Raspberry



Chloé
37EB6020

Matte jersey
(96% polyester/
4% spandex)
Mesh lining
(95% nylon/8% spandex)
Pleat at front under placket
Full length sleeve with cuff
Above the knee length
(35.5" HPS)
Deep hem added
to adjust length

36AU202B

(BEADED)

Hand beading
on neckline

Black
Blue
Raspberry





Agathe
37EB6040

Twill (100% rayon)
Slim fit through rib cage
7/8 length sleeve with ruffle
Tiered swingy fit at skirt
Above the knee length:
35.5" HPS

Black
Blue



Agathe
37EB6040

Twill (100% rayon)
Slim fit through rib cage
7/8 length sleeve with ruffle
Tiered swingy fit at skirt
Above the knee length:
35.5" HPS

Black
Blue
v

Agathe
37EB604D

Twill (100% rayon)
Slim fit through
rib cage
7/8 length sleeve
with ruffle
Tiered swingy fit
at skirt
Ankle length:
50.5" HPS

Black



Lea
37EB7020

Corduroy
(100% cotton)
Full lined
(100% viscose challis)
Buttons at front
Mid-thigh length

Black
Camel
Navy
Rust



Lea
37EB7020

Corduroy
(100% cotton)
Full lined
(100% viscose challis)
Buttons at front
Mid-thigh length

Black
Camel
Navy
Rust



Lea
37EB7020

Corduroy
(100% cotton)
Full lined
(100% viscose challis)
Buttons at front
Mid-thigh length

Black
Camel
Navy
Rust



A woman with long, wavy brown hair and bangs stands in a room with green walls. She is wearing a vibrant red suit consisting of a jacket and matching trousers, over a dark floral-patterned top. Her hands are tucked into her pockets. Behind her is a framed painting of a classical scene. To the left, an arched doorway with ornate woodwork leads to another room with red curtains and a window. A white decorative screen is visible on the far left. The lighting is dramatic, with strong shadows and highlights.

Down
To
Earth

Juliette
37NR2020

Chiffon (100% rayon)
Body is lined
(100% viscose)
Buttons at front neck
Long full sleeve
with smocked cuff
Low hip length
with curved hem

Black
Gold



Juliette
37NR2020

Chiffon (100% rayon)
Body is lined
(100% viscose)
Buttons at front neck
Long full sleeve
with smocked cuff
Low hip length
with curved hem

Black
Gold

Inaya
37NR2040

Soft jersey
(95% micro modal/
5% spandex)
Twisted drape
at front bust, slim fit
Voluminous long sleeve
with cuff
Swingy skirt below
waistband
High hip length

Black
Gold



Inaya
37NR2040

Soft jersey
(95% micro modal/
5% spandex)
Twisted drape
at front bust, slim fit
Voluminous long sleeve
with cuff
Swingy skirt below
waistband
High hip length

Black
Gold



Lilou
37NR2060

Soft jersey
(95% micro modal/
5% spandex)
Slim fit body & sleeve
Mid-rise turtleneck
Hip length body

Black
Gold



Lilou
37NR2060

Soft jersey
(95% micro modal/
5% spandex)
Slim fit body & sleeve
Mid-rise turtleneck
Hip length body

Black
Gold





**Lilou
37NR206S**

Soft jersey
(95% micro modal/
5% spandex)
Slim fit body & sleeve
Mid-rise turtleneck
Hip length body

**Black
Emerald
Wine**



**Lilou
37NR206S**

Soft jersey
(95% micro modal/
5% spandex)
Slim fit body & sleeve
Mid-rise turtleneck
Hip length body

**Black
Emerald
Wine**



**Lilou
37NR206S**

Soft jersey
(95% micro modal/
5% spandex)
Slim fit body & sleeve
Mid-rise turtleneck
Hip length body

**Black
Emerald
Wine**

Zoe
37NR6020

Soft woven
(100% viscose)
Asymmetrical trim
detailing
Swingy voluminous tiers
Long sleeve
with smocked cuff
Above the knee length
(35.5" HPS)

Black
Gold



Zoe
37NR6020

Soft woven
(100% viscose)
Asymmetrical trim
detailing
Swingy voluminous tiers
Long sleeve
with smocked cuff
Above the knee length
(35.5" HPS)

Black
Gold





**Jeanne
37NR6040**

Lurex Jacquard
(100% polyester)
Long sleeve
with smocked cuff
Tiered voluminous skirt
with slit at lower tiers
Ankle length with hi/low
(49" HPS at front,
52" at back)

**Black
Gold**



**Jeanne
37NR6040**

Lurex Jacquard
(100% polyester)
Long sleeve
with smocked cuff
Tiered voluminous skirt
with slit at lower tiers
Ankle length with hi/low
(49" HPS at front,
52" at back)

**Black
Gold**



A fashion advertisement featuring two women. The woman on the left has long, wavy blonde hair and is wearing a dark brown, long-sleeved top with intricate gold and brown geometric patterns. The woman on the right has long, wavy dark hair and is wearing a dark brown, long-sleeved top with gold floral embroidery. They are both looking towards the camera against a clear blue sky. The text 'Open Road' is overlaid in the upper right corner.

Open Road



Leonie
37RD2020

BLK/BRN: Embroidered crepe
(55% viscose/45% rayon)
BLU: Embroidered chambray
(100% cotton)
Yoke at front with buttons
Hip length with curved hem

Black
Brown



Leonie
37RD2020

BLK/BRN: Embroidered crepe
(55% viscose/45% rayon)
BLU: Embroidered chambray
(100% cotton)
Yoke at front with buttons
Hip length with curved hem

Black
Brown



Charlie
37RD3020

Wool Blend Jacquard Sweater
(58% Acrylic/
30% Polyester/10% wool/
2% spandex)
Shawl collar, fringe at edges
Wrap body with belt
Low hip length (28" HPS)

Black
Blue
Ivory





Charlie
37RD3020

Wool Blend Jacquard Sweater
(58% Acrylic/
30% Polyester/10% wool/
2% spandex)
Shawl collar, fringe at edges
Wrap body with belt
Low hip length (28" HPS)

Black
Blue
Ivory



Charlie
37RD3020

Wool Blend Jacquard Sweater
(58% Acrylic/
30% Polyester/10% wool/
2% spandex)
Shawl collar, fringe at edges
Wrap body with belt
Low hip length (28" HPS)

Black
Blue
Ivory



Anais
37RD3040

Wool Blend Jacquard Sweater
(58% Acrylic/
30% Polyester/10% wool/
2% spandex)
Shawl collar, fringe at edges
Wrap body with belt
Midi length (46" HPS)

Black
Blue
Ivory



Anais
37RD3040

Wool Blend Jacquard Sweater
(58% Acrylic/
30% Polyester/10% wool/
2% spandex)
Shawl collar, fringe at edges
Wrap body with belt
Midi length (46" HPS)

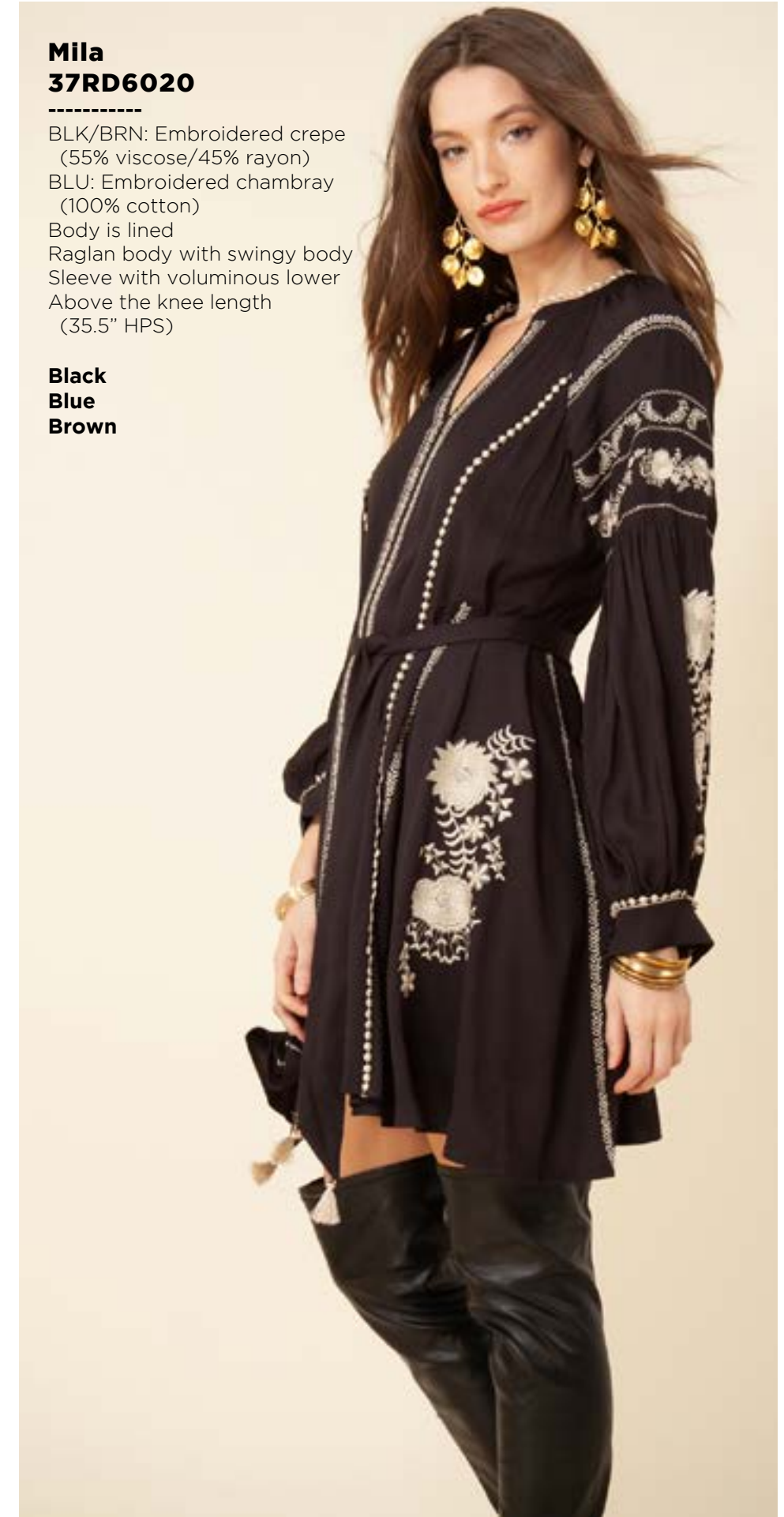
Black
Blue
Ivory



Anais
37RD3040

Wool Blend Jacquard Sweater
(58% Acrylic/
30% Polyester/10% wool/
2% spandex)
Shawl collar, fringe at edges
Wrap body with belt
Midi length (46" HPS)

Black
Blue
Ivory



Mila
37RD6020

BLK/BRN: Embroidered crepe
(55% viscose/45% rayon)
BLU: Embroidered chambray
(100% cotton)
Body is lined
Raglan body with swingy body
Sleeve with voluminous lower
Above the knee length
(35.5" HPS)

Black
Blue
Brown



Mila
37RD6020

BLK/BRN: Embroidered crepe
(55% viscose/45% rayon)
BLU: Embroidered chambray
(100% cotton)
Body is lined
Raglan body with swingy body
Sleeve with voluminous lower
Above the knee length
(35.5" HPS)

Black
Blue
Brown



Mila
37RD6020

BLK/BRN: Embroidered crepe
(55% viscose/45% rayon)
BLU: Embroidered chambray
(100% cotton)
Body is lined
Raglan body with swingy body
Sleeve with voluminous lower
Above the knee length
(35.5" HPS)

Black
Blue
Brown



Luna
37RD6040

BLK/BRN: Embroidered crepe
(55% viscose/45% rayon)
BLU: Embroidered chambray
(100% cotton)
Body is lined
Easy fit, slim through rib cage
Tiered, swingy fit at skirt
Long sleeve
with tier at lower part
Cuff at wrist
Above the knee length
(35.5" HPS)

Black
Blue
Brown



**Luna
37RD6040**

BLK/BRN: Embroidered crepe
(55% viscose/45% rayon)
BLU: Embroidered chambray
(100% cotton)
Body is lined
Easy fit, slim through rib cage
Tiered, swingy fit at skirt
Long sleeve
with tier at lower part
Cuff at wrist
Above the knee length
(35.5" HPS)

**Black
Blue
Brown**



**Luna
37RD6040**

BLK/BRN: Embroidered crepe
(55% viscose/45% rayon)
BLU: Embroidered chambray
(100% cotton)
Body is lined
Easy fit, slim through rib cage
Tiered, swingy fit at skirt
Long sleeve
with tier at lower part
Cuff at wrist
Above the knee length
(35.5" HPS)

**Black
Blue
Brown**

Luna
37RD604M

BLK/BRN: Embroidered crepe
(55% viscose/45% rayon)
BLU: Embroidered chambray
(100% cotton)
Body is lined
Easy fit, slim through rib cage
Tiered, swingy fit at skirt
Long sleeve
with tier at lower part
Cuff at wrist
Maxi length (58" HPS)

Black
Brown



Luna
37RD604M

BLK/BRN: Embroidered crepe
(55% viscose/45% rayon)
BLU: Embroidered chambray
(100% cotton)
Body is lined
Easy fit, slim through rib cage
Tiered, swingy fit at skirt
Long sleeve
with tier at lower part
Cuff at wrist
Maxi length (58" HPS)

Black
Brown



Retro Rules





**Adele
37UE2020**

Matte jersey
(96% polyester/
4% spandex)
Ultrasuede contrasts
(97% polyester/
3% spandex)
Equestrian buckles
at neck (not functional)
Long sleeve
with snaps at cuffs
Hip length
with curved hem

**Ivory
Navy**



**Adele
37UE2020**

Matte jersey
(96% polyester/
4% spandex)
Ultrasuede contrasts
(97% polyester/
3% spandex)
Equestrian buckles
at neck (not functional)
Long sleeve
with snaps at cuffs
Hip length
with curved hem

**Ivory
Navy**

**Victoire
37UE2040**

Twill
(55% viscose/
45% rayon)
Buttons at front body
Voluminous sleeve
with cuff
Hip length
with curved hem

**Ivory
Navy**



**Victoire
37UE2040**

Twill
(55% viscose/
45% rayon)
Buttons at front body
Voluminous sleeve
with cuff
Hip length
with curved hem

**Ivory
Navy**





Sofia
37UE2060

Quilted Twill
(55% viscose/
45% rayon)
Snaps at front body
Pockets at front
Long sleeve
High hip length

Ivory
Navy



Sofia
37UE2060

Quilted Twill
(55% viscose/
45% rayon)
Snaps at front body
Pockets at front
Long sleeve
High hip length

Ivory
Navy

Inès
37UE3020

Wool Blend Jacquard Sweater
(58% Acrylic/ 30% Polyester/
10% wool/ 2%spandex)
Shawl collar, fringe at edges
Wrap front body
with buttons at hips
High hip length (22" HPS)

Grey
Ivory



Inès
37UE3020

Wool Blend Jacquard Sweater
(58% Acrylic/ 30% Polyester/
10% wool/ 2%spandex)
Shawl collar, fringe at edges
Wrap front body
with buttons at hips
High hip length (22" HPS)

Grey
Ivory



Diane
37UE3040

Wool Blend Jacquard Sweater
(58% Acrylic/ 30% Polyester/
10% wool/ 2%spandex)
Shawl collar, fringe at edges
Wrap front body with belt
Midi length (46" HPS)

Grey
Ivory



Diane
37UE3040

Wool Blend Jacquard Sweater
(58% Acrylic/ 30% Polyester/
10% wool/ 2%spandex)
Shawl collar, fringe at edges
Wrap front body with belt
Midi length (46" HPS)

Grey
Ivory





**Camille
37UE5020**

Twill
(55% viscose/45%
rayon)
Pockets at hips
Flat front waist
with elastic back
Slim fit leg
Tie at waist
Ankle length
(29" Inseam)

**Ivory
Navy**



**Camille
37UE5020**

Twill
(55% viscose/45%
rayon)
Pockets at hips
Flat front waist
with elastic back
Slim fit leg
Tie at waist
Ankle length
(29" Inseam)

**Ivory
Navy**

**Victoria
37UE5040**

Stretch ultrasuede
(97% polyester/
3% spandex)
Pintuck at front leg
High waist
with functional fly
Tie at waist (removable)
Flared leg
Full length (32" Inseam)

**Black
Camel
Chocolate
Eggplant
Navy**



**Victoria
37UE5040**

Stretch ultrasuede
(97% polyester/
3% spandex)
Pintuck at front leg
High waist
with functional fly
Tie at waist (removable)
Flared leg
Full length (32" Inseam)

**Black
Camel
Chocolate
Eggplant
Navy**



**Victoria
37UE5040**

Stretch ultrasuede
(97% polyester/
3% spandex)
Pintuck at front leg
High waist
with functional fly
Tie at waist (removable)
Flared leg
Full length (32" Inseam)

**Black
Camel
Chocolate
Eggplant
Navy**



Victoria
37UE5040

Stretch ultrasuede
(97% polyester/
3% spandex)
Pintuck at front leg
High waist
with functional fly
Tie at waist (removable)
Flared leg
Full length (32" Inseam)

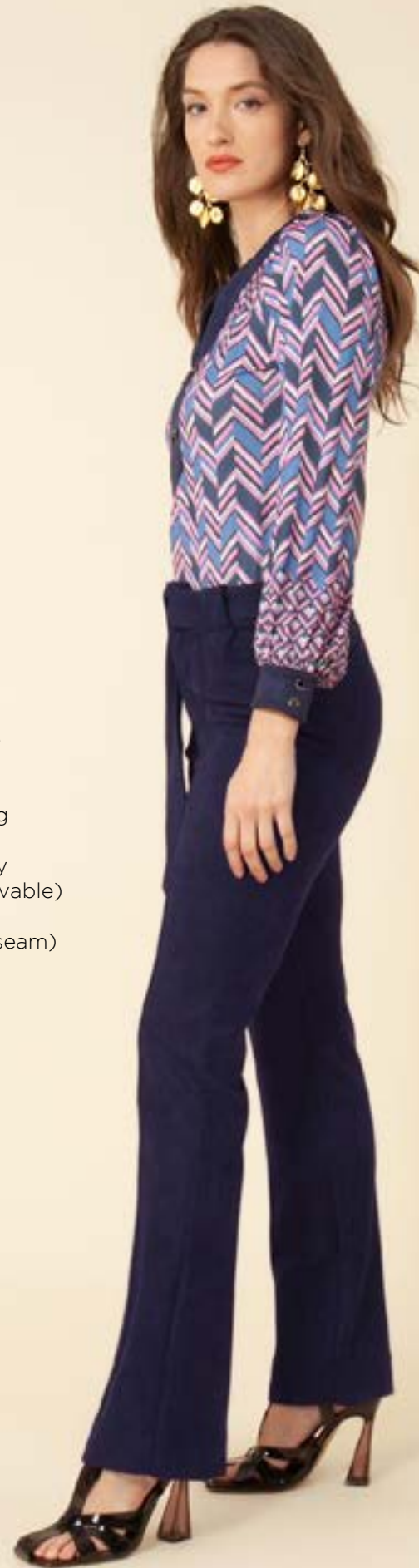
Black
Camel
Chocolate
Eggplant
Navy



Victoria
37UE5040

Stretch ultrasuede
(97% polyester/
3% spandex)
Pintuck at front leg
High waist
with functional fly
Tie at waist (removable)
Flared leg
Full length (32" Inseam)

Black
Camel
Chocolate
Eggplant
Navy



Lucie
37UE6020

Twill
(55% viscose/
45% rayon)
Ultrasuede contrasts
(97% polyester/
3% spandex)
Metal zip at front neck
Snaps at pockets/cuff
Above the knee length
(35.5" HPS)

Ivory
Navy



Lucie
37UE6020

Twill
(55% viscose/
45% rayon)
Ultrasuede contrasts
(97% polyester/
3% spandex)
Metal zip at front neck
Snaps at pockets/cuff
Above the knee length
(35.5" HPS)

Ivory
Navy



Margaux
37UE6040

Matte jersey
(96% polyester/
4% spandex)
Snaps at front body
Belt with metal d-ring
at waist
Long sleeve
with snap cuff
Midi-length (46" HPS)

Ivory
Navy



Margaux
37UE6040

Matte jersey
(96% polyester/
4% spandex)
Snaps at front body
Belt with metal d-ring
at waist
Long sleeve
with snap cuff
Midi-length (46" HPS)

Ivory
Navy





**Romane
37UE6060**

Stretch ultrasuede
(97% polyester/
3% span)
Slim easy, fit
Buttons at front body
Belt with D-ring at waist
Midi length (44" HPS)

**Black
Camel
Chocolate
Eggplant**



**Romane
37UE6060**

Stretch ultrasuede
(97% polyester/
3% span)
Slim easy, fit
Buttons at front body
Belt with D-ring at waist
Midi length (44" HPS)

**Black
Camel
Chocolate
Eggplant**



**Romane
37UE6060**

Stretch ultrasuede
(97% polyester/
3% span)
Slim easy, fit
Buttons at front body
Belt with D-ring at waist
Midi length (44" HPS)

**Black
Camel
Chocolate
Eggplant**



**Romane
37UE6060**

Stretch ultrasuede
(97% polyester/
3% span)
Slim easy, fit
Buttons at front body
Belt with D-ring at waist
Midi l length (44" HPS)

**Black
Camel
Chocolate
Eggplant**



HALE BOB

LOS ANGELES

Season 8



Paradise Found





Charlotte
38AR2020

Crepe de chine
(100% silk)
Flower enamel buttons
at neck
Voluminous sleeve with cuff
Hip length

Blue
Gold



Charlotte
38AR2020

Crepe de chine
(100% silk)
Flower enamel buttons at neck
Voluminous sleeve with cuff
Hip length

Blue
Gold



Alix
38AR2040

Viscose/rayon
charmeuse
(54% rayon/
46% viscose)
Elastic at neck
with tie at front
Flutter sleeves
Easy fit body
with curved hem

Gold

Melle
38AR3040

Wool Blend Jacquard Sweater
(58% Acrylic/ 30% Polyester/
10% wool/ 2%spandex)
Shawl collar, fringe at edges
Wrap body with belt
Midi length (46" HPS)

Black/Blue
Black/Brown



Melle
38AR3040

Wool Blend Jacquard Sweater
(58% Acrylic/ 30% Polyester/
10% wool/ 2%spandex)
Shawl collar, fringe at edges
Wrap body with belt
Midi length (46" HPS)

Black/Blue
Black/Brown



Lyana
38AR5020

Stretch Ponte
(63% viscose/
32% nylon/ 5% span)
Grosgrain ribbon trim
at side legs
Functional zip at front
High waist
Pintuck at front leg
Slim fit through thigh
to flare
Full length (31" Inseam)

Black
Brown





**Lyana
38AR5020**

Stretch Ponte
(63% viscose/
32% nylon/ 5% span)
Grosgrain ribbon trim
at side legs
Functional zip at front
High waist
Pintuck at front leg
Slim fit through thigh
to flare
Full length (31" Inseam)

**Black
Brown**

**Margot
38AR6020**

Washed chiffon
(70% rayon/30% silk)
Jersey lining
(95% viscose/
5% spandex)
Elastic smocking
at waist
Long sleeve
with smocked cuff
Tier at lower skirt
Above the knee length
(35.5" HPS)

**Blue
Gold**



**Margot
38AR6020**

Washed chiffon
(70% rayon/30% silk)
Jersey lining
(95% viscose/
5% spandex)
Elastic smocking
at waist
Long sleeve
with smocked cuff
Tier at lower skirt
Above the knee length
(35.5" HPS)

**Blue
Gold**



Louna
38AR6030

Matte jersey
(96% polyester/4% spandex)
Mesh lining
(95% nylon/8% spandex)
Pleat at front under placket
Full length sleeve with cuff
Above the knee length
(35.5" HPS)
Deep hem added
to adjust length

38AR603B

(BEADED)

Hand beading
on neckline

Blue
Gold



Louna
38AR6030

Matte jersey
(96% polyester/4% spandex)
Mesh lining
(95% nylon/8% spandex)
Pleat at front under placket
Full length sleeve with cuff
Above the knee length
(35.5" HPS)
Deep hem added
to adjust length

38AR603B

(BEADED)

Hand beading
on neckline

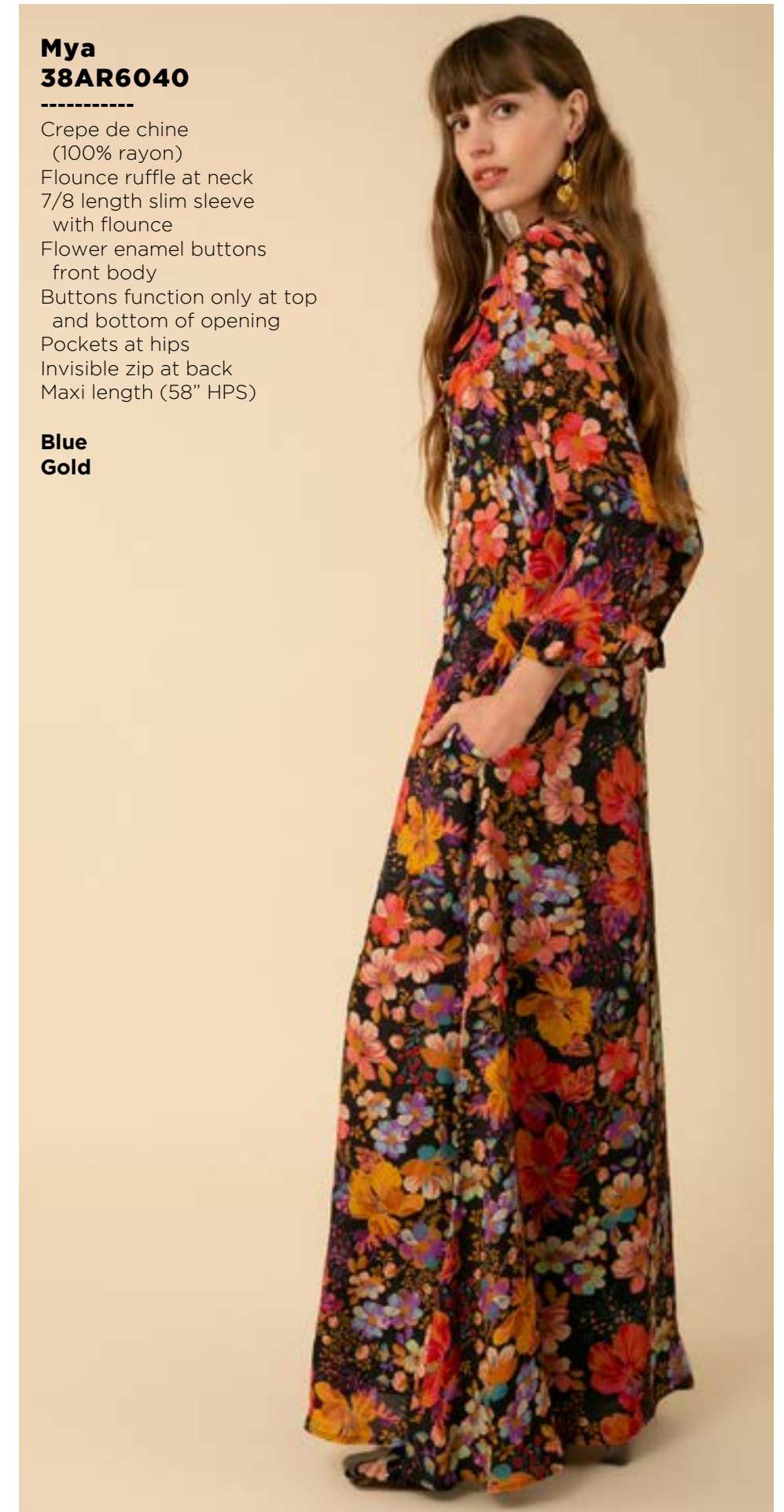
Blue
Gold



Mya
38AR6040

Crepe de chine
(100% rayon)
Flounce ruffle at neck
7/8 length slim sleeve
with flounce
Flower enamel buttons
front body
Buttons function only at top
and bottom of opening
Pockets at hips
Invisible zip at back
Maxi length (58" HPS)

Blue
Gold





Mya
38AR6040

Crepe de chine
(100% rayon)
Flounce ruffle at neck
7/8 length slim sleeve
with flounce
Flower enamel buttons
front body
Buttons function only at top
and bottom of opening
Pockets at hips
Invisible zip at back
Maxi length (58" HPS)

Blue
Gold



Manon
38AR6050

Stretch velvet
(90% polyester/
10% spandex)
Faux wrap style
with shirred skirt
Slim fit through body
Invisible zip at back
Above the knee length
(35.5" HPS)

Black
Burgundy
Emerald



Manon
38AR6050

Stretch velvet
(90% polyester/
10% spandex)
Faux wrap style
with shirred skirt
Slim fit through body
Invisible zip at back
Above the knee length
(35.5" HPS)

Black
Burgundy
Emerald





Manon
38AR6050

Stretch velvet
(90% polyester/
10% spandex)
Faux wrap style
with shirred skirt
Slim fit through body
Invisible zip at back
Above the knee length
(35.5" HPS)

Black
Burgundy
Emerald



Lya
38AR6060

Stretch velvet
(90% polyester/
10% spandex)
Shirring at front & back body
Adjustable shirring at bust
Slim fit body with voluminous
flounces at hem
Maxi length (58" HPS)

Black
Burgundy
Emerald



Lya
38AR6060

Stretch velvet
(90% polyester/
10% spandex)
Shirring at front & back body
Adjustable shirring at bust
Slim fit body with voluminous
flounces at hem
Maxi length (58" HPS)

Black
Burgundy
Emerald

Lya
38AR6060

Stretch velvet
(90% polyester/
10% spandex)
Shirring at front & back body
Adjustable shirring at bust
Slim fit body with voluminous
flounces at hem
Maxi length (58" HPS)

Black
Burgundy
Emerald



Elise
38AR9810

Habotai (100% Silk)
36" Square

Blue





Rise
and
Shine

Emy
38EH2020

Washed charmeuse
(54% rayon/46% viscose)
Voluminous sleeve
with pleating at shoulder
Elastic at wrist
Low hip length
with curved hem

Blue
Raspberry



Emy
38EH2020

Washed charmeuse
(54% rayon/46% viscose)
Voluminous sleeve
with pleating at shoulder
Elastic at wrist
Low hip length
with curved hem

Blue
Raspberry



Capucine
38EH2030

Lurex crinkle mesh
Body is lined
(100% viscose)
Voluminous sleeve
with pleating at shoulder
Elastic at wrist
Low hip length
with curved hem

Black
Blue
Champagne



Clemence
38EH5030

Lurex crinkle mesh
Fully lined
(100% viscose)
High waist with elastic
Pockets at hips
Easy full leg
Full length
(30" Inseam)

Black
Champagne

Capucine
38EH2030

Lurex crinkle mesh
Body is lined
(100% viscose)
Voluminous sleeve
with pleating at shoulder
Elastic at wrist
Low hip length
with curved hem

Black
Blue
Champagne



Capucine
38EH2030

Lurex crinkle mesh
Body is lined
(100% viscose)
Voluminous sleeve
with pleating at shoulder
Elastic at wrist
Low hip length
with curved hem

Black
Blue
Champagne



Clemence
38EH5030

Lurex crinkle mesh
Fully lined
(100% viscose)
High waist with elastic
Pockets at hips
Easy full leg
Full length
(30" Inseam)

Black
Champagne

Thea
38EH6020

Matte jersey
(96% polyester/4% span)
Elastic at waist
7/8 bell sleeve with ruffle
Tiered voluminous body
Above the knee length
(35.5" HPS)

Blue
Raspberry





Thea
38EH6020

Matte jersey
(96% polyester/4% span)
Elastic at waist
7/8 bell sleeve with ruffle
Tiered voluminous body
Above the knee length
(35.5" HPS)

Blue
Raspberry



Gabrielle
38EH6030

Lurex crinkle mesh
Body is lined
(100% viscose)
7/8 bell sleeve with ruffle
Layered ruffle skirt
Above the knee length
(35.5" HPS)

Black
Blue
Champagne



Gabrielle
38EH6030

Lurex crinkle mesh
Body is lined
(100% viscose)
7/8 bell sleeve with ruffle
Layered ruffle skirt
Above the knee length
(35.5" HPS)

Black
Blue
Champagne



Gabrielle
38EH6030

Lurex crinkle mesh
Body is lined
(100% viscose)
7/8 bell sleeve with ruffle
Layered ruffle skirt
Above the knee length
(35.5" HPS)

Black
Blue
Champagne



Alma
38EH6040

Chiffon
(100% Polyester)
Smocking & ruffle at neck
Hook & eye hidden at front neck
Elastic smocked waist
Long sleeve with smocked cuff
Tiered skirt with slit at lower tiers
Ankle length at front
with hi/low hem
(49" at front, 52" at back)

Blue
Raspberry



Alma
38EH6040

Chiffon
(100% Polyester)
Smocking & ruffle at neck
Hook & eye hidden at front neck
Elastic smocked waist
Long sleeve with smocked cuff
Tiered skirt with slit at lower tiers
Ankle length at front
with hi/low hem
(49" at front, 52" at back)

Blue
Raspberry



Lyna
38EH6050

Lurex crinkle mesh
Body is lined
(100% viscose)
Smocking & ruffle at neck
Hook & eye hidden at front neck
Elastic smocked waist
Long sleeve with smocked cuff
Tiered skirt with slit at lower tiers
Ankle length at front
with hi/low hem
(49" at front, 52" at back)

Black
Blue
Champagne



Lyna
38EH6050

Lurex crinkle mesh
Body is lined
(100% viscose)
Smocking & ruffle at neck
Hook & eye hidden at front neck
Elastic smocked waist
Long sleeve with smocked cuff
Tiered skirt with slit at lower tiers
Ankle length at front
with hi/low hem
(49" at front, 52" at back)

Black
Blue
Champagne



Lyna
38EH6050

Lurex crinkle mesh
Body is lined
(100% viscose)
Smocking & ruffle at neck
Hook & eye hidden
at front neck
Elastic smocked waist
Long sleeve
with smocked cuff
Tiered skirt with slit
at lower tiers
Ankle length at front
with hi/low hem
(49" at front,
52" at back)

Black
Blue
Champagne



Wonder Full

Alya
38LF2020

Embroidered crepe
(55% viscose/45% rayon)
Yoke detail at front & back
Full sleeve with cuff
Hip length with curved hem

Black
Emerald



Alya
38LF2020

Embroidered crepe
(55% viscose/45% rayon)
Yoke detail at front & back
Full sleeve with cuff
Hip length with curved hem

Black
Emerald





Aya
38LF5020

Stretch Ponte
(63% viscose/ 32% nylon/
5% spandex)
Functional zip at front
Buttons at front body
Slim through thigh to flare
Full length (31" Inseam)

Black
Brown



Aya
38LF5020

Stretch Ponte
(63% viscose/ 32% nylon/
5% spandex)
Functional zip at front
Buttons at front body
Slim through thigh to flare
Full length (31" Inseam)

Black
Brown



Lily
38LF6020

Embroidered Twill
(55% viscose/45% rayon)
Easy fit, slim through rib cage
Tiered, swingy fit at skirt
Long sleeve with tier
at lower part
Smocked cuff at wrist
Embroidered dot trim details
Above the knee length
(35.5" HPS)

Black
Emerald



Lily
38LF6020

Embroidered Twill
(55% viscose/45% rayon)
Easy fit, slim through rib cage
Tiered, swingy fit at skirt
Long sleeve with tier
at lower part
Smocked cuff at wrist
Embroidered dot trim details
Above the knee length
(35.5" HPS)

Black
Emerald



Lily
38LF602M

Embroidered Twill
(55% viscose/45% rayon)
Easy fit, slim through rib cage
Tiered, swingy fit at skirt
Long sleeve with tier
at lower part
Smocked cuff at wrist
Embroidered dot trim details
Maxi length (58" HPS)

Black

Eye Candy





**Lana
38NY2020**

Crepe de chine
(100% rayon)
Sheer crochet insert
at sleeve
Voluminous sleeve
with pleating at the
shoulder, smocked wrist
Hip length
with curved hem

**Black & White
Peach**



**Lana
38NY2020**

Crepe de chine
(100% rayon)
Sheer crochet insert
at sleeve
Voluminous sleeve
with pleating at the
shoulder, smocked wrist
Hip length
with curved hem

**Black & White
Peach**



Zélie
38NY3020

Wool Blend
Jacquard Sweater
(58% Acrylic/
30% Polyester/
10% wool/ 2% spandex)
Shawl collar, fringe at edges
Wrap body with belt
Low hip length
(28" HPS)

Blue
Grey
Ivory



Zélie
38NY3020

Wool Blend
Jacquard Sweater
(58% Acrylic/
30% Polyester/
10% wool/ 2% spandex)
Shawl collar, fringe at edges
Wrap body with belt
Low hip length
(28" HPS)

Blue
Grey
Ivory



Zélie
38NY3020

Wool Blend
Jacquard Sweater
(58% Acrylic/
30% Polyester/
10% wool/ 2% spandex)
Shawl collar, fringe at edges
Wrap body with belt
Low hip length
(28" HPS)

Blue
Grey
Ivory



Marie
38NY3040

Wool Blend
Jacquard Sweater
(58% Acrylic/
30% Polyester/
10% wool/ 2% spandex)
Shawl collar, fringe at edges
Wrap body with belt
Midi length (46" HPS)

Grey
Ivory

Marie
38NY3040

Wool Blend
Jacquard Sweater
(58% Acrylic/
30% Polyester/
10% wool/ 2% spandex)
Shawl collar, fringe at edges
Wrap body with belt
Midi length (46" HPS)

Grey
Ivory



Lila
38NY6020

Matte jersey
(96% polyester/
4% spandex)
Long sleeve
with smocked cuff
Slim fit through rib cage
Tiered swingy fit at skirt
Above the knee length
(35.5" HPS)

Black & White
Peach





Lila
38NY6020

Matte jersey
(96% polyester/
4% spandex)
Long sleeve
with smocked cuff
Slim fit through rib cage
Tiered swingy fit at skirt
Above the knee length
(35.5" HPS)

**Black & White
Peach**



Albane
38NY6040

Lurex jacquard chiffon
(100% polyester)
Jersey lining
(95% viscose/5% spandex)
Trim at shoulder & sleeve
Smocking at waist
Voluminous sleeve
Tier at lower skirt
Maxi length (58" HPS)

**Black & White
Peach**



Albane
38NY6040

Lurex jacquard chiffon
(100% polyester)
Jersey lining
(95% viscose/5% spandex)
Trim at shoulder & sleeve
Smocking at waist
Voluminous sleeve
Tier at lower skirt
Maxi length (58" HPS)

**Black & White
Peach**



Gilded Touch





Maëlys
38TJ2020

Foiled chiffon
(100% polyester)
Pintucking at
front & back body
Laceup at front
Long sleeve
with ruffles & elastic
at cuff
Low hip length
with curved hem

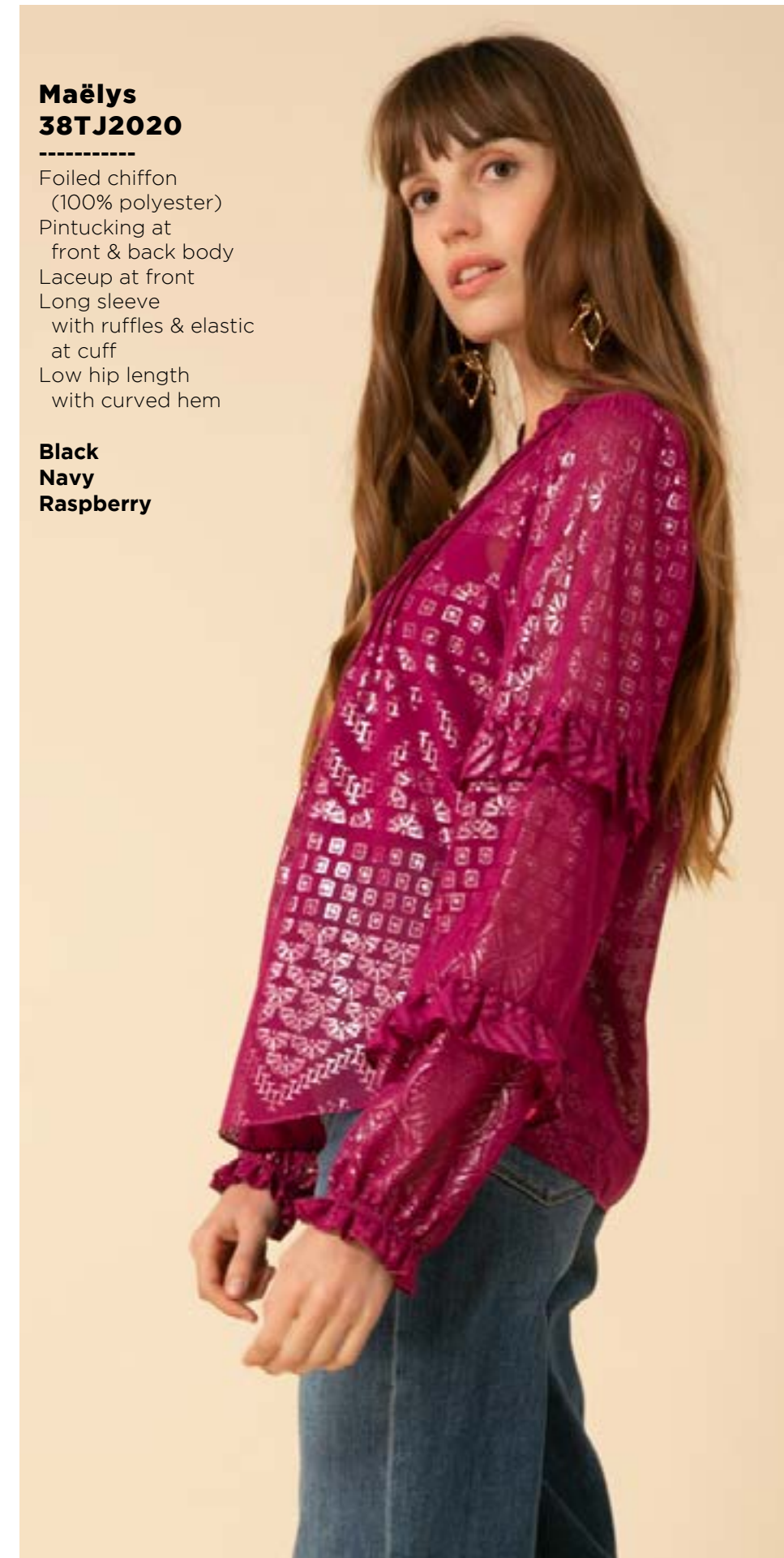
Black
Navy
Raspberry



Maëlys
38TJ2020

Foiled chiffon
(100% polyester)
Pintucking at
front & back body
Laceup at front
Long sleeve
with ruffles & elastic
at cuff
Low hip length
with curved hem

Black
Navy
Raspberry



Maëlys
38TJ2020

Foiled chiffon
(100% polyester)
Pintucking at
front & back body
Laceup at front
Long sleeve
with ruffles & elastic
at cuff
Low hip length
with curved hem

Black
Navy
Raspberry



Lania
36TE2040

Foiled chiffon
(100% polyester)
Elastic at neck
with tie at front
Flutter sleeves
Easy fit body
with curved hem

Black
Navy
Raspberry



Lania
36TE2040

Foiled chiffon
(100% polyester)
Elastic at neck
with tie at front
Flutter sleeves
Easy fit body
with curved hem

Black
Navy
Raspberry



Lania
36TE2040

Foiled chiffon
(100% polyester)
Elastic at neck
with tie at front
Flutter sleeves
Easy fit body
with curved hem

Black
Navy
Raspberry



Maria
38TJ3020

Wool Blend Jacquard Sweater
(58% Acrylic/ 30% Polyester/
10% wool/ 2%spandex)
Shawl collar, fringe at edges
Oversized poncho style
Buttons at front body
Mid-thigh length (32" HPS)

Black



Emmy
38TJ3030

Wool Blend Jacquard Sweater
(58% Acrylic/ 30% Polyester/
10% wool/ 2% spandex)
Shawl collar, fringe at edges
Wrap body with belt
Low hip length (28" HPS)

Black

Joy
38TJ6020

Foiled chiffon
(100% polyester)
Wrap front
with hook & eye
Elastic smocked waist
Flutter sleeve with ruffle
Tiered skirt with slit
at lower tiers
Midi length at front
with hi/low hem

Navy



Joy
38TJ602S

Charmeuse
(100% polyester)
Wrap front
with hook & eye
Elastic smocked waist
Flutter sleeve with ruffle
Tiered skirt with slit
at lower tiers
Midi length at front
with hi/low hem

Black
Green
Rose



Joy
38TJ602S

Charmeuse
(100% polyester)
Wrap front
with hook & eye
Elastic smocked waist
Flutter sleeve with ruffle
Tiered skirt with slit
at lower tiers
Midi length at front
with hi/low hem

Black
Green
Rose





Joy
38TJ602S

Charmeuse
(100% polyester)
Wrap front
with hook & eye
Elastic smocked waist
Flutter sleeve with ruffle
Tiered skirt with slit
at lower tiers
Midi length at front
with hi/low hem

Black
Green
Rose



Mathilde
38TJ6040

Foiled chiffon
(100% polyester)
Ruffle detailing
throughout body
Long sleeve
with smocked cuff
Smocked band under bust
Tiered voluminous skirt
Slit at side front leg
Maxi length (59" HPS)

Black
Navy



Mathilde
38TJ6040

Foiled chiffon
(100% polyester)
Ruffle detailing
throughout body
Long sleeve
with smocked cuff
Smocked band under bust
Tiered voluminous skirt
Slit at side front leg
Maxi length (59" HPS)

Black
Navy



**Mathilde
38TJ604S**

Charmeuse
(100% polyester)
Ruffle detailing
throughout body
Long sleeve
with smocked cuff
Smocked band under bust
Tiered voluminous skirt
Slit at side front leg
Maxi length (59" HPS)

**Black
Green**



**Mathilde
38TJ604S**

Charmeuse
(100% polyester)
Ruffle detailing
throughout body
Long sleeve
with smocked cuff
Smocked band under bust
Tiered voluminous skirt
Slit at side front leg
Maxi length (59" HPS)

**Black
Green**





Going Places

Alicia
38WP2020

Velvet burnout
(60% silk/40% viscose)
Set in lining at body
(100% viscose)
Smocking at neck
Buttons at front keyhole
Charmeuse piping details
Long sleeve with cuff
Low hip length
with curved hem

Blue
Pink



Alicia
38WP2020

Velvet burnout
(60% silk/40% viscose)
Set in lining at body
(100% viscose)
Smocking at neck
Buttons at front keyhole
Charmeuse piping details
Long sleeve with cuff
Low hip length
with curved hem

Blue
Pink





**Alicia
38WP202S**

Velvet burnout
(60% silk/40% viscose)
Set in lining at body
(100% viscose)
Smocking at neck
Buttons at front keyhole
Charmeuse piping details
Long sleeve with cuff
Low hip length
with curved hem

**Black
Magenta
Navy**



**Alicia
38WP202S**

Velvet burnout
(60% silk/40% viscose)
Set in lining at body
(100% viscose)
Smocking at neck
Buttons at front keyhole
Charmeuse piping details
Long sleeve with cuff
Low hip length
with curved hem

**Black
Magenta
Navy**



**Alicia
38WP202S**

Velvet burnout
(60% silk/40% viscose)
Set in lining at body
(100% viscose)
Smocking at neck
Buttons at front keyhole
Charmeuse piping details
Long sleeve with cuff
Low hip length
with curved hem

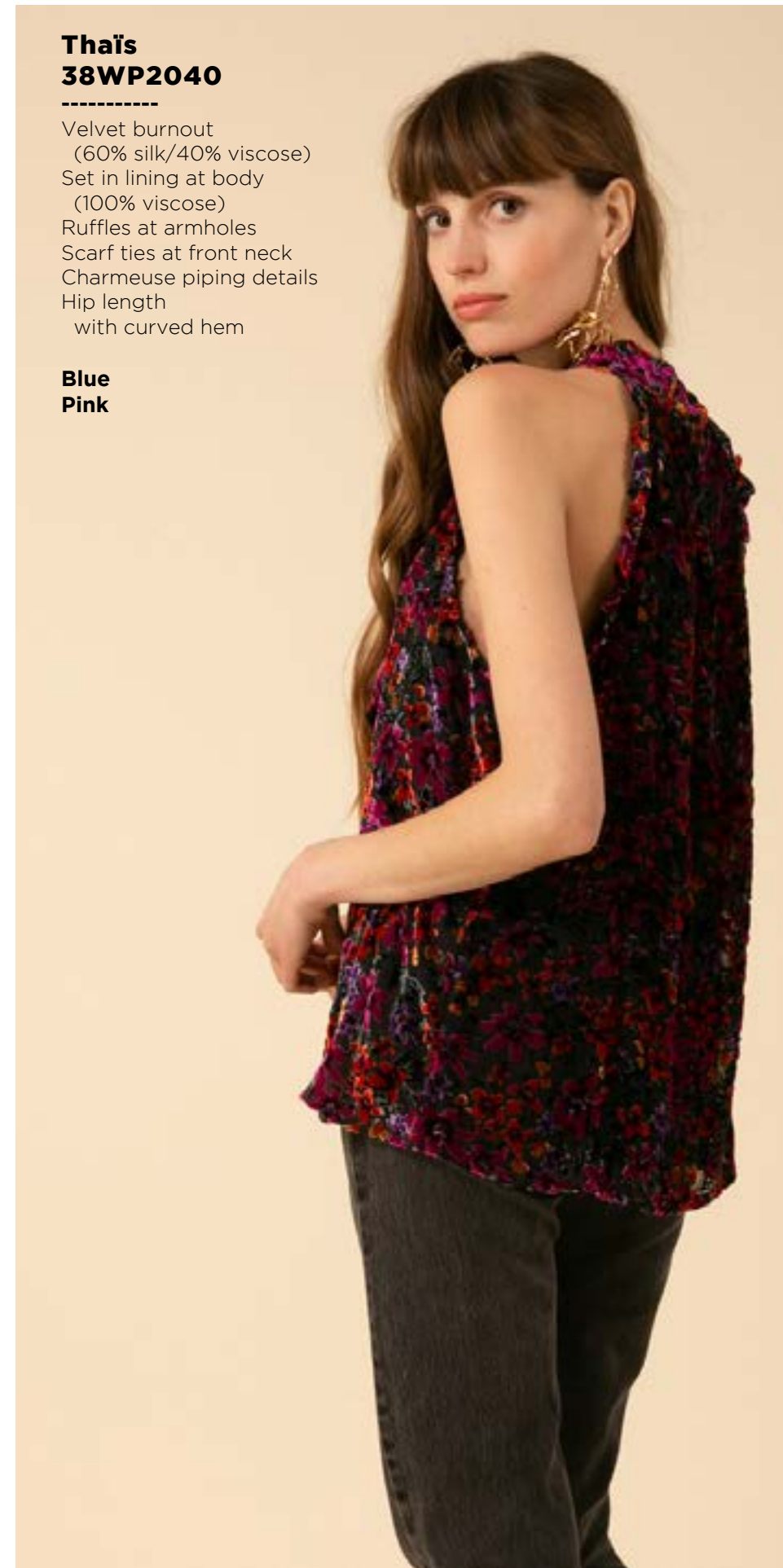
**Black
Magenta
Navy**



**Thaïs
38WP2040**

Velvet burnout
(60% silk/40% viscose)
Set in lining at body
(100% viscose)
Ruffles at armholes
Scarf ties at front neck
Charmeuse piping details
Hip length
with curved hem

**Blue
Pink**



**Thaïs
38WP2040**

Velvet burnout
(60% silk/40% viscose)
Set in lining at body
(100% viscose)
Ruffles at armholes
Scarf ties at front neck
Charmeuse piping details
Hip length
with curved hem

**Blue
Pink**



**Thaïs
38WP204S**

Velvet burnout
(60% silk/40% viscose)
Set in lining at body
(100% viscose)
Ruffles at armholes
Scarf ties at front neck
Charmeuse piping details
Hip length
with curved hem

**Black
Magenta
Navy**



Thaïs
38WP204S

Velvet burnout
(60% silk/40% viscose)
Set in lining at body
(100% viscose)
Ruffles at armholes
Scarf ties at front neck
Charmeuse piping details
Hip length
with curved hem

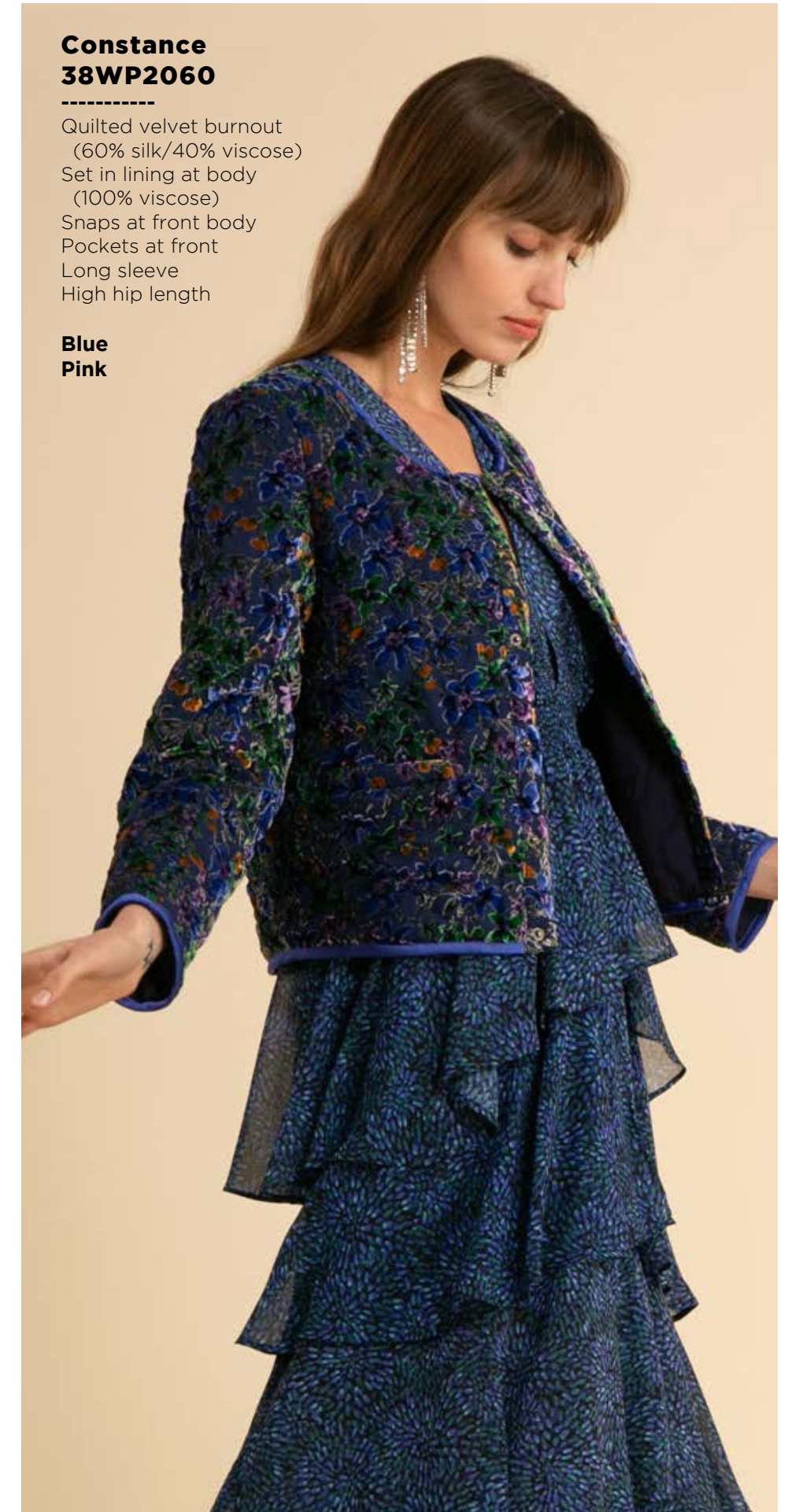
Black
Magenta
Navy



Thaïs
38WP204S

Velvet burnout
(60% silk/40% viscose)
Set in lining at body
(100% viscose)
Ruffles at armholes
Scarf ties at front neck
Charmeuse piping details
Hip length
with curved hem

Black
Magenta
Navy



Constance
38WP2060

Quilted velvet burnout
(60% silk/40% viscose)
Set in lining at body
(100% viscose)
Snaps at front body
Pockets at front
Long sleeve
High hip length

Blue
Pink

Constance
38WP2060

Quilted velvet burnout
(60% silk/40% viscose)
Set in lining at body
(100% viscose)
Snaps at front body
Pockets at front
Long sleeve
High hip length

Blue
Pink



Constance
38WP206S

Quilted velvet burnout
(60% silk/40% viscose)
Set in lining at body
(100% viscose)
Snaps at front body
Pockets at front
Long sleeve
High hip length

Black
Magenta
Navy



Constance
38WP206S

Quilted velvet burnout
(60% silk/40% viscose)
Set in lining at body
(100% viscose)
Snaps at front body
Pockets at front
Long sleeve
High hip length

Black
Magenta
Navy



Constance
38WP206S

Quilted velvet burnout
(60% silk/40% viscose)
Set in lining at body
(100% viscose)
Snaps at front body
Pockets at front
Long sleeve
High hip length

Black
Magenta
Navy



Salomé
38WP6020

Velvet burnout
(60% silk/40% viscose)
Set in lining at body
(100% viscose)
Slim fit body with tier at hem
7/8 length flared bell sleeve
with ruffle at edge
Charmeuse piping details
Above the knee length
(35.5" HPS)

Blue
Pink





Salomé
38WP6020

Velvet burnout
(60% silk/40% viscose)
Set in lining at body
(100% viscose)
Slim fit body with tier at hem
7/8 length flared bell sleeve
with ruffle at edge
Charmeuse piping details
Above the knee length
(35.5" HPS)

Blue
Pink

Salomé
38WP602S

Velvet burnout
(60% silk/40% viscose)
Set in lining at body
(100% viscose)
Slim fit body with tier at hem
7/8 length flared bell sleeve
with ruffle at edge
Charmeuse piping details
Above the knee length
(35.5" HPS)

Black
Magenta
Navy





Salomé
38WP602S

Velvet burnout
(60% silk/40% viscose)
Set in lining at body
(100% viscose)
Slim fit body with tier at hem
7/8 length flared bell sleeve
with ruffle at edge
Charmeuse piping details
Above the knee length
(35.5" HPS)

Black
Magenta
Navy



Salomé
38WP602S

Velvet burnout
(60% silk/40% viscose)
Set in lining at body
(100% viscose)
Slim fit body with tier at hem
7/8 length flared bell sleeve
with ruffle at edge
Charmeuse piping details
Above the knee length
(35.5" HPS)

Black
Magenta
Navy



Valentine
38WP6040

Velvet burnout
(60% silk/40% viscose)
Set in lining at body
(100% viscose)
Wrap front with
charmeuse piping
Short sleeve
Tiered voluminous skirt
with slit at lower tiers
Ankle length with hi/low
(49" HPS at front,
52" at back)

Blue
Pink

**Valentine
38WP6040**

Velvet burnout
(60% silk/40% viscose)
Set in lining at body
(100% viscose)
Wrap front with charmeuse
piping
Short sleeve
Tiered voluminous skirt
with slit at lower tiers
Ankle length with hi/low
(49" HPS at front,
52" at back)

**Blue
Pink**



**Valentine
38WP604S**

Velvet burnout
(60% silk/40% viscose)
Set in lining at body
(100% viscose)
Wrap front with
charmeuse piping
Short sleeve
Tiered voluminous skirt
with slit at lower tiers
Ankle length with hi/low
(49" HPS at front,
52" at back)

Black



**Héloïse
38WP6060**

Velvet burnout
(60% silk/40% viscose)
Set in lining at body
(100% viscose)
Slim fit through body
Flounce tier at skirt
Buttons at front body
Charmeuse piping details
Puff sleeve
with smocket cuff
Tie belt at waist
Maxi length (58" HPS)

**Blue
Pink**

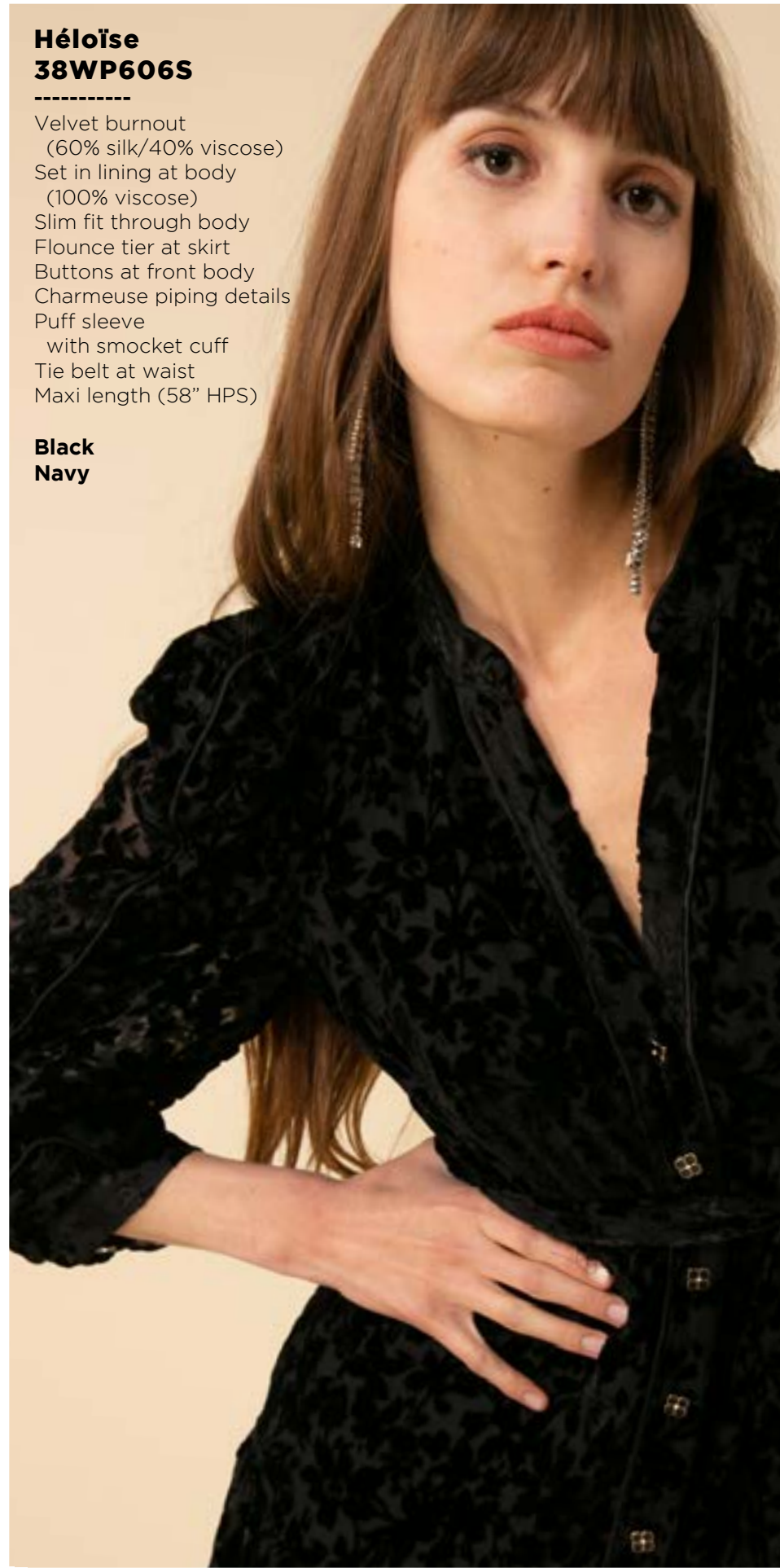




**Héloïse
38WP6060**

Velvet burnout
(60% silk/40% viscose)
Set in lining at body
(100% viscose)
Slim fit through body
Flounce tier at skirt
Buttons at front body
Charmeuse piping details
Puff sleeve
with smocket cuff
Tie belt at waist
Maxi length (58" HPS)

**Blue
Pink**



**Héloïse
38WP606S**

Velvet burnout
(60% silk/40% viscose)
Set in lining at body
(100% viscose)
Slim fit through body
Flounce tier at skirt
Buttons at front body
Charmeuse piping details
Puff sleeve
with smocket cuff
Tie belt at waist
Maxi length (58" HPS)

**Black
Navy**



**Héloïse
38WP606S**

Velvet burnout
(60% silk/40% viscose)
Set in lining at body
(100% viscose)
Slim fit through body
Flounce tier at skirt
Buttons at front body
Charmeuse piping details
Puff sleeve
with smocket cuff
Tie belt at waist
Maxi length (58" HPS)

**Black
Navy**



HALE BOB

LOS ANGELES

Season 9



Desert Stars





**Garance
39ED2020**

Velvet burnout
(60% silk/40% viscose)
Set in lining at body
(100% viscose)
Shirring at yoke &
center front
Long sleeve
with smocked cuff

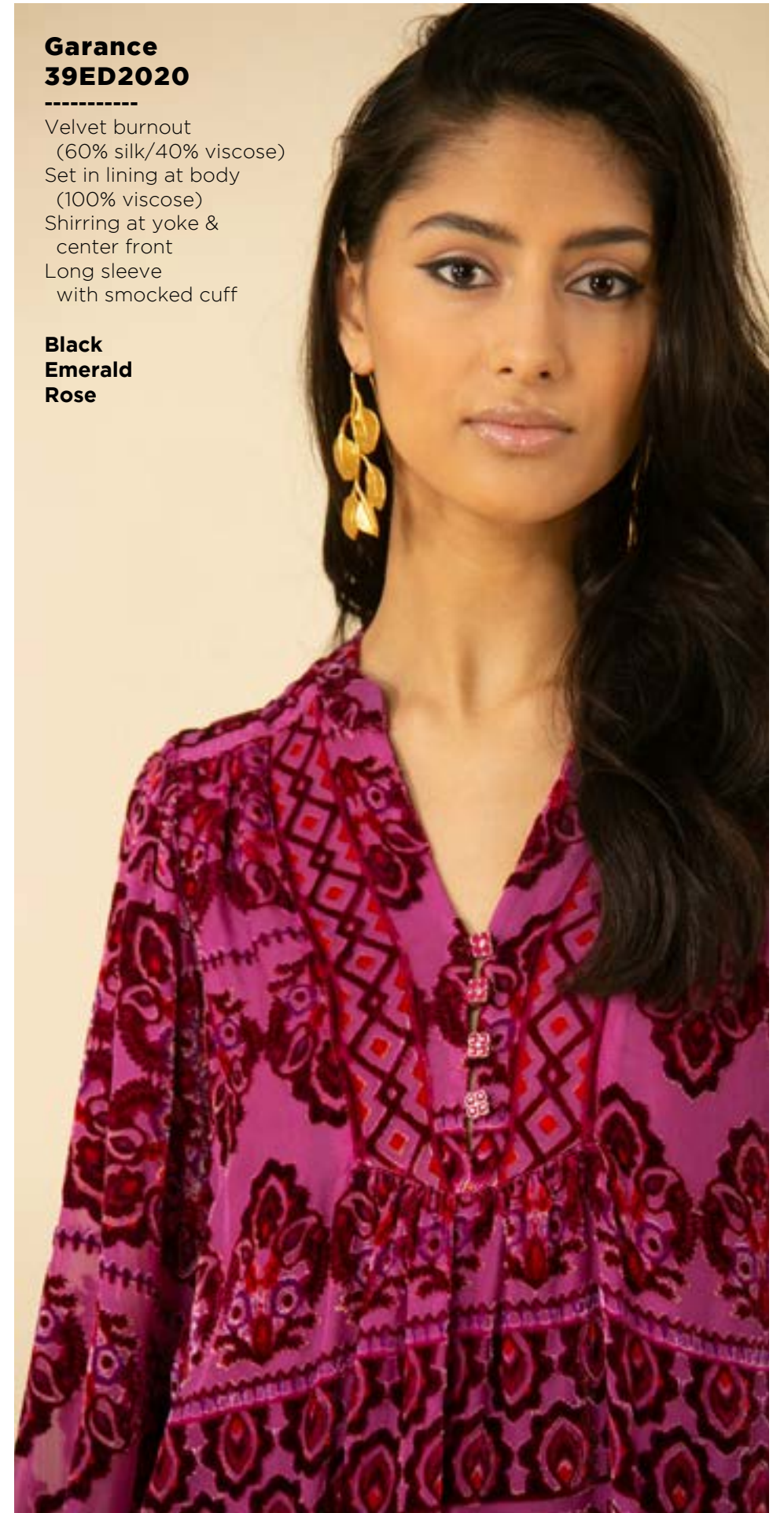
**Black
Emerald
Rose**



**Garance
39ED2020**

Velvet burnout
(60% silk/40% viscose)
Set in lining at body
(100% viscose)
Shirring at yoke &
center front
Long sleeve
with smocked cuff

**Black
Emerald
Rose**



**Garance
39ED2020**

Velvet burnout
(60% silk/40% viscose)
Set in lining at body
(100% viscose)
Shirring at yoke &
center front
Long sleeve
with smocked cuff

**Black
Emerald
Rose**

Nelya
39ED2040

Matte jersey
(96% polyester/
4% spandex)
Pleat at front under placket
Full length sleeve with
smocked cuff
Hip length

Black
Emerald



Nelya
39ED2040

Matte jersey
(96% polyester/
4% spandex)
Pleat at front under placket
Full length sleeve with
smocked cuff
Hip length

Black
Emerald



Harper
39ED6020

Matte jersey
(96% polyester/
4% spandex)
Slim fit through rib cage
Tiered swingy fit at skirt
Long sleeve
with smocked cuff
Above the knee length
(35.5" HPS)

Black
Emerald



**Harper
39ED6020**

Matte jersey
(96% polyester/
4% spandex)
Slim fit through rib cage
Tiered swingy fit at skirt
Long sleeve
with smocked cuff
Above the knee length
(35.5" HPS)

**Black
Emerald**



**Camila
39ED6030**

Velvet burnout
(60% silk/40% viscose)
Set in lining at body
(100% viscose)
Smocked waistband
Skirt with tier at hem
Pockets at hips
Long sleeve
with smocked cuff
Above the knee length
(35.5" HPS)

**Black
Emerald
Rose**



**Camila
39ED6030**

Velvet burnout
(60% silk/40% viscose)
Set in lining at body
(100% viscose)
Smocked waistband
Skirt with tier at hem
Pockets at hips
Long sleeve
with smocked cuff
Above the knee length
(35.5" HPS)

**Black
Emerald
Rose**



Camila
39ED6030

Velvet burnout
(60% silk/40% viscose)
Set in lining at body
(100% viscose)
Smocked waistband
Skirt with tier at hem
Pockets at hips
Long sleeve
with smocked cuff
Above the knee length
(35.5" HPS)

Black
Emerald
Rose



Gianna
39ED6040

Velvet burnout
(60% silk/40% viscose)
Set in lining at body
(100% viscose)
Slim fit through body
Voluminous tier at skirt
Buttons at front body
Puff sleeve
with elastic smocking
Tie belt at waist
Maxi length (58" HPS)

Black
Emerald



Gianna
39ED6040

Velvet burnout
(60% silk/40% viscose)
Set in lining at body
(100% viscose)
Slim fit through body
Voluminous tier at skirt
Buttons at front body
Puff sleeve
with elastic smocking
Tie belt at waist
Maxi length (58" HPS)

Black
Emerald





Elizabeth
39ED6050

Lightweight stretch velvet
(90% polyester/10% span)
Slim fit through rib cage
Tiered swingy fit at skirt
Long sleeve
with smocked cuff
Above the knee length
(35.5" HPS)

Black
Emerald
Navy
Wine



Elizabeth
39ED6050

Lightweight stretch velvet
(90% polyester/10% span)
Slim fit through rib cage
Tiered swingy fit at skirt
Long sleeve
with smocked cuff
Above the knee length
(35.5" HPS)

Black
Emerald
Navy
Wine





**Elizabeth
39ED6050**

Lightweight stretch velvet
(90% polyester/10% span)
Slim fit through rib cage
Tiered swingy fit at skirt
Long sleeve
with smocked cuff
Above the knee length
(35.5" HPS)

**Black
Emerald
Navy
Wine**



**Elizabeth
39ED6050**

Lightweight stretch velvet
(90% polyester/10% span)
Slim fit through rib cage
Tiered swingy fit at skirt
Long sleeve
with smocked cuff
Above the knee length
(35.5" HPS)

**Black
Emerald
Navy
Wine**



**Eleanor
39ED6060**

Lightweight stretch velvet
(90% polyester/10% span)
Hook & eye at front neck
Elastic smocked waist
Long sleeve
with smocked cuff
Tiered skirt
with slit at lower tiers
Ankle length at front
with hi/low hem
(49" at front, 52" at back)

**Black
Emerald
Navy
Wine**



**Eleanor
39ED6060**

Lightweight stretch velvet
(90% polyester/10% span)
Hook & eye at front neck
Elastic smocked waist
Long sleeve
with smocked cuff
Tiered skirt
with slit at lower tiers
Ankle length at front
with hi/low hem
(49" at front, 52" at back)

**Black
Emerald
Navy
Wine**



**Eleanor
39ED6060**

Lightweight stretch velvet
(90% polyester/10% span)
Hook & eye at front neck
Elastic smocked waist
Long sleeve
with smocked cuff
Tiered skirt
with slit at lower tiers
Ankle length at front
with hi/low hem
(49" at front, 52" at back)

**Black
Emerald
Navy
Wine**



**Eleanor
39ED6060**

Lightweight stretch velvet
(90% polyester/10% span)
Hook & eye at front neck
Elastic smocked waist
Long sleeve
with smocked cuff
Tiered skirt
with slit at lower tiers
Ankle length at front
with hi/low hem
(49" at front, 52" at back)

**Black
Emerald
Navy
Wine**





Life
in
Color

Abigail
39FC2020

Washed crepe de chine
(100% silk)
Voluminous long sleeve
with smocked cuff
Relaxed swingy fit
Hip length
with curved hem

Fuchsia
Taupe



Abigail
39FC2020

Washed crepe de chine
(100% silk)
Voluminous long sleeve
with smocked cuff
Relaxed swingy fit
Hip length
with curved hem

Fuchsia
Taupe



Avery
39FC4020

Lightweight faux leather
(100% Poly, fuzzy back
face of fabric)
Smocked waist
Tiered skirt
Pockets at hips
18.5" from waist to hem

Black
Ivory
Olive

NOTE: The samples are small.
A zipper will be added at the
waist for easy entry





**Avery
39FC4020**

Lightweight faux leather
(100% Poly, fuzzy back
face of fabric)
Smocked waist
Tiered skirt
Pockets at hips
18.5" from waist to hem

**Black
Ivory
Olive**

NOTE: The samples are small.
A zipper will be added at the
waist for easy entry



**Avery
39FC4020**

Lightweight faux leather
(100% Poly, fuzzy back
face of fabric)
Smocked waist
Tiered skirt
Pockets at hips
18.5" from waist to hem

**Black
Ivory
Olive**

NOTE: The samples are small.
A zipper will be added at the
waist for easy entry



**Avery
39FC402D**

Lightweight faux leather
(100% Poly, fuzzy back
face of fabric)
Smocked waist
Tiered skirt
Pockets at hips
30.5" from waist to hem

**Black
Ivory
Olive**

NOTE: The samples are small.
A zipper will be added at the
waist for easy entry

Avery
39FC402D

Lightweight faux leather
(100% Poly, fuzzy back
face of fabric)
Smocked waist
Tiered skirt
Pockets at hips
30.5" from waist to hem

Black
Ivory
Olive

NOTE: The samples are small.
A zipper will be added at the
waist for easy entry



Avery
39FC402D

Lightweight faux leather
(100% Poly, fuzzy back
face of fabric)
Smocked waist
Tiered skirt
Pockets at hips
30.5" from waist to hem

Black
Ivory
Olive

NOTE: The samples are small.
A zipper will be added at the
waist for easy entry



Emily
39FC6020

Lightweight faux leather
(100% Poly, fuzzy back
face of fabric)
Smocked waistband
Skirt with tier at hem
Pockets at hips
Long sleeve
with smocked cuff
Above the knee length
(35.5" HPS)

Black
Ivory
Olive





**Emily
39FC6020**

Lightweight faux leather
(100% Poly, fuzzy back
face of fabric)
Smocked waistband
Skirt with tier at hem
Pockets at hips
Long sleeve
with smocked cuff
Above the knee length
(35.5" HPS)

**Black
Ivory
Olive**



**Emily
39FC6020**

Lightweight faux leather
(100% Poly, fuzzy back
face of fabric)
Smocked waistband
Skirt with tier at hem
Pockets at hips
Long sleeve
with smocked cuff
Above the knee length
(35.5" HPS)

**Black
Ivory
Olive**



**Penelope
39FC6030**

Matte jersey
(96% polyester/
4% spandex)
Collar with mid length
placket at front,
with clover buttons
Pockets at hips
Long sleeve with wide cuff
Self covered belt included
Above the knee length
(35.5" HPS)
Deep hem included
to adjust length

**Fuchsia
Taupe**



**Penelope
39FC6030**

Matte jersey
(96% polyester/
4% spandex)
Collar with mid length
placket at front,
with clover buttons
Pockets at hips
Long sleeve with wide cuff
Self covered belt included
Above the knee length
(35.5" HPS)
Deep hem included
to adjust length

**Fuchsia
Taupe**

**Chloe
39FC6040**

Chiffon
(100% Polyester)
Smocking & ruffle at neck
Hook & eye hidden
at front neck
Elastic smocked waist
Elbow length bell sleeve
with ruffle
Tiered skirt
Midi length
with hi/low hem
(41" at front,
44" at back)

**Fuchsia
Taupe**



**Chloe
39FC6040**

Chiffon
(100% Polyester)
Smocking & ruffle at neck
Hook & eye hidden
at front neck
Elastic smocked waist
Elbow length bell sleeve
with ruffle
Tiered skirt
Midi length
with hi/low hem
(41" at front,
44" at back)

**Fuchsia
Taupe**

**Scarlett
39FC6050**

Poly Chiffon
with foiling Chiffon
(100% Polyester)
Ruffle detailing
throughout body
Elastic smocked waist
Tiered voluminous skirt
with side slit at leg
Long sleeve
with smocked cuff
Maxi length (58" HPS)

**Fuchsia
Taupe**





Scarlett
39FC6050

Poly Chiffon
with foiling Chiffon
(100% Polyester)
Ruffle detailing
throughout body
Elastic smocked waist
Tiered voluminous skirt
with side slit at leg
Long sleeve
with smocked cuff
Maxi length (58" HPS)

Fuchsia
Taupe





High Voltage



**Nora
39HG2020**

Lurex crinkle mesh
(100% polyester)
Set in lining
(100% viscose)
Buttons at front keyhole
Smocked detail at neck
with ruffle
Long full sleeve
with smocking & ruffle

**Black
Champagne**



**Nora
39HG2020**

Lurex crinkle mesh
(100% polyester)
Set in lining
(100% viscose)
Buttons at front keyhole
Smocked detail at neck
with ruffle
Long full sleeve
with smocking & ruffle

**Black
Champagne**



**Ellie
39HG6020**

Lurex crinkle mesh
(100% polyester)
Set in lining
(100% viscose)
Faux wrap at front body
Shirred upper skirt with
tiered lower ruffles
Long sleeve with
smocked cuff
Mini length (34" HPS)

Black

Leaves Fall



Nova
39LV2020

Velvet burnout
(60% silk/40% viscose)
Set in lining at body
(100% viscose)
Smocking at neck
Buttons at front keyhole
Long sleeve with cuff
Low hip length
with curved hem

Olive
Raspberry



Nova
39LV2020

Velvet burnout
(60% silk/40% viscose)
Set in lining at body
(100% viscose)
Smocking at neck
Buttons at front keyhole
Long sleeve with cuff
Low hip length
with curved hem

Olive
Raspberry



Nova
39LV202S

Velvet burnout
(60% silk/40% viscose)
Set in lining at body
(100% viscose)
Smocking at neck
Buttons at front keyhole
Long sleeve with cuff
Low hip length
with curved hem

Black
Forest Green
Rose





**Nova
39LV202S**

Velvet burnout
(60% silk/40% viscose)
Set in lining at body
(100% viscose)
Smocking at neck
Buttons at front keyhole
Long sleeve with cuff
Low hip length
with curved hem

**Black
Forest Green
Rose**



**Nova
39LV202S**

Velvet burnout
(60% silk/40% viscose)
Set in lining at body
(100% viscose)
Smocking at neck
Buttons at front keyhole
Long sleeve with cuff
Low hip length
with curved hem

**Black
Forest Green
Rose**



**Violet
39LV2040**

Velvet burnout
(60% silk/40% viscose)
Set in lining at body
(100% viscose)
Elastic & ruffle at neck
can be worn on or
off the shoulder
Ties at front neck
Long sleeve with ruffle
Hip length

**Olive
Raspberry**



**Violet
39LV2040**

Velvet burnout
(60% silk/40% viscose)
Set in lining at body
(100% viscose)
Elastic & ruffle at neck
can be worn on or
off the shoulder
Ties at front neck
Long sleeve with ruffle
Hip length

**Olive
Raspberry**



**Violet
39LV204S**

Velvet burnout
(60% silk/40% viscose)
Set in lining at body
(100% viscose)
Elastic & ruffle at neck
can be worn on or
off the shoulder
Ties at front neck
Long sleeve with ruffle
Hip length

**Black
Forest Green
Rose**



**Violet
39LV204S**

Velvet burnout
(60% silk/40% viscose)
Set in lining at body
(100% viscose)
Elastic & ruffle at neck
can be worn on or
off the shoulder
Ties at front neck
Long sleeve with ruffle
Hip length

**Black
Forest Green
Rose**



Violet
39LV204S

Velvet burnout
(60% silk/40% viscose)
Set in lining at body
(100% viscose)
Elastic & ruffle at neck
can be worn on or
off the shoulder
Ties at front neck
Long sleeve with ruffle
Hip length

Black
Forest Green
Rose



Riley
39LV3020

Wool Blend Jacquard Sweater
(58% Acrylic/ 30% Polyester/
10% wool/ 2% spandex)
Shawl collar, fringe at edges
Wrap body with belt
Low hip length (28" HPS)

Beige
Blue
Pink



Riley
39LV3020

Wool Blend Jacquard Sweater
(58% Acrylic/ 30% Polyester/
10% wool/ 2% spandex)
Shawl collar, fringe at edges
Wrap body with belt
Low hip length (28" HPS)

Beige
Blue
Pink



Riley
39LV3020

Wool Blend Jacquard Sweater
(58% Acrylic/ 30% Polyester/
10% wool/ 2% spandex)
Shawl collar, fringe at edges
Wrap body with belt
Low hip length (28" HPS)

Beige
Blue
Pink



Willow
39LV6020

Velvet burnout
(60% silk/40% viscose)
Set in lining at body
(100% viscose)
Smocked waistband
Skirt with tier at hem
Pockets at hips
Balloon sleeve elbow length
Above the knee length
(35.5" HPS)

Olive
Raspberry



Willow
39LV6020

Velvet burnout
(60% silk/40% viscose)
Set in lining at body
(100% viscose)
Smocked waistband
Skirt with tier at hem
Pockets at hips
Balloon sleeve elbow length
Above the knee length
(35.5" HPS)

Olive
Raspberry



**Willow
39LV602S**

Velvet burnout
(60% silk/40% viscose)
Set in lining at body
(100% viscose)
Smocked waistband
Skirt with tier at hem
Pockets at hips
Balloon sleeve elbow length
Above the knee length
(35.5" HPS)

**Black
Forest Green
Rose**



**Willow
39LV602S**

Velvet burnout
(60% silk/40% viscose)
Set in lining at body
(100% viscose)
Smocked waistband
Skirt with tier at hem
Pockets at hips
Balloon sleeve elbow length
Above the knee length
(35.5" HPS)

**Black
Forest Green
Rose**



**Willow
39LV602S**

Velvet burnout
(60% silk/40% viscose)
Set in lining at body
(100% viscose)
Smocked waistband
Skirt with tier at hem
Pockets at hips
Balloon sleeve elbow length
Above the knee length
(35.5" HPS)

**Black
Forest Green
Rose**



Stella
39LV6040

Velvet burnout
(60% silk/40% viscose)
Set in lining at body
(100% viscose)
Flounce ruffle at neck
7/8 length sleeve
with flounce
Flower enamel buttons
at front
Buttons function only
at top and bottom
of opening
Pockets at hips
Invisible zip at back
Maxi length (58" HPS)

Olive
Raspberry



Stella
39LV6040

Velvet burnout
(60% silk/40% viscose)
Set in lining at body
(100% viscose)
Flounce ruffle at neck
7/8 length sleeve
with flounce
Flower enamel buttons
at front
Buttons function only
at top and bottom
of opening
Pockets at hips
Invisible zip
at back
Maxi length
(58" HPS)

Olive
Raspberry

Treasure Trove



**Addison
39SR2020**

Twill
(55% viscose/45% rayon)
Buttons at front keyhole
Scarf tie at neck
Long sleeve
with smocked cuff
Swingy fit, hip length

**Raspberry
Teal**



**Addison
39SR2020**

Twill
(55% viscose/45% rayon)
Buttons at front keyhole
Scarf tie at neck
Long sleeve
with smocked cuff
Swingy fit, hip length

**Raspberry
Teal**



**Lucy
39SR2040**

Twill
(55% viscose/45% rayon)
Buttons at front placket
Slim easy fit
Full sleeve
with smocked cuff
Hip length

**Raspberry
Teal**





**Lucy
39SR2040**

Twill
(55% viscose/45% rayon)
Buttons at front placket
Slim easy fit
Full sleeve
with smocked cuff
Hip length

**Raspberry
Teal**



**Eliana
39SR3020**

Wool Blend Jacquard Sweater
(58% Acrylic/ 30% Polyester/
10% wool/ 2% spandex)
Shawl collar, fringe at edges
Wrap body with belt
Low hip length (28" HPS)

**Brown
Beige/Teal**



**Everly
39SR3040**

Wool Blend Jacquard Sweater
(58% Acrylic/ 30% Polyester/
10% wool/ 2% spandex)
Shawl collar, fringe at edges
Wrap body with belt
Midi length (46" HPS)

**Navy
Beige/Red**



Everly
39SR3040

Wool Blend Jacquard Sweater
(58% Acrylic/ 30% Polyester/
10% wool/ 2% spandex)
Shawl collar, fringe at edges
Wrap body with belt
Midi length (46" HPS)

Navy
Beige/Red



Ivy
39SR5020

Twill
(55% viscose/45% rayon)
Pockets at hips
Flat front waist
with elastic back
Slim fit leg
Tie at waist
Ankle length (29" inseam)

Raspberry
Teal



Ivy
39SR5020

Twill
(55% viscose/45% rayon)
Pockets at hips
Flat front waist
with elastic back
Slim fit leg
Tie at waist
Ankle length (29" inseam)

Raspberry
Teal

**Paisley
39SR6020**

Matte jersey
(96% polyester/4% spandex)
Mesh lining
(95% nylon/8% spandex)
Pleat at front under placket
Full length sleeve with cuff
Above the knee length
(35.5" HPS)
Deep hem added
to adjust length

39SR602B
(BEADED)

Hand beading
on neckline

**Raspberry
Teal**



**Paisley
39SR6020**

Matte jersey
(96% polyester/4% spandex)
Mesh lining
(95% nylon/8% spandex)
Pleat at front under placket
Full length sleeve with cuff
Above the knee length
(35.5" HPS)
Deep hem added
to adjust length

39SR602B
(BEADED)

Hand beading
on neckline

**Raspberry
Teal**



**Kinsley
39SR6040**

Crepe de chine
(100% viscose)
V-neck with shaped waist
3/4 length bell sleeve
Buttons function only
at bottom skirt opening
Pockets at hip
Invisible zip at back with
smocked panel for slim fit
Maxi length (58" HPS)

**Raspberry
Teal**





Delilah
39SR7020

Twill
(55% viscose/45% rayon)
Full lined
(100% viscose)
Pockets at front
Low hip length
with angled front opening

Raspberry
Teal



Delilah
39SR7020

Twill
(55% viscose/45% rayon)
Full lined
(100% viscose)
Pockets at front
Low hip length
with angled front opening

Raspberry
Teal



Trail
Blazer

Claire
39TZ2020

Embroidered crepe de chine
(100% viscose)
Long sleeve
with smocked cuff
Hip length
with curved hem

Black



Audrey
39TZ6020

Embroidered crepe de chine
(100% viscose)
Body is lined
(100% viscose)
Slim fit through rib cage
Tiered voluminous skirt
Long sleeve
with smocked cuff
Above the knee length
(35.5" HPS)

Black
Olive



Audrey
39TZ6020

Embroidered crepe de chine
(100% viscose)
Body is lined
(100% viscose)
Slim fit through rib cage
Tiered voluminous skirt
Long sleeve
with smocked cuff
Above the knee length
(35.5" HPS)

Black
Olive

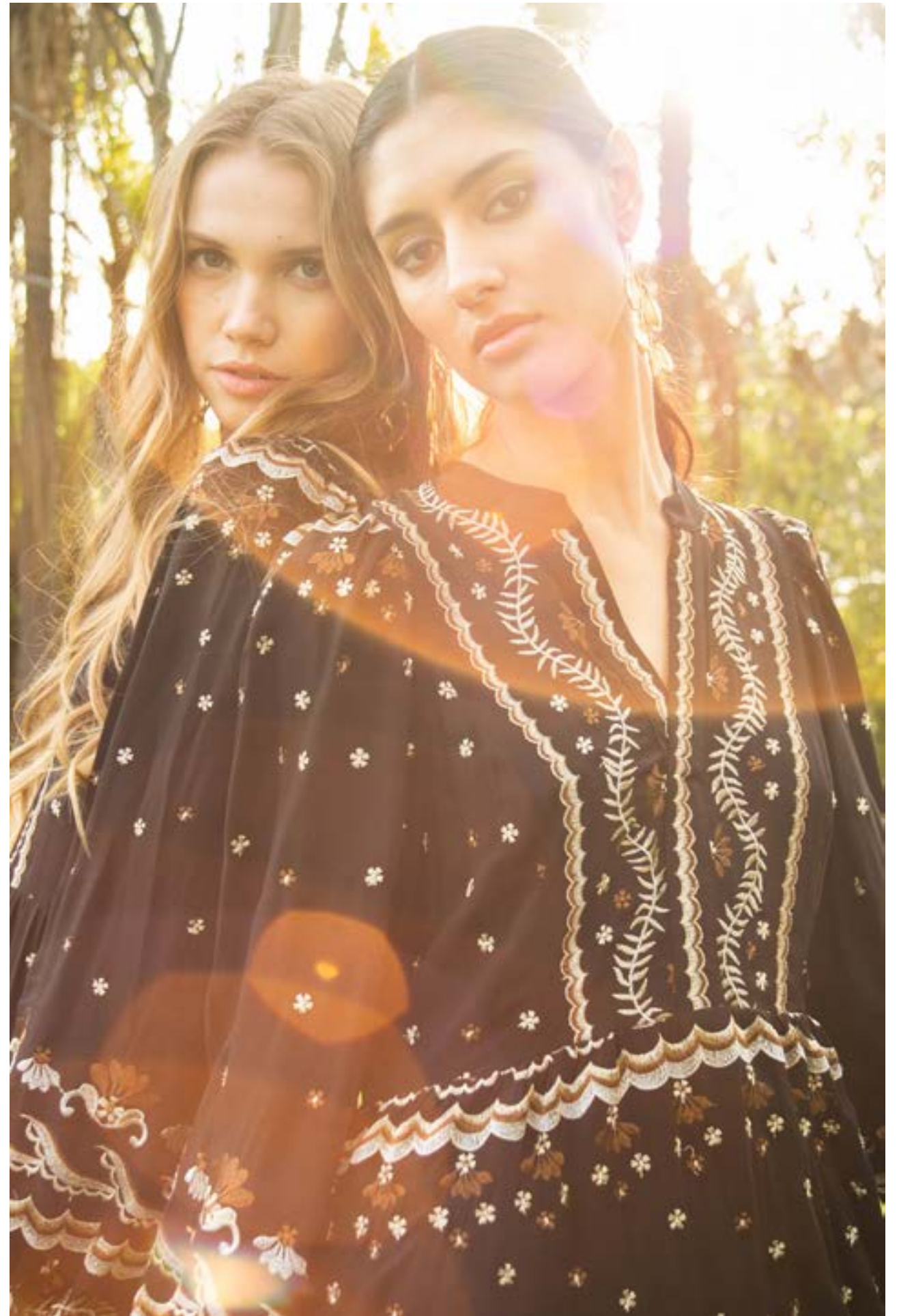


Audrey
39TZ602M

Embroidered crepe de chine
(100% viscose)
Body is lined
(100% viscose)
Slim fit through rib cage
Tiered voluminous skirt
Long sleeve
with smocked cuff
Maxi length
(58" HPS)

Black





A fashion advertisement featuring two women standing by a swimming pool. The woman on the left has dark hair and is wearing a dark, patterned long-sleeved top and a long, tiered white skirt. The woman on the right has long, wavy blonde hair and is wearing a matching dark, patterned long-sleeved dress. They are both wearing gold boots. The background shows a pool, palm trees, and a lounge chair. The text 'Coming up Roses' is overlaid in the upper right corner.

Coming
up
Roses



**Aaliyah
39UM2020**

Velvet burnout
(60% silk/40% viscose)
Set in lining at body
(100% viscose)
Shirring at front under yoke
Long sleeve, hip length

**Black
Teal**



**Aaliyah
39UM2020**

Velvet burnout
(60% silk/40% viscose)
Set in lining at body
(100% viscose)
Shirring at front under yoke
Long sleeve, hip length

**Black
Teal**



**Aaliyah
39UM202S**

Velvet burnout
(60% silk/40% viscose)
Set in lining at body
(100% viscose)
Shirring at front under yoke
Long sleeve, hip length

Black



Ruby
39UM6020

Velvet burnout
(60% silk/40% viscose)
Set in lining at body
(100% viscose)
Smocked waistband
Skirt with tier at hem
Pockets at hips
Elbow length balloon sleeve
Above the knee length
(35.5" HPS)

Black
Teal



Ruby
39UM6020

Velvet burnout
(60% silk/40% viscose)
Set in lining at body
(100% viscose)
Smocked waistband
Skirt with tier at hem
Pockets at hips
Elbow length balloon sleeve
Above the knee length
(35.5" HPS)

Black
Teal



Ruby
39UM602S

Velvet burnout
(60% silk/40% viscose)
Set in lining at body
(100% viscose)
Smocked waistband
Skirt with tier at hem
Pockets at hips
Elbow length balloon sleeve
Above the knee length
(35.5" HPS)

Black



**Brooklyn
39UM6040**

Velvet burnout
(60% silk/40% viscose)
Set in lining at body
(100% viscose)
Smocked waistband
Voluminous tiered skirt
Pockets at hips
Long sleeve
with smocked cuff
Maxi length
(58" HPS)

**Black
Teal**





**Brooklyn
39UM6040**

Velvet burnout
(60% silk/40% viscose)
Set in lining at body
(100% viscose)
Smocked waistband
Voluminous tiered skirt
Pockets at hips
Long sleeve
with smocked cuff
Maxi length
(58" HPS)

**Black
Teal**



**Brooklyn
39UM604S**

Velvet burnout
(60% silk/40% viscose)
Set in lining at body
(100% viscose)
Smocked waistband
Voluminous tiered skirt
Pockets at hips
Long sleeve
with smocked cuff
Maxi length
(58" HPS)

Black





Presley
39UM6060

Matte jersey
(96% polyester/
4% spandex)
Slim fit through rib cage
Easy swing fit through body
Pockets at hips
Long sleeve
with smocked cuff
Above the knee length
(35.5" HPS)

Black
Teal



Presley
39UM6060

Matte jersey
(96% polyester/
4% spandex)
Slim fit through rib cage
Easy swing fit through body
Pockets at hips
Long sleeve
with smocked cuff
Above the knee length
(35.5" HPS)

Black
Teal

This book is a presentation of a selection of Hale Bob product and is correct at time of publication.

To view the entire collection of products including updates and additions. You can view product line sheets at halebob.com by logging into the "Merchant" section of our website.

Prices and products posted in this book are current at time of publication but are subject to change.

Sales Director

East Coast
South East
Puerto Rico
Canada
Majors

Cathy Cooley

310-963-2463
cathy@halebob.com

Sales Executive

Mexico
Central America
South America

Maria Garcia

323-394-1739
mariag@halebob.com

Sales Executive

West Coast

For Marketing & Press Inquiries:

Marianna Gunther
marianna@halebob.com

HALE BOB
LOS ANGELES

