



HALE BOB

LOS ANGELES

Fall 1 2023



HALE BOB

LOS ANGELES

Season 5

Stargazer





**Janessa
35AZ2020**

Washed crepe de chine
(100% silk)
3/4 bell sleeve
Pleat at front neck
under placket
Hip length with
curved hem

**Ivory
Navy
Pink**



**Janessa
35AZ2020**

Washed crepe de chine
(100% silk)
3/4 bell sleeve
Pleat at front neck
under placket
Hip length with
curved hem

**Ivory
Navy
Pink**



**Janessa
35AZ2020**

Washed crepe de chine
(100% silk)
3/4 bell sleeve
Pleat at front neck
under placket
Hip length with
curved hem

**Ivory
Navy
Pink**



**Zyana
35AZ2040**

Jersey
(95% viscose/5% spandex)
Fold-over wrap top
with snap for closure
Long sleeve
with smocked cuff

**Ivory
Navy
Pink**



**Zyana
35AZ2040**

Jersey
(95% viscose/5% spandex)
Fold-over wrap top
with snap for closure
Long sleeve
with smocked cuff

**Ivory
Navy
Pink**



**Zyana
35AZ2040**

Jersey
(95% viscose/5% spandex)
Fold-over wrap top
with snap for closure
Long sleeve
with smocked cuff

**Ivory
Navy
Pink**

Zyana
35AZ204S

Jersey
(95% viscose/5% spandex)
Fold-over wrap top
with snap for closure
Long sleeve
with smocked cuff

Black



Madaline
35AZ2060

Woven crepe
(55% viscose/45% rayon)
Placket at front
Long voluminous sleeve
with smocked cuff
Low hip length with
curved hem

Ivory
Navy
Pink



Madaline
35AZ2060

Woven crepe
(55% viscose/45% rayon)
Placket at front
Long voluminous sleeve
with smocked cuff
Low hip length with
curved hem

Ivory
Navy
Pink





Madaline
35AZ2060

Woven crepe
(55% viscose/45% rayon)
Placket at front
Long voluminous sleeve
with smocked cuff
Low hip length with
curved hem

Ivory
Navy
Pink



Veronika
35AZ6020

Woven crepe
(55% viscose/45% rayon)
Wrap dress ties
at the side waist
Voluminous sleeve
with smocked cuff
Swingy skirt
Mid- thigh length
(34.5" HPS)

Ivory
Navy
Pink



Veronika
35AZ6020

Woven crepe
(55% viscose/45% rayon)
Wrap dress ties
at the side waist
Voluminous sleeve
with smocked cuff
Swingy skirt
Mid- thigh length
(34.5" HPS)

Ivory
Navy
Pink

Veronika
35AZ6020

Woven crepe
(55% viscose/45% rayon)
Wrap dress ties
at the side waist
Voluminous sleeve
with smocked cuff
Swingy skirt
Mid- thigh length
(34.5" HPS)

Ivory
Navy
Pink



Belina
35AZ6040

Matte jersey
(96% polyester/
4% spandex)
Buttons at front
placket
Pockets at hips
Belt with metal
D-ring buckle
3/4 length sleeve
with smocked cuff
Midi length (44" HPS)

Ivory
Navy
Pink



Belina
35AZ6040

Matte jersey
(96% polyester/
4% spandex)
Buttons at front
placket
Pockets at hips
Belt with metal
D-ring buckle
3/4 length sleeve
with smocked cuff
Midi length (44" HPS)

Ivory
Navy
Pink



Belina
35AZ6040

Matte jersey
(96% polyester/
4% spandex)
Buttons at front
placket
Pockets at hips
Belt with metal
D-ring buckle
3/4 length sleeve
with smocked cuff
Midi length (44" HPS)

Ivory
Navy
Pink



Nadja
35AZ6060

Woven crepe
(55% viscose/45% rayon)
Smocked band at
neck & waist
Flutter sleeve ends
above elbow
Pockets at hips
Maxi length (58" HPS)

Ivory
Navy
Pink



Nadja
35AZ6060

Woven crepe
(55% viscose/45% rayon)
Smocked band at
neck & waist
Flutter sleeve ends
above elbow
Pockets at hips
Maxi length (58" HPS)

Ivory
Navy
Pink



Nadja
35AZ6060

Woven crepe
(55% viscose/45% rayon)
Smocked band at
neck & waist
Flutter sleeve ends
above elbow
Pockets at hips
Maxi length (58" HPS)

Ivory
Navy
Pink



Noemie
35AZ9810

Silk Habotai
36" square

Ivory
Navy





Bright & Bunch





Liza
35BR2020

Viscose Charmeuse
(54% rayon/46% viscose)
Voluminous sleeve with
pleating at shoulder
Elastic at wrist.
Low hip length
with curved hem

Blue
Pink



Liza
35BR2020

Viscose Charmeuse
(54% rayon/46% viscose)
Voluminous sleeve with
pleating at shoulder
Elastic at wrist.
Low hip length
with curved hem

Blue
Pink



Liza
35BR202S

Viscose Charmeuse
(54% rayon/46% viscose)
Voluminous sleeve with
pleating at shoulder
Elastic at wrist.
Low hip length
with curved hem

Black



**Liza
35BR202S**

Viscose Charmeuse
(54% rayon/46% viscose)
Voluminous sleeve with
pleating at shoulder
Elastic at wrist.
Low hip length
with curved hem

**Blue
Pink**



**Antonia
35BR2040**

Jersey
(95% viscose/ 5% spandex)
Drop shoulder
Tie at front waist
Hip length
Easy, relaxed fit

**Blue
Pink**



**Antonia
35BR2040**

Jersey
(95% viscose/ 5% spandex)
Drop shoulder
Tie at front waist
Hip length
Easy, relaxed fit

**Blue
Pink**



Kaja
35BR6020

Poplin
(100% Cotton)
Eyelet trim detailing
Buttons at front placket
Tie at waist
Above the knee length
(35.5" HPS)

Blue
Pink



Kaja
35BR6020

Poplin
(100% Cotton)
Eyelet trim detailing
Buttons at front placket
Tie at waist
Above the knee length
(35.5" HPS)

Blue
Pink



Kaja
35BR602S

Poplin
(100% Cotton)
Eyelet trim detailing
Buttons at front placket
Tie at waist
Above the knee length
(35.5" HPS)

Navy
Raspberry



Kaja
35BR602S

Poplin
(100% Cotton)
Eyelet trim detailing
Buttons at front placket
Tie at waist
Above the knee length
(35.5" HPS)

Navy
Raspberry

**Klaudia
35BR6040**

Matte jersey
(96% polyester/
4% spandex)
Mesh lining
(92% nylon/ 8% spandex)
3/4 length balloon sleeve
with cuff
Slim fit through waist
A-line skirt with pleat
at waist
Below the knee length
(40"HPS)

**Blue
Pink**



**Klaudia
35BR6040**

Matte jersey
(96% polyester/
4% spandex)
Mesh lining
(92% nylon/ 8% spandex)
3/4 length balloon sleeve
with cuff
Slim fit through waist
A-line skirt with pleat
at waist
Below the knee length
(40"HPS)

**Blue
Pink**



**Zuzanna
35BR6060**

Washed challis
(100% viscose)
Buttons at front placket
Flutter sleeve with trim
Pintuck pleats at
front & back
Pockets at front hips
Above the knee length
(35.5" HPS)

**Blue
Pink**





**Zuzanna
35BR6060**

Washed challis
(100% viscose)
Buttons at front placket
Flutter sleeve with trim
Pintuck pleats at
front & back
Pockets at front hips
Above the knee length
(35.5" HPS)

**Blue
Pink**



**Zuzanna
35BR606M**

Washed challis
(100% viscose)
Buttons at front placket
Flutter sleeve with trim
Pintuck pleats at
front & back
Pockets at front hips
Maxi length (58" HPS)

**Blue
Pink**



**Zuzanna
35BR606M**

Washed challis
(100% viscose)
Buttons at front placket
Flutter sleeve with trim
Pintuck pleats at
front & back
Pockets at front hips
Maxi length (58" HPS)

**Blue
Pink**



Wild and Free



**Evian
35EF2020**

Embroidered swiss dot
(100% Cotton)
Challis lining
(100% viscose)
Ruffles at neck &
armholes
Hip length
with curved hem

**Black
Olive
Red**



**Evian
35EF2020**

Embroidered swiss dot
(100% Cotton)
Challis lining
(100% viscose)
Ruffles at neck &
armholes
Hip length
with curved hem

**Black
Olive
Red**

**Evian
35EF2020**

Embroidered swiss dot
(100% Cotton)
Challis lining
(100% viscose)
Ruffles at neck &
armholes
Hip length
with curved hem

**Black
Olive
Red**





**Dyana
35EF2040**

Embroidered swiss dot
(100% Cotton)
Challis lining
(100% viscose)
Smocking around
neckline, buttons at
front keyhole
Ruffle detailing at
armhole & sleeve
Low hip length with
curved hem

**Black
Olive
Red**



**Dyana
35EF2040**

Embroidered swiss dot
(100% Cotton)
Challis lining
(100% viscose)
Smocking around
neckline, buttons at
front keyhole
Ruffle detailing at
armhole & sleeve
Low hip length with
curved hem

**Black
Olive
Red**



**Dyana
35EF2040**

Embroidered swiss dot
(100% Cotton)
Challis lining
(100% viscose)
Smocking around
neckline, buttons at
front keyhole
Ruffle detailing at
armhole & sleeve
Low hip length with
curved hem

**Black
Olive
Red**

Lilly
35EF6020

Embroidered swiss dot
(100% Cotton)
Challis lining
(100% viscose)
Elastic under bust
around waist
Ties at waist
Long voluminous sleeve
with pleating & elastic
at wrist
Pockets at hips
Maxi length (58" HPS)

Black
Olive
Red



Lilly
35EF6020

Embroidered swiss dot
(100% Cotton)
Challis lining
(100% viscose)
Elastic under bust
around waist
Ties at waist
Long voluminous sleeve
with pleating & elastic
at wrist
Pockets at hips
Maxi length (58" HPS)

Black
Olive
Red



Lilly
35EF6020

Embroidered swiss dot
(100% Cotton)
Challis lining
(100% viscose)
Elastic under bust
around waist
Ties at waist
Long voluminous sleeve
with pleating & elastic
at wrist
Pockets at hips
Maxi length (58" HPS)

Black
Olive
Red





**Tasha
35EF6040**

Embroidered swiss dot
(100% Cotton)
Challis lining
(100% viscose)
7/8 length sleeve with tier
Slim fit though rib cage
Volumunious tiers at skirt
Above the knee length
(35.5" HPS)

**Black
Olive
Red**



**Tasha
35EF6040**

Embroidered swiss dot
(100% Cotton)
Challis lining
(100% viscose)
7/8 length sleeve with tier
Slim fit though rib cage
Volumunious tiers at skirt
Above the knee length
(35.5" HPS)

**Black
Olive
Red**



**Tasha
35EF6040**

Embroidered swiss dot
(100% Cotton)
Challis lining
(100% viscose)
7/8 length sleeve with tier
Slim fit though rib cage
Volumunious tiers at skirt
Above the knee length
(35.5" HPS)

**Black
Olive
Red**

Tasha
35EF604D

Embroidered swiss dot
(100% Cotton)
Challis lining
(100% viscose)
7/8 length sleeve with tier
Slim fit though rib cage
Volumunious tiers at skirt
Midi length (46" HPS)

Black
Olive
Red



Tasha
35EF604D

Embroidered swiss dot
(100% Cotton)
Challis lining
(100% viscose)
7/8 length sleeve with tier
Slim fit though rib cage
Volumunious tiers at skirt
Midi length (46" HPS)

Black
Olive
Red



Tasha
35EF604D

Embroidered swiss dot
(100% Cotton)
Challis lining
(100% viscose)
7/8 length sleeve with tier
Slim fit though rib cage
Volumunious tiers at skirt
Midi length (46" HPS)

Black
Olive
Red



A woman with long, wavy brown hair stands in a rustic wooden cabin. She is wearing a long-sleeved, tiered blue dress with a white and yellow geometric pattern, and yellow boots. The cabin has dark wood walls and a curved orange velvet sofa with several patterned pillows. A chicken head is mounted on the wall to the left, and a small wooden shelf with a white bird figurine is on the right. The floor is made of dark wood planks. The text "Precious Medals" is overlaid at the bottom in a white serif font.

Precious Medals

Tamie
35MD2020

Matte jersey
(96% polyester/
4% spandex)
Dropped shoulder
sleeve
Collar at neck, pleat at
bottom of keyhole
Slim, easy fit
Hip length with
curved hem

Blue
Pink



Tamie
35MD2020

Matte jersey
(96% polyester/
4% spandex)
Dropped shoulder
sleeve
Collar at neck, pleat at
bottom of keyhole
Slim, easy fit
Hip length with
curved hem

Blue
Pink



Jaya
35MD2040

Twill
(55% viscose/45% rayon)
Buttons at front body
Voluminous sleeve
with cuff
Low hip length with
curved hem

Blue
Pink

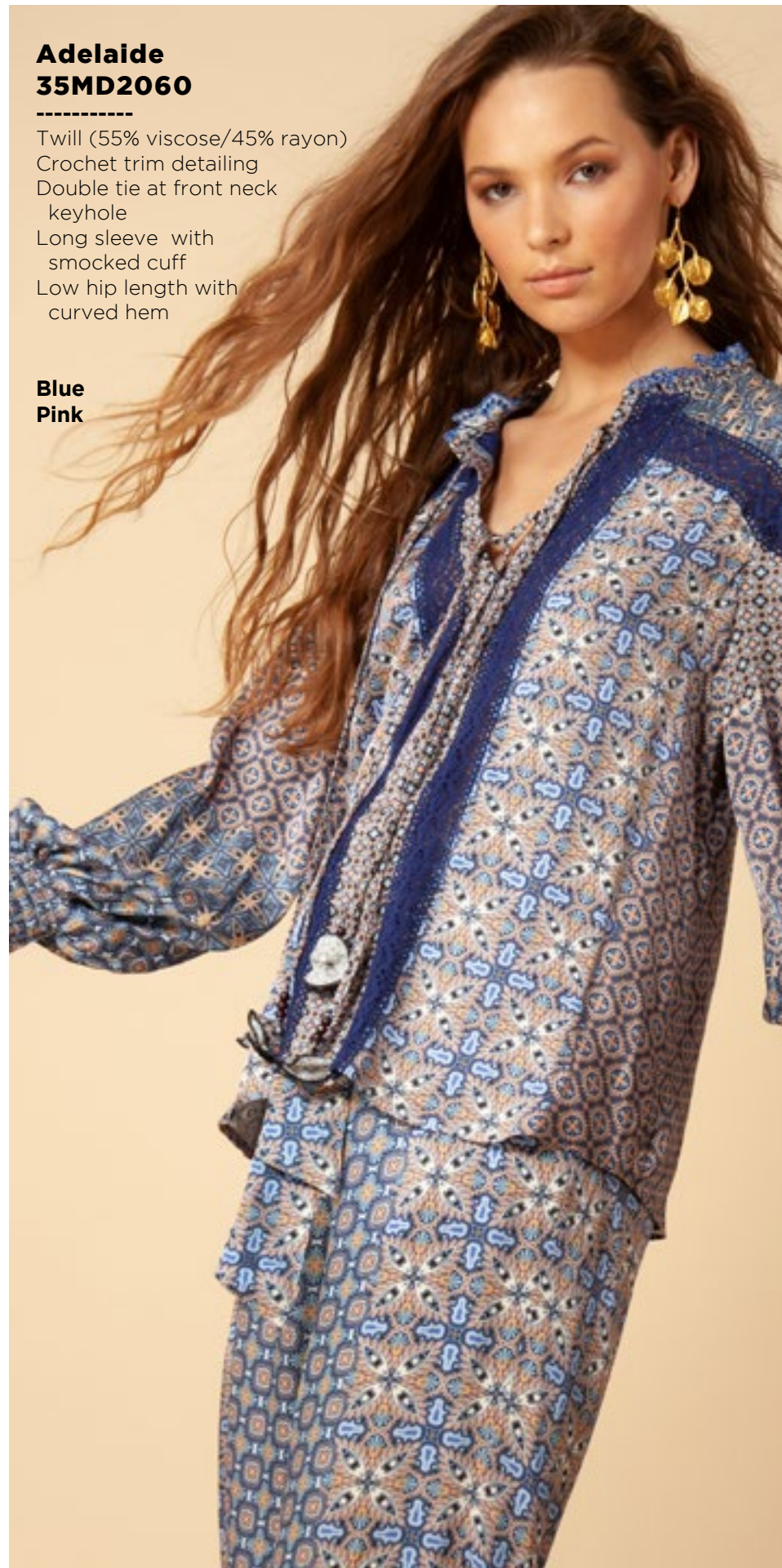




Jaya
35MD2040

Twill
(55% viscose/45% rayon)
Buttons at front body
Voluminous sleeve
with cuff
Low hip length with
curved hem

Blue
Pink



Adelaide
35MD2060

Twill (55% viscose/45% rayon)
Crochet trim detailing
Double tie at front neck
keyhole
Long sleeve with
smocked cuff
Low hip length with
curved hem

Blue
Pink



Adelaide
35MD2060

Twill (55% viscose/45% rayon)
Crochet trim detailing
Double tie at front neck
keyhole
Long sleeve with
smocked cuff
Low hip length with
curved hem

Blue
Pink



**Lillie
35MD5020**

Twill
(55% viscose/45% rayon)
Slim/straight leg
with pintuck at front leg
Flat front waistband,
smocked at back for
pull-on fit
Tie belt at waist
Ankle length
(29" Inseam)

**Blue
Pink**



**Lillie
35MD5020**

Twill
(55% viscose/45% rayon)
Slim/straight leg
with pintuck at front leg
Flat front waistband,
smocked at back for
pull-on fit
Tie belt at waist
Ankle length
(29" Inseam)

**Blue
Pink**



**Emalee
35MD6020**

Twill
(55% viscose/45% rayon)
Enamel buttons at
front keyhole
Shirred panels at
front skirt
Pockets at hips
Long full sleeve with
smocked cuff
Above the knee length
(35.5" HPS)

**Blue
Pink**



Emalee
35MD6020

Twill
(55% viscose/45% rayon)
Enamel buttons at
front keyhole
Shirred panels at
front skirt
Pockets at hips
Long full sleeve with
smocked cuff
Above the knee length
(35.5" HPS)

Blue
Pink





Ledi
35MD6040

Twill
(55% viscose/
45% rayon)
Buttons at front body
Long full sleeve with
smocked cuff
Tiered voluminous
body
Midi length
(47" HPS)

Blue
Pink



Ledi
35MD6040

Twill
(55% viscose/
45% rayon)
Buttons at front body
Long full sleeve with
smocked cuff
Tiered voluminous
body
Midi length
(47" HPS)

Blue
Pink



**Ariyanna
35MD6060**

Matte jersey
(96% polyester/
4% spandex)
Mesh lining
(92% nylon/ 8% spandex)
Pockets at hips
Voluminous 3/4 sleeve
with cuff
Deep hem added
for length
Above the knee length:
35.5" HPS

**Blue
Pink**



**Ariyanna
35MD6060**

Matte jersey
(96% polyester/
4% spandex)
Mesh lining
(92% nylon/ 8% spandex)
Pockets at hips
Voluminous 3/4 sleeve
with cuff
Deep hem added
for length
Above the knee length:
35.5" HPS

**Blue
Pink**



**Ariyanna
35MD606D**

Matte jersey
(96% polyester/
4% spandex)
Mesh lining
(92% nylon/ 8% spandex)
Pockets at hips
Voluminous 3/4 sleeve
with cuff
Deep hem added
for length
Midi length: 41"

**Blue
Pink**



**Ariyanna
35MD606D**

Matte jersey
(96% polyester/
4% spandex)
Mesh lining
(92% nylon/ 8% spandex)
Pockets at hips
Voluminous 3/4 sleeve
with cuff
Deep hem added
for length
Midi length: 41"

**Blue
Pink**





Wing and Petal

Hailey
35PT2020

Washed chiffon
(70% rayon/30% silk)
Jersey lining
(95% viscose/
5% spandex)
Voluminous balloon
sleeve with smocked cuff
Smocking at opening
Hip length with
curved hem

Black
Green



Hailey
35PT2020

Washed chiffon
(70% rayon/30% silk)
Jersey lining
(95% viscose/
5% spandex)
Voluminous balloon
sleeve with smocked cuff
Smocking at opening
Hip length with
curved hem

Black
Green



Lorra
35PT2040

Washed Charmeuse
(25% silk/75% viscose)
Elastic at top can be
worn on or off shoulder
Tie at front neck
with keyhole
3/4 bell sleeve
Low hip length
with curved hem

Black
Green



Lorra
35PT2040

Washed Charmeuse
(25% silk/75% viscose)
Elastic at top can be
worn on or off shoulder
Tie at front neck
with keyhole
3/4 bell sleeve
Low hip length
with curved hem

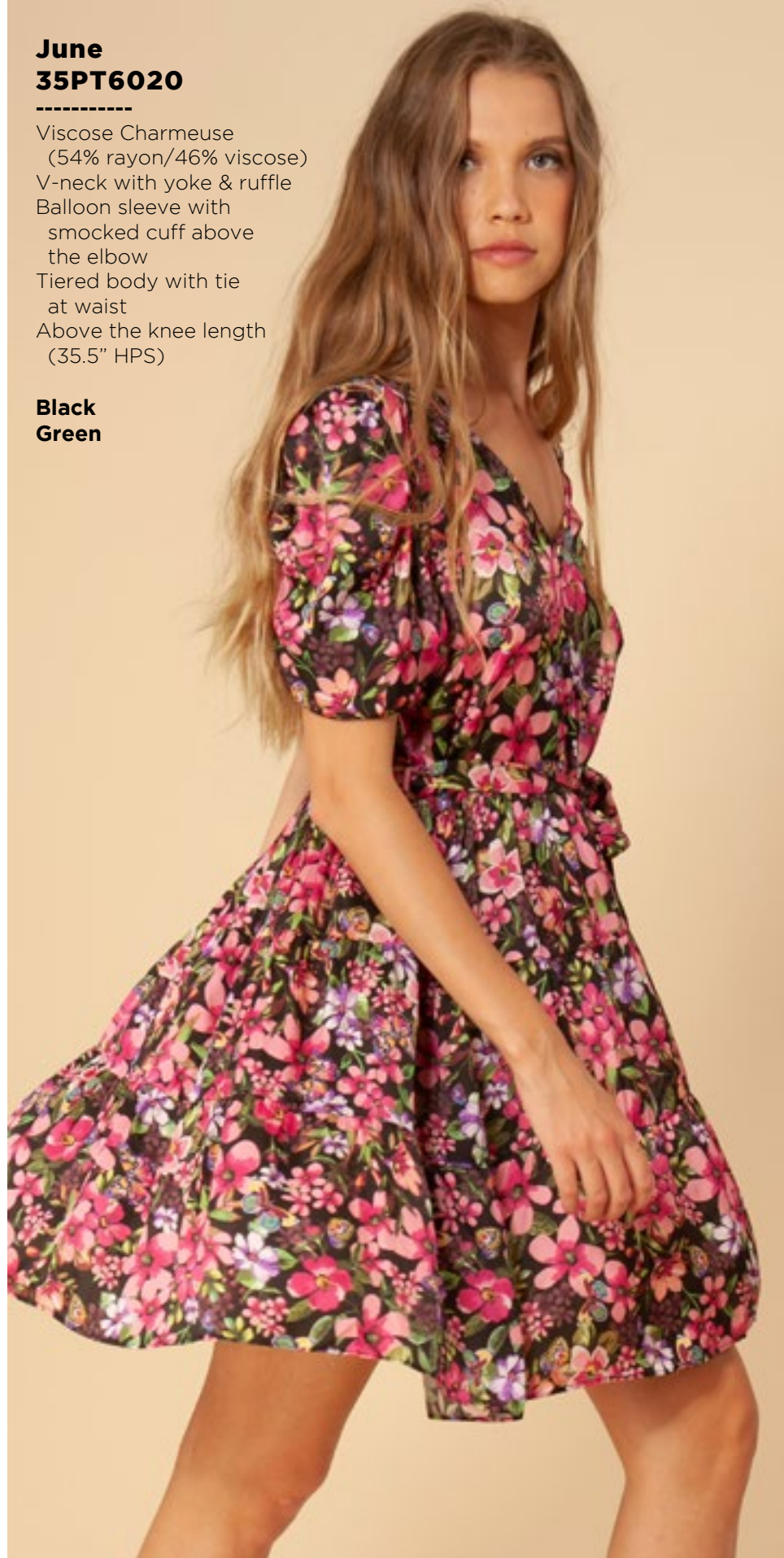
Black
Green



**June
35PT6020**

Viscose Charmeuse
(54% rayon/46% viscose)
V-neck with yoke & ruffle
Balloon sleeve with
smocked cuff above
the elbow
Tiered body with tie
at waist
Above the knee length
(35.5" HPS)

**Black
Green**



**June
35PT6020**

Viscose Charmeuse
(54% rayon/46% viscose)
V-neck with yoke & ruffle
Balloon sleeve with
smocked cuff above
the elbow
Tiered body with tie
at waist
Above the knee length
(35.5" HPS)

**Black
Green**



**June
35PT602S**

Viscose Charmeuse
(54% rayon/46% viscose)
V-neck with yoke & ruffle
Balloon sleeve with
smocked cuff above
the elbow
Tiered body with tie
at waist
Above the knee length
(35.5" HPS)

**Black
Raspberry**





June
35PT602S

Viscose Charmeuse
(54% rayon/46% viscose)
V-neck with yoke & ruffle
Balloon sleeve with
smocked cuff above
the elbow
Tiered body with tie
at waist
Above the knee length
(35.5" HPS)

Black
Raspberry



Alessia
35PT6040

Jersey
(95% viscose/5% spandex)
Shirring at center front
body & back body
Dropped shoulder
Slim fit at body
with flounce hem
Knee length (37" HPS)

Black
Green



Alessia
35PT6040

Jersey
(95% viscose/5% spandex)
Shirring at center front
body & back body
Dropped shoulder
Slim fit at body
with flounce hem
Knee length (37" HPS)

Black
Green



**Natasha
35PT6060**

Chiffon
(100% polyester)
Smocking & ruffle
at neck
Hook & eye hidden
at front neck
Elastic smocked waist
Flutter sleeve with ruffle
Tiered skirt with slit
at lower tiers
Ankle length at front
with hi/low hem
(49" at front, 52" at back)

**Black
Green**



**Natasha
35PT6060**

Chiffon
(100% polyester)
Smocking & ruffle
at neck
Hook & eye hidden
at front neck
Elastic smocked waist
Flutter sleeve with ruffle
Tiered skirt with slit
at lower tiers
Ankle length at front
with hi/low hem
(49" at front,
52" at back)

**Black
Green**



Wandering West



Shira
35WW2020

Matte jersey
(96% polyester/
4% spandex)
Pleat under placket
at front
3/4 length balloon
sleeve with cuff
Slim, easy fit body
Hip length with
curved hem

Black
Blue
Pink



Shira
35WW2020

Matte jersey
(96% polyester/
4% spandex)
Pleat under placket
at front
3/4 length balloon
sleeve with cuff
Slim, easy fit body
Hip length with
curved hem

Black
Blue
Pink



Shira
35WW2020

Matte jersey
(96% polyester/
4% spandex)
Pleat under placket
at front
3/4 length balloon
sleeve with cuff
Slim, easy fit body
Hip length with
curved hem

Black
Blue
Pink





**Halle
35WW2040**

Twill
(55% viscose/
45% rayon)
Scarf neck tie
with deep keyhole
Slim, easy fit
Low hip length
with curved hem

**Black
Blue
Pink**



**Halle
35WW2040**

Twill
(55% viscose/
45% rayon)
Scarf neck tie
with deep keyhole
Slim, easy fit
Low hip length
with curved hem

**Black
Blue
Pink**



**Halle
35WW2040**

Twill
(55% viscose/
45% rayon)
Scarf neck tie
with deep keyhole
Slim, easy fit
Low hip length
with curved hem

**Black
Blue
Pink**

**Elizaveta
35WW2060**

Twill
(55% viscose/
45% rayon)
Buttons at front
body
Long sleeve
with cuff
Hip length with
curved hem

**Black
Blue
Pink**



**Elizaveta
35WW2060**

Twill
(55% viscose/
45% rayon)
Buttons at front body
Long sleeve with cuff
Hip length
with curved hem

**Black
Blue
Pink**



**Elizaveta
35WW2060**

Twill
(55% viscose/
45% rayon)
Buttons at front body
Long sleeve with cuff
Hip length
with curved hem

**Black
Blue
Pink**





Leya
35WW5020

Twill
(55% viscose/
45% rayon)
Functional front
zip closure
Pockets at hips
Pleating at waist
Easy wide leg
Full length (31" Inseam)

Black
Blue
Pink



Leya
35WW5020

Twill
(55% viscose/
45% rayon)
Functional front
zip closure
Pockets at hips
Pleating at waist
Easy wide leg
Full length (31" Inseam)

Black
Blue
Pink



Leya
35WW5020

Twill
(55% viscose/
45% rayon)
Functional front
zip closure
Pockets at hips
Pleating at waist
Easy wide leg
Full length (31" Inseam)

Black
Blue
Pink



Leya
35WW502S

Twill
(55% viscose/
45% rayon)
Functional front
zip closure
Pockets at hips
Pleating at waist
Easy wide leg
Full length (31" Inseam)

Black



Floriana
35WW6020

Washed linen
(100% linen)
Enamel buttons at
front body
7/8 length sleeve
with elastic at opening
Pintuck pleats & crochet
details at body & sleeve
Tie belt at waist
Gussets at skirt, swingy fit
Above the knee length
(36" HPS)

Black
Blue
Pink



Floriana
35WW6020

Washed linen
(100% linen)
Enamel buttons at
front body
7/8 length sleeve
with elastic at opening
Pintuck pleats & crochet
details at body & sleeve
Tie belt at waist
Gussets at skirt, swingy fit
Above the knee length
(36" HPS)

Black
Blue
Pink



**Floriana
35WW6020**

Washed linen
(100% linen)
Enamel buttons at
front body
7/8 length sleeve
with elastic at opening
Pintuck pleats & crochet
details at body & sleeve
Tie belt at waist
Gussets at skirt, swingy fit
Above the knee length
(36" HPS)

**Black
Blue
Pink**



**Floriana
35WW602S**

Washed linen
(100% linen)
Enamel buttons at
front body
7/8 length sleeve
with elastic at opening
Pintuck pleats & crochet
details at body & sleeve
Tie belt at waist
Gussets at skirt, swingy
fit
Above the knee length
(36" HPS)

**Black
Olive**



**Floriana
35WW602S**

Washed linen
(100% linen)
Enamel buttons at
front body
7/8 length sleeve
with elastic at opening
Pintuck pleats & crochet
details at body & sleeve
Tie belt at waist
Gussets at skirt, swingy
fit
Above the knee length
(36" HPS)

**Black
Olive**



Denise
35WW6040

Matte jersey
(96% polyester/
4% spandex)
Mesh lining
(92% nylon/8% spandex)
Voluminous elbow length
sleeve with smocked cuff
Pockets at hips
Deep hem added for length
Above the knee length
(35.5" HPS)

Black
Blue
Pink



Denise
35WW6040

Matte jersey
(96% polyester/
4% spandex)
Mesh lining
(92% nylon/8% spandex)
Voluminous elbow length
sleeve with smocked cuff
Pockets at hips
Deep hem added for length
Above the knee length
(35.5" HPS)

Black
Blue
Pink



Denise
35WW6040

Matte jersey
(96% polyester/
4% spandex)
Mesh lining
(92% nylon/8% spandex)
Voluminous elbow length
sleeve with smocked cuff
Pockets at hips
Deep hem added for length
Above the knee length
(35.5" HPS)

Black
Blue
Pink

HALE BOB

LOS ANGELES

Season 6





Mosaic
Muse

Joleen
36AU2020

Washed Charmeuse
(25% silk/75% viscose)
Pleating at shoulder
Voluminous sleeve
with cuff at wrist
Hip length
with curved hem

36AU202B
(BEADED)

Hand beading
on neckline

Black
Ivory
Teal



Joleen
36AU2020

Washed Charmeuse
(25% silk/75% viscose)
Pleating at shoulder
Voluminous sleeve
with cuff at wrist
Hip length
with curved hem

36AU202B
(BEADED)

Hand beading
on neckline

Black
Ivory
Teal

Joleen
36AU2020

Washed Charmeuse
(25% silk/75% viscose)
Pleating at shoulder
Voluminous sleeve
with cuff at wrist
Hip length
with curved hem

36AU202B
(BEADED)

Hand beading
on neckline

Black
Ivory
Teal



**Romily
36AU2040**

Jersey
(95% viscose/5% spandex)
Buttons at front placket
Long slim sleeve
Low hip length
with curved hem

**Black
Ivory
Teal**



**Romily
36AU2040**

Jersey
(95% viscose/5% spandex)
Buttons at front placket
Long slim sleeve
Low hip length
with curved hem

**Black
Ivory
Teal**



**Romily
36AU2040**

Jersey
(95% viscose/5% spandex)
Buttons at front placket
Long slim sleeve
Low hip length
with curved hem

**Black
Ivory
Teal**





**Levi
36AU2060**

Crepe woven
(55% viscose/45% rayon)
Voluminous balloon sleeve
Smocking at opening
Hip length with curved hem

**Black
Ivory
Teal**



**Levi
36AU2060**

Crepe woven
(55% viscose/45% rayon)
Voluminous balloon sleeve
Smocking at opening
Hip length with curved hem

**Black
Ivory
Teal**



**Levi
36AU2060**

Crepe woven
(55% viscose/45% rayon)
Voluminous balloon sleeve
Smocking at opening
Hip length with curved hem

**Black
Ivory
Teal**



**Jayleen
36AU6020**

Crepe woven
(55% viscose/45% rayon)
Easy fit, slim through
rib cage
Tiered, swingy fit at skirt
3/4 full sleeve with cuff
Above the knee length
(35.5" HPS)

**Black
Ivory
Teal**



**Jayleen
36AU6020**

Crepe woven
(55% viscose/45% rayon)
Easy fit, slim through
rib cage
Tiered, swingy fit at skirt
3/4 full sleeve with cuff
Above the knee length
(35.5" HPS)

**Black
Ivory
Teal**



**Jayleen
36AU6020**

Crepe woven
(55% viscose/45% rayon)
Easy fit, slim through
rib cage
Tiered, swingy fit at skirt
3/4 full sleeve with cuff
Above the knee length
(35.5" HPS)

**Black
Ivory
Teal**



**Kenley
36AU6040**

Matte jersey
(96% polyester/4% spandex)
Mesh lining
(92% nylon/8% spandex)
Pockets at hips
Long full sleeve with cuff
Deep hem added for length
Above the knee: 35.5" HPS

**Black
Ivory
Teal**



**Kenley
36AU6040**

Matte jersey
(96% polyester/4% spandex)
Mesh lining
(92% nylon/8% spandex)
Pockets at hips
Long full sleeve with cuff
Deep hem added for length
Above the knee: 35.5" HPS

**Black
Ivory
Teal**



**Kenley
36AU6040**

Matte jersey
(96% polyester/4% spandex)
Mesh lining
(92% nylon/8% spandex)
Pockets at hips
Long full sleeve with cuff
Deep hem added for length
Above the knee: 35.5" HPS

**Black
Ivory
Teal**



**Kenley
36AU604D**

Matte jersey
(96% polyester/4% spandex)
Mesh lining
(92% nylon/8% spandex)
Pockets at hips
Long full sleeve with cuff
Deep hem added for length
Below the knee: 41" HPS

**Black
Ivory
Teal**



**Kenley
36AU604D**

Matte jersey
(96% polyester/4% spandex)
Mesh lining
(92% nylon/8% spandex)
Pockets at hips
Long full sleeve with cuff
Deep hem added for length
Below the knee: 41" HPS

**Black
Ivory
Teal**



**Kenley
36AU604D**

Matte jersey
(96% polyester/4% spandex)
Mesh lining
(92% nylon/8% spandex)
Pockets at hips
Long full sleeve with cuff
Deep hem added for length
Below the knee: 41" HPS

**Black
Ivory
Teal**



**Soraya
36AU6060**

Crepe woven
(55% viscose/45% rayon)
Fitted waist with smocked
panel at back for easy fit
Balloon sleeve with
smocked cuff
Invisible zipper at back
Voluminous skirt
with gussets
Maxi length (58" HPS)

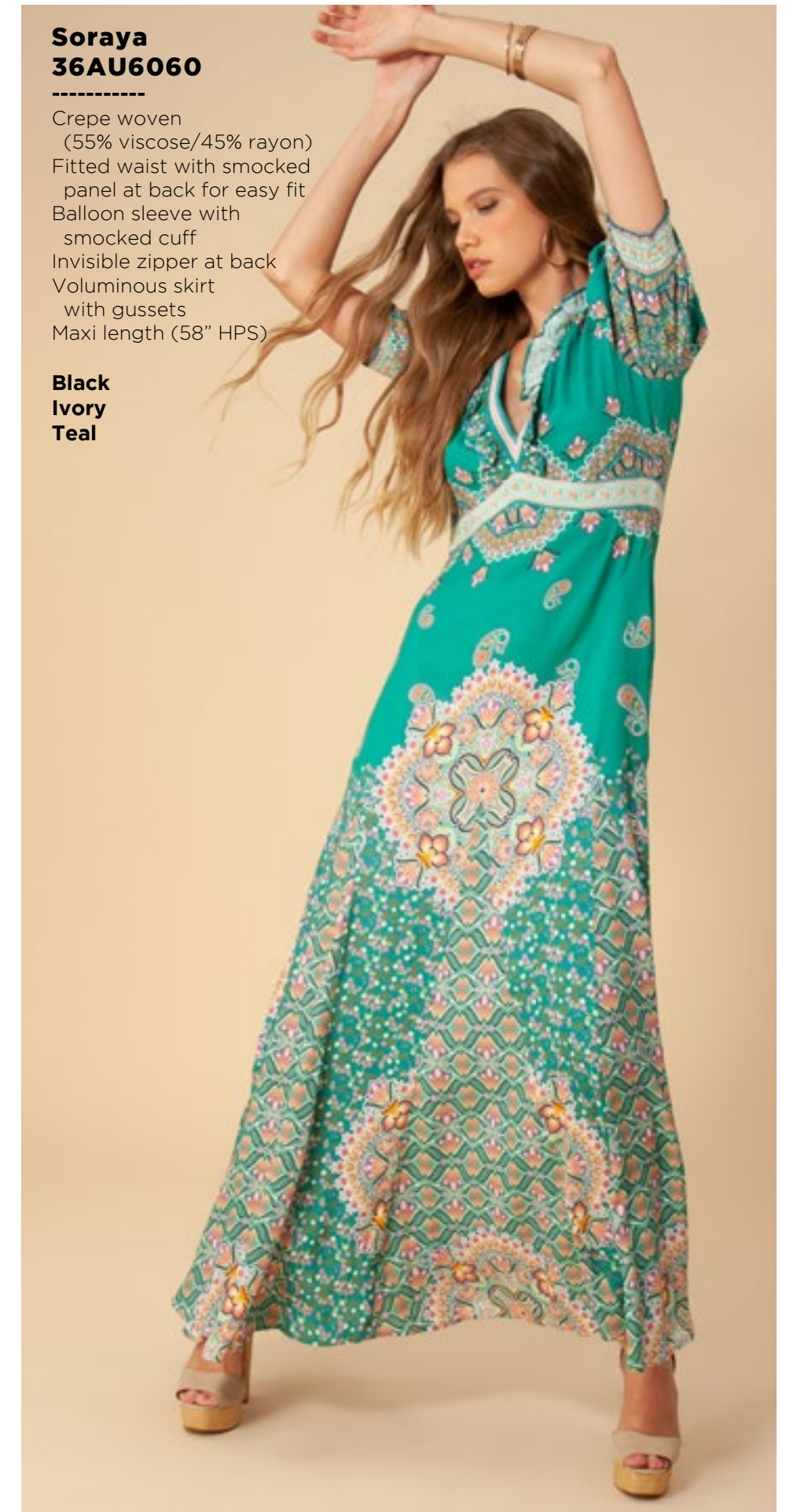
**Black
Ivory
Teal**



**Soraya
36AU6060**

Crepe woven
(55% viscose/45% rayon)
Fitted waist with smocked
panel at back for easy fit
Balloon sleeve with
smocked cuff
Invisible zipper at back
Voluminous skirt
with gussets
Maxi length (58" HPS)

**Black
Ivory
Teal**



**Soraya
36AU6060**

Crepe woven
(55% viscose/45% rayon)
Fitted waist with smocked
panel at back for easy fit
Balloon sleeve with
smocked cuff
Invisible zipper at back
Voluminous skirt
with gussets
Maxi length (58" HPS)

**Black
Ivory
Teal**





Color Surge



**India
36CG2020**

Jersey
(95% viscose/5% spandex)
Shirring at center front body
Long slim sleeve with shirring
at the wrist
Slim fit, hip length

**Black
Ivory**



**India
36CG2020**

Jersey
(95% viscose/5% spandex)
Shirring at center front body
Long slim sleeve with shirring
at the wrist
Slim fit, hip length

**Black
Ivory**



**Lise
36CG2040**

Twill
(55% viscose/45% rayon)
Sheer crochet insert at sleeve
Voluminous sleeve with pleating
at the shoulder, smocked wrist
Hip length with curved hem

**Black
Ivory**



**Lise
36CG2040**

Twill
(55% viscose/45% rayon)
Sheer crochet insert at sleeve
Voluminous sleeve with pleating
at the shoulder, smocked wrist
Hip length with curved hem

**Black
Ivory**



**Corisande
36CG5020**

Twill
(55% viscose/45% rayon)
Functional front zip closure
Pockets at hips
Pleating at waist
Easy wide leg
Full length (31" Inseam)

**Black
Ivory**



**Corisande
36CG5020**

Twill
(55% viscose/45% rayon)
Functional front zip closure
Pockets at hips
Pleating at waist
Easy wide leg
Full length (31" Inseam)

**Black
Ivory**

Sorrel
36CG6020

Matte jersey
(96% polyester/4% spandex)
Long full sleeve
with smocked cuff
Slim fit through rib cage
Tiered swingy fit at skirt
Above the knee length
(35.5" HPS)

Black
Ivory



Sorrel
36CG6020

Matte jersey
(96% polyester/4% spandex)
Long full sleeve
with smocked cuff
Slim fit through rib cage
Tiered swingy fit at skirt
Above the knee length
(35.5" HPS)

Black
Ivory





**Celeste
36CG6040**

Chiffon
(100% polyester)
Smocking & ruffle at neck
Puff sleeves with smocked cuff
Tiered asymmetrical tulip skirt
with voluminous flounces
Shorter at front, maxi length
at back (58" HPS at back)

**Black
Ivory**



**Celeste
36CG6040**

Chiffon
(100% polyester)
Smocking & ruffle at neck
Puff sleeves with smocked cuff
Tiered asymmetrical tulip skirt
with voluminous flounces
Shorter at front, maxi length
at back (58" HPS at back)

**Black
Ivory**



**Phaedra
36CG6060**

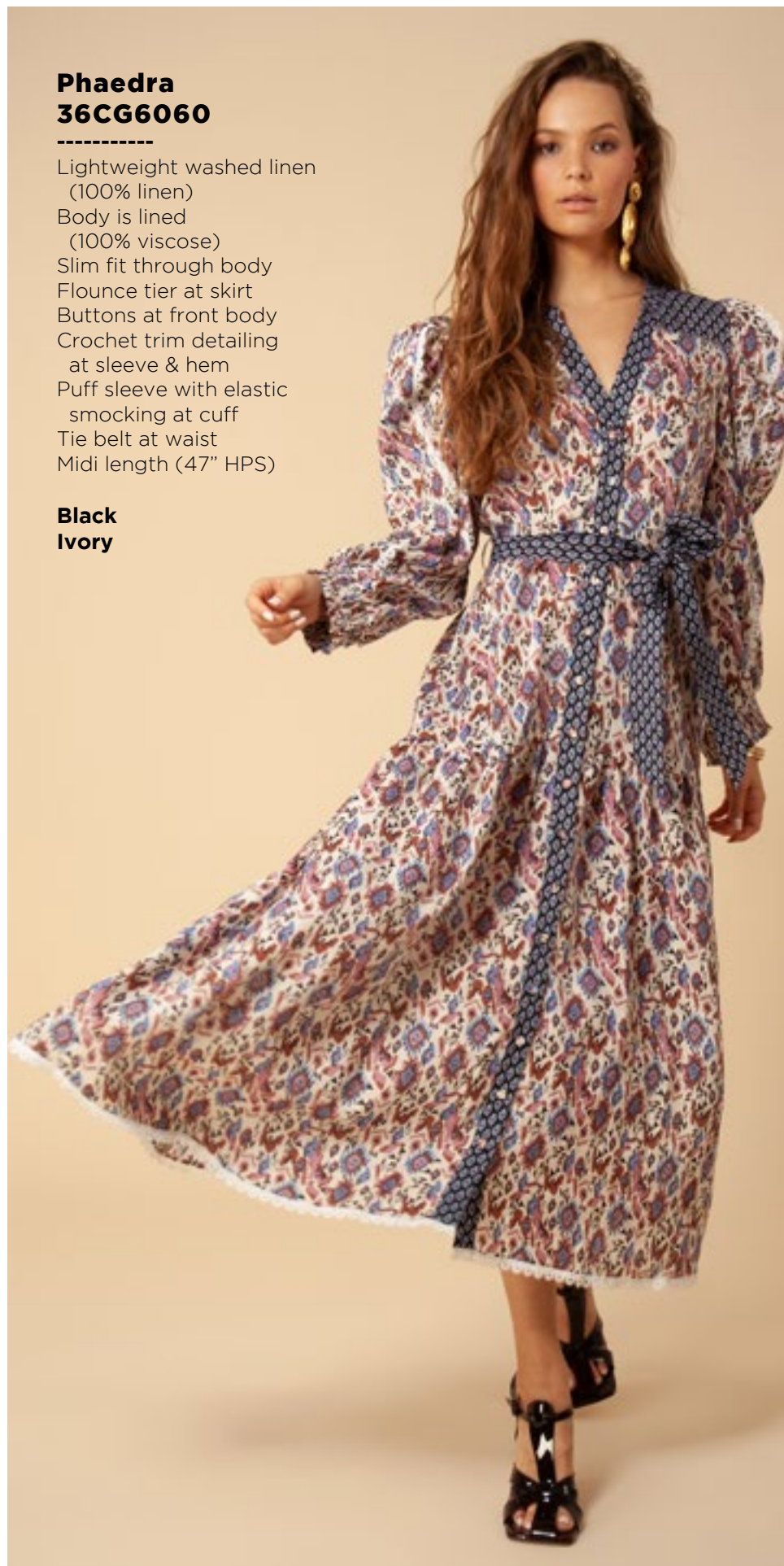
Lightweight washed linen
(100% linen)
Body is lined
(100% viscose)
Slim fit through body
Flounce tier at skirt
Buttons at front body
Crochet trim detailing
at sleeve & hem
Puff sleeve with elastic
smocking at cuff
Tie belt at waist
Midi length (47" HPS)

**Black
Ivory**

Phaedra
36CG6060

Lightweight washed linen
(100% linen)
Body is lined
(100% viscose)
Slim fit through body
Flounce tier at skirt
Buttons at front body
Crochet trim detailing
at sleeve & hem
Puff sleeve with elastic
smocking at cuff
Tie belt at waist
Midi length (47" HPS)

Black
Ivory



Sun Kissed



Dixon
36KD2020

Embroidered crepe
(55% viscose/45% rayon)
Yoke detail at front & back
Full sleeve with cuff
Hip length with curved hem

Black with Gold/Olive/Ivory embroidery



Elsa
36KD2040

Embroidered crepe
(55% viscose/45% rayon)
Voluminous balloon sleeve
with pleating at shoulder
Smocked cuff
Hip length with curved hem

Black with Gold/Olive/Ivory embroidery
Ivory with Blues/Olive embroidery



Elsa
36KD2040

Embroidered crepe
(55% viscose/45% rayon)
Voluminous balloon sleeve
with pleating at shoulder
Smocked cuff
Hip length with curved hem

Black with Gold/Olive/Ivory embroidery
Ivory with Blues/Olive embroidery





**Junia
36KD6020**

Embroidered crepe
(55% viscose/45% rayon)
Smocking & ruffle at neck
Full long sleeves with smocked cuff
Smocked waistband
Swingy skirt
Midi length (46" HPS)

Black with Gold/Olive/Ivory embroidery



**Amelia
36KD6040**

Embroidered crepe
(55% viscose/45% rayon)
Easy fit, slim through rib cage
Tiered, swingy fit at skirt
Long sleeve with tier at lower part
Cuff at wrist
Above the knee length (35.5" HPS)

Black with Gold/Olive/Ivory embroidery



**Amelia
36KD604M**

Embroidered crepe
(55% viscose/45% rayon)
Easy fit, slim through rib cage
Tiered, swingy fit at skirt
Long sleeve with tier at lower part
Cuff at wrist
Maxi length (58" HPS)

Black with Gold/Olive/Ivory embroidery



Belle Fleur



Leah
36RB2020

Matte jersey
(96% polyester/
4% spandex)
Pleat at CF under placket
Long sleeve with cuff
Hip with curved hem

Ivory
Orange



Leah
36RB2020

Matte jersey
(96% polyester/
4% spandex)
Pleat at CF under placket
Long sleeve with cuff
Hip with curved hem

Ivory
Orange



Maya
36RB2040

Washed chiffon
(70% rayon/30% silk)
Jersey lining cami slip
(95% viscose/5% spandex)
Pleating at front body,
partial button placket
Long full sleeve with
smocked cuff
Easy, voluminous fit
Low hip length with
curved hem

Ivory
Orange





**Maya
36RB2040**

Washed chiffon
(70% rayon/30% silk)
Jersey lining cami slip
(95% viscose/5% spandex)
Pleating at front body,
partial button placket
Long full sleeve with
smocked cuff
Easy, voluminous fit
Low hip length with
curved hem

**Ivory
Orange**



**Fawn
36RB6020**

Matte jersey
(96% polyester/
4% spandex)
Mesh lining
(92% nylon/8% spandex)
Slim fit through waist
3/4 length balloon
sleeve with cuff
A-line skirt with pleat
at waist
Below the knee length
(40"HPS)

**Ivory
Orange**



**Fawn
36RB6020**

Matte jersey
(96% polyester/
4% spandex)
Mesh lining
(92% nylon/8% spandex)
Slim fit through waist
3/4 length balloon
sleeve with cuff
A-line skirt with pleat
at waist
Below the knee length
(40"HPS)

**Ivory
Orange**



**Floria
36RB6040**

Matte jersey
(96% polyester/4% spandex)
Shirring at front neck
is adjustable with spaghetti
ties at back neck
Shirring at front & back body
Long slim sleeve with shirring
Slim fit at body
with flounce hem
Maxi length (58" HPS)

**Ivory
Orange**



**Floria
36RB6040**

Matte jersey
(96% polyester/4% spandex)
Shirring at front neck
is adjustable with spaghetti
ties at back neck
Shirring at front & back body
Long slim sleeve with shirring
Slim fit at body
with flounce hem
Maxi length (58" HPS)

**Ivory
Orange**



On Edge





**Kenzie
36TE2020**

Washed challis
(100% viscose)
Voluminous sleeve
with cuff
Easy fit
Low hip length with
curved hem

**Black
Navy**



**Kenzie
36TE2020**

Washed challis
(100% viscose)
Voluminous sleeve
with cuff
Easy fit
Low hip length with
curved hem

**Black
Navy**



**Lania
36TE2040**

Matte jersey
(96% polyester/
4% spandex)
Metal snaps at front
placket & cuff
Slim, easy fit
Low hip length

**Black
Navy**



Lania
36TE2040

Matte jersey
(96% polyester/
4% spandex)
Metal snaps at front
placket & cuff
Slim, easy fit
Low hip length

Black
Navy



Karlie
36TE5020

Matte jersey
(96% polyester/
4% spandex)
Foldover waistband
Slim fit leg with slight flare
Full length
(31" inseam)

Black
Navy



Karlie
36TE5020

Matte jersey
(96% polyester/
4% spandex)
Foldover waistband
Slim fit leg with slight flare
Full length
(31" inseam)

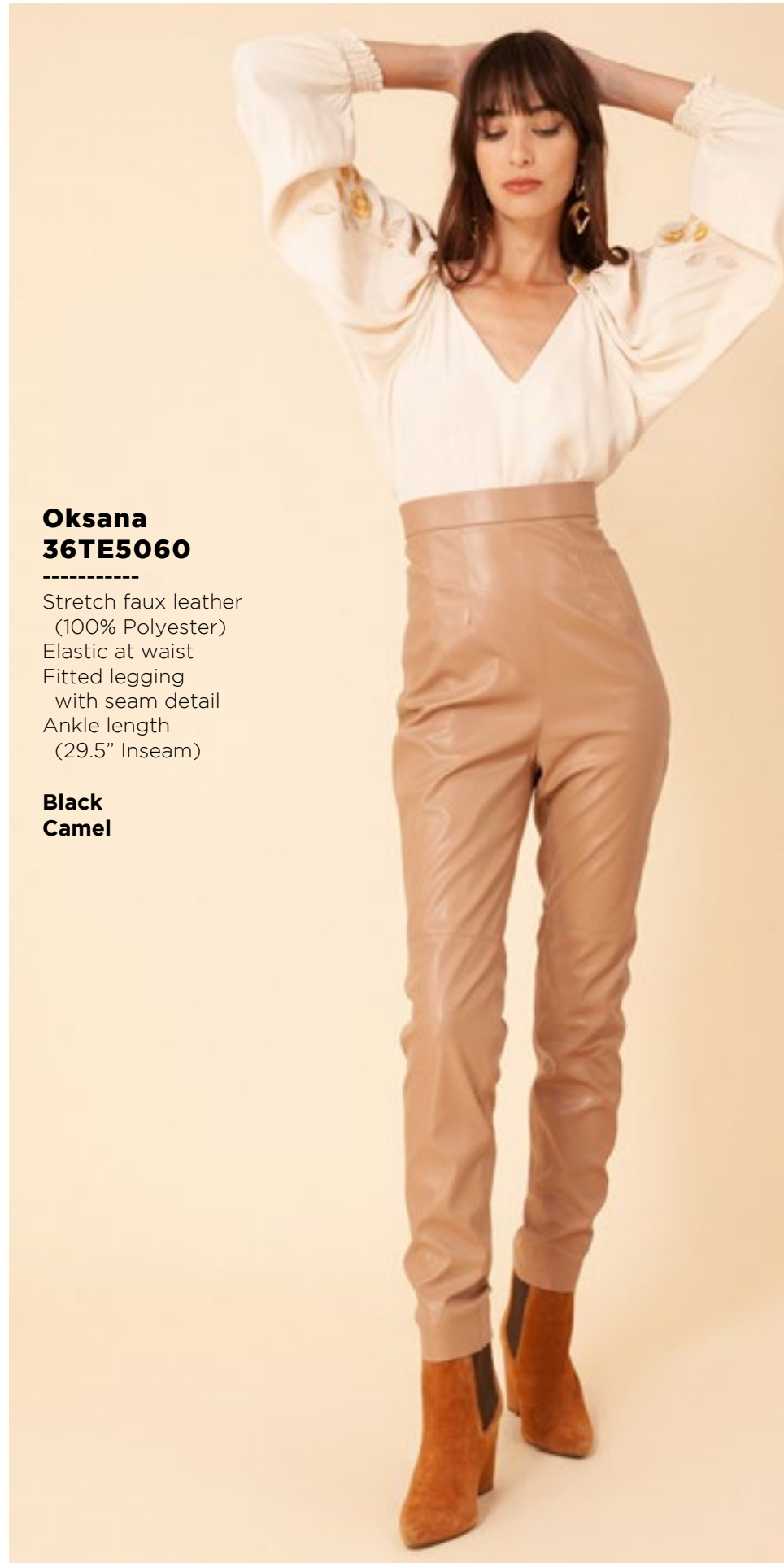
Black
Navy



**Oksana
36TE5060**

Stretch faux leather
(100% Polyester)
Elastic at waist
Fitted legging
with seam detail
Ankle length
(29.5" Inseam)

**Black
Camel**



**Oksana
36TE5060**

Stretch faux leather
(100% Polyester)
Elastic at waist
Fitted legging
with seam detail
Ankle length
(29.5" Inseam)

**Black
Camel**



**Corbin
36TE5080**

Stretch faux leather
(100% Polyester)
Functional zip at front
Faux pockets at front
Patch pockets at back
Flared leg
Full length (31" Inseam)

**Black
Camel**



**Corbin
36TE5080**

Stretch faux leather
(100% Polyester)
Functional zip at front
Faux pockets at front
Patch pockets at back
Flared leg
Full length (31" Inseam)

**Black
Camel**



**Mevel
36TE6020**

Washed challis
(100% viscose)
Slim easy fit through
rib cage
Voluminous tiered skirt
Long full sleeve with
smocked cuff
Midi length (47" HPS)

**Black
Navy**



**Mevel
36TE6020**

Washed challis
(100% viscose)
Slim easy fit through
rib cage
Voluminous tiered skirt
Long full sleeve with
smocked cuff
Midi length (47" HPS)

**Black
Navy**



Melanie
36TE6040

Matte jersey
(96% polyester/
4% spandex)
Mesh lining
(92% nylon/8% spandex)
Faux leather contrasts
Equestrian buckle at neck
(not functional)
Pleat at front under
placket
Full length sleeve
with snap

Black
Navy



Melanie
36TE6040

Matte jersey
(96% polyester/
4% spandex)
Mesh lining
(92% nylon/8% spandex)
Faux leather contrasts
Equestrian buckle at neck
(not functional)
Pleat at front under
placket
Full length sleeve
with snap

Black
Navy

Cameo
36TE7020

Stretch faux leather
(100% Polyester)
Metal zip & snap detailing
Hip length

Black
Camel



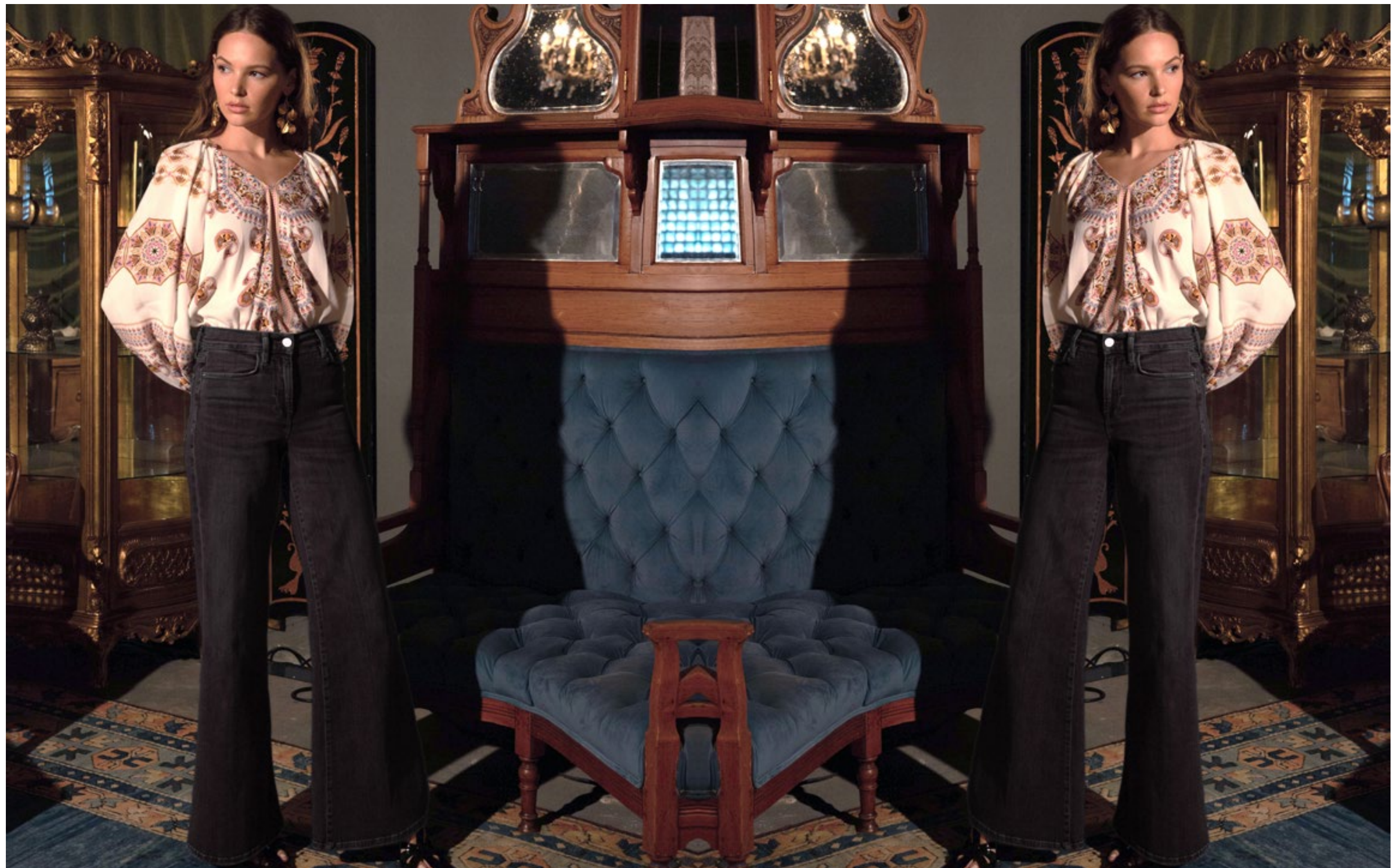
Cameo
36TE7020

Stretch faux leather
(100% Polyester)
Metal zip & snap detailing
Hip length

Black
Camel









Blake
ODEN510A

Made in the USA
Cotton stretch denim
High waisted fit
Wide leg with flare
Stitched pin tuck
Side pockets at front
Patch pockets at back
Shipped with 33" inseam
Deep hem to adjust length

Dark Blue Wash



Running Wild



Hailee
36WY2020

Lurex dobby woven
(100% viscose)
Buttons at front keyhole
Tie at neck
Long raglan sleeve
with ruffles
Hip length with
curved hem

Black
Yellow



Hailee
36WY2020

Lurex dobby woven
(100% viscose)
Buttons at front keyhole
Tie at neck
Long raglan sleeve
with ruffles
Hip length with
curved hem

Black
Yellow



Livia
36WY2040

Crepe
(100% viscose)
Elastic at top can be worn
on or off shoulder
Tie at front
Voluminous sleeve
with ruffle
Cuff at wrist
Low hip length

Black
Yellow





Livia
36WY2040

Crepe
(100% viscose)
Elastic at top can be worn
on or off shoulder
Tie at front
Voluminous sleeve
with ruffle
Cuff at wrist
Low hip length

Black
Yellow

Valentina
36WY6020

Soft stretch jersey
(95% micro modal/
5% Lycra
Twisted drape at
front bodice
7/8 length slim sleeve
with elastic at wrist
Voluminous swing skirt
Above the knee length
(35.5" HPS)

Black
Yellow



Valentina
36WY6020

Soft stretch jersey
(95% micro modal/
5% Lycra
Twisted drape at
front bodice
7/8 length slim sleeve
with elastic at wrist
Voluminous swing skirt
Above the knee length
(35.5" HPS)

Black
Yellow



Jade
36WY6040

Lurex Jacquard
(100% polyester)
Short sleeve
Tiered voluminous skirt
with slit at lower tiers
Ankle length with slight
hi/low (49" HPS at front,
52" at back)

Black
Yellow



Jade
36WY6040

Lurex Jacquard
(100% polyester)
Short sleeve
Tiered voluminous skirt
with slit at lower tiers
Ankle length with slight
hi/low (49" HPS at front,
52" at back)

Black
Yellow



This book is a presentation of a selection of Hale Bob product and is correct at time of publication.

To view the entire collection of products including updates and additions. You can view product line sheets at halebob.com by logging into the "Merchant" section of our website.

Prices and products posted in this book are current at time of publication but are subject to change.

Sales Director

East Coast
South East
Puerto Rico
Canada
Majors

Cathy Cooley

310-963-2463
cathy@halebob.com

Sales Executive

Mexico
Central America
South America

Maria Garcia

323-394-1739
mariag@halebob.com

Sales Executive

West Coast

For Marketing & Press Inquiries:

Marianna Gunther
marianna@halebob.com

HALE BOB

LOS ANGELES

