



HALE BOB

LOS ANGELES

SPRING 2023



HALE BOB

LOS ANGELES

SEASON 1



LIKE MAGIC

**Ilaria**  
**31AG2020**

Lightweight washed  
linen (100% linen)  
Sheer crochet insert  
at voluminous sleeve  
Hip length with  
curved hem

**Ivory  
Pink**

**\$128**



**Ilaria**  
**31AG202S**

Lightweight washed  
linen (100% linen)  
Sheer crochet insert  
at voluminous sleeve  
Hip length with  
curved hem

**Ivory  
Navy**

**\$108**



**Ilaria**  
**31AG202S**

Lightweight washed  
linen (100% linen)  
Sheer crochet insert  
at voluminous sleeve  
Hip length with  
curved hem

**Ivory  
Navy**

**\$108**





**Hartigan  
31AG2040**

Jersey (95% viscose /5% spandex)  
Voluminous pleated sleeve with draped band  
Easy fit through body  
High hip length

**Ivory  
Pink**

**\$78**



**Hartigan  
31AG2040**

Jersey (95% viscose /5% spandex)  
Voluminous pleated sleeve with draped band  
Easy fit through body  
High hip length

**Ivory  
Pink**

**\$78**



**Mireia  
31AG2060**

Washed crepe de chine (100% silk)  
Voluminous sleeve with smocked cuff  
Enamel buttons at front body  
Hip length

**Ivory  
Pink**

**\$148**

**Mireia**  
**31AG2060**

Washed crepe de chine  
(100% silk)  
Voluminous sleeve  
with smocked cuff  
Enamel buttons at  
front body  
Hip length

**Ivory**  
**Pink**

**\$148**



**Bronwyn**  
**31AG5010**

Lightweight washed  
linen (100% linen)  
Fully lined  
(100% cotton)  
Flat front waist with  
smocked back  
Tie at waist  
Full easy fit straight leg  
Pockets at hips  
31" Inseam

**Ivory**  
**Pink**

**\$138**



**Bronwyn**  
**31AG5010**

Lightweight washed  
linen (100% linen)  
Fully lined  
(100% cotton)  
Flat front waist with  
smocked back  
Tie at waist  
Full easy fit straight leg  
Pockets at hips  
31" Inseam

**Ivory**  
**Pink**

**\$138**





**Bronwyn  
31AG501S**

Lightweight washed  
linen (100% linen)  
Fully lined  
(100% cotton)  
Flat front waist with  
smocked back  
Tie at waist  
Full easy fit straight leg  
Pockets at hips  
31" Inseam

**Ivory  
Pink**

**\$118**



**Bronwyn  
31AG501S**

Lightweight washed  
linen (100% linen)  
Fully lined  
(100% cotton)  
Flat front waist with  
smocked back  
Tie at waist  
Full easy fit straight leg  
Pockets at hips  
31" Inseam

**Ivory  
Pink**

**\$118**



**Garland  
31AG6020**

Washed charmeuse  
(Viscose/Rayon)  
Long sleeve with  
smocked cuff  
Elastic with blouson  
at low hip  
Tiered swingy skirt  
Above the knee length  
(35" HPS)

**Ivory  
Pink**

**\$128**

**Garland**  
**31AG6020**

Washed charmeuse  
(Viscose/Rayon)  
Long sleeve with  
smocked cuff  
Elastic with blouson  
at low hip  
Tiered swingy skirt  
Above the knee length  
(35" HPS)

**Ivory  
Pink**

**\$128**



**Daisie**  
**31AG6040**

Lightweight washed  
linen (100% linen)  
Fully lined (100%  
cotton)  
Enamel buttons at  
front body  
Large button  
detailing  
Covered belt  
included  
Dropped sleeve  
Above the knee  
length: 35.5" HPS

**Ivory  
Pink**

**\$158**



**Daisie**  
**31AG6040**

Lightweight washed  
linen (100% linen)  
Fully lined (100%  
cotton)  
Enamel buttons at  
front body  
Large button  
detailing  
Covered belt  
included  
Dropped sleeve  
Above the knee  
length: 35.5" HPS

**Ivory  
Pink**

**\$158**





**Daisie  
31AG604D**

Lightweight washed  
linen (100% linen)  
Fully lined (100%  
cotton)  
Enamel buttons at  
front body  
Large button  
detailing  
Covered belt  
included  
Dropped sleeve  
Midi length: 44" HPS

**Ivory  
Pink**

**\$188**



**Daisie  
31AG604D**

Lightweight washed  
linen (100% linen)  
Fully lined (100%  
cotton)  
Enamel buttons at  
front body  
Large button  
detailing  
Covered belt  
included  
Dropped sleeve  
Midi length: 44" HPS

**Ivory  
Pink**

**\$188**



**Feya  
31AG6060**

Crepe (100% Vis-  
cose)  
Raglan sleeve with  
ruffle inserts  
Enamel buttons at  
top front bust  
Self tie belt at waist  
Gussets at skirt  
create volume  
Maxi length (59"HPS)

**Ivory  
Pink**

**\$198**



**Feya**  
**31AG6060**

Crepe (100% Viscose)  
Raglan sleeve with ruffle inserts  
Enamel buttons at top front bust  
Self tie belt at waist  
Gussets at skirt create volume  
Maxi length (59"HPS)

**Ivory Pink**

**\$198**



**Garnet**  
**31AG6080**

Matte jersey (96% polyester/4% spandex)  
Mesh lining (95% nylon/8% spandex)  
Pleat at CF under placket  
Voluminous sleeve with smocked cuff above elbow  
Pockets at hips  
Above the knee length (35.5" HPS)  
Deep hem added to adjust length

**\$108**

**31AG608B**  
(BEADED)

Hand beading on neckline

**\$118**

**Ivory Pink**



**Garnet**  
**31AG6080**

Matte jersey (96% polyester/4% spandex)  
Mesh lining (95% nylon/8% spandex)  
Pleat at CF under placket  
Voluminous sleeve with smocked cuff above elbow  
Pockets at hips  
Above the knee length (35.5" HPS)  
Deep hem added to adjust length

**\$108**

**31AG608B**  
(BEADED)

Hand beading on neckline

**\$118**

**Ivory Pink**



**Onyx**  
**31AG6090**

Matte jersey  
(96% polyester/4% spandex)  
Mesh lining  
(95% nylon/8% spandex)  
Pleat at CF  
under placket  
Voluminous sleeve  
with smocked  
cuff above elbow  
Pockets at hips  
Above the knee  
length (42" HPS)  
Deep hem added  
to adjust length

**\$118**

**31AG609B**  
(BEADED)

Hand beading  
on neckline

**\$128**

**Ivory**  
**Pink**



**Onyx**  
**31AG6090**

Matte jersey  
(96% polyester/4% spandex)  
Mesh lining  
(95% nylon/8% spandex)  
Pleat at CF  
under placket  
Voluminous sleeve with  
smocked  
cuff above elbow  
Pockets at hips  
Above the knee  
length (42" HPS) Deep hem  
added to adjust length

**\$118**

**31AG609B**  
(BEADED)

Hand beading  
on neckline

**\$128**

**Ivory**  
**Pink**



**Maluna**  
**31AG9410**

-----  
Jute tote  
Cotton dipped  
macrame straps  
Full lined with  
cotton voile  
Interior pocket

**Blue**  
**Pink**

**\$68**



**Maluna**  
**31AG9410**

-----  
Jute tote  
Cotton dipped  
macrame straps  
Full lined with  
cotton voile  
Interior pocket

**Blue**  
**Pink**

**\$68**







**BEST BUDS**



**Philipa  
31BB2020**

Washed embroidered  
linen (100% linen)  
Fully lined (100% cotton)  
Pleating detail at  
voluminous sleeve  
Elastic with ruffle  
at wrist  
Hip length with  
curved hem

**Beige  
Blue  
Pink**

**\$138**



**Philipa  
31BB2020**

Washed embroidered  
linen (100% linen)  
Fully lined (100% cotton)  
Pleating detail at  
voluminous sleeve  
Elastic with ruffle  
at wrist  
Hip length with  
curved hem

**Beige  
Blue  
Pink**

**\$138**



**Philipa  
31BB2020**

Washed embroidered  
linen (100% linen)  
Fully lined (100% cotton)  
Pleating detail at  
voluminous sleeve  
Elastic with ruffle  
at wrist  
Hip length with  
curved hem

**Beige  
Blue  
Pink**

**\$138**



**Yara  
31BB2040**

Embroidered crepe  
(55% viscose/45% rayon)  
Pintucking at front with  
laceup at neck  
Pleated balloon sleeve  
with smocked cuff  
above elbow  
Hip length

**Beige  
Blue  
Pink**

**\$118**



**Yara  
31BB2040**

Embroidered crepe  
(55% viscose/45% rayon)  
Pintucking at front with  
laceup at neck  
Pleated balloon sleeve  
with smocked cuff  
above elbow  
Hip length

**Beige  
Blue  
Pink**

**\$118**



**Yara  
31BB2040**

Embroidered crepe  
(55% viscose/45% rayon)  
Pintucking at front with  
laceup at neck  
Pleated balloon sleeve  
with smocked cuff  
above elbow  
Hip length

**Beige  
Blue  
Pink**

**\$118**





**Venize**  
**31BB6020**

-----  
Washed embroidered  
linen (100% linen)  
Fully lined (100% cotton)  
Buttons at front body  
Tiered voluminous body  
Long sleeve with  
smocked cuff  
Trim & eyelet detailing  
Above the knee length  
(35.5" HPS)

**Beige**  
**Blue**  
**Pink**

**\$188**



**Venize**  
**31BB6020**

-----  
Washed embroidered  
linen (100% linen)  
Fully lined (100% cotton)  
Buttons at front body  
Tiered voluminous body  
Long sleeve with  
smocked cuff  
Trim & eyelet detailing  
Above the knee length  
(35.5" HPS)

**Beige**  
**Blue**  
**Pink**

**\$188**



**Stephani  
31BB6040**

Embroidered crepe  
(55% viscose/45% rayon)  
Elastic under bust  
Short balloon sleeve  
with smocked cuff  
Ruffle, trim, and  
eyelet detailing  
Tiered asymmetrical  
voluminous skirt  
Pockets at hips  
Maxi length (59" HPS)

**Beige  
Blue  
Pink**

**\$198**



**Stephani  
31BB6040**

Embroidered crepe  
(55% viscose/45% rayon)  
Elastic under bust  
Short balloon sleeve  
with smocked cuff  
Ruffle, trim, and  
eyelet detailing  
Tiered asymmetrical  
voluminous skirt  
Pockets at hips  
Maxi length (59" HPS)

**Beige  
Blue  
Pink**

**\$198**



**Stephani  
31BB6040**

Embroidered crepe  
(55% viscose/45% rayon)  
Elastic under bust  
Short balloon sleeve  
with smocked cuff  
Ruffle, trim, and  
eyelet detailing  
Tiered asymmetrical  
voluminous skirt  
Pockets at hips  
Maxi length (59" HPS)

**Beige  
Blue  
Pink**

**\$198**





**FLOAT LIKE A BUTTERFLY**



**Donna  
31LY2020**

Washed georgette  
(100% silk)  
Jersey cami included  
(95% viscose  
/5% spandex)  
Ruffle at neckline  
with tie  
Voluminous sleeve  
with ruffles &  
smocked cuff  
Hip length with  
curved hem

**\$138**

**31LY202B**

(BEADED)

Hand beading  
on neckline

**\$148**

**Green  
Pink**



**Donna  
31LY2020**

Washed georgette  
(100% silk)  
Jersey cami included  
(95% viscose  
/5% spandex)  
Ruffle at neckline  
with tie  
Voluminous sleeve  
with ruffles &  
smocked cuff  
Hip length with  
curved hem

**\$138**

**31LY202B**

(BEADED)

Hand beading  
on neckline

**\$148**

**Green  
Pink**



**Melody  
31LY2040**

Washed georgette  
(100% silk)  
Double georgette lining  
(100% polyester)  
Elastic with ruffle at  
neck can be worn on  
or off the shoulder  
Flutter sleeve  
with ruffle edge  
High hip length  
with curved hem

**Green  
Pink**

**\$88**

**Melody**  
**31LY2040**

Washed georgette  
(100% silk)  
Double georgette lining  
(100% polyester)  
Elastic with ruffle at  
neck can be worn on  
or off the shoulder  
Flutter sleeve  
with ruffle edge  
High hip length  
with curved hem

**Green**  
**Pink**

**\$88**



**Rachael**  
**31LY6020**

Stretch Jersey  
(95% viscose  
/5% spandex)  
Elastic under bust  
with tie at waist  
3/4 length balloon  
sleeve with elastic  
at the opening  
Gussets at skirt  
create volume  
Above the knee length  
(35.5" HPS)

**Green**  
**Pink**

**\$138**



**Rachael**  
**31LY6020**

Stretch Jersey  
(95% viscose  
/5% spandex)  
Elastic under bust  
with tie at waist  
3/4 length balloon  
sleeve with elastic  
at the opening  
Gussets at skirt  
create volume  
Above the knee length  
(35.5" HPS)

**Green**  
**Pink**

**\$138**



**Honey**  
**31LY6040**

Washed georgette  
(100% silk)  
Double georgette lining  
(100% polyester)  
V-neck with tie  
Flutter sleeve with  
ruffle at opening  
Drop waist with elastic  
blouson at low hip  
Tiered ruffle swingy skirt  
Curved hem  
Mid-thigh length  
(34.5" HPS)

**Green**  
**Pink**

**\$128**



**Honey**  
**31LY6040**

Washed georgette  
(100% silk)  
Double georgette lining  
(100% polyester)  
V-neck with tie  
Flutter sleeve with  
ruffle at opening  
Drop waist with elastic  
blouson at low hip  
Tiered ruffle swingy skirt  
Curved hem  
Mid-thigh length  
(34.5" HPS)

**Green**  
**Pink**

**\$128**



**Honey**  
**31LY604D**

Washed georgette  
(100% silk)  
Double georgette lining  
(100% polyester)  
V-neck with tie  
Flutter sleeve with  
ruffle at opening  
Drop waist with elastic  
blouson at low hip  
Tiered ruffle swingy skirt  
Curved hem  
Midi length  
(47" HPS)

**Green**  
**Pink**

**\$148**



**Honey**  
**31LY604D**

-----  
Washed georgette  
(100% silk)  
Double georgette lining  
(100% polyester)  
V-neck with tie  
Flutter sleeve with  
ruffle at opening  
Drop waist with elastic  
blouson at low hip  
Tiered ruffle swingy skirt  
Curved hem  
Midi length  
(47" HPS)

**Green**  
**Pink**

**\$148**









**RAINBOW CONNECTION**



**Trinia  
31NC2020**

Washed voile  
(100% cotton)  
Enamel buttons at front  
Voluminous sleeve  
with smocked cuff  
Low hip length  
with slits at sides

**Beige  
Blue  
Pink**

**\$88**



**Trinia  
31NC2020**

Washed voile  
(100% cotton)  
Enamel buttons at front  
Voluminous sleeve  
with smocked cuff  
Low hip length  
with slits at sides

**Beige  
Blue  
Pink**

**\$88**



**Trinia  
31NC2020**

Washed voile  
(100% cotton)  
Enamel buttons at front  
Voluminous sleeve  
with smocked cuff  
Low hip length  
with slits at sides

**Beige  
Blue  
Pink**

**\$88**

**Catrona  
31NC2040**

Washed voile  
(100% cotton)  
Voile lining at body  
(100% cotton)  
Keyhole at front neck  
Double tiered  
flutter sleeve  
Hip length with  
curved hem

**Beige  
Blue  
Pink**

**\$78**



**Catrona  
31NC2040**

Washed voile  
(100% cotton)  
Voile lining at body  
(100% cotton)  
Keyhole at front neck  
Double tiered  
flutter sleeve  
Hip length with  
curved hem

**Beige  
Blue  
Pink**

**\$78**



**Catrona  
31NC2040**

Washed voile  
(100% cotton)  
Voile lining at body  
(100% cotton)  
Keyhole at front neck  
Double tiered  
flutter sleeve  
Hip length with  
curved hem

**Beige  
Blue  
Pink**

**\$78**





**Jessamy  
31NC6020**

-----  
Washed voile  
(100% cotton)  
Voile lining at body  
(100% cotton)  
Smocked waistband  
Balloon sleeve with  
smocked  
cuff above elbow  
Tiered voluminous  
skirt  
Midi length  
(47"HPS)

**Beige  
Blue  
Pink**

**\$148**



**Jessamy  
31NC6020**

-----  
Washed voile  
(100% cotton)  
Voile lining at body  
(100% cotton)  
Smocked waistband  
Balloon sleeve with  
smocked  
cuff above elbow  
Tiered voluminous skirt  
Midi length  
(47"HPS)

**Beige  
Blue  
Pink**

**\$148**



**Jessamy  
31NC6020**

-----  
Washed voile  
(100% cotton)  
Voile lining at body  
(100% cotton)  
Smocked waistband  
Balloon sleeve with  
smocked  
cuff above elbow  
Tiered voluminous skirt  
Midi length  
(47"HPS)

**Beige  
Blue  
Pink**

**\$148**



**Elsbeth  
31NC6040**

Washed voile  
(100% cotton)  
Voile lining at body  
(100% cotton)  
Easy fit, slim  
through rib cage  
Tiered, swiny fit  
at skirt  
3/4 full sleeve with  
smocked cuff  
Above the knee length  
(35.5" HPS)

**Beige  
Blue  
Pink**

**\$128**



**Elsbeth  
31NC6040**

Washed voile  
(100% cotton)  
Voile lining at body  
(100% cotton)  
Easy fit, slim  
through rib cage  
Tiered, swiny fit  
at skirt  
3/4 full sleeve with  
smocked cuff  
Above the knee length  
(35.5" HPS)

**Beige  
Blue  
Pink**

**\$128**



**Elsbeth  
31NC6040**

Washed voile  
(100% cotton)  
Voile lining at body  
(100% cotton)  
Easy fit, slim  
through rib cage  
Tiered, swiny fit  
at skirt  
3/4 full sleeve with  
smocked cuff  
Above the knee length  
(35.5" HPS)

**Beige  
Blue  
Pink**

**\$128**



**Elsbeth  
31NC604M**

Washed voile  
(100% cotton)  
Voile lining at body  
(100% cotton)  
Easy fit, slim  
through rib cage  
Tiered, swingy fit  
at skirt  
3/4 full sleeve with  
smocked cuff  
Maxi length  
(58" HPS)

**Beige  
Blue  
Pink**

**\$158**



**Elsbeth  
31NC604M**

Washed voile  
(100% cotton)  
Voile lining at body  
(100% cotton)  
Easy fit, slim  
through rib cage  
Tiered, swingy fit  
at skirt  
3/4 full sleeve with  
smocked cuff  
Maxi length  
(58" HPS)

**Beige  
Blue  
Pink**

**\$158**



**Elsbeth  
31NC604M**

Washed voile  
(100% cotton)  
Voile lining at body  
(100% cotton)  
Easy fit, slim  
through rib cage  
Tiered, swingy fit  
at skirt  
3/4 full sleeve with  
smocked cuff  
Maxi length  
(58" HPS)

**Beige  
Blue  
Pink**

**\$158**



**Calla  
31NC9410**

Cotton pitloom bag  
Voile lining (100% cotton)  
Pocket at inside, snap  
closure at top  
Dimensions:  
17" w x 18" l x 5" d

**Beige  
Blue  
Pink**

**\$68**

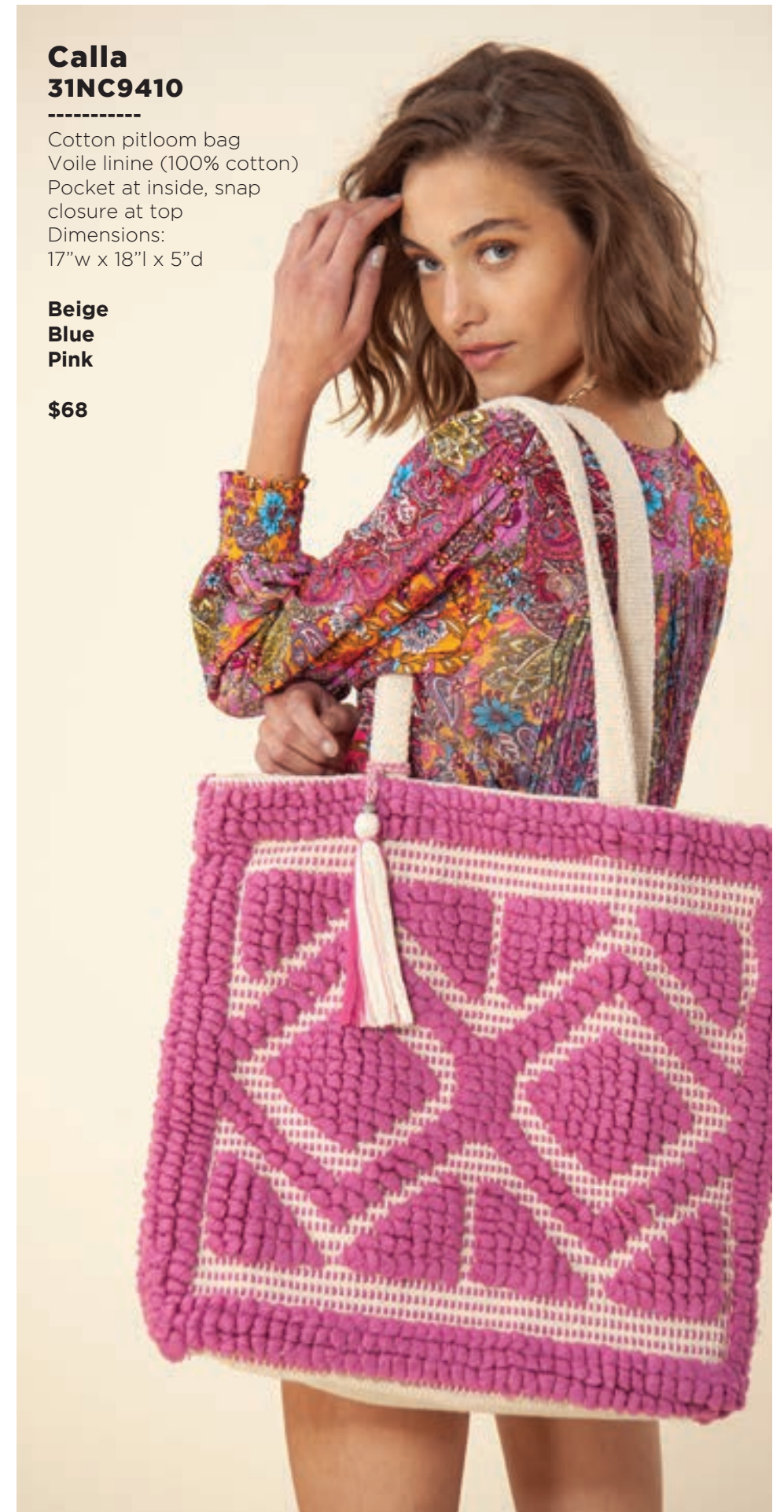


**Calla  
31NC9410**

Cotton pitloom bag  
Voile lining (100% cotton)  
Pocket at inside, snap  
closure at top  
Dimensions:  
17" w x 18" l x 5" d

**Beige  
Blue  
Pink**

**\$68**



**Calla  
31NC9410**

Cotton pitloom bag  
Voile lining (100% cotton)  
Pocket at inside, snap  
closure at top  
Dimensions:  
17" w x 18" l x 5" d

**Beige  
Blue  
Pink**

**\$68**







LEAF AND PETAL



**Tacey  
31TP2020**

Washed crepe de chine (100% silk)  
Ruffle neck with smocking & tie  
Buttons at front keyhole  
Voluminous sleeve with elastic at wrist  
Low hip length with curved hem

**Ivory  
Pink**

**\$138**



**Tacey  
31TP2020**

Washed crepe de chine (100% silk)  
Ruffle neck with smocking & tie  
Buttons at front keyhole  
Voluminous sleeve with elastic at wrist  
Low hip length with curved hem

**Ivory  
Pink**

**\$138**



**Aruna  
31TP2040**

Jersey (95% viscose/5% spandex)  
Smocking detail at yoke  
3/4 sleeve with smocked cuff  
High hip length with curved hem

**Ivory  
Pink**

**\$88**

**Aruna**  
**31TP2040**

Jersey (95% vis-  
cose/5% spandex)  
Smocking detail  
at yoke  
3/4 sleeve with  
smocked cuff  
High hip length  
with curved hem

**Ivory**  
**Pink**

**\$88**



**Oriena**  
**31TP5010**

Washed poplin (100% cotton)  
Romper with  
front closure  
Large enamel but-  
tons at front body  
Balloon short sleeve  
with smocked cuff  
High waist shorts  
with pleating  
Pockets at hips  
Self tie belt at waist  
3" Inseam with cuff

**Ivory**  
**Pink**

**\$148**



**Oriena**  
**31TP5010**

Washed poplin (100%  
cotton)  
Romper with  
front closure  
Large enamel buttons  
at front body  
Balloon short sleeve  
with smocked cuff  
High waist shorts  
with pleating  
Pockets at hips  
Self tie belt at waist  
3" Inseam with cuff

**Ivory**  
**Pink**

**\$148**





**Eola**  
**31TP6020**

-----  
Washed voile  
(100% cotton)  
Voile lining at body  
(100% cotton)  
Smocked waistband  
Balloon sleeve  
with eyelet trim  
3 tiered skirt with  
eyelet edges  
Above the knee  
length (35.5" HPS)

**Ivory  
Pink**

**\$148**



**Eola**  
**31TP6020**

-----  
Washed voile  
(100% cotton)  
Voile lining at body  
(100% cotton)  
Smocked waistband  
Balloon sleeve  
with eyelet trim  
3 tiered skirt with  
eyelet edges  
Above the knee length  
(35.5" HPS)

**Ivory  
Pink**

**\$148**



**Kestrel**  
**31TP6040**

-----  
Chiffon  
(100% polyester)  
Smocked bodice  
with tie  
Tiered voluminous  
skirt with slit  
at lower tiers  
Ankle length with  
slight hi/low  
(49" HPS at front,  
52" at back)

**Ivory  
Pink**

**\$128**

**Kestrel**  
**31TP6040**

Chiffon  
(100% polyester)  
Smocked bodice  
with tie  
Tiered voluminous  
skirt with slit  
at lower tiers  
Ankle length with  
slight hi/low  
(49" HPS at front,  
52" at back)

**Ivory**  
**Pink**

**\$128**



**Allegra**  
**31TP6080**

Matte jersey  
(96% polyester  
/4% spandex)  
Mesh lining  
(95% nylon  
/8% spandex)  
Pleat at CF under  
placket  
Voluminous sleeve  
with smocked  
cuff above elbow  
Pockets at hips  
Above the knee length  
(35.5" HPS)  
Deep hem added to  
adjust length

**\$108**

**31TP608B**  
(BEADED)

Hand beading  
on neckline

**\$118**

**Ivory**  
**Pink**



**Allegra**  
**31TP6080**

Matte jersey  
(96% polyester  
/4% spandex)  
Mesh lining  
(95% nylon  
/8% spandex)  
Pleat at CF under  
placket  
Voluminous sleeve  
with smocked  
cuff above elbow  
Pockets at hips  
Above the knee length  
(35.5" HPS)  
Deep hem added to  
adjust length

**\$108**

**31TP608B**  
(BEADED)

Hand beading  
on neckline

**\$118**

**Ivory**  
**Pink**





**Sonata  
31TP6090**

-----  
Matte jersey  
(96% polyester  
/4% spandex)  
Mesh lining  
(95% nylon  
/8% spandex)  
Pleat at CF under  
placket  
Voluminous  
sleeve with  
smocked  
cuff above elbow  
Pockets at hips  
Above the knee  
length (42" HPS)  
Deep hem added  
to adjust length

**\$118**

**31TP609B**  
(BEADED)

-----  
Hand beading  
on neckline

**\$128**

**Ivory  
Pink**



**Sonata  
31TP6090**

-----  
Matte jersey  
(96% polyester  
/4% spandex)  
Mesh lining  
(95% nylon  
/8% spandex)  
Pleat at CF under  
placket  
Voluminous  
sleeve with  
smocked  
cuff above elbow  
Pockets at hips  
Above the knee  
length (42" HPS)  
Deep hem added  
to adjust length

**\$118**

**31TP609B**  
(BEADED)

-----  
Hand beading  
on neckline

**\$128**

**Ivory  
Pink**



**SLICE OF SPRING**





**Mai**  
**31US2020**

Eyelet embroidered  
voile (100% cotton)  
Voile lining (100%  
cotton)  
Elastic & ruffle at top  
edge can be worn on  
or off shoulder

**Blue**  
**Pink**

**\$88**



**Mai**  
**31US2020**

Eyelet embroidered  
voile (100% cotton)  
Voile lining (100%  
cotton)  
Elastic & ruffle at top  
edge can be worn on  
or off shoulder

**Blue**  
**Pink**

**\$88**



**Mai**  
**31US202S**

Eyelet embroidered  
voile (100% cotton)  
Voile lining (100%  
cotton)  
Elastic & ruffle at top  
edge can be worn on  
or off shoulder

**Pink**  
**White**

**\$78**

**Mai**  
**31US202S**

Eyelet embroidered  
voile (100% cotton)  
Voile lining (100%  
cotton)  
Elastic & ruffle at top  
edge can be worn on  
or off shoulder

**Pink**  
**White**

**\$78**



**Maika**  
**31US2040**

Eyelet embroidered  
voile (100% cotton)  
Voile lining (100%  
cotton)  
Balloon sleeve with  
wide smocked band  
V-neck with smocking  
at shoulder

**Blue**  
**Pink**

**\$98**



**Maika**  
**31US2040**

Eyelet embroidered  
voile (100% cotton)  
Voile lining (100%  
cotton)  
Balloon sleeve with  
wide smocked band  
V-neck with smocking  
at shoulder

**Blue**  
**Pink**

**\$98**





**Maika  
31US204S**

Eyelet embroidered  
voile (100% cotton)  
Voile lining (100%  
cotton)  
Balloon sleeve with  
wide smocked band  
V-neck with smock-  
ing at shoulder

**Pink  
White**

**\$88**



**Maika  
31US204S**

Eyelet embroidered  
voile (100% cotton)  
Voile lining (100%  
cotton)  
Balloon sleeve with  
wide smocked band  
V-neck with smock-  
ing at shoulder

**Pink  
White**

**\$88**



**Amaryllis  
31US6020**

Eyelet embroidered voile  
(100% cotton)  
Voile lining (100% cotton)  
Voluminous tiered body  
7/8 length sleeve with  
ruffle  
Above the knee length  
(35.5" HPS)

**Blue  
Pink**

**\$128**



**Amaryllis**  
**31US6020**

-----  
Eyelet embroidered  
voile  
(100% cotton)  
Voile lining (100%  
cotton) Voluminous  
tiered body  
7/8 length sleeve  
with ruffle  
Above the knee  
length  
(35.5" HPS)

**Blue**  
**Pink**

**\$128**



**Amaryllis**  
**31US602S**

-----  
Eyelet embroidered voile  
(100% cotton)  
Voile lining (100% cotton)  
Voluminous tiered body  
7/8 length sleeve with  
ruffle  
Above the knee length  
(35.5" HPS)

**Blue**  
**Pink**

**\$118**



**Amaryllis**  
**31US602S**

-----  
Eyelet embroidered voile  
(100% cotton)  
Voile lining (100% cotton)  
Voluminous tiered body  
7/8 length sleeve with  
ruffle  
Above the knee length  
(35.5" HPS)

**Blue**  
**Pink**

**\$118**



**Sunny**  
**31US6040**

Slinky jersey  
95% viscose/5% span)  
Draped detail at front  
Short sleeve with shirring  
Above the knee length  
(35.5" HPS)

**Blue**  
**Pink**

**\$128**



**Sunny**  
**31US6040**

Slinky jersey  
95% viscose/5% span)  
Draped detail at front  
Short sleeve with shirring  
Above the knee length  
(35.5" HPS)

**Blue**  
**Pink**

**\$128**



**Joplin**  
**31US6060**

-----  
Crepe (100% viscose)  
Elastic under bust  
3/4 voluminous sleeve  
Elastic at shoulder & wrist  
Tiered swingy skirt  
Maxi length  
(54" HPS)

**Blue**  
**Pink**

**\$128**



**Joplin**  
**31US6060**

-----  
Crepe (100% viscose)  
Elastic under bust  
3/4 voluminous sleeve  
Elastic at shoulder & wrist  
Tiered swingy skirt  
Maxi length  
(54" HPS)

**Blue**  
**Pink**

**\$128**





# HALEBOB

LOS ANGELES

SEASON 2





**SUN AND SHADE**



**Lanthe  
32AN2020**

Jersey  
(95% viscose/  
5% spandex)  
Smocked yoke &  
ruffle detail  
Sleeve above elbow  
Easy fit body  
High hip length  
with curved hem

**Blue  
Ivory  
Pink**

**\$78**



**Lanthe  
32AN2020**

Jersey  
(95% viscose/  
5% spandex)  
Smocked yoke &  
ruffle detail  
Sleeve above elbow  
Easy fit body  
High hip length  
with curved hem

**Blue  
Ivory  
Pink**

**\$78**



**Lanthe  
32AN2020**

Jersey  
(95% viscose/  
5% spandex)  
Smocked yoke &  
ruffle detail  
Sleeve above elbow  
Easy fit body  
High hip length  
with curved hem

**Blue  
Ivory  
Pink**

**\$78**



**Lanthe  
32AN202S**

Jersey  
(95% viscose/  
5% spandex)  
Smocked yoke &  
ruffle detail  
Sleeve above  
elbow  
Easy fit body  
High hip length  
with curved hem

**Navy  
Pink  
White**

**\$68**



**Gloria  
32AN2040**

Washed crepe de chine  
(100% silk)  
Enamel buttons  
at front  
Voluminous sleeve  
with cuff  
Low hip length  
with slits at sides

**Blue  
Ivory  
Pink**

**\$148**



**Gloria  
32AN2040**

Washed crepe de chine (100% silk)  
Enamel buttons  
at front  
Voluminous sleeve  
with cuff  
Low hip length  
with slits at sides

**Blue  
Ivory  
Pink**

**\$148**



**Gloria**  
**32AN2040**

Washed crepe de chine (100% silk)  
Enamel buttons at front  
Voluminous sleeve with cuff  
Low hip length with slits at sides

**Blue**  
**Ivory**  
**Pink**

**\$148**



**Amity**  
**32AN2060**

Washed georgette (100% rayon)  
Jersey cami included (95% viscose/5% spandex)  
Buttons at front placket, ties at neck  
Long sleeve with smocked cuff.  
Hip length

**Blue**  
**Ivory**  
**Pink**

**\$108**



**Amity**  
**32AN2060**

Washed georgette (100% rayon)  
Jersey cami included (95% viscose/5% spandex)  
Buttons at front placket, ties at neck  
Long sleeve with smocked cuff.  
Hip length

**Blue**  
**Ivory**  
**Pink**

**\$108**



**Amity**  
**32AN2060**

Washed georgette  
(100% rayon)  
Jersey cami included  
(95% viscose/5% spandex)  
Buttons at front  
placket, ties at neck  
Long sleeve with  
smocked cuff.  
Hip length

**Blue**  
**Ivory**  
**Pink**

**\$108**



**Adaline**  
**32AN4020**

Jersey  
(95% viscose/  
5% spandex)  
Top skirt with lining  
Elastic at waist  
Draped front  
Front slit closes  
at mid-thigh  
Ankle length

**Blue**  
**Ivory**  
**Pink**

**\$88**



**Adaline**  
**32AN4020**

Jersey  
(95% viscose/  
5% spandex)  
Top skirt with lining  
Elastic at waist  
Draped front  
Front slit closes  
at mid-thigh  
Ankle length

**Blue**  
**Ivory**  
**Pink**

**\$88**



**Adaline  
32AN4020**

Jersey  
(95% viscose/  
5% spandex)  
Top skirt with lining  
Elastic at waist  
Draped front  
Front slit closes  
at mid-thigh  
Ankle length

**Blue  
Ivory  
Pink**

**\$88**

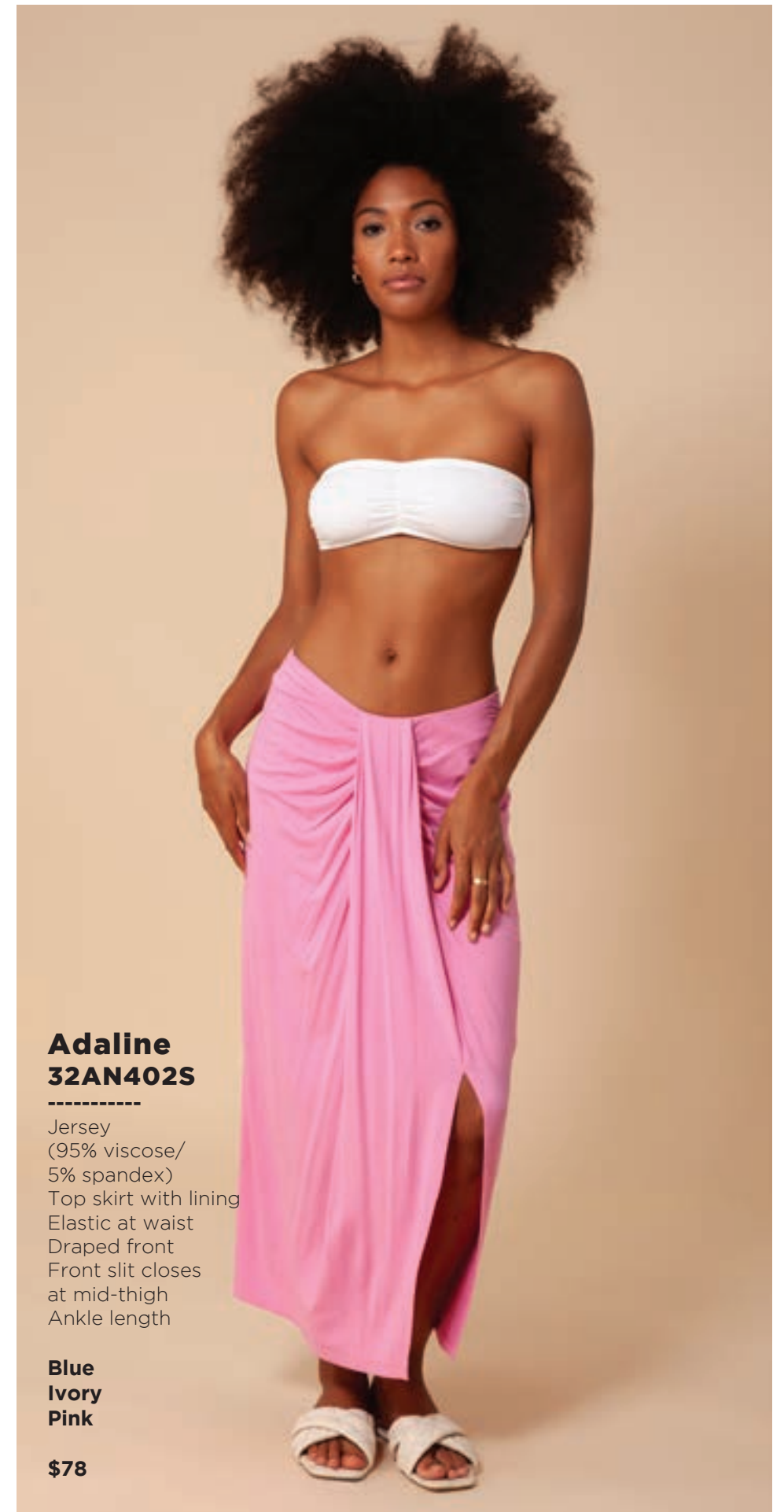


**Adaline  
32AN402S**

Jersey  
(95% viscose/  
5% spandex)  
Top skirt with lining  
Elastic at waist  
Draped front  
Front slit closes  
at mid-thigh  
Ankle length

**Blue  
Ivory  
Pink**

**\$78**



**Adaline  
32AN402S**

Jersey  
(95% viscose/  
5% spandex)  
Top skirt with lining  
Elastic at waist  
Draped front  
Front slit closes  
at mid-thigh  
Ankle length

**Blue  
Ivory  
Pink**

**\$78**



**Adaline**  
**32AN402S**

Jersey  
(95% viscose/  
5% spandex)  
Top skirt with lining  
Elastic at waist  
Draped front  
Front slit closes  
at mid-thigh  
Ankle length

**Blue**  
**Ivory**  
**Pink**

**\$78**



**Angelica**  
**32AN6020**

Washed challis  
(100% viscose)  
Pintucking at front  
& back body  
Laceup front  
Ruffle flounce sleeve  
Trim at sleeve & hem  
Swingy easy fit  
Above the knee length  
(35.5" HPS)

**Blue**  
**Ivory**  
**Pink**

**\$108**



**Angelica**  
**32AN6020**

Washed challis  
(100% viscose)  
Pintucking at front  
& back body  
Laceup front  
Ruffle flounce sleeve  
Trim at sleeve & hem  
Swingy easy fit  
Above the knee length  
(35.5" HPS)

**Blue**  
**Ivory**  
**Pink**

**\$108**



**Angelica**  
**32AN6020**

Washed challis  
(100% viscose)  
Pintucking at front  
& back body  
Laceup front  
Ruffle flounce sleeve  
Trim at sleeve & hem  
Swingy easy fit  
Above the knee length  
(35.5" HPS)

**Blue**  
**Ivory**  
**Pink**

**\$108**



**Mirabel**  
**32AN6040**

Matte jersey  
(96% polyester/  
4% spandex)  
V-neck at front  
Pockets at hips  
Bell sleeve  
Easy a-line body  
Above the  
knee length  
(35.5" HPS)

**Blue**  
**Ivory**  
**Pink**

**\$98**



**Mirabel**  
**32AN6040**

Matte jersey  
(96% polyester/  
4% spandex)  
V-neck at front  
Pockets at hips  
Bell sleeve  
Easy a-line body  
Above the  
knee length  
(35.5" HPS)

**Blue**  
**Ivory**  
**Pink**

**\$98**





**Mirabel  
32AN6040**

Matte jersey  
(96% polyester/  
4% spandex)  
V-neck at front  
Pockets at hips  
Bell sleeve  
Easy a-line body  
Above the  
knee length  
(35.5" HPS)

**Blue  
Ivory  
Pink**

**\$98**



**Goya  
32AN6060**

Washed challis  
(100% viscose)  
Enamel buttons  
detail at front  
Tie at front waist  
Balloon sleeve  
with smocking  
Voluminous  
gusset skirt  
Invisible zip at back  
Smocked panel at  
back bodice for  
comfortable slim fit  
Maxi length  
(59" HPS)

**Blue  
Ivory  
Pink**

**\$188**



**Goya  
32AN6060**

Washed challis  
(100% viscose)  
Enamel buttons  
detail at front  
Tie at front waist  
Balloon sleeve  
with smocking  
Voluminous  
gusset skirt  
Invisible zip at back  
Smocked panel at  
back bodice for  
comfortable slim fit  
Maxi length  
(59" HPS)

**Blue  
Ivory  
Pink**

**\$188**



**Goya**  
**32AN6060**

Washed challis  
(100% viscose)  
Enamel buttons  
detail at front  
Tie at front waist  
Balloon sleeve  
with smocking  
Voluminous  
gusset skirt  
Invisible zip at back  
Smocked panel at  
back bodice for  
comfortable slim fit  
Maxi length  
(59" HPS)

**Blue**  
**Ivory**  
**Pink**

**\$188**





HOPE BLOOMS



**Aolani  
32BL2020**  
-----

Washed crepe de chine  
(100% silk)  
Enamel buttons at front  
7/8 sleeve with  
herring at bottom

**Beige  
Pink**

**\$138**



**Aolani  
32BL202S**  
-----

Washed crepe  
de chine  
(100% silk)  
Enamel buttons  
at front  
7/8 sleeve with  
herring at bottom

**Ivory  
Navy  
Orange**

**\$118**



**Aolani  
32BL202S**  
-----

Washed crepe  
de chine  
(100% silk)  
Enamel buttons  
at front  
7/8 sleeve with  
herring at bottom

**Ivory  
Navy  
Orange**

**\$118**

**Aolani**  
**32BL202S**

Washed crepe de chine  
(100% silk)  
Enamel buttons  
at front  
7/8 sleeve with  
herring at bottom

**Ivory**  
**Navy**  
**Orange**

**\$118**



**Finualla**  
**32BL2040**

Washed Voile (30%  
silk/70% cotton)  
Jersey cami lining (95%  
viscose/5% spandex)  
Ruffle & tie at neckline  
Deep keyhole  
with buttons  
Long sleeve  
with eyelet trim  
at elastic cuff  
Low hip length  
with curved hem

**Beige**  
**Pink**

**\$118**



**Finualla**  
**32BL2040**

Washed Voile (30%  
silk/70% cotton)  
Jersey cami lining  
(95% viscose/5%  
spandex)  
Ruffle & tie at  
neckline  
Deep keyhole  
with buttons  
Long sleeve with  
eyelet trim at  
elastic cuff  
Low hip length  
with curved hem

**Beige**  
**Pink**

**\$118**





**Oba**  
**32BL5020**

Washed poplin  
(100% cotton)  
Large enamel  
buttons at front  
High waist shorts  
with pleating  
Pockets at hips  
Self tie belt at waist  
3" Inseam with cuff

**Beige**  
**Pink**

**\$88**



**Oba**  
**32BL502S**

Washed poplin  
(100% cotton)  
Large enamel  
buttons at front  
High waist shorts  
with pleating  
Pockets at hips  
Self tie belt at waist  
3" Inseam with cuff

**Ivory**  
**Navy**

**\$78**



**Oba**  
**32BL502S**

Washed poplin  
(100% cotton)  
Large enamel  
buttons at front  
High waist shorts  
with pleating  
Pockets at hips  
Self tie belt at waist  
3" Inseam with cuff

**Ivory**  
**Navy**

**\$78**

**Melania  
32BL6020**

Washed georgette  
(100% rayon)  
Jersey lining  
(95% viscose/  
5% spandex)  
Ruffle bands at  
armhole  
Enamel buttons  
at front keyhole  
Belt at waist  
Pockets at hips  
Swingy fit with  
ruffle hem  
Above the knee  
length  
(35.5" HPS)

**Beige  
Pink**

**\$118**



**Melania  
32BL6020**

Washed georgette  
(100% rayon)  
Jersey lining  
(95% viscose/  
5% spandex)  
Ruffle bands at  
armhole  
Enamel buttons  
at front keyhole  
Belt at waist  
Pockets at hips  
Swingy fit with  
ruffle hem  
Above the knee  
length  
(35.5" HPS)

**Beige  
Pink**

**\$118**



**Desirae  
32BL6040**

Washed poplin  
(100% cotton)  
Enamel buttons at  
front body  
(faux closure)  
Invisible zipper  
at back  
Slim fit with  
flared skirt  
Bell sleeves  
Trim edge detailing  
Pockets at hips  
Ankle length  
(50" HPS)

**Beige  
Pink**

**\$148**





**Desirae**  
**32BL6040**

Washed poplin  
(100% cotton)  
Enamel buttons at  
front body  
(faux closure)  
Invisible zipper  
at back  
Slim fit with  
flared skirt  
Bell sleeves  
Trim edge detailing  
Pockets at hips  
Ankle length  
(50" HPS)

**Beige**  
**Pink**

**\$148**



**Sylvia**  
**32BL6060**

Matte jersey  
(96% polyester/  
4% spandex)  
Mesh lining  
(95% nylon/  
8% spandex)  
Slim fit through  
bodice  
A-line skirt with  
pleat at waist  
3/4 balloon sleeve  
with cuff  
Below the knee  
length  
(41" HPS)

**Beige**  
**Pink**

**\$118**



**Sylvia**  
**32BL6060**

Matte jersey  
(96% polyester/  
4% spandex)  
Mesh lining  
(95% nylon/  
8% spandex)  
Slim fit through  
bodice  
A-line skirt with  
pleat at waist  
3/4 balloon sleeve  
with cuff  
Below the knee  
length  
(41" HPS)

**Beige**  
**Pink**

**\$118**





**BRIGHT STRIPES**



**Aleja  
32GH2020**

Embroidered crinkle gauze (100% viscose)  
Stretch Jersey front & back body (95% viscose 5% spandex)  
Balloon sleeve with smocked cuff  
Leaf crochet trim detail

**Blue  
Coral  
Gold**

**\$88**



**Aleja  
32GH2020**

Embroidered crinkle gauze (100% viscose)  
Stretch Jersey front & back body (95% viscose 5% spandex)  
Balloon sleeve with smocked cuff  
Leaf crochet trim detail

**Blue  
Coral  
Gold**

**\$88**



**Aleja  
32GH2020**

Embroidered crinkle gauze (100% viscose)  
Stretch Jersey front & back body (95% viscose 5% spandex)  
Balloon sleeve with smocked cuff  
Leaf crochet trim detail

**Blue  
Coral  
Gold**

**\$88**



**Kizzy  
32GH2040**

Embroidered  
crinkle gauze  
(100% viscose)  
Shirring at front  
Voluminous long  
sleeve with cuff  
Leaf crochet trim detail  
Hip length with  
curve hem

**Blue  
Coral  
Gold**

**\$88**



**Kizzy  
32GH2040**

Embroidered  
crinkle gauze  
(100% viscose)  
Shirring at front  
Voluminous long  
sleeve with cuff  
Leaf crochet trim detail  
Hip length with  
curve hem

**Blue  
Coral  
Gold**

**\$88**



**Kizzy  
32GH2040**

Embroidered  
crinkle gauze  
(100% viscose)  
Shirring at front  
Voluminous long  
sleeve with cuff  
Leaf crochet trim detail  
Hip length with  
curve hem

**Blue  
Coral  
Gold**

**\$88**



**Becky  
32GH6020**

Embroidered  
crinkle gauze  
(100% viscose)  
Body is lined  
(100% viscose)  
Ruffle bands at armhole  
Enamel buttons at  
front keyhole  
Elastic under the bust  
Tiered voluminous  
skirt with  
crochet leaf trim  
& ruffles  
Midi length  
(42" HPS)

**Blue  
Coral  
Gold**

**\$148**



**Becky  
32GH6020**

Embroidered  
crinkle gauze  
(100% viscose)  
Body is lined  
(100% viscose)  
Ruffle bands at armhole  
Enamel buttons at  
front keyhole  
Elastic under the bust  
Tiered voluminous  
skirt with  
crochet leaf trim  
& ruffles  
Midi length  
(42" HPS)

**Blue  
Coral  
Gold**

**\$148**



**Becky  
32GH6020**

Embroidered  
crinkle gauze  
(100% viscose)  
Body is lined  
(100% viscose)  
Ruffle bands at armhole  
Enamel buttons at  
front keyhole  
Elastic under the bust  
Tiered voluminous  
skirt with  
crochet leaf trim  
& ruffles  
Midi length  
(42" HPS)

**Blue  
Coral  
Gold**

**\$148**



**Taliah  
32GH6040**

Embroidered  
crinkle gauze  
(100% viscose)  
Body is lined  
(100% viscose)  
Easy fit, slim  
through rib cage  
Tiered, swingy fit at skirt  
Leaf crochet trim detail  
3/4 full sleeve  
with ruffle at hem  
Above the knee length  
(35.5" HPS)

**Blue  
Coral  
Gold**

**\$158**



**Taliah  
32GH6040**

Embroidered  
crinkle gauze  
(100% viscose)  
Body is lined  
(100% viscose)  
Easy fit, slim  
through rib cage  
Tiered, swingy fit at skirt  
Leaf crochet trim detail  
3/4 full sleeve  
with ruffle at hem  
Above the knee length  
(35.5" HPS)

**Blue  
Coral  
Gold**

**\$158**



**Taliah  
32GH6040**

Embroidered  
crinkle gauze  
(100% viscose)  
Body is lined  
(100% viscose)  
Easy fit, slim  
through rib cage  
Tiered, swingy fit at skirt  
Leaf crochet trim detail  
3/4 full sleeve  
with ruffle at hem  
Above the knee length  
(35.5" HPS)

**Blue  
Coral  
Gold**

**\$158**



**Taliah  
32GH604M**

Embroidered  
crinkle gauze  
(100% viscose)  
Body is lined  
(100% viscose)  
Easy fit, slim  
through rib cage  
Tiered, swingy fit at skirt  
Leaf crochet trim detail  
3/4 full sleeve  
with ruffle at hem  
Maxi length  
(59" HPS)

**Blue  
Coral  
Gold**

**\$188**



**Taliah  
32GH604M**

Embroidered  
crinkle gauze  
(100% viscose)  
Body is lined  
(100% viscose)  
Easy fit, slim  
through rib cage  
Tiered, swingy fit at skirt  
Leaf crochet trim detail  
3/4 full sleeve  
with ruffle at hem  
Maxi length  
(59" HPS)

**Blue  
Coral  
Gold**

**\$188**



**Taliah  
32GH604M**

Embroidered  
crinkle gauze  
(100% viscose)  
Body is lined  
(100% viscose)  
Easy fit, slim  
through rib cage  
Tiered, swingy fit at skirt  
Leaf crochet trim detail  
3/4 full sleeve  
with ruffle at hem  
Maxi length  
(59" HPS)

**Blue  
Coral  
Gold**

**\$188**



**Amaria  
32ND2020**

Swiss dot  
(100% cotton)  
Voluminous sleeve  
with pleating  
Hip length with  
curved high/low  
hem

**Ivory  
Pink**

**\$68**



**Amaria  
32ND2020**

Swiss dot  
(100% cotton)  
Voluminous sleeve  
with pleating  
Hip length with  
curved high/low hem

**Ivory  
Pink**

**\$68**



**Amaria  
32ND202S**

Swiss dot  
(100% cotton)  
Voluminous sleeve  
with pleating  
Hip length with  
curved high/low hem

**Light blue  
Pink  
White**

**\$78**





**Amaria**  
**32ND202S**

Swiss dot  
(100% cotton)  
Voluminous sleeve  
with pleating  
Hip length with  
curved high/low hem

**Light blue**  
**Pink**  
**White**

**\$78**



**Amaria**  
**32ND202S**

Swiss dot  
(100% cotton)  
Voluminous sleeve  
with pleating  
Hip length with  
curved high/low hem

**Light blue**  
**Pink**  
**White**

**\$78**



**Luanna  
32ND2040**

Swiss dot  
(100% cotton)  
Pleating at yokes  
Buttons at front placket  
Ruffle flounce sleeve  
Trim detailing at  
oke & sleeve  
High hip length  
with curved hem

**Ivory  
Pink**

**\$78**



**Luanna  
32ND2040**

Swiss dot  
(100% cotton)  
Pleating at yokes  
Buttons at front placket  
Ruffle flounce sleeve  
Trim detailing at  
oke & sleeve  
High hip length  
with curved hem

**Ivory  
Pink**

**\$78**



**Roxie  
32ND6020**

Swiss dot  
(100% cotton)  
Voile lining at body  
(100% cotton)  
Buttons at front body  
Trim inserts at  
sleeve & skirt  
Tiered voluminous skirt  
Self tie belt at waist  
Above the knee length  
(35.5" HPS)

**Ivory  
Pink**

**\$118**



**Roxie**  
**32ND6020**

Swiss dot  
(100% cotton)  
Voile lining at body  
(100% cotton)  
Buttons at front body  
Trim inserts at  
sleeve & skirt  
Tiered voluminous skirt  
Self tie belt at waist  
Above the knee length  
(35.5" HPS)

**Ivory**  
**Pink**

**\$118**



**Grace**  
**32ND6040**

Swiss dot  
(100% cotton)  
Voile lining at body  
(100% cotton)  
Pintuck detailing  
Ties at front neck  
3/4 length sleeve  
with elastic  
at opening  
Elastic at waist  
Voluminous  
tiered skirt  
Midi length  
(48" HPS)

**Ivory**  
**Pink**

**\$148**



**Grace**  
**32ND6040**

Swiss dot  
(100% cotton)  
Voile lining at body  
(100% cotton)  
Pintuck detailing  
Ties at front neck  
3/4 length sleeve  
with elastic  
at opening  
Elastic at waist  
Voluminous  
tiered skirt  
Midi length  
(48" HPS)

**Ivory**  
**Pink**

**\$148**

**Charlize**  
**32ND6060**

Lurex crepe  
(100% viscose)  
Voile lining at body  
(100% cotton)  
Asymmetrical bust  
with pleating  
at front shoulder  
Elastic at waist  
Tiered voluminous skirt  
Maxi length  
(59" HPS)

**Ivory  
Pink**

**\$168**



**Charlize**  
**32ND6060**

Lurex crepe  
(100% viscose)  
Voile lining at body  
(100% cotton)  
Asymmetrical bust  
with pleating  
at front shoulder  
Elastic at waist  
Tiered voluminous skirt  
Maxi length  
(59" HPS)

**Ivory  
Pink**

**\$168**



**Charlize**  
**32ND606S**

Lurex crepe  
(100% viscose)  
Voile lining at body  
(100% cotton)  
Asymmetrical bust  
with pleating  
at front shoulder  
Elastic at waist  
Tiered voluminous skirt  
Maxi length  
(59" HPS)

**Lilac  
Navy  
White**

**\$148**





**Charlize**  
**32ND606S**

-----  
Lurex crepe  
(100% viscose)  
Voile lining at body  
(100% cotton)  
Asymmetrical bust  
with pleating  
at front shoulder  
Elastic at waist  
Tiered voluminous skirt  
Maxi length  
(59" HPS)

**Lilac**  
**Navy**  
**White**

**\$148**



**Charlize**  
**32ND606S**

-----  
Lurex crepe  
(100% viscose)  
Voile lining at body  
(100% cotton)  
Asymmetrical bust  
with pleating  
at front shoulder  
Elastic at waist  
Tiered voluminous skirt  
Maxi length  
(59" HPS)

**Lilac**  
**Navy**  
**White**

**\$148**



CROCHET GETAWAY



**Alexane**  
**32QT2020**

-----  
Crochet  
(100% cotton)  
Jersey cami included  
(95% viscose  
5% spandex)  
Laceup at front neck  
7/8 length bell sleeve  
Low hip length  
(27" HPS)

**Ivory**  
**Navy**

**\$108**



**Kiki**  
**32QT6020**

-----  
Crochet  
(100% cotton)  
Jersey cami included  
(95% viscose  
5% spandex)  
Laceup at front neck  
7/8 length bell sleeve  
Above the knee length  
(35.5"HPS)

**Ivory**  
**Navy**

**\$118**



**Kiki**  
**32QT6020**

-----  
Crochet  
(100% cotton)  
Jersey cami included  
(95% viscose  
5% spandex)  
Laceup at front neck  
7/8 length bell sleeve  
Above the knee length  
(35.5"HPS)

**Ivory**  
**Navy**

**\$118**



**Uny**  
**32QT6040**

-----  
Crochet  
(100% cotton)  
Jersey cami included  
(95% viscose  
5% spandex)  
Boatneck  
Slim fit body  
Ankle length  
57"HPS)

**Ivory**  
**Navy**

**\$128**



**Uny**  
**32QT6040**

-----  
Crochet  
(100% cotton)  
Jersey cami included  
(95% viscose  
5% spandex)  
Boatneck  
Slim fit body  
Ankle length  
57"HPS)

**Ivory**  
**Navy**

**\$128**







SPRING IN MY STEP



**Emilia  
32ST2020**

Washed challis  
(100% viscose)  
Pintucking at front  
& back body  
Laceup at front  
Long sleeve with  
ruffles and  
smocked cuff

**Blue  
Red**

**\$88**



**Emilia  
32ST2020**

Washed challis  
(100% viscose)  
Pintucking at front  
& back body  
Laceup at front  
Long sleeve with  
ruffles and  
smocked cuff

**Blue  
Red**

**\$88**



**Emilia  
32ST202S**

Washed challis  
(100% viscose)  
Pintucking at front  
& back body  
Laceup at front  
Long sleeve with  
ruffles and  
smocked cuff

**Poppy  
White**

**\$78**



**Emilia  
32ST202S**

Washed challis  
(100% viscose)  
Pintucking at front  
& back body  
Laceup at front  
Long sleeve with  
ruffles and  
smocked cuff

**Poppy  
White**

**\$78**



**Maritza  
32ST2040**

Washed crepe  
de chine  
(100% silk)  
Enamel buttons  
at front  
Ruffle flounce sleeve  
High hip length  
with curved hem

**Blue  
Red**

**\$118**



**Maritza  
32ST2040**

Washed crepe  
de chine  
(100% silk)  
Enamel buttons  
at front  
Ruffle flounce sleeve  
High hip length  
with curved hem

**Blue  
Red**

**\$118**



**Larissa**  
**32ST6020**

Matte jersey  
(96% polyester/  
4% spandex)  
Mesh lining  
(95% nylon/  
8% spandex)  
High round neck  
Keyhole with button  
at back  
Flutter sleeve  
Slim a-line fit  
Above the  
knee length  
(35.5"HPS)

**Blue**  
**Red**

**\$88**



**Larissa**  
**32ST6020**

Matte jersey  
(96% polyester/  
4% spandex)  
Mesh lining  
(95% nylon/  
8% spandex)  
High round neck  
Keyhole with button  
at back  
Flutter sleeve  
Slim a-line fit  
Above the  
knee length  
(35.5"HPS)

**Blue**  
**Red**

**\$88**



**Darcey**  
**32ST6040**

Chiffon  
(100% polyester)  
Voile lining  
(100% cotton)  
Body is lined  
Ruffle at neck  
Puff sleeve ends  
above elbow  
Tiered skirt with slit  
at lower tiers  
Ankle length with  
slight hi/low  
(49" HPS at front,  
52" at back)

**Blue**  
**Red**

**\$128**

**Darcey**  
**32ST6040**

Chiffon  
(100% polyester)  
Voile lining  
(100% cotton)  
Body is lined  
Ruffle at neck  
Puff sleeve ends  
above elbow  
Tiered skirt with slit  
at lower tiers  
Ankle length with  
slight hi/low  
(49" HPS at front,  
52" at back)

**Blue**  
**Red**

**\$128**



**Matilde**  
**32ST6060**

Washed voile  
(100% cotton)  
Voile lining  
(100% cotton)  
Enamel buttons  
at bodice  
Invisible zip at back  
Balloon sleeve with  
eyelet trim  
Smocked cuff  
above elbow  
Slim fit through body  
Self tie belt at waist  
Voluminous tier  
at hem with  
eyelet trim  
Above the  
knee length  
(35.5" HPS)

**Blue**  
**Red**

**\$118**



**Matilde**  
**32ST6060**

Washed voile  
(100% cotton)  
Voile lining  
(100% cotton)  
Enamel buttons  
at bodice  
Invisible zip at back  
Balloon sleeve with  
eyelet trim  
Smocked cuff  
above elbow  
Slim fit through body  
Self tie belt at waist  
Voluminous tier  
at hem with  
eyelet trim  
Above the  
knee length  
(35.5" HPS)

**Blue**  
**Red**

**\$118**



**Matilde**  
**32ST606D**

Washed voile  
(100% cotton)  
Voile lining  
(100% cotton)  
Enamel buttons  
at bodice  
Invisible zip at back  
Balloon sleeve with  
eyelet trim  
Smocked cuff  
above elbow  
Slim fit through body  
Self tie belt at waist  
Voluminous tier  
at hem with  
eyelet trim  
Midi length  
(48" HPS)

**Blue**  
**Red**

**\$128**



**Matilde**  
**32ST606D**

Washed voile  
(100% cotton)  
Voile lining  
(100% cotton)  
Enamel buttons  
at bodice  
Invisible zip at back  
Balloon sleeve with  
eyelet trim  
Smocked cuff  
above elbow  
Slim fit through body  
Self tie belt at waist  
Voluminous tier  
at hem with  
eyelet trim  
Midi length  
(48" HPS)

**Blue**  
**Red**

**\$128**





SUNLIT STREETS





**Martina  
32UT2020**

Washed voile  
(100% cotton)  
Long voluminous  
sleeve with cuff  
Hip length with  
curved hem

**Blue  
Pink**

**\$88**



**Martina  
32UT2020**

Washed voile  
(100% cotton)  
Long voluminous  
sleeve with cuff  
Hip length with  
curved hem

**Blue  
Pink**

**\$88**



**Lauretta  
32UT2040**

Washed Charmeuse  
(25% silk/75% viscose)  
Enamel buttons at  
front placket  
Pleat at body  
under placket  
Balloon sleeve  
with smocked cuff  
High hip length  
with curved hem

**Blue  
Pink**

**\$98**



**Lauretta  
32UT2040**

Washed Charmeuse  
(25% silk/75% viscose)  
Enamel buttons at  
front placket  
Pleat at body  
under placket  
Balloon sleeve  
with smocked cuff  
High hip length  
with curved hem

**Blue  
Pink**

**\$98**



**Lauretta  
32UT204S**

Washed Charmeuse  
(25% silk/75% viscose)  
Enamel buttons at  
front placket  
Pleat at body  
under placket  
Balloon sleeve  
with smocked cuff  
High hip length  
with curved hem

**Navy  
White**

**\$78**



**Lauretta  
32UT204S**

Washed Charmeuse  
(25% silk/75% viscose)  
Enamel buttons at  
front placket  
Pleat at body  
under placket  
Balloon sleeve  
with smocked cuff  
High hip length  
with curved hem

**Navy  
White**

**\$78**



**Violette  
32UT2060**

Jersey  
(95% viscose/  
5% spandex)  
Ruffle & trim at  
armhole & keyhole  
Tie at front neck  
Slim easy fit  
through body  
High hip length  
with curved hem

**Blue  
Pink**

**\$68**



**Violette  
32UT2060**

Jersey  
(95% viscose/  
5% spandex)  
Ruffle & trim at  
armhole & keyhole  
Tie at front neck  
Slim easy fit  
through body  
High hip length  
with curved hem

**Blue  
Pink**

**\$68**



**Violette  
32UT206S**

Jersey  
(95% viscose/  
5% spandex)  
Ruffle & trim at  
armhole & keyhole  
Tie at front neck  
Slim easy fit  
through body  
High hip length  
with curved hem

**Navy  
Pink  
White**

**\$58**



**Violette**  
**32UT206S**

Jersey  
(95% viscose/  
5% spandex)  
Ruffle & trim at  
armhole & keyhole  
Tie at front neck  
Slim easy fit  
through body  
High hip length  
with curved hem

**Navy**  
**Pink**  
**White**

**\$58**



**Violette**  
**32UT206S**

Jersey  
(95% viscose/  
5% spandex)  
Ruffle & trim at  
armhole & keyhole  
Tie at front neck  
Slim easy fit  
through body  
High hip length  
with curved hem

**Navy**  
**Pink**  
**White**

**\$58**

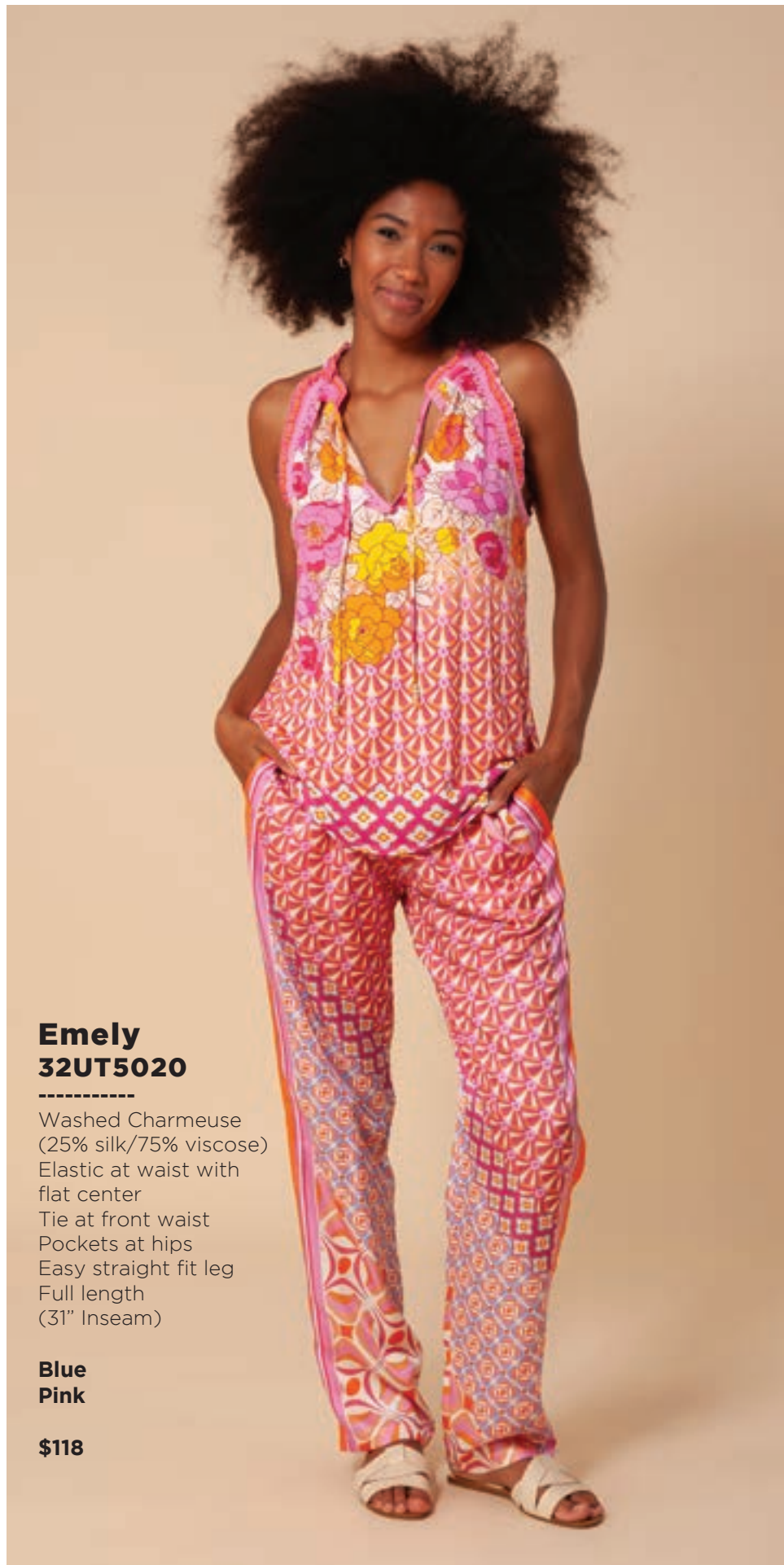


**Emely**  
**32UT5020**

Washed Charmeuse  
(25% silk/75% viscose)  
Elastic at waist with  
flat center  
Tie at front waist  
Pockets at hips  
Easy straight fit leg  
Full length  
(31" Inseam)

**Blue**  
**Pink**

**\$118**



**Emely**  
**32UT5020**

Washed Charmeuse  
(25% silk/75% viscose)  
Elastic at waist with  
flat center  
Tie at front waist  
Pockets at hips  
Easy straight fit leg  
Full length  
(31" Inseam)

**Blue**  
**Pink**

**\$118**



**Emely**  
**32UT502S**

Washed Charmeuse  
(25% silk/75% viscose)  
Elastic at waist with  
flat center  
Tie at front waist  
Pockets at hips  
Easy straight fit leg  
Full length  
(31" Inseam)

**Navy**

**\$98**



**Zantina**  
**32UT6020**

Poplin  
(100% cotton)  
Enamel buttons  
at front  
3/4 sleeve with tab  
Tier at skirt  
Above the knee  
length at front,  
longer at back  
(35" at front)

**Blue**  
**Pink**

**\$112**



**Zantina**  
**32UT6020**

Poplin  
(100% cotton)  
Enamel buttons  
at front  
3/4 sleeve with tab  
Tier at skirt  
Above the knee  
length at front,  
longer at back  
(35" at front)

**Blue**  
**Pink**

**\$112**



**Reina**  
**32UT6040**

Washed voile  
(100% cotton)  
Enamel buttons at  
front bodice  
Smocking at waist  
& cuff  
Balloon sleeve  
Tiered voluminous skirt  
Midi length  
(51" HPS)

**Blue**  
**Pink**

**\$118**



**Reina**  
**32UT6040**

Washed voile  
(100% cotton)  
Enamel buttons at  
front bodice  
Smocking at waist  
& cuff  
Balloon sleeve  
Tiered voluminous skirt  
Midi length  
(51" HPS)

**Blue**  
**Pink**

**\$118**



**Carenza  
32UT6060**

Matte jersey  
(96% polyester/  
4% spandex)  
Dropped shoulder  
Pleat at front under  
placket Pockets at hips  
Above the knee length  
(35.5" HPS)  
Deep hem added  
to adjust length

**\$88**

**32UT606B**

(BEADED)  
Hand beading  
at neckline

**\$98**

**Blue  
Pink**



**Carenza  
32UT6060**

Matte jersey  
(96% polyester/  
4% spandex)  
Dropped shoulder  
Pleat at front under  
placket Pockets at hips  
Above the knee length  
(35.5" HPS)  
Deep hem added  
to adjust length

**\$88**

**32UT606B**

(BEADED)  
Hand beading  
at neckline

**\$98**

**Blue  
Pink**

This book is a presentation of a selection of Hale Bob product and is correct at time of publication.

To view the entire collection of products including updates and additions. You can view product line sheets at [halebob.com](http://halebob.com) by logging into the "Merchant" section of our website.

Prices and products posted in this book are current at time of publication but are subject to change.

**Sales Director**

East Coast  
South East  
Puerto Rico  
Canada  
Majors

**Cathy Cooley**  
310-963-2463  
[cathy@halebob.com](mailto:cathy@halebob.com)

**Sales Executive**

West Coast  
Mexico

**Maria Garcia**  
323-394-1739  
[mariag@halebob.com](mailto:mariag@halebob.com)

**For Marketing & Press Inquiries:**

Lissette Renteria  
[lissette@halebob.com](mailto:lissette@halebob.com)

**HALE BOB**  
LOS ANGELES

