



HALE BOB

LOS ANGELES

SPRING 2023



HALE BOB

LOS ANGELES

SEASON 1



LIKE MAGIC

Ilaria
31AG2020

Lightweight washed
linen (100% linen)
Sheer crochet insert
at voluminous sleeve
Hip length with
curved hem

Ivory
Pink



Ilaria
31AG202S

Lightweight washed
linen (100% linen)
Sheer crochet insert
at voluminous sleeve
Hip length with
curved hem

Ivory
Navy



Ilaria
31AG202S

Lightweight washed
linen (100% linen)
Sheer crochet insert
at voluminous sleeve
Hip length with
curved hem

Ivory
Navy





**Hartigan
31AG2040**

Jersey (95% viscose /5% spandex)
Voluminous pleated sleeve with draped band
Easy fit through body
High hip length

**Ivory
Pink**



**Hartigan
31AG2040**

Jersey (95% viscose /5% spandex)
Voluminous pleated sleeve with draped band
Easy fit through body
High hip length

**Ivory
Pink**



**Mireia
31AG2060**

Washed crepe de chine (100% silk)
Voluminous sleeve with smocked cuff
Enamel buttons at front body
Hip length

**Ivory
Pink**

Mireia
31AG2060

Washed crepe de chine
(100% silk)
Voluminous sleeve
with smocked cuff
Enamel buttons at
front body
Hip length

Ivory
Pink



Bronwyn
31AG5010

Lightweight washed
linen (100% linen)
Fully lined
(100% cotton)
Flat front waist with
smocked back
Tie at waist
Full easy fit straight leg
Pockets at hips
31" Inseam

Ivory
Pink



Bronwyn
31AG5010

Lightweight washed
linen (100% linen)
Fully lined
(100% cotton)
Flat front waist with
smocked back
Tie at waist
Full easy fit straight leg
Pockets at hips
31" Inseam

Ivory
Pink





**Bronwyn
31AG501S**

Lightweight washed
linen (100% linen)
Fully lined
(100% cotton)
Flat front waist with
smocked back
Tie at waist
Full easy fit straight leg
Pockets at hips
31" Inseam

**Ivory
Pink**



**Bronwyn
31AG501S**

Lightweight washed
linen (100% linen)
Fully lined
(100% cotton)
Flat front waist with
smocked back
Tie at waist
Full easy fit straight leg
Pockets at hips
31" Inseam

**Ivory
Pink**



**Garland
31AG6020**

Washed charmeuse
(Viscose/Rayon)
Long sleeve with
smocked cuff
Elastic with blouson
at low hip
Tiered swingy skirt
Above the knee length
(35" HPS)

**Ivory
Pink**

Garland
31AG6020

Washed charmeuse
(Viscose/Rayon)
Long sleeve with
smocked cuff
Elastic with blouson
at low hip
Tiered swingy skirt
Above the knee length
(35" HPS)

**Ivory
Pink**



Daisie
31AG6040

Lightweight washed
linen (100% linen)
Fully lined (100%
cotton)
Enamel buttons at
front body
Large button
detailing
Covered belt
included
Dropped sleeve
Above the knee
length: 35.5" HPS

**Ivory
Pink**



Daisie
31AG6040

Lightweight washed
linen (100% linen)
Fully lined (100%
cotton)
Enamel buttons at
front body
Large button
detailing
Covered belt
included
Dropped sleeve
Above the knee
length: 35.5" HPS

**Ivory
Pink**



Daisie
31AG604D

Lightweight washed
linen (100% linen)
Fully lined (100%
cotton)
Enamel buttons at
front body
Large button
detailing
Covered belt
included
Dropped sleeve
Midi length: 44" HPS

Ivory
Pink



Daisie
31AG604D

Lightweight washed
linen (100% linen)
Fully lined (100%
cotton)
Enamel buttons at
front body
Large button
detailing
Covered belt
included
Dropped sleeve
Midi length: 44" HPS

Ivory
Pink



Feya
31AG6060

Crepe (100% Vis-
cose)
Raglan sleeve with
ruffle inserts
Enamel buttons at
top front bust
Self tie belt at waist
Gussets at skirt
create volume
Maxi length (59"HPS)

Ivory
Pink



Feya
31AG6060

Crepe (100% Viscose)
Raglan sleeve with ruffle inserts
Enamel buttons at top front bust
Self tie belt at waist
Gussets at skirt create volume
Maxi length (59" HPS)

Ivory Pink



Garnet
31AG6080

Matte jersey (96% polyester/4% spandex)
Mesh lining (95% nylon/8% spandex)
Pleat at CF under placket
Voluminous sleeve with smocked cuff above elbow
Pockets at hips
Above the knee length (35.5" HPS)
Deep hem added to adjust length

31AG608B
(BEADED)

Hand beading on neckline

Ivory Pink



Garnet
31AG6080

Matte jersey (96% polyester/4% spandex)
Mesh lining (95% nylon/8% spandex)
Pleat at CF under placket
Voluminous sleeve with smocked cuff above elbow
Pockets at hips
Above the knee length (35.5" HPS)
Deep hem added to adjust length

31AG608B
(BEADED)

Hand beading on neckline

Ivory Pink



Onyx
31AG6090

Matte jersey
(96% polyester/4% spandex)
Mesh lining
(95% nylon/8% spandex)
Pleat at CF
under placket
Voluminous sleeve
with smocked
cuff above elbow
Pockets at hips
Above the knee
length (42" HPS)
Deep hem added
to adjust length

31AG609B
(BEADED)

Hand beading
on neckline

Ivory
Pink



Onyx
31AG6090

Matte jersey
(96% polyester/4% spandex)
Mesh lining
(95% nylon/8% spandex)
Pleat at CF
under placket
Voluminous sleeve with
smocked
cuff above elbow
Pockets at hips
Above the knee
length (42" HPS)
Deep hem
added to adjust length

31AG609B
(BEADED)

Hand beading
on neckline

Ivory
Pink



Maluna
31AG9410

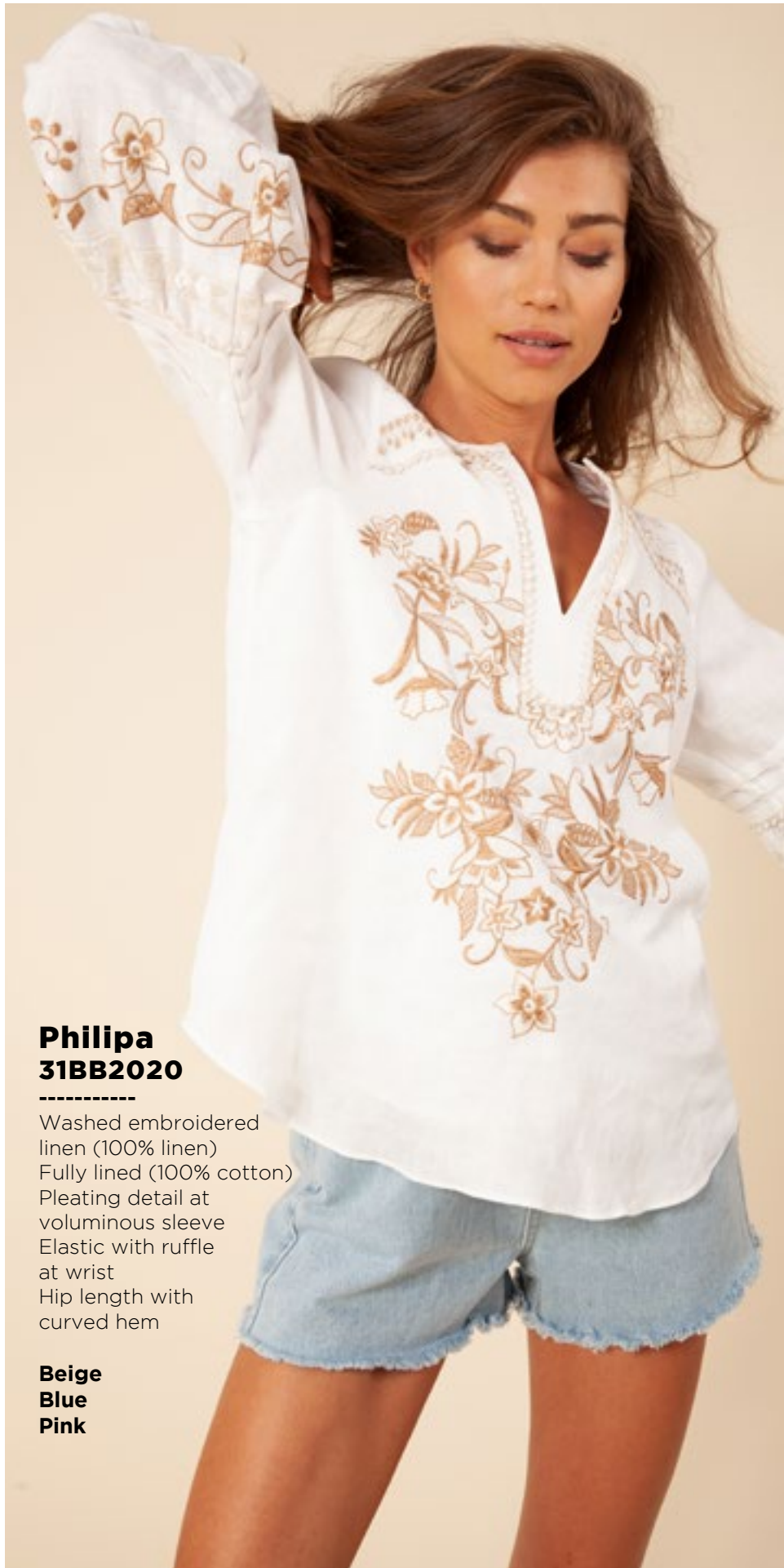
Jute tote
Cotton dipped
macrame straps
Full lined with
cotton voile
Interior pocket

Pink





BEST BUDDS



**Philipa
31BB2020**

Washed embroidered
linen (100% linen)
Fully lined (100% cotton)
Pleating detail at
voluminous sleeve
Elastic with ruffle
at wrist
Hip length with
curved hem

**Beige
Blue
Pink**



**Philipa
31BB2020**

Washed embroidered
linen (100% linen)
Fully lined (100% cotton)
Pleating detail at
voluminous sleeve
Elastic with ruffle
at wrist
Hip length with
curved hem

**Beige
Blue
Pink**



**Philipa
31BB2020**

Washed embroidered
linen (100% linen)
Fully lined (100% cotton)
Pleating detail at
voluminous sleeve
Elastic with ruffle
at wrist
Hip length with
curved hem

**Beige
Blue
Pink**



**Yara
31BB2040**

Embroidered crepe
(55% viscose/45% rayon)
Pintucking at front with
laceup at neck
Pleated balloon sleeve
with smocked cuff
above elbow
Hip length

**Beige
Blue
Pink**



**Yara
31BB2040**

Embroidered crepe
(55% viscose/45% rayon)
Pintucking at front with
laceup at neck
Pleated balloon sleeve
with smocked cuff
above elbow
Hip length

**Beige
Blue
Pink**



**Yara
31BB2040**

Embroidered crepe
(55% viscose/45% rayon)
Pintucking at front with
laceup at neck
Pleated balloon sleeve
with smocked cuff
above elbow
Hip length

**Beige
Blue
Pink**



Venize
31BB6020

Washed embroidered
linen (100% linen)
Fully lined (100% cotton)
Buttons at front body
Tiered voluminous body
Long sleeve with
smocked cuff
Trim & eyelet detailing
Above the knee length
(35.5" HPS)

Beige
Blue
Pink



Venize
31BB6020

Washed embroidered
linen (100% linen)
Fully lined (100% cotton)
Buttons at front body
Tiered voluminous body
Long sleeve with
smocked cuff
Trim & eyelet detailing
Above the knee length
(35.5" HPS)

Beige
Blue
Pink



**Stephani
31BB6040**

Embroidered crepe
(55% viscose/45% rayon)
Elastic under bust
Short balloon sleeve
with smocked cuff
Ruffle, trim, and
eyelet detailing
Tiered asymmetrical
voluminous skirt
Pockets at hips
Maxi length (59" HPS)

**Beige
Blue
Pink**



**Stephani
31BB6040**

Embroidered crepe
(55% viscose/45% rayon)
Elastic under bust
Short balloon sleeve
with smocked cuff
Ruffle, trim, and
eyelet detailing
Tiered asymmetrical
voluminous skirt
Pockets at hips
Maxi length (59" HPS)

**Beige
Blue
Pink**



**Stephani
31BB6040**

Embroidered crepe
(55% viscose/45% rayon)
Elastic under bust
Short balloon sleeve
with smocked cuff
Ruffle, trim, and
eyelet detailing
Tiered asymmetrical
voluminous skirt
Pockets at hips
Maxi length (59" HPS)

**Beige
Blue
Pink**





FLOAT LIKE A BUTTERFLY



**Donna
31LY2020**

Washed georgette
(100% silk)
Jersey cami included
(95% viscose
/5% spandex)
Ruffle at neckline
with tie
Voluminous sleeve
with ruffles &
smocked cuff
Hip length with
curved hem

31LY202B

(BEADED)
Hand beading
on neckline

**Green
Pink**



**Donna
31LY2020**

Washed georgette
(100% silk)
Jersey cami included
(95% viscose
/5% spandex)
Ruffle at neckline
with tie
Voluminous sleeve
with ruffles &
smocked cuff
Hip length with
curved hem

31LY202B

(BEADED)
Hand beading
on neckline

**Green
Pink**



**Melody
31LY2040**

Washed georgette
(100% silk)
Double georgette lining
(100% polyester)
Elastic with ruffle at
neck can be worn on
or off the shoulder
Flutter sleeve
with ruffle edge
High hip length
with curved hem

**Green
Pink**

Melody
31LY2040

Washed georgette
(100% silk)
Double georgette lining
(100% polyester)
Elastic with ruffle at
neck can be worn on
or off the shoulder
Flutter sleeve
with ruffle edge
High hip length
with curved hem

Green
Pink



Rachael
31LY6020

Stretch Jersey
(95% viscose
/5% spandex)
Elastic under bust
with tie at waist
3/4 length balloon
sleeve with elastic
at the opening
Gussets at skirt
create volume
Above the knee length
(35.5" HPS)

Green
Pink



Rachael
31LY6020

Stretch Jersey
(95% viscose
/5% spandex)
Elastic under bust
with tie at waist
3/4 length balloon
sleeve with elastic
at the opening
Gussets at skirt
create volume
Above the knee length
(35.5" HPS)

Green
Pink



Honey
31LY6040

Washed georgette
(100% silk)
Double georgette lining
(100% polyester)
V-neck with tie
Flutter sleeve with
ruffle at opening
Drop waist with elastic
blouson at low hip
Tiered ruffle swingy skirt
Curved hem
Mid-thigh length
(34.5" HPS)

Green
Pink



Honey
31LY6040

Washed georgette
(100% silk)
Double georgette lining
(100% polyester)
V-neck with tie
Flutter sleeve with
ruffle at opening
Drop waist with elastic
blouson at low hip
Tiered ruffle swingy skirt
Curved hem
Mid-thigh length
(34.5" HPS)

Green
Pink



Honey
31LY604D

Washed georgette
(100% silk)
Double georgette lining
(100% polyester)
V-neck with tie
Flutter sleeve with
ruffle at opening
Drop waist with elastic
blouson at low hip
Tiered ruffle swingy skirt
Curved hem
Midi length
(47" HPS)

Green
Pink



Honey
31LY604D

Washed georgette
(100% silk)
Double georgette lining
(100% polyester)
V-neck with tie
Flutter sleeve with
ruffle at opening
Drop waist with elastic
blouson at low hip
Tiered ruffle swingy skirt
Curved hem
Midi length
(47" HPS)

Green
Pink







RAINBOW CONNECTION



**Trinia
31NC2020**

Washed voile
(100% cotton)
Enamel buttons at front
Voluminous sleeve
with smocked cuff
Low hip length
with slits at sides

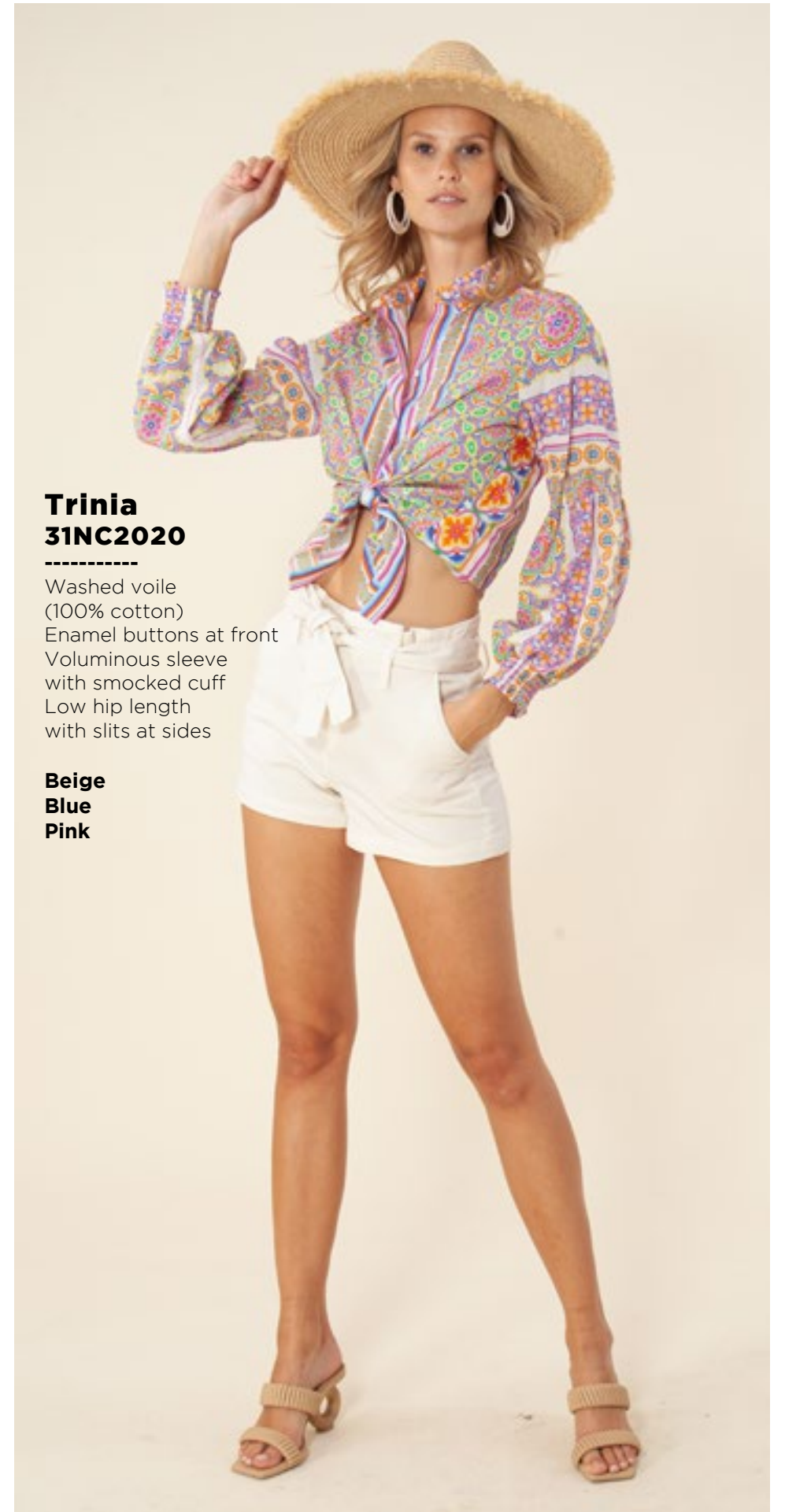
**Beige
Blue
Pink**



**Trinia
31NC2020**

Washed voile
(100% cotton)
Enamel buttons at front
Voluminous sleeve
with smocked cuff
Low hip length
with slits at sides

**Beige
Blue
Pink**



**Trinia
31NC2020**

Washed voile
(100% cotton)
Enamel buttons at front
Voluminous sleeve
with smocked cuff
Low hip length
with slits at sides

**Beige
Blue
Pink**

Catrina
31NC2040

Washed voile
(100% cotton)
Voile lining at body
(100% cotton)
Keyhole at front neck
Double tiered
flutter sleeve
Hip length with
curved hem

Beige
Blue
Pink



Catrina
31NC2040

Washed voile
(100% cotton)
Voile lining at body
(100% cotton)
Keyhole at front neck
Double tiered
flutter sleeve
Hip length with
curved hem

Beige
Blue
Pink



Catrina
31NC2040

Washed voile
(100% cotton)
Voile lining at body
(100% cotton)
Keyhole at front neck
Double tiered
flutter sleeve
Hip length with
curved hem

Beige
Blue
Pink



**Jessamy
31NC6020**

Washed voile
100% cotton)
Voile lining at body
(100% cotton)
Smocked waistband
Balloon sleeve with
smocked
cuff above elbow
Tiered voluminous
skirt
Midi length
(47"HPS)

**Beige
Blue
Pink**



**Jessamy
31NC6020**

Washed voile
100% cotton)
Voile lining at body
(100% cotton)
Smocked waistband
Balloon sleeve with
smocked
cuff above elbow
Tiered voluminous skirt
Midi length
(47"HPS)

**Beige
Blue
Pink**



**Jessamy
31NC6020**

Washed voile
100% cotton)
Voile lining at body
(100% cotton)
Smocked waistband
Balloon sleeve with
smocked
cuff above elbow
Tiered voluminous skirt
Midi length
(47"HPS)

**Beige
Blue
Pink**





**Elsbeth
31NC6040**

Washed voile
(100% cotton)
Voile lining at body
(100% cotton)
Easy fit, slim
through rib cage
Tiered, swingy fit
at skirt
3/4 full sleeve with
smocked cuff
Above the knee length
(35.5" HPS)

**Beige
Blue
Pink**



**Elsbeth
31NC6040**

Washed voile
(100% cotton)
Voile lining at body
(100% cotton)
Easy fit, slim
through rib cage
Tiered, swingy fit
at skirt
3/4 full sleeve with
smocked cuff
Above the knee length
(35.5" HPS)

**Beige
Blue
Pink**



**Elsbeth
31NC6040**

Washed voile
(100% cotton)
Voile lining at body
(100% cotton)
Easy fit, slim
through rib cage
Tiered, swingy fit
at skirt
3/4 full sleeve with
smocked cuff
Above the knee length
(35.5" HPS)

**Beige
Blue
Pink**



**Elspeth
31NC604M**

Washed voile
(100% cotton)
Voile lining at body
(100% cotton)
Easy fit, slim
through rib cage
Tiered, swingy fit
at skirt
3/4 full sleeve with
smocked cuff
Maxi length
(58" HPS)

**Beige
Blue
Pink**



**Elspeth
31NC604M**

Washed voile
(100% cotton)
Voile lining at body
(100% cotton)
Easy fit, slim
through rib cage
Tiered, swingy fit
at skirt
3/4 full sleeve with
smocked cuff
Maxi length
(58" HPS)

**Beige
Blue
Pink**



**Elspeth
31NC604M**

Washed voile
(100% cotton)
Voile lining at body
(100% cotton)
Easy fit, slim
through rib cage
Tiered, swingy fit
at skirt
3/4 full sleeve with
smocked cuff
Maxi length
(58" HPS)

**Beige
Blue
Pink**



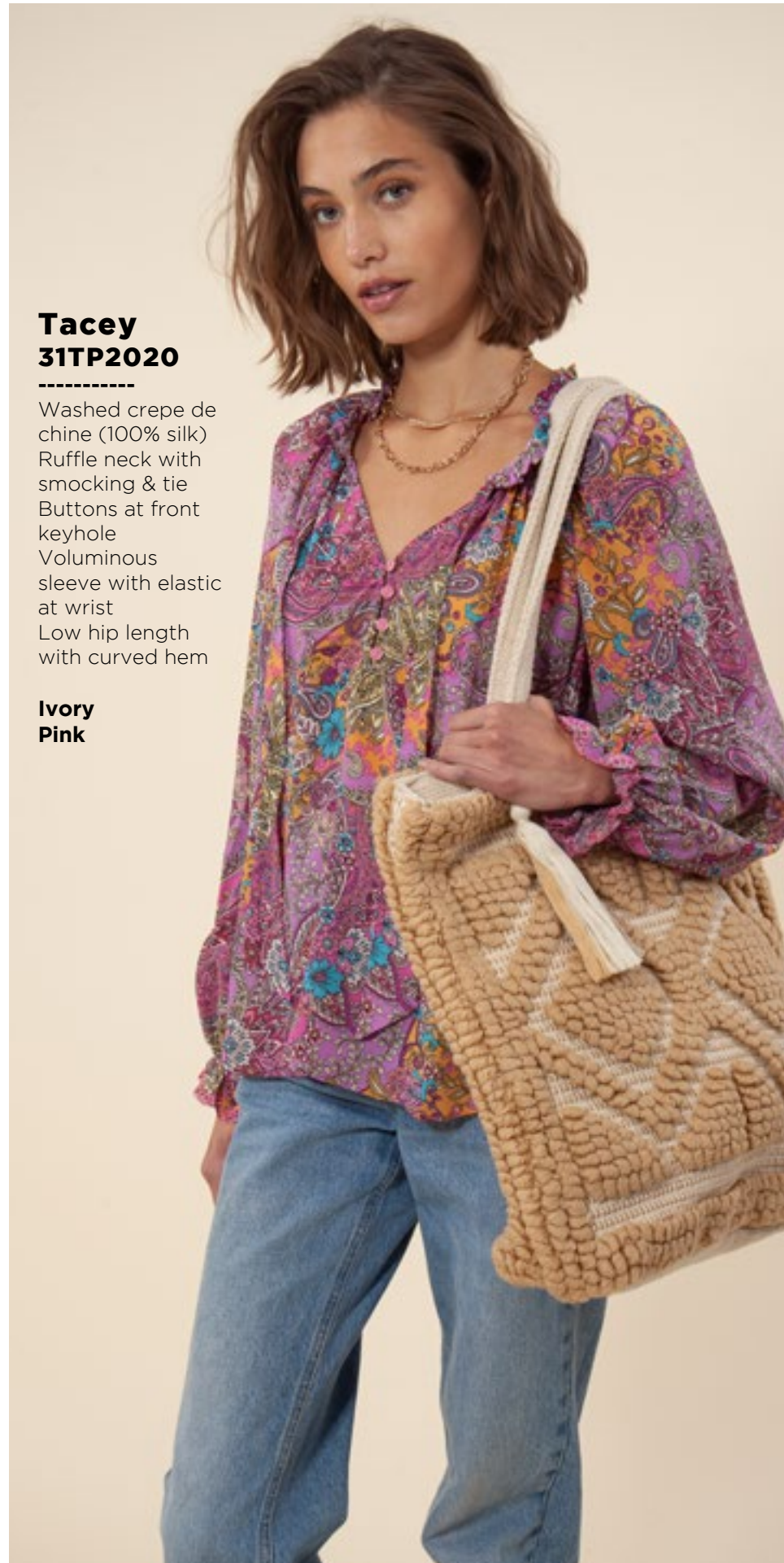
LEAF AND PETAL



**Tacey
31TP2020**

Washed crepe de chine (100% silk)
Ruffle neck with smocking & tie
Buttons at front keyhole
Voluminous sleeve with elastic at wrist
Low hip length with curved hem

**Ivory
Pink**



**Tacey
31TP2020**

Washed crepe de chine (100% silk)
Ruffle neck with smocking & tie
Buttons at front keyhole
Voluminous sleeve with elastic at wrist
Low hip length with curved hem

**Ivory
Pink**



**Aruna
31TP2040**

Jersey (95% viscose/5% spandex)
Smocking detail at yoke
3/4 sleeve with smocked cuff
High hip length with curved hem

**Ivory
Pink**

Aruna
31TP2040

Jersey (95% vis-
cose/5% spandex)
Smocking detail
at yoke
3/4 sleeve with
smocked cuff
High hip length
with curved hem

Ivory
Pink



Oriena
31TP5010

Washed poplin (100% cotton)
Romper with
front closure
Large enamel but-
tons at front body
Balloon short sleeve
with smocked cuff
High waist shorts
with pleating
Pockets at hips
Self tie belt at waist
3" Inseam with cuff

Ivory
Pink



Oriena
31TP5010

Washed poplin (100%
cotton)
Romper with
front closure
Large enamel buttons
at front body
Balloon short sleeve
with smocked cuff
High waist shorts
with pleating
Pockets at hips
Self tie belt at waist
3" Inseam with cuff

Ivory
Pink





Eola
31TP6020

Washed voile
(100% cotton)
Voile lining at body
(100% cotton)
Smocked waistband
Balloon sleeve
with eyelet trim
3 tiered skirt with
eyelet edges
Above the knee
length (35.5" HPS)

Ivory
Pink



Eola
31TP6020

Washed voile
(100% cotton)
Voile lining at body
(100% cotton)
Smocked waistband
Balloon sleeve
with eyelet trim
3 tiered skirt with
eyelet edges
Above the knee length
(35.5" HPS)

Ivory
Pink



Kestrel
31TP6040

Chiffon
(100% polyester)
Smocked bodice
with tie
Tiered voluminous
skirt with slit
at lower tiers
Ankle length with
slight hi/low
(49" HPS at front,
52" at back)

Ivory
Pink

Kestrel
31TP6040

Chiffon
(100% polyester)
Smocked bodice
with tie
Tiered voluminous
skirt with slit
at lower tiers
Ankle length with
slight hi/low
(49" HPS at front,
52" at back)

Ivory
Pink



Allegra
31TP6080

Matte jersey
(96% polyester
/4% spandex)
Mesh lining
(95% nylon
/8% spandex)
Pleat at CF under
placket
Voluminous sleeve
with smocked
cuff above elbow
Pockets at hips
Above the knee length
(35.5" HPS)
Deep hem added to
adjust length

31TP608B
(BEADED)

Hand beading
on neckline

Ivory
Pink



Allegra
31TP6080

Matte jersey
(96% polyester
/4% spandex)
Mesh lining
(95% nylon
/8% spandex)
Pleat at CF under
placket
Voluminous sleeve
with smocked
cuff above elbow
Pockets at hips
Above the knee length
(35.5" HPS)
Deep hem added to
adjust length

31TP608B
(BEADED)

Hand beading
on neckline

Ivory
Pink



Sonata
31TP6090

Matte jersey
(96% polyester
/4% spandex)
Mesh lining
(95% nylon
/8% spandex)
Pleat at CF under
placket
Voluminous
sleeve with
smocked
cuff above elbow
Pockets at hips
Above the knee
length (42" HPS)
Deep hem added
to adjust length

31TP609B

(BEADED)

Hand beading
on neckline

**Ivory
Pink**



Sonata
31TP6090

Matte jersey
(96% polyester
/4% spandex)
Mesh lining
(95% nylon
/8% spandex)
Pleat at CF under
placket
Voluminous
sleeve with
smocked
cuff above elbow
Pockets at hips
Above the knee
length (42" HPS)
Deep hem added
to adjust length

31TP609B

(BEADED)

Hand beading
on neckline

**Ivory
Pink**





SLICE OF SPRING



Mai
31US2020

Eyelet embroidered
voile (100% cotton)
Voile lining (100%
cotton)
Elastic & ruffle at top
edge can be worn on
or off shoulder

Blue
Pink



Mai
31US2020

Eyelet embroidered
voile (100% cotton)
Voile lining (100%
cotton)
Elastic & ruffle at top
edge can be worn on
or off shoulder

Blue
Pink



Mai
31US202S

Eyelet embroidered
voile (100% cotton)
Voile lining (100%
cotton)
Elastic & ruffle at top
edge can be worn on
or off shoulder

Pink
White

Mai
31US202S

Eyelet embroidered
voile (100% cotton)
Voile lining (100%
cotton)
Elastic & ruffle at top
edge can be worn on
or off shoulder

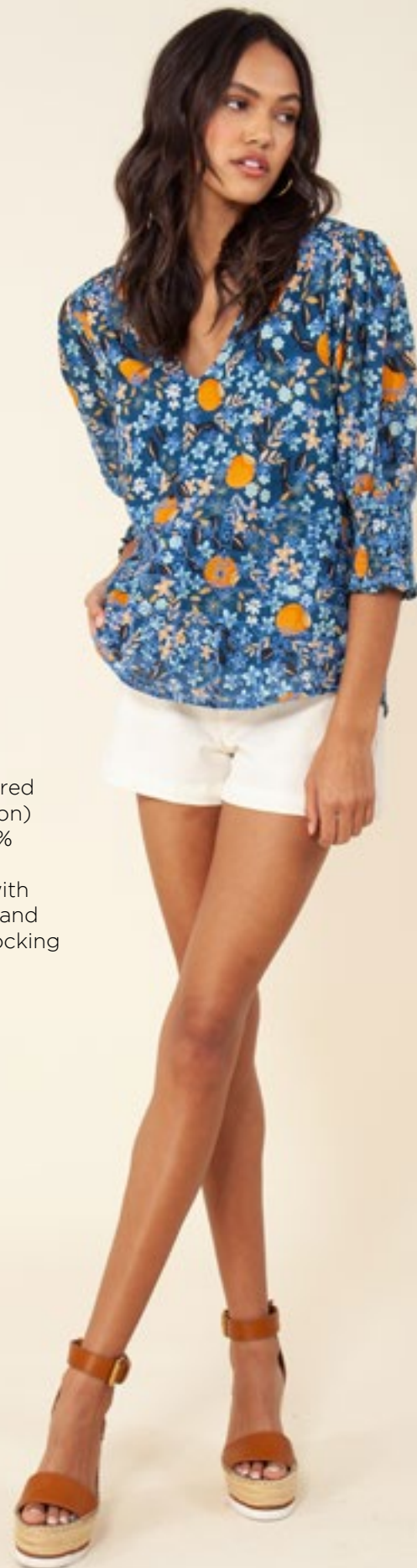
Pink
White



Maika
31US2040

Eyelet embroidered
voile (100% cotton)
Voile lining (100%
cotton)
Balloon sleeve with
wide smocked band
V-neck with smocking
at shoulder

Blue
Pink



Maika
31US2040

Eyelet embroidered
voile (100% cotton)
Voile lining (100%
cotton)
Balloon sleeve with
wide smocked band
V-neck with smocking
at shoulder

Blue
Pink





**Maika
31US204S**

Eyelet embroidered
voile (100% cotton)
Voile lining (100%
cotton)
Balloon sleeve with
wide smocked band
V-neck with smock-
ing at shoulder

**Pink
White**



**Maika
31US204S**

Eyelet embroidered
voile (100% cotton)
Voile lining (100%
cotton)
Balloon sleeve with
wide smocked band
V-neck with smock-
ing at shoulder

**Pink
White**



**Amaryllis
31US6020**

Eyelet embroidered voile
(100% cotton)
Voile lining (100% cotton)
Voluminous tiered body
7/8 length sleeve with
ruffle
Above the knee length
(35.5" HPS)

**Blue
Pink**



Amaryllis
31US6020

Eyelet embroidered
voile
(100% cotton)
Voile lining (100%
cotton) Voluminous
tiered body
7/8 length sleeve
with ruffle
Above the knee
length
(35.5" HPS)

Blue
Pink



Amaryllis
31US602S

Eyelet embroidered voile
(100% cotton)
Voile lining (100% cotton)
Voluminous tiered body
7/8 length sleeve with
ruffle
Above the knee length
(35.5" HPS)

Blue
Pink



Amaryllis
31US602S

Eyelet embroidered voile
(100% cotton)
Voile lining (100% cotton)
Voluminous tiered body
7/8 length sleeve with
ruffle
Above the knee length
(35.5" HPS)

Blue
Pink

Sunny
31US6040

Slinky jersey
95% viscose/5% span)
Draped detail at front
Short sleeve with shirring
Above the knee length
(35.5" HPS)

Blue
Pink



Sunny
31US6040

Slinky jersey
95% viscose/5% span)
Draped detail at front
Short sleeve with shirring
Above the knee length
(35.5" HPS)

Blue
Pink





Joplin
31US6060

Crepe (100% viscose)
Elastic under bust
3/4 voluminous sleeve
Elastic at shoulder & wrist
Tiered swingy skirt
Maxi length
(54" HPS)

Blue
Pink



Joplin
31US6060

Crepe (100% viscose)
Elastic under bust
3/4 voluminous sleeve
Elastic at shoulder & wrist
Tiered swingy skirt
Maxi length
(54" HPS)

Blue
Pink





HALE BOB

LOS ANGELES

SEASON 2



SUN AND SHADE

**Lanthe
32AN2020**

Jersey
(95% viscose/
5% spandex)
Smocked yoke &
ruffle detail
Sleeve above elbow
Easy fit body
High hip length
with curved hem

**Blue
Ivory
Pink**



**Lanthe
32AN2020**

Jersey
(95% viscose/
5% spandex)
Smocked yoke &
ruffle detail
Sleeve above elbow
Easy fit body
High hip length
with curved hem

**Blue
Ivory
Pink**



**Lanthe
32AN2020**

Jersey
(95% viscose/
5% spandex)
Smocked yoke &
ruffle detail
Sleeve above elbow
Easy fit body
High hip length
with curved hem

**Blue
Ivory
Pink**





Lanthe
32AN202S

Jersey
(95% viscose/
5% spandex)
Smocked yoke &
ruffle detail
Sleeve above
elbow
Easy fit body
High hip length
with curved hem

Navy
Pink
White



Gloria
32AN2040

Washed crepe de chine
(100% silk)
Enamel buttons
at front
Voluminous sleeve
with cuff
Low hip length
with slits at sides

Blue
Ivory
Pink



Gloria
32AN2040

Washed crepe de chine (100% silk)
Enamel buttons
at front
Voluminous sleeve
with cuff
Low hip length
with slits at sides

Blue
Ivory
Pink



Gloria
32AN2040

Washed crepe de chine (100% silk)
Enamel buttons at front
Voluminous sleeve with cuff
Low hip length with slits at sides

Blue
Ivory
Pink



Amity
32AN2060

Washed georgette (100% rayon)
Jersey cami included (95% viscose/5% spandex)
Buttons at front placket, ties at neck
Long sleeve with smocked cuff.
Hip length

Blue
Ivory
Pink



Amity
32AN2060

Washed georgette (100% rayon)
Jersey cami included (95% viscose/5% spandex)
Buttons at front placket, ties at neck
Long sleeve with smocked cuff.
Hip length

Blue
Ivory
Pink



Amity
32AN2060

Washed georgette
(100% rayon)
Jersey cami included
(95% viscose/5% spandex)
Buttons at front
placket, ties at neck
Long sleeve with
smocked cuff.
Hip length

Blue
Ivory
Pink



Adaline
32AN4020

Jersey
(95% viscose/
5% spandex)
Top skirt with lining
Elastic at waist
Draped front
Front slit closes
at mid-thigh
Ankle length

Blue
Ivory
Pink



Adaline
32AN4020

Jersey
(95% viscose/
5% spandex)
Top skirt with lining
Elastic at waist
Draped front
Front slit closes
at mid-thigh
Ankle length

Blue
Ivory
Pink



**Adaline
32AN4020**

Jersey
(95% viscose/
5% spandex)
Top skirt with lining
Elastic at waist
Draped front
Front slit closes
at mid-thigh
Ankle length

**Blue
Ivory
Pink**



**Adaline
32AN402S**

Jersey
(95% viscose/
5% spandex)
Top skirt with lining
Elastic at waist
Draped front
Front slit closes
at mid-thigh
Ankle length

White



**Angelica
32AN6020**

Washed challis
(100% viscose)
Pintucking at front
& back body
Laceup front
Ruffle flounce sleeve
Trim at sleeve & hem
Swingy easy fit
Above the knee length
(35.5" HPS)

**Blue
Ivory
Pink**



**Angelica
32AN6020**

Washed challis
(100% viscose)
Pintucking at front
& back body
Laceup front
Ruffle flounce sleeve
Trim at sleeve & hem
Swingy easy fit
Above the knee length
(35.5" HPS)

**Blue
Ivory
Pink**



**Angelica
32AN6020**

Washed challis
(100% viscose)
Pintucking at front
& back body
Laceup front
Ruffle flounce sleeve
Trim at sleeve & hem
Swingy easy fit
Above the knee length
(35.5" HPS)

**Blue
Ivory
Pink**



**Mirabel
32AN6040**

Matte jersey
(96% polyester/
4% spandex)
V-neck at front
Pockets at hips
Bell sleeve
Easy a-line body
Above the
knee length
(35.5" HPS)

**Blue
Ivory
Pink**



**Mirabel
32AN6040**

Matte jersey
(96% polyester/
4% spandex)
V-neck at front
Pockets at hips
Bell sleeve
Easy a-line body
Above the
knee length
(35.5" HPS)

**Blue
Ivory
Pink**



**Mirabel
32AN6040**

Matte jersey
(96% polyester/
4% spandex)
V-neck at front
Pockets at hips
Bell sleeve
Easy a-line body
Above the
knee length
(35.5" HPS)

**Blue
Ivory
Pink**



**Goya
32AN6060**

Washed challis
(100% viscose)
Enamel buttons
detail at front
Tie at front waist
Balloon sleeve
with smocking
Voluminous
gusset skirt
Invisible zip at back
Smocked panel at
back bodice for
comfortable slim fit
Maxi length
(59" HPS)

**Blue
Ivory
Pink**

Goya
32AN6060

Washed challis
(100% viscose)
Enamel buttons
detail at front
Tie at front waist
Balloon sleeve
with smocking
Voluminous
gusset skirt
Invisible zip at back
Smocked panel at
back bodice for
comfortable slim fit
Maxi length
(59" HPS)

Blue
Ivory
Pink



Goya
32AN6060

Washed challis
(100% viscose)
Enamel buttons
detail at front
Tie at front waist
Balloon sleeve
with smocking
Voluminous
gusset skirt
Invisible zip at back
Smocked panel at
back bodice for
comfortable slim fit
Maxi length
(59" HPS)

Blue
Ivory
Pink





HOPE BLOOMS



Aolani
32BL2020

Washed crepe de chine
(100% silk)
Enamel buttons at front
7/8 sleeve with
herring at bottom

Pink



Finualla
32BL2040

Washed Voile (30%
silk/70% cotton)
Jersey cami lining (95%
viscose/5% spandex)
Ruffle & tie at neckline
Deep keyhole
with buttons
Long sleeve
with eyelet trim
at elastic cuff
Low hip length
with curved hem

Beige
Pink



Finualla
32BL2040

Washed Voile
(30% silk/70%
cotton)
Jersey cami lining
(95% viscose/5%
spandex)
Ruffle & tie at
neckline
Deep keyhole
with buttons
Long sleeve with
eyelet trim at
elastic cuff
Low hip length
with curved hem

Beige
Pink

Oba
32BL5020

Washed poplin
(100% cotton)
Large enamel
buttons at front
High waist shorts
with pleating
Pockets at hips
Self tie belt at waist
3" Inseam with cuff

Beige
Pink



Oba
32BL502S

Washed poplin
(100% cotton)
Large enamel
buttons at front
High waist shorts
with pleating
Pockets at hips
Self tie belt at waist
3" Inseam with cuff

Ivory
Navy



Oba
32BL502S

Washed poplin
(100% cotton)
Large enamel
buttons at front
High waist shorts
with pleating
Pockets at hips
Self tie belt at waist
3" Inseam with cuff

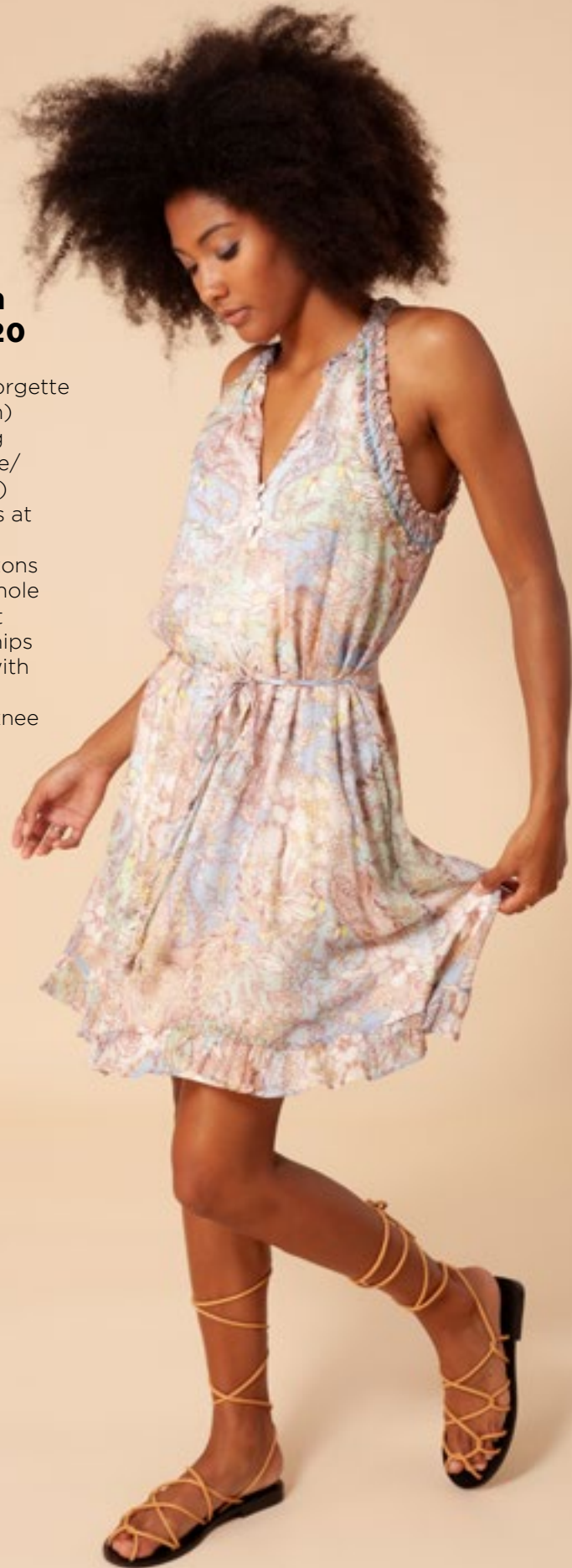
Ivory
Navy



Melania
32BL6020

Washed georgette
(100% rayon)
Jersey lining
(95% viscose/
5% spandex)
Ruffle bands at
armhole
Enamel buttons
at front keyhole
Belt at waist
Pockets at hips
Swingy fit with
ruffle hem
Above the knee
length
(35.5" HPS)

Beige
Pink



Melania
32BL6020

Washed georgette
(100% rayon)
Jersey lining
(95% viscose/
5% spandex)
Ruffle bands at
armhole
Enamel buttons
at front keyhole
Belt at waist
Pockets at hips
Swingy fit with
ruffle hem
Above the knee
length
(35.5" HPS)

Beige
Pink



Desirae
32BL6040

Washed poplin
(100% cotton)
Enamel buttons at
front body
(faux closure)
Invisible zipper
at back
Slim fit with
flared skirt
Bell sleeves
Trim edge detailing
Pockets at hips
Ankle length
(50" HPS)

Beige
Pink



Desirae
32BL6040

Washed poplin
(100% cotton)
Enamel buttons at
front body
(faux closure)
Invisible zipper
at back
Slim fit with
flared skirt
Bell sleeves
Trim edge detailing
Pockets at hips
Ankle length
(50" HPS)

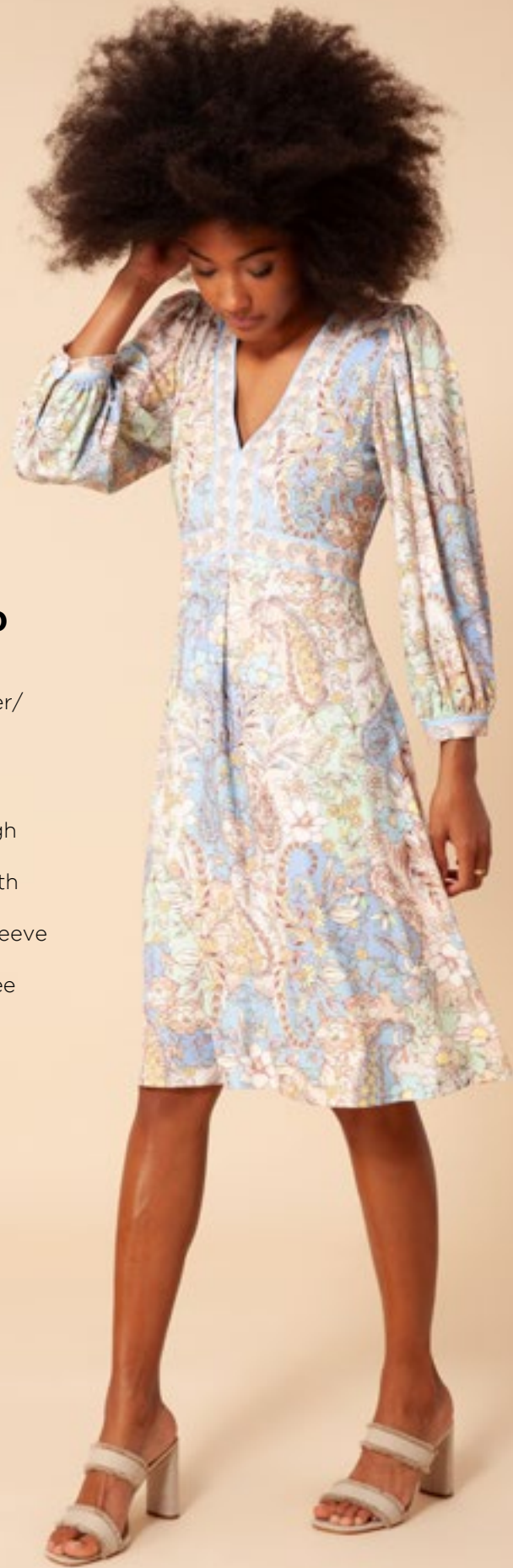
Beige
Pink



Sylvia
32BL6060

Matte jersey
(96% polyester/
4% spandex)
Mesh lining
(95% nylon/
8% spandex)
Slim fit through
bodice
A-line skirt with
pleat at waist
3/4 balloon sleeve
with cuff
Below the knee
length
(41" HPS)

Beige
Pink



Sylvia
32BL6060

Matte jersey
(96% polyester/
4% spandex)
Mesh lining
(95% nylon/
8% spandex)
Slim fit through
bodice
A-line skirt with
pleat at waist
3/4 balloon sleeve
with cuff
Below the knee
length
(41" HPS)

Beige
Pink





BRIGHT STRIPES



**Aleja
32GH2020**

Embroidered crinkle gauze (100% viscose)
Stretch Jersey front & back body (95% viscose 5% spandex)
Balloon sleeve with smocked cuff
Leaf crochet trim detail

**Blue
Coral
Gold**



**Aleja
32GH2020**

Embroidered crinkle gauze (100% viscose)
Stretch Jersey front & back body (95% viscose 5% spandex)
Balloon sleeve with smocked cuff
Leaf crochet trim detail

**Blue
Coral
Gold**



**Aleja
32GH2020**

Embroidered crinkle gauze (100% viscose)
Stretch Jersey front & back body (95% viscose 5% spandex)
Balloon sleeve with smocked cuff
Leaf crochet trim detail

**Blue
Coral
Gold**



**Kizzy
32GH2040**

Embroidered crinkle gauze (100% viscose)
Shirring at front
Voluminous long sleeve with cuff
Leaf crochet trim detail
Hip length with curve hem

**Blue
Coral
Gold**



**Kizzy
32GH2040**

Embroidered crinkle gauze (100% viscose)
Shirring at front
Voluminous long sleeve with cuff
Leaf crochet trim detail
Hip length with curve hem

**Blue
Coral
Gold**



**Kizzy
32GH2040**

Embroidered crinkle gauze (100% viscose)
Shirring at front
Voluminous long sleeve with cuff
Leaf crochet trim detail
Hip length with curve hem

**Blue
Coral
Gold**

Becky
32GH6020

Embroidered
crinkle gauze
(100% viscose)
Body is lined
(100% viscose)
Ruffle bands at armhole
Enamel buttons at
front keyhole
Elastic under the bust
Tiered voluminous
skirt with
crochet leaf trim
& ruffles
Midi length
(42" HPS)

Blue
Coral
Gold



Becky
32GH6020

Embroidered
crinkle gauze
(100% viscose)
Body is lined
(100% viscose)
Ruffle bands at armhole
Enamel buttons at
front keyhole
Elastic under the bust
Tiered voluminous
skirt with
crochet leaf trim
& ruffles
Midi length
(42" HPS)

Blue
Coral
Gold



Becky
32GH6020

Embroidered
crinkle gauze
(100% viscose)
Body is lined
(100% viscose)
Ruffle bands at armhole
Enamel buttons at
front keyhole
Elastic under the bust
Tiered voluminous
skirt with
crochet leaf trim
& ruffles
Midi length
(42" HPS)

Blue
Coral
Gold





**Taliah
32GH6040**

Embroidered
crinkle gauze
(100% viscose)
Body is lined
(100% viscose)
Easy fit, slim
through rib cage
Tiered, swingy fit at skirt
Leaf crochet trim detail
3/4 full sleeve
with ruffle at hem
Above the knee length
(35.5" HPS)

**Blue
Coral
Gold**



**Taliah
32GH6040**

Embroidered
crinkle gauze
(100% viscose)
Body is lined
(100% viscose)
Easy fit, slim
through rib cage
Tiered, swingy fit at skirt
Leaf crochet trim detail
3/4 full sleeve
with ruffle at hem
Above the knee length
(35.5" HPS)

**Blue
Coral
Gold**



**Taliah
32GH6040**

Embroidered
crinkle gauze
(100% viscose)
Body is lined
(100% viscose)
Easy fit, slim
through rib cage
Tiered, swingy fit at skirt
Leaf crochet trim detail
3/4 full sleeve
with ruffle at hem
Above the knee length
(35.5" HPS)

**Blue
Coral
Gold**

**Taliah
32GH604M**

Embroidered
crinkle gauze
(100% viscose)
Body is lined
(100% viscose)
Easy fit, slim
through rib cage
Tiered, swingy fit at skirt
Leaf crochet trim detail
3/4 full sleeve
with ruffle at hem
Maxi length
(59" HPS)

**Blue
Coral
Gold**



**Taliah
32GH604M**

Embroidered
crinkle gauze
(100% viscose)
Body is lined
(100% viscose)
Easy fit, slim
through rib cage
Tiered, swingy fit at skirt
Leaf crochet trim detail
3/4 full sleeve
with ruffle at hem
Maxi length
(59" HPS)

**Blue
Coral
Gold**



**Taliah
32GH604M**

Embroidered
crinkle gauze
(100% viscose)
Body is lined
(100% viscose)
Easy fit, slim
through rib cage
Tiered, swingy fit at skirt
Leaf crochet trim detail
3/4 full sleeve
with ruffle at hem
Maxi length
(59" HPS)

**Blue
Coral
Gold**





Amaria
32ND2020

Swiss dot
(100% cotton)
Voluminous sleeve
with pleating
Hip length with
curved high/low
hem

Ivory



Amaria
32ND202S

Swiss dot
(100% cotton)
Voluminous sleeve
with pleating
Hip length with
curved high/low
hem

Light blue
Pink
White



**Amaria
32ND202S**

Swiss dot
(100% cotton)
Voluminous sleeve
with pleating
Hip length with
curved high/low hem

**Light blue
Pink
White**



**Amaria
32ND202S**

Swiss dot
(100% cotton)
Voluminous sleeve
with pleating
Hip length with
curved high/low hem

**Light blue
Pink
White**



**Luanna
32ND2040**

Swiss dot
(100% cotton)
Pleating at yokes
Buttons at front placket
Ruffle founce sleeve
Trim detailing at
oke & sleeve
High hip length
with curved hem

**Ivory
Pink**



**Luanna
32ND2040**

Swiss dot
(100% cotton)
Pleating at yokes
Buttons at front placket
Ruffle founce sleeve
Trim detailing at
oke & sleeve
High hip length
with curved hem

**Ivory
Pink**



**Roxie
32ND6020**

Swiss dot
(100% cotton)
Voile lining at body
(100% cotton)
Buttons at front body
Trim inserts at
sleeve & skirt
Tiered voluminous skirt
Self tie belt at waist
Above the knee length
(35.5" HPS)

**Ivory
Pink**



Roxie
32ND6020

Swiss dot
(100% cotton)
Voile lining at body
(100% cotton)
Buttons at front body
Trim inserts at
sleeve & skirt
Tiered voluminous skirt
Self tie belt at waist
Above the knee length
(35.5" HPS)

Ivory
Pink



Grace
32ND6040

Swiss dot
(100% cotton)
Voile lining at body
(100% cotton)
Pintuck detailing
Ties at front neck
3/4 length sleeve
with elastic
at opening
Elastic at waist
Voluminous
tiered skirt
Midi length
(48" HPS)

Ivory
Pink

**Grace
32ND6040**

Swiss dot
(100% cotton)
Voile lining at body
(100% cotton)
Pintuck detailing
Ties at front neck
3/4 length sleeve
with elastic
at opening
Elastic at waist
Voluminous
tiered skirt
Midi length
(48" HPS)

**Ivory
Pink**



**Charlize
32ND6060**

Lurex crepe
(100% viscose)
Voile lining at body
(100% cotton)
Asymmetrical bust
with pleating
at front shoulder
Elastic at waist
Tiered voluminous skirt
Maxi length
(59" HPS)

**Ivory
Pink**



**Charlize
32ND6060**

Lurex crepe
(100% viscose)
Voile lining at body
(100% cotton)
Asymmetrical bust
with pleating
at front shoulder
Elastic at waist
Tiered voluminous skirt
Maxi length
(59" HPS)

**Ivory
Pink**





**Charlize
32ND606S**

Lurex crepe
(100% viscose)
Voile lining at body
(100% cotton)
Asymmetrical bust
with pleating
at front shoulder
Elastic at waist
Tiered voluminous skirt
Maxi length
(59" HPS)

**Lilac
Navy**



**Charlize
32ND606S**

Lurex crepe
(100% viscose)
Voile lining at body
(100% cotton)
Asymmetrical bust
with pleating
at front shoulder
Elastic at waist
Tiered voluminous skirt
Maxi length
(59" HPS)

**Lilac
Navy**



CROCHET GETAWAY



Alexane
32QT2020

Crochet
(100% cotton)
Jersey cami included
(95% viscose
5% spandex)
Laceup at front neck
7/8 length bell sleeve
Low hip length
(27" HPS)

Ivory
Navy



Kiki
32QT6020

Crochet
(100% cotton)
Jersey cami included
(95% viscose
5% spandex)
Laceup at front neck
7/8 length bell sleeve
Above the knee length
(35.5"HPS)

Ivory
Navy



Kiki
32QT6020

Crochet
(100% cotton)
Jersey cami included
(95% viscose
5% spandex)
Laceup at front neck
7/8 length bell sleeve
Above the knee length
(35.5"HPS)

Ivory
Navy



Uny
32QT6040

Crochet
(100% cotton)
Jersey cami included
(95% viscose
5% spandex)
Boatneck
Slim fit body
Ankle length
57"HPS)

Ivory
Navy



Uny
32QT6040

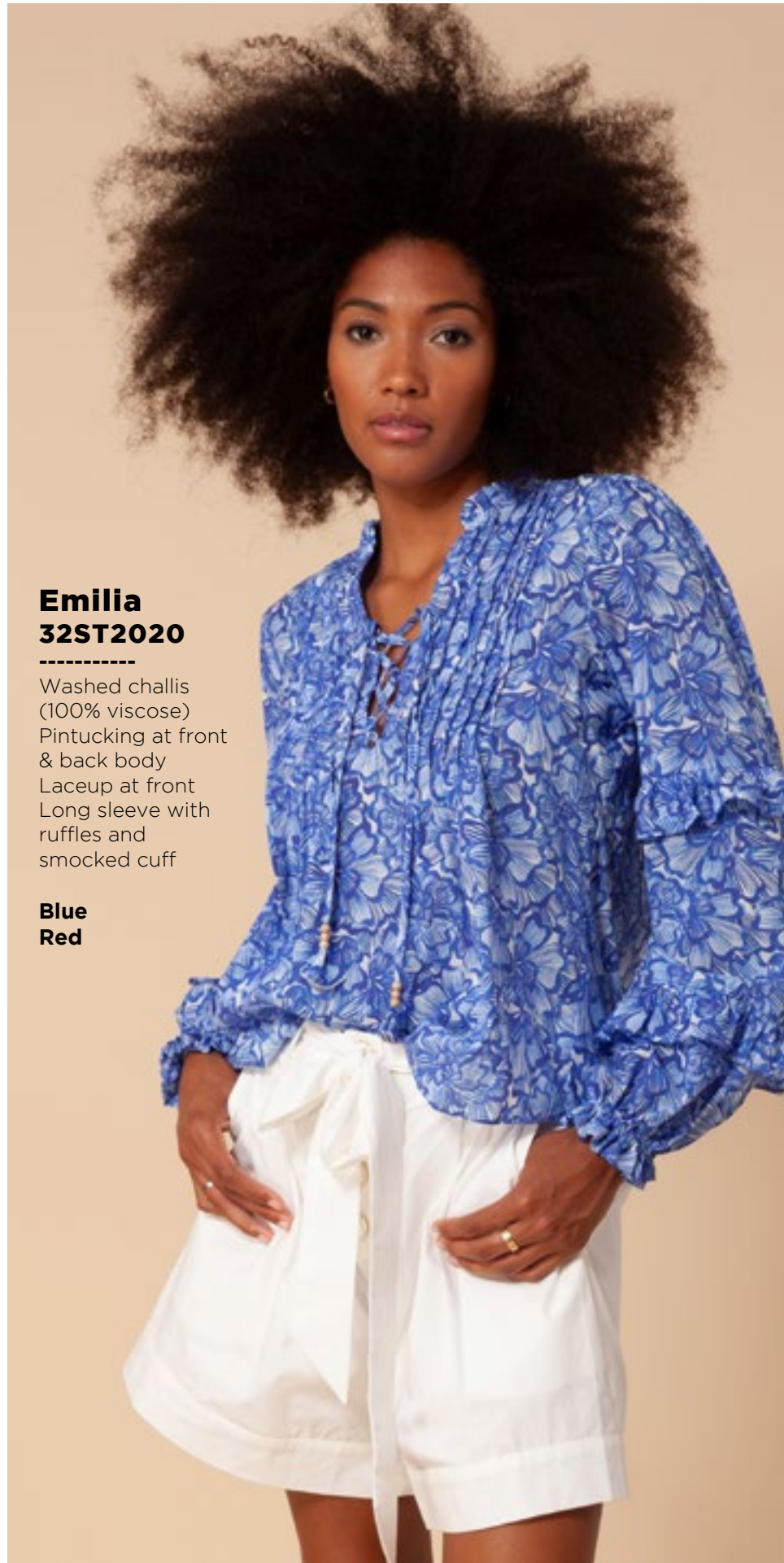
Crochet
(100% cotton)
Jersey cami included
(95% viscose
5% spandex)
Boatneck
Slim fit body
Ankle length
57"HPS)

Ivory
Navy





SPRING IN MY STEP



**Emilia
32ST2020**

Washed challis
(100% viscose)
Pintucking at front
& back body
Laceup at front
Long sleeve with
ruffles and
smocked cuff

**Blue
Red**



**Emilia
32ST2020**

Washed challis
(100% viscose)
Pintucking at front
& back body
Laceup at front
Long sleeve with
ruffles and
smocked cuff

**Blue
Red**



**Emilia
32ST202S**

Washed challis
(100% viscose)
Pintucking at front
& back body
Laceup at front
Long sleeve with
ruffles and
smocked cuff

**Poppy
White**



Emilia
32ST202S

Washed challis
(100% viscose)
Pintucking at front
& back body
Laceup at front
Long sleeve with
ruffles and
smocked cuff

Poppy
White



Maritza
32ST2040

Washed crepe
de chine
(100% silk)
Enamel buttons
at front
Ruffle flounce sleeve
High hip length
with curved hem

Blue
Red



Maritza
32ST2040

Washed crepe
de chine
(100% silk)
Enamel buttons
at front
Ruffle flounce sleeve
High hip length
with curved hem

Blue
Red



Larissa
32ST6020

Matte jersey
(96% polyester/
4% spandex)
Mesh lining
(95% nylon/
8% spandex)
High round neck
Keyhole with button
at back
Flutter sleeve
Slim a-line fit
Above the
knee length
(35.5"HPS)

Blue
Red



Larissa
32ST6020

Matte jersey
(96% polyester/
4% spandex)
Mesh lining
(95% nylon/
8% spandex)
High round neck
Keyhole with button
at back
Flutter sleeve
Slim a-line fit
Above the
knee length
(35.5"HPS)

Blue
Red



Darcey
32ST6040

Chiffon
(100% polyester)
Voile lining
(100% cotton)
Body is lined
Ruffle at neck
Puff sleeve ends
above elbow
Tiered skirt with slit
at lower tiers
Ankle length with
slight hi/low
(49" HPS at front,
52" at back)

Blue
Red

Darcey
32ST6040

Chiffon
(100% polyester)
Voile lining
(100% cotton)
Body is lined
Ruffle at neck
Puff sleeve ends
above elbow
Tiered skirt with slit
at lower tiers
Ankle length with
slight hi/low
(49" HPS at front,
52" at back)

Blue
Red



Matilde
32ST6060

Washed voile
(100% cotton)
Voile lining
(100% cotton)
Enamel buttons
at bodice
Invisible zip at back
Balloon sleeve with
eyelet trim
Smocked cuff
above elbow
Slim fit through body
Self tie belt at waist
Voluminous tier
at hem with
eyelet trim
Above the
knee length
(35.5" HPS)

Blue
Red



Matilde
32ST6060

Washed voile
(100% cotton)
Voile lining
(100% cotton)
Enamel buttons
at bodice
Invisible zip at back
Balloon sleeve with
eyelet trim
Smocked cuff
above elbow
Slim fit through body
Self tie belt at waist
Voluminous tier
at hem with
eyelet trim
Above the
knee length
(35.5" HPS)

Blue
Red



Matilde
32ST606D

Washed voile
(100% cotton)
Voile lining
(100% cotton)
Enamel buttons
at bodice
Invisible zip at back
Balloon sleeve with
eyelet trim
Smocked cuff
above elbow
Slim fit through body
Self tie belt at waist
Voluminous tier
at hem with
eyelet trim
Midi length
(48" HPS)

Blue
Red



Matilde
32ST606D

Washed voile
(100% cotton)
Voile lining
(100% cotton)
Enamel buttons
at bodice
Invisible zip at back
Balloon sleeve with
eyelet trim
Smocked cuff
above elbow
Slim fit through body
Self tie belt at waist
Voluminous tier
at hem with
eyelet trim
Midi length
(48" HPS)

Blue
Red





SUNLIT STREETS



**Martina
32UT2020**

Washed voile
(100% cotton)
Long voluminous
sleeve with cuff
Hip length with
curved hem

**Blue
Pink**



**Martina
32UT2020**

Washed voile
(100% cotton)
Long voluminous
sleeve with cuff
Hip length with
curved hem

**Blue
Pink**



**Lauretta
32UT2040**

Washed Charmeuse
(25% silk/75% viscose)
Enamel buttons at
front placket
Pleat at body
under placket
Balloon sleeve
with smocked cuff
High hip length
with curved hem

**Blue
Pink**



**Lauretta
32UT2040**

Washed Charmeuse
(25% silk/75% viscose)
Enamel buttons at
front placket
Pleat at body
under placket
Balloon sleeve
with smocked cuff
High hip length
with curved hem

**Blue
Pink**



**Lauretta
32UT204S**

Washed Charmeuse
(25% silk/75% viscose)
Enamel buttons at
front placket
Pleat at body
under placket
Balloon sleeve
with smocked cuff
High hip length
with curved hem

**Navy
White**



**Lauretta
32UT204S**

Washed Charmeuse
(25% silk/75% viscose)
Enamel buttons at
front placket
Pleat at body
under placket
Balloon sleeve
with smocked cuff
High hip length
with curved hem

**Navy
White**

**Violette
32UT2060**

Jersey
(95% viscose/
5% spandex)
Ruffle & trim at
armhole & keyhole
Tie at front neck
Slim easy fit
through body
High hip length
with curved hem

**Blue
Pink**



**Violette
32UT2060**

Jersey
(95% viscose/
5% spandex)
Ruffle & trim at
armhole & keyhole
Tie at front neck
Slim easy fit
through body
High hip length
with curved hem

**Blue
Pink**



**Violette
32UT206S**

Jersey
(95% viscose/
5% spandex)
Ruffle & trim at
armhole & keyhole
Tie at front neck
Slim easy fit
through body
High hip length
with curved hem

**Navy
Pink
White**





**Violette
32UT206S**

Jersey
(95% viscose/
5% spandex)
Ruffle & trim at
armhole & keyhole
Tie at front neck
Slim easy fit
through body
High hip length
with curved hem

**Navy
Pink
White**



**Violette
32UT206S**

Jersey
(95% viscose/
5% spandex)
Ruffle & trim at
armhole & keyhole
Tie at front neck
Slim easy fit
through body
High hip length
with curved hem

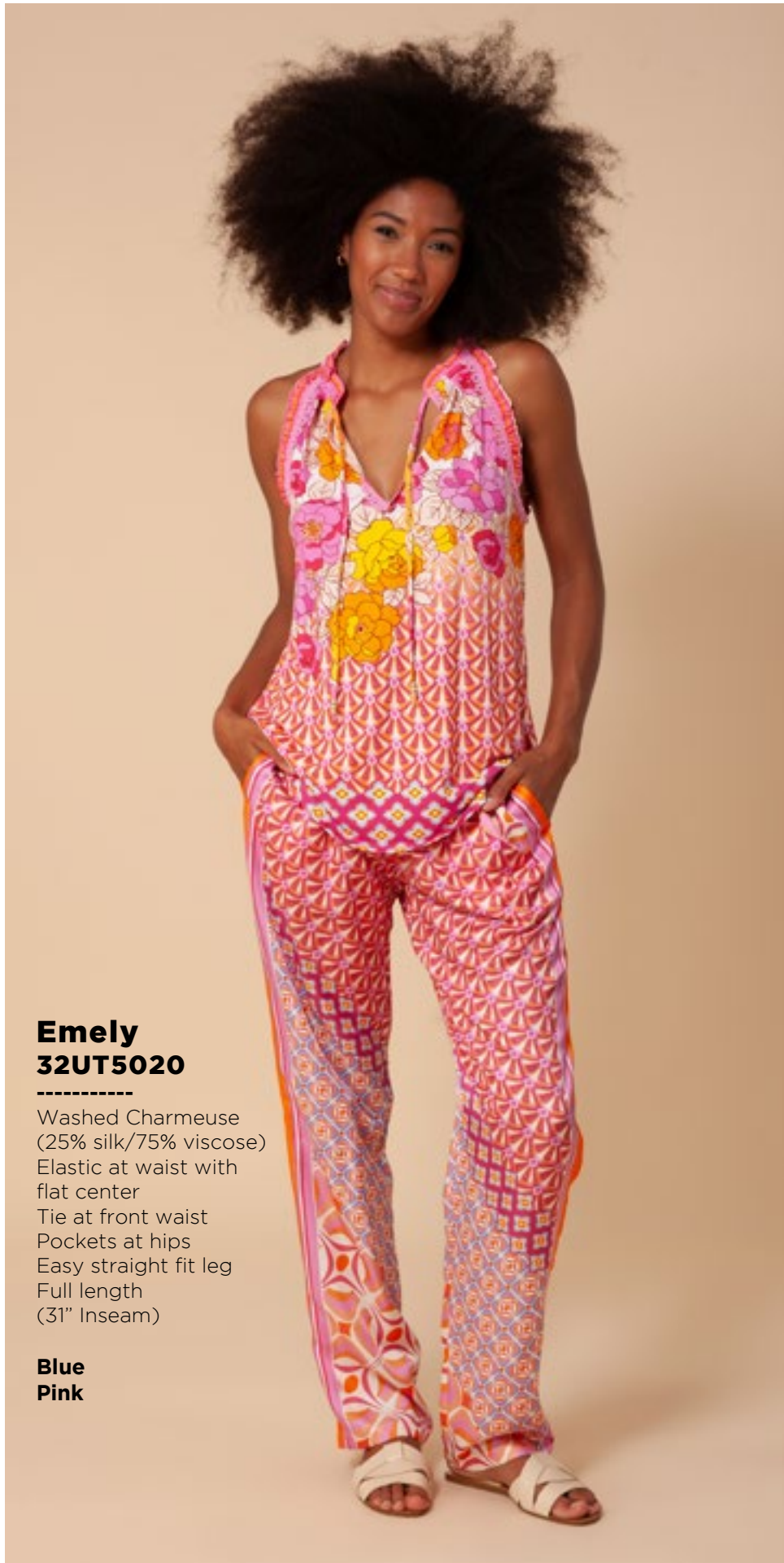
**Navy
Pink
White**



**Emely
32UT5020**

Washed Charmeuse
(25% silk/75% viscose)
Elastic at waist with
flat center
Tie at front waist
Pockets at hips
Easy straight fit leg
Full length
(31" Inseam)

**Blue
Pink**



**Emely
32UT5020**

Washed Charmeuse
(25% silk/75% viscose)
Elastic at waist with
flat center
Tie at front waist
Pockets at hips
Easy straight fit leg
Full length
(31" Inseam)

**Blue
Pink**



**Emely
32UT502S**

Washed Charmeuse
(25% silk/75% viscose)
Elastic at waist with
flat center
Tie at front waist
Pockets at hips
Easy straight fit leg
Full length
(31" Inseam)

Navy



**Zantina
32UT6020**

Poplin
(100% cotton)
Enamel buttons
at front
3/4 sleeve with tab
Tier at skirt
Above the knee
length at front,
longer at back
(35" at front)

**Blue
Pink**



Zantina
32UT6020

Poplin
(100% cotton)
Enamel buttons
at front
3/4 sleeve with tab
Tier at skirt
Above the knee
length at front,
longer at back
(35" at front)

Blue
Pink



Reina
32UT6040

Washed voile
(100% cotton)
Enamel buttons at
front bodice
Smocking at waist
& cuff
Balloon sleeve
Tiered voluminous skirt
Midi length
(51" HPS)

Blue
Pink



Reina
32UT6040

Washed voile
(100% cotton)
Enamel buttons at
front bodice
Smocking at waist
& cuff
Balloon sleeve
Tiered voluminous skirt
Midi length
(51" HPS)

Blue
Pink

**Carenza
32UT6060**

Matte jersey
(96% polyester/
4% spandex)
Dropped shoulder
Pleat at front under
placket Pockets at hips
Above the knee length
(35.5" HPS)
Deep hem added
to adjust length

32UT606B

(BEADED)

Hand beading
at neckline

**Blue
Pink**



**Carenza
32UT6060**

Matte jersey
(96% polyester/
4% spandex)
Dropped shoulder
Pleat at front under
placket Pockets at hips
Above the knee length
(35.5" HPS)
Deep hem added
to adjust length

32UT606B

(BEADED)

Hand beading
at neckline

**Blue
Pink**



This book is a presentation of a selection of Hale Bob product and is correct at time of publication.

To view the entire collection of products including updates and additions. You can view product line sheets at halebob.com by logging into the "Merchant" section of our website.

Prices and products posted in this book are current at time of publication but are subject to change.

Sales Director

East Coast
South East
Puerto Rico
Canada
Majors

Cathy Cooley

310-963-2463
cathy@halebob.com

Sales Executive

Mexico
Central America
South America

Maria Garcia

323-394-1739
mariag@halebob.com

Sales Executive

West Coast

Theresa Matthew King

213-304-9702
Tmatthewking@halebob.com

For Marketing & Press Inquiries:

Marianna Gunther
marianna@halebob.com

HALE BOB
LOS ANGELES

