



Carbon Racer with Silicone Holder to Mount under Bottle Cage for Quick Access ~ no silicone holder when packaged with Cannondale Scalpel

① **END CAPS** protect **INSERTION TUBES** with ready-to-use soft tip & mega repair plugs. Insertion tubes are removable/replaceable.

② **PREP** repair plug by rolling cord firmly between pointer finger and thumb to reduce diameter and straighten (as needed). **Adding a drop of water or saliva before rolling can aid inserting in tube. Don't cram or jam a repair plug into insertion tube.** Recommended video <https://www.youtube.com/watch?v=vzJ-Q2vU1Vg>

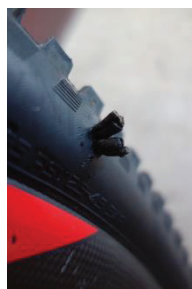
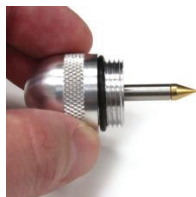
③ **LOAD** plug so metal tip seats on open edge as shown.

④ **IF THERE'S** a puncture object, like nail or screw, note its angle when removing from tread and insert in the path.

⑤ **TO MAKE A REPAIR**, firmly push insertion tube straight through puncture till tool bottoms out on tread. **DON'T twist or turn tool when inserting plug; that can cause tip to separate from cord. DON'T extract before bottoming out or you might deposit a tip in the rubber without cord. TIP: If tire pressure is very low, squeeze outside walls together to keep tread raised when inserting or add a little air/CO2 through the valve stem before making a repair since it can be difficult to insert plug when tire is too collapsed.**

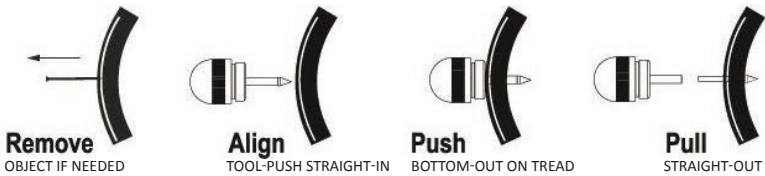
⑥ **EXTRACT**, depositing plug in the tire. **IF A SINGLE PLUG** is not enough to seal the injury, just fold cord tail flat on tire; hold tail firmly with your finger, insert another plug alongside! Add as many plugs as needed, folding each tail against tire as you insert plugs. A tail pressed into the tire doesn't need to be snipped off, but if you want to trim, keep it to about 6mm/1/4" long and press into or between tread with your finger (a flush trim is not preferred). **TIP: After repair, SPIN TIRE to disburse remaining sealant.**

⑦ **SEALANT-FRIENDLY** repair cord has viscoelastic, impregnated rubber that bonds with tire. No need to patch or further repair a puncture that is not leaking.



MORE INFO ABOUT DYNAPLUG TOOLS . . .

BASIC STEPS TO PLUGGING A PUNCTURE using a Dynaplug Pill



REPAIR PLUG OPTIONS Repair plugs match up with insertion tube/s of a tool. The variety gives every rider a choice considering their tires, wheels, riding style, riding terrain, diverse tire injuries and so on.



LENGTH Bike repair plugs are the same length except the shortest plug for Road Air tool. **GEOMETRY**

POINTED tip is ideal for punctures next to the rim and made by thorns and other pesky objects. Supplied with all tools, the multi-use **SOFT NOSE** has the same shape, but the end is slightly rounded off. **BULLET** and **MEGA** are blunt with a low profile. Mega cord is about 2X thicker and designed for large injuries. **METAL PLUG TIPS** Machined by precision Swiss CNC machines, we use aluminum and brass alloys. **Brass is notably soft, self-lubricating, non-corrosive, and non-abrasive.** **BLACK CORD** A viscoelastic, rubber impregnated material, compatible with sealant, that bonds well with your tire; it's not vulcanized rubber. **YELLOW PIPE CLEANER** Yellow to attract your attention, use it to clean plug residue clinging to the inside of insertion tube; sticky residue inhibits depositing or loading a repair plug! Dip pipe cleaner in denatured or isopropyl alcohol and clean away. **PLUG STORAGE** Keep in Dynaplug PVC plug tray; or wrap in wax paper or similar media. Get additional insertion tubes to fill with plugs and store. Never put a sticky plug in a capsule model if it's not in an insertion tube! **PLUG SHELF-LIFE** Around 4 years, but during storage, the plugs may appear to have dried out. In this case, use a drop of water/spit to revive them. When temperatures go up, it's normal for plugs to be stickier. Also add a drop of water/spit when they seem too sticky and difficult to insert in a tube. **CLEANING-OFF PLUG RESIDUE** Use a clean cloth/brush dipped in denatured or isopropyl alcohol. Never apply WD40 or other lubricant on tools or plugs (this will damage the cord compound).

Limited lifetime warranty. The Dynaplug® tire repair tool is warranted free from manufacture defects in materials and workmanship. There are no warranties, express or implied, of merchantability or fitness for a particular purpose applicable to the plugs. Dynaplug will replace free of charge any Dynaplug® tool which is defective in material or workmanship under normal use. Misuse of a tool will void this Warranty. Replacement is the sole and exclusive remedy available to the purchaser.

If you have a warranty issue, please call or send an email.

Limitation of damages. In no event and under no circumstance shall Dynaplug be liable to the buyer for any indirect, special, incidental, consequential, lost profit, loss of business, loss of goodwill or reputation, damage, cost (including for replacement transportation), expense or loss of any kind. Some states/provinces don't allow the exclusion or limitation of incidental or consequential damages, so the above limitation or exclusion may not apply to you.

Specifications and accessories are subject to change without notice.

Dynaplug is a registered trademark of USTC. US PATENT 8,707,829 © USTC 2021

CONTACT US WITH YOUR COMMENTS, SUGGESTIONS, EXPERIENCES, QUESTIONS

PHONE 530.592.1188 EMAIL info@dynaplug.com OR sales@dynaplug.com

ON THE WEB www.dynaplug.com/ www.instagram.com/dynaplug/# www.facebook.com/dynaplug