

You've received the 1st Edition Covert Series Tactical Tire Repair Tool!

Any questions, we're right here in Chico, CA, ready to answer the phone & reply to emails, so don't hesitate to reach out. Caution: This tool is not recommended for carbon fiber bars.

The Covert Series Tool is a handlebar mount reconfiguration of the Racer Pro. For "how to use your tool for plugging," check out the instructions on the flip side.

Before you get started, make sure your bar has a MINIMUM ID of 18.42mm/0.725in! If you're good to go, here's how to install...

The Covert comes out of the box with 1/8" long set screws pre-installed in the tool Housing. Depending on the bar, it may be necessary to swap set screws out for the longer 3/16" size provided in the little bag. If you get to step 2, and you can see 4 or more full screw threads protruding from the Housing, swap in the 3/16" size and start over.

STEP 1. Set the initial length of the set screws.

- a. First things first, remove the Tool from the Housing, otherwise this won't go well.
- b. Before sliding the Housing into the bar, use the ball end of the provided hex wrench to thread the set screws out to the approximate distance where they would contact the inside bar. Nice big holes were drilled across from each set screw to make this easier to do.
- c. Don't be afraid to fit check the screws by sliding the Housing into the bar as you adjust. The goal here is to get to the point where the set screws just barely graze the inside of the bar when checking the fit. Note: make sure to check that each of the set screws are threaded out the same distance from the housing before you check fit so your Housing will stay nice and centered in your bar when you finally snug down those set screws.

STEP 2. Insert the Housing and tighten it into place.

- a. Slide the Housing as far into the bar as you can. The Covert Drop flange will rest against your bar tape or the end of the bar itself. You may need to score the inside of your bar to remove some tape. If you have the Covert MTB, the Flange will rest against your grips.
- b. While keeping light pressure on the Flange to keep the Housing in your bar, snug the setscrews down using the short end of the hex wrench. Note: It's best to tighten the set screws equally, making small adjustments to each one in turn.
- c. Check them again! Give one last good right-hand turn to each set screw for good measure and you're ready to move on.

Fasten the Covert to the Housing and you're done!

Pre-ride, check the Covert is securely threaded to Housing and loaded with repair plugs. A loose tool may back out over time from riding vibration. Get repair plugs at a local bike shop or online supplier.

Please contact Dynaplug Sheryl, sales@dynaplug.com, with your suggestions & experiences. Use support@dynaplug.com for customer service. Call or Text us @ 1 530 345 8000. Thanks for choosing Dynaplug!



the racer pro

- ✓ 6061 aluminum
- ✓ Twin SS insert tubes
- ✓ 3 soft tip plugs
- ✓ 1 mega tip plug
- ✓ Made in Chico CA
- ✓ Always ready-to-go



1 END CAPS protect TWIN INSERTION TUBES: removable, replaceable, reversible.

2 PREP repair plug by rolling cord firmly between pointer finger and thumb to reduce diameter and straighten (as needed). Adding a drop of water or saliva before rolling can aid inserting in tube. Don't cram or jam a repair plug into insertion tube. Recommended repair plug video: <https://www.youtube.com/watch?v=vzJ-Q2vU1Vg>

3 LOAD plug so metal tip seats on open edge as shown.

4 IF THERE'S a puncture object, like nail or screw, note its angle when removing from tread and then insert in the path.

5 TO MAKE A REPAIR, firmly push insertion tube straight through puncture until tool bottoms out on tread. DON'T twist & turn when inserting plug. DON'T extract before bottoming out. TIP: If tire pressure is very low: add a little air or try squeezing outside walls together to keep tread more rigged when plugging.

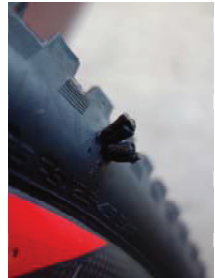
6 EXTRACT, depositing plug in the tire. IF A SINGLE PLUG is not enough to seal the injury, just fold cord tail flat on tire; hold tail firmly with your finger, insert another plug alongside! Add as many plugs as needed, folding each tail against tire as you insert plugs. A tail pressed into the tire doesn't need to be snipped off, but if you want to trim, keep it to about 6mm/1/4" long and press into or between tread with your finger (a flush trim is not preferred). TIP: Spin tire after repair to redistribute displaced sealant.



A brass tip weighs only 5 grams/0.018 ounce, and it doesn't cause any damage to the inside of the casing or other areas.

7 SEALANT-FRIENDLY repair cord has viscoelastic, impregnated rubber that bonds with tire. But sealant in the tire isn't required to make a seal.

8 No need to patch or further repair a puncture that isn't leaking.



TOTALLY TUBELESS TIRE REPAIR™