

# Thunderbolt

## Dual Drive Enclosure Docking Station

### User Manual

TBU405ProMax

### Product Overview

Dear customers, thank you for purchasing our product. In order for you to further understand the product, Please read this manual carefully before use.

### Package Contents

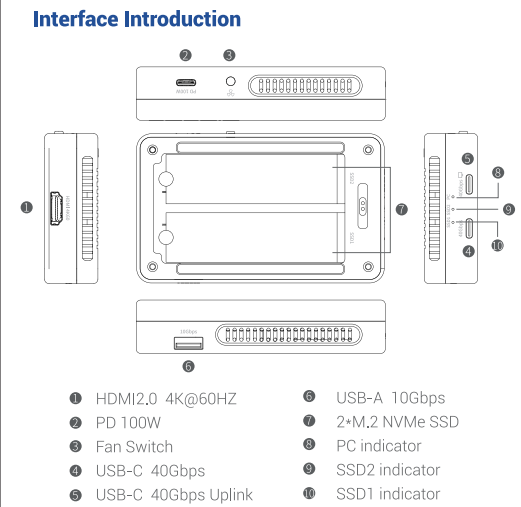
- Thunderbolt Dual Drive Enclosure Docking Station
- Thunderbolt Cable
- Thermal Pad
- Rubber stopper
- PD Power Supply
- User Manual

### Product Introduction

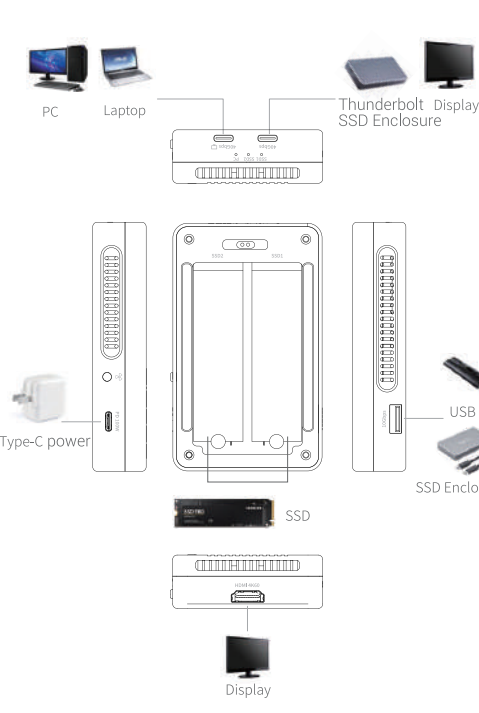
- Uplink USB-C interface 40Gbps, fully compatible with Thunderbolt 3/4, support up to 60W charging; Multi-function interface expansion: 2\*M.2 SSD enclosure interface +1\*Thunderbolt 4 +1\*HDMI2.0 +1\*PD3.0 +1\*USB-A, 1\*Thunderbolt 4 interface, support for data/video/charging, the theoretical rate of 40Gbps, support for daisy-chaining, support for up to 8K60 video output, also as uplink interface, support up to 15W charging;
- 2\*M.2 interface, NVMe protocol, single disk theoretical rate of 20Gbps, support for M KEY/B&M KEY interface, support for SSD specifications 2230/2242/2266/2280, maximum support for a single disk 8TB, dual-disk capacity of 2 \* 8TB, support for soft RAID mode (detailed RAID mode operation);
- 1\*USB-A 3.1 interface, maximum transmission rate up to 10Gbps;

### Interface Introduction

- 1\*HDMI2.0 up to support 4K @ 60HZ, HDMI + Thunderbolt interface, can realize the external 2 monitors, support for dual display of different screens (excluding Mac OS M1/M2/M3 processor);
- All-aluminum alloy body, built-in fan, multiple heat dissipation; Tool-free installation, docking station interface supports hot-plug and play, plug and play, convenient for users to apply;
- 3\*LED indicator to monitor the product operation status in real time;
- Compatible with Window/Mac/Linux and other multi-platform operating systems.



### Product connection



### Installation Instructions

- Step1: Open the hard disk enclosure;
- Step2: Insert the SSD drive, plug in the SSD retaining rubber plug, and apply the silicone thermal paste;
- Step3: Close the hard disk case (align the fan connection contacts) and connect it to the computer for use;

### Specifications

Product	Thunderbolt Dual Drive Enclosure Docking Station
Model	TBU405ProMax
Transmission Speed	Up to 40Gbps
Material	Aluminum
Capacity	Maximum 16TB
Adapting SSD	2230/2242/2266/2280
Size	109*65*23mm
Uplink port	1*PD3.0
Extension interface	1*USB-C 40Gbps(Thunderbolt) 1*M.2 NVMe(M Key/B&M Key) 1*USB-A3.1 10Gbps 1*HDMI 2.0(4K@60HZ)
System	Window/Mac/ Linux

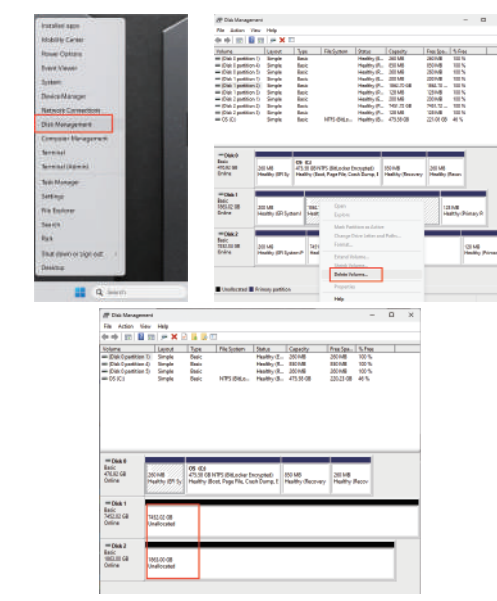
### Tips

- Must be connected to the PD power supply in order to use, please make sure the power supply is connected first when using;
- Adapt to different specifications of the length of the SSD, you need to use the SSD ferrules to connect and then access;
- If you use formatting operation, please make a good data backup in advance to prevent data loss;
- Mac OS and Windows systems support different hard disk formats, according to your actual needs, choose the appropriate hard disk format.

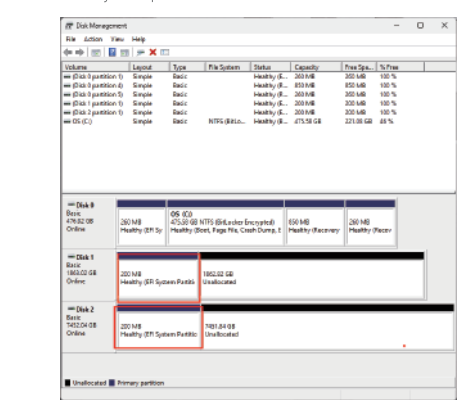
### RAID Mode Operation Guide

#### WINDOWS System Operation Procedure

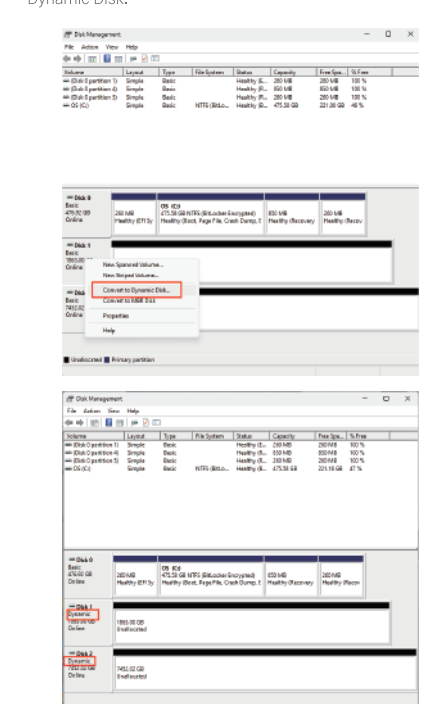
Connect the hard disk with the computer (hard disk 1, 2 is an external hard disk)  
Open the disk management, the hard disk can be deleted volume (reality is not assigned) as shown:



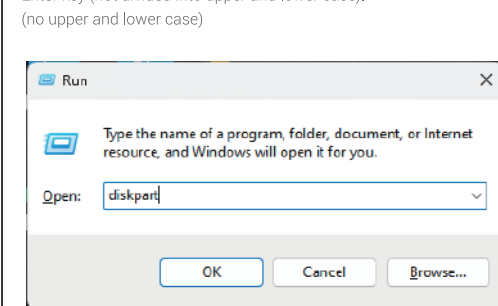
Note: If the hard disk has EFI system partition, it will not be able to complete the group RAID mode, please check the document "How to delete EFI system partition tutorial".



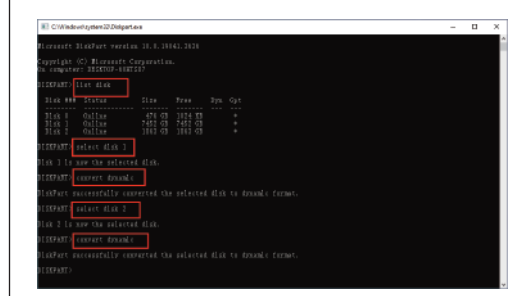
Step 1: Convert Disk to Dynamic Disk  
Method 1: Select the disk, right click and choose Convert to Dynamic Disk.



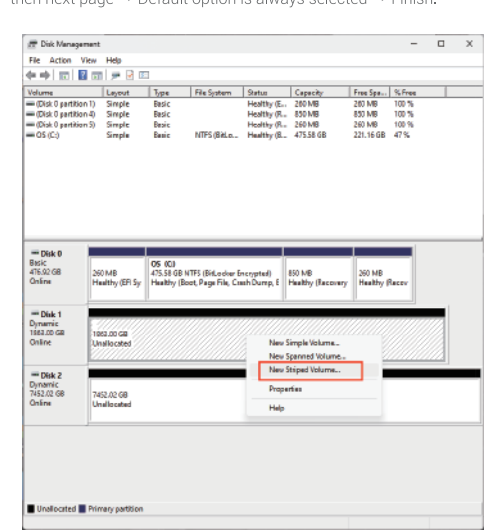
Method 2:  
1. "Windows+R" press the Enter key -> type "diskpart" and press the Enter key (not divided into upper and lower case). (no upper and lower case)



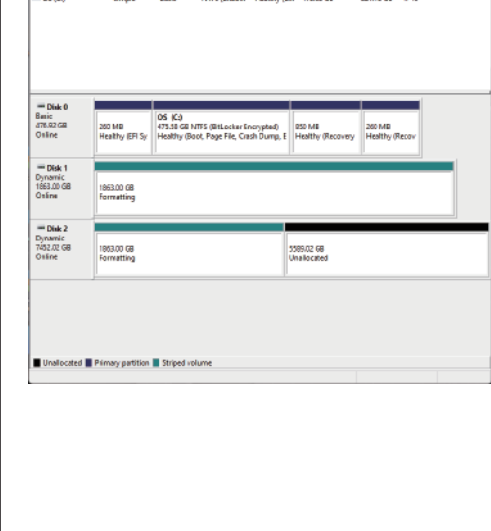
- Input "list disk" and press the Enter key (the command is not case sensitive, note that there must be a space). (the command is not case sensitive, note that there must be a space)
- type select disk 1 (note: the number 1 is the external hard disk number, the external hard disk number is how much to write how much) choose to confirm your hard disk
- Enter the command "convert dynamic" to convert the disk into a dynamic disk.



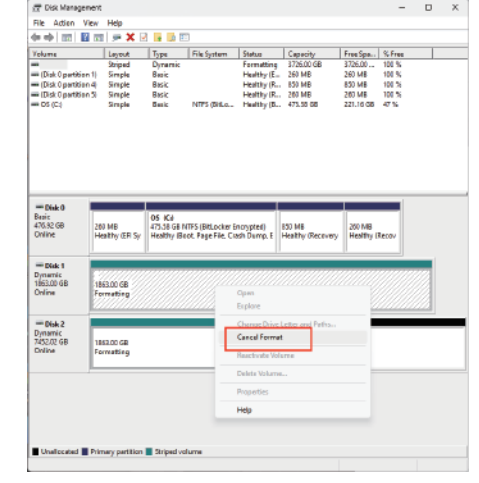
- Right-click the unallocated volume in Disk Management -> New Mirrored Volume -> Next -> Select the corresponding disk -> Add -> Confirmation is complete, then next page -> Default option is always selected -> Finish.



- Right-click the unallocated newly added volume in Disk Management -> New spanning volume -> Next -> Select the appropriate disk -> Add -> Confirmation is complete, next page -> Always Default option -> Finish



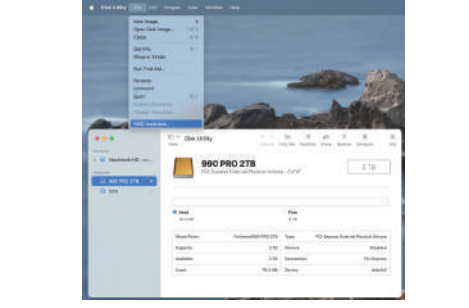
- Note: Select "Yes" to confirm after the setting is completed, it shows that the disk is being formatted and waiting for the completion of RAID. If you want to cancel the RAID group, right-click and select "Cancel Mirrored Volume"/"Cancel";



To remove a RAID group, right-click on the disk to delete the volume and create a new, newly added volume.

### Mac System Operation Procedure

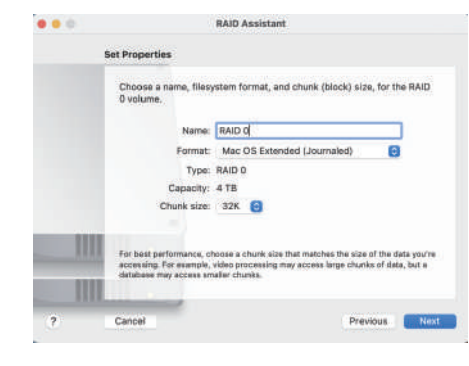
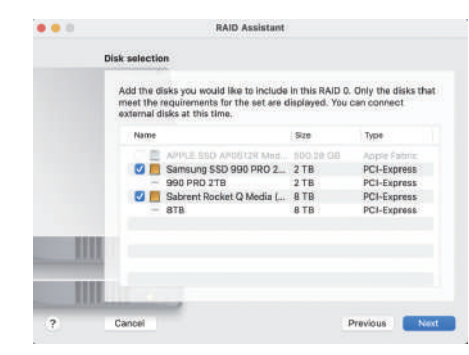
- First select the disk tool, click into the disk tool, select the upper left "File" -> RAID Assistant.



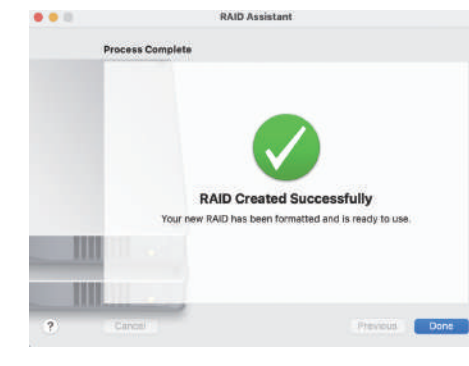
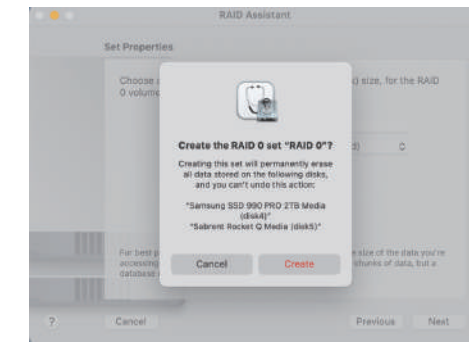
- Select the appropriate RAID mode.



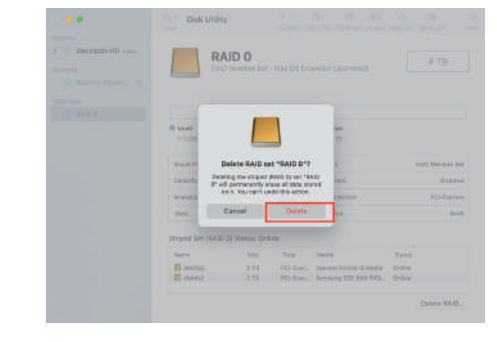
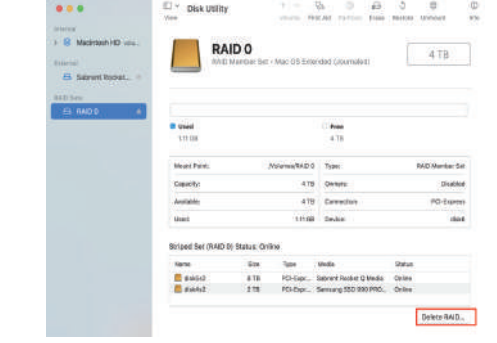
- Select the hard disks to be RAID-enabled.



- Select the RAID drives in the group, and in the lower right corner, you can choose to delete the RAID group.



- Note  
① under Windows RAID mode group time is longer, in the group RAID should keep the computer on until the group RAID completed!  
② group RAID mode is only common in the same computer system, such as MacOS RAID group on Windows systems are not universal



### Fitting requirement

- Use of unauthorized or incompatible power supplies, accessories that may cause fire, explosion or other hazards;
- Only accessories approved by the equipment manufacturer and compatible with this model can be used. If you need approved accessories, please contact customer service.

### Environmental protection

- Do not dispose of the equipment and its accessories as ordinary household garbage;
- Please comply with local laws governing the disposal of this device and its accessories and support recycling.

### Support

If you have any questions, please contact our customer support: support@acasis.com.

### Copyright

No part of this user manual may be reproduced or transmitted in any purpose, regardless in which way or by any means, electronically or mechanically, without the explicit written approval of ACASIS.

ACASIS INC. Co., Ltd  
ADD: Hongye Industrial Park, Lezhujiao Xixiang Town, Bao'an District, Shenzhen, China  
Web: http://www.acasis.com.cn/  
Email: support@acasis.com

CE FC RoHS Made in China