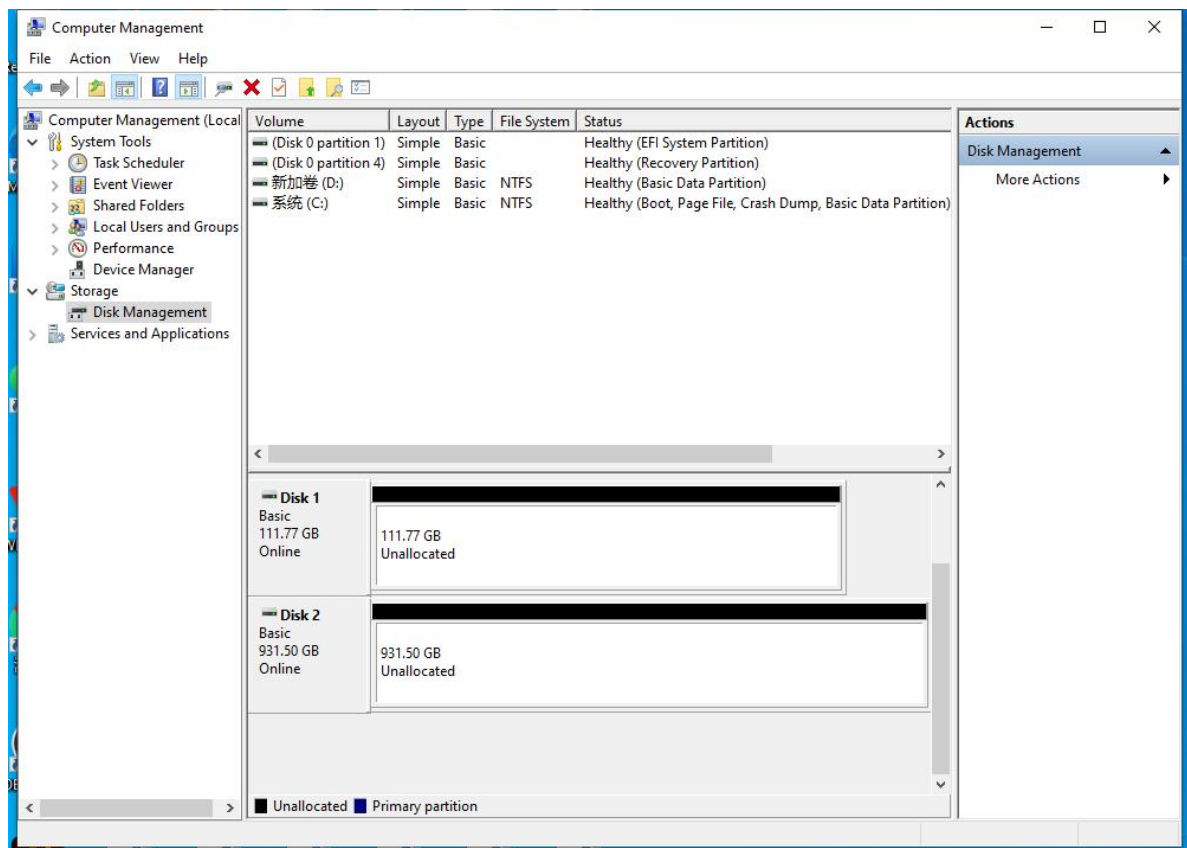


Windows Operating Process

Connect the hard drives to the computer (Hard Disk 1, 2 are external hard drives)

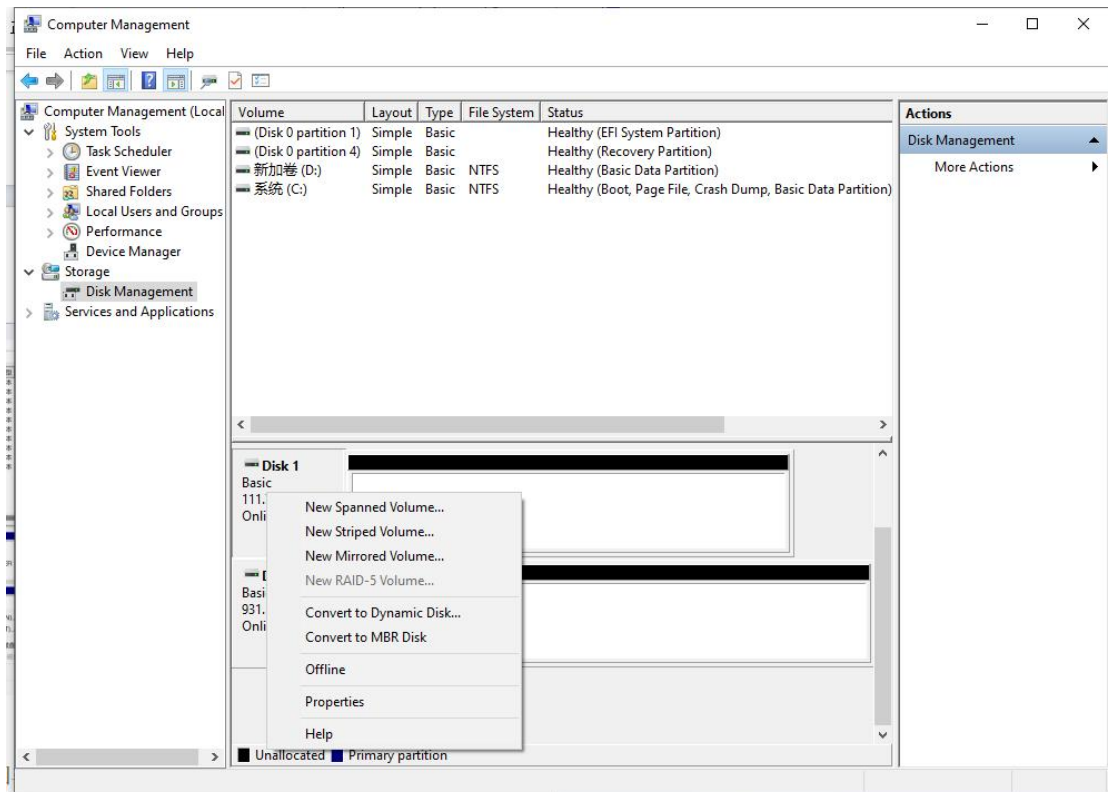
Delete the volume of the hard drives (the status will be "Unallocated") as shown in the image.



Step 1: Convert the disk to a dynamic disk

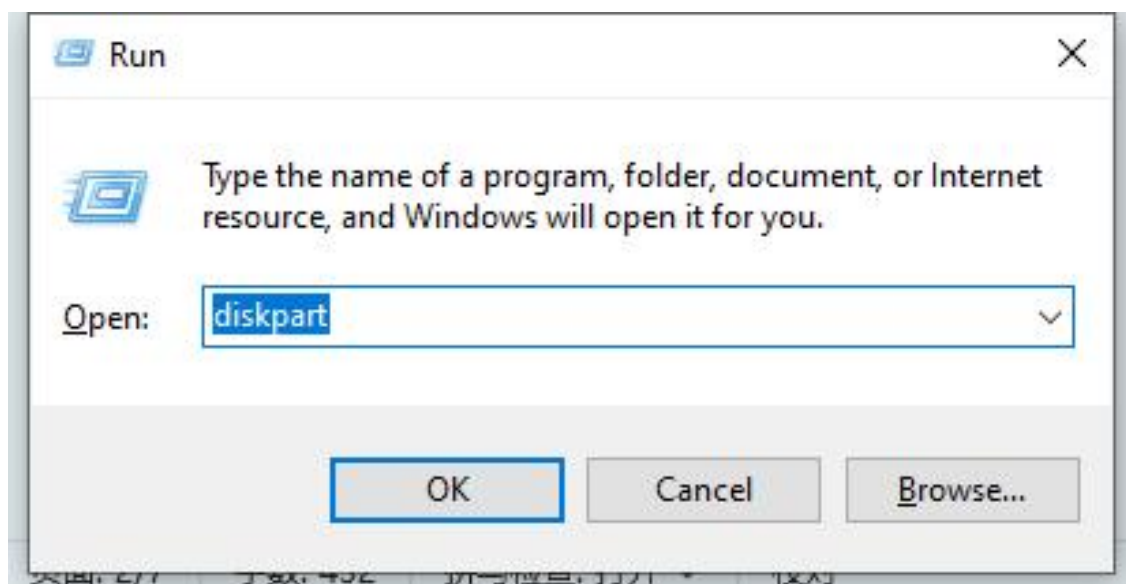
Method 1:

Right-click the disk and select "Convert to Dynamic Disk"



Method 2:

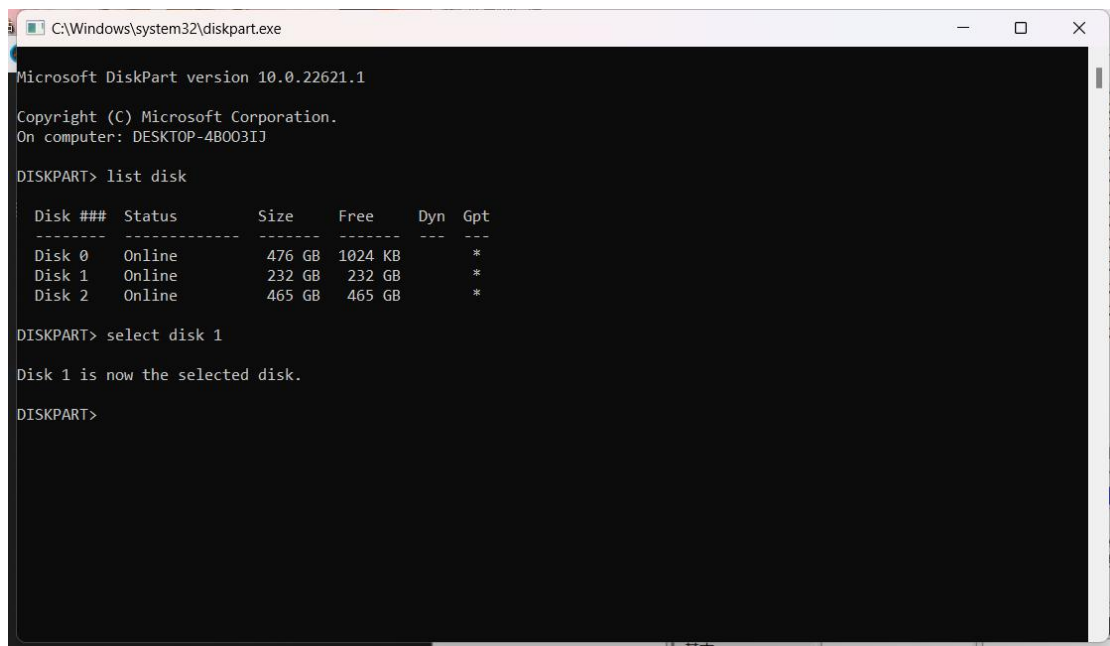
1. Press "Windows+R" and enter "Diskpart", then press Enter (not case-sensitive)



2. Type "list disk" and press Enter (commands are not case-sensitive, make sure to have the space)

3. Type "select disk 1" (note: the number 1 is the external hard disk number, use the number corresponding to your external hard disk)
4. Type "convert dynamic" to convert the disk to a dynamic disk.

Note: Perform this operation on all the external hard drives you want to set up in RAID.



```
C:\Windows\system32\diskpart.exe
Microsoft DiskPart version 10.0.22621.1
Copyright (C) Microsoft Corporation.
On computer: DESKTOP-4B003IJ

DISKPART> list disk

Disk ###  Status      Size  Free  Dyn  Gpt
-----  -
Disk 0    Online     476 GB  1024 KB  *
Disk 1    Online     232 GB  232 GB  *
Disk 2    Online     465 GB  465 GB  *

DISKPART> select disk 1

Disk 1 is now the selected disk.

DISKPART>
```

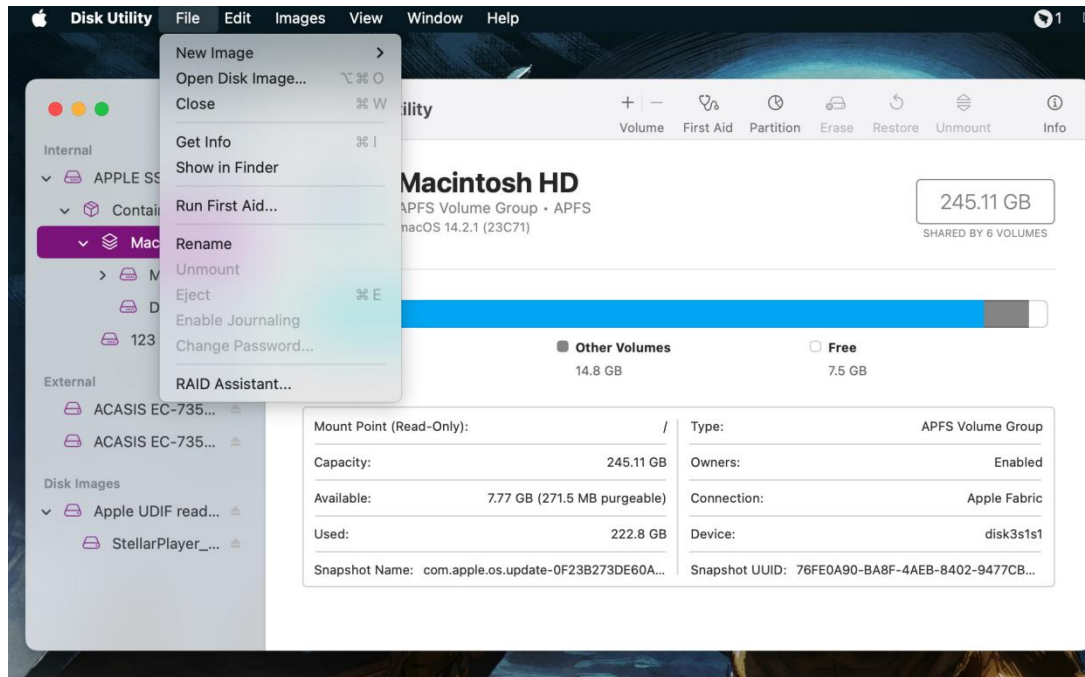
Step 2: Set up RAID

In Disk Management, right-click the "Unallocated" new volume -> New Mirrored Volume -> Next -> Select the corresponding disks -> Add -> Confirm -> Next -> Keep the default options -> Finish

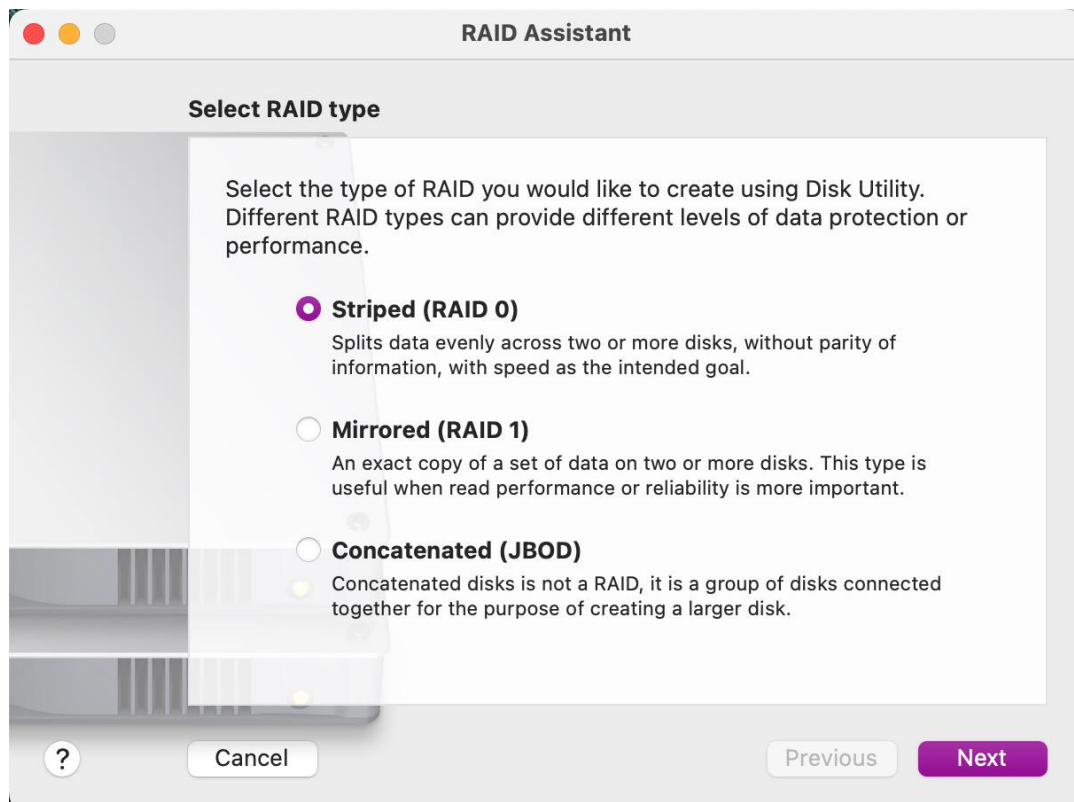
Note: After the setup is complete, select "Yes" to confirm, and wait for the disk to complete the RAID setup. If you want to remove the RAID setup, right-click the disk and delete the volume, then create a new volume.

MacOS Operating Process

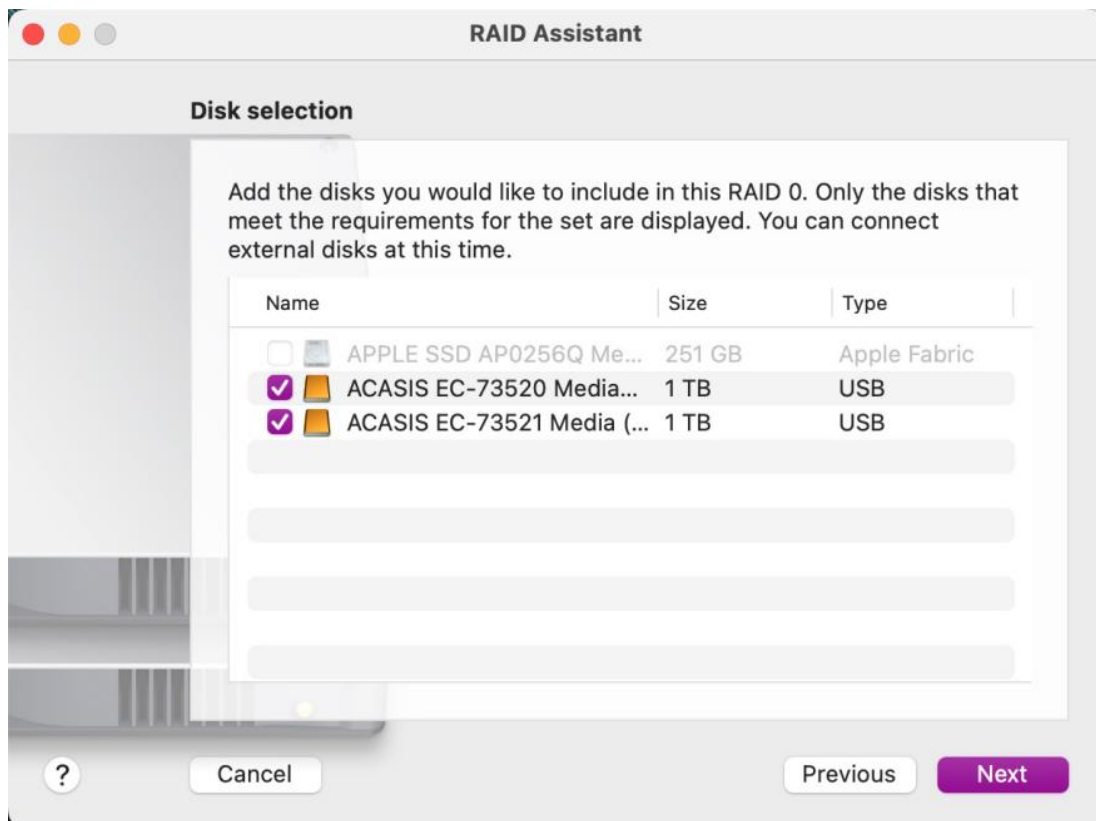
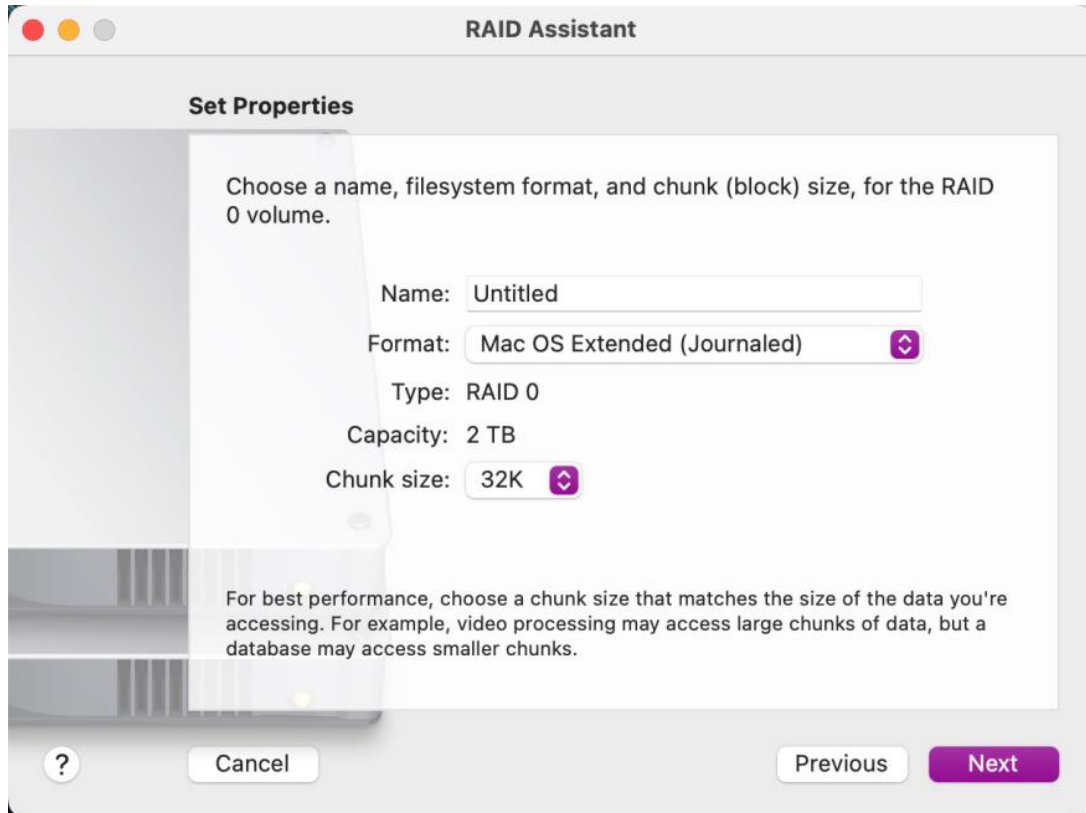
- 1、 Select “Disk Utility”, click to enter, then select “File” in the top left -> “RAID Assistant...”

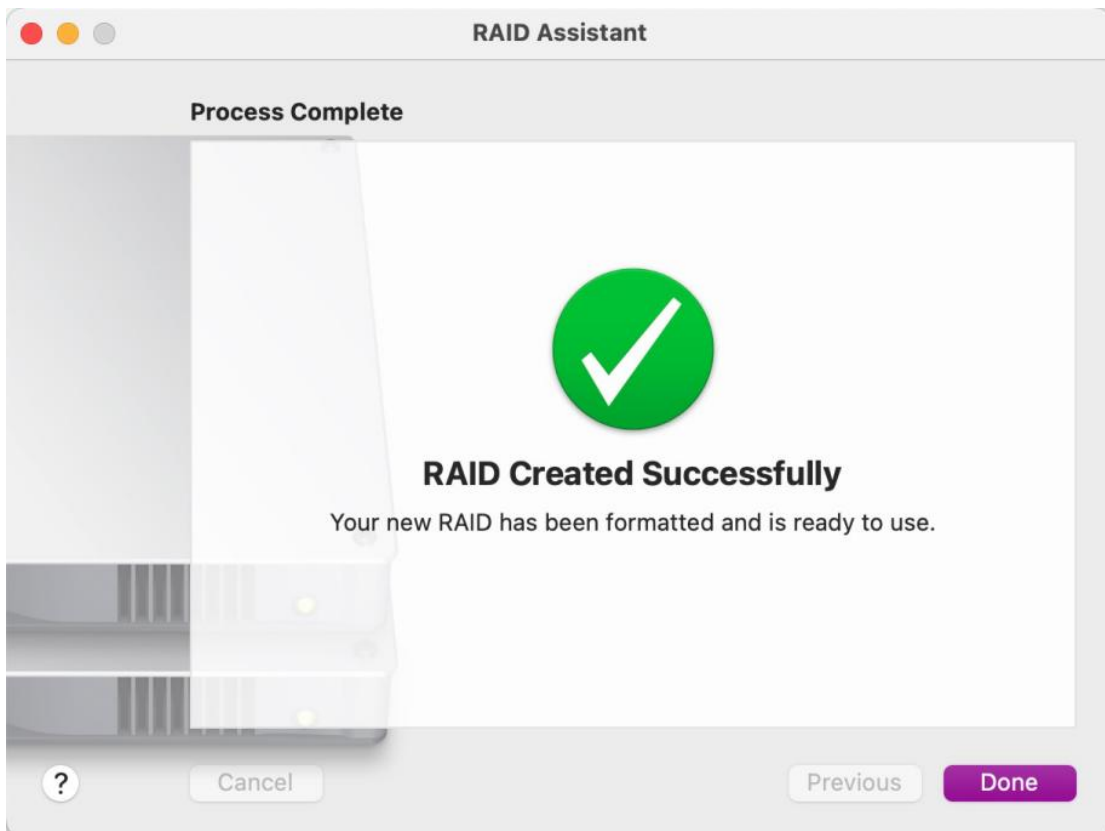
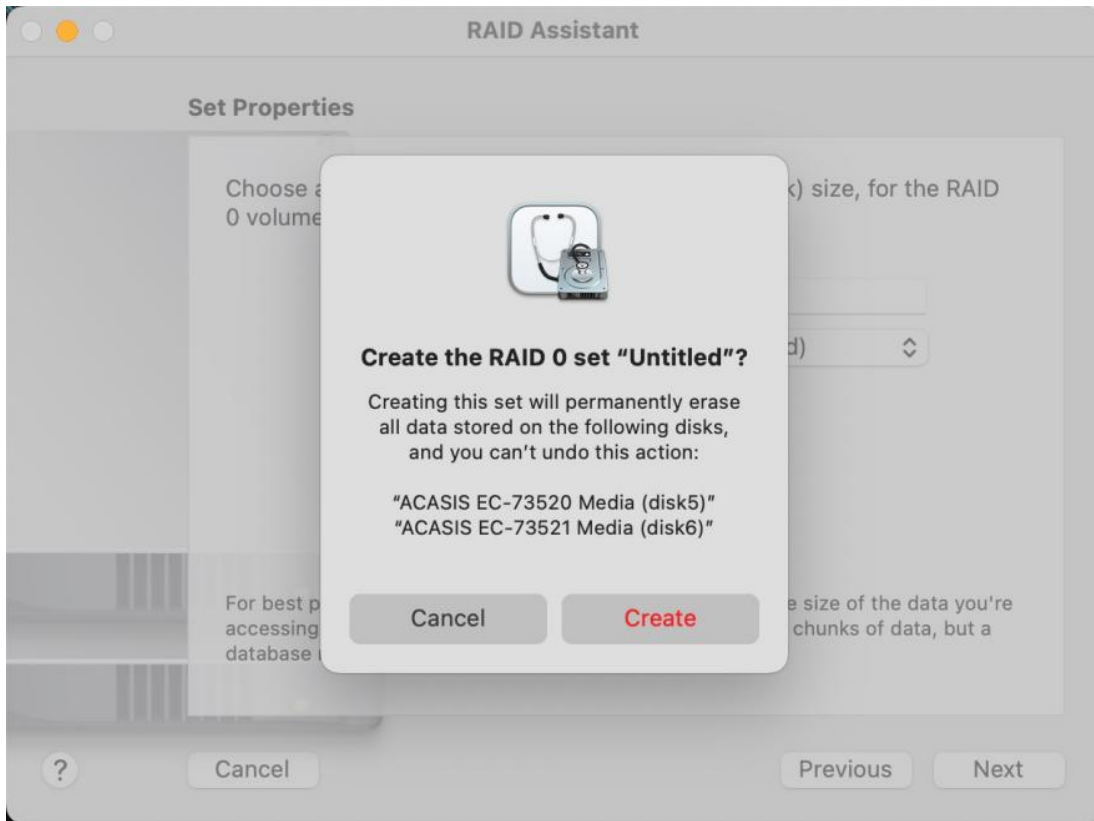


- 2、 Choose the appropriate RAID mode



3、 Select the hard drives to be used in the RAID





4、 Select the RAID set, and you can choose to delete the RAID set in the bottom right corner.

