

ACASIS

Dual NVME M.2 SSD Docking Station

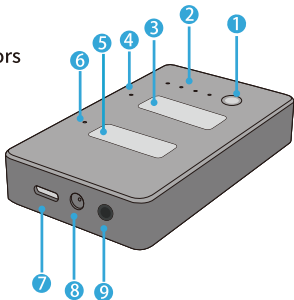


Model:M03
User Manual

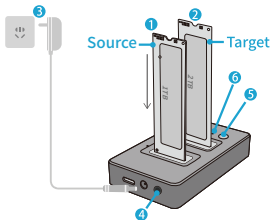
Product Features

- Compatible with PCI-e NVMe M.2 M key & B+M key SSDs
NOT COMPATIBLE with M.2 SATA/AHCI SSDS
- Read and write both SSDs simultaneously
- Support data transmission speed of up to 10Gbps
- Offline cloning without using computer
- Full aluminum case for maximum heat dissipation
- 100% tool-free design
- Support Windows 7 or later/ Mac OS 10.5 or later /
Linux Kernel 2.4 or later

- 1 Clone Button
- 2 Clone Process LED Indicators
- 3 Target SSD SLOT
- 4 Work LED Indicator
- 5 Source SSD SLOT
- 6 Work LED Indicator
- 7 Type-C
- 8 Power Port
- 9 Power Button



Off-line Disk Cloning Instruction



Target>Source

For Example:
Source



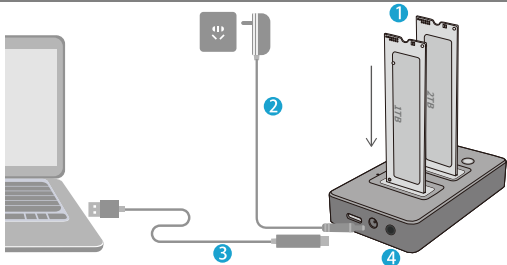
Target



Note: Please make sure the capacity of the target SSD is larger than the source SSD, otherwise the clone function will not work.

- ① Before cloning, disconnect the USB cable from the device.
- ② Put the source SSD in Slot A and target SSD in Slot B.
- ③ Connect the power adapter to the enclosure.
- ④ Press the power button.
- ⑤ Hold the clone button for 3-5 seconds until LED indicator begins to flash
- ⑥ The LED indicators show the cloning process. When all four LEDs stop flashing, the cloning is finished. This process may take a long time which mainly depends on the capacity of SSD.

SSDs Read/Write Installation Instruction



- 1 Plug the SSDs into the slot
- 2 Connect the power adapter
- 3 Connect the USB data cable with the computer
- 4 Press the power button and start to use

WARNING: Do not install any disks while the device is powered on or connected computer.

Off-line Cloning Trouble Shooting

Q: Why does my new cloned drive not show up?

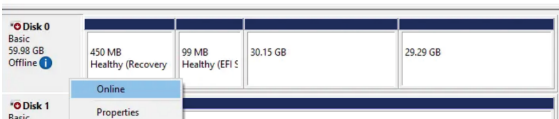
A: It mainly happens in Windows OS

The target drive goes offline happens because of signature collision between the source and target drive(they are exactly same as each other after cloned).

Solutions:

For Windows 7 or later:

- 1) Right-click This PC -> Management -> Disk Management.
- 2) Right-click on the disk that is marked as Offline or Missing. Select Online command from the drop-down menu.
- 3) On selecting the option Online, Windows will generate a new disk signature. The target drive will come back online, and both drives share the same name.



Q: Why is there unallocated space in target disk?

Disk 1 Basic 953.85 GB Online	Recovery 529 MB NTFS Healthy (ODM Partition)	99 MB Healthy (EFI System Partition)	SOURCE DRIVE (D:) 953.24 GB NTFS (BitLocker Encrypted) Healthy (Primary Partition)	
Disk 2 Basic 1863.00 GB Online	529 MB Healthy (Recovery Partition)	99 MB Healthy (EFI System Partition)	SOURCE DRIVE (E) 953.24 GB NTFS (BitLocker Encrypted) Healthy (Primary Partition)	909.15 GB Unallocated
■ Unallocated ■ Primary partition				

A: If the capacity of target drive is bigger than the source drive, the remaining space of the drive will be left as unallocated space.

Q: How can I make unallocated space available for data storage?

- 1) Open Disk Management, Right click on the unallocated partition of your newly cloned drive.
- 2) Click [Extend Volume...] in the pop up menu
- 3) Following the steps of New Simple Volume Wizard to assign the unallocated partition.

After-sales: support@acasis.com

Website: <https://www.acasis.com>

Facebook Page: <https://www.facebook.com/Acasis.support>

Acasis Club: <https://www.facebook.com/groups/acasis>

