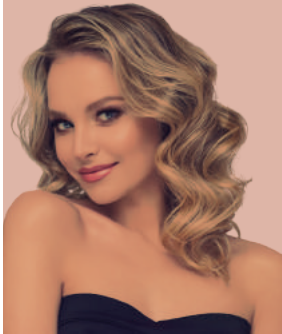


HOUSE OF EUROPEAN HAIR<sup>®</sup>  
**FOR PROS, BY PROS**

Virgin European Hair Wigs,  
Extensions, Partials,  
and Toppers



**“Hair is everything...  
It’s the difference between a  
good day and a bad day.”**  
-Phoebe Waller Bridge



**05**

Susan Sil-Stay

**06**

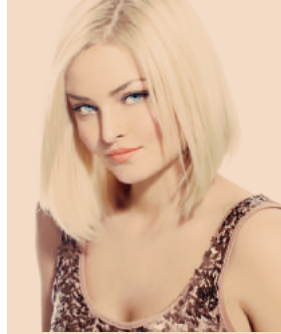
Susan Sil-Active

**07**

Susan HT  
Susan German

**08**

Samantha



**09**

Reba  
Adele

**10**

Grace  
Laura

**11**

Cara  
Nancy

**12**

Megan  
Kellie



**13**

Miranda

**15**

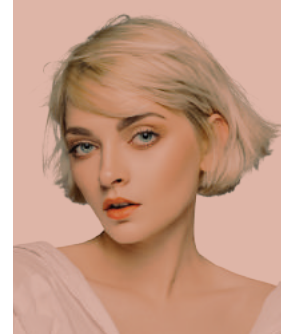
Doris French Top  
Doris Silk Top

**16**

Jenny

**17**

Reese  
Zoe



**18**

Julia  
Pat

**19**

Evelyn  
Joyce

**20**

Eve

**21**

Additional  
Offerings

**22** How to  
Measure

**23** Color  
Chart



*Wigs*

# Sil-Stay



**Susan Sil-Stay** is the pinnacle of Luxury. The hair is our finest 100% European, in a 20" overall length. This wig is perfect for customers who suffer from total hair loss.

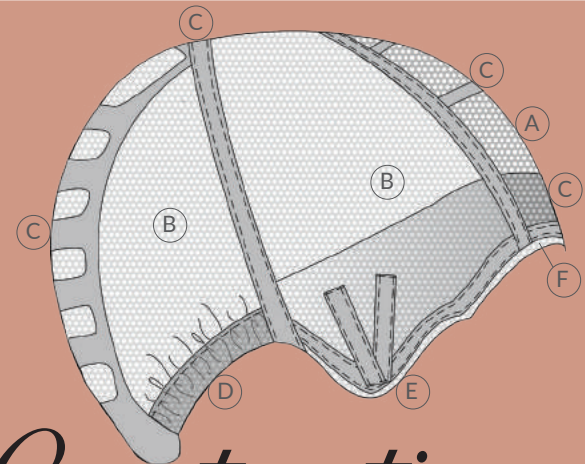
◆ Available in 3 cap sizes: M, S & XS ◆ Nape Length: 14"

◆ Overall Length: 20"

◆ Weight: 6.8oz.

◆ Top Length: 14"

◆ Cap set ring available upon request



## Construction

1. **Hand-Tied French Top w/ Silicone Panels**
  - A. **French Top**- Located at cap front and top
  - B. **Lace**- Along the crown and sides
  - C. **Silicone**- Throughout the front, sides and center back
  - D. **Elastic Ear Band**- Around the base
  - E. **Silicone V-Stay**- Sewn at the sides of the cap
  - F. **1/8" Folded Lace Front**- Along front edge

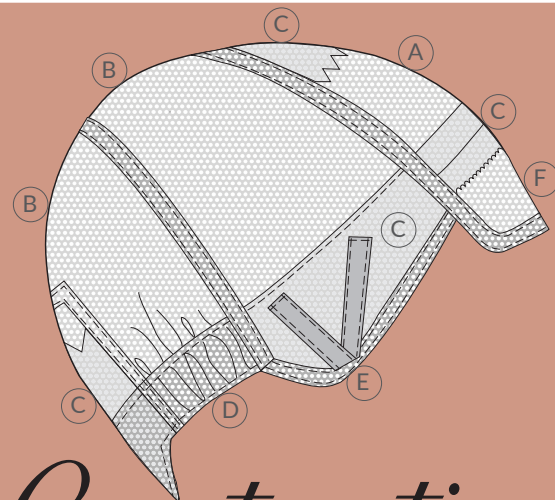
\*Caps in size XS are an excellent option for children. 5  
See page 22 for this caps Measuring Chart\*

# Sil-Active



**Susan Sil-Active** is designed for women with partial and total hair loss. The 100% European hair looks gorgeous with tons of volume. The Lace Front hairline blends like a dream.

- ◆ Available in 3 cap sizes: **M, S & XS**
- ◆ Nape Length: **12"**
- ◆ Overall Length: **20"**
- ◆ Weight: **6.8 oz**
- ◆ Top Length: **12"**



## Construction

1. **Hand-Tied Silk Top w/ Silicone Base**
- A. **Silk Top**- Located at cap front and top
- B. **Lace**- Along the crown and sides
- C. **Silicone**- Throughout the front, sides and center back
- D. **Elastic Ear Band**- Behind the ear
- E. **Silicone V-Stay**- Sewn at the sides of the cap
- F. **Lace Front**- Around the front edge

\*Caps in size **XS** are an excellent option for children.  
See page 22 for this caps Measuring Chart\*



*Susan HT*

**Susan German Hand-Tied** is an elegant option. The look is sleek yet modern. This wig offers a beautiful fullness in the back, with a hand-tied construction.

◆ Available in two sizes: **M & S**

◆ Overall Length: **20"**

◆ Top Length: **12"**

◆ Nape Length: **12"**

◆ Weight: **6.8 oz.**

◆ M. Cap Circumference: **21"-23"**

◆ S. Cap Circumference: **19"-21"**



*Susan G.*

**Susan German** is one of our most comfortable wigs. The cap is designed to stretch perfectly to the scalp.

◆ Available in two sizes: **M & S**

◆ Overall Length: **20"**

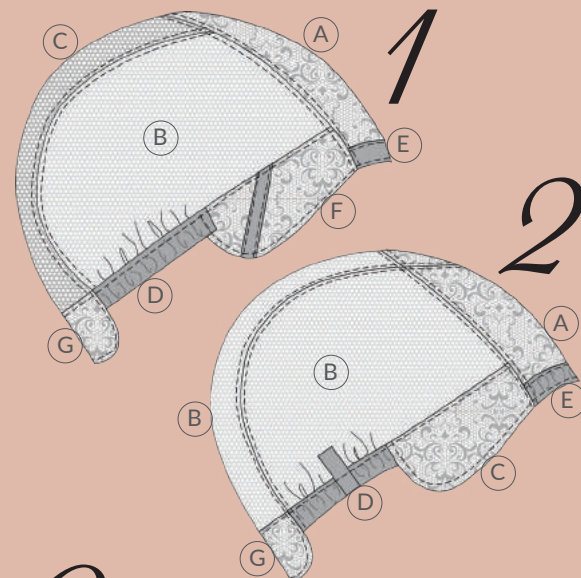
◆ Top Length: **12"**

◆ Nape Length: **12"**

◆ Weight: **6.8 oz**

◆ M. Cap Circumference: **21"-23"**

◆ S. Cap Circumference: **19"-21"**



## Construction

### 1. Susan German Hand-Tied w/ French Top

- A. **French Top**- Located at cap front & top
- B. **Lace**- Along cap sides
- C. **Stretch Lace**- Over the center back
- D. **Elastic Ear Band**- Behind the ear
- E. **1/8" Folded Lace Front**- At front edge
- F. **Tape Tab**- Located at temples
- G. **Tape Pad**- Sewn at back nape

### 2. Susan G, French Top w/ Closed Wefted Bk

- A. **French Top**- Located at center front & top
- B. **Lace**- Along cap sides and back
- C. **Tape Tab**- Located at temples
- D. **Adjustable Elastic Band**- Behind the ear
- E. **1/8" Folded Lace Front**- At front edge
- F. **Tape Pad**- Sewn at back nape

# Samantha



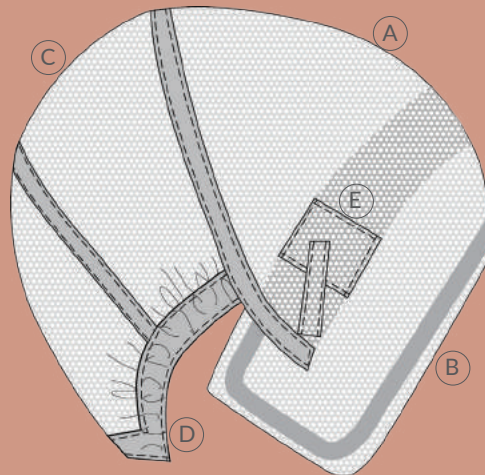
**Samantha** is one of our most luxurious wigs. You will feel instant glamour the second you put it on. It is made with our softest premium Remi hair in color #60 and #24 rooted #6/4.

◆ Available in size: **M**

◆ Overall Length: **22"**

◆ Top Length: **18"**

◆ Nape Length: **18"**



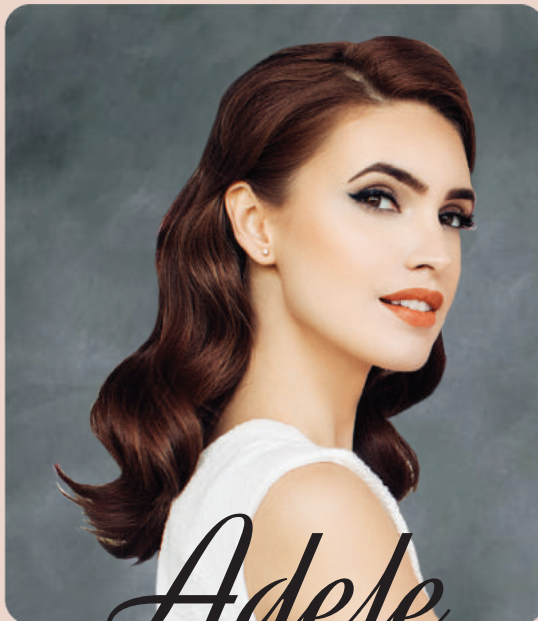
## Construction

- 1. Samantha- All Lace Cap with a Rooted System**
  - A. Lace-** Located at the front & top of cap
  - B. Lace Front-** Along the front edge
  - C. Double Layer Lace-** Sewn into the crown of the cap
  - D. Elastic Ear Band-** Behind the ear
  - E. Tap Tab-** Located at the cap sides





*Reba*



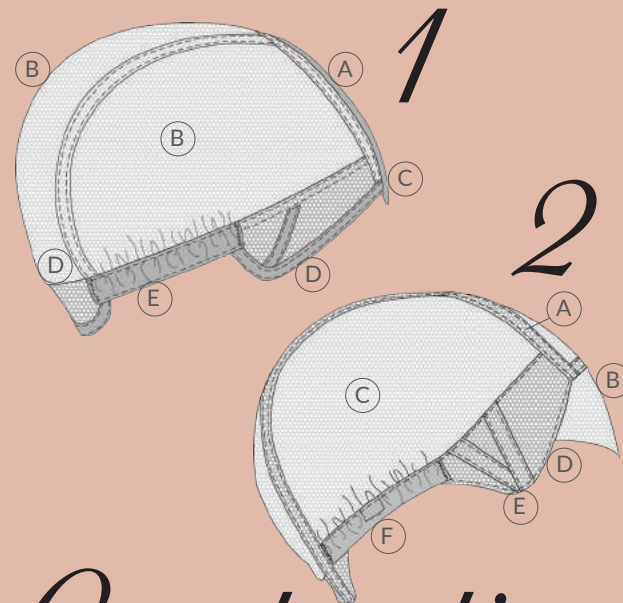
*Adele*

**Reba** offers a natural hairline and realistic scalp appearance. It has extra room in the back area and is an excellent solution for wearers who experience hair loss on top and hair growth on the sides/upper nape areas.

- ◆ Available in one size: **M**
- ◆ Overall Length: **20"**
- ◆ Top Length: **12"**
- ◆ Nape Length: **12"**
- ◆ Weight: **5.2oz**
- ◆ Cap Circumference: **21"-23"**

**Adele** is the newest addition to HEH. This wig is a good fit for wearers who experience hair loss along the top/front of the hairline. It's extremely natural looking.

- ◆ Available in one sizes: **M**
- ◆ Overall Length: **17"**
- ◆ Top Length: **11"**
- ◆ Nape Length: **11"**
- ◆ Weight: **5.4oz**



## *Construction*

### 1. Reba- Lace Fnt w Mono Top & Wefted Bk

- A. **Fine Mono-** Top panel of cap
- B. **Lace-** Throughout the crown and sides
- C. **Lace Front-** Edge of front cap
- D. **Tape Tab-** Located at temples & nape
- E. **Elastic Ear Band-** Behind the ear

### 2. Adele- Lace w/ Tape Tabs & Fnt Comb

- A. **Double Layer Lace-** Along the top cap
- B. **Lace Front-** Located at front of cap
- C. **Lace-** Throughout the cap body
- D. **Tape Tab-** Located at temples
- E. **Metal V-Stay-** Along the temple edges
- F. **Elastic Ear Band-** Behind the ear



*Grace*



*Laura*

**Grace** is the same stunning quality as sister wig Susan German, but in a shorter version. The shoulder length hair gives this piece a fresh, modern look.

**Laura** is extremely polished with a confident appearance. This scalp finish is natural while the fit is remarkably comfortable.

◆ Available in one size: **M**

◆ Available in one size: **M**

◆ Overall Length: **15"**

◆ Overall Length: **14"**

◆ Top Length: **12"**

◆ Top Length: **9"**

◆ Nape Length: **7.5"**

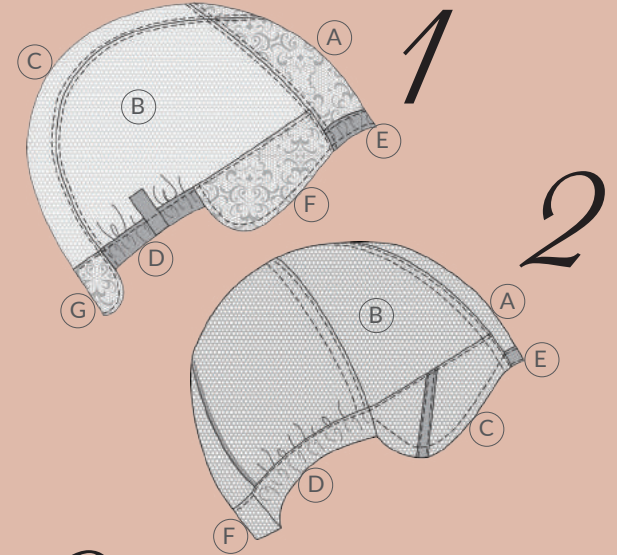
◆ Nape Length: **5.5"**

◆ Weight: **4.9 oz.**

◆ Weight: **3.9 oz.**

◆ Cap Circumference: **21"-23"**

◆ Cap Circumference: **21"-23"**



## *Construction*

### 1. Grace- French Top w/ Stretch Cap

- A. **French Top-** At center front cap & top
- B. **Lace-** Along cap sides
- C. **Stretch Lace-** Over the center back
- D. **Elastic Ear Band-** Behind the ear
- E. **1/8" Folded Lace Front-** At front edge
- F. **Tape Tab-** Located at temples
- G. **Tape Pad-** Sewn at back nape

### 2. Laura- Hand-Tied French Top w/ Lining

- A. **French Top-** At center front cap & top
- B. **Lace-** Along cap sides
- C. **Tape Tab-** Located at temples
- D. **Adjustable Elastic Band-** Behind the ear
- E. **1/8" Folded Lace Front-** At front edge
- F. **Tape Pad-** Sewn at back nape



*Cara*



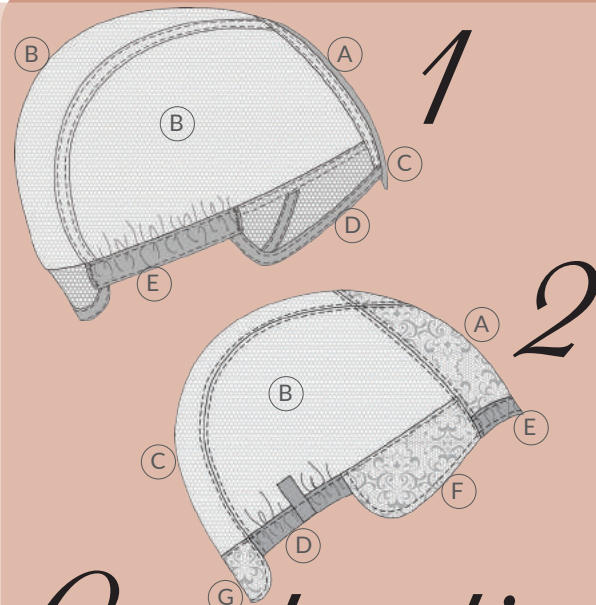
*Nancy*

**Cara** brings realism, fullness and density to your look. The lace front provides a beautiful, hairline while the hand-tied full mono top gives a natural scalp appearance.

- ◆ Available in one size: **M**
- ◆ Overall Length: **14"**
- ◆ Top Length: **11"**
- ◆ Nape Length: **6"**
- ◆ Weight: **3.5 oz.**
- ◆ Cap Circumference: **21"-23"**

**Nancy** is a fun piece. This beautiful bouncy hair looks amazing straight or curled. It's hair volume brings a youthful vibe.

- ◆ Available in one size: **M**
- ◆ Overall Length: **10"**
- ◆ Top Length: **8"**
- ◆ Nape Length: **2.5"**
- ◆ Weight: **3.5 oz.**
- ◆ Cap Circumference: **21"-23"**



*Construction*

1. **Cara- All Hand Tied, Lace Front w/ Mono Top & Stretch Bk**
  - A. **Fine Mono-** Top panel of cap
  - B. **Lace-** Throughout the crown and sides
  - C. **Lace Front-** Edge of front cap
  - D. **Tape Tab-** Located at temples
  - E. **Elastic Ear Band-** Behind the ear
2. **Nancy- French Top w/ Stretch Cap**
  - A. **French Top-** Located at top and front cap
  - B. **Lace-** Along cap sides
  - C. **Stretch Lace-** Over the center back
  - D. **Elastic Ear Band-** Behind the ear
  - E. **1/8" Folded Lace Front-** At front edge
  - F. **Tape Tab-** Located at temples
  - G. **Tape Pad-** Sewn at back nape



*Megan*



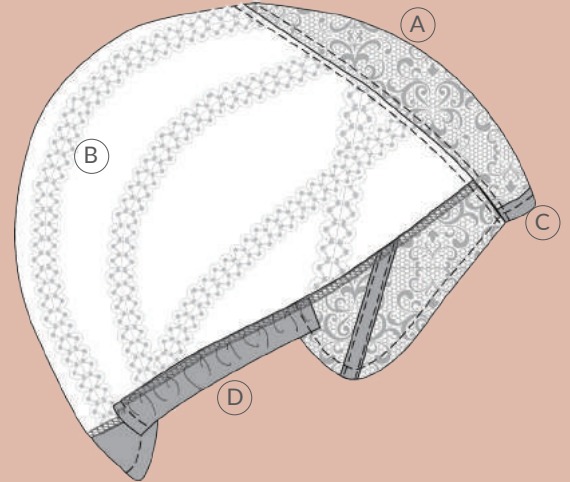
*Kellie*

**Megan** is a timeless option. The hairstyle is extremely versatile. It's polished, casual look dresses up and down perfectly.

- ◆ Available in one size: **M**
- ◆ Overall Length: **15"**
- ◆ Top Length: **8"**
- ◆ Nape Length: **6"**
- ◆ Weight: **3.8 oz.**
- ◆ Cap Circumference: **21"-23"**

**Kellie** shares the same specifications as the Megan but in a shorter hair version. Designed with flattering face framing layers, this wig is a perfect combination of chic and sassy.

- ◆ Available in one size: **M**
- ◆ Overall Length: **10"**
- ◆ Top Length: **6"**
- ◆ Nape Length: **2"**
- ◆ Weight: **3.2 oz.**
- ◆ Cap Circumference: **21"-23"**



## *Construction*

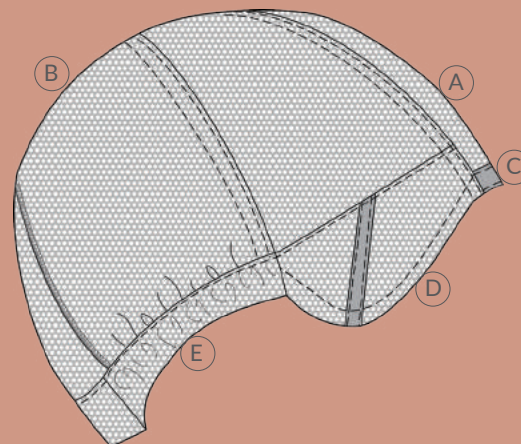
### 1. **Megan & Kellie- Left Parted Mono Top with Open Back Wefts**

- A. **Fine Mono-** Front left panel of cap
- B. **Open Wefts-** Throughout crown, sides and back
- C. **1/8" Lace Front-** Edge of front cap
- D. **Elastic Ear Band-** Behind the ear



**Miranda** is perfect for those looking for a natural yet mature look in a variety of grey percentages.

- ◆ **Available in one size: M**
- ◆ **Overall Length: 13"**
- ◆ **Top Length: 10"**
- ◆ **Nape Length: 5"**
- ◆ **Weight: 4.5oz**



## *Construction*

- 1. Hand-Tied French Top w/ Two Clips and a Comb**
  - A. **French Top**- Located at center front cap
  - B. **Double Layer Stretch Lace**- Along the crown & sides
  - C. **1/8" Lace Front**- Edge of front cap
  - D. **Tape Tab**- Located at temples
  - E. **Elastic Ear Band**- Behind the ear



*Partial Pieces*



## Doris French

**Doris French Top** is a classically beautiful partial piece. The variety of hair lengths make this system extremely adaptable. This unit will add extra coverage to thinning parts by taping, clipping, or bonding.

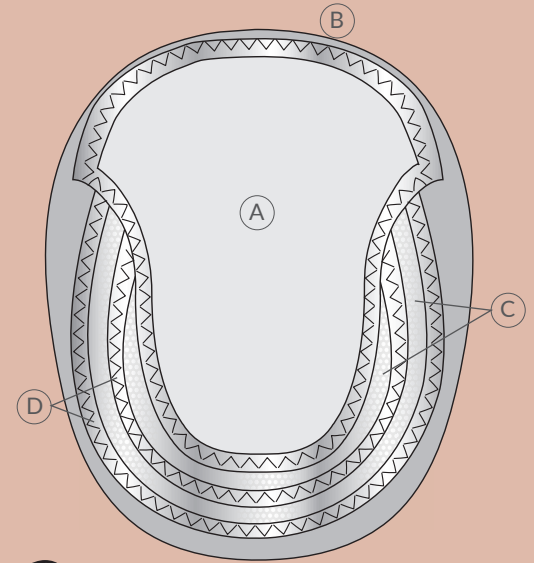
- ◆ Available in 12" European hair
- ◆ Also available in 18" Remy hair
- ◆ Wide range of color offering
- ◆ Bob length: 12" top & 10" bk
- ◆ Sizes: 5" X 6" (M) & 6" X 7.5" (L)
- ◆ Cut-away system



## Doris Silk

**Doris Silk Top** has a double-layered top. It is one of our high-end options for customers with little to no hair. Customers love the volume they get with this piece.

- ◆ Available in 18" Remy hair
- ◆ Wide range of color offering
- ◆ Sizes: 5" X 6" (M) & 6" X 7.5" (L)
- ◆ Cut-away system



## Construction

1. **Doris French Top-Triple Layer French Top w/ PU Sections for Grip**
  - A. **French Top**- Throughout the cap
  - B. **1/8" Lace Front**- Edge of front cap
  - C. **Lace**- Between the PU layers
  - D. **Polyurethane**- Outer layers for grip
2. **Doris Silk Top- Double Layer Silk Top w/ PU Sections for Grip**
  - A. **Silk Top**- Throughout the cap
  - B. **1/8" Lace Front**- Edge of front cap
  - C. **Lace**- Between the PU layers
  - D. **Polyurethane**- Outer layers for grip

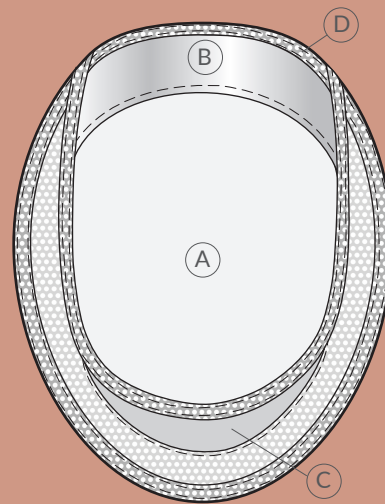


**Jenny** is one of our most sophisticated top pieces. The long, lustrous hair is made with our softest 18" premium Remy.

◆ **Weight: 5.6oz**

◆ **Available in large base (6" x 7.5") with a 1" polyurethane trim and 5 clips.**

◆ **Available in 15 colors: 1B, 2, 4, 6, 8, 10, 12, 14, 16, 24, 27, 31, 33, 613, 24/14/12.**



## *Construction*

- 1. Triple-Layer French Top w/ Polyurethane**
  - A. French Top-** Top of cap w/ 5 clips around the unit
  - B. Polyurethane-** Located in a 1" strip around the front, sides and back
  - C. Lace-** Along the back
  - D. 1/8" Lace Front-** Edge of front cap





Reese



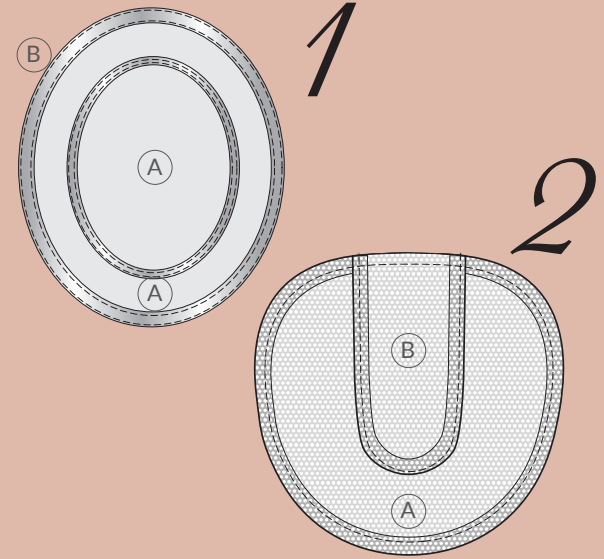
Zoe

**Reese** is one of our most popular toppers. This versatile piece will add the perfect amount of coverage and fullness.

- ◆ Overall Length: 14"
- ◆ Size: 5.5" x 6.5"
- ◆ 4 Clips
- ◆ Weight: 2.3 oz

**Zoe** offers beautiful volume. The center part looks natural yet modern.

- ◆ Overall Length: 14"
- ◆ Size: 5.5" x 5.5"
- ◆ 3 Clips
- ◆ Weight: 2.0 oz



## Construction

1. **Reese- Hand-Tied Fine Mono Top w/ Four Clips for Grip**  
 A. **Fine Mono-** Throughout the topper  
 B. **3/4" Polyurethane-** Around the topper
2. **Zoe- Hand-Tied Fine Mono with Welded Nylon and Three Clips for Grip**  
 A. **Welded Nylon-** Throughout the topper  
 B. **Fine Mono-** Along the front center part of the topper



*Julia*



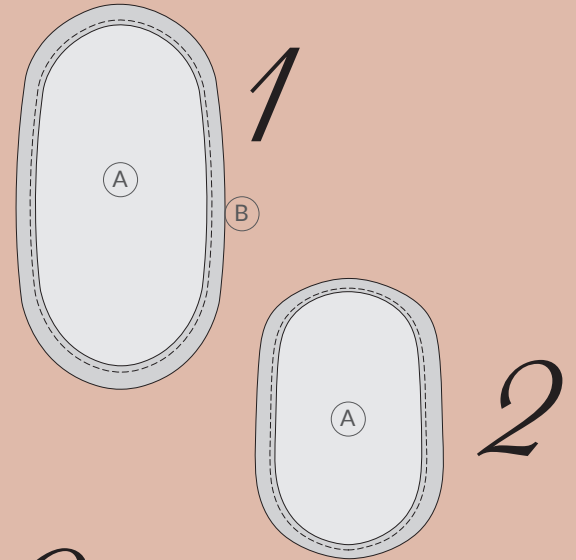
*Pat*

**Julia** is a great option for women who are looking for a full coverage top piece. It provides beautiful body to thinning hair.

- ◆ Overall Length: 12"
- ◆ Size: 2.75" x 6"
- ◆ 4 Clips
- ◆ Weight: 1.7oz

**Pat** is the sister top piece to Julia. This unit is also 12" long, but the base is smaller. The appearance is elegant and natural

- ◆ Overall Length: 12"
- ◆ Size: 2.75" x 4.75"
- ◆ 2 Clips
- ◆ Weight: 1.2oz



## *Construction*

- 1. Julia- Fine Mono Base with Four Clips for Additional Security**
  - A. Fine Mono- Throughout the topper
  - B. 3/8" Polyurethane- Around the cap perimeter
- 2. Pat- All Skin Base with Non-Slip Finish and Two Clips**
  - A. Skin- Throughout the topper



*Evelyn*

**Evelyn** is a great topper for ladies who are looking for a light and breathable piece. The look is casual with a slight edge. It blends beautifully with your hair.

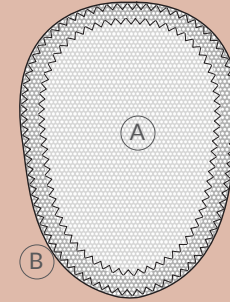
- ◆ Overall Length: 10"
- ◆ Size: 5" x 7"
- ◆ 4 Clips
- ◆ Weight: 1.6oz



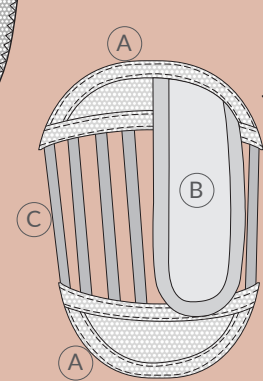
*Joyce*

**Joyce** offers beautiful volume. The appearance is natural yet modern. The hair length is very flattering and hits just above the jaw line.

- ◆ Overall Length: 9"
- ◆ Size: 5.7" x 4.1"
- ◆ 4 Clips
- ◆ Weight: 1.2oz



1



2

## Construction

### 1. Evelyn- Welded Nylon Topper

- A. **Welded Nylon**- Throughout the topper
- B. **Double Layer Welded Nylon**- Along the edge of the topper

### 2. Joyce- Hand-Tied Skin Integration Base

- A. **Fine Mono**- Throughout the topper
- B. **Skin**- Left parted section of topper
- C. **Ribbon**- Connecting the top and bottom topper



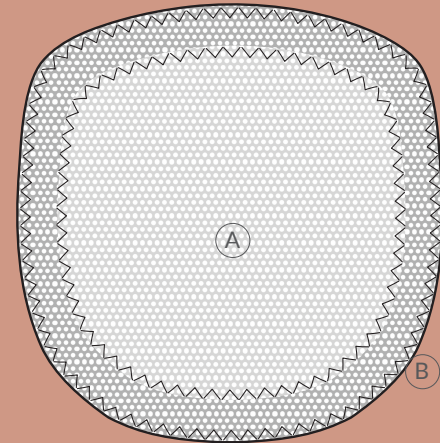
**Eve** is effortlessly chic. This piece exudes confidence. It adds just the right amount of fullness to your existing hair.

◆ **Overall Length: 8"**

◆ **Size: 5.5" x 5.5"**

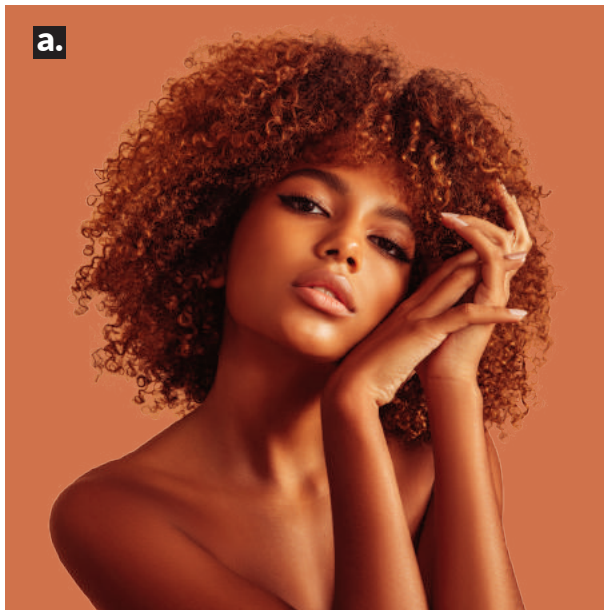
◆ **3 Clips**

◆ **Weight: 1.4oz**



## *Construction*

- 1. Welded Nylon Base with Three Clips for Grip**
  - A. Single Layer Welded Nylon-** Throughout the topper
  - B. Double Layer Welded Nylon-** Around the perimeter of the topper



## ADDITIONAL OFFERINGS

---

HairArt/House of European Hair offers more than beautiful wigs and toppers. We supply everything you need to help you achieve your hair goals.

### a. PERMS

We can perm all hair in multiple curl patterns to match your style.

---

### b. CUSTOM WIGS

We can help you create the wig of your dreams.

---

### c. HAIR WRAPS

Quickly add fullness to your existing bun.

---

### d. H3000 HEAT BRUSH

Create your own smooth and glossy looks.

---

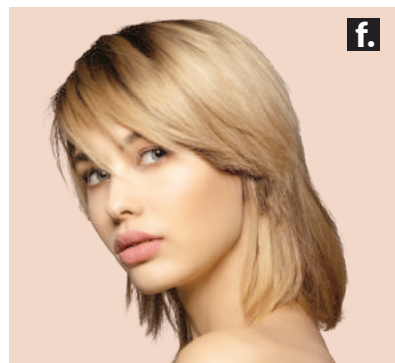
### e. TURBAN

Protect your hair while running errands or use for sleeping.

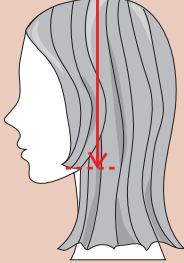
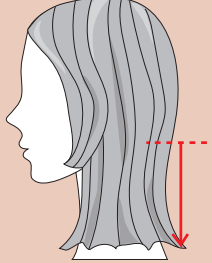
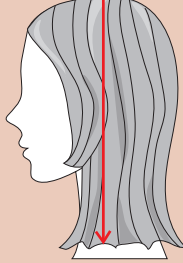
---

### f. CLIP-IN BANGS

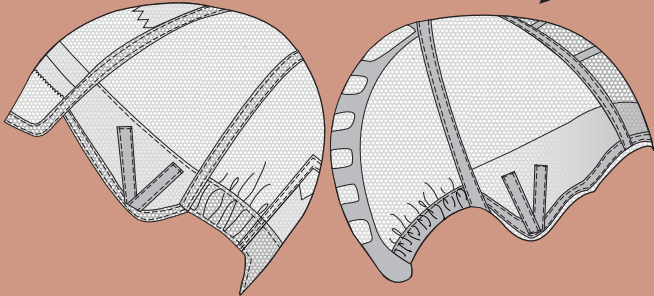
Quickly add attractive face framing bangs.



# How to Measure Hair Length

Top Length	Nape Length	Overall Length
 <p>Measure from the crown of the head to the end of the first layer of hair. If the hair is layered this measurement will be shorter than the overall length</p>	 <p>Measure from the nape of the neck to the end of the hair.</p>	 <p>Measure from the crown of the head to end of the longest layer of hair.</p>

## Silicone Caps



### Susan Sil-Stay & Sil-Active Measurement Guide for Medium, Small, and X-Small Caps

Medium (Average) Cap Measurements				
Circumference	Front - Nape	Ear - Crown - Ear	Ear - Front - Ear	Temple - Back - Temple
21" (53.3cm)	13 1/4" (33.6cm)	12 1/4" (31.1cm)	11 5/8" (29.5cm)	15" (38.1 cm)
Small (Petite/Adult) Cap Measurements				
Circumference	Front - Nape	Ear - Crown - Ear	Ear - Front - Ear	Temple - Back - Temple
20 1/2" (52.1cm)	12 3/4" (32.4cm)	11 3/4" (29.8cm)	11 1/2" (29.2cm)	14 3/4" (37.5cm)
Extra Small (Child) Cap Measurements				
Circumference	Front - Nape	Ear - Crown - Ear	Ear - Front - Ear	Temple - Back - Temple
19 3/4" (50.2cm)	12" (30.5cm)	11 5/8" (29.5cm)	10 5/8" (27cm)	14 1/2" (36.8cm)



# Ladies ColorChart



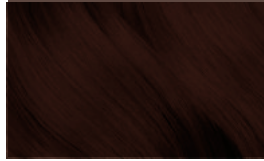
Off Black  
1B



Dk. Brown  
2



Med. Reddish Brn  
4



Dk. Auburn  
33



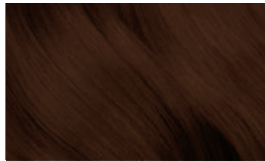
Med. Auburn  
31



Lt. Auburn  
10



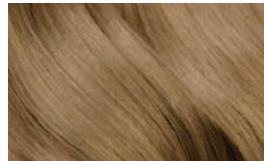
Chestnut Brown  
6



Med. Ash Brn  
8



Lt. Golden Brn  
12



Lt. Ash Brn  
14



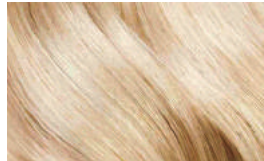
Dk. Honey Blonde  
16



Honey Blonde  
27



Pale Golden Blonde  
24

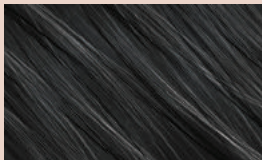


Beige Blonde  
613

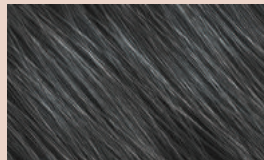
**-Custom Color Available-**  
• Highlights or Lowlights • Rooted or Tipped Colors • Ombre or Balayage •  
Contact us for additional custom color costs.  
Color rings available.

## Silver Collection

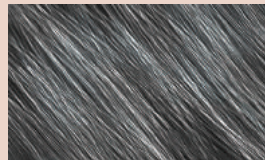
- Our Silver Collection is only available in Evelyn & Miranda.
- Print & screen variations can affect color viewing.
- Please order a color ring for 100% certainty.



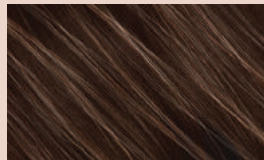
1B + 30 % Gray  
1B30



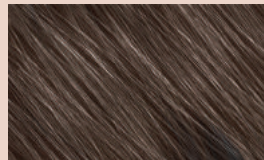
1B + 50 % Gray  
1B50



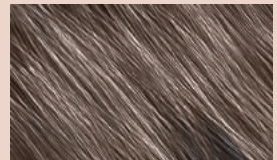
1B + 70 % Gray  
1B70



6 + 30 % Gray  
630



6 + 50 % Gray  
650



6 + 70 % Gray  
670



**1888.HAIRART (1.888.424.7278)**

**IN STOCK, SHIPPING  
SAME AND NEXT-DAY FROM CALIFORNIA**

*Can't get service for client wigs and hair pieces? WE ARE ACCEPTING REPAIRS!*

**House of European Hair 400 W. 157th St. Gardena Ca 90248**

**service@houseofeuropeanhair.com**

**Sales: Nancy B. (310)817.6645 & Johanna B. (310)928.7657**



**@HouseOfEuropeanHair houseofeuropeanhair.com**