



# MIENS

FOR PROS BY PROS

**WE HAVE  
HAIR!**

HANDCRAFTED SYSTEMS WITH  
**100% EUROPEAN HAIR**

**"IT'S  
ALL  
ABOUT  
THE  
HAIRLINE"**

## CONTENTS



**03**

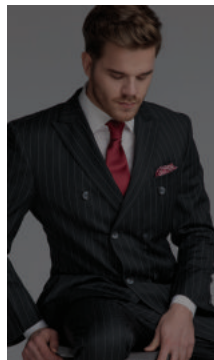
**BLONDE  
NATURAL**

**04**

**VIKTOR  
HANDCRAFTED**

**05**

**WILLIAM  
EFFORTLESS**



**06**

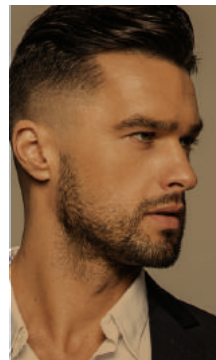
**TONY  
BREATHABLE**

**07**

**JAKE  
DISCRETE**

**08**

**POLO  
MODERN**



**09**

**ETHAN  
CONTEMPORARY**

**10**

**MARK  
DEFINED**

**11**

**LEO  
CONFIDENT**



**12**

**LOGAN  
LIGHTWEIGHT**

**13**

**RYAN  
VOLUME**

**14** **COLOR  
CHART**

**15** **DIGITAL  
PARTNERS**

BLONDES

## NOT ALL BLONDES ARE CREATED EQUALLY!

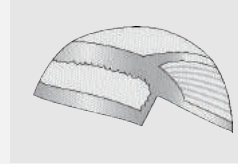
OUR BLONDE HAIR IS HAND-SELECTED TO ENSURE  
OUR SYSTEMS ARE ALWAYS STRONG YET SOFT.  
BLONDE TONES ARE ALWAYS NATURAL, NEVER BLEACHED!



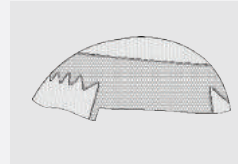
### GORGEOUS GRAYS FOR SILVER FOXES

Add some distinction to your look by including gray! We use real human grays for all systems with more than 30% coverage. A system with 5%, 10%, and 20% gray contain synthetic gray. Synthetic gray is an excellent choice if you plan on coloring the piece.

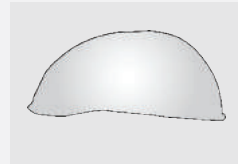
## CAP TYPES



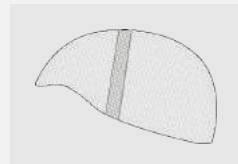
**SWISS LACE** - SOFT, FINE NETTING MATERIAL WITH LARGER HOLES. Swiss Lace is considered more delicate than French Lace. The color blends seamlessly with the natural scalp.



**FRENCH LACE** - THICK AND DURABLE NETTING WITH SMALLER HOLES THAN SWISS LACE. The material is slightly denser and usually made of a viscose composite fiber. The color also matches the scalp.



**THIN SKIN** - A TRANSLUCENT POLYURETHANE COMPOSITE MATERIAL made to resemble human skin/scalp and used on hair systems around the edges of the front and back hairlines and full base caps for men. Hair is V-looped into this material and can be installed with glue or tape.



**MONO - MONO REFERS TO MONOFILAMENT.** Monofilament is made of a very fine sheer lace-like material. A Mono Top is intended to boost hair volume from the cap. It's multi-directional, creates a very realistic scalp appearance and excellent hair movement. It's made by tying or sewing hair into sections either at the parting, the top, or the crown areas.



# VIKTOR

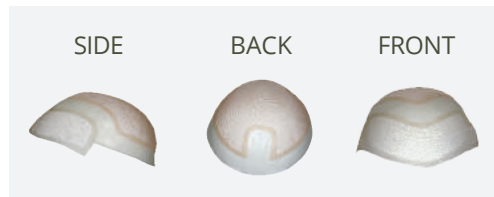
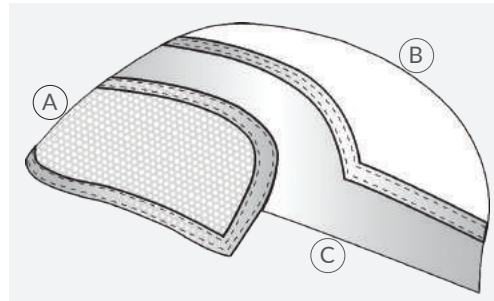
## UNCOMPROMISED QUALITY

HANDCRAFTED WITH ROOTLESS KNOTTING.

VIKTOR

## HANDCRAFTED

This system is perfect for an active guy who enjoys the versatility of lace and structure of mono. With 4 base measurements: 5x7", 6x8", 7x9" & 8x10" and a 6" length of truly European Human hair. This popular system has become one of the most sought after models on the market!

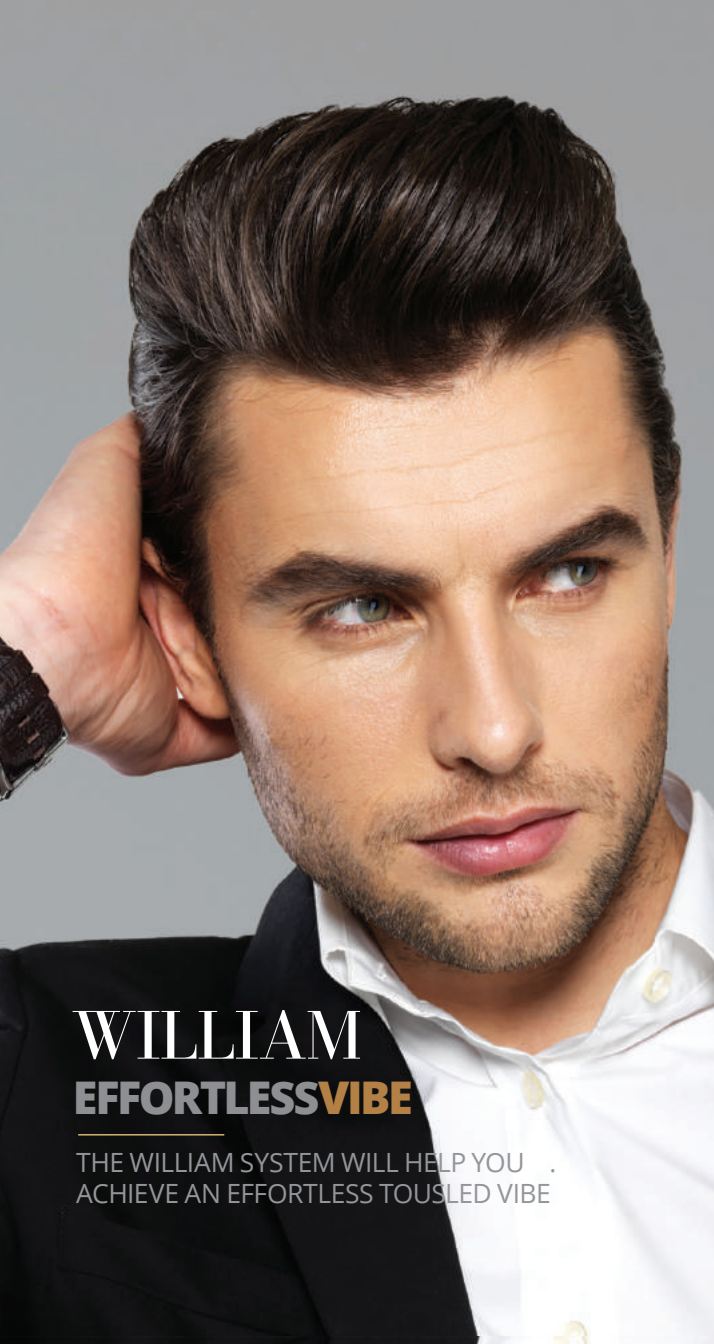


## VIKTOR

**Fine Mono Top with Swiss Lace Front and Polyurethane Base**

- (A) **Swiss Lace**- Located at front edge
- (B) **Fine Mono**- Top of cap
- (C) **Polyurethane**- Along cap perimeter

- Rootless Knots- Swiss Lace front & Fine Mono top
- Medium Density
- 100% European Human Hair
- Hair Length 6" | Weight 2.3oz
- Lifespan 6-7 months
- Available in sizes: 5"x 7", 6"x 8", 7"x 9", 8"x 10"



# WILLIAM

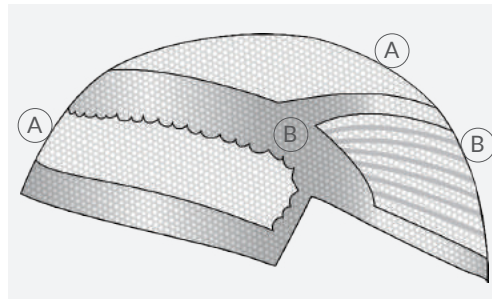
## EFFORTLESSVIBE

THE WILLIAM SYSTEM WILL HELP YOU  
ACHIEVE AN EFFORTLESS TOUSLED VIBE



## EFFORTLESS

This unit adapts perfectly to you. The lace front provides a seamless hair line while the polyurethane base gives extra security and hold.



## WILLIAM

Lace Top with Swiss Lace Front and Polyurethane Base

- (A) **Swiss Lace**- Located at front & crown
- (B) **Polyurethane**- Cutaway back panel & sides

- Swiss lace front & top
- 1" Polyurethane front
- Cutaway system
- 100% European Human Hair
- Hair Length 6" | Weight 2.3oz
- Lifespan 6-7 months
- Available in size: 8"x 10"



# TONY

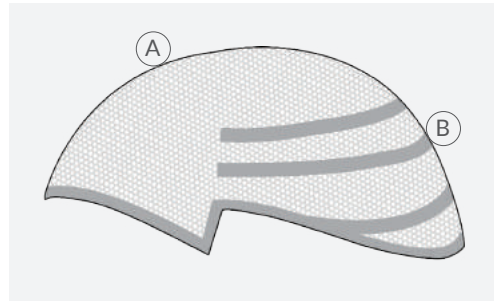
## COMFORTABLE & BREATHABLE

TONY IS ONE OF OUR MOST  
COMFORTABLE, BREATHABLE SYSTEMS.

TONY

## BREATHABLE

The low maintenance quality of this piece makes it one of our most popular. It is also extremely versatile and can be customized through wave, perm, or colored down.



## TONY

**Swiss Lace cap with Rootless Knots and PU Cutaway Lines**

- (A) **Swiss Lace**- Throughout the cap
- (B) **Polyurethane Cutaway Lines**- Throughout the back

- Extra light weight
- Full Swiss lace with rootless knots.
- 100% European Human Hair
- Hair Length 5" | 30mm wave or 28mm wave
- Available in size: 8"x 10"
- Comes in light & medium density



# JAKE

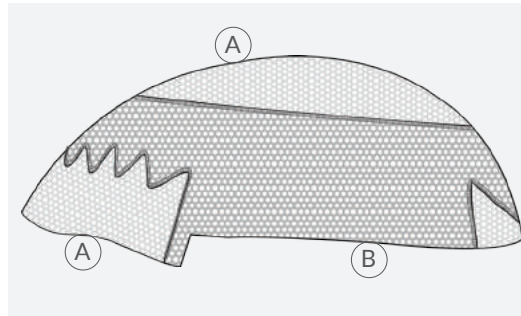
## DISCRETION ASSURED

JAKE IS AN EXCELLENT CHOICE FOR MEN WHO ARE LOOKING FOR A DISCRETE SYSTEM.



## DISCRETE

Jake is comprised of invisible knotting for an impeccable hairline. The lace offers maximum breathability while the double layer ensures the strength of the piece. The unit is one of our most comfortable and durable.



## JAKE

**Double Layer French Lace Cap with Single Layer at the front & crown**

- Ⓐ **Single Layer French Lace**- Located at the front and crown
- Ⓑ **Double Layer French Lace**- Throughout the cap

- Medium Density
- Single layer lace front and top
- 100% European Human Hair
- Hair Length 6"
- Available in size: 8"x 10"



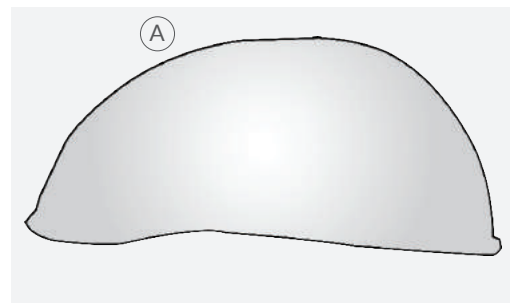
# POLO MODERNESENTIAL

POLO PROVIDES A MODERN LOOK WITH LOTS OF VOLUME.



## MODERN

Polo provides a modern look with lots of volume and medium density hair concentrated along the hairline with a 30mm wave. The hairline is refined yet sturdy, ideal for brushed back styles.

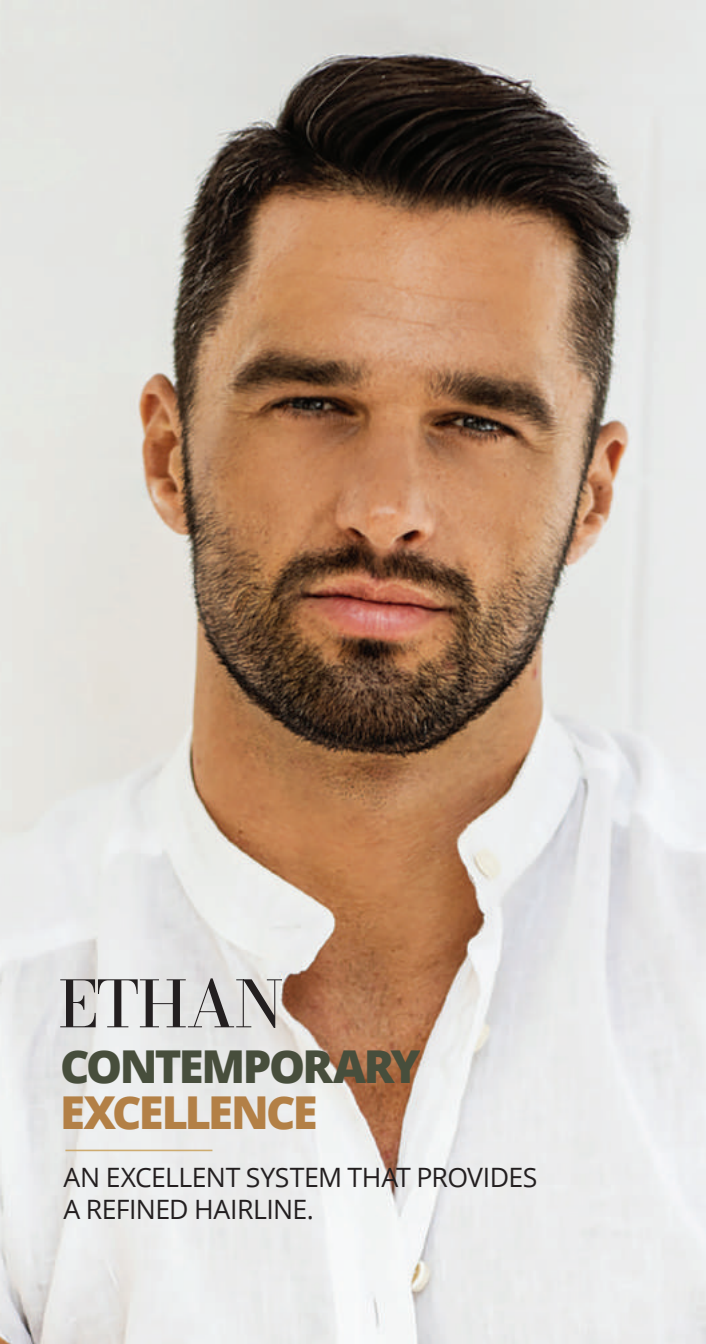


## POLO

Thin Skin Base with V-Loop Technology

- Ⓐ **Thin Skin**- Throughout the cap
- Medium Density
- Thin Skin V-Loop Cap
- 100% European Human Hair
- Hair Length 6" | Weight 2.3oz
- Available in size: 8"x 10





# ETHAN

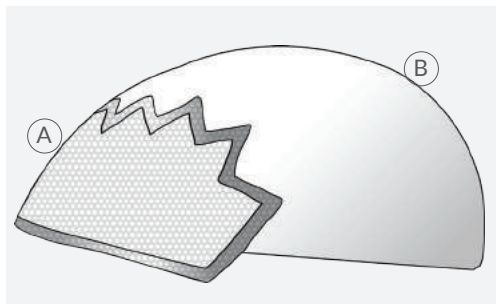
## CONTEMPORARY EXCELLENCE

AN EXCELLENT SYSTEM THAT PROVIDES A REFINED HAIRLINE.



## CONTEMPORARY

Ethan is another excellent system. It's similar to Polo in that it provides a refined hairline, but this unit allows for more scalp ventilation. The lace front is light and blendable while the skin perimeter adds the perfect amount of grip. This unit is excellent for contemporary pushed back hairstyles.



## ETHAN

Lace Front System with Skin in the Crown and Base

- (A) **Lace Front**- Located at the front edge of the cap
- (B) **Skin**- Throughout the crown, back & sides

- Light-Medium Density
- Skin with 1 1/2" lace front
- 100% European Human Hair
- Hair Length 6"
- Available in size: 8"x 10"



# MARK

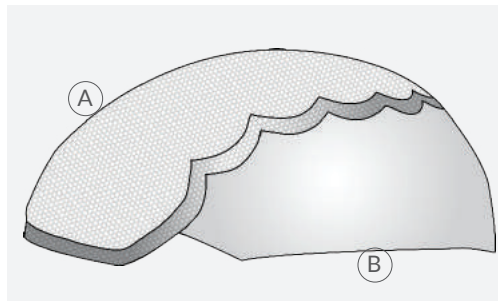
## WELLDEFINED

STURDY HAIR PIECE FOR MEN WITH A DEFINED LIFESTYLE.



## DEFINED

Mark is a sturdy hair piece. It's another great option for men with an active lifestyle. The hairline is well defined with a comfortable lace front and invisible bleached knots. The remaining cap incorporates a poly edge for extra fit protection.



## MARK

Lace Front and Crown System with Skin around the Base

- Ⓐ **Lace Front**- Located at the front edge and crown of the cap
- Ⓑ **Skin**- Throughout the back & sides

- Skin edge temple to back temple with lace front and top
- 100% European Human Hair
- Hair Length 5"
- Available in size: 8"x 10"



# LEO

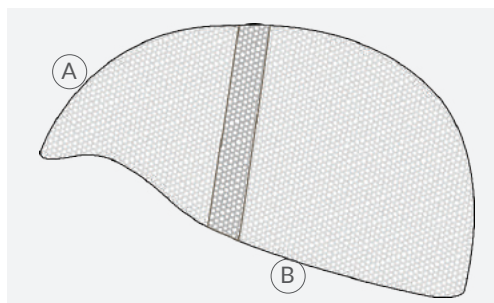
## CLEARCONFIDENCE

FOR MEN WHO LOVE BRUSHED BACK STYLES

LEO

## CONFIDENT

Our Leo is a confident piece. The structure of this system is a little more rigid, which makes it an excellent option for men love brushed back styles with lots of volume.



## LEO

Lace Front with Welded Fine Mono Base

- Ⓐ **Lace Front**- Located at the front edge of the cap
- Ⓑ **Welded Fine Mono**- Throughout the base of cap

- Light-Medium Density
- 100% European Human Hair
- Hair Length 6"
- Available in size: 8"x 10



# LOGAN

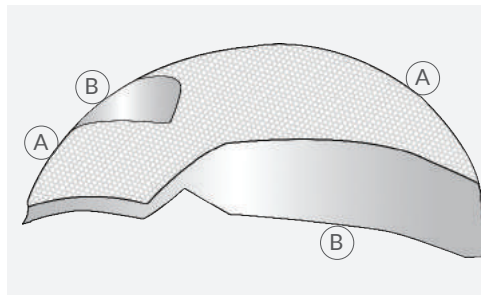
## LIGHTWEIGHT EDGE

A COMFORTABLE, LIGHTWEIGHT SYSTEM

LOGAN

## LIGHTWEIGHT

A comfortable, lightweight system would be our Logan. Similar to Viktor, Logan comes with a 1.5" poly edge around the temple & back. Perfect for active guys, this system grips securely with a poly edge. The lace front adds an incredibly realistic hairline.



## LOGAN

Lace Front and Crown with Polyurethane Tape Tab and Base

- (A) **Lace**- Located at the front edge of the cap and crown
- (B) **Polyurethane**- Throughout the base of cap and tape tab

- Medium Density
- Poly Edge Temple & with Lace Front and Top
- 100% European Human Hair
- Hair Length 6"
- Available in size: 8"x 10"



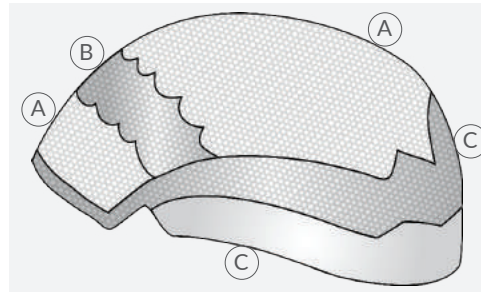
# RYAN DISTINCT VOLUME

LOW MAINTENANCE AND  
HIGH VOLUME



## VOLUME

Customers who have purchased our Ryan system love how low maintenance it is. The volume you get with this system is impressive. The look is easy going while being practical. Multiple styles can be worn.



### RYAN

**Welded Fine Mono Front and Crown with Polyurethane Base**

- (A) **Single Layer Welded Fine Mono-**  
Along front edge of the cap and crown
- (B) **Double Layer Welded Fine Mono-**  
Located behind lace front
- (C) **Polyurethane-** Throughout the sides and back

- Medium Density
- Poly edge temple to back temple with welded fine Mono front & top
- 100% European Human Hair
- Hair Length 6"
- Lifespan 6-7 months
- Available in size: 8"x 10"

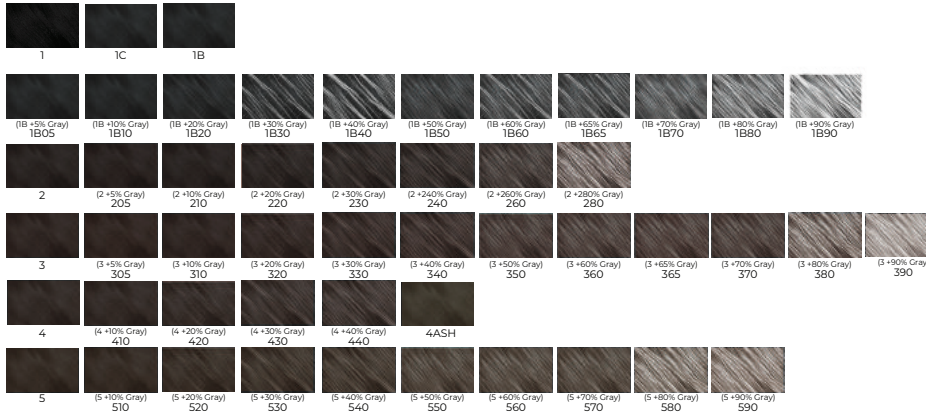
# COLORS



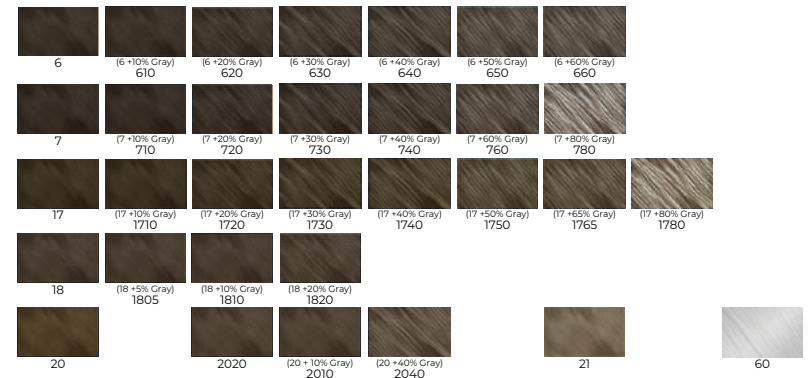
# MEN'S

# COLORCHART 2021-22

## BLACK & BROWN TONES



## LT. BROWN & BLONDE TONES



All of our systems with more than 30% gray contain 100% human hair. Systems with 5, 10, or 20% gray are made with synthetic gray. Color rings are available. Order one today!  
[services@houseofeuropeanhair.com](mailto:services@houseofeuropeanhair.com)

## PARTNERS

### DIGITAL MEDIA PARTNERSHIPS

HairArt / HEH Men's is proud of the industry pros and educators who train, show, and love our product lines. Tag or message us on social media and talk to us about special partnerships both on and off line.

**a. JOHN MOSLEY**  
@popular\_nobody

**b. S·R EDUCATION**  
@sallyrogerson &  
@sracademy\_official

**c. LISA WALKER**  
@lisalovesbalayage

**d. RON KING**  
@ronkingbeauty

**e. RYAN WEEDEN**  
@mastersofbalayage  
@ryan.weeden

**f. MIKE B.**  
styleseat.com/m/v/  
michaelbeasley





## IT'S ALL ABOUT THE HAIRLINE.

Inquire about our custom pieces or sign up here to carry our line of Men's hair systems.

**1.888.HAIRART (1.888.424.7278)**

***IN STOCK, SHIPPING  
SAME AND NEXT-DAY FROM CALIFORNIA***

Can't get service for client wigs and hair pieces? WE ARE ACCEPTING REPAIRS!

House of European Hair 400 W. 157th St. Gardena CA90248

service@houseofeuropeanhair.com

Sales: Nancy B. 310.817.6645 Johanna B. 310.928.7657



**@HouseOfEuropeanHair hehmens.com houseofeuropeanhair.com**