

## Belly pan 928 S4 repair manual

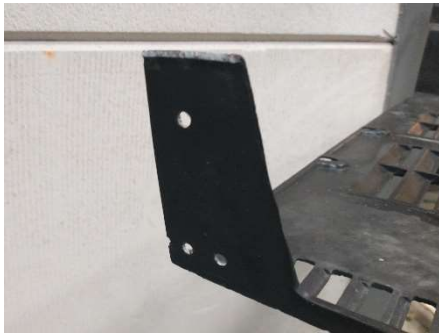


Necessary tools:

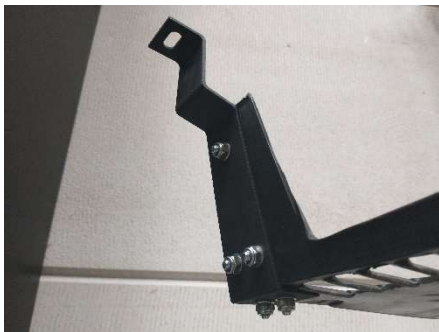
- Saw
- Min. 6.5mm – Max. 8mm drill bit + drill
- Hex key size 4
- Wrench size 10
- Marker



1. Remove the broken parts of the mounting



2. Mark the holes, and drill the holes



3. Make sure that the bolts stick outward, just like in the picture



4. Now you can mount the repaired belly pan back in its original position.