

B/RB TRI-Y Header Install Instructions

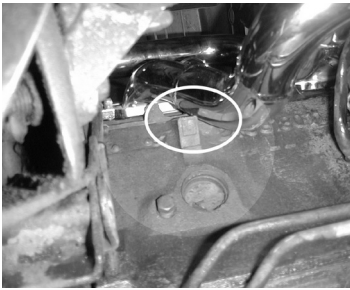
Thank you for your purchase! These instructions are for installation with the engine already in place. Headers can also be installed as an assembly with the engine. Due to tight clearances, the leveling process is critical to the success of your project (see engine mount kit instructions).

RIGHT HAND (PASSENGER SIDE), INSTALLED FROM THE TOP:

Remove spark plugs. It may be necessary to raise right hand side of the engine 1/4 - 1/2 inch. Torque hardware per gasket instructions.

LEFT HAND (DRIVER'S SIDE), INSTALLED FROM THE BOTTOM:

Remove starter and bottom starter stud from the tranny case, remove steering column and #5 and #7 spark plugs. Engine will need to be raised or rocked on the left hand side for clearance between the head and steering gear. Torque hardware per gasket instructions.



NOTE: It is possible on some engines an extra boss on the driver's side (see photo on left) may interfere with the front intermediate pipe. Please check this before final assembly. Some minor grinding of this boss may be necessary to insure a good header to gasket seal. The boss is supposed to touch the header, but not interfere with the final sealing of the header to the head. Test fit without gaskets as they are fragile and one time use.

NOTE: Standard starter measurement from the transmission surface to the end cap is 8 1/2 inches. A few after-market or "hi-performance" starters are longer than this and may touch the header. In this case, you will need to switch to a starter that is within the standard range.

'67-72 A-Body Owners: Sloppy tolerances in the manufacturing of A-body k-members of this era may affect engine position in some cases. Shimming may be required.

'78-79 Magnum and Cordoba with column shift: The lower shift linkage in these cars may interfere with the header. TTI's offset shaft can solve this problem.

IMPORTANT NOTE REGARDING CERAMIC COATING: If your headers are ceramic coated, please note breaking in of the engine/camshaft while using ceramic coated headers will damage the coating and void the warranty.

If you have any further installation questions, please call or text us at 951.440.8340. E-mail tech is also available at info@engine-swaps.com.

Schumacher Creative Services

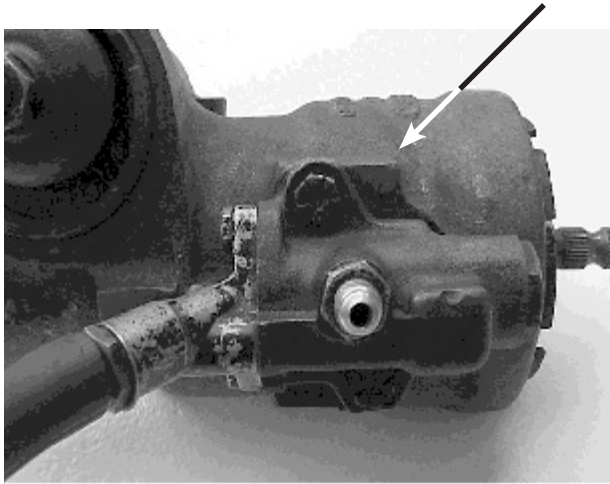
41715 Elm St. Suite 301
Murrieta, Ca 92562

engine-swaps.com [ig:@schumacher_creative_services](https://www.instagram.com/schumacher_creative_services) [fb.com/engineswaps](https://www.facebook.com/engineswaps)

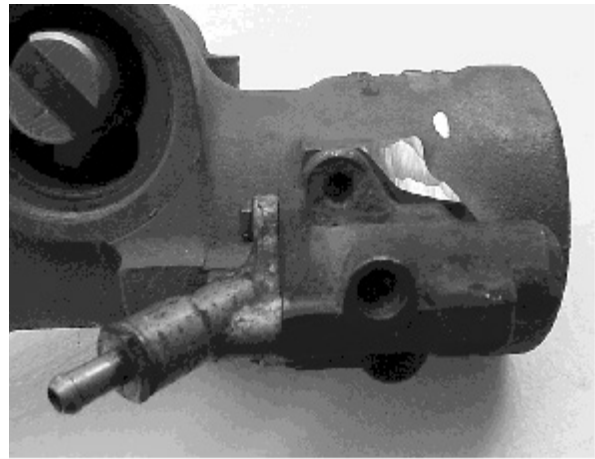
440 A-BODY INSTALLATION

Some power steering gears have a corner next to the pressure hose (see arrow) that needs to be ground down for clearance when installing headers in a 440 A-Body.

Before grinding



After grinding



The photo below shows the correct clearance with the header installed.

