

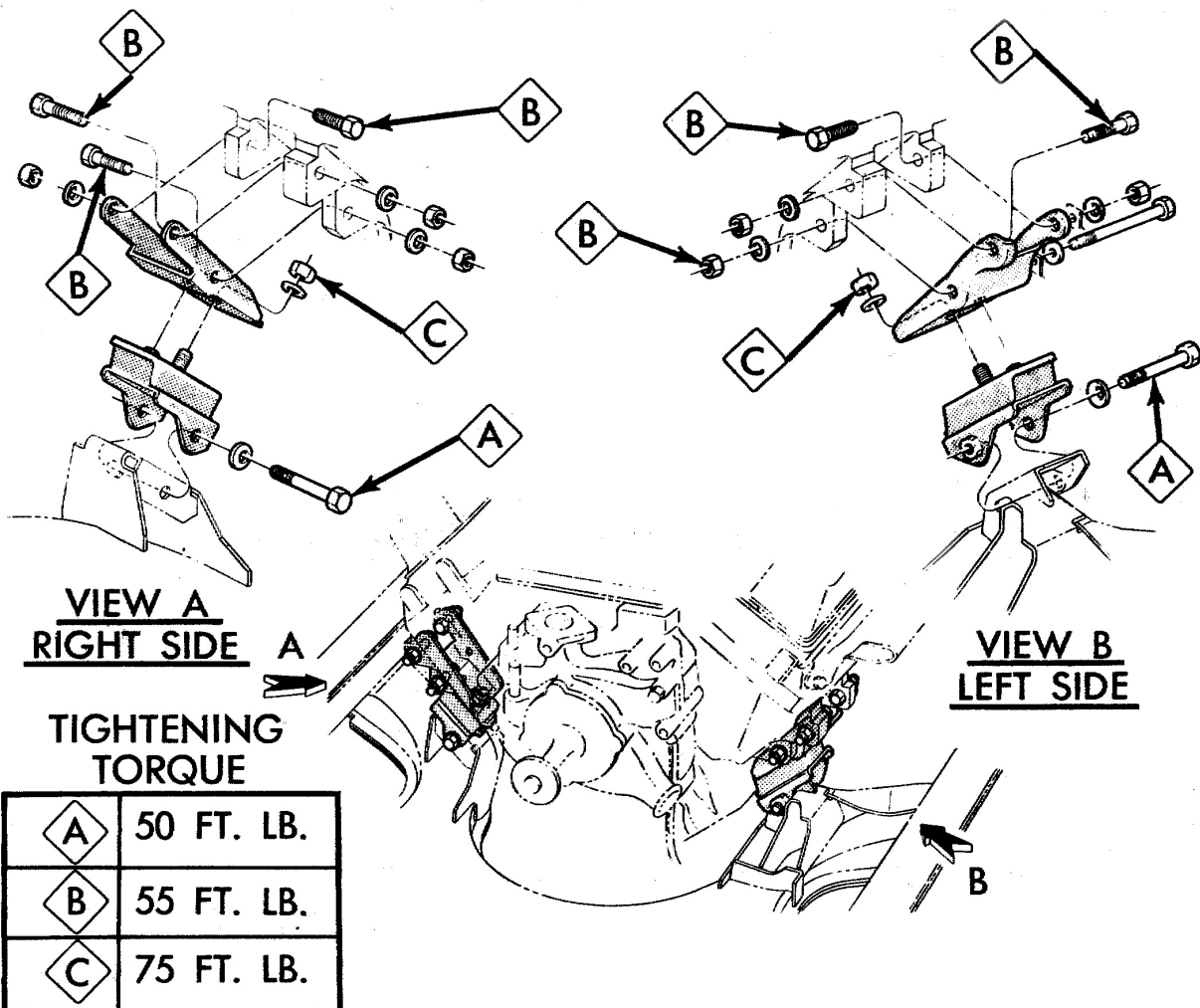
# INSTRUCTIONS

## '66-72 B, 70-74 E, 66-73 C B/RB Engine Mount kit

Thank you for your purchase! To aid in the success of your project, we strongly recommend purchasing a Factory Service Manual for your vehicle.

**Note:** Your brackets should be marked with an "L" sticker for the left side bracket (Driver Side). If not, the left side bracket is the one with the tube welded into it.

**Adjustability:** All Chrysler motor mount bosses have 1/2" holes and 7/16" fasteners. In addition the K-member holes are oversized to aid in adjustability. By installing the motor mount assembly finger-tight (bracket to engine and rubber isolator to K-member) a hoist can then be used to shift the engine in place for optimal clearance and position. You will notice approximately 1/4" of movement. The transmission mount should also be loose to aid in adjustability. Once desired engine placement is obtained, torque all fasteners to factory specs.



# Tech Tips

Since these mounts are essentially direct factory replacement style brackets, the best tech tip we can give is to purchase a Factory Service Manual for your vehicle.

- Your swap will be greatly simplified by using as many production parts as possible. For example; Big-Block B-Body exhaust manifolds into a B-Body, etc.
- Small Block and Big Block B/C/E Body utilize the same K-member for Big and Small Block applications. The only change required is to swap from Small Block to Big Block engine mounting brackets. Rubber isolators remain the same.
- Slant 6 K-members **WILL** require a change to a V8 K-member.
- Small Block and Big Block radiator inlet/outlet configuration is different. Make sure your radiator is properly configured for your engine.
- The oil pan must be a low profile, center sump - standard on most passenger cars.
- These brackets were designed using original Chrysler rubber isolators. We supply the best rubber isolators we can possibly find. However, through the years we have noticed small design changes to the isolators that change the way they fit our brackets. It may be required for you to make small modifications to the brackets to allow the isolator to fit as best as possible.

By installing this kit you assume all risks and liability. Schumacher Creative Services Inc. is not liable for any damages, injury, or death caused by installing this product.

For tech support please call or text 951-440-8340 or e-mail [info@engine-swaps.com](mailto:info@engine-swaps.com)

*Schumacher Creative Services Inc.*

41715 Elm St. Suite 301 Murrieta, Ca 92562

[info@engine-swaps.com](mailto:info@engine-swaps.com) 951-440-8340

[facebook.com/engine-swaps](https://facebook.com/engine-swaps) ig: [schumacher\\_creative\\_services](https://www.instagram.com/schumacher_creative_services) [engine-swaps.com](http://engine-swaps.com)