

# Left Hand Conversion Bracket

## 67-69 A-Body original B/RB

## 65 C-Body original B/RB

This bracket is designed to replace the factory original big block bracket for blocks that do not have the correct bosses.

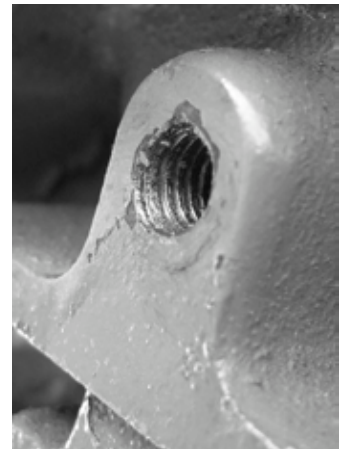
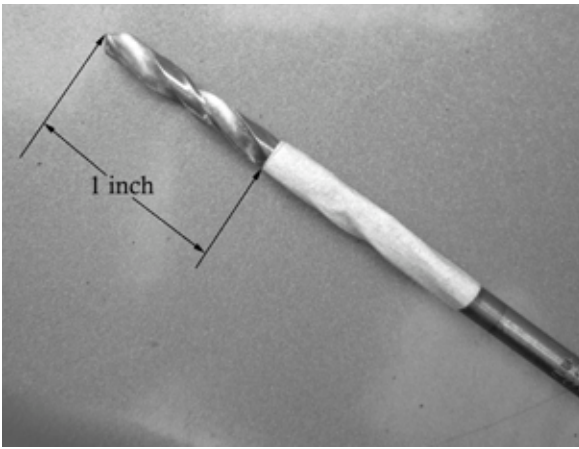


Install bracket as shown.



Line up bottom of the bracket to the bottom edge of oil pump.  
(see scribe)

With a felt tip marker, or equivalent, trace or scribe a line around the inside of the bracket holes.



You will need to drill and tap two 1" deep holes for the bracket.

For the average street car use tap size 3/8" x 16 (course) with a drill size of 5/16".

For more performance oriented vehicles use tap size 7/16" x 14 (course) with a drill size of "U" or 25/64".

Drill a pilot hole in the center of your scribed mark. I use a piece of tape to mark the depth. (1")

