

# INSTRUCTIONS

## '67-72 A-Body Slant 6 to Small Block Conversion

**Thank you for your purchase! We strongly suggest purchasing a factory service manual for the correct year and model of the vehicle you're working on. This will be an invaluable tool for the success of your project.**

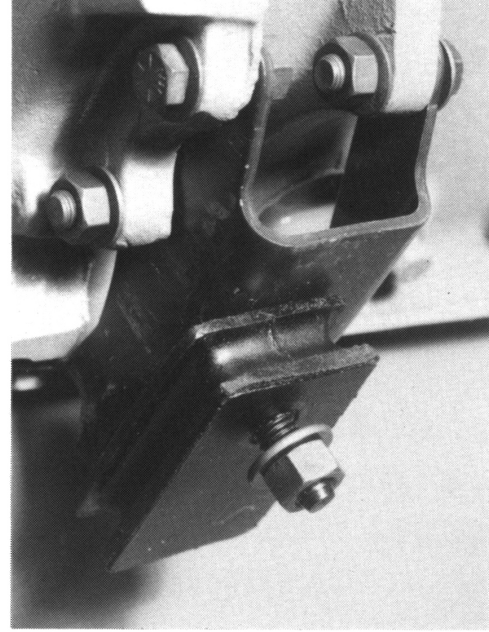
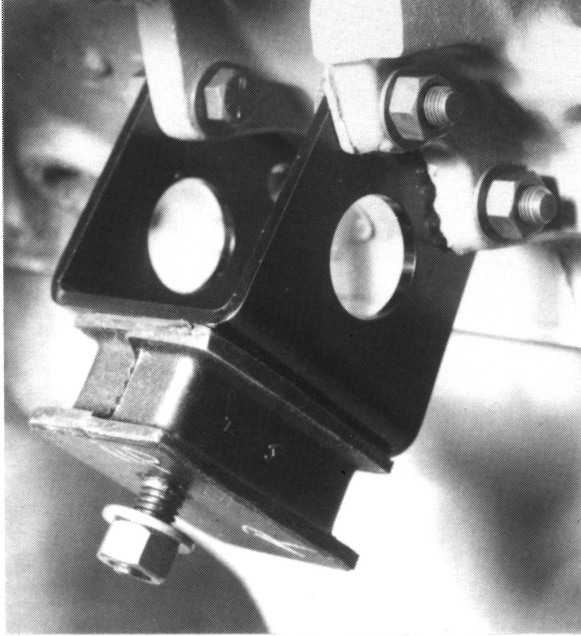
**Note:** Your brackets and rubber isolators should be marked with an "L" sticker for the left side. If not, the bracket with 1-3/8" access hole, and thicker of the two mounts, is the right (passenger) side.

**Bracket Installation:** Install rubber isolators to metal brackets using supplied hardware. Torque isolator to bracket per service manual. Install bracket and rubber isolator assembly to engine as shown. Tighten fasteners finger tight only to allow for greater adjustability. You will torque all fasteners after proper adjustment has been achieved.

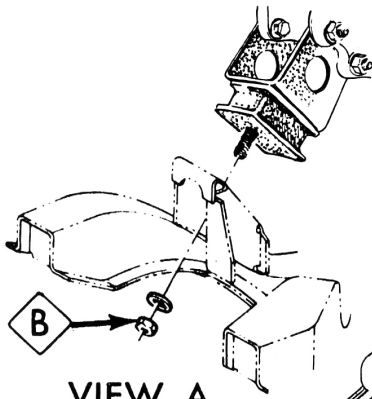
**Engine Installation:** Lower engine and install as outlined in the factory service manual.

**Engine Leveling/Adjusting:** Make sure the vehicle is on level ground prior to leveling the engine. A 4 foot bubble level can be used across the valve covers to check for proper level. All Chrysler motor mounts have 1/2 inch holes and 7/16 fasteners for mounting to the engine lugs. Most K-member mounting holes are oversized as well. This is to allow for engine adjustability and poor factory manufacturing tolerances. By installing the engine brackets finger tight a hoist or floor jack can be used to shift the engine into its proper location. The transmission mount and crossmember should also be installed loosely to aid in adjustability. Once desired engine level is achieved, tighten all hardware to specified torque in your Factory Service Manual.

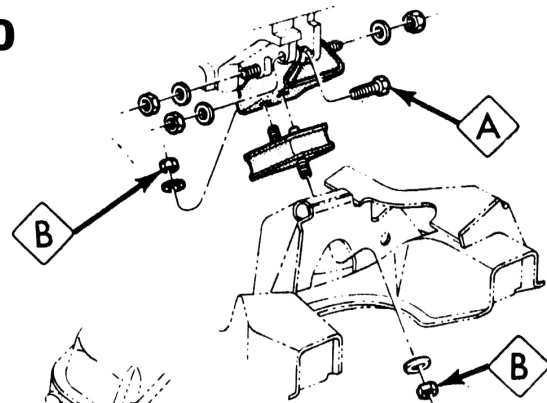
**Final Notes:** Every effort has been made to insure correct engine placement. Due to sloppy tolerances from the factory when building K-members (no two are exactly the same), there may be an instance where achieving proper fit requires more than bolting on the brackets, holes in the brackets or K-members may need to be enlarged for proper fit. If you need further technical assistance, please call or text 951-440-8340. E-mail tech support is also available at [info@engine-swaps.com](mailto:info@engine-swaps.com).



**340/360**



**VIEW A  
RIGHT SIDE**



**VIEW B  
LEFT SIDE**

**TIGHTENING  
TORQUE**

<b>A</b>	<b>55 FT. LB.</b>
<b>B</b>	<b>75 FT. LB.</b>



**273/318**

*Schumacher Creative Services inc.*

41715 Elm St. Suite 301  
Murrieta, Ca 92562

ig: schumacher\_creative\_services fb.com/engine-swaps.com info@engine-swaps.com