

What To Wear Under There? SUPPORTABLES®

STEP INTO SPRING FASHION 2024

ISSUE 57

*Peach
Fuzz ...*

*Pantone
Color of
the Year
2024*



Prom

Wedding

*Spring
Break*

The warmer weather may still be a few months away, but we are already thinking about Spring. We are anticipating the fashion trends that will be popping up around us for our 2024 wardrobe.

Braza is introducing two new bras, **Cleavage Booster 101** and **Super Bra**. They are uniquely different from anything on the market and may be just what you are looking for, for anxiety-free dressing.

Since we are sure there will be some deep-plunge and strapless fashions around the corner, we recommend **MagiCups Galore** and **Deep Plunge**. You will be stunning!

And spring break? It's almost here! Take along the **Smart Tape Compact** and some nipple covers, for fashion modesty, of course! Enjoy your stylish adventures.

Your friends at Supportables...





Davina & Micky

Notes from the Editor

PANTONE COLOR OF THE YEAR—PEACH FUZZ



The runway featured the latest spring fashion trends, including the spotlight on the predicted **color of the year 2024: Peach Fuzz**. Talented fashion designers revealed their creations, incorporating this enchanting shade into their collections.



Jill Sanders—runway featured a soft shiny peach jumpsuit paired with sleek black mid-calf boots.



Caroline Herrera revealed a polka dot dress in a peach background.



Victoria Beckham showed a floor-length paneled peach satin dress with a small center bow, paired with nude platform pumps.

Airy styles including ruffles and flowy silhouettes are set to make a comeback this year. **Stella McCartney's** take on the trend and comes in the form of tiered fills and a sweeping, floor length style.



EDITOR'S SPOTLIGHT

SUPER BRA
For Freedom of Movement.
For Freedom of Fashion.®

NEW!



The first adhesive bra that comes with a clear strap, (when needed). Use for all deep-plunge and strapless fashions.

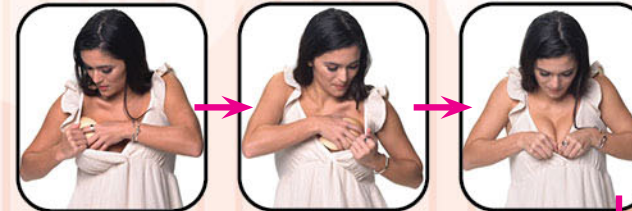
EDITOR'S PICK

NEW!

CLEAVAGE BOOSTER 101
Killer Cleavage!

Slips under your regular bra to create killer cleavage.

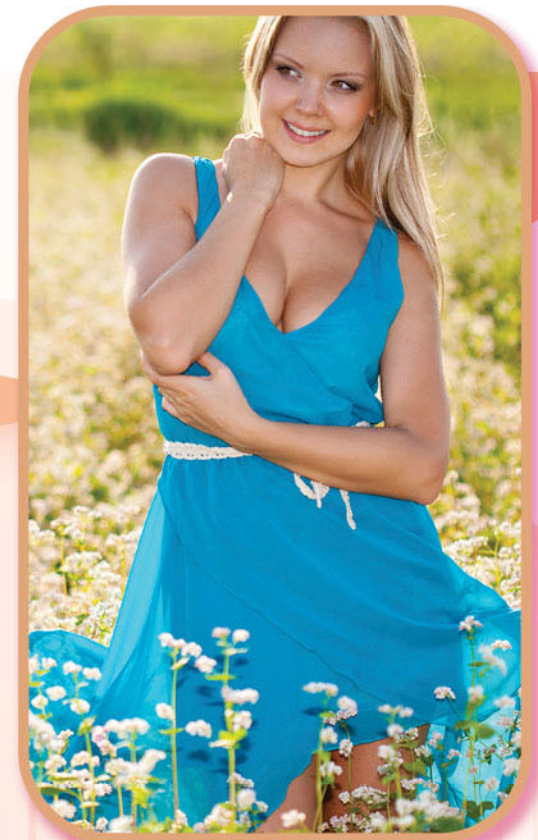
See illustrations below.



Insert pads under bra and connect ...



add bronzer for additional cleavage.



Create a killer cleavage!

Clothing Shields
Protectores De Prendas

SUPPORTABLES®



OS
OM
OL



Permanent – sew-in.
Temporary – double-sided tapes (included).

Permanente – puedes coserlos.
Temporal – usa los adhesivos de doble lado (incluidos).



For ladies and gentleman.



Black, Beige, White

NEW!

CLOTHING SHIELDS®
Keeps you and your clothing dry.

We've added a new version of our *Clothing Shields*. Available in 3 colors and 3 sizes to meet all your clients needs.

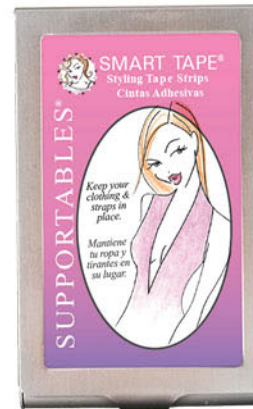
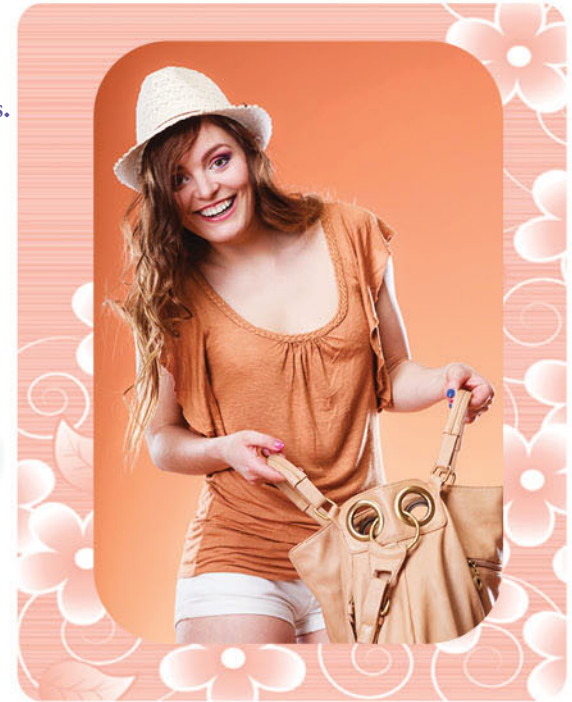
Sew in or attach temporarily with double-sided tapes (included).



CLICK HERE

PETAL TOPS®
Disposable nipple covers.

Reach for disposable *Petal Tops!* Our tried and true nipple covers designed to eliminate show-through and chafing (during exercise).



Reusable case with a mirror.
Repurpose for credit and business cards.

SMART TAPE® COMPACT
Double-Sided Clear Tape Strips

CLICK HERE

Eliminate a fashion "Oops" with *Smart Tape*. Fits inside any purse. We've designed this "must-have" item in precut double-sided adhesive strips to quickly handle fashion emergencies.

Fashion fixes
with smart tape
when on-the-go!



Keep the gaps between
buttons closed.



Keep off-the-shoulder
tops in place.



Keep suspender straps
on your shoulders.



DEEP PLUNGE BRA
Wear it all!

SUPPORTABLES®
¿Qué debes usar debajo?
What to wear, under there?

Deep Plunge Bra

SIZE / TALLA / TAILLE:
■ A ■ B
■ C ■ D ■ DD

Reusable!

A strapless, backless, deep-plunge, adhesive bra that provides great support and shaping.
Sin tirantes, con espalda descubierta y un escote profundo, un brasier con adhesivo que proporciona un gran soporte y moldea tu figura.



Go all out with our **Deep Plunge Bra**. It's one of our most popular backless, strapless adhesive bras, designed with an innovative "U-shape"... to be worn underneath you know what!



**NO ADHESIVE!
SILICONE TOPS**

[CLICK HERE](#)

No Adhesives reusable silicone nipple covers are activated (become sticky) with body heat and will comfortably stay put all day. We've designed these essentials with paper thin edges to prevent show-through.



Reuse over 100 times!



THE ULTIMATE BODY TAPE
Adhesive body tape

[CLICK HERE](#)



What to wear underneath a deep-plunge prom gown?

The Ultimate Body Tape, of course! We've created the ultimate breast and body tape that stretches for comfy, reliable, all day support. Simply apply this skin-friendly tape to support and conceal *the girls* in all your strapless and deep-plunge fashion!



Skin prep included for ease of removal.



NEW!

MAGICUPS® GALORE
Shape - Support - Enhance

MagiCup Galore — a backless, strapless adhesive bra, designed with a front clasp and seamless edge to instantly create shape and cleavage.



Reusable 50 times or more!



On The Runway

At the New York Bridal Fashion Week, Ukrainian designer *Eva Lendel* unveiled her opulent collection of wedding ball gowns, adorned with intricate royal embroidery, sequins, and sparkling beads, capturing the hearts of everyone in the audience as the models strutted down the runway.



CLEAR REVEAL®
Transparent Support

For:

- deep-plunge
- backless
- sideless fashions



CLICK HERE

It's clear, comfortable and reusable! Can be used 20 times or more. Includes double-sided tapes to keep clothing in place.



ADHESIVE BRA®
The original stick-on-bra!

The first backless, strapless, stick-on-bra that really works! Effective support without the use of a conventional bra.

A must-have for every bride-to-be!



CLICK HERE

Introduced in 1985 and still going strong.

- can be custom cut
- wear with almost any neckline
- wear with a sexy backless dress without a conventional bra showing



SPRING TREND

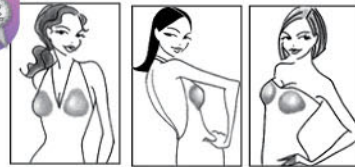
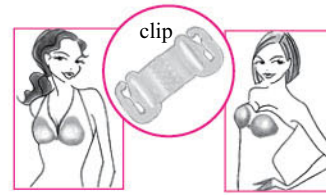
SPICE UP COCTAIL HOUR THIS SPRING

Consider the timeless black cocktail dress. On the runway, *Yves Saint Laurent* recently featured black draped jersey maxi dresses with deep-plunge and halter neck styles. Enhance this look with the *Reveal II Cleavage Galore*.

When faced with a fashion emergency, our *Double-sided Tapes* (not shown) and *Pierced Earring Helpers* are perfect for quick fixes.



Oops! Lost a safety back to the fish hook earring?
Pierced Earring Helper to the rescue!



without clip

REVEAL® II CLEAVAGE GALORE
...backless & strapless - adds enhancement & cleavage

Can be used 5 different ways – with and without clip.

Reusable!



PIERCED EARRING HELPERS

All the essentials needed for pierced earrings.



[CLICK HERE](#)

TED'S TRAVELS

Ted, back again in Uganda, distributing mosquito nets and medicine donated by Brazabra Corp. Also, sponsoring several vulnerable underprivileged children and adults with schooling. An education is key to a productive and happy life in Uganda. Volunteers, (doctors, nurses, students and retired folk) come to Uganda from around the world and spend up to three months in outreach programs treating and testing vulnerable people (for malaria, HIV, covid). As a volunteer, it is an experience of a lifetime working with people who are so appreciative and know you have put your life on hold, to come from far away to help them.



School sponsored, children and adults.

Brazabra Corp.
8 Run Way
Lee, MA 01238, USA

413-243-4690
800-251-3031



DAVINA'S FASHION NOTES

What to wear, under there ...

Prom



Sherrie Hill revealed a stunning red satin prom dress with a plunging neckline that really stole the show.

Clear Reveal and *The Ultimate Body Tape* are perfect for backless, strapless or deep-plunge support.

psst ... Red is the top color choice for prom dresses this season!

Bride-to-Be



Nadia Manjarrez a wedding fashion designer from Mexico, presents her exquisite drop waist silhouette complemented by a striking white bustier paired with a skirt.

A fantastic addition to enhance cleavage, support and shape is *Cleavage Booster 101*, wear underneath a bustier, corset or bra.

Spring Break



Classic floral print dresses took center stage on the runways of iconic fashion houses such as *Chanel*, *Balenciaga*, and *Carolina Herrera*. These renowned designers showcased their collections featuring all-over pink and purple floral prints.