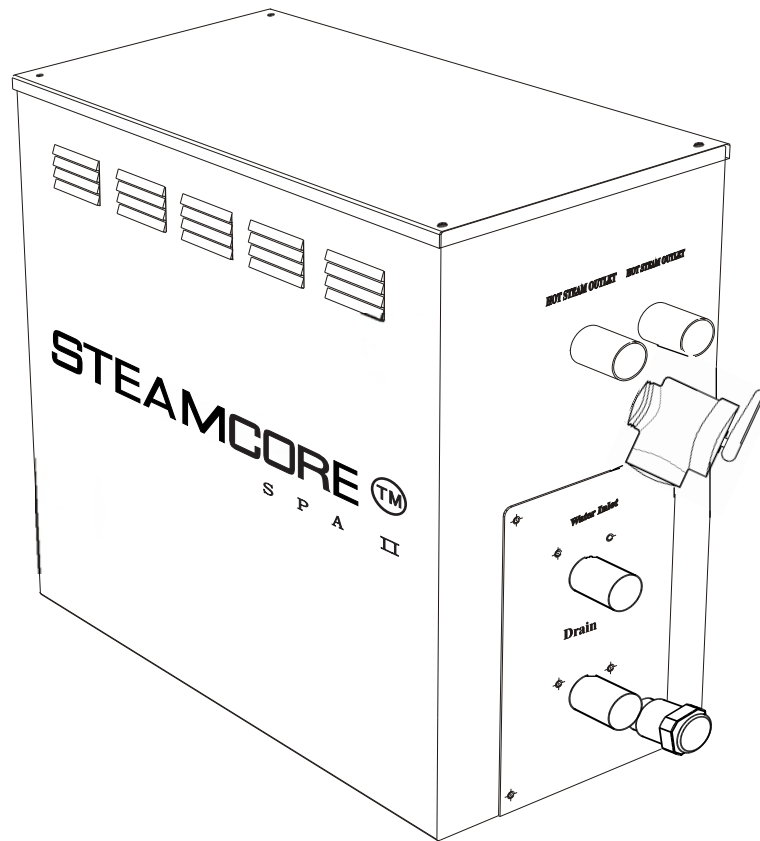


STEAMCORETM

S P A II

STEAM GENERATOR



obsessed with quality...
quality of lifeTM

Users instruction-----	1
The steam equipment installation location-----	1
The typical illustration of the steam equipment installation-----	2
Installation of the steam line -----	3
Drawing of the steam generator-----	5
Electrical requirements-----	6
Power line assembly illustration-----	7
Generators internal electrical wiring-----	8
Installation of the mood light-----	11
Choosing your models-----	12
Steam generator structural drawing-----	13
Safety precautions of the controller-----	14
The safety and operating instruction of the controller-----	14
Control panel (both SSI and SSII) dimensions-----	15
Controller installation instructions -----	16
Temperature sensor installation (only for SS I Control Panel) -----	17
Illustration for the controller panel (SS I Control Panel)-----	18
Operation instruction (SS I Control Panel)-----	18
Illustration on the controller panel (SS II Control Panel)-----	20
Operation instructions (SS II Control Panel) -----	20
Maintenance of the steam generator -----	22
Trouble shooting -----	23
Specifications -----	24

User Manual

Certified to CAN/CSA Std. No. 88
Conforms to UL Std. 499

Technical Hotline 905-951-6662

Users instruction



Caution:

We are not responsible for the malfunction and damage from installation that does not comply to the user manual.

1. Make sure the model and the accessories are correct, including the voltage input.
2. Make sure the steam power are matched with the steam room dimension. Pay much attention to the steam room's cubage and construction. If you have any problem, please refer to the Page 11 about the dimension selection.
3. Make sure to read this in manual detail.
4. We shall not be responsible for the product damage or malfunction caused by self-installation.
5. Steamcore Spa II series are packaged in a box, please check the goods when it arrives to assure it is in good condition, if you find any damage in the package, please contact the transportation company to file a claim for compensation.
6. This product must be used indoors.

THIS UNIT MUST BE COMPLETELY INSTALLED WITH UNIONS TO ALLOW EASY REMOVAL IF FUTURE SERVICE IS NEEDED.

It is strongly recommended that the water intake solenoid be connected to a water supply using a braided hose line. Teflon tape is required to make a liquid tight seal between the threads and a rubber gasket (washer) is used to seal between the solenoid and the braided hose attachment. Incorporate thread sealant (teflon tape) on both the water intake and drain solenoid for a tight seal to avoid leaks.

Choosing a right location



Important:

Install an exhaust fan outside of the steam room so it can expel the excessive steam from the shower room.

Some locations recommended for installation.

1. The distance to the steam room less than 20ft, the standard cable which link the controller and the steam generator 22ft.
2. The steam generator should not be installed in the steamroom
3. Do not install outdoors or in any places that will influence the security of the machine by the environment.
4. Do not install a frigid loft or any place water will freeze.
5. Do not install it near burnable and combustible objects or chemicals
6. Install in a dry place and make adequate ventilation.

NOTE: Use teflon tape on the water intake solenoid and the drain solenoid to create a tight seal between the threads. Absolutely do NOT apply heat to the plastic solenoids (water intake & drain) during installation.

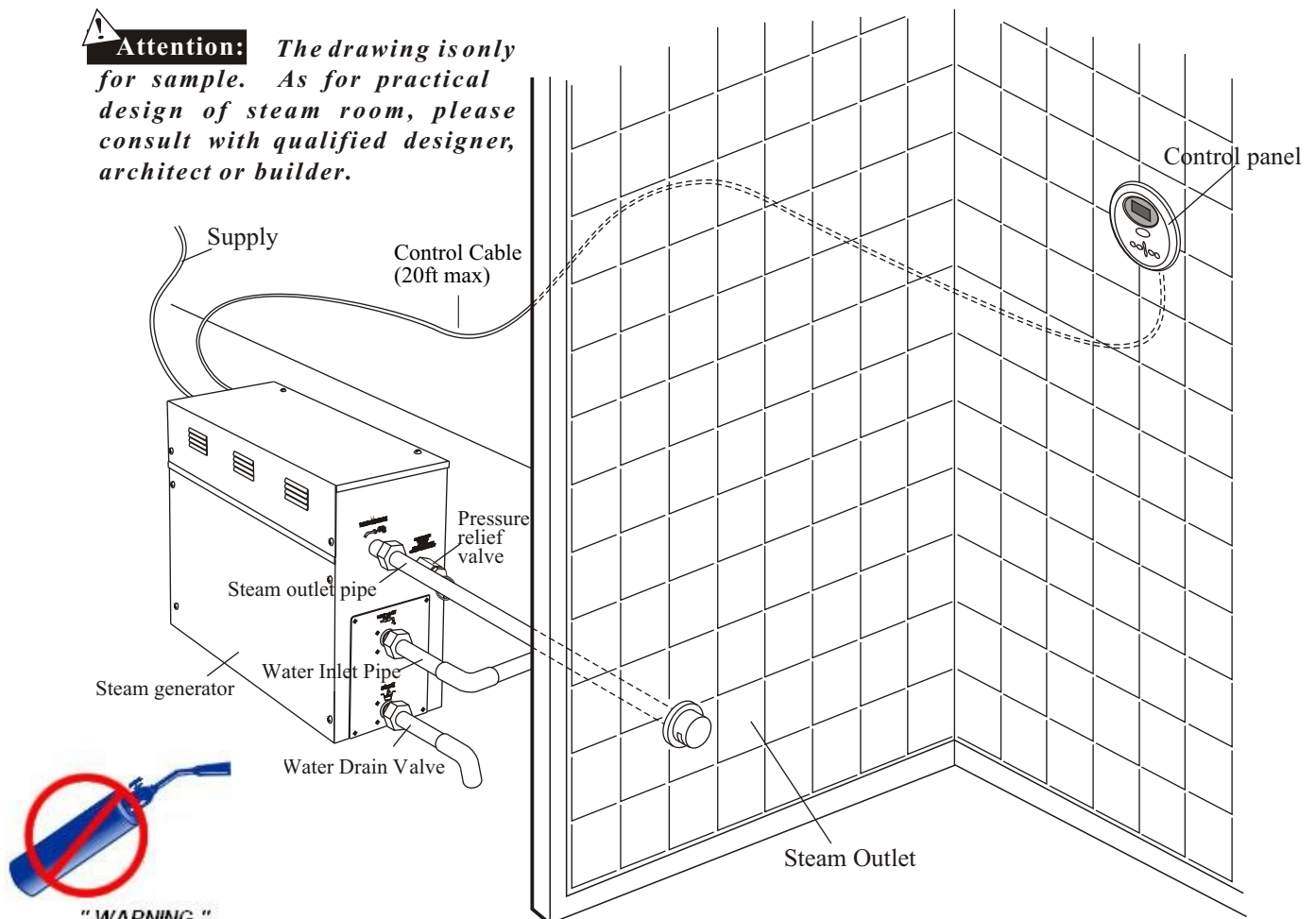
User Manual

7. Stable and horizontal. The steam generator has a hanging groove for mounting on the wall. Make sure the machine is steady and horizontally installed.
8. On both sides and the top of the steam generator needs at least 12 inches of clearance space.
9. The place where the machine is installed must be easily accessible and convenient for the disassembly of the machine.
10. The installation place must be convenient for the drain of water.
11. The steam pipe, safety valve, drain valve, water tube, steam outlet are still very hot after the steam generator has stopped working for some time. Keep the steam outlet away from the people. Bodily injury or burn may occur, provide appropriate protection.
12. The controller must be installed in the steam room, please refer to the instruction of the controller's installation and operation of the manual.

Attention: *The steam generator (including the controller) comply with CE, CSA and UL certification standards.*

Installation drawing of the steam generator

Attention: *The drawing is only for sample. As for practical design of steam room, please consult with qualified designer, architect or builder.*



"WARNING"
Heating with torch will
cause DAMAGE.

User Manual

Installation of pipeline



Warning:

The installation of all the pipes should be done by a qualified licensed plumber.

1. Use threaded unions when connecting pipes to fill/drain valves and steam line(s).
2. Use brass or copper only.
3. Do not use ABS, galvanized or PVC pipes.

DO NOT HEAT AUTO FILL / DRAIN VALVES WITH TORCH DURING INSTALLATION.
This will cause damage to the plastic solenoid valve which will cause malfunction or leakage.



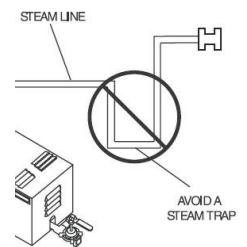
"WARNING"
Heating with torch will
cause DAMAGE.

Water supply pipe (1/2")

1. Connect hot water or cold water. Hot water with a temperature of not more than 160 °F.
2. Install shutoff valve in the water supply pipe. The shut off valve should be installed in a place where it is easily operated in emergency.
3. Clean the water supply pipe completely before connecting the water pipe to the steam generator.
4. It is suggested that a filter and anti-furring equipment be used in the water supply pipe.
5. The water pressure should be between 15 and 20 psi. If necessary, decrease the pressure accordingly. Excess pressure may cause leakage. The water flow rate should be approx 8 gpm.
6. If necessary, install equipment to prevent the water hammering sound, also install an approved backflow preventer as required by local codes. It is suggested that a thread on braided hose with a rubber washer be used for the water supply line in order to attach the shutoff valve to the water intake solenoid. Also use adequate teflon tape around the thread of the solenoids for a tight seal between the two fittings.

Steam Pipe (Pipe Diameter: 3kW/4.5kW pipe size: 1/2" 6kW & above: 3/4")

1. Do not install any valves in the steam pipes. The steam can never be obstructed.
2. Install one or more steam lines equal to your steam generator steam outlet(s) and with the same same diameter size copper steam pipe between the steam outlet and the steam nozzle.
3. The heat insulation material used to insulate the steam pipe should be resistant to temperature as high as 250 °F or higher.
4. The horizontal part of the steam pipe should be installed inclining to the steam outlet or in the direction of steam generator. Do not bend it in a shape to make the cooled water stay in the curved pipe of the steam line.
5. The shorter the steam pipe, the better. Try to decrease the number of elbows and avoid abrupt turns. Do Not combine steam lines if generator has more than one steam outlet.



Steam nozzle (3kW/4.5kW pipe size: 1/2" 6kW & above: 3/4")



Attention:

Do not install the steam pipe in an upper or lower direction repeatedly, this will affect the output of steam.

Make sure for each steam outlet on the generator there is an individual steam pipe to the steam room with the same diameter size as the outlet.



Attention:

Since the steam nozzle and steam outlet are very hot, try to avoid installing the steam nozzle in the position which will easily come into contact with a person

Install steam heads away from bathers path or from any direct contact. Add appropriate protection to avoid bodily harm or burns.

1. Install the steam nozzle in the position 12 inches above the ground. If the steam bath is in the bathtub, install the steam nozzle 6 inches above the bathtub. If the steam room materials like acrylic or non-heat-resistant sheet, install additional heat insulators.

2. The steam outlet should be installed face down. Install the steam nozzle and tighten with hands (use silicone).



Attention:

In order to protect the steam nozzle, do not use wrench or other tools to tighten, use a little soap water and soft sponge to wipe, and do not use corrosive chemical solutions or harsh cleaning tools.

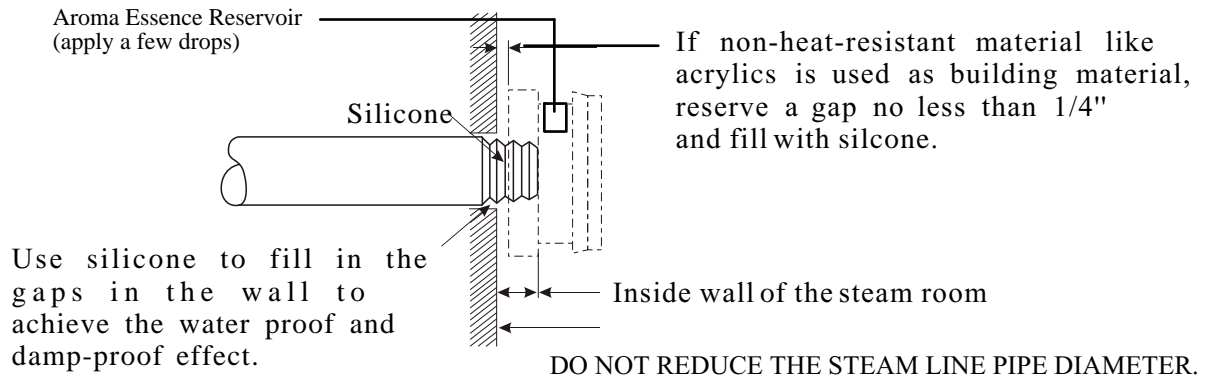
User Manual



Important:

1. Please consult your distributors of building materials like acrylic, fiber glass or other anti-heat sheet about the installation position of steam nozzle. It is suggested that MS-103412 anti-heat material can be used.

2. In the entire steam room, it is required that steam must not leak out. The pipes, its accessories and the holes in the wall should be airproof by applying silicone so that no steam will enter the holes in the wall.



Drainpipe (1/2")

According to national or local codes, the steam generator drainage valve should be equipped with a drain pipe. The steam generator drains the water by using gravity.



Attention: The drain pipe should not incline upwards so as to prevent the drainage of water.

Steam generators 10.5 kw and up have an additional manual drain port right next to the auto drain port. This is only used for manual draining and should remain closed at all times.

DO NOT HEAT AUTO FILL / DRAIN VALVES WITH TORCH DURING INSTALLATION. This will cause damage to the plastic solenoid valve which will cause malfunction or leakage.



"WARNING"
Heating with torch will
cause DAMAGE.

Safety Pressure valve(s) (Supplied only - must be installed on-site by plumber)

1. Pressure valve is a safety equipment in order to prevent too much steam pressure in the steam generator due to various reasons; such as, steam line blockage, undersized steam lines, steam line traps, vandalism, etc.



2. The Steam Safety Pressure Valve & Switch Application is Mandatory.

A Pressure Safety Valve (Steam Pressure Valve) has been supplied with this steam generator unit.

The steam generator has removable sealed plugs in place of the pressure valve mounting location (labelled).

A qualified licensed plumber must install the supplied pressure valve during installation of the steam generator.

Unscrew the plugs, and screw on the pressure relief safety valve supplied. Make sure hi-heat silicone is used to seal the safety valves to the boiler tank when attaching, allow silicone to cure 24 hours.

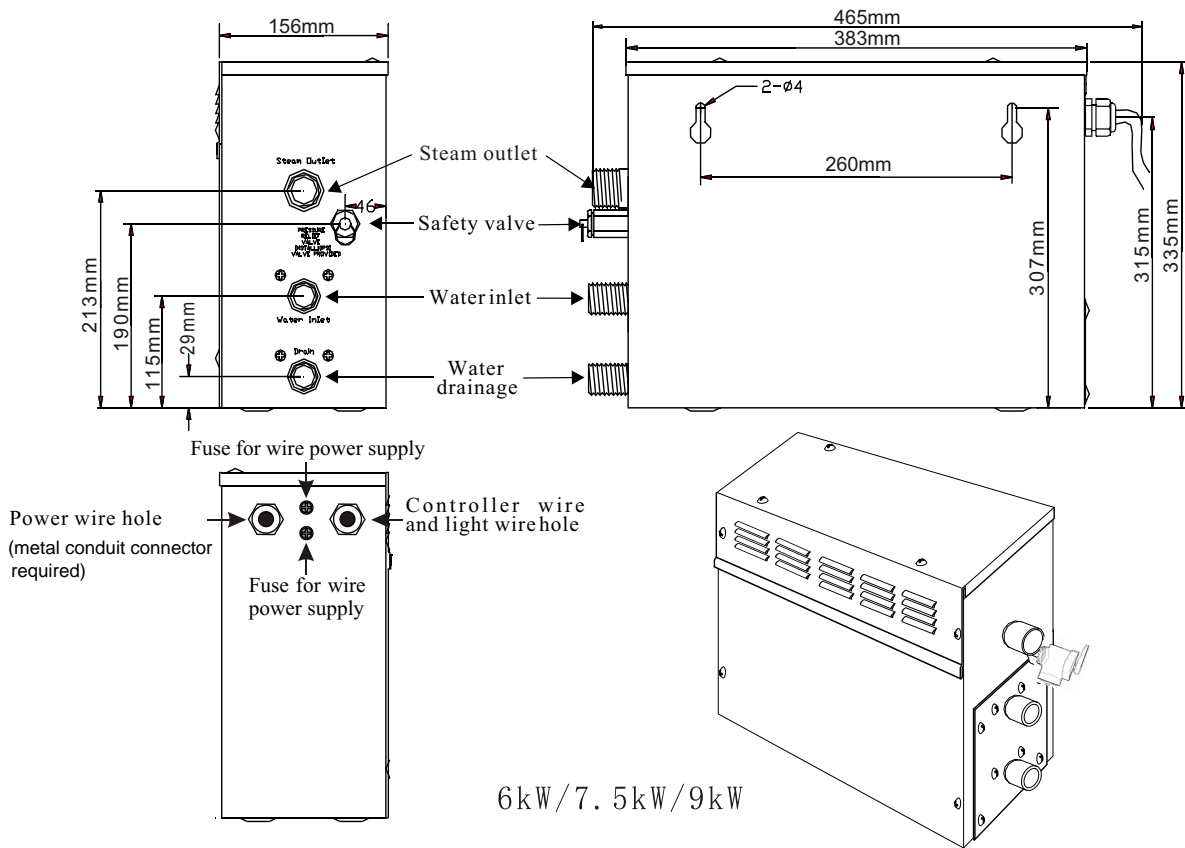
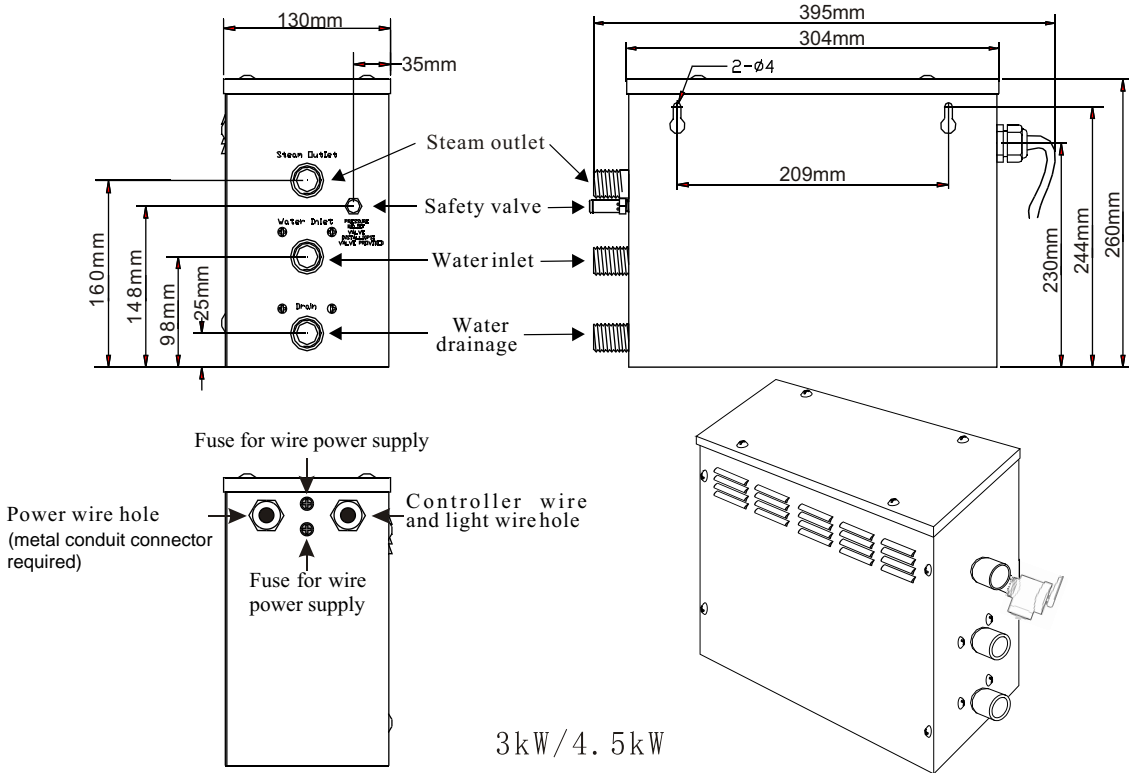
The Pressure safety relief valve must be installed by a qualified licensed experienced plumber.

Steam Generators 18 KW (18000 watts) and higher will have a factory installed Steam Pressure Switch. This switch will cut power to the steam generator when the inside of the boiler tank or steam line(s) pressure reaches over the manufacture's recommended limit. The switch will reset and activate power when the excessive pressure has been substantially reduced. This will re-occur until the cause of excessive pressure has been rectified.

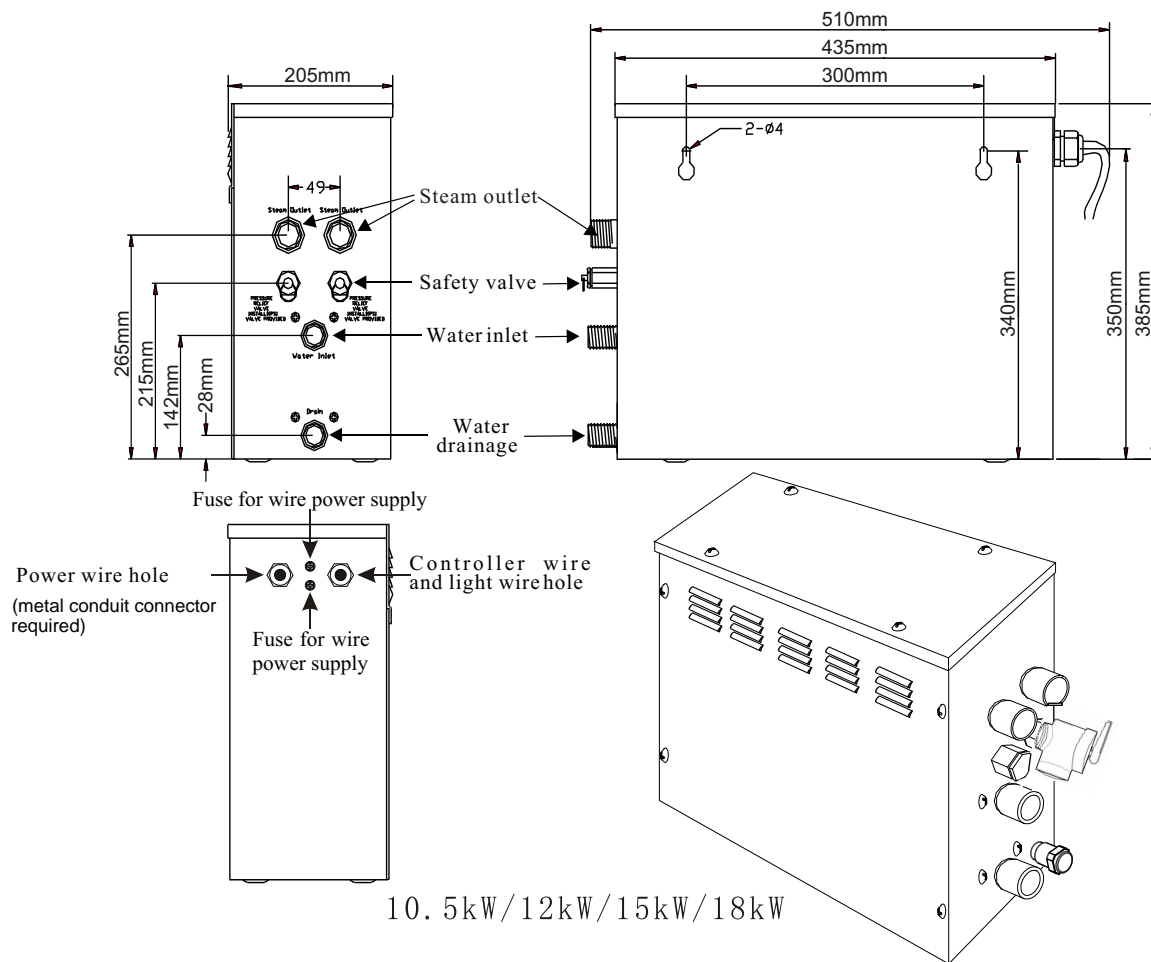


User Manual

Steam generator blue print.



User Manual



Attention: *to facilitate maintenance, keep the steam engine clean. If the information provided is limited, do not touch the pipeline and electric equipment*

Caution: *to avoid damage to the equipment, do not connect strong electric current directly to the components.*

Electrical requirements:

Electricity supply:

1. Test the voltage of electricity supply and make sure steam generator with suitable electric voltage is used.
2. Insulated copper wire should be used with an anti-heat temperature of 90°C and a specified voltage of 300V. Refer to national or local electricity consumption code for specifications.
3. Install an independent circuit breaker between the power supply and the steam generator so to provide an electricity supply with overflow protection and electricity leakage protection.

Attention: *All the connections must be in accordance with national and local electricity consumption code and be installed by professional licensed electricians.*

A suitable metal conduit and metal conduit connector should be used for the main power wiring connections.

User Manual

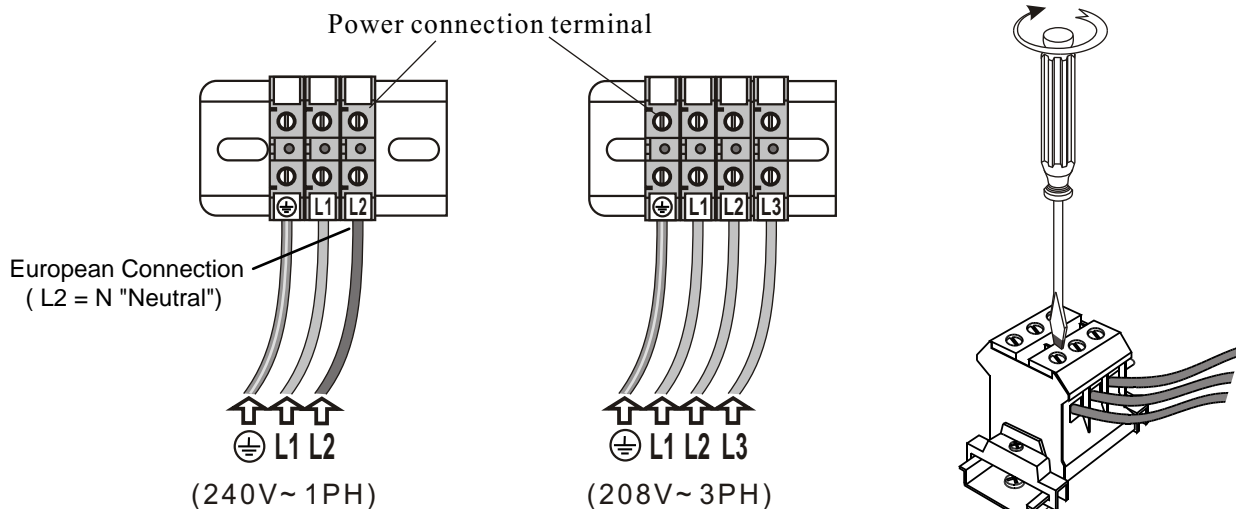
Ampere Meter

The total connected load should not be more than 80% of the rating of the overcurrent devices.

Type	Electricity supply	Applicable space of the room (m ³)	Electric current (A)
3kW	240V~ (1PH)	3~6	12.5A
4.5kW	240V~ (1PH)	4~7	18.75A
6kW	240V~ (1PH)	5~8	25A
7.5kW	240V~ (1PH)	6~10	31.25A
9kW	240V~ (1PH)	8~12	37.5A
	208V~ (3PH)	8~12	25A x 3
10.5kW	240V~ (1PH)	10~13	43.75A
12kW	240V~ (1PH)	12~15	50A
	208V~ (3PH)	12~15	33.3A x 3
13.5kW	208V~ (3PH)	14~18	37.5A x 3
15kW	208V~ (3PH)	15~20	41.7A x 3
18kW	208V~ (3PH)	18~22	50A x 3

The data provided above are for 240V(1PH) and 208V(3PH). Consult the manufacturer for three-phased electricity or electric voltage of other specifications. Within the steam generator, install an independent circuit breaker so as to provide an electricity supply with overflow protection and electricity leakage protection (ground fault interrupter.)

Power Supply Wire Connection

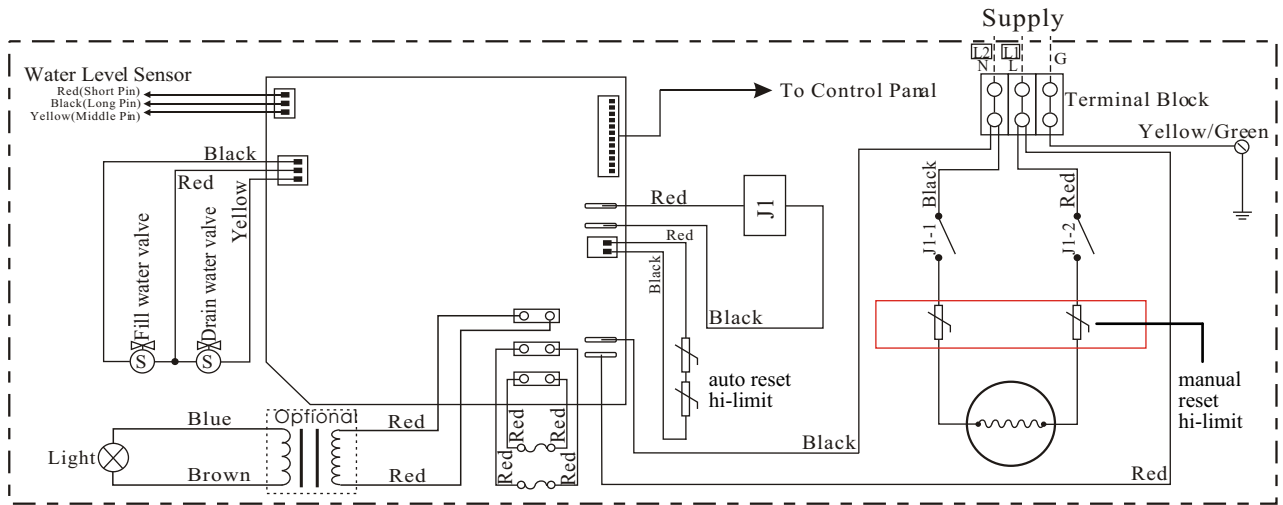


Attention: To avoid damage to the equipment, do not connect strong electric current to the component directly.

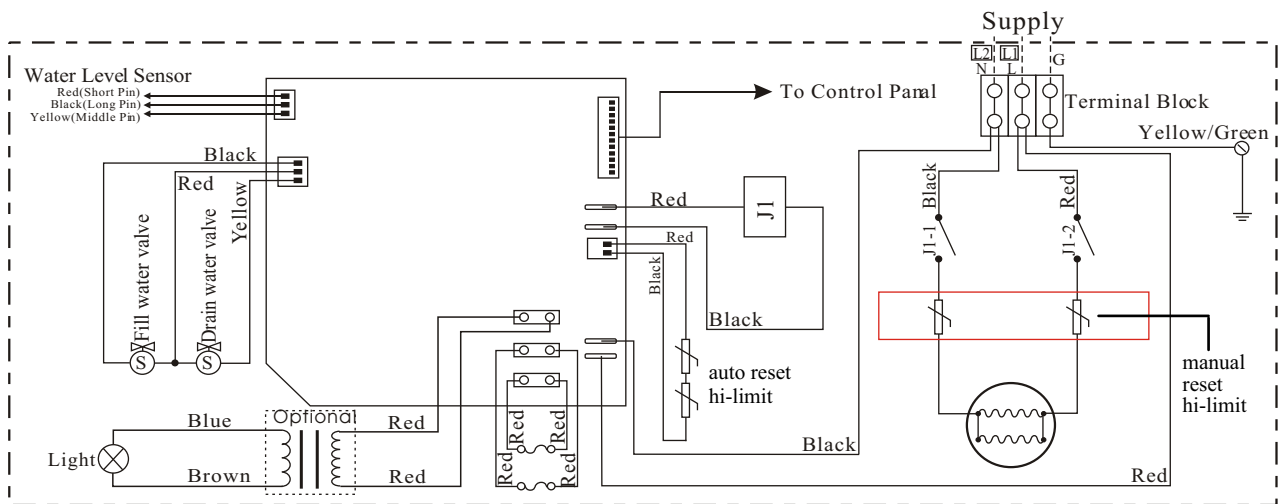
Warning: This drawing is for explanation only. For actual installation, refer to national and local electricity consumption codes by professional licensed electricians.

Steamcore Spa

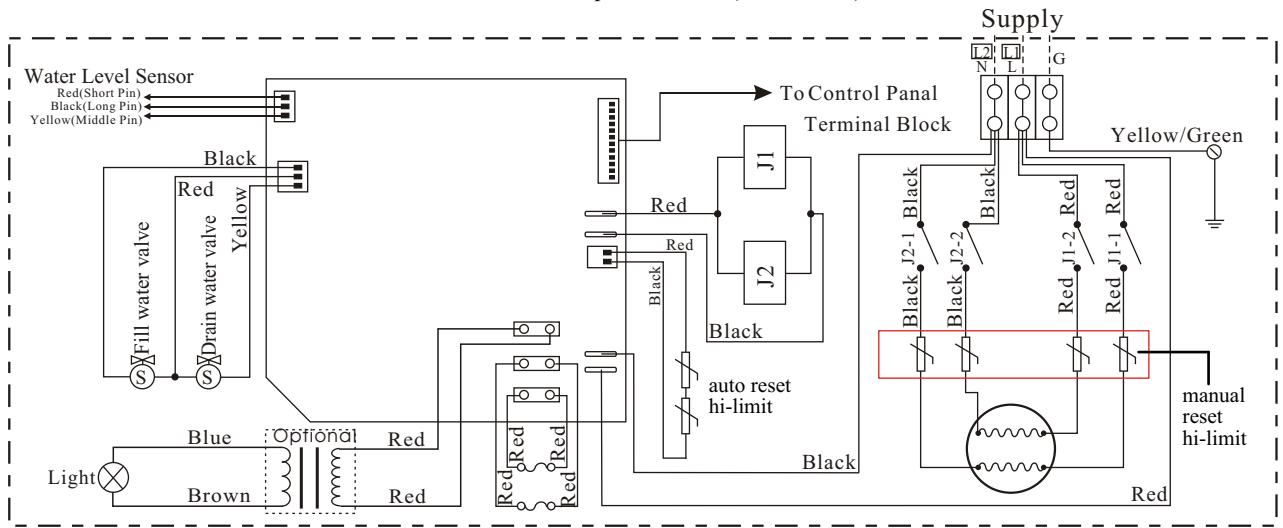
Wiring Diagram 240V(1PH)



Steamcore Spa 3kW (240V - 1PH)

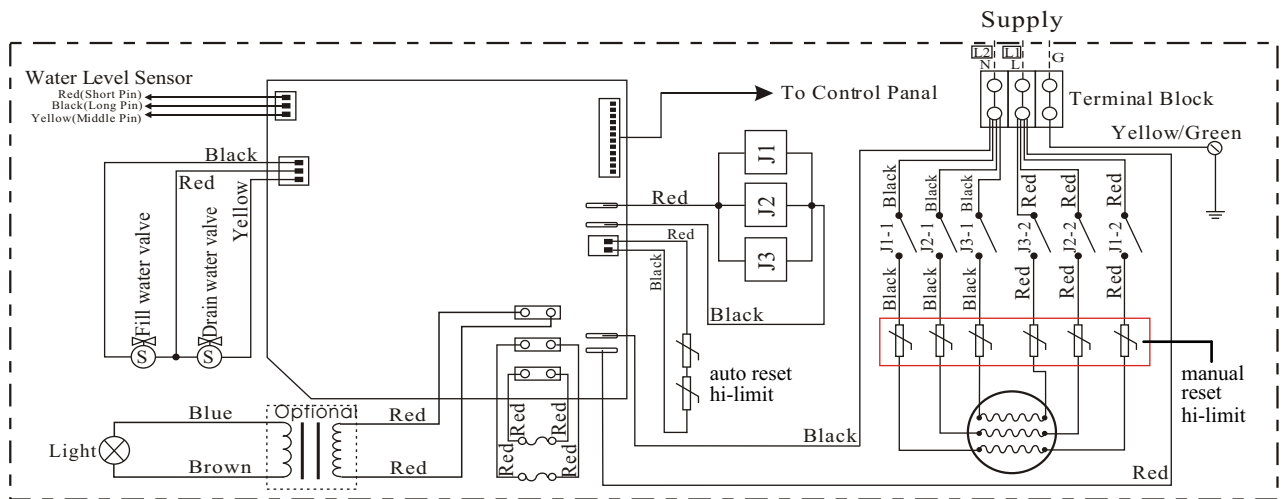


Steamcore Spa 4.5kW (240V - 1PH)



Steamcore Spa 6kW / 7.5kW / 9kW (240V - 1PH)

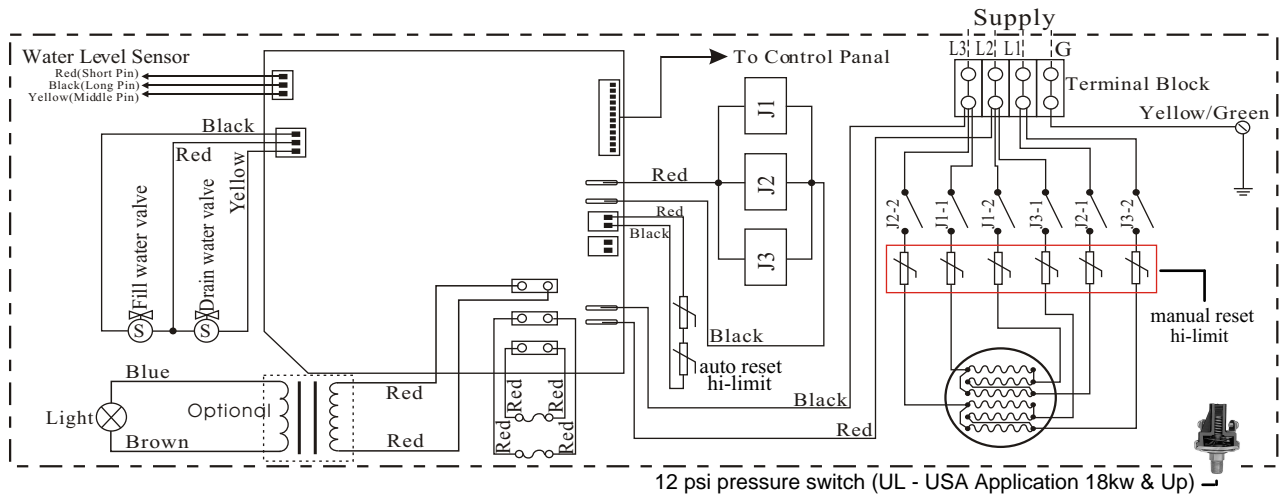
European Connection
(L2 = N "Neutral")



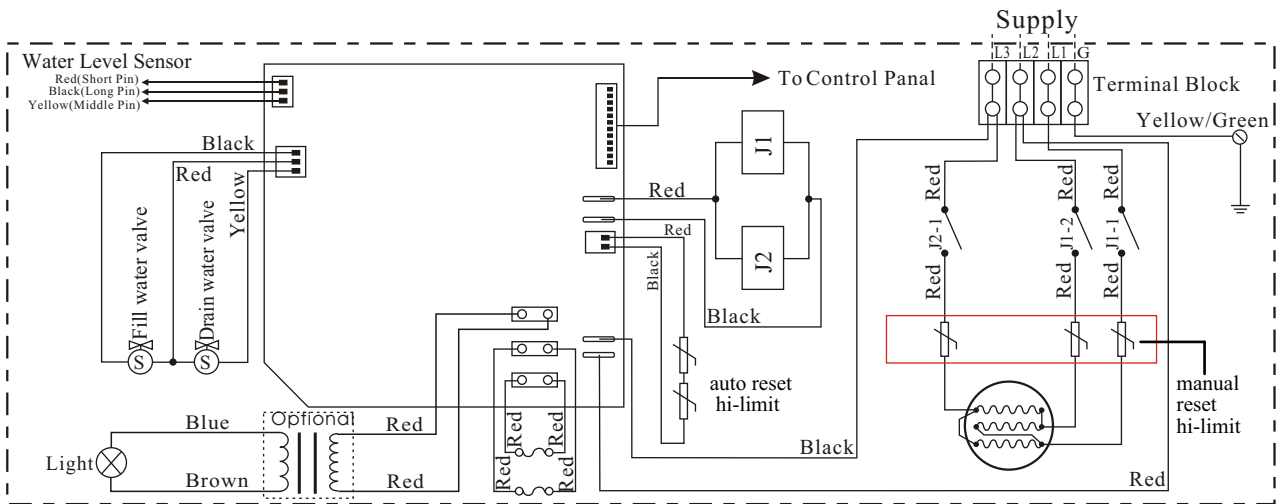
Steamcore Spa 10.5kW / 18kW (240V - 1PH)

Steamcore Spa

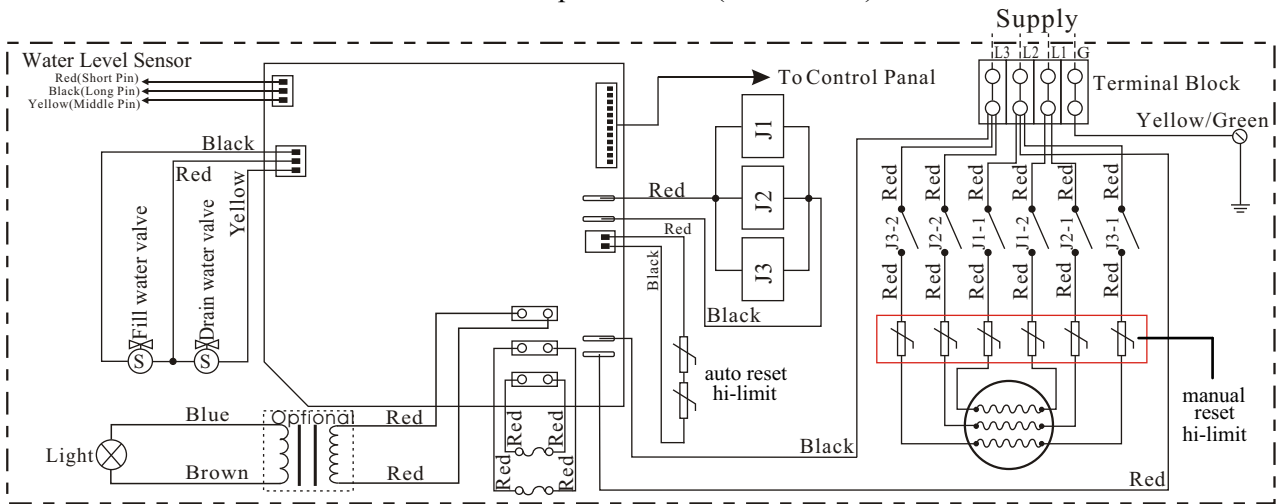
Wiring Diagram 208V (3PH)



Steamcore Spa 15kW / 18kW (208V - 3PH)



Steamcore Spa 9kW (208V - 3PH)



Steamcore Spa 10.5kW / 12kW / 13.5kW (208V - 3PH)

Sizing steam generator

Measure the length, width and height (feet) of the current steam shower or bathtub area that has a ceramic wall finish.

Example;

$L:7 \times W:5 \times H:8 = 280$ Cubic Feet $\times 25\%$ for Ceramic Wall Finish = 61.25 (61.25+280) = 341 Total.

You would need a 9000 watt (9KW) steam generator.

However, if your shower materials are;	(is multiplied by:)
Acrylic, cultured marble.	0.08
Ceramic Tile on Cement Board.	1.30
Ceramic Tile on Mortar Bed.	1.30
Glass or Glass Block	1.35
Porcelain tile on cement board	1.60
NATURAL STONE TILE (marble, granite, slate, travertine, etc)	
On Cement Board.	1.90
On Mortar Bed.	2.00
Natural Stone Slabs over 1/2" thick	2.25
Each Exterior Wall(s) Insulated	1.10 for each outside wall



Important: *The calculation formula for selecting the size of steam generator is for reference only. Due to the variability of the building, the specifications and size illustration are used as guidelines only. If we have complete information, including actual blueprint, project instruction and building details, we can select the type of generator.*

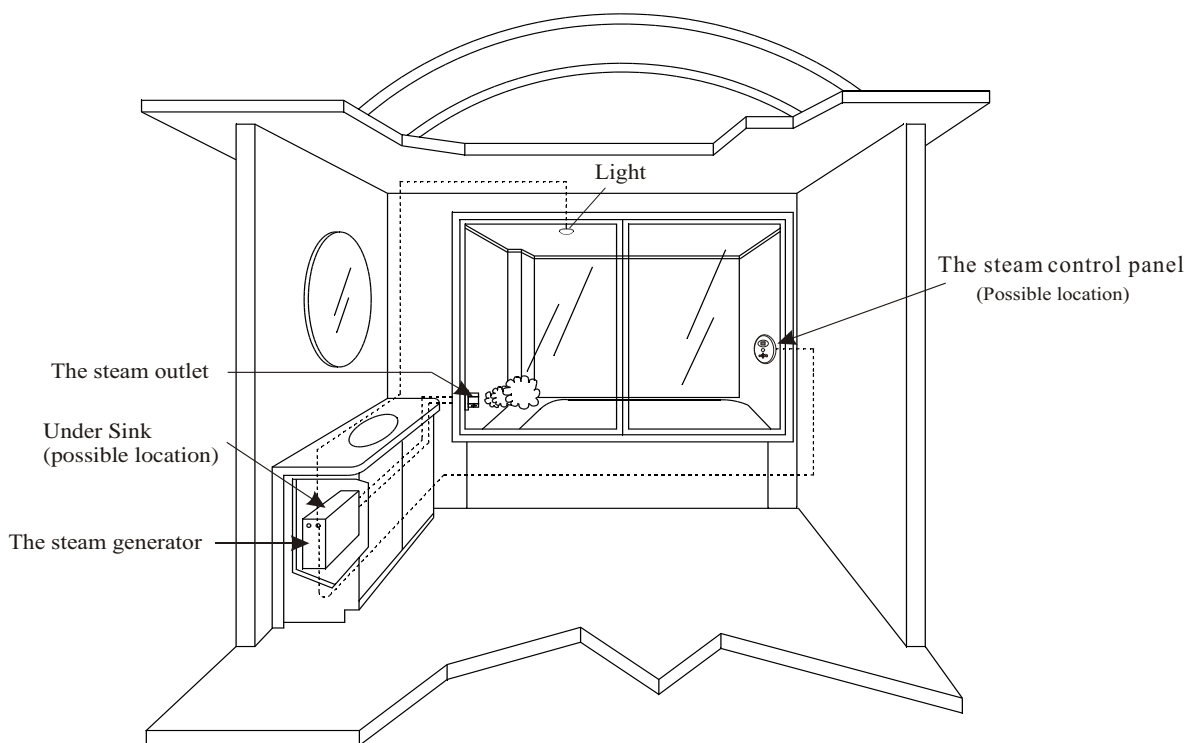
Installation of the top light

CAUTION:

The rating of the light should not surpass 40W(rated power) to prevent damage to the transformer.

The light should be installed on the top of the steam room or in a place which is not accessible to children.

CAUTION: *Take some moisture proof measures in the process of installation. Do not let the electrical components be exposed to moisture or, it will cause damage or short circuit.*

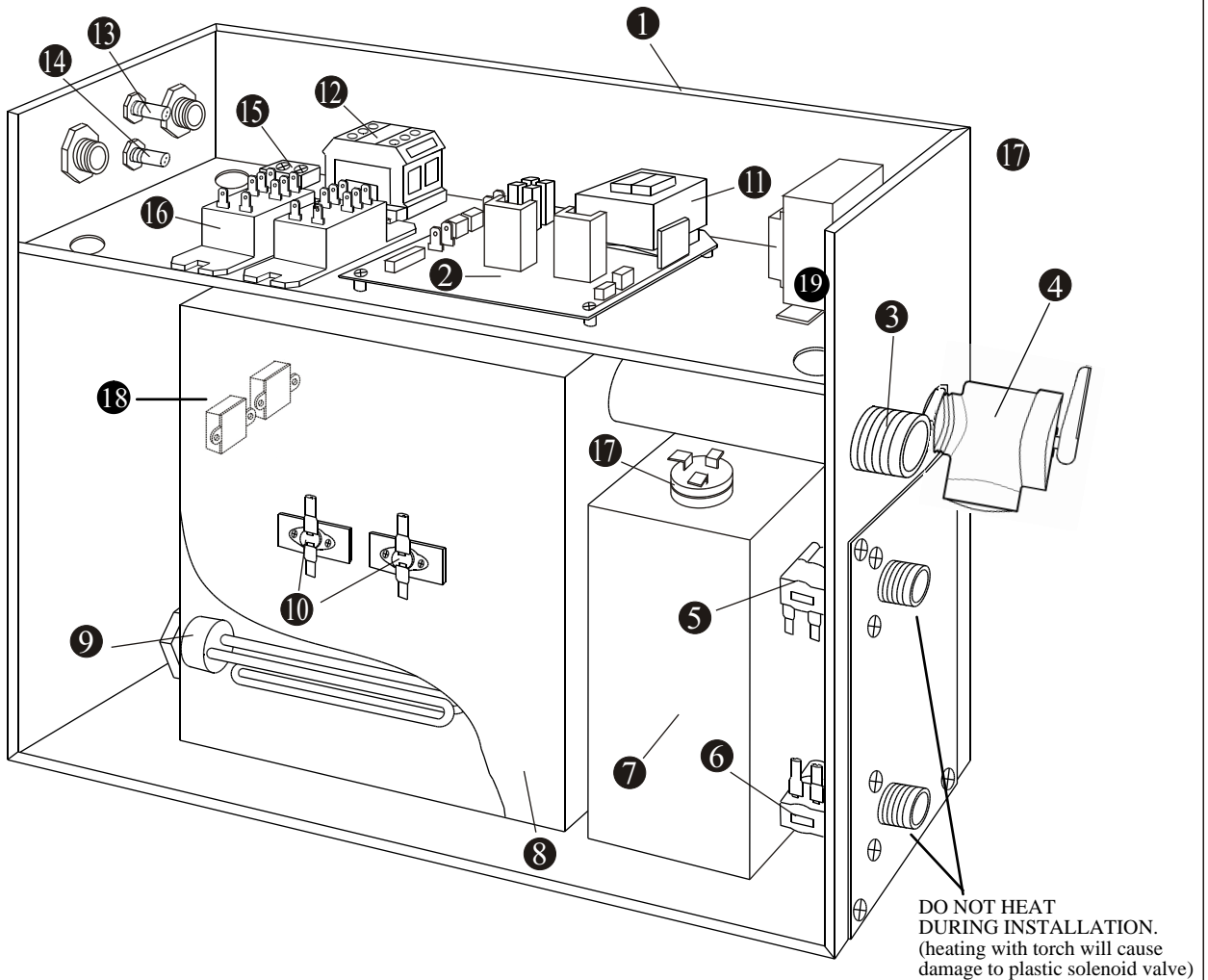


CAUTION:

The illustration is just for explanation, the practical installation must comply with the nation's electric criteria, and performed by a professional licensed electrician.

User Manual

Configuration of steam generator



- | | | |
|-------------------------|-------------------------|--------------------------|
| ① Enclosure | ⑦ Subsidiary water tank | ⑬ Fuse |
| ② Circuit board | ⑧ Main water tank | ⑭ Fuse |
| ③ Steam Outlet | ⑨ Heating Element | ⑮ Ground wire connector |
| ④ Pressure Safety Valve | ⑩ Heat Hi-limit | ⑯ Relay |
| ⑤ Water fill valve | ⑪ Transformer | ⑰ Water level sensor |
| ⑥ Water drain valve | ⑫ Terminal block | ⑱ Manual Reset Hi-Limit |
| | | ⑲ Mood light transformer |



"WARNING"
Heating with torch will cause DAMAGE.

Use teflon tape and rubber gasket (washer) when attaching fittings to the water fill and drain valve to create a liquid tight seal.

Controller Maintenance

1. Use soft cloth with a little soap/water to clean the controller
2. Do not use harsh cleaning tools.
3. If the controller is damaged, call a service electrician to replace it.

Safety and operation information of the controller

**Warning:**

If the installation and operation instruction is not read or understood, do not install. In case there should be any dangerous installation and improper operation.

Install the controller based on the installation instruction otherwise, the temperature in the steam room will be too high or not heated enough.

If the controller is installed outside the steam room, the temperature sensor must be installed in the steam room.

**Caution:**

Do not install the controller wire in the same conduit with high voltage electric wire. Do not install close to hot water or steam pipe

**Important:**

Before installing the controller, make sure the steam generator power is off otherwise the controller may be damaged.

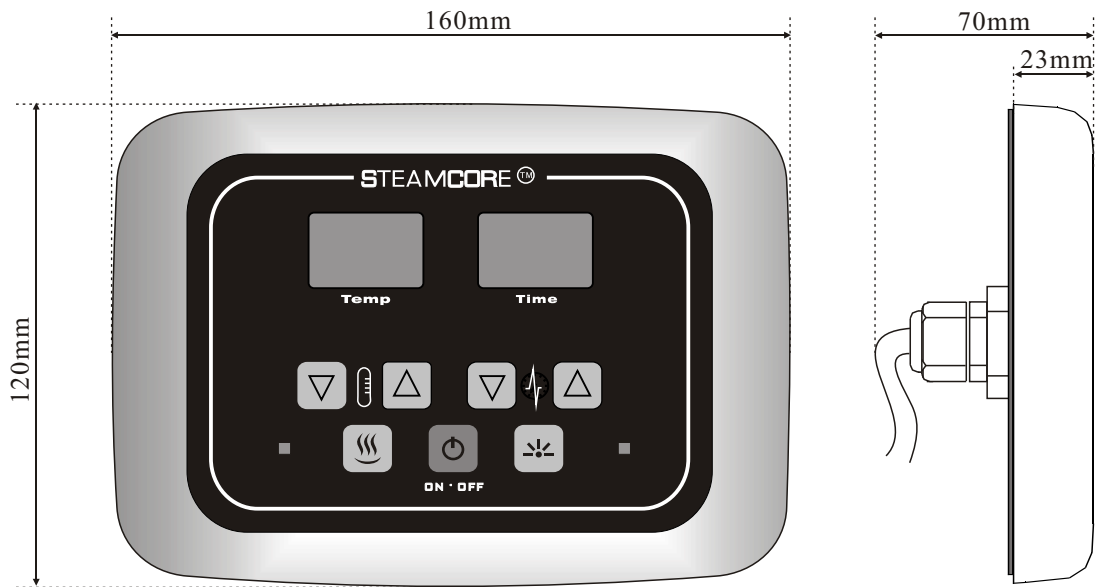
The instruction includes important safety, operation and maintenance information.

Keep the instruction in the user's hands.

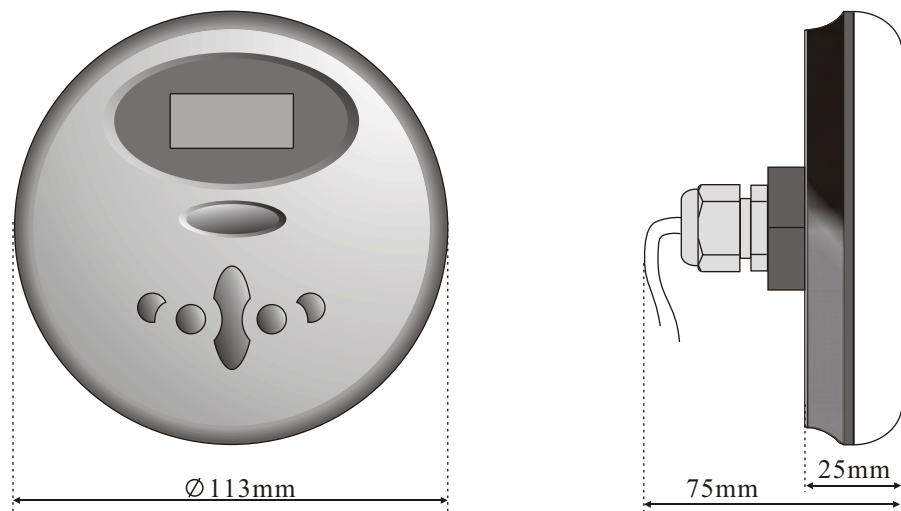
If the steam generator is damaged or does not work normally, do not continue to install or use the controller. Turn main power supply off.

Control panel (both SSI and SSII) dimension

SSI and SSII Control panel may be switched for Spa II



SS I



SS II

Installation instruction of controller

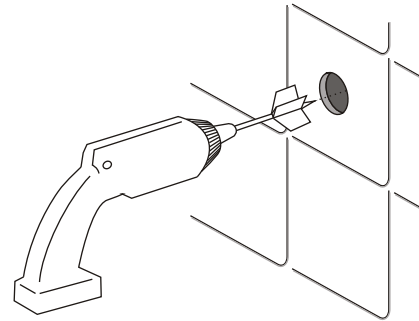
Important: Before installing the controller, make sure the steam generator is shut off otherwise the controller may be damaged.

Step one

Determine the installation location of the controller. The controller is designed to be installed in the steam room :

1. 4-5 feet from the ground.
2. Away from the steam nozzle and do not expose under the direct path of steam.
3. Installation on perpendicular wall.
4. The position of installation should facilitate easy operation and convenient wiring.

The controller wire is 1.0 feet long with a controller lengthened wire of 20 feet long at the most. In the installation of controller, it should be in a position not more than 21 feet from the steam engine. If longer wire is needed, contact professional service personnel.



Important: Do not install the controller under the water pipe or in a position where water comes into contact.

Step two

Drill a round hole of \varnothing 35mm in diameter in a chosen position, no larger or smaller.

Step three

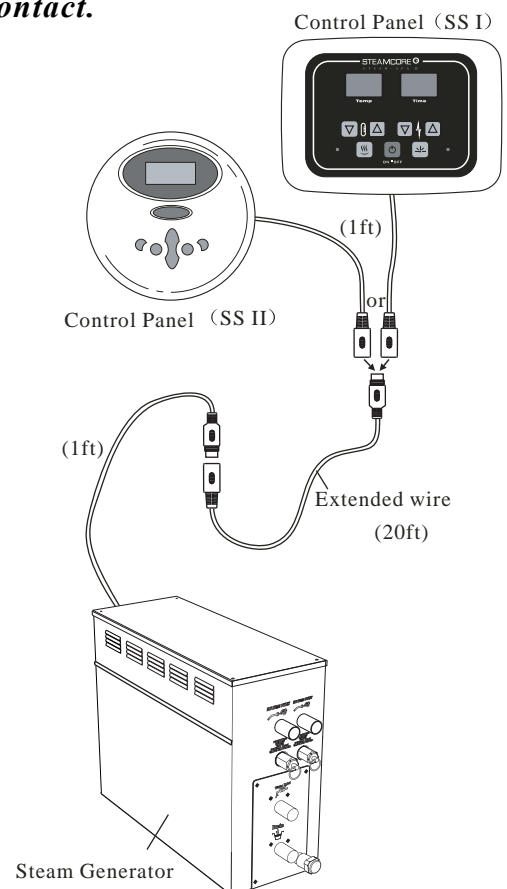
Pull the controller wire through the round hole, connect it to the lengthened wire and then to the steam generator, and connect with the corresponding wire in generator. When the computer wire is plugged in, aim the direction and insert horizontally, instead of shaking at left and right in case the computer needles could be damaged. Do the same when unplugging.

Important: Do not pull tight, or clip tight the controller wire in case of causing damage to it.

Step four

Start the power supply of steam engine, check and adjust connection, check each item on the page to make sure all functions work well.

Important: before repairing the controller, make sure the steam generator is shut off otherwise the controller may be damaged.



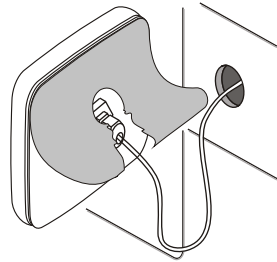
Step five

Remove the paper on the backside.
To achieve good sticking effect, keep the mounting surface clean and dry.

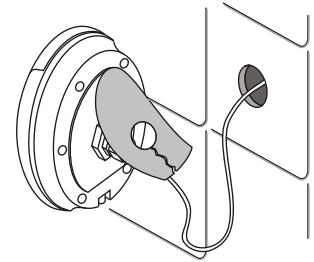
Step six

Locate the display screen in the direction of 12 o'clock, and press tight the controller to stick it to the wall.

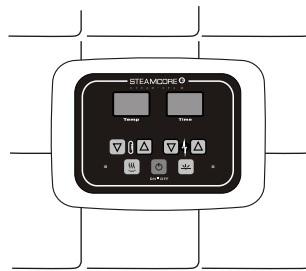
Important: To ensure horizontal installation of the controller, use a level if necessary.



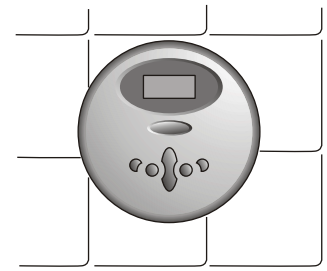
Control Panel (SS I)



Control Panel (SS II)



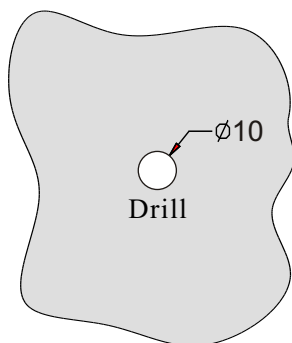
Control Panel (SS I)



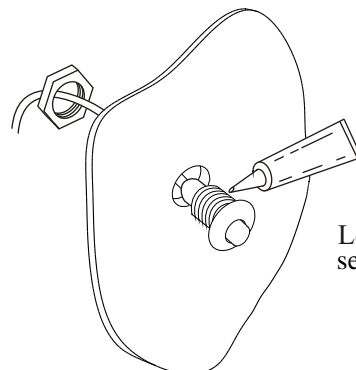
Control Panel (SS II)

Temperature sensor installation(only for SS I Control Panel)

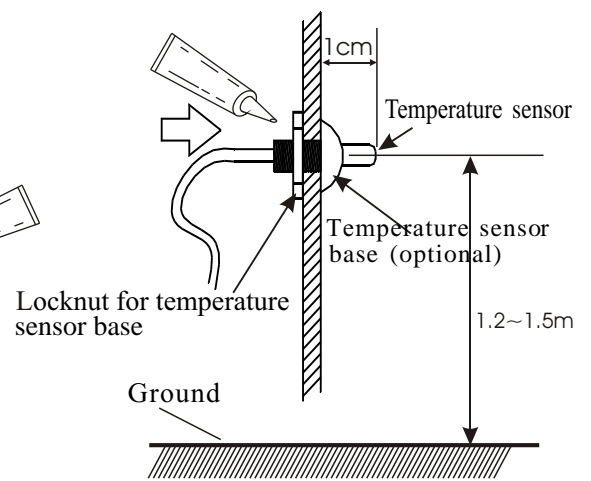
- 1.The position of the temperature sensor should be within a range of 1.2-1.5M above the ground. Try to avoid installing near the steam nozzle or the opening side of the steam room door.
- 2.As shown in Fig.1, drill a small hole of $\phi 10\text{mm}$ in the selected position.
- 3.Apply a circle of silicone along the edge of the back of the sensor base (as shown in Fig.2).
- 4.Use a locknut to lock the sensor foundation. (As shown in Fig.2)
- 5.Let the temperature sensor go through the back of the sensor holder (As shown in Fig.3)
- 6.The temperature sensor should be installed by extending about 1cm from the front of the room to make sure the speed and accuracy of temperature control.
- 7.Apply silicone to the back and fix the sensor. (As shown in Fig.3)



(Fig.1)



(Fig.2)



(Fig.3)

Illustration of the controller panel (SS I Control Panel)



IN/OUT SHOWER USE



- | | |
|--------------------------------------|-------------------------------|
| ① Power ON/OFF | ⑥ LED SCREEN |
| ② Power Indicator LED | ⑦ Steam Time Adjust Key--LOW |
| ③ Steam Temperature Adjust Key--LOW | ⑧ Steam Time Adjust Key--HIGH |
| ④ Steam Temperature Adjust Key--HIGH | ⑨ Mood Light Indicator LED |
| ⑤ Steam ON/OFF | ⑩ Mood Light ON/OFF |



Operation instruction (SS I Control Panel)

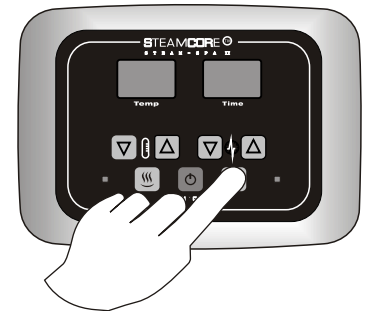
Power ON/OFF

When unit is powered on, power indicator LED should be lit. Press and release  button to activate system and all function buttons. Meanwhile, power indicator LED goes out. Water input steam boiler tank automatically, and LED screens display — — . Shut down the system, press  button again. System drains out water in generator water tank automatically. (NOTE: If power indicator LED flashes when system is activated, it reports that generator water tank is lack of water. System shuts down power supply to heater elements, and opens water inlet valve to refill water until reaching required volume.)






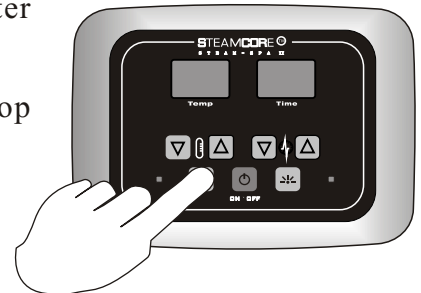
Mood Light

When system is activated, press and release  button to turn on the mood light. Indicator LED on the right of the button should be lit. Press and release  button again to shut down mood light.





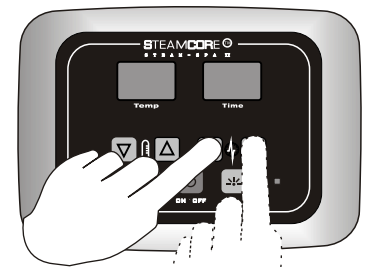
Steam ON/OFF

When unit is powered on, press and release  button, water input steam boil tank automatically, press and release  button, steam starts emitting. Press  button again to stop steam.





Steam Time Setting

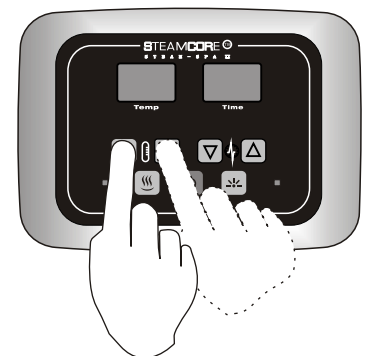
Use  and  buttons to set desired steam time when system is activated. Steam time LED screen shows set time from 5 - 60 minutes. System shuts down power supply to heater elements automatically when desired steam time is over.





Steam Temperature Setting

Use  and  buttons to set desired steam temperature when system is activated. Steam temperature LED screen shows set steam temperature ranging from 5C - 45C or 50F - 110F. . When ambient temperature is higher than desired temperature, system shuts down powersupply to heater elements automatically. Meanwhile, temperature readings on LED screen flash until ambient temperature gets lower than set temperature.

Do NOT set temperature setting more than 110F (45C).



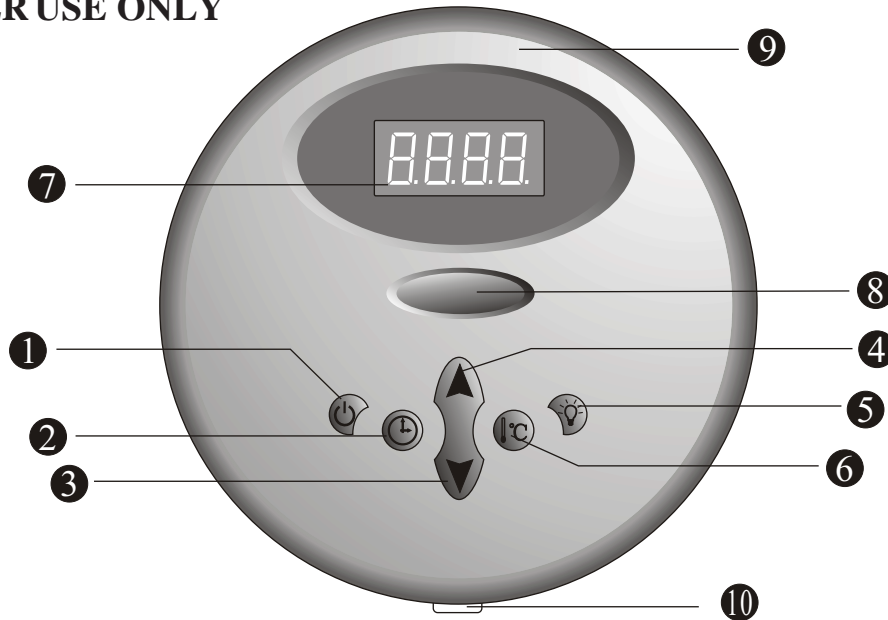
Select Temperature Unit

When system has been turned off, press  and  buttons at the same time, LED screen shows current temperature unit.

TEMP TIME

Illustration of the controller panel (SSII & SQII) Control Panel

IN SHOWER USE ONLY



- ① Power switch ② Time set button ③ Time/temperature decrease button
- ④ Time/temperature increase button ⑤ Light function button
- ⑥ Temperature set button ⑦ Digital display screen ⑧ Steamcore
- ⑨ The front decorative panel ⑩ Temperature sensor

Operation instruction (SSII & SQII Control Panel)

The controller is digital temperature control system which can start, stop or pause in the preset time to keep the temperature in the set number.

ON/OFF



When it is electrified, the system shuts off all the loads to remain in a waiting state, and the digital tube will display ---- (as is shown in Fig.1). In the waiting state, press button  to turn on the system and the steam function. The default time of starting the steam is 30 minutes and it begins to count down and the default temperature of the steam is 110F. After the system is started, the digital tube will display the current temperature of the environment and the temperature check range is 50F - 110F.






Fig.1

User Manual




When the actual temperature is smaller than or equal to 32 F , the digital tube will display 32 F . When the actual temperature is smaller than or equal to 110 F , the digital tube will display 110 F . The last digit displays F as the unit of Fahrenheit temperature. The default start time of steam function is 30 minutes. When the steam is starting, there is a shortage of water, the heating wire will stop heating and the water input valve will start automatically. If there is no water tested in 5 seconds or no water coming to reach the full volume in 15 seconds, the digital tube will flash to display E0 (as shown in Fig.3) to hint mistake. If the water is full, the steam function will return to normal. When the steam function is started, if the temperature of the environment is higher than the set steam temperature, the heating wire will stop heating, the digital tube will flash to display the current environment temperature; when the environment temperature is lower than the set steam temperature, the heating wire will restore heating, the digital tube will display normally current environment temperature.

When the system is started, press  button or when the steam function time is due, the system will be shut. 10 minutes after the system is shut off, the drainage function will be started automatically for 5 minutes.

Time setting

When the machine is started, press  button and the digital tube will display the remaining time of current steam function (as shown in Fig.4), press  button or  button to adjust the remaining time. The adjustment range is 5-60 minutes with minute as one level. If there is no adjustment in 5 seconds, the system will quit the time setting function. The digital tube will restore to display current environment temperature.

Temperature setting

When the machine is started, press  button and the digital tube will display the set steam time (as shown in Fig.5), at the same time the temperature unit will flash to hint that the machine has entered the steam temperature setting function. At this time, press  button or  button to adjust the temperature parameter. The adjustment range is 50-10 °F with 1 °F as one level. If there is no adjustment in 5 seconds, the system will quit the temperature setting function. The digital tube will restore to display current environment temperature.

Do NOT set temperature setting more than 110F (45C)



Fig.2



Fig.3



Fig.4



Fig.5

Light function


When the machine is started, press  button repeatedly to turn on/off light function. When the light is turned on, the digital tube will temporarily display **LON** (as is shown in Fig.6). When the light is turned off, the digital tube will temporarily display **LOFF** (as is shown in Fig.7).



Fig.6




Fig.7

CAUTION:

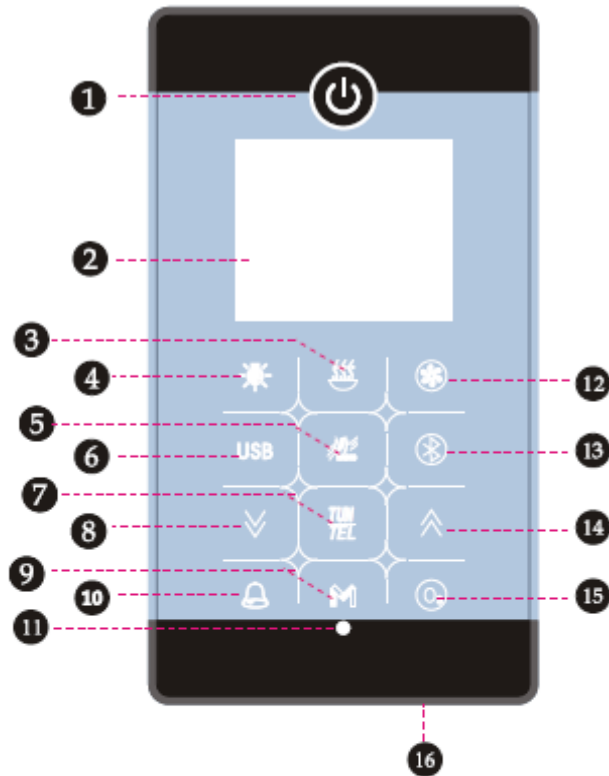
- 1. Please consult your physician before using. If you are pregnant, elderly, have high blood pressure, diabetes, suffering from heart disease, intoxicated, or not in good health, do not use this steam bath.*
- 2. Children must be accompanied with adults when using this steam bath.*
- 3. Steam is hot! Severe burn will occur if you come in contact with the steam head or steam emitting from the steam head.*

Maintenance of the steam generator

 **Important:** *perform water discharge operation after each use.*

1. Wait for the completion of automatic water discharge after each time of using the steam generator to make sure the water in the tank is discharged completely before cutting off power supply.
2. There should not be any leakage or damage among the steam generator, steam nozzle, components and pipes. They should be checked and repaired annually.
3. Clean the water supply pipes of the steam generator once a year.
4. Check all the connections, faucets and connection terminal to see whether they become loose or are damaged due to overheat.
5. Check the furring accumulated in the water tank and electric heating tube. If the furring is thick, dispose it in time (use diluted lemon acid to soak for 15-30 minutes).
6. Remove the water level sensor needle once every 3-4 months to clean scaling.

Ùcæ & [^ Á Q c || ùcæ Á] ^ ! æ ã * Á Q • d ~ & c̄ } •



1	----- ON/OFF Power	9	----- Manual
2	----- Display screen	10	----- Warning button
3	----- Steam	11	----- Remote reception
4	----- Light control	12	----- Fan
5	----- FM/CD on/off	13	----- Bluetooth
6	----- USB	14	----- Increase Key
7	----- FM	15	----- Ozoner
8	----- Decrease Key	16	----- MIC

Congratulations on your new Saunacore steam unit with the advanced IntelliSteam controller!

This booklet will help you get the most enjoyment out of your device's many capabilities and features.

NOTE 1: All controller keys are touch-sensitive, and do not require physical pressure.

NOTE 2: The power button, located on the upper front of the unit, performs several different functions, depending if it's touched momentarily, or "held" for several seconds. It also is an LED indicator which glows:

RED- System in standby mode

GREEN- (Display indicator flashing) Keypad is locked, keys are disabled.

GREEN- (Display indicator is steady) Keypad is unlocked, commands can be entered.

WHITE- System on, radio/CD function in use.

1. Power On/Off

When the system is in standby mode (Indicator is Red), touch the **Power Key** for 3 seconds or more. The display will light up, and glow green. Momentarily touching the **Power Key** returns the unit to standby. The unit will enter auto-shutdown in 1 hour if no buttons are touched during that time.

2. Unlocking the controller

If no function keys are touched for 20 seconds, the system will auto-lock the keypad, and the **Dotted line/ Solid line** indicator on the display screen will flash. Touching the **Power Key** for 3 seconds will unlock the system, making all keys active.

3. Using the Steam Function

With the system on, touch the **Steam** key to initiate steam generation. (The radio must be off to initiate the steam function). An indicator will show this operation on the display. Default temperature is set at 45deg. C. The timer default is set at 60 minutes. An indicator will flash several times while the water is being filled. (In the event the water supply to the unit is interrupted, the indicator will flash continuously, and the steam function will shut off).

4. Steam Adjustments

(Power on, steam function selected)

1. **Steam Time** adjustment: Touch the **M** key to select "time", and use the **Up** or **Down** keys to choose your preferred time, from 1-60 minutes.

2. **Steam temperature** adjustment: Touch the **M** key a second time to select temperature, and use the **Up** or **Down** keys to choose your preferred temperature, from 25deg C to 45deg. C.

5.Ozoner (opt)

With the system on, touch the **O3** key to initialize the ozone function (if unit so equipped). To turn off, touch the **O3** key again.

6.Fan (opt)

With the system on, touch the **Fan** key to turn it on. The display will indicate fan operation.

7.Light (opt)

The **Light** key will operate the lights in several ways, as follows:

With the system on, touching the **Light** key once turns on the background light (display shows L1). Touch it again, and the top light also comes on (display shows L2). A third touch turns them both off.

8.FM/CD

Your **IntelliSteam** controller comes with a built-in FM tuner. Touching the **Radio** key once will turn on the tuner. This is indicated on the main screen as a standard radio tuner. Touching the key a second time switches the function to CD (if unit so equipped). This will be indicated on the screen instead of the tuner. A third touch shuts the CD function off completely. If no CD is installed, touching the **Radio** key a second time will simply turn off the radio function.

9.Radio Tuning/Search

(Power on, radio function selected)

1. Auto-search/ store: Touch the **TUN** key for 2 seconds or more to turn on auto-search/store. The tuner range is from 97.5-108.0MHZ, reception location-dependant. This will store the strongest available signals in memory.
2. Manual-search/ store: Touch the **TUN** key momentarily , and the tuner indicator will flash. Touch the **Up** or **Down** keys to tune in your desired station, then touch the **TUN** key to store it in memory.
- 3.To add a favourite station, again use the **Up** or **Down** keys to find a favoured station. Once you have, touch the **TUN** key to store it. Up to 32 stations can be stored. (Storage locations are named c1, c2, c3, etc. on the display).
4. Volume adjustment: Touch the **TUN** key and use the **Up** or **Down** keys to adjust the volume to your preference. Volume is shown on the display as a number, then a "d". (for example, 25d, 30d, 35d, etc.).

10. MP3 Feature

Turn on the system, and plug your flash drive into the provided USB slot. Touch the **USB** key, and your music will play automatically. The screen will display the current music title, remaining time, etc. Press the **Up** key to jump to the next track (s), or the **Down** key for the previous track(s). Touch the **TUN/TEL** key to pause playing, and touch it again to resume. Touch the **USB** key again to turn it off.

11. Bluetooth

1. First, turn on your smart phone's Bluetooth function, and search for new devices. (normally, there is one Bluetooth device to be found). This should be done in close proximity to your **IntelliSteam** controller.
2. With the system on, touch the **Bluetooth** key. The indicator will flash, and a "bt" will be indicated on the display.
3. Select the device Bluetooth on your phone, and the pair should connect automatically. Once this occurs, the indicator will remain lit, confirming a successful connection. Some smartphones may require entering a password during the pairing connection process. Use the default "0000" password for this. After connecting, touch the **Bluetooth**. Now you can use Bluetooth to play music or answer a call. Touching the **Up** key skips to the next song, and touching the **Down** key skips back to the previous one. Touch **TUN/TEL** to pause playing, and again to resume play. When you receive an incoming phone call, touch **TUN/TEL** to answer, and again to hang up. Touching the **Bluetooth** key again will turn off the Bluetooth function.
4. Each time the control panel is turned on, it will search for the last connected Bluetooth device, and attempt to reconnect to it automatically.

12. Telephone

(Incoming calls only)

This function (if line is installed) utilizes the unit's built-in microphone, on the bottom right of the controller. When a call comes in, the speakers are muted, and the **TUN/TEL** indicator will flash. To answer, touch the **TUN/TEL** key. Touching the **Up** or **Down** keys will adjust the volume to your preference. To hang up, simply touch the **TUN/TEL** key again.

13. Warning System

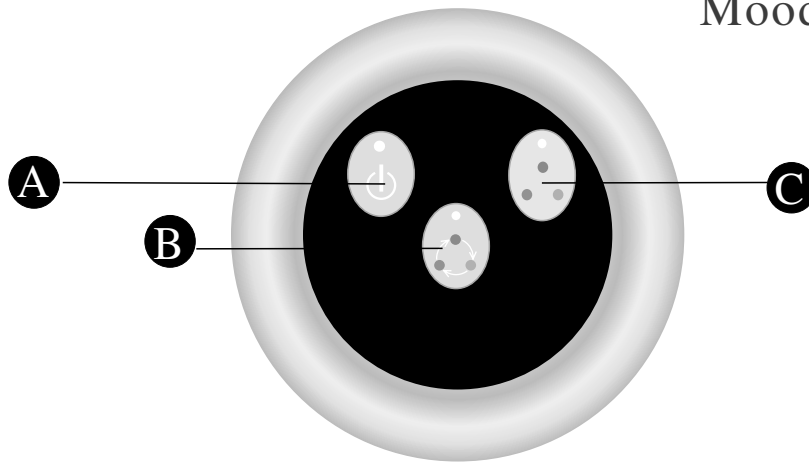
In the event of an emergency, a warning key is built-in to each **IntelliSteam** controller, giving you an added measure of assurance. With the system on, a touch of the **Warning** key will cause a loud alarm to sound, and turn on the lights and fan. This can easily be turned off by touching the **Warning** key again.



1	----- Temperature	8	----- Ozoner
2	----- Temperature setting	9	-----Telephone
3	----- Time setting	10	-----FM tuner
4	----- Radio	11	-----FM tuner setting
5	----- CD	12	-----Locked mark
6	-----Lack of water	13	-----Fan
7	----- Steam	14	-----Light

This set of instruction pages is to be used in combination with the Steamcore Steam Bath installation manual provided with each steam bath generator.

Mood Light Control










- A** Power on/off **C** Manual colour change
B Automatic colour change


Function

1. Manual colour change;
2. Auto colour change
3. 30minutes by default;
4. Auto colour change w/o panel

Instruction

A. Push  button to activate unit, system recalls all functions unfinished the last time used and presets working time to 30 minutes by default; Press  Button to change light colour automatically; Push button to change  Light colour manually; Push  again to deactivate system.

B. Change colour automatically
When unit is powered on, Press  button, light changes colour automatically as preprogrammed and each colour remains for 5seconds. Push button  again, lamp keeps present colour, push  button for the third time, lamp goes back to changing colour automatically.

C. Change colour manually
Each time  button is pressed, light changes one colour in the following order: White- red- purple- blue- yellow- green- orange

Technical Data

Working Condition			
Voltage inlet	AC 230 V	Rated Frequency	50HZ
Voltage outlet	DC12V	Rated current	300mA
Others	—————		
Max input voltage(DC) of lamp $V_{max} = DC18V$			

Remark:

1. Input voltage is associated with the supplied transformer. It can be 110V inlet volts.
2. Unit would be damaged if the input voltage exceed the Max limit.

User Manual

Common trouble shooting methods

To facilitate your use and maintenance of sauna room, the following common trouble shooting methods are listed for reference.

Troubles	Causes of troubles	Trouble-shooting methods
The machine does not start when electrified	<ol style="list-style-type: none"> 1.The fuse is burned. 2.The wire connection terminal becomes loose. 3.Not good contact in the connection wire between the controller and the steam engine. 	<ol style="list-style-type: none"> 1.Change the fuse (on the shell 0.8A/ 250V) 2.Plug tight the wire connection terminal 3.Make sure the steam engine and the controller come into good contact
Electricity leakage switch breaks automatically	<ol style="list-style-type: none"> 1.The wire connector is dampened or damaged. 2.The heating tube breaks 	<ol style="list-style-type: none"> 1.Check whether the wire connector is dampened or damaged, and dry with dryer if dampened. 2.Change a heating tube.
When the machine is started, hot water comes out with little or no steam	<ol style="list-style-type: none"> 1. The water drainage valve is broken. 	<ol style="list-style-type: none"> 1. Change a water drainage valve.
The display screen on the control panel does not display	<ol style="list-style-type: none"> 1.The power wire is not connected well or not in good contact. The connection plug between the control panel and the electrically-controlled box becomes loose. 2.Trouble with plugboard. 	<ol style="list-style-type: none"> 1.Check whether the connection plug between the control panel and the electrically-controlled box has become loose, and whether the power circuitry has good contact 2.Change a plugboard.
Water leakage	<ol style="list-style-type: none"> 1.The water pipe connector becomes loose or the pipe breaks 2.Water leakage in the water input valve or the water drainage valve 	<ol style="list-style-type: none"> 1.Tighten the loose connector, and change the broken pipe. 2.Change the water input valve or the water drainage valve.
No steam when starting the machine	<ol style="list-style-type: none"> 1.No electricity. 2.No water. 3.The set temperature is too low 4.Trouble with wire. 	<ol style="list-style-type: none"> 1.Check the power supply 2.Check the water input pipe and water input valve 3.Reset the temperature 4.Contact the distributor
The steam does not come out, the water sounds in the machine	<ol style="list-style-type: none"> 1. The steam pipe is jammed. 	<ol style="list-style-type: none"> 1. Cut power supply to check whether the steam pipe is smooth.
The light can not be turned on	<ol style="list-style-type: none"> 1. The fuse is burned. 2. The light is broken 3. The wire is broken 4. The plug does not have good contact 	<ol style="list-style-type: none"> 1.Change the fuse (on the shell 1A/250V) 2. Change a light bulb. 3. Change wire. 4. Make the contact good.
The display box displays normally with no steam input	<ol style="list-style-type: none"> 1.Too much pressure inside the steam engine, so the system breaks for heat protection. 2.Wire is broken for heat protection. 	<ol style="list-style-type: none"> 1.Check the steam transport pipe and restore automatically after heat protection becomes cool. 2.Check the heat protection wire to make sure the connection is good.


User Manual

 **Important:** Consult a licensed electrician for service.

Technical parameter

TYPE: Steamcore Spa II

Power Output	3kW	4.5kW	6kW	7.5kW	9kW		10.5kW	12kW		13.5kW	15kW	18kW
Power Supply	240V (1PH)	240V (1PH)	240V (1PH)	240V (1PH)	240V (1PH)	208V (3PH)	240V (1PH)	240V (1PH)	208V (3PH)	208V (3PH)	208V (3PH)	208V (3PH)
Current(A)	12.5A	18.75A	25A	31.25A	37.5A	25A x 3	43.75A	50A	33.3A x 3	37.5A x 3	41.7A x 3	50A x 3
Potency Error	±10%	±10%	±10%	±10%	±10%		±10%	±10%		±10%	±10%	±10%
Duration	>1500V	>1500V	>1500V	>1500V	>1500V		>1500V	>1500V		>1500V	>1500V	>1500V
Resistance	>20MΩ	>20MΩ	>20MΩ	>20MΩ	>20MΩ		>20MΩ	>20MΩ		>20MΩ	>20MΩ	>20MΩ
Mood Light	12V/40W	12V/40W	12V/40W	12V/40W	12V/40W		12V/40W	12V/40W		12V/40W	12V/40W	12V/40W
Steam TEMP Range	50-10F	50-10F	50-10F	50-10F	50-10F		50-10F	50-10F		50-10F	50-10F	50-10F
Steam Time Range	~ Min	~ Min	~ Min	~ Min	~ Min		~ Min	~ Min		~ Min	~ Min	~ Min
Steam Pressure	0.12MPa	0.12MPa	0.13MPa	0.14MPa	0.14MPa		0.15MPa	0.16MPa		0.17MPa	0.18MPa	0.19MPa
Steam Volume	140ml/Min	160ml/Min	180ml/Min	220ml/Min	260ml/Min		300ml/Min	360ml/Min		400ml/Min	450ml/Min	500ml/Min
Steam Production Time	100-150S	90-120S	100-160S	90-140S	80-130S		180-240S	150-160S		130-150S	120-150S	90-140S
Water Tank Volume	2.5L	2.5L	5.7L	5.7L	5.7L		12L	12L		12L	12L	12L
Working space	3~6	4~7	5~8	6~10	8~12		10~13	12~15		14~18	15~20	18~22

 **Important:** The parameter listed in the table will vary from different place and temperature, please consult with qualified designer and architect for more detailed use.

Steambath Generator Limited Warranty

STEAMCORE

Spa II Series Steambath Generator Limited Warranty

Saunacore warrants these products to be free from defects in material and workmanship and agrees to remedy any such defect. This warranty does not apply outside the boundaries of the United States, Canada or any product which in our sole opinion has been improperly installed, or subject to willful abuse, misuse, alteration, and shipping damages during the period of coverage. Postage and handling charges of the product to and from Saunacore for warranty repairs and for any related charges for the installation / removal of these products are NOT included in your warranty. Warranty service can be obtained by sending your product to Saunacore (Call 905-951-6662). Warranty repairs must be done only by Saunacore. Proof of purchase and a serial number of the product will be required before any services are performed. Warranty applies only to the original consumer purchaser, warranty is non-transferable. For warranty repair, the steam generator must be returned to Saunacore with an Return materials Authorization # and is to be obtained by the original consumer purchaser and must be shown on all correspondence and packing, without this RMA # returns for repairs will NOT be accepted.

Controls & Cables: One Year Parts and Labor

Steam Generator Only: One Year Parts and Labor
 Second Year to Fifth Year Warranty Claim Fee (Admin/Deductible Fee) Applies \$150.00

Steam Generator Components: Continuing after First Five Years of original consumer purchase date.

Components Only Coverage

Components Warranty (excluding auto drain, control, and cables) provided the original consumer purchaser agrees to pay all labor costs/fees incurred in connection with such repair. Warranty work will be performed when the steam generator is returned to a designated Saunacore location with a RMS number.

WARRANTY does not cover damages caused by Calcium, Lime Stone build up or corrosion to the components to the steam generator.

Warranty Registration Card

Model # _____ Serial # _____

Purchase Date _____

Dealer Name and Address

Owner Name and Address

NOTE: A COPY OF THE RECEIPT MUST ACCOMPANY THIS WARRANTY CARD.