

# SINGLE NUMBERS

4  
6



# FONT RAIL

H: mm 100

EN WIDTH OF EACH SINGLE LETTER IT LARGHEZZA DI OGNI SINGOLA LETTERA FR LARGEUR DE CHAQUE LETTRE UNIQUE ES ANCHO DE CADA LETRA

EN

**Horizontal orientation**

Space between the letters is mm 15

IT

**Orientamento orizzontale**

Spaziatura fra le lettere pari a mm 15

FR

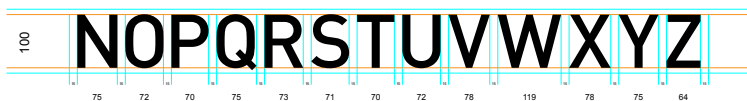
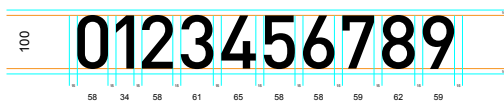
**Orientation horizontale**

Espacement entre les lettres égal à 15 mm

ES

**Orientación horizontal**

Espaciado entre las letras igual a 15 mm



58A

readability

Average readability of the text: m 4



EN

**Vertical orientation**

Space between the letters 10 mm except the letter Q which has a space of 7,5 mm at the bottom.

IT

**Orientamento verticale**

Spaziatura fra le lettere è pari a mm 10 ad eccezione della Q che presenta una spaziatura pari a mm 7,5 nella parte inferiore.

FR

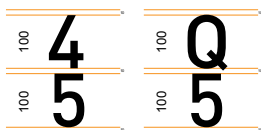
**Orientation verticale**

La distance entre les lettres est de 10 mm sauf pour le Q qui a un espacement en bas de 7,5 mm.

ES

**Orientacion vertical**

La distancia entre las letras es de 10 mm. a excepción de la Q que tiene espaciado inferior 7,5 mm.



# FONT RAIL

H: mm 200

EN WIDTH OF EACH SINGLE LETTER IT LARGHEZZA DI OGNI SINGOLA LETTERA FR LARGEUR DE CHAQUE LETTRE UNIQUE ES ANCHO DE CADA LETRA

EN

**Horizontal orientation**

Space between the letters is mm 30

IT

**Orientamento orizzontale**

Spaziatura fra le lettere pari a mm 30

FR

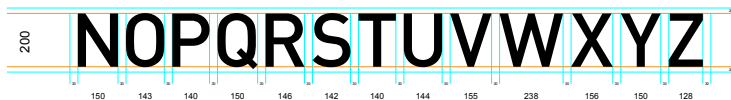
**Orientation horizontale**

Espacement entre les lettres égal à 30 mm

ES

**Orientación horizontal**

Espaciado entre las letras igual a 30 mm



58A

readability

Average readability of the text: m 8



EN

**Vertical orientation**

Space between the letters 20 mm except the letter Q which has a space of 15 mm at the bottom.

IT

**Orientamento verticale**

Spaziatura fra le lettere è pari a mm 20 ad eccezione della Q che presenta una spaziatura pari a mm 15 nella parte inferiore.

FR

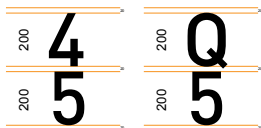
**Orientation verticale**

La distance entre les lettres est de 20 mm sauf pour le Q qui a un espacement en bas de 15 mm.

ES

**Orientacion vertical**

La distancia entre las letras es de 20 mm. a excepción de la Q que tiene espaciado inferior 15 mm.



# FONT RAIL

H: mm 300

EN WIDTH OF EACH SINGLE LETTER IT LARGHEZZA DI OGNI SINGOLA LETTERA FR LARGEUR DE CHAQUE LETTRE UNIQUE ES ANCHO DE CADA LETRA

EN

### Horizontal orientation

Space between the letters is mm 45

IT

### Orientamento orizzontale

Spaziatura fra le lettere pari a mm 45

FR

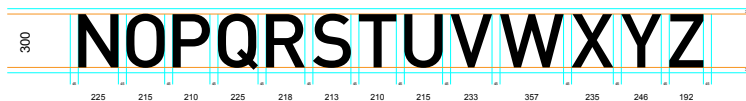
### Orientation horizontale

Espacement entre les lettres égal à 45 mm

ES

### Orientación horizontal

Espaciado entre las letras igual a 45 mm



58A



readability

Average readability of the text: m 12

EN

### Vertical orientation

Space between the letters 30 mm except the letter Q which has a space of 22,5 mm at the bottom.

IT

### Orientamento verticale

Spaziatura fra le lettere è pari a mm 30 ad eccezione della Q che presenta una spaziatura pari a mm 22,5 nella parte inferiore.

FR

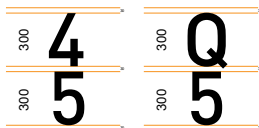
### Orientation verticale

La distance entre les lettres est de 30 mm sauf pour le Q qui a un espacement en bas de 22,5 mm.

ES

### Orientacion vertical

La distancia entre las letras es de 30 mm. a excepción de la Q que tiene espaciado inferior 22,5 mm.



# FONT RAIL

H: mm 400

EN WIDTH OF EACH SINGLE LETTER IT LARGHEZZA DI OGNI SINGOLA LETTERA FR LARGEUR DE CHAQUE LETTRE UNIQUE ES ANCHO DE CADA LETRA

EN

**Horizontal orientation**  
Space between the letters is mm 60

IT

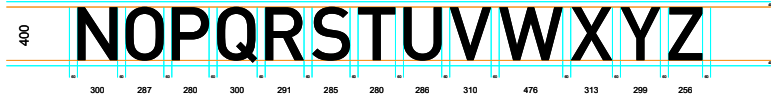
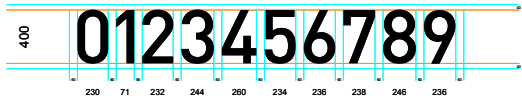
**Orientamento orizzontale**  
Spaziatura fra le lettere pari a mm 60

FR

**Orientation horizontale**  
Espacement entre les lettres égal à 60 mm

ES

**Orientación horizontal**  
Espaciado entre las letras igual a 60 mm



58A



readability

Average readability  
of the text: m 12

EN

**Vertical orientation**  
Space between the letters 40 mm except the letter Q which has a space of 30 mm at the bottom.

IT

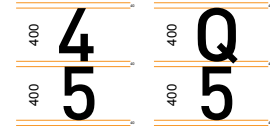
**Orientamento verticale**  
Spaziatura fra le lettere è pari a mm 40 ad eccezione della Q che presenta una spaziatura pari a mm 30 nella parte inferiore.

FR

**Orientation verticale**  
La distance entre les lettres est de 40 mm sauf pour le Q qui a un espacement en bas de 30 mm.

ES

**Orientacion vertical**  
La distancia entre las letras es de 40 mm. a excepción de la Q que tiene espaciado inferior 30 mm.



# FONT VARSAVIA

H: mm 100

EN WIDTH OF EACH SINGLE LETTER IT LARGHEZZA DI OGNI SINGOLA LETTERA FR LARGEUR DE CHAQUE LETTRE UNIQUE ES ANCHO DE CADA LETRA

EN

**Horizontal orientation**

Space between the letters is mm 10

IT

**Orientamento orizzontale**

Spaziatura fra le lettere pari a mm 10

FR

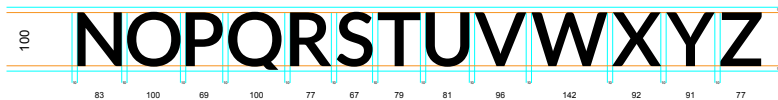
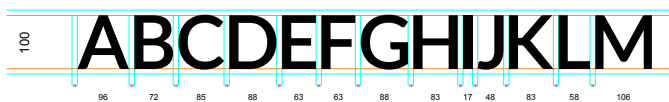
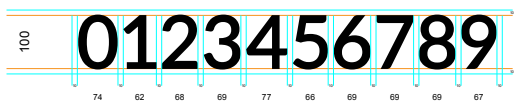
**Orientation horizontale**

Espacement entre les lettres égal à 10 mm

ES

**Orientación horizontal**

Espaciado entre las letras igual a 10 mm



43

readability

Average readability of the text: m 4



EN

**Vertical orientation**

Space between the letters 10 mm except the letter Q which has a space of 7,5 mm at the bottom.

IT

**Orientamento verticale**

Spaziatura fra le lettere è pari a mm 10 ad eccezione della Q che presenta una spaziatura pari a mm 7,5 nella parte inferiore.

FR

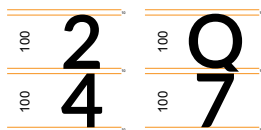
**Orientation verticale**

La distance entre les lettres est de 10 mm sauf pour le Q qui a un espacement en bas de 7,5 mm.

ES

**Orientacion vertical**

La distancia entre las letras es de 10 mm. a excepción de la Q que tiene espaciado inferior 7,5 mm.



# FONT VARSAVIA



H: mm 200

EN WIDTH OF EACH SINGLE LETTER IT LARGHEZZA DI OGNI SINGOLA LETTERA FR LARGEUR DE CHAQUE LETTRE UNIQUE ES ANCHO DE CADA LETRA

EN

## Horizontal orientation

Space between the letters is mm 20

IT

## Orientamento orizzontale

Spaziatura fra le lettere pari a mm 20

FR

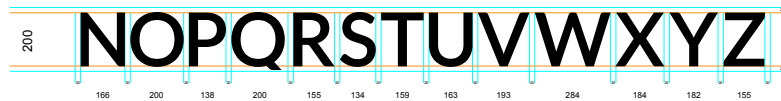
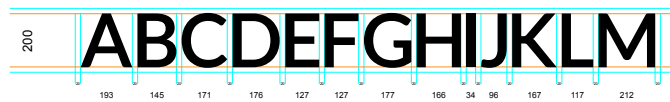
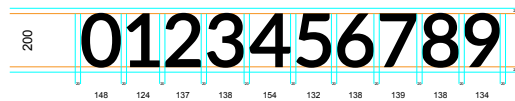
## Orientation horizontale

Espacement entre les lettres égal à 20 mm

ES

## Orientación horizontal

Espaciado entre las letras igual a 20 mm



43

readability

Average readability  
of the text: m 8



EN

## Vertical orientation

Space between the letters 20 mm except the letter Q which has a space of 15 mm at the bottom.

IT

## Orientamento verticale

Spaziatura fra le lettere è pari a mm 20 ad eccezione della Q che presenta una spaziatura pari a mm 15 nella parte inferiore.

FR

## Orientation verticale

La distance entre les lettres est de 20 mm sauf pour le Q qui a un espacement en bas de 15 mm.

ES

## Orientación vertical

La distancia entre las letras es de 20 mm. a excepción de la Q que tiene espaciado inferior 15 mm.



# FONT VARSAVIA

H: mm 300

EN WIDTH OF EACH SINGLE LETTER IT LARGHEZZA DI OGNI SINGOLA LETTERA FR LARGEUR DE CHAQUE LETTRE UNIQUE ES ANCHO DE CADA LETRA

EN

### Horizontal orientation

Space between the letters is mm 30

IT

### Orientamento orizzontale

Spaziatura fra le lettere pari a mm 30

FR

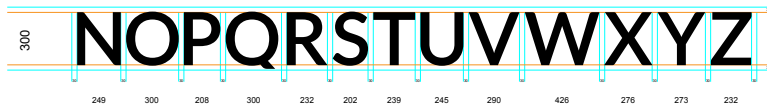
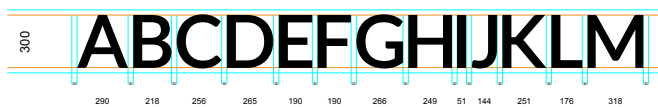
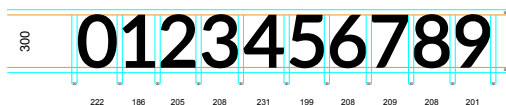
### Orientation horizontale

Espacement entre les lettres égal à 30 mm

ES

### Orientación horizontal

Espaciado entre las letras igual a 30 mm



# 43

readability

Average readability of the text: m 12

EN

### Vertical orientation

Space between the letters 30 mm except the letter Q which has a space of 22,5 mm at the bottom.

IT

### Orientamento verticale

Spaziatura fra le lettere è pari a mm 30 ad eccezione della Q che presenta una spaziatura pari a mm 22,5 nella parte inferiore.

FR

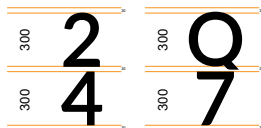
### Orientation verticale

La distance entre les lettres est de 30 mm sauf pour le Q qui a un espacement en bas de 22,5 mm.

ES

### Orientacion vertical

La distancia entre las letras es de 30 mm. a excepción de la Q que tiene espaciado inferior 22,5 mm.





# FONT VARSAVIA

H: mm 400

EN WIDTH OF EACH SINGLE LETTER IT LARGHEZZA DI OGNI SINGOLA LETTERA FR LARGEUR DE CHAQUE LETTRE UNIQUE ES ANCHO DE CADA LETRA

EN

**Horizontal orientation**

Space between the letters is mm 40

IT

**Orientamento orizzontale**

Spaziatura fra le lettere pari a mm 40

FR

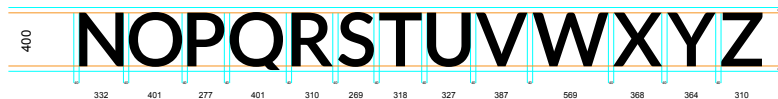
**Orientation horizontale**

Espacement entre les lettres égal à 40 mm

ES

**Orientación horizontal**

Espaciado entre las letras igual a 40 mm



43



readability

Average readability of the text: m 12

EN

**Vertical orientation**

Space between the letters 40 mm except the letter Q which has a space of 30 mm at the bottom.

IT

**Orientamento verticale**

Spaziatura fra le lettere è pari a mm 40 ad eccezione della Q che presenta una spaziatura pari a mm 30 nella parte inferiore.

FR

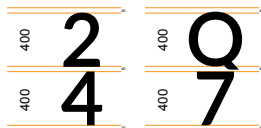
**Orientation verticale**

La distance entre les lettres est de 40 mm sauf pour le Q qui a un espacement en bas de 30 mm.

ES

**Orientacion vertical**

La distancia entre las letras es de 40 mm. a excepción de la Q que tiene espaciado inferior 30 mm.



# FONT VENICE

H: mm 100

EN WIDTH OF EACH SINGLE LETTER IT LARGHEZZA DI OGNI SINGOLA LETTERA FR LARGEUR DE CHAQUE LETTRE UNIQUE ES ANCHO DE CADA LETRA

EN

### Horizontal orientation

Space between the letters is mm 15

IT

### Orientamento orizzontale

Spaziatura fra le lettere pari a mm 15

FR

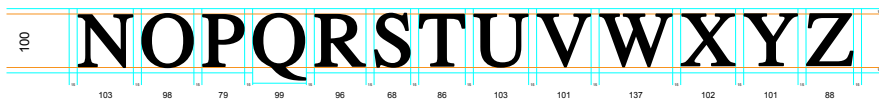
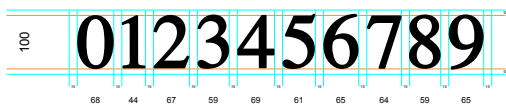
### Orientation horizontale

Espacement entre les lettres égal à 15 mm

ES

### Orientación horizontal

Espaciado entre las letras igual a 15 mm



HO 7

readability

Average readability of the text: m 4



EN

### Vertical orientation

Space between the letters 10 mm except the letter Q which has a space of 7,5 mm at the bottom.

IT

### Orientamento verticale

Spaziatura fra le lettere è pari a mm 10 ad eccezione della Q che presenta una spaziatura pari a mm 7,5 nella parte inferiore.

FR

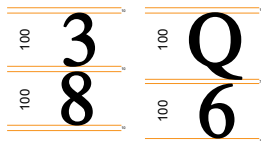
### Orientation verticale

La distance entre les lettres est de 10 mm sauf pour le Q qui a un espacement en bas de 7,5 mm.

ES

### Orientacion vertical

La distancia entre las letras es de 10 mm. a excepción de la Q que tiene espaciado inferior 7,5 mm.



# FONT VENICE

H: mm 200

EN WIDTH OF EACH SINGLE LETTER IT LARGHEZZA DI OGNI SINGOLA LETTERA FR LARGEUR DE CHAQUE LETTRE UNIQUE ES ANCHO DE CADA LETRA

EN

### Horizontal orientation

Space between the letters is mm 30

IT

### Orientamento orizzontale

Spaziatura fra le lettere pari a mm 30

FR

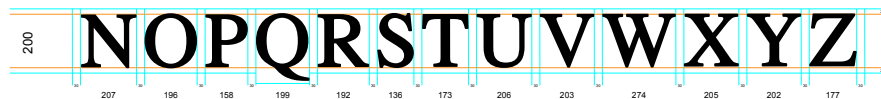
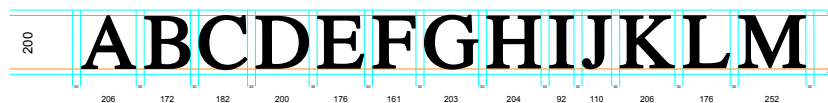
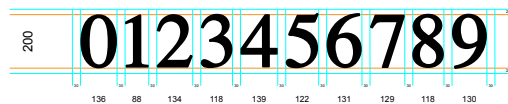
### Orientation horizontale

Espacement entre les lettres égal à 30 mm

ES

### Orientación horizontal

Espaciado entre las letras igual a 30 mm



# HO 7

readability

Average readability of the text: m 8



EN

### Vertical orientation

Space between the letters 20 mm except the letter Q which has a space of 15 mm at the bottom.

IT

### Orientamento verticale

Spaziatura fra le lettere è pari a mm 20 ad eccezione della Q che presenta una spaziatura pari a mm 15 nella parte inferiore.

FR

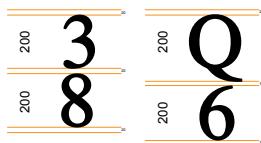
### Orientation verticale

La distance entre les lettres est de 20 mm sauf pour le Q qui a un espacement en bas de 15 mm.

ES

### Orientacion vertical

La distancia entre las letras es de 20 mm. a excepción de la Q que tiene espaciado inferior 15 mm.



# FONT VENICE

H: mm 300

EN WIDTH OF EACH SINGLE LETTER IT LARGHEZZA DI OGNI SINGOLA LETTERA FR LARGEUR DE CHAQUE LETTRE UNIQUE ES ANCHO DE CADA LETRA

EN

### Horizontal orientation

Space between the letters is mm 45

IT

### Orientamento orizzontale

Spaziatura fra le lettere pari a mm 45

FR

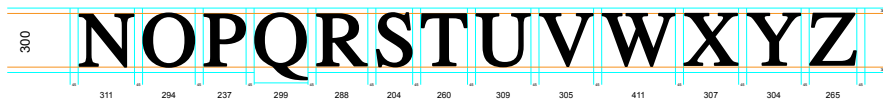
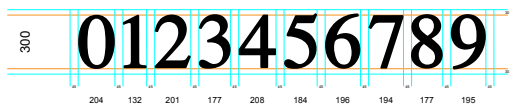
### Orientation horizontale

Espacement entre les lettres égal à 45 mm

ES

### Orientación horizontal

Espaciado entre las letras igual a 45 mm



HO 7

readability

Average readability of the text: m 12



EN

### Vertical orientation

Space between the letters 30 mm except the letter Q which has a space of 22,5 mm at the bottom.

IT

### Orientamento verticale

Spaziatura fra le lettere è pari a mm 30 ad eccezione della Q che presenta una spaziatura pari a mm 22,5 nella parte inferiore.

FR

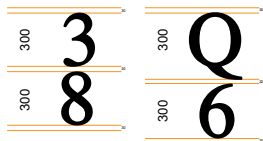
### Orientation verticale

La distance entre les lettres est de 30 mm sauf pour le Q qui a un espacement en bas de 22,5 mm.

ES

### Orientacion vertical

La distancia entre las letras es de 30 mm. a excepción de la Q que tiene espaciado inferior 22,5 mm.



# FONT VENICE

H: mm 400

EN WIDTH OF EACH SINGLE LETTER IT LARGHEZZA DI OGNI SINGOLA LETTERA FR LARGEUR DE CHAQUE LETTRE UNIQUE ES ANCHO DE CADA LETRA

EN

**Horizontal orientation**  
Space between the letters is mm 60

IT

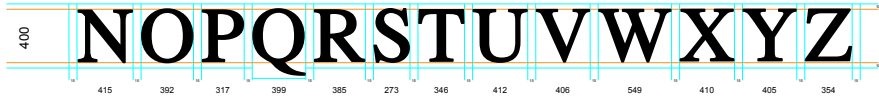
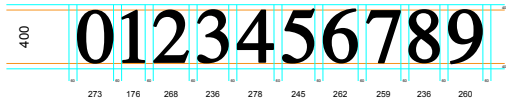
**Orientamento orizzontale**  
Spaziatura fra le lettere pari a mm 60

FR

**Orientation horizontale**  
Espacement entre les lettres égal à 60 mm

ES

**Orientación horizontal**  
Espaciado entre las letras igual a 60 mm



HO 7



readability

Average readability of the text: m 12

EN

**Vertical orientation**  
Space between the letters 40 mm except the letter Q which has a space of 30 mm at the bottom.

IT

**Orientamento verticale**  
Spaziatura fra le lettere è pari a mm 40 ad eccezione della Q che presenta una spaziatura pari a mm 30 nella parte inferiore.

FR

**Orientation verticale**  
La distance entre les lettres est de 40 mm sauf pour le Q qui a un espacement en bas de 30 mm.

ES

**Orientacion vertical**  
La distancia entre las letras es de 40 mm. a excepción de la Q que tiene espaciado inferior 30 mm.

