

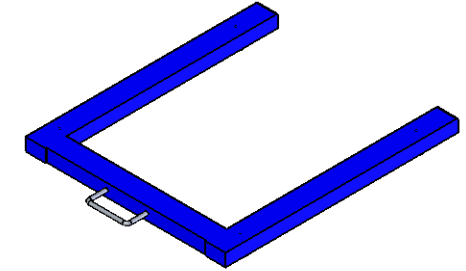
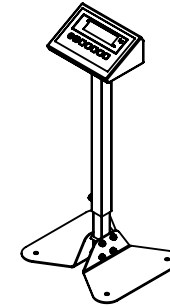
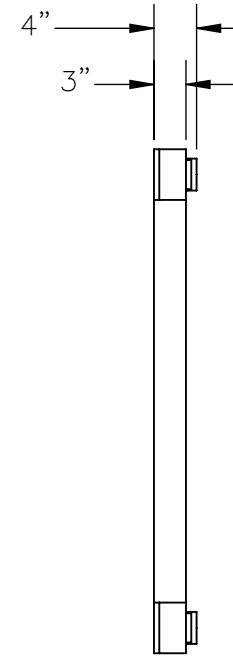
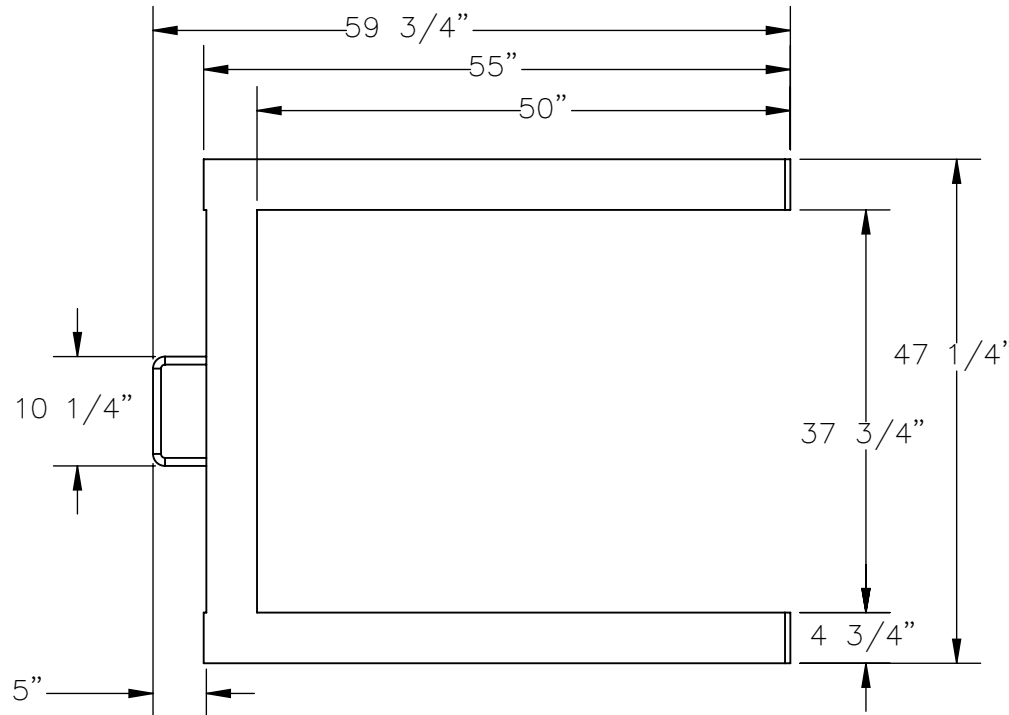
# MODEL NAME - VPU-6

**NOT LEGAL FOR TRADE**

APPROX WEIGHT: 84.98 lbs.  
DOES NOT INCLUDE WEIGHT OF POWER OR PACKAGING!!!

\*\*\* ANY ADDITIONS, DELETIONS, OR OMISSIONS MUST BE CORRECTED ON THIS DRAWING AS THIS DRAWING WILL BE CONSIDERED ALL INCLUSIVE \*\*\*

ALL GRAPHICS PROVIDED ARE FOR REFERENCE ONLY. IF CERTAIN DIMENSIONS ARE CRITICAL PLEASE VERIFY THOSE DIMENSIONS WITH YOUR SALESPERSON



## STANDARD FEATURES:

- MODEL NUMBER IS VPU-6
- OVERALL WIDTH IS 47 1/4 INCHES
- INSIDE WIDTH IS 37 3/4 INCHES
- OVERALL LENGTH IS 59 3/4 INCHES
- USABLE LENGTH IS 55 INCHES
- INSIDE LENGTH IS 50 INCHES
- MAXIMUM HEIGHT IS 4 3/4 INCHES
- MINIMUM HEIGHT IS 4 INCHES
- CAPACITY IS 6000 LBS.
- INDICATOR: XK315A
- 6-DIGIT 0.8" HIGH DISPLAY
- TARE/ZERO/NET IN LBS. OR Kg.
- AUTO POWER OFF FUNCTION
- Kg-LB CONVERSION
- DC POWER WITH 115V CHARGER
- STAND HAS 15 INCHES OF ADJUSTABILITY WITH A MAX. HEIGHT OF 42 INCHES.

**APPROVAL**

I, THE UNDERSIGNED, AGREE THAT THE PRODUCT AS REPRESENTED SATISFIES DESIGN AND DIMENSION REQUIREMENTS. I ALSO ACKNOWLEDGE MY DUTY TO CONFIRM PRODUCT AND INSTALLATION COMPLIANCE WITH ALL APPLICABLE FEDERAL, STATE AND LOCAL REGULATIONS AND STANDARDS.

**ALL SPECIAL UNITS ARE NON-RETURNABLE**

As drawn       As marked

Signed: \_\_\_\_\_ Date: \_\_\_\_\_

**LEAD TIME WILL START UPON RECEIPT OF SIGNED APPROVAL DRAWING**

DISTRIBUTOR'S NAME:		P.O.#
VESTIL MANUFACTURING		X
DRAWN BY: J BRANDT		DATE: 7/7/2011
REFERENCE: X		SCALE: 1:18
QUOTED LEAD TIME: X	QUOTE # X	FILE NAME: 46-007-023