



VESTIL MANUFACTURING CORP.

2999 North Wayne Street, P.O. Box 507, Angola, IN 46703
 Telephone: (260) 665-7586 -or- Toll Free (800) 348-0868
 Fax: (260) 665-1339
www.vestilmfg.com e-mail: sales@vestil.com

**TJIB Series Triple Post Jib Cranes
 Use and Maintenance Manual**



Receiving instructions:

After delivery, IMMEDIATELY remove the packaging from the product in a manner that preserves the packaging and maintains the orientation of the product in the packaging; then inspect the product closely to determine whether it sustained damage during transport. **If damage is discovered during the inspection, immediately record a complete description of the damage on the bill of lading.** If the product is undamaged, discard the packaging.

NOTES:

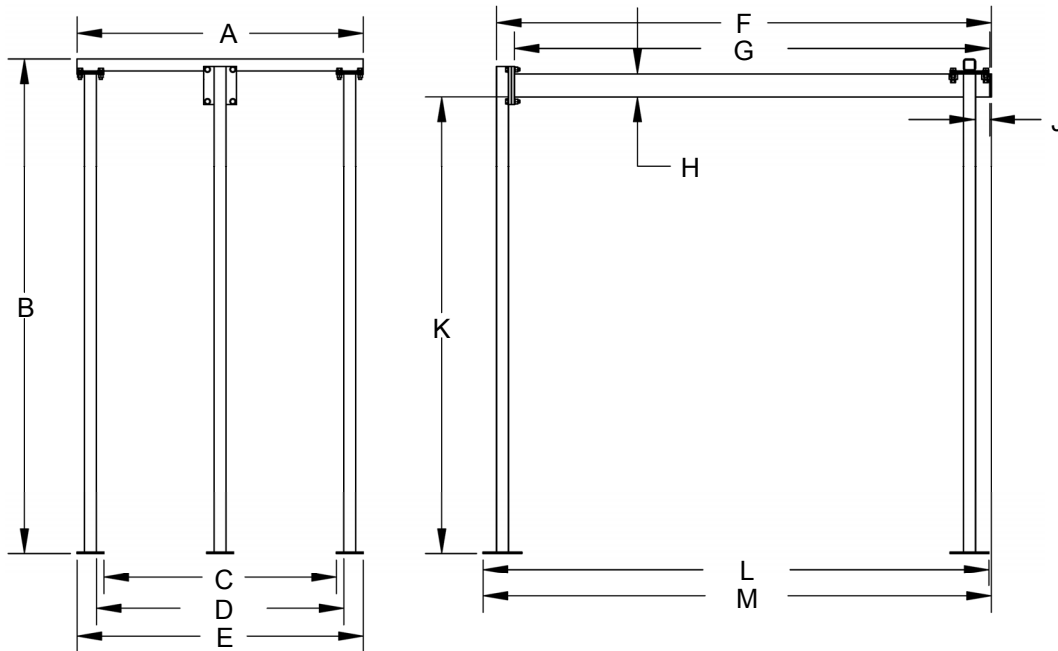
- 1) Compliance with laws, regulations, codes, and non-voluntary standards enforced in the location where the product is used is exclusively the responsibility of the owner/end-user
- 2) VESTIL is **not liable** for any injury or property damage that occurs as a consequence of failing to apply either:
 - a) Instructions in this manual; or b) information provided on labels affixed to the product. Neither is Vestil responsible for any consequential damages sustained as a result of failing to exercise sound judgment while assembling, installing, using or maintaining this product.

Table of Contents

Product Specifications.....	2
Signal Words.....	2
Safe Use Recommendations.....	3
FIG. 1: TJIB exploded parts diagram & bill of materials.....	4
Assembly Instructions.....	5-6
Use Instructions.....	6
Inspections & Maintenance.....	6-7
Label Placement Diagram.....	7
Limited Warranty.....	8

Product specifications:

Dimensions and other product specifications appear in the diagrams and table below.







Model	A	B	C	D	E	F	G	H	J	K	L	M
TJIB-3	48"	83"	39"	41 ¹ / ₂ "	48"	83"	79 ³ / ₄ "	4"	3" - 36"	76 ¹ / ₂ "	84 ⁷ / ₈ "	85 ¹ / ₄ "
TJIB-6	48"	83"	39"	41 ¹ / ₂ "	48"	83"	79 ³ / ₄ "	4"	3" - 36"	76 ¹ / ₂ "	84 ⁷ / ₈ "	85 ¹ / ₄ "

Model	Capacity	Net Weight
TJIB-3	300 lb. (136.4 kg)	187.4 lb. (85.2 kg)
TJIB-6	600 lb. (272.7 kg)	187.4 lb. (85.2 kg)

SIGNAL WORDS:

This manual uses SIGNAL WORDS to indicate the likelihood of personal injuries, as well as the probable seriousness of those injuries, if the product is misused in the ways described. Other signal words call attention to uses of the product likely cause property damage. The signal words used appear below along with the meaning of each word:

-  **DANGER** Identifies a hazardous situation which, if not avoided, WILL result in DEATH or SERIOUS INJURY. Use of this signal word is limited to the most extreme situations.
-  **WARNING** Identifies a hazardous situation which, if not avoided, COULD result in DEATH or SERIOUS INJURY.
-  **CAUTION** Indicates a hazardous situation which, if not avoided, COULD result in MINOR or MODERATE injury.
-  **NOTICE** Identifies practices likely to result in product/property damage, such as operation that might damage the product.

Each person who assembles, installs, uses, or maintains this product should read the entire manual in advance and fully understand the directions. If after reading the manual you do not understand an instruction, ask your supervisor or employer for clarification, because failure to adhere to the directions in this manual might result in serious personal injury.

Safe Use Recommendations:

We strive to identify foreseeable hazards associated with the use of our products. However, material handling is dangerous and no manual can address every risk. The end-user ultimately is responsible for exercising sound judgment at all times.

⚠ WARNING

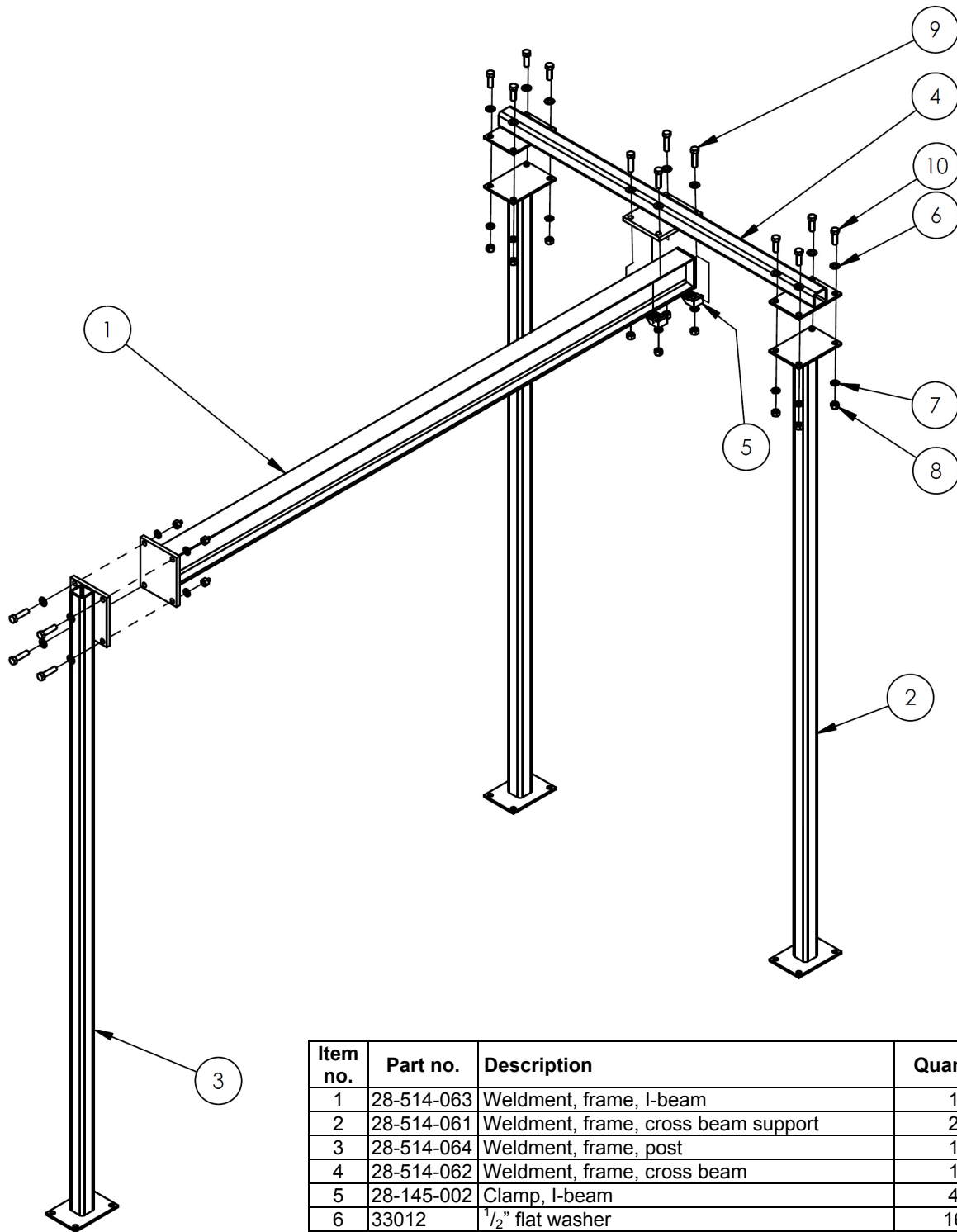
Improper or careless operation might result in serious personal injuries sustained by the operator and bystanders. Always apply material handling techniques learned during training and use the product properly.

- ***Failure to read and understand the entire manual before assembling, using or servicing the product constitutes misuse.*** Read the manual to refresh your understanding of proper use and maintenance procedures as necessary.
- DO NOT use the crane unless it is in normal operating condition. Inspect the unit as described in the inspection instructions on p. 6-7 to determine whether it is functioning normally. DO NOT use the crane unless it passes every part of the inspection or until it is restored to normal operating condition.
- DO NOT attempt to lift a load that weighs more than the capacity of your unit. The capacity appears on label 287 as shown in “Labeling diagram” on p. 7. (Also see product specifications on p. 2.)
- Always watch the load carefully while raising and lowering it.
- DO NOT pull a suspended load to move it. Always push the load. Make sure that the load is centered beneath the hoist/trolley before letting go of the load/rigging.
- Always lower the load until it is fully supported by a surface (ground, work table, etc.) before leaving the load unattended.
- DO NOT stand between a suspended load and another object like, for instance, a work table or wall.
- DO NOT climb on the crane or the load.
- This crane is designed for material handling ONLY. DO NOT use the crane to lift people.
- ALWAYS load the crane properly (see “Use instructions” on p. 6). Failure to properly engage the load might result in serious injury to the operator or bystanders.
- DO NOT perform maintenance on this crane UNLESS it is unloaded. If repairs are necessary, ONLY install manufacturer-approved replacement parts.
- DO NOT use the crane UNLESS all labels are in place and readable (see “Labeling diagram” on p. 7.)
- DO NOT modify this product in any way. Modifying the crane automatically voids the limited warranty and might make it unsafe to use.

NOTICE

- Proper use and maintenance are essential for this product to function properly.
- Always use this product in accordance with the instructions in this manual and consistent with any training relevant to rigging used in conjunction with this product.
 - Keep the product clean & dry.
 - Only use approved replacement parts. To order replacement or spare parts for this equipment, contact the factory.

FIG. 1: TJIB Exploded Parts Diagram & Bill of Materials



Item no.	Part no.	Description	Quantity
1	28-514-063	Weldment, frame, I-beam	1
2	28-514-061	Weldment, frame, cross beam support	2
3	28-514-064	Weldment, frame, post	1
4	28-514-062	Weldment, frame, cross beam	1
5	28-145-002	Clamp, I-beam	4
6	33012	1/2" flat washer	16
7	33626	1/2" zinc-plated lock washer	16
8	36310	1/2" - 13 UNC z-plated, grade 5 hex nut	16
9	13211	1/2" - 13 x 2" HHCS #5 z-plated bolt	8
10	13209	1/2" - 13 x 1 1/2" HHCS #5 z-plated bolt	8

Assembly instructions:

In the assembly instructions below, numbers in parentheses correspond to item numbers in the exploded parts diagram on p. 4.

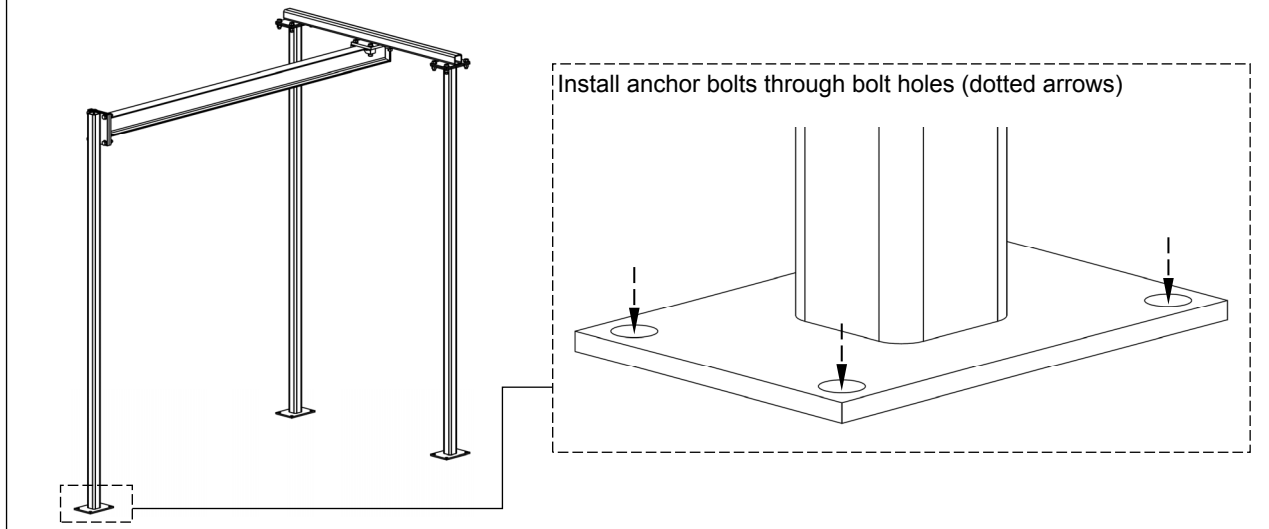
Step 1: Lay the cross beam supports (2) with the beam brackets on the same end. Then, fasten together the mounting brackets of the cross beam supports and the cross beam (4) with 1/2" hardware (6), (7), (8), & (10) as shown below. Tighten each connection to 50-52ft-lb. with a torque wrench.

Step 2: Lay the post and the I-beam on the ground with the mounting brackets facing each other. Fasten the mounting brackets of the post (3) and the I-beam (1) together using 1/2" - 13 x 2" bolts (9), 1/2" flat washers (6), 1/2" lock washers (7), and 1/2" - 13 hex nuts (8). Tighten each connection to 50-52ft-lb. with a torque wrench.

Step 3: Install 1/2" anchor bolts of appropriate length (as determined by your building engineer) through the bolt holes in the base brackets to anchor the beam supports to the ground at the desired location.

Step 4: Clamp the I-beam to the mounting bracket at the center of the cross beam using beam clamps (5), 1/2" - 13 x 2" bolts (9), 1/2" flat washers (6), and 1/2" - 13 hex nuts (8) as shown in the diagram below. Tighten each connection to 50-52ft-lb. with a torque wrench.

Step 5: Anchor the post to the ground using $\frac{1}{2}$ " anchor bolts of appropriate length as determined by your building engineer.



Use Instructions:

Attach a hoist or hoist-and-trolley combination to the lower flange of the I-beam. Be sure to include the weight of the hoist, etc. in the calculation of the total load weight applied to the crane. The total load weight must not exceed the capacity of your crane.

Proper loading is essential to reduce the likelihood of personal injury. Bring the load to the crane and center it beneath the hoist, i.e. directly below the load hook. Centering the load under the load hook is necessary to prevent the load from swinging as it is lifted off of the ground. Attach rigging to the load, as necessary; then attach the load hook to the rigging. Elevate the load only as much as necessary to place it upon the work surface. Then, lower the load until it is completely, immovably, and stably supported by the work surface.

Inspections and Maintenance

Crane owners and operators should regularly inspect this crane to confirm that it is in normal working condition. Occupational Safety and Health Administration (OSHA) crane inspection procedures appear in 29 CFR 1910.179 (visit <http://www.osha.gov/> and navigate to "Regulations" section 1910.179; relevant portions of those procedures appear in paraphrase below).

1. **Initial inspection** — before using a new crane for the first time, inspect it to insure normal condition.

After the first use, conduct the following inspections:

2. **Frequent inspection** — inspect the following items for defects at the intervals indicated, including observation *during operation* for any defects which might appear between inspections. All deficiencies such as those listed shall be carefully examined to determine whether they constitute a safety hazard:
 - **[Inspect daily]** All functional operating mechanisms (post, brace supports, cross brace, and I-beam) for maladjustment interfering with proper operation.
 - **[Inspect daily (visually); inspect monthly and make a certification record, which includes the date of inspection, the signature of the person who performed the inspection and the serial number (or other identifier) of the hook inspected]** Hooks with deformation or cracks. Immediately discard hooks with cracks or that have a throat opening that is more than 15 percent in excess of normal throat opening, or that are twisted more than 10° from the plane of the unbent hook.
 - **[Inspect daily (visually); monthly inspection with a certification record which includes the date of inspection, the signature of the person who performed the inspection and an identifier of the chain which was inspected]** Hoist chains, including end connections, for excessive wear, twist, distorted links interfering with proper function, or stretch beyond hoist manufacturer's recommendations.
 - **[Inspect weekly]** All functional operating mechanisms (post, brace supports, cross brace, I-beam, bolts and nuts, including anchor bolts and nuts, and beam clamps) for excessive wear.
 - **[Inspect weekly]** Rope reeving for noncompliance with hoist manufacturer's recommendations.
3. **Periodic inspection** [29 CFR 1910.179(j)(1)(ii)(b)] — 1 to 12-month intervals.

Complete inspections of the crane shall be performed at intervals depending upon its activity, severity of service, and environment, or as specifically indicated below. Perform all of the requirements described for frequent inspections and the following bulleted items. Carefully examine the crane for any problems such as those listed below to determine whether they constitute a safety hazard:

- Deformed, cracked, or corroded members.

- Loose bolts or rivets.
- Cracked or worn sheaves and drums.
- Worn, cracked or distorted parts such as pins, bearings, shafts, gears, rollers, locking and clamping devices.
- Excessive wear on brake system parts, linings, pawls, and ratchets.
- Load, wind, and other indicators over their full range, for any significant inaccuracies.
- Gasoline, diesel, electric, or other power plants for improper performance or noncompliance with applicable safety requirements.
- Excessive wear of chain drive sprockets and excessive chain stretch.
- Electrical apparatus, for signs of pitting or any deterioration of controller contactors, limit switches and pushbutton stations.

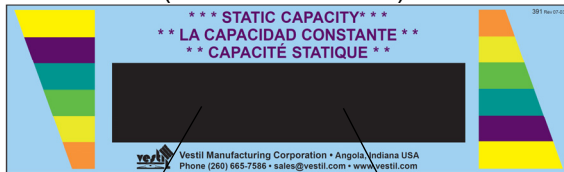
Cranes not in regular use:

- A crane which has been idle for a period of 1 month or more, but less than 6 months, shall undergo a "Frequent inspection" before being returned to service.
- A crane which has been idle for a period of over 6 months shall be given a "Complete inspection" before placing in service.
- Standby cranes shall be given a "Frequent inspection" at least semi-annually (twice per year; 1 inspection each 6 months).

Label placement diagram:

The crane should be labeled at all times as shown in the diagram below. Periodically inspect and clean the labels to maintain legibility from a reasonable, safe viewing distance. Replace any label that is damaged or not easily readable.

A: Label 391 (both sides of boom)



Label 562: 300 lb. capacity



Label 561: 600 lb. capacity



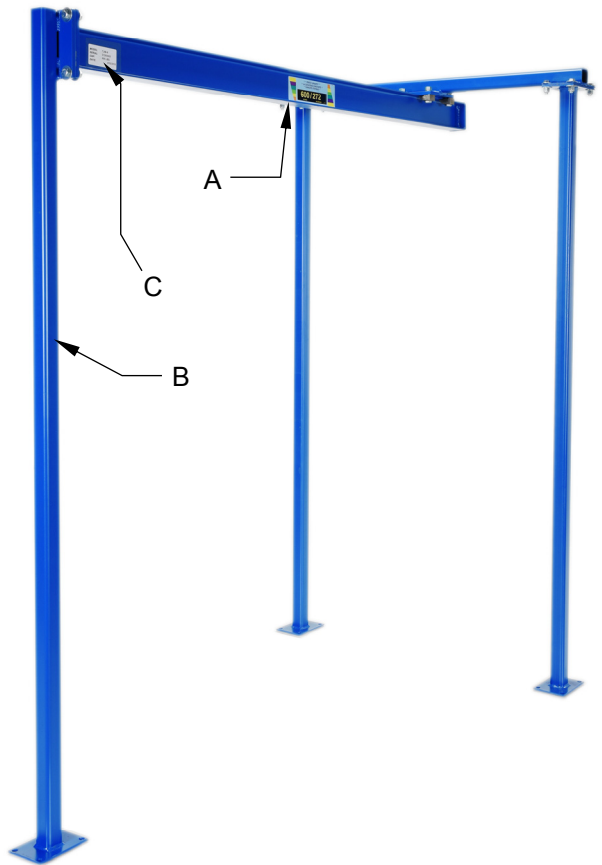
B: Label 586

▲ WARNING	▲ ADVERTENCIA	▲ AVERTISSEMENT
<ul style="list-style-type: none"> • DO NOT exceed rated capacity • LOWER LOAD before moving to avoid load swing • NEVER STAND under, beside or in front of load • USE on hard level surface • INSPECT connections before using • READ manual before use 	<ul style="list-style-type: none"> • No exceda la capacidad tasada • Descienda la carga antes de mover para evitar que la carga se balancee • Nunca se sitúe debajo, al lado o delante de la carga • Use en una superficie a nivel dura • Inspeccione las conexiones antes del uso • Lea el manual antes del uso 	<ul style="list-style-type: none"> • NE PAS DÉPASSER la capacité nominale • DESCENDRE la charge avant de la transporter pour éviter la giration • JAMAIS vous mettre sous, à côté de ou devant une charge • UTILISER sur un sol plat et dur • INSPECTER les connexions avant utilisation • LIRE le guide avant utilisation

VESTIL MANUFACTURING CORPORATION • Argola, IN USA • Ph. (260) 665-7586 • Fax (260) 665-1339 • www.vestil.com 586

C: Label 287 (model, capacity, serial no.)

MODEL/MODELO/MODELE	_____
CAPACITY	_____ lbs.
CAPACIDAD/CAPACITÉ	_____ kgs.
SERIAL/SERIE/SERIE	_____
VESTIL MANUFACTURING CORPORATION	
sales@vestil.com • www.vestil.com	287 rev 03/08



LIMITED WARRANTY

Vestil Manufacturing Corporation (“Vestil”) warrants this product to be free of defects in material and workmanship during the warranty period. *Our warranty obligation is to provide a replacement for a defective original part if the part is covered by the warranty, after we receive a proper request from the warrantee (you) for warranty service.*

Who may request service?

Only a warrantee may request service. *You are a warrantee if* you purchased the product from Vestil or from an authorized distributor AND Vestil has been fully paid.

What is an “original part”?

An original part is a part used to make the product as shipped to the warrantee.

What is a “proper request”?

A request for warranty service is proper if Vestil receives: 1) a photocopy of the Customer Invoice that displays the shipping date; AND 2) a written request for warranty service including your name and phone number. Send requests by any of the following methods:

<u>Mail</u>	<u>Fax</u>	<u>Email</u>
Vestil Manufacturing Corporation 2999 North Wayne Street, PO Box 507 Angola, IN 46703	(260) 665-1339 <u>Phone</u> (260) 665-7586	sales@vestil.com

In the written request, list the parts believed to be defective and include the address where replacements should be delivered.

What is covered under the warranty?

After Vestil receives your request for warranty service, an authorized representative will contact you to determine whether your claim is covered by the warranty. Before providing warranty service, Vestil may require you to send the entire product, or just the defective part or parts, to its facility in Angola, IN. The warranty covers defects in the following original dynamic components: motors, hydraulic pumps, electronic controllers, switches and cylinders. It also covers defects in original parts that wear under normal usage conditions (“wearing parts”), such as bearings, hoses, wheels, seals, brushes, and batteries.

How long is the warranty period?

The warranty period for original dynamic components is 90 days. For wearing parts, the warranty period is 90 days. The warranty periods begin on the date when Vestil ships the product to the warrantee. If the product was purchased from an authorized distributor, the periods begin when the distributor ships the product. Vestil may, at its sole discretion, extend the warranty periods for products shipped from authorized distributors by *up to* 30 days to account for shipping time.

If a defective part is covered by the warranty, what will Vestil do to correct the problem?

Vestil will provide an appropriate replacement for any *covered* part. An authorized representative of Vestil will contact you to discuss your claim.

What is not covered by the warranty?

1. Labor;
2. Freight;
3. Occurrence of any of the following, which automatically voids the warranty:
 - Product misuse;
 - Negligent operation or repair;
 - Corrosion or use in corrosive conditions;
 - Inadequate or improper maintenance;
 - Damage sustained during shipping;
 - Accidents involving the product;
 - Unauthorized modifications: DO NOT modify the product IN ANY WAY without first receiving written authorization from Vestil. Modification(s) might make the product unsafe to use or might cause excessive and/or abnormal wear.

Do any other warranties apply to the product?

Vestil Manufacturing Corp. makes no other express warranties. All implied warranties are disclaimed to the extent allowed by law. Any implied warranty not disclaimed is limited in scope to

