

ELECTRIC HYDRAULIC TRASH CAN DUMPER - TCD-M-72-DC

APPROX WEIGHT: 699.08 lbs.
 DOES NOT INCLUDE WEIGHT OF POWER OR PACKAGING!!!

*** ANY ADDITIONS, DELETIONS, OR OMISSIONS MUST BE CORRECTED ON THIS DRAWING AS THIS DRAWING WILL BE CONSIDERED ALL INCLUSIVE ***

ALL GRAPHICS PROVIDED ARE FOR REFERENCE ONLY. IF CERTAIN DIMENSIONS ARE CRITICAL PLEASE VERIFY THOSE DIMENSIONS WITH YOUR SALESPERSON

STANDARD FEATURES

MODEL NUMBER: TCD-M-72-DC
 USABLE CHUTE WIDTH: 20" MIN TO 27" MAX
 USAGE CHUTE LENGTH: 27 1/8"

OVERALL LENGTH: 87 5/8"
 OVERALL WIDTH: 46 1/16"
 OVERALL HEIGHT: 89 9/16"

OVERALL ROTATED HEIGHT: 155 7/16"
 MAXIMUM ROTATED ANGLE: 45°
 DUMP HEIGHT: 72 1/2"

WORKS WITH MODEL# TH-32/64/95

UNIFORM CAPACITY IS 400 LBS

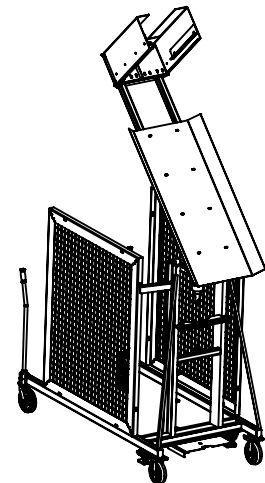
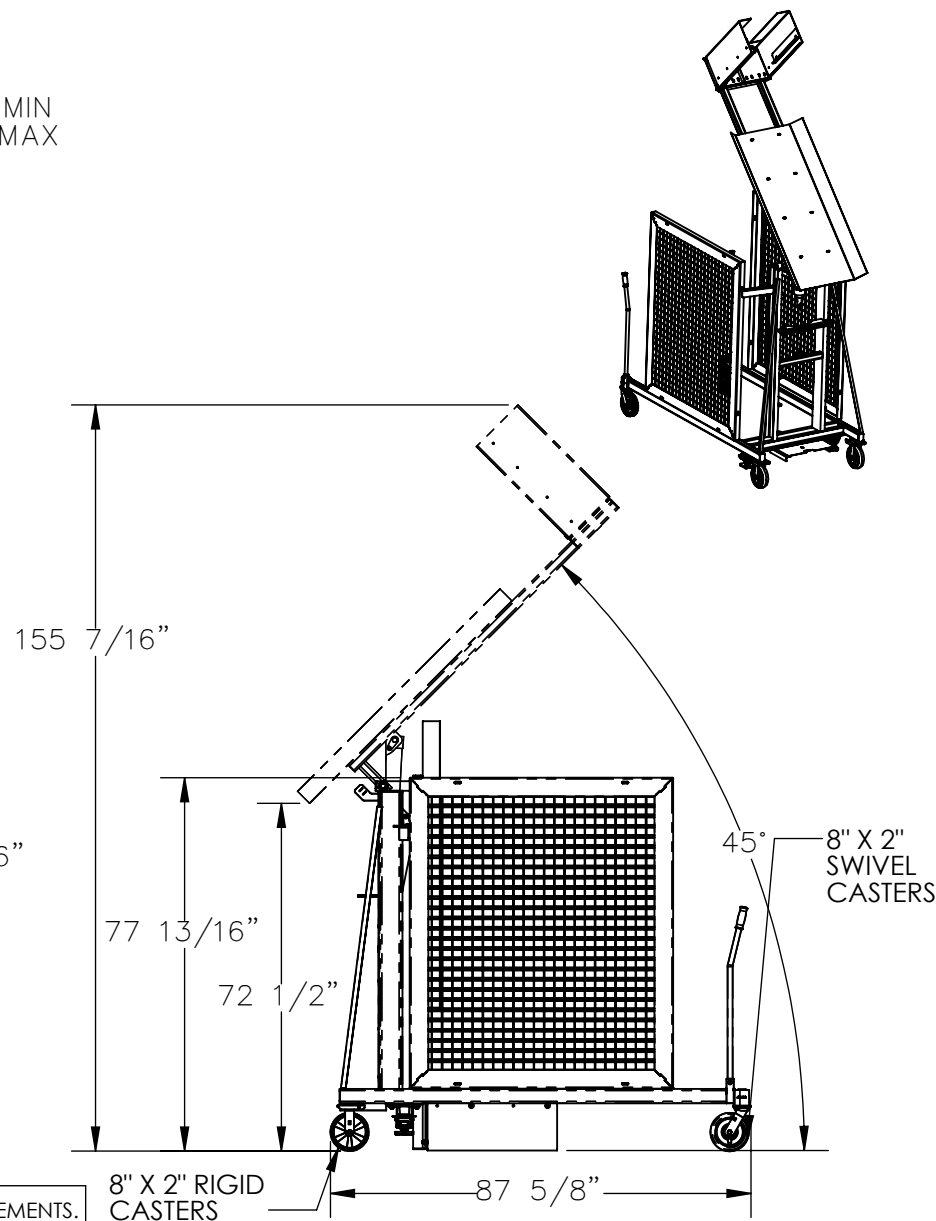
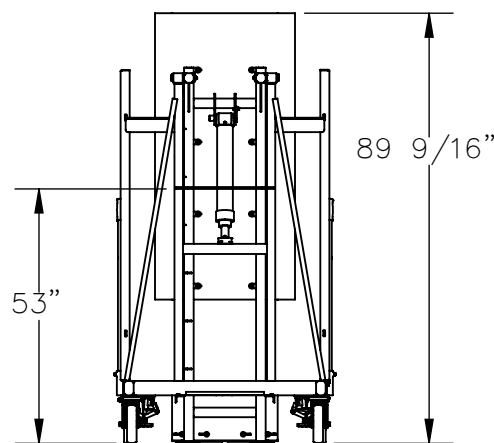
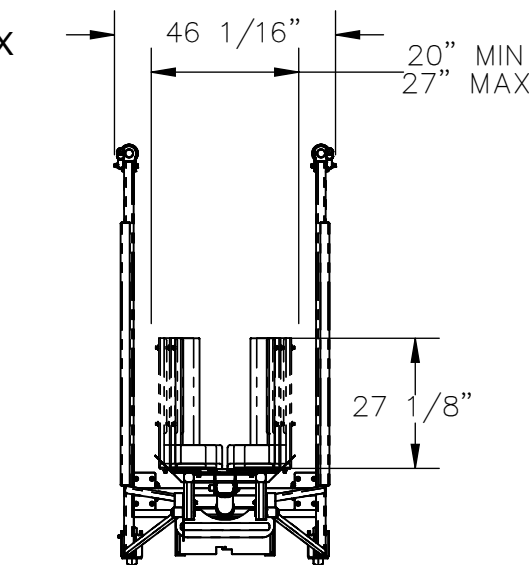
CASTERS:
 FRONT: 8" X 2" GFN SWIVEL
 REAR: 8" X 2" GFN RIGID
 TWO ADJUSTABLE FLOOR LOCKS
 INTERNAL POWER UNIT: 12 V DC WITH
 ON-BOARD CHARGER
 CONTROL IS HANDHELD, 2 BUTTON,
 NEMA 4 PENDANT WITH MINIMUM 8'
 USABLE COIL CORD

FRAME: DURABLE LIQUID PAINT BLUE FINISH
 CHUTE: DURABLE LIQUID PAINT YELLOW FINISH

SPECIAL FEATURES

NONE

DIMENSION TOLERANCE ± 1/4"



I, THE UNDERSIGNED, AGREE THAT THE PRODUCT AS REPRESENTED SATISFIES DESIGN AND DIMENSION REQUIREMENTS.
 I ALSO ACKNOWLEDGE MY DUTY TO CONFIRM PRODUCT AND INSTALLATION COMPLIANCE WITH ALL APPLICABLE
 FEDERAL, STATE AND LOCAL REGULATIONS AND STANDARDS.

UNITS REQUIRING APPROVAL DRAWINGS OR MODIFIED ARE NON-RETURNABLE

As drawn As marked

Signed: _____ Date: _____

Printed Name: _____

LEAD TIME WILL START UPON RECEIPT OF SIGNED APPROVAL DRAWING

DISTRIBUTOR'S NAME: VESTIL MANUFACTURING		P.O.# X
DRAWN BY: SJA		DATE: 7/28/2016
REFERENCE: X		SCALE: 1:40
QUOTED LEAD TIME: X		QUOTE # X
		SALES: X
		FILE NAME: 34-007-031

APPROVAL