



Vestil Manufacturing Corp.
 2999 North Wayne Street, P.O. Box 507, Angola, IN 46703
 Telephone: (260) 665-7586 -or- Toll Free (800) 348-0868
 Fax: (260) 665-1339
 Web: www.vestilmfg.com e-mail: info@vestil.com

STRAP-WALL Instruction Manual



Receiving Instructions

After delivery, remove the packaging from the product. Inspect the product closely to determine whether it sustained damage during transport. If damage is discovered, record a complete description of it on the bill of lading. If the product is undamaged, discard the packaging.

NOTE: The end-user is solely responsible for confirming that product design, use, and maintenance comply with laws, regulations, codes, and mandatory standards applied where the product is used.

Technical Service & Replacement Parts

For answers to questions not addressed in these instructions and to order replacement parts, labels, and accessories, call our Technical Service and Parts Department at (260) 665-7586. The Department can also be contacted online at <https://www.vestil.com/page-parts-request.php>.

Electronic Copies of Instruction Manuals

Additional copies of this instruction manual may be downloaded from <https://www.vestil.com/page-manuals.php>.

Table of Contents

	Page
Signal Words.....	2
Safety Instructions.....	2
Specifications.....	3
Anchoring the Unit to a Wall.....	3
Exploded View & Bill of Materials.....	4
Loading Strap Material.....	5
Dispensing Strap Material.....	5
Record of Satisfactory Condition.....	5
Inspections & Maintenance.....	6
Labeling Diagram.....	6
Limited Warranty.....	7

SIGNAL WORDS

This manual uses SIGNAL WORDS to indicate the likelihood that a particular action will cause personal injuries or property damage. Signal words also specify the level of seriousness of injury if the product is misused in the ways described. The following signal words are used in this manual.



Identifies a hazardous situation which, if not avoided, **WILL** result in DEATH or SERIOUS INJURY. Use of this signal word is limited to the most extreme situations.



Identifies a hazardous situation which, if not avoided, **COULD** result in DEATH or SERIOUS INJURY.



Indicates a hazardous situation which, if not avoided, **COULD** result in MINOR or MODERATE injury.



Identifies practices likely to result in product/property damage, such as operation that might damage the product.

SAFETY INSTRUCTIONS

Vestil strives to identify all hazards associated with the use of our products. However, material handling is dangerous and no manual can address every risk. The most effective way to avoid injury is for the end-user to exercise sound judgment whenever using this product.

WARNING

Risks of serious personal injuries or death.

- **Read and understand the entire manual before assembling, installing, using or servicing the product.** Read the manual to refresh your understanding of proper use and maintenance procedures whenever necessary. Properly maintain the device following to the instructions on [p. 6](#).
- DO NOT remove, alter, or obscure any label. If a label is missing, damaged, or unreadable, contact the [TECHNICAL SERVICE AND PARTS DEPARTMENT](#) to order a replacement. DO NOT use the unit until all replacement labels are applied. DO NOT remove or obscure any label.
- DO NOT climb, or allow others to climb, on the unit.
- DO NOT set items on top of the unit or apply loads other than properly sized spools of strapping material to it. Do not sit on the spool holding mechanism, i.e. retaining discs. Only use this device to hold and dispense strapping material.
- Install the unit in a dry location that is protected from weather.
- Do not modify this product without express, written consent from Vestil. Unauthorized modifications automatically void the [LIMITED WARRANTY](#) (see p. 7) and might make the product unsafe to use.
- DO NOT exceed the capacity/maximum rated load. See Label 1153 on product; also see [LABELING DIAGRAM](#) on p. 6.
- DO inspect the product according to the instructions in [INSPECTIONS & MAINTENANCE](#) on p. 6. DO NOT use the product unless it is in [SATISFACTORY CONDITION](#).
- DO NOT modify the product without written approval from Vestil. **Unapproved modifications automatically void the [LIMITED WARRANTY](#) (p. 8) and might make the product unsafe to use.**

SPECIFICATIONS (45-007-010)

Specifications for STRAP-WALL series strap dispensers are provided on Vestil's website. To access the appropriate specifications document, navigate to this webpage: <https://www.vestil.com/product.php?FID=410>. Click the "Specifications" tab. Scroll the page to the entry for the model you purchased, and click the button in the PDF column that looks like a pencil inside a blue box. A PDF file will open. This file is the specifications document. Print a copy of the document and keep it with your copy of this manual. The following is an exemplar specifications document.

WALL-MOUNTED STRAPPING DISPENSER - STRAP-WALL

*** ANY ADDITIONS, DELETIONS, OR OMISSIONS MUST BE CORRECTED ON THIS DRAWING AS THIS DRAWING WILL BE CONSIDERED ALL INCLUSIVE ***
ALL GRAPHICS PROVIDED ARE FOR REFERENCE ONLY. IF CERTAIN DIMENSIONS ARE CRITICAL PLEASE VERIFY THOSE DIMENSIONS WITH YOUR SALESPERSON

APPROX WEIGHT: 67.81 lbs.
DOES NOT INCLUDE WEIGHT OF POWER OR PACKAGING!!!

ADAPTOR FOR 1/2" POLY STRAPPING

Ø 25"

Ø 1/2" THRU

HINGES TO SWING OPEN FROM WALL

DIMENSION TOLERANCE ± 1/4"

APPROVAL

I, THE UNDERSIGNED, AGREE THAT THE PRODUCT AS REPRESENTED SATISFIES DESIGN AND DIMENSION REQUIREMENTS. I ALSO ACKNOWLEDGE MY DUTY TO CONFIRM PRODUCT AND INSTALLATION COMPLIANCE WITH ALL APPLICABLE FEDERAL, STATE AND LOCAL REGULATIONS AND STANDARDS.

ANY MODIFIED UNITS ARE NON-RETURNABLE

[] As drawn [] As marked

Signed: _____ Date: _____

Printed Name: _____

LEAD TIME WILL START UPON RECEIPT OF SIGNED APPROVAL DRAWING

FOR INTERNAL USE ONLY
PROJECT SIGN OFF

SALES	
ENG.	
FAB.	
POWER	

DISTRIBUTOR'S NAME:
VESTIL MANUFACTURING

DRAWN BY: _____ DATE: _____

REFERENCE: X SCALE: 1:8

QUOTED LEAD TIME: X QUOTE # X

P.O.#	X
W.O.#	X
SALES:	X
FILE NAME:	45-007-010

STANDARD FEATURES

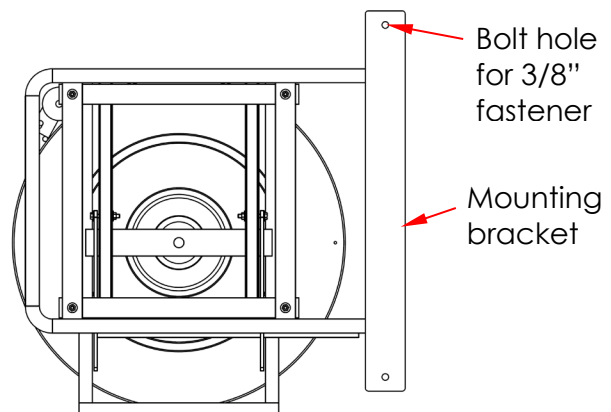
MODEL NUMBER IS STRAP-WALL
OVERALL WIDTH IS 14 7/8"
OVERALL LENGTH IS 29 1/2"
OVERALL HEIGHT 30 3/8"
ATTACHES TO WALL
SWINGS AWAY FROM WALL FOR CONVENIENCE OF LOCATION
UNIQUE DESIGN ACCEPTS 8" x 8", 16" x 3", AND 16" x 6" CORES

SPECIAL FEATURES

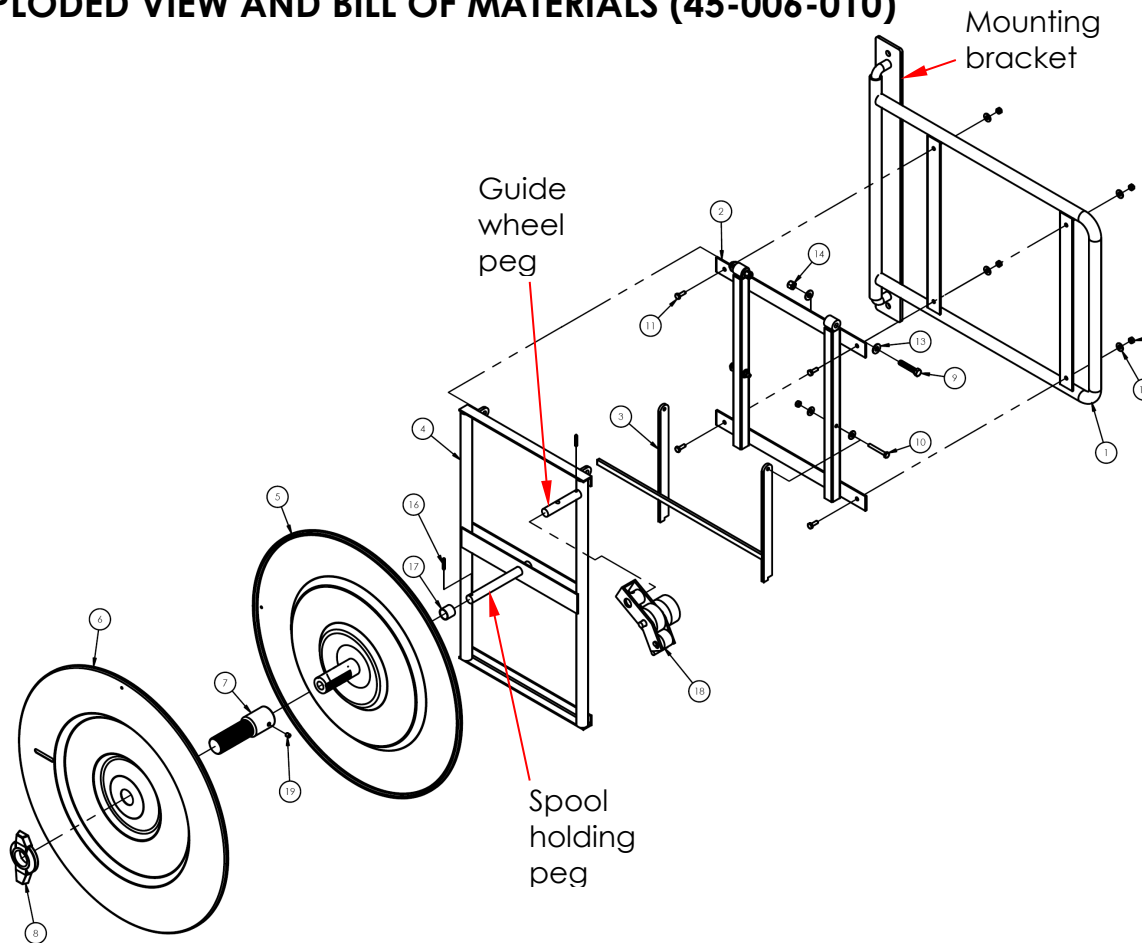
NONE

ANCHORING THE UNIT TO A WALL

The mounting bracket includes 2 bolt holes. The diameter of these bolt holes is 1/2" which will accept 3/8" anchoring fasteners. Determine where to install the unit and attach it to the wall with the selected fasteners.



EXPLODED VIEW AND BILL OF MATERIALS (45-006-010)



Item	Part no.	Description	Qty.
1	45-514-016	WELDMENT, FRAME (WALL FRAME)	1
2	45-514-018	WELDMENT, FRAME (INTERMEDIATE FRAME)	1
3	45-514-017	WELDMENT, SUPPORT STAND	1
4	45-514-015	WELDMENT, FRAME (SPOOL FRAME)	1
*5	45-014-013	FRAME, WHEEL, INNER BANDING	1
*6	45-014-014	FRAME, WHEEL, OUTER BANDING	1
*7	45-112-005	PIN, STRAPPING CART	1
*8	45-145-003	NUT, BANDING WHEEL WINGED	1
9	11111	HEX BOLT, GRADE A, ZINC PLATED, 3/8" - 16 x 2"	2
10	11011	HEX BOLT, GRADE A, ZINC PLATED, 1/4"-20 X 2"	2
11	11003	HEX BOLT, GRADE A, ZINC PLATED, 1/4-20 X 3/4"	4
12	33004	FLAT WASHER, USS, ZINC PLATED, Ø1/4"	8
13	33006	FLAT WASHER, ZINC PLATED, USS, Ø5/16"	4
14	37024	NYLON INSERT LOCK NUT, GRADE 2, ZINC FINISH, 3/8"-16	2
15	37018	NYLON LOCK NUT, GRADE 2, ZINC FINISH, 1/4"-20	6
*16	64104	PIN, SPRING PIN, Ø5/32 x 1 1/8 LG.	2
*17	45-113-006	SPACER, BUSHING	1
18	45-645-003	SPECIALITY HARDWARE ASSEMBLY, GUIDE WHEEL	1
*19	25437	5 /16-18 UNC x 3/8 LG SSS CP	1

* Components of spool holding assembly

LOADING STRAP MATERIAL

The retaining discs are multi-tiered to accept 16" x 3", 16" x 6", or 8" x 8" spools of either steel or polyester strapping material. The following steps describe how to load a spool into the spool holding mechanism.

Step 1: Inspect the unit according to the instructions on p.5.

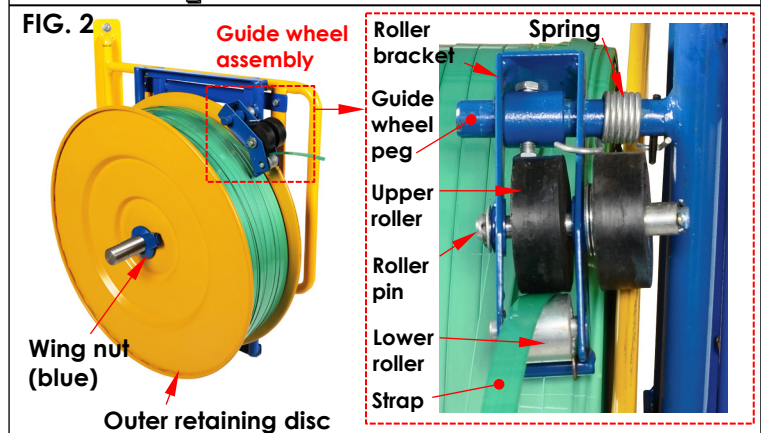
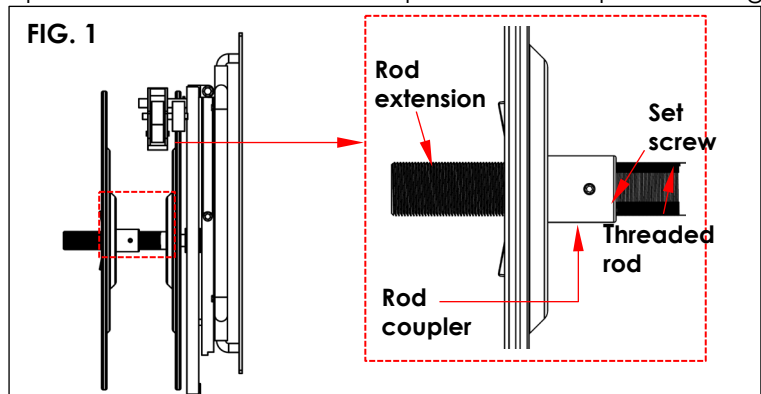
Step 2: Unwind the wing nut and remove the outer retaining disc.

Step 3: Install a selected spool of strapping material. Orient the spool with the strapping wound counterclockwise around the spool. Center the core of the spool on the threaded rod. Install the rod extension if the spool of strapping material is wider than 3 inches. To install the extension, wind the rod coupler onto the end of the threaded rod and tighten the set screw. Refer to FIG. 1.

NOTE: The threaded rod will accommodate spools up to 3 inches wide.

Step 4: Feed the end of the strapping material between the upper and lower rollers of the guide wheel assembly (45-645-003) as shown in FIG. 2.

Step 5: Reattach the outer retaining disc and wing nut.

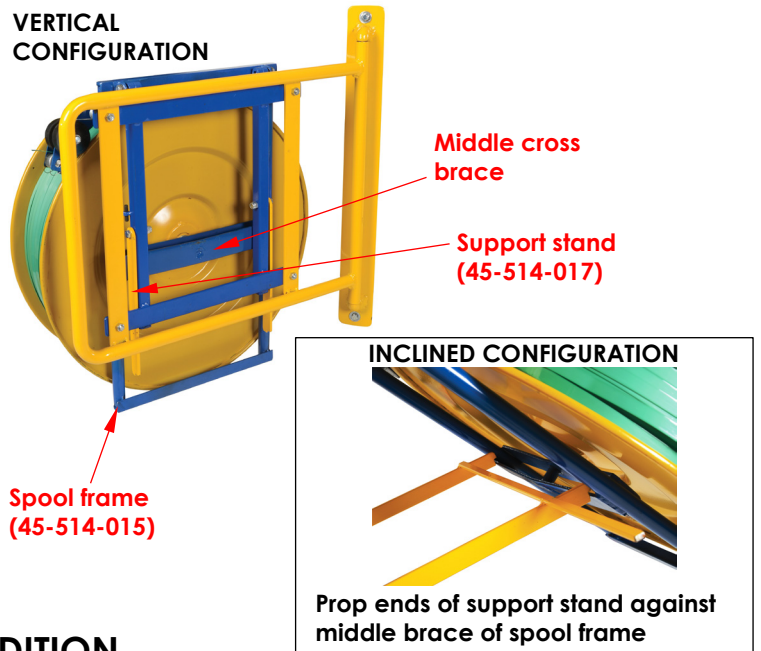


DISPENSING STRAP MATERIAL

Slowly and steadily pull the free end of the strapping material to dispense it. The spool holding mechanism (inner and outer discs and threaded rod) will rotate. Do not pull quickly and forcefully on the end of the strap or the spool holder will over rotate and dispense too much strapping.

To change spools of strapping, follow the [LOADING STRAP MATERIAL](#) instructions on p. 5.

The spool holding assembly can be used in either of 2 configurations: vertical and inclined. To incline the assembly, pull the bottom of the spool frame (45-514-015) away from the wall. Lift the bottom end of the yellow support stand (45-514-017). Prop the free ends of the support stand against the middle cross brace of the spool frame.



RECORD OF SATISFACTORY CONDITION

Record the condition of the device before putting it into service for the first time. Include observations about the spool retaining discs, welds, frame elements (frame, support stand, safety chain, quick link, snap hook, wheels, guide wheel assembly, and strap dispensing mechanisms (collectively "features")). Thoroughly photograph the unit so that all features are clearly imaged. Take close range photographs of all labels applied to the unit. Add the photographs to the record. Describe where each label is located. Collect all photographs and writings in a file. This file is a record of the device in satisfactory condition. During future inspections, compare your observations to the *RECORD* to determine if the unit is in satisfactory condition.

INSPECTIONS & MAINTENANCE

NOTICE

Proper use, maintenance, and storage are essential for this product to function properly.

- o Inspect the unit as instructed and as frequently as instructed.
- o Install the unit in a dry location.

Compare the results of each inspection to the [RECORD OF SATISFACTORY CONDITION](#) to determine whether the unit is in satisfactory condition. DO NOT use the dispenser unless it is in satisfactory condition. Only use manufacturer-approved replacement parts to restore the unit to satisfactory condition. Never make temporary repairs of damaged or missing parts. **DON'T GUESS! If you have any questions about the condition of your unit, contact the [TECHNICAL SERVICE](#) department.** The phone number is provided on the cover page of this manual. Purely cosmetic changes, such as chipped paint, are not changes from satisfactory condition. However, touchup paint should be applied to all areas where the finish is damaged as soon as the damage occurs because exposed metal rusts. Left unaddressed, rusting could compromise the soundness of the metal and create a safety hazard.

Inspect the following before each use:

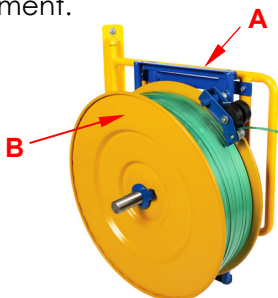
1. **Attachment to wall:** Confirm that all anchoring hardware is in satisfactory condition. The mounting bracket must be solidly attached to the wall. Tighten fasteners whenever necessary.
2. **Spool holding assembly:** Make sure that the retaining discs firmly clamp the spool between them. The wing nut should be wound tightly against the outer retaining disc.
3. **Labeling:** All labels should be easily readable and in place as shown in the [LABELING DIAGRAM](#). If a label is damaged, not easily readable, or missing, contact [TECHNICAL SERVICE](#) to order a replacement.

Inspect the following at least 1 time per month:

1. **Frame elements (spool frame; wall frame; intermediate frame; support stand):** Inspect welds for cracks and other forms of damage. Inspect each element for damage, warps, and cracks. Also examine the connection points between frame elements. Make sure that all fasteners are securely connected. Bolt holes must not be elongated, warped, or cracked. Examine the spool peg. Make sure that the peg is not cracked, bent, or damaged in other ways.
2. **Spool holding assembly:** Examine the inner and outer retaining discs, the wing nut, the threaded rod, the rod coupler and set screw, and the rod extension. Make sure that the wing nut threads smoothly and easily onto the threaded rod and the rod extension. Confirm that the rod and extension are both straight and that the threads are undamaged. Inspect the retaining discs for warps and cracks.
3. **Guide wheel assembly (see Fig. 2 on p. 5):** Examine the guide wheel assembly (roller bracket, upper and lower rollers, spring, washers, roller pin, and cotter pins) for damage, missing, worn, or loose parts. Inspect the guide wheel peg for cracks, bends, and other damage.

LABELING DIAGRAM

Label content and location are subject to change so your product might not be labeled exactly as shown. Compare the diagram below to your [RECORD OF SATISFACTORY CONDITION](#). If differences between actual labeling and this diagram exist, contact [TECHNICAL SERVICE](#). Replace all labels that are damaged, missing, or not easily readable (e.g. faded). To order replacement labels, or to inquire whether your unit is properly labeled, contact the technical service and parts department online at http://www.vestilmfg.com/parts_info.htm or by calling (260) 665-7586 and asking for the Parts Department.



A (on upper cross bar): Label 208

⚠ WARNING	⚠ ADVERTENCIA	⚠ AVERTISSEMENT
KEEP CLEAR OF PINCH POINT	MANTENGASE ALEJADO DEL PUNTO DE CORTE	SE TENIR À DISTANCE DU POINT DE PINCEMENT <small>208A</small>

B (on side of tool tray): Label 1153

MODEL / MODÉLO / MODÈLE _____
WEIGHT / PESO / MASS _____
CAPACITY / CAPACIDAD / CAPACITÉ _____
SERIAL / SERIE / SÉRIE _____
UNITS: 2.2 lb. = 1kg 1" (or 1in.) = 2.54cm 1153



LIMITED WARRANTY

Vestil Manufacturing Corporation ("Vestil") warrants this product to be free of defects in material and workmanship during the warranty period. Our warranty obligation is to provide a replacement for a defective, original part covered by the warranty after we receive a proper request from the Warrantee (you) for warranty service.

Who may request service?

Only a warrantee may request service. You are a warrantee if you purchased the product from Vestil or from an authorized distributor AND Vestil has been fully paid.

Definition of "original part"?

An original part is a part used to make the product as shipped to the Warrantee.

What is a "proper request"?

A request for warranty service is proper if Vestil receives: 1) a photocopy of the Customer Invoice that displays the shipping date; AND 2) a written request for warranty service including your name and phone number. Send requests by one of the following methods:

<u>US Mail</u>	<u>Fax</u>	<u>Email</u>
Vestil Manufacturing Corporation 2999 North Wayne Street, PO Box 507 Angola, IN 46703	(260) 665-1339 <u>Phone</u> (260) 665-7586	info@vestil.com Enter "Warranty service request" in subject field.

In the written request, list the parts believed to be defective and include the address where replacements should be delivered. After Vestil receives your request for warranty service, an authorized representative will contact you to determine whether your claim is covered by the warranty. Before providing warranty service, Vestil will require you to send the entire product, or just the defective part (or parts), to its facility in Angola, IN.

What is covered under the warranty?

The warranty covers defects in the following original, dynamic parts: motors, hydraulic pumps, motor controllers, and cylinders. It also covers defects in original parts that wear under normal usage conditions ("wearing parts"), such as bearings, hoses, wheels, seals, brushes, and batteries.

How long is the warranty period?

The warranty period for original dynamic components is 30 days. For wearing parts, the warranty period is 30 year. Both warranty periods begin on the date Vestil ships the product to the Warrantee. If the product was purchased from an authorized distributor, the periods begin when the distributor ships the product. Vestil may, at its sole discretion, extend a warranty period for products shipped from authorized distributors by up to 30 days to account for shipping time.

If a defective part is covered by the warranty, what will Vestil do to correct the problem?

Vestil will provide an appropriate replacement for any covered part. An authorized representative of Vestil will contact you to discuss your claim.

What is not covered by the warranty?

The Warrantee (you) is responsible for paying labor costs and freight costs to return the product to Vestil for warranty service.

Events that automatically void this Limited Warranty.

- Misuse;
- Negligent assembly, installation, operation or repair;
- Installation/use in corrosive environments;
- Inadequate or improper maintenance;
- Damage sustained during shipping;
- Collisions or other accidents that damage the product;
- Unauthorized modifications: Do not modify the product IN ANY WAY without first receiving written authorization from Vestil.

Do any other warranties apply to the product?

Vestil Manufacturing Corp. makes no other express warranties. All implied warranties are disclaimed to the extent allowed by law. Any implied warranty not disclaimed is limited in scope to the terms of this Limited Warranty. Vestil makes no warranty or representation that this product complies with any state or local design, performance, or safety code or standard. Noncompliance with any such code or standard is not a defect in material or workmanship.