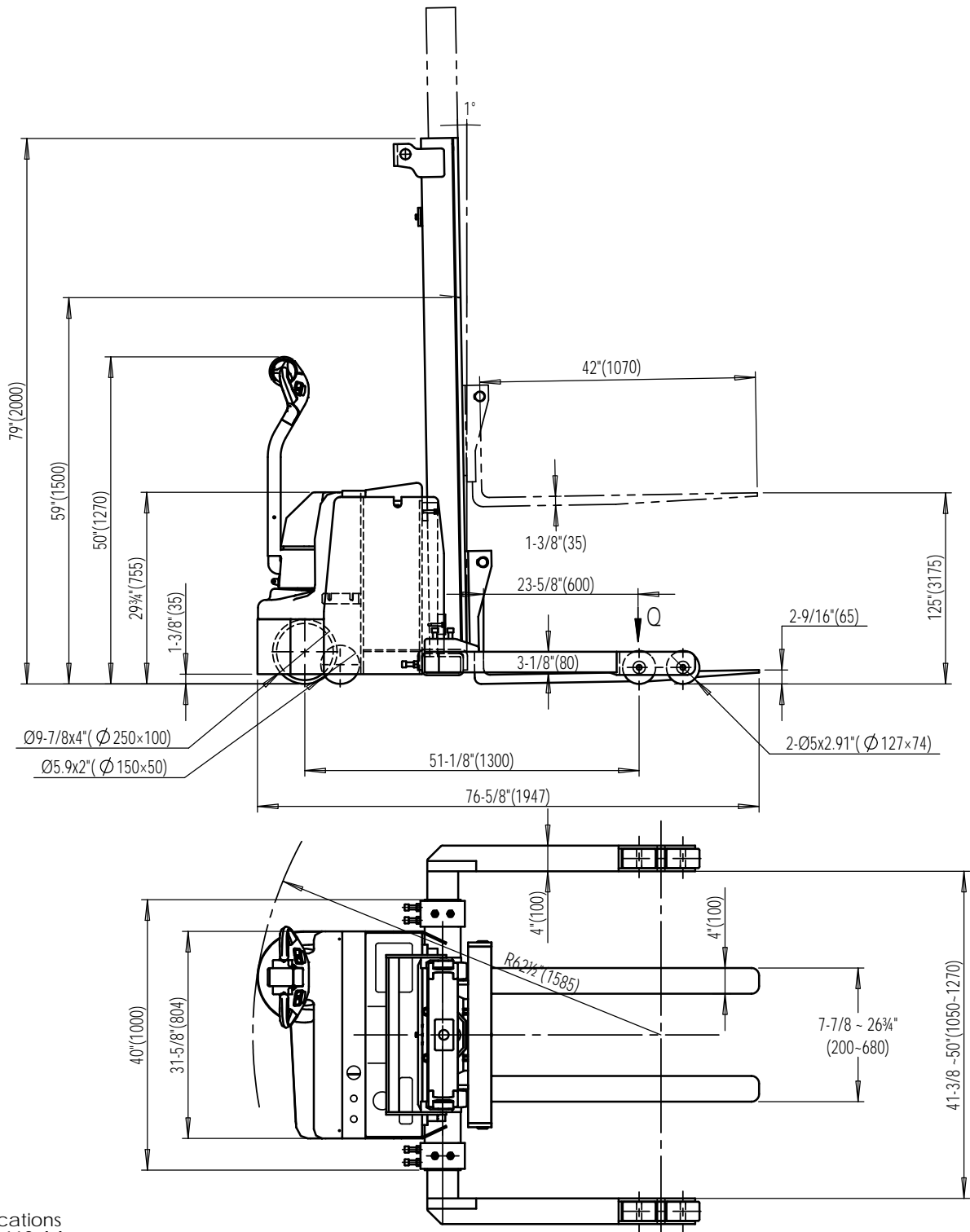


# S3-118-AA (3,000 lbs Fully Powered Stacker with Adjustable Forks & Adjustable Legs)



## Specifications

Model # S3-118-AA  
 Capacity (UDL): 3,000 lbs 0 - 62"  
 Capacity (UDL): 2,500 lbs 62 - 118"  
 Lift height: 118"  
 Lowered height: 2-9/16"  
 Adjustable Forks & adjustable legs  
 Overall mast height (Retracted): 79"  
 Overall mast height (Extended): 136-13/16"  
 Drive wheel: Ø9-7/8x4"  
 Front wheel: 2 - Ø5x2.9"  
 Stabilizer wheel: Ø5.9x2.0"  
 Drive Motor: DC24V/1.2Kw  
 Lift Motor: DC24V/3.0Kw  
 Battery: 2x12V/80-95Ah  
 Battery Charger: 24V/8amp  
 Travel Speed w/load: 2.8m/h  
 Travel Speed w/o load: 3.4m/h

<b>VESTIL MANUFACTURING CORP.</b>	
Model:	S3 - 118 - AA
Description:	3,000 lbs Fully Powered Stacker with Adjustable Forks & Adjustable Legs
Design: T.M	Date: 08/11/15