



Vestil Manufacturing Corp.

2999 North Wayne Street, P.O. Box 507, Angola, IN 46703

Telephone: (260) 665-7586 -or- Toll Free (800) 348-0868

Fax: (260) 665-1339

<http://www.vestilmfg.com/> e-mail: info@vestil.com

PTM-GPT Powered Trailer Mover Instruction Manual



Receiving instructions:

After delivery, remove the packaging from the product. Inspect the product closely to determine whether it sustained damage during transport. If damage is discovered, record a complete description of it on the bill of lading. If the product is undamaged, discard the packaging.

NOTE:

The end-user is solely responsible for confirming that product design, use, and maintenance comply with laws, regulations, codes, and mandatory standards applied where the product is used.

Replacement Parts and Technical Assistance:

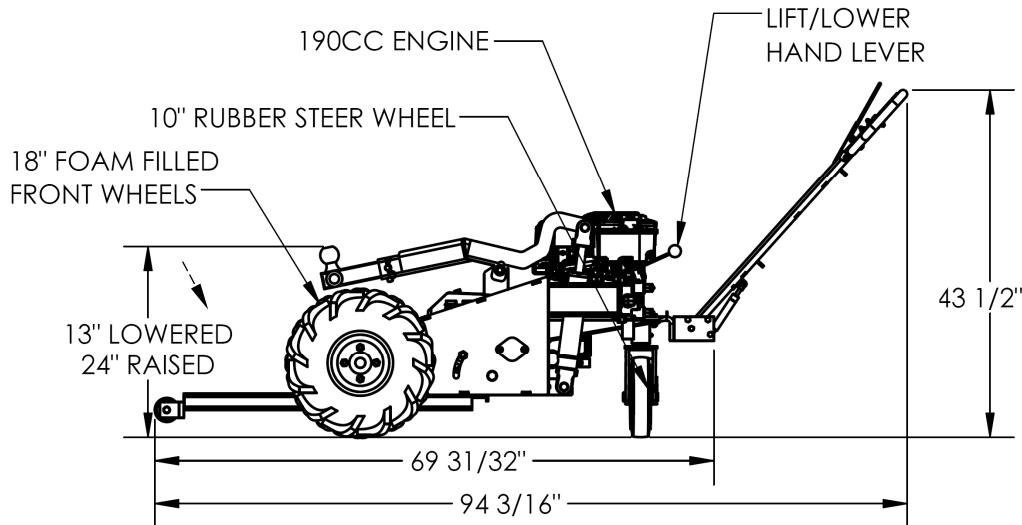
If you have questions that are not addressed in these instructions and to order replacement parts, labels, and accessories, call (260) 665-7586 and ask for the Service and Parts Department. The department can also be contacted online at http://www.vestilmfg.com/parts_info.htm.

Table of Contents

Specifications.....	2
Signal Words.....	2
Safe Use Recommendations.....	2 - 3
Operation.....	3
Hitch Assembly Controls.....	4
Using the Hitch.....	4
Parking Brake.....	5
Manual Mode.....	5
Inspections and Maintenance.....	5 - 6
FIG. 1: Complete Exploded View.....	7 - 8
FIG. 2: Power Unit Exploded View.....	9
FIG. 3: Sprocket Drive (Right Side) Exploded View.....	10
FIG. 4: Sprocket Drive (Left Side) Exploded View.....	11
FIG. 5: Handle Assembly Exploded View.....	12
Labeling Diagram.....	13
Limited Warranty.....	14

SPECIFICATIONS:

Dimensions and other product attributes appear in the diagrams and table below.



Model	Service Range of Ball Hitch	Uniform Pulling Capacity	Hitch Lifting Capacity (Max. Tongue Weight)	Net Weight
PMT-GPT	13" to 24" (33.0cm to 61.0cm)	12,000 lb. (5,454.5 kg)	1,000 lb. (454.5kg)	549 lb. (249.5 kg)

SIGNAL WORDS:

This manual uses SIGNAL WORDS to direct the reader's attention to important safety-related messages. These messages describe uses of the product that could result in personal injury or property damage. Each signal word corresponds to a specific hazard level. The following are definitions of signal words that might appear in this manual.

- ⚠ DANGER** Identifies a hazardous situation which, if not avoided, WILL result in DEATH or SERIOUS INJURY. Use of this signal word is limited to the most extreme situations.
- ⚠ WARNING** Identifies a hazardous situation which, if not avoided, COULD result in DEATH or SERIOUS INJURY.
- ⚠ CAUTION** Indicates a hazardous situation which, if not avoided, COULD result in MINOR or MODERATE injury.
- NOTICE** Identifies practices likely to result in product/property damage, such as operation that might damage the product.

SAFE USE RECOMMENDATIONS:

Vestil strives to identify all foreseeable hazards associated with the use of its products. However, material handling is dangerous and no manual can address every risk. Ultimately the most effective way to prevent injury is for the operator to apply sound judgment whenever using this device.

- ⚠ WARNING** Improper or careless operation of this device might result in serious personal injuries.
 - **Read and understand this entire manual before assembling, using or servicing the product.** Read the manual whenever necessary to refresh your understanding of proper operation and maintenance procedures. An instruction manual for the gasoline engine is provided with this unit. Read the entire manual before operating the mover for the first time.
 - DO NOT exceed the capacity of your mover. (See label 287 in "Labeling Diagram" on p. 13 and table above).
 - Inspect the mover as suggested in "Inspections and Maintenance" on pages 5-6. DO NOT use the device unless it is in normal condition.
 - ONLY use the mover to transport trailers across level surfaces! DO NOT attempt to tow a trailer up/down sloped terrain. NEVER park the mover on sloped terrain. Park the mover on level ground and apply the parking brake. (Warnings continue on page 3)

⚠WARNING (continued from p. 2)

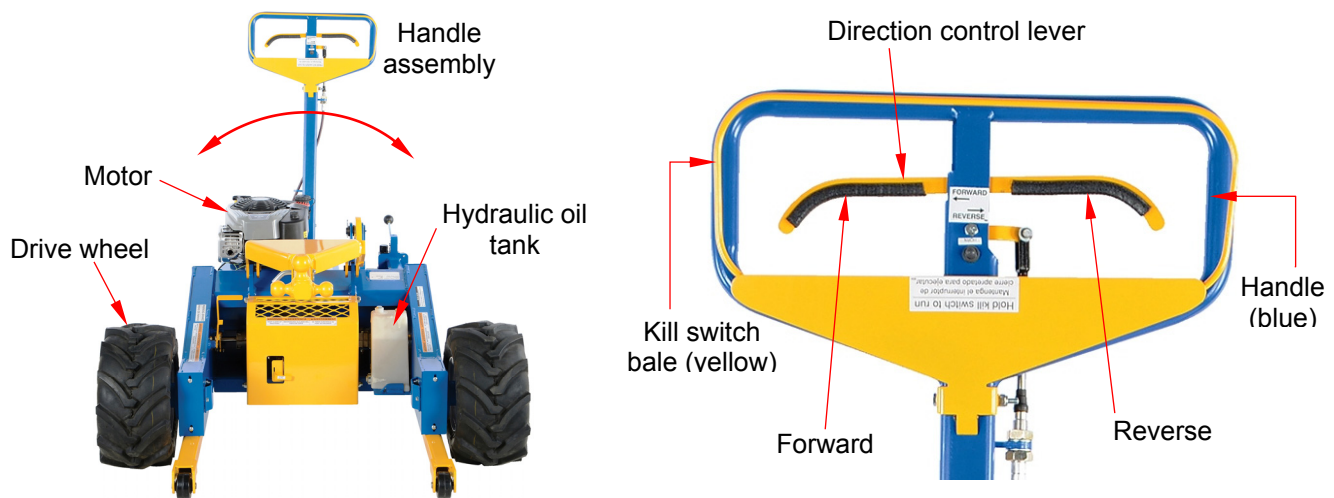
- Only use this product to tow trailers. While using the mover, DO NOT allow people to ride on it, on the trailer, or on/in the vehicle on the trailer.
- Only use the mover to tow a trailer if you are familiar with the controls.
- Select the proper ball hitch for the trailer. DO NOT use the mover if the trailer cannot be securely mounted on the ball hitch. DO NOT use a ball that is too small for the trailer.
- DO NOT modify the mover in any way without express, written approval from Vestil. Unapproved modifications automatically void the Limited Warranty (see p. 14) and might make the product unsafe to use.
- DO NOT use this product UNLESS every label shown in the "Labeling diagram" on p. 13 is in place, undamaged, and easily readable.

NOTICE

Proper maintenance is essential to keep this product in normal condition and to maximize the service life of the unit.

- DO NOT fill the hydraulic system with brake fluid or jack oils. Only fill the hydraulic system with either anti-wear hydraulic oil, viscosity grade 150 SUS at 100°F (ISO 32cSt at 40°C) or Dexron transmission fluid.
- Fill the engine with oil and gasoline as instructed in the manufacturer's manual. Perform maintenance on the engine as directed in the manual.

OPERATION:



Starting the engine and controlling direction of movement:

1. Find the choke and throttle controls for the engine. Apply the engine starting procedure in the manufacturer's instruction manual.
2. Squeeze the kill switch bale against the handle with one hand and pull the starter cord with the other hand.
3. After the engine starts, set the choke switch to the open position and allow the engine to warm up for a few minutes.
4. Set the engine throttle to the desired speed: increasing the throttle will increase the speed and vice versa.

Propulsion:

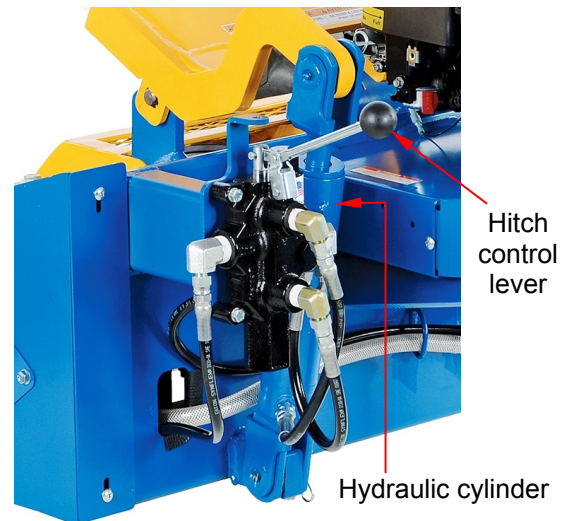
- a. To move forward, squeeze the right side of the direction control lever towards the handle. The further the lever is moved the faster the unit moves. To stop, release the lever.
- b. To move in reverse, squeeze the left side of the lever towards the handle.
- c. Practice shifting between forward and reverse. When moving heavy loads, drive more slowly to decrease power demand on the engine.

NOTE: Do not quickly shift from forward to reverse or vice versa. Sudden shifts might damage the transaxle.

Steering:

Steer the unit by swinging the handle to one side or the other. While turning, the rpm's of the outer drive wheel increase and the rpm's of the inner drive wheel decrease. When turning sharply in one direction or the other, the difference between rpm's of the wheels is greater (i.e. the outer wheel turns much faster than the inner wheel).

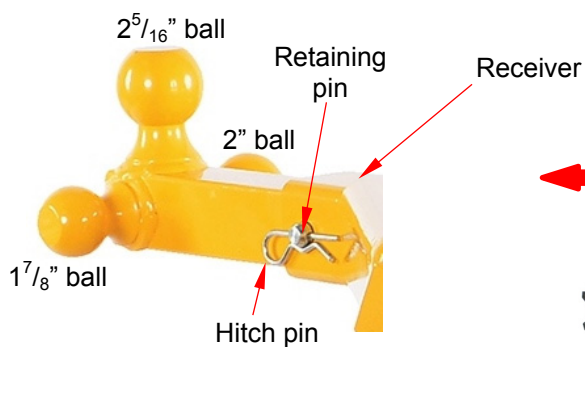
HITCH ASSEMBLY CONTROLS:



Raising and lowering the hitch:

1. Release the direction control lever.
2. Adjust the engine throttle to mid-speed.
3. **Raise the hitch assembly:**
 - a. Grasp the knob of the hitch control lever and lift it. The piston (of the hydraulic cylinder) extends and causes the hitch assembly to rise.
 - b. Releasing the lever causes the piston to stop extending.
 - c. When the piston is fully extended, the hitch assembly is fully elevated. Release the control lever as soon as full extension is achieved. Do not continue to hold the control lever when the piston is fully extended. The hydraulic fluid might overheat and cause permanent damage to the hydraulic system.
4. **Lower the hitch assembly:** [NOTE: The engine does not have to be running to lower the hitch assembly.]
 - a. Press the hitch control lever down.
 - b. The load will be lowered at a controlled speed. Releasing the lever will cause the load to stop and hold position. The lowering speed can be adjusted. If the load is lowered too quickly, a safety device called a velocity fuse (in the cylinder) will close. When the fuse is closed, hydraulic fluid cannot flow from the cylinder to the reservoir. Consequently, the piston cannot retract and the hitch does not lower. If this happens, you must reset the velocity fuse by raising the hitch.

USING THE HITCH:



To hitch a trailer to the mover:

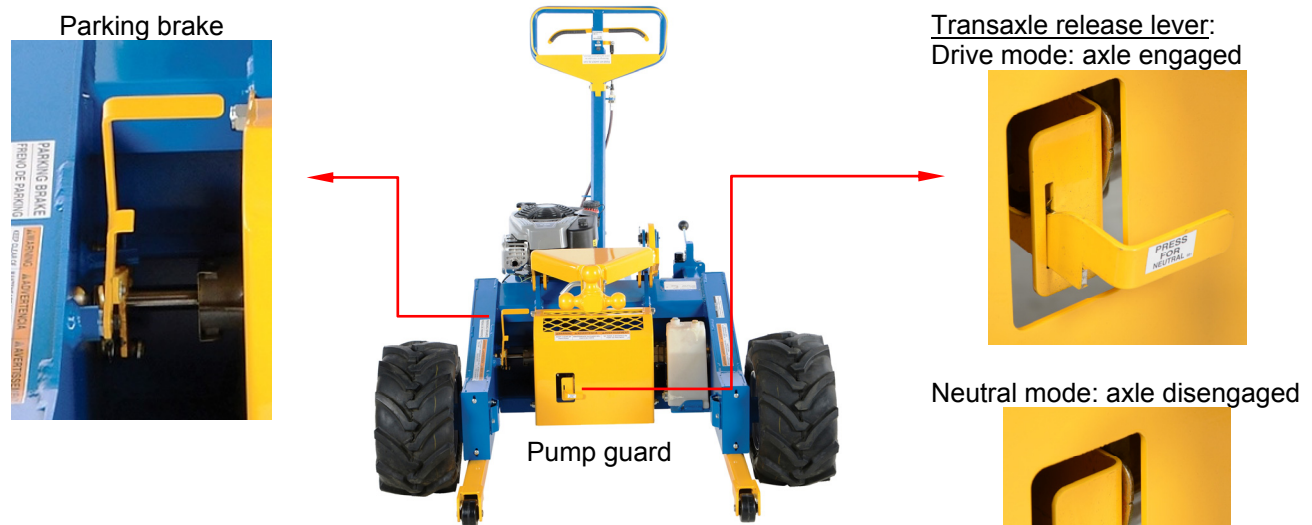
5. Lower the hitch assembly. See step 4 (above).
6. Make sure that the correct ball hitch is pointing upwards. Ball diameter is stamped into the flat, top surface of each hitch ball. To change ball hitches, unpin the hitch from the receiver by removing the hitch pin and retaining pin, orienting the hitch with the appropriate ball on top, and reconnecting the hitch to the receiver.
7. Drive the mover to the trailer. Position it in front of the trailer with the ball hitch directly below tongue of the trailer.
8. Use the hitch control lever (see step 3) to raise the ball hitch into the receiver. Then, apply the hitch lock (on the trailer tongue) to secure the ball inside the receiver.
9. Raise the hitch assembly only as high as necessary to ensure that the trailer moves freely.
10. Drive the trailer to the desired location by following the "Propulsion" and "Steering" sections on p. 3.
11. To disconnect the trailer from the mover, unlock the hitch. Then, lower the hitch assembly by pressing down the hitch control lever until the ball hitch is completely disengaged from the tongue of the trailer.

PARKING BRAKE:

This product is equipped with a parking brake. This brake should be applied when the unit is motionless. Do not use the parking brake to slow the unit.

1. To apply the brake pull the brake lever up until it locks.
2. To release the brake, push the lever downward.

NOTE: ONLY park the mover on level ground.



Unload the hydraulic system before putting away the mover. Completely lower the hitch assembly and detach the trailer from the hitch ball.

MANUAL/NEUTRAL MODE:

The unit can be moved manually by putting the transmission into “neutral”. When in neutral, the drive wheels are decoupled from the transaxle.

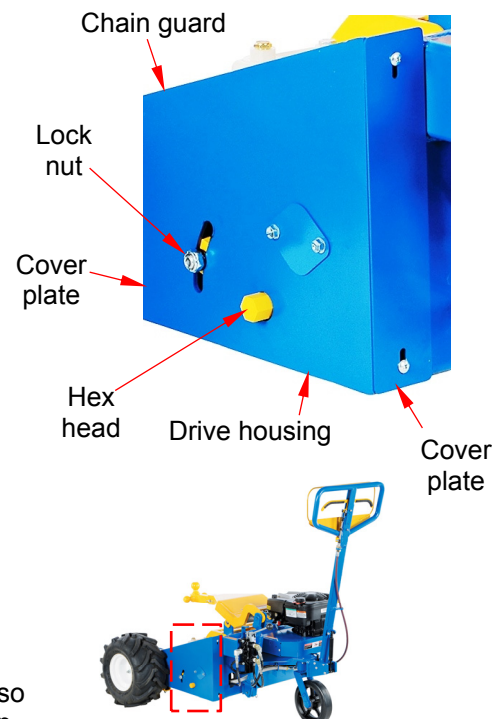
1. Locate the transaxle release lever (shown above right).
2. Push the lever in and down until it seats inside the release bracket.
3. Lift the lever and pull it towards you to reengage the drive system.

INSPECTIONS AND MAINTENANCE:

Written record — before using the product for the first time, make a written record that describes its appearance and functions. Cycle the hitch assembly up and down. Describe the motion of the assembly. Drive the unit in forward and in reverse. Add descriptions of the unit’s motion including sounds. Thoroughly photograph the unit and each label. Add the photos to the record. Describe where each label is located. ***This record establishes normal condition.*** When conducting the following inspections, compare your observations to the record to determine if the mover is in normal condition. Do not use it unless it is in normal condition. Cosmetic changes, like damaged paint/powder coat do not constitute changes from normal condition. However, touchup paint should be applied to all affected areas as soon as damage occurs. Contact Technical Service (contact information appears on the cover page) if you have questions that are not addressed in these instructions.

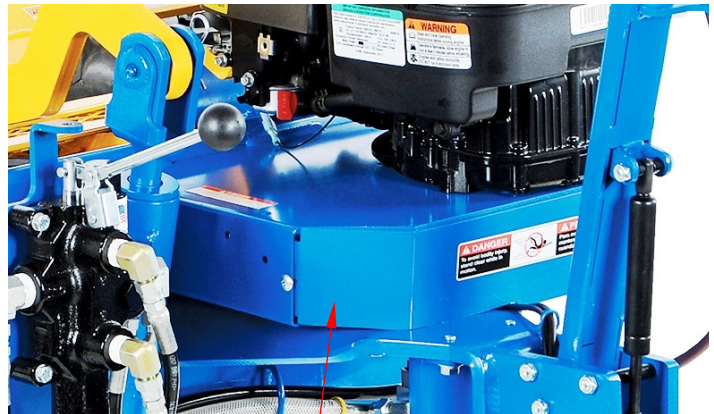
Inspect the following components:

1. Motor: Maintain the motor as instructed in the manufacturer’s manual (supplied with the unit).
2. Drive chain (one for each drive wheel): every other oil change, inspect the chains. To access the chains, remove the cover plates fastened to both ends of the drive housing.
 - A. Check the tension of both chains. They should not be taut but also should not be so loose that they slap against the housing or jump on the sprockets. Adjust the chains by applying pressure to the hex head with a wrench while loosening the lock nut.



- B. [Refer to figures 3 & 4 on pages 10 & 11 respectively] Check set screws on the front and rear sprockets, drive shaft coupling, motor pulley, and pump pulley. Confirm that the set screws are tight. Tighten all loose screws. Apply thread locker to keep connections tight.
- C. The front wheel sprocket should line up with the axle sprocket. See Figures 3 & 4 (p. 10 & 11).
- D. Lubricate the drive chains with spray grease as needed, e.g. if the drive train becomes noisy.

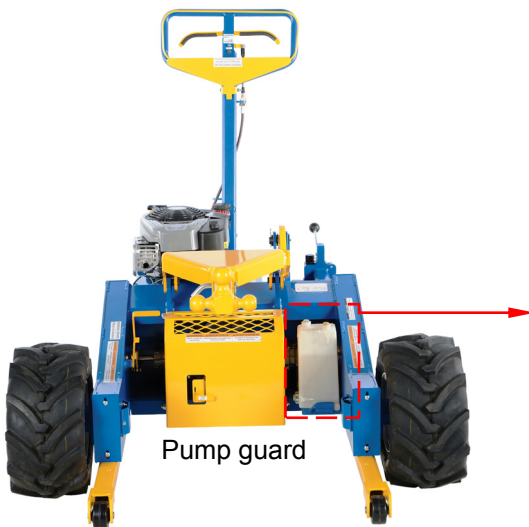
3. At least once per month, remove the drive belt guard (shown below). Determine the condition of the drive belt and drive pulley (items 4 and 5 in FIG. 2 on p. 9). Unseat the belt from the drive pulleys to relieve belt tension. Examine the bearings and shaft on the hydraulic pump (item 6 on p. 9) for wear. Replace any component that is significantly worn. Replace the belt if necessary.



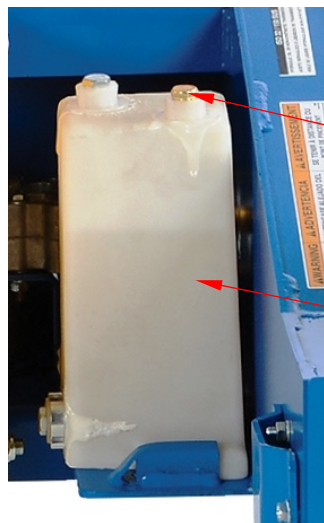
Drive belt guard

4. Check the hydraulic system.

- a. Before each use, cycle the hitch all the way up and then all the way down. Watch the cylinder and hitch assembly as they rise and lower. Movement should be smooth in both directions (no binding, jumps, skips).
- b. At least once per month, examine the hydraulic oil. The oil reservoir is located next to the hydraulic pump. First, fully lower the hitch assembly. Then, remove the brass fill plug from the top of the reservoir and examine the oil. Change the oil if it darkens, becomes gritty, or has a milky appearance (indicating that water is present). Replace the oil with AW-32 hydraulic fluid or its equivalent.
- c. Before each use, check the hydraulic hoses for significant wear, kinks, cuts, etc. Replace damaged hoses.



Pump guard

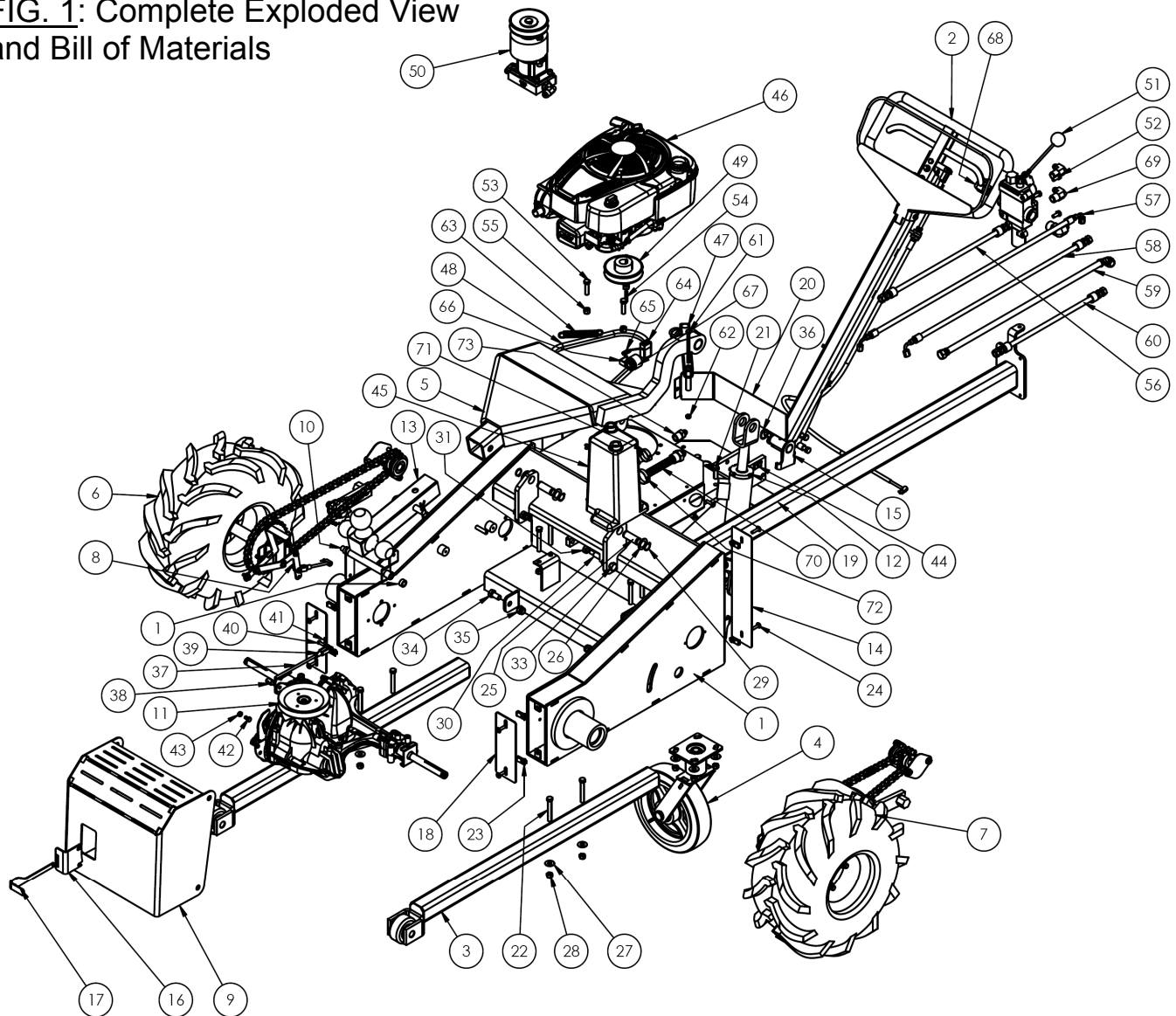


Brass fill plug

Reservoir

- 5. Before each use make sure all labels are in place & in readable condition (see "Labeling diagram" on p. 13).
- 6. Periodically clean dirt and debris from all surfaces of the cart to keep the finish in good condition. Store the unit indoors.

FIG. 1: Complete Exploded View and Bill of Materials



Item	Part no.	Description	Qty.	Item	Part no.	Description	Qty.
1	50-514-011	Weldment, frame	1	16	50-016-024	Bracket, neutral, formed	1
•2	50-525-007	Subassembly, handle	1	17	50-040-010	OR4 TA Neutral lever	1
3	50-516-002	Subassembly, bracket w/ front wheel	2	18	50-024-016	Cover, leg, front	2
4	50-632-001	Assembly, caster w/ rig	1	19	50-024-013	Cover, lower belt	1
5	50-514-010	Weldment, frame, lift arm	1	20	50-024-011	Cover, rear belt	1
••6	50-542-001	Subassembly, sprocket, drive, right	1	21	11107	3/8"-16x1 1/4" hex bolt, gr. A, zinc	4
•••7	50-542-002	Subassembly, sprocket, drive, left	1	22	11114	3/8"-16x2 3/4" HHCS #2, z-plated	8
8	50-540-009	Assembly, lever, brake	1	23	99-145-105	1/4"-20 U-nut	11
9	50-024-007	Cover, front transaxle, formed	1	24	29185	Screw., machine, truss head	13
10	50-612-005	Weldment, pivot brake shaft	1	25	38-112-019	Pin, hinge pivot	2
11	50-612-006	Assembly, transaxle, 3/4" shaft	1	26	33424	Machine bushing, low carbon, plain finish, 3/4"x18ga.	4
12	99-021-930-001	Cylinder, hydraulic, 2"x6" piston, with clevis mounts	1	27	33008	3/8" flat washer, low carbon, USS, zinc plated	8
13	99-001-007	3-ball hitch 1 7/8", 2", 2 5/16")	1	28	33106	3/8" hex nut, gr. A, zinc plated	12
14	50-024-001	Cover, rear leg	2	29	68015	3/4" external retaining ring, phosphate	4
15	03-612-002	Assembly, hinge pin	2	30	01-118-001	Bolt, cylinder retaining	1

Parts list continues on page 8

Item	Part no.	Description	Qty.	Item	Part no.	Description	Qty.
31	36209	1/2"-13 hex jam nut, plain	1	*53	11109	3/8"-16x1 1/2" hex bolt, gr. A, zinc finish	3
32	50-113-018	Spacer, brake link	1	*54	99-130-001	Pin, keystick	1
33	11207	1/2"-13x1 1/4", HHCS #2, z-plated	2	*55	37024	3/8"-16 Nylon insert lock nut, gr. 2, z-finish	3
34	11205	1/2"-13x1", gr. A, z-plated	2	*56	50-623-001	Subassembly, hose, cylinder down	1
35	37030	1/2"-13 Nylon insert lock nut	4	*57	50-623-002	Subassembly, hose, feed	1
36	20-117-003	External retaining ring, 1" shaft	2	*58	50-623-003	Subassembly, hose, return	1
37	50-145-009	Transaxle link, threaded rod	1	*59	50-623-004	Subassembly, hose, suction	1
38	50-120-001	Nut, brake nut	1	*60	50-623-005	Subassembly, hose, cylinder up	1
39	43520	2"x 7/16"x 5/8"x 1/4"-28 adjustable yoke end	1	*61	11019	1/4"-20x4" hex bolt, gr. A, z-plated	1
40	66026	1/4"x1" clevis pin	1	*62	36102	1/4"-20 hex nut, gr. A, z-plated	1
41	65012	1/16"x 1/2" cotter pin, z-plated	2	*63	50-146-001	Spring, extension	1
42	11001	1/4"-20x 1/2" hex bolt, gr. A, z-plated	1	*64	50-139-001	Battery, 9V	1
43	36102	1/4"-20 hex nut, gr. A, z-plated	1	*65	50-034-002	Accessories, electrical, 9V battery snap	1
44	99-145-104	U-nut	2	*66	50-034-003	Accessories, electrical, 9V battery clip	1
*45	50-523-002	Subassembly, reservoir	1	*67	99-034-134	Horn, ALL-T	1
*46	99-159-007	Engine, 190cc	1	*68	99-116-074	Fitting, hydraulic, 06MJ-12MP 90°	2
*47	50-540-005	Assembly, belt tensioner	1	*69	99-116-073	Fitting, hydraulic, 06MJ-08MP 90°	2
*48	15-042-003	Belt, 1/2"x55"	1	*70	01-031-005	Filter, reservoir, hydraulic	1
*49	50-027-003	Pulley, engine	1	*71	99-031-096	Accessories, clamp, 2 ear, 1 1/8"	1
*50	50-643-001	Subassembly, pump, hydraulic, gear	1	*72	99-031-095	Accessories, clamp, 2 ear, 1 7/16"	1
*51	50-638-003	Assembly, T4 valve	1	*73	99-116-060	Fitting, hydraulic, 06MJ-08MP straight	1
*52	11053	5/16"-18x 3/4", HHCS, #2, z-plated	3				

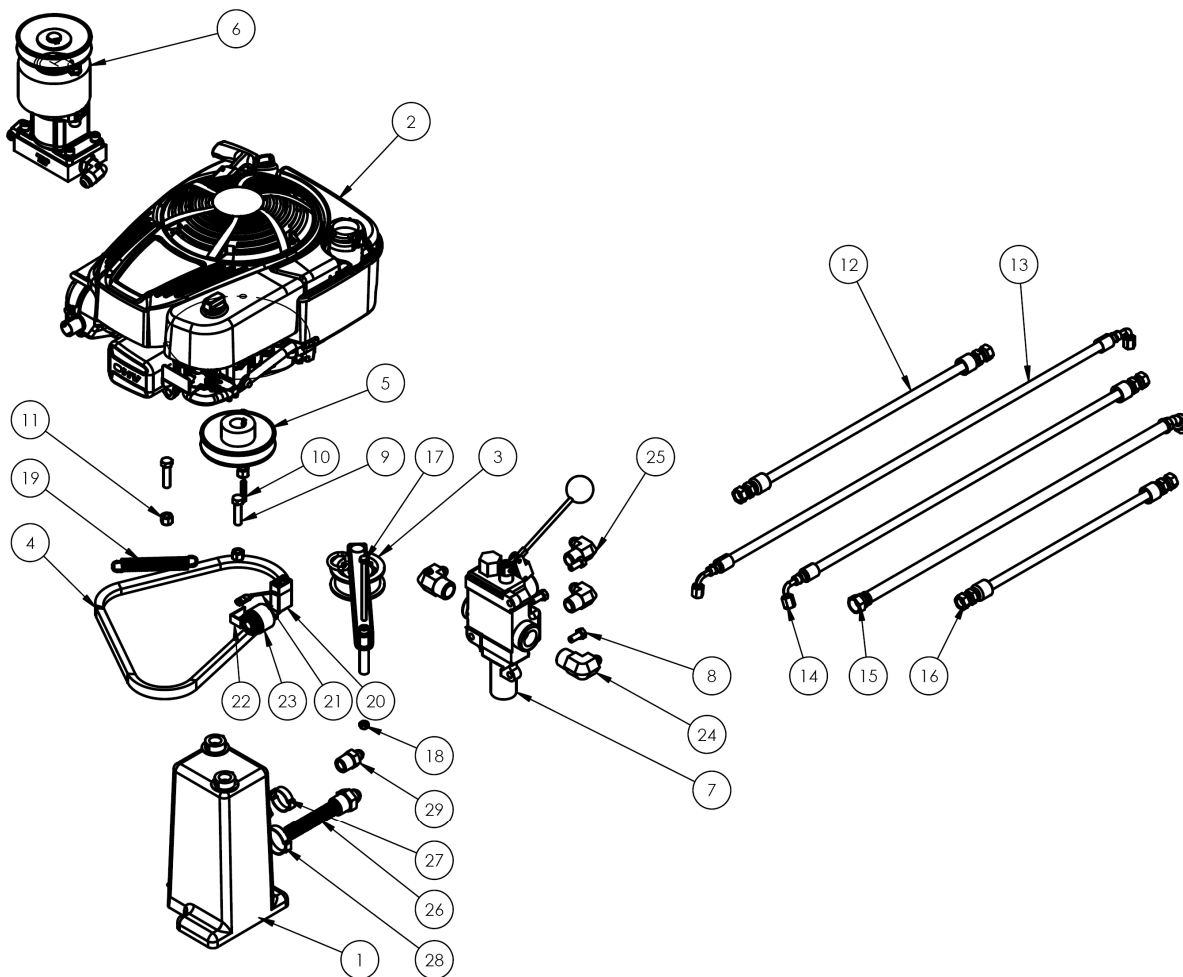
• Item 2 shown in detail in FIG. 5

•• Item 6 shown in exploded view in FIG. 3

••• Item 7 shown in exploded view in FIG.4

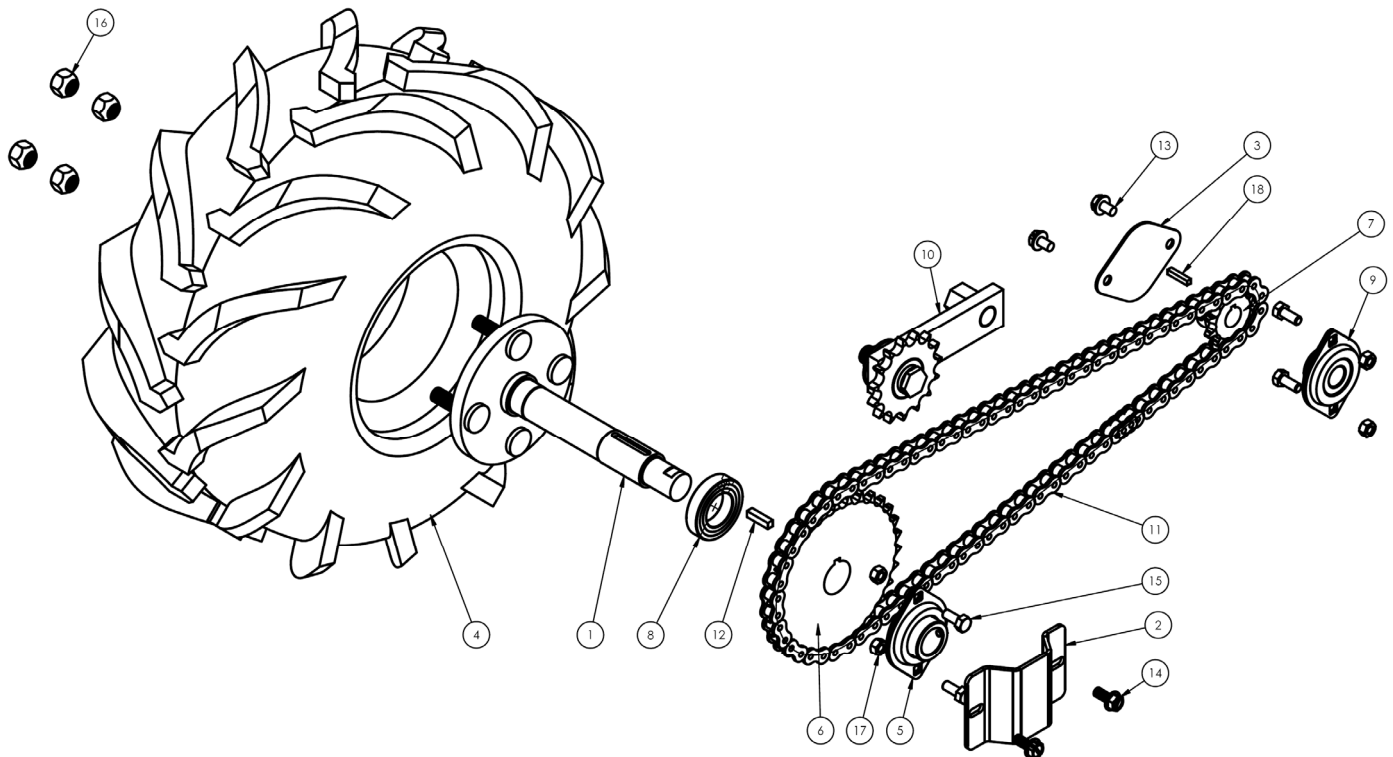
* Items 45-73 comprise the power unit subassembly shown in FIG. 2.

FIG 2: Power Unit Subassembly Exploded View and Bill of Materials



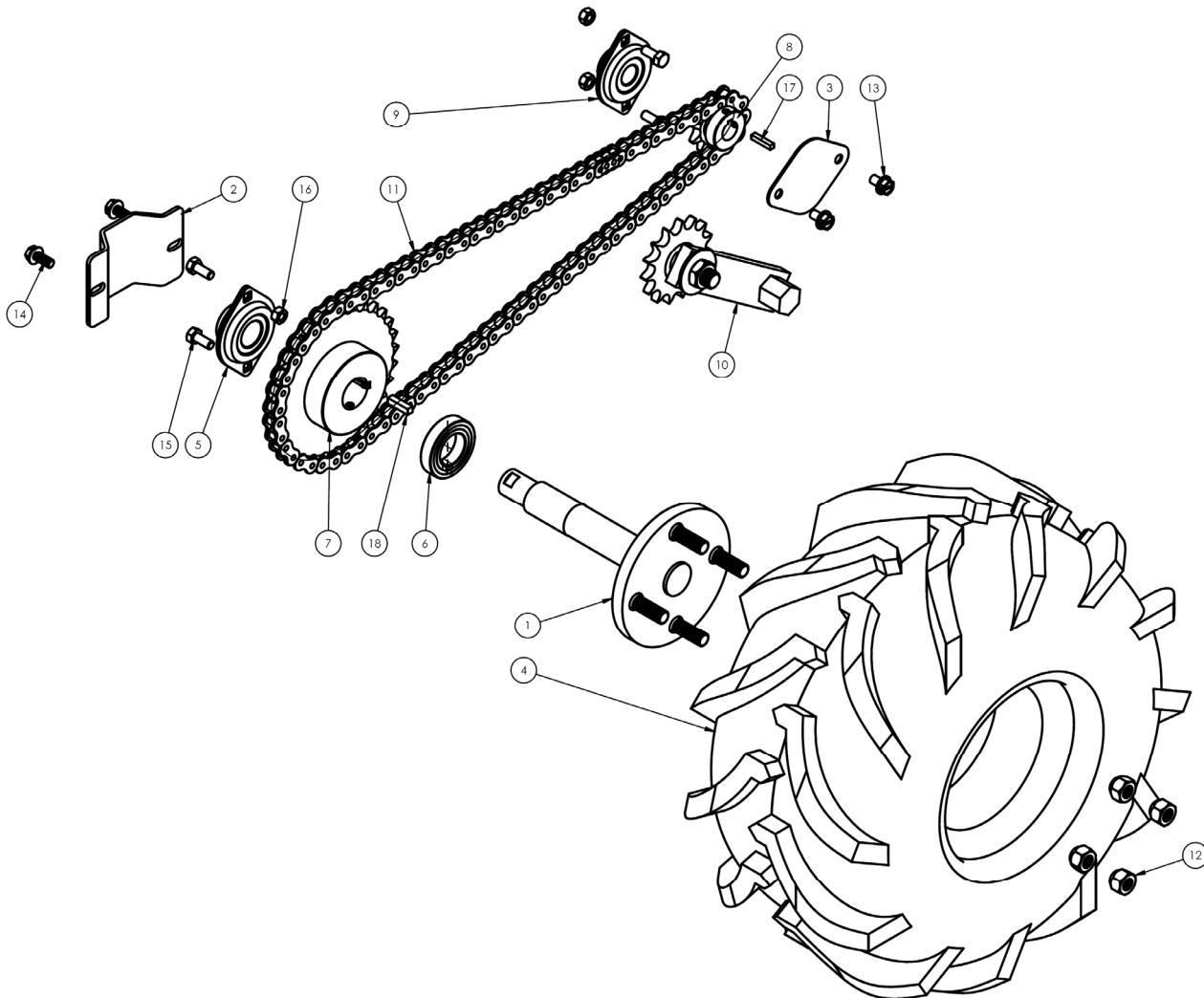
Item	Part no.	Description	Qty.	Item	Part no.	Description	Qty.
1	50-523-002	Subassembly, reservoir	1	16	50-623-005	Subassembly, hose, cylinder up	1
2	99-159-007	Engine, 190cc	1	17	11019	1/4"-20x4" hex bolt, gr. A, z-plated	1
3	50-540-005	Assembly, belt tensioner	1	18	36102	1/4"-20 hex nut, gr. A, z-plated	1
4	15-042-003	Belt, 1/2"x55"	1	19	50-146-001	Spring, extension	1
5	50-027-003	Pulley, engine	1	20	50-139-001	Battery, 9V	1
6	50-643-001	Subassembly, pump, hydraulic, gear	1	21	50-034-002	Accessories, electrical, 9V battery snap	1
7	50-638-003	Assembly, T4 valve	1	22	50-034-003	Accessories, electrical, 9V battery clip	1
8	11053	5/16"-18x3/4", HHCS, #2, z-plated	3	23	99-034-134	Horn, ALL-T	1
9	11109	3/8"-16x1 1/2" hex bolt, gr. A, zinc finish	3	24	99-116-074	Fitting, hydraulic, 06MJ-12MP 90°	2
10	99-130-001	Pin, keystick	1	25	99-116-073	Fitting, hydraulic, 06MJ-08MP 90°	2
11	37024	3/8"-16 Nylon insert lock nut, gr. 2, z-finish	3	26	01-031-005	Filter, reservoir, hydraulic	1
12	50-623-001	Subassembly, hose, cylinder down	1	27	99-031-096	Accessories, clamp, 2 ear, 1 1/8"	1
13	50-623-002	Subassembly, hose, feed	1	28	99-031-095	Accessories, clamp, 2 ear, 1 7/16"	1
14	50-623-003	Subassembly, hose, return	1	29	99-116-060	Fitting, hydraulic, 06MJ-08MP straight	1
15	50-623-004	Subassembly, hose, suction	1				

FIG. 3: Sprocket Drive, Right Side, Exploded View and Bill of Materials

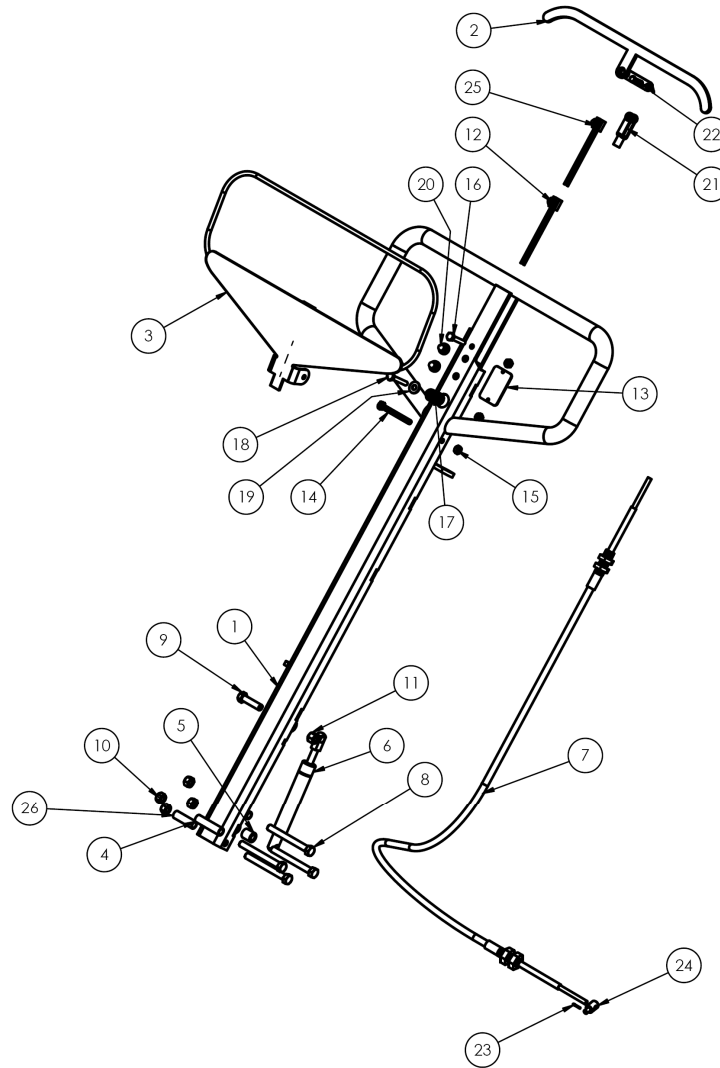


Item	Part no.	Description	Qty.
1	50-612-002	Assembly, front axle	1
2	50-024-004	Cover, front axle skid plate	1
3	50-024-010	Cover, sprocket	1
4	16-132-231	Tire, front right, foam filled	1
5	50-110-001	Bearing, flange mount	1
6	50-042-005	Sprocket, roller chain, front wheel	1
7	50-042-007	Sprocket, roller chain, axle	1
8	15-110-001	Bearing, ball, front axle	1
9	50-042-004	Bearing, flanged, transaxle	1
10	50-540-008	Subassembly, chain tensioner	1
11	50-145-005	Specialty hardware, #50 chain	1
12	99-130-003	Pin, key stock	1
13	32415	$\frac{5}{16}$ "-18x $\frac{1}{2}$ " HWH thread cutting screw, type F, z-plated	2
14	32416	$\frac{5}{16}$ "-18x $\frac{3}{4}$ " thread cutting screw, slotted, type F, z-plated	2
15	11053	$\frac{5}{16}$ "-18x $\frac{3}{4}$ " bolt, HHCS, #2, z-plated	4
16	50-120-005	Nut, front lug nut	4
17	36104	$\frac{5}{16}$ "-18 hex nut, gr. A, z-plated	4
18	99-130-002	Pin, keystock	1

FIG. 4: Sprocket Drive, Left Side, Exploded Parts View and Bill of Materials



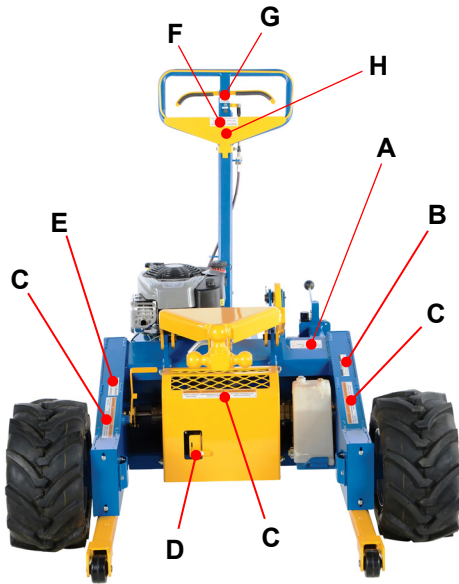
Item	Part no.	Description	Qty.
1	50-612-002	Assembly, front axle	1
2	50-024-004	Cover, front axle skid plate	1
3	50-024-010	Cover, sprocket	1
4	16-132-229	Tire, front left, foam filled	1
5	50-110-001	Bearing, flange mount	1
6	15-110-001	Bearing, ball, front axle	1
7	50-042-025	Sprocket, roller chain, front wheel	1
8	50-042-007	Sprocket, roller chain, axle	1
9	50-042-004	Bearing, flanged, transaxle	1
10	50-540-008	Subassembly, chain tensioner	1
11	50-145-005	Specialty hardware, #50 chain	1
12	50-120-005	Nut, front lug nut	4
13	32415	$\frac{5}{16}$ " -18x $\frac{1}{2}$ " HWH thread cutting screw, type F, z-plated	2
14	32416	$\frac{5}{16}$ " -18x $\frac{3}{4}$ " thread cutting screw, slotted, type F, z-plated	2
15	11053	$\frac{5}{16}$ " -18x $\frac{3}{4}$ " bolt, HHCS, #2, z-plated	4
16	36104	$\frac{5}{16}$ " -18 hex nut, gr. A, z-plated	4
17	99-130-002	Pin, keystone	1
18	99-130-003	Pin, key stock	1

FIG. 5: Handle Assembly Exploded View and Bill of Materials

Item	Part no.	Description	Qty.	Item	Part no.	Description	Qty.
1	50-525-006	Weldment, handle	1	14	11013	1/4"-20x2 1/2" bolt, HHCS, #2, z-plated	1
2	50-540-004	Weldment, shifter lever	1	15	37018	1/4"-20 Nylon lock nut, gr. 2, zinc finish	3
3	50-525-004	Weldment, safety bale	1	16	11009	1/4"-20x1 1/2" hex bolt, gr. A, z-plated	1
4	50-113-003	Spacer, handle spacer	2	17	50-146-002	Spring, killswitch	1
5	50-113-002	Spacer, air spring spacer	2	18	11010	1/4"-20x1 3/4" hex bolt, gr A, z-plated	1
6	99-145-015	Specialty hardware, shock, tension	1	19	33004	1/4" flat washer, USS, z-plated	1
7	50-145-003	Specialty hardware, shift cable	1	20	50-034-001	Boot, switch	2
8	11117	3/8"-16x3 1/2" bolt, HHCS, #2, z-plated	4	21	43520	2"x 7/16"x 5/8"x 1/4"-28 adjustable yoke end	1
9	11109	3/8"-16x1 1/2" hex bolt, gr. A, zinc finish	1	22	66026	1/4"x1" clevis pin	1
10	36106	3/8"-16 hex nut, gr. A, z-plated	4	23	65012	1/16"x1 1/2" cotter pin, z-plated	2
11	37024	3/8"-16 Nylon insert lock nut, gr. 2, zinc finish	1	24	50-120-001	Nut, brake nut	1
12	50-022-001	Switch, pushbutton SPST, normally closed	1	25	50-022-002	Switch pushbutton SPST, normally open	1
13	50-024-003	Cover, switch cover	1	26	50-017-004	Spacer, lower handle spacer	1

LABELING DIAGRAM:

The unit should be labeled as shown in the diagrams. However, label content and location are subject to change so your product might not be labeled exactly as shown. Thoroughly photograph the unit when you first receive it as discussed in the "Written Record" portion of the Inspections and Maintenance section on p. 5. Make sure that your record includes a photograph of each label. Replace all labels that are, or later become, damaged, missing, or not easily readable (e.g. faded). To order replacement labels, contact the technical service and parts department online at http://www.vestilmfg.com/parts_info.htm. Alternatively, you may request replacement parts and/or service by calling (260) 665-7586 and asking the operator to connect you to the Parts Department.



A: Label 287

MODEL/MODÉLO/MODÈLE _____
STATIC CAPACITY (evenly distributed) _____ lbs.
LA CAPACIDAD CONSTANTE (distribuida uniformemente) _____ kgs.
CAPACITÉ STATIQUE (distribuée régulièrement) _____ kgs.
SERIAL/SERIE/SÉRIE _____

287 REV 0812

B: Label 206

ISO 32 / 150 SUS
HYDRAULIC OIL OR NON-SYNTHETIC TRANSMISSION FLUID
ACEITE HIDRAULICO O LIQUIDOS DE TRANSMISION NO SINTETICOS
HUILE OU LIQUIDE HYDRAULIQUE NON-SYNTHÉTIQUE
<small>206 Rev. 1003</small>
<small>VESTIL MANUFACTURING CORPORATION • Phone (260) 665-7586 • www.vestil.com</small>

C: Label 208

⚠ WARNING	⚠ ADVERTENCIA	⚠ AVERTISSEMENT
KEEP CLEAR OF PINCH POINT	MANTENGASE ALEJADO DEL PUNTO DE CORTE	SE TENIR À DISTANCE DU POINT DE PINCEMENT

208A

D: Label 661

PRESS FOR NEUTRAL

661

E: Label 835

PARKING BRAKE FRENO DE PARKING

835

F: Label 834

Hold kill switch to run Mantenga el interruptor de cierre apretado para ejecutar
--

834

G: Label 662

FORWARD →
← REVERSE

662
REV 1100

H: Label 1060

⚠ WARNING: Cancer - www.P65Warnings.ca.gov

1060



L: Label 696

⚠ DANGER
Engine operation produces carbon monoxide. ONLY OPERATE engine in well ventilated areas. TURN OFF engine when not in use.

696
REV 1100

J: Label 220

⚠ WARNING	⚠ ADVERTENCIA	⚠ AVERTISSEMENT
KEEP CLEAR WHEN IN USE	MANTENGASE ALEJADO CUANDO SE ESTA OPERANDO	SE TENIR À DISTANCE LORS DU FONCTIONNEMENT

220

LIMITED WARRANTY

Vestil Manufacturing Corporation (“Vestil”) warrants this product to be free of defects in material and workmanship during the warranty period. Our warranty obligation is to provide a replacement for a defective, original part covered by the warranty after we receive a proper request from the Warrantee (you) for warranty service.

Who may request service?

Only a warrantee may request service. You are a warrantee if you purchased the product from Vestil or from an authorized distributor AND Vestil has been fully paid.

Definition of “original part”?

An original part is a part used to make the product as shipped to the Warrantee.

What is a “proper request”?

A request for warranty service is proper if Vestil receives: 1) a photocopy of the Customer Invoice that displays the shipping date; AND 2) a written request for warranty service including your name and phone number. Send requests by one of the following methods:

<u>US Mail</u>	<u>Fax</u>	<u>Email</u>
Vestil Manufacturing Corporation 2999 North Wayne Street, PO Box 507 Angola, IN 46703	(260) 665-1339 <u>Phone</u> (260) 665-7586	info@vestil.com Enter “Warranty service request” in subject field.

In the written request, list the parts believed to be defective and include the address where replacements should be delivered. After Vestil receives your request for warranty service, an authorized representative will contact you to determine whether your claim is covered by the warranty. Before providing warranty service, Vestil will require you to send the entire product, or just the defective part (or parts), to its facility in Angola, IN.

What is covered under the warranty?

The warranty covers defects in the following original, dynamic parts: motors, hydraulic pumps, motor controllers, and cylinders. It also covers defects in original parts that wear under normal usage conditions (“wearing parts”), such as bearings, hoses, wheels, seals, brushes, and batteries.

How long is the warranty period?

The warranty period for original dynamic components is 1 year. For wearing parts, the warranty period is 90 days. Both warranty periods begin on the date Vestil ships the product to the Warrantee. If the product was purchased from an authorized distributor, the periods begin when the distributor ships the product. Vestil may, at its sole discretion, extend a warranty period for products shipped from authorized distributors by up to 30 days to account for shipping time.

If a defective part is covered by the warranty, what will Vestil do to correct the problem?

Vestil will provide an appropriate replacement for any *covered* part. An authorized representative of Vestil will contact you to discuss your claim.

What is not covered by the warranty?

The Warrantee (you) are responsible for paying labor costs and freight costs to return the product to Vestil for warranty service.

Events that automatically void this Limited Warranty.

- Misuse;
- Negligent assembly, installation, operation or repair;
- Installation/use in corrosive environments;
- Inadequate or improper maintenance;
- Damage sustained during shipping;
- Collisions or other accidents that damage the product;
- Unauthorized modifications: Do not modify the product IN ANY WAY without first receiving written authorization from Vestil.

Do any other warranties apply to the product?

Vestil Manufacturing Corp. makes no other express warranties. All implied warranties are disclaimed to the extent allowed by law. Any implied warranty not disclaimed is limited in scope to the terms of this Limited Warranty. Vestil makes no warranty or representation that this product complies with any state or local design, performance, or safety code or standard. Noncompliance with any such code or standard is not a defect in material or workmanship.

