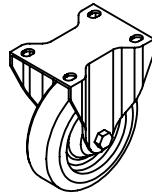
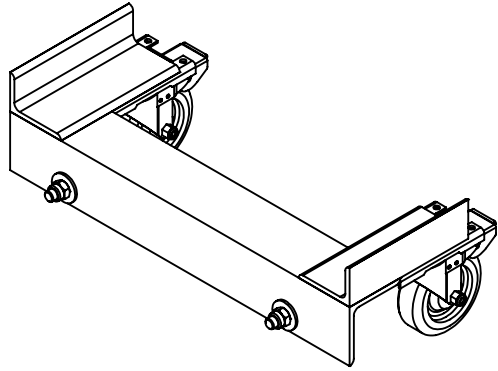


PJ-CYL-CK CASTER KIT

KIT SHOULD INCLUDE:

(1) SWIVEL CASTER ASSEMBLY

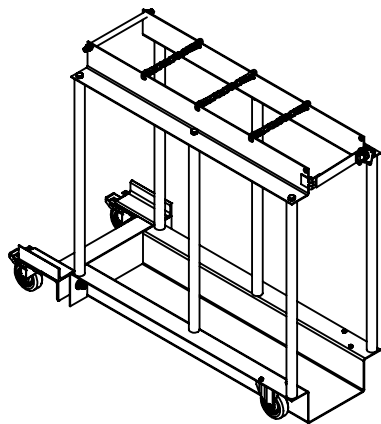
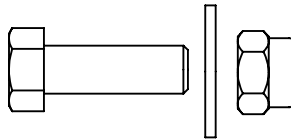
(2) RIGID CASTERS



(4) 1/4-20 UNC x 1 LG HEX HEAD BOLT, WASHER, LOCK NUT (FOR USE ON RIGID CASTERS)

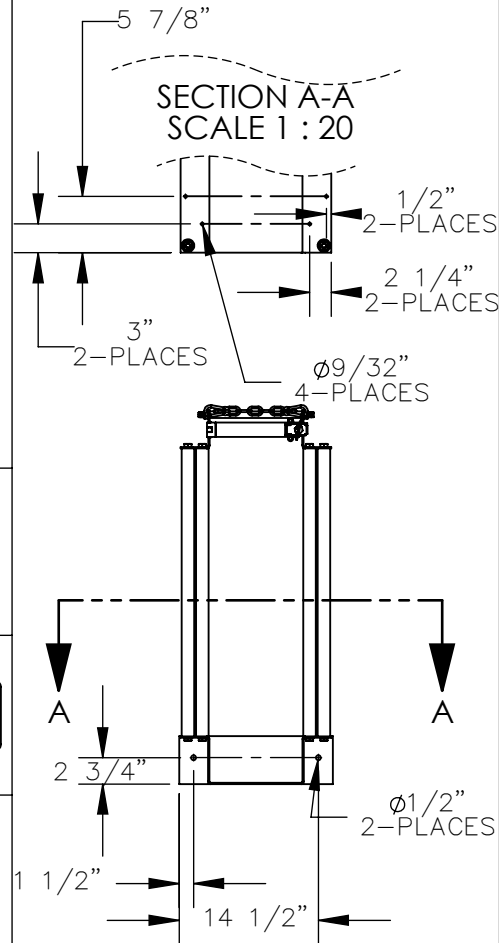


(2) 1/2-13 UNC x 1 1/2 LG HEX HEAD BOLT, WASHER, LOCK NUT (FOR USE ON SWIVEL ASSEMBLY)



UNIT SHOWN FULLY ASSEMBLED WITH CASTER KIT

DETAILED DRAWING



INSTRUCTIONS

- DRILL HOLES IN LOCATIONS SHOWN TO LEFT.**
- MOUNT SWIVEL CASTER ASSEMBLY ON REAR OF UNIT.**
- MOUNT RIGID CASTERS UNDER SIDE LIP OF UNIT.**



PROPRIETARY AND CONFIDENTIAL
THE INFORMATION CONTAINED IN THIS DRAWING IS THE SOLE PROPERTY OF VESTIL MANUFACTURING CO. ANY REPRODUCTION IN PART OR AS A WHOLE WITHOUT THE WRITTEN PERMISSION OF VESTIL MANUFACTURING CO. IS PROHIBITED.

UNLESS OTHERWISE SPECIFIED:
REMOVE ALL BURRS AND SHARP EDGES

DIMENSIONS ARE IN INCHES

CONCENTRIC	.006 TIR	.060 TIR
ANGLES	$\pm 0^\circ 30'$	$\pm 1^\circ 0'$
DECIMALS	x.xxx $\pm .005$	
	x.xx $\pm .010$	
	x.x $\pm .025$	$\pm .015$
FRACTIONS	$\pm 1/32$	$\pm 1/16$
TOLERANCES	MACHINE	WELDMENT

COMMENTS:

33-001-332
DO NOT SCALE DRAWING

Vestil Manufacturing Co.

DESCRIPTION:

INSTRUCTIONS, PJ-CYL CASTERS

MODEL NO: CYL-CK

DRAWN BY:
K.YOUNG

DATE:
9/12/05

SCALE: 1:8

SIZE
A

MAT'L: AS LISTED

DWG. NO.

33-126-008