

FOLDING MEZZANINE LADDER, LAD-FM-60

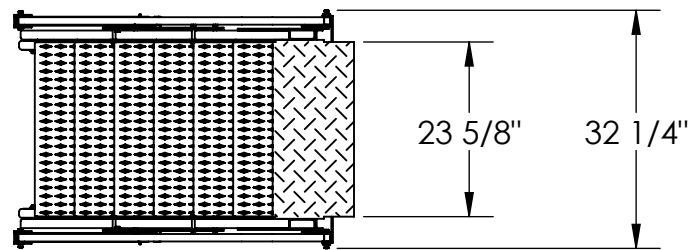
APPROX WEIGHT: 252.47 lbs.
DOES NOT INCLUDE WEIGHT OF POWER OR PACKAGING!!!

*** ANY ADDITIONS, DELETIONS, OR OMISSIONS MUST BE CORRECTED ON THIS DRAWING AS THIS DRAWING WILL BE CONSIDERED ALL INCLUSIVE ***

ALL GRAPHICS PROVIDED ARE FOR REFERENCE ONLY. IF CERTAIN DIMENSIONS ARE CRITICAL PLEASE VERIFY THOSE DIMENSIONS WITH YOUR SALESPERSON

FOR INTERNAL USE ONLY
PROJECT SIGN OFF

SALES	
ENG.	
FAB.	
POWER	



STANDARD FEATURES

MODEL NUMBER: LAD-FM-60
 OVERALL WIDTH: 32 1/4"
 USABLE STEP WIDTH: 24 1/4"
 HANDRAIL HEIGHT: 31 5/8"
 STEP MATERIAL: SERRATED STEEL
 STEP DEPTH: 7"
 MAX CAPACITY: 350 LBS.
 MEZZANINE HEIGHT: 60"
 (MEZZANINE HEIGHT TOLERANCE: ± 1/2")
 STEP HEIGHT SPACING: 8 5/8"
 EXTENDED LENGTH: 42 1/4"
 COLLAPSED LENGTH: 14 5/8" (APPROX.)
 TOUGH BAKED IN POWDER
 COATED BLUE AND YELLOW FINISH

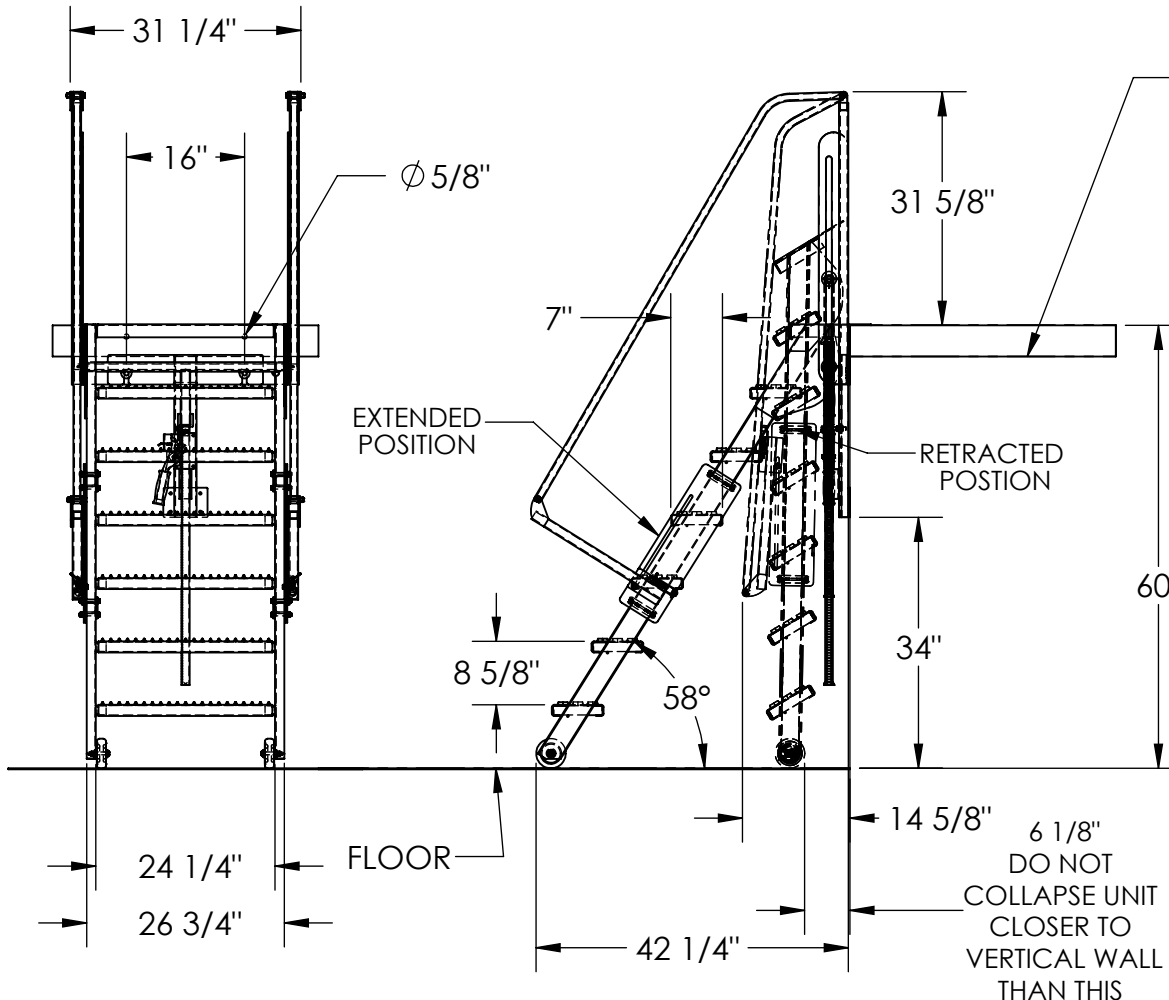
SPECIAL FEATURES

NONE

MEZZANINE SHOWN FOR REFERENCE ONLY - NOT INCLUDED

IT IS THE CUSTOMER'S RESPONSIBILITY TO MAKE SURE THAT THIS UNIT COMPLIES WITH ALL LOCAL SAFETY LAWS, CODES AND REGULATIONS

DIMENSION TOLERANCE ± 1/4"



APPROVAL

I, THE UNDERSIGNED, AGREE THAT THE PRODUCT AS REPRESENTED SATISFIES DESIGN AND DIMENSION REQUIREMENTS. I ALSO ACKNOWLEDGE MY DUTY TO CONFIRM PRODUCT AND INSTALLATION COMPLIANCE WITH ALL APPLICABLE FEDERAL, STATE AND LOCAL REGULATIONS AND STANDARDS.

ANY MODIFIED UNITS ARE NON-RETURNABLE

[] As drawn [] As marked

Signed: _____ Date: _____

Printed Name: _____

LEAD TIME WILL START UPON RECEIPT OF SIGNED APPROVAL DRAWING

DISTRIBUTOR'S NAME: VESTIL MANUFACTURING

W.O.# _____

SALES: X

DATE: 11/28/2017

SCALE: 1:26

FILE NAME: 44-007-675

DRAWN BY: KGH

REFERENCE: X

QUOTED LEAD TIME: X

QUOTE # X

DO NOT COLLAPSE UNIT CLOSER TO VERTICAL WALL THAN THIS